



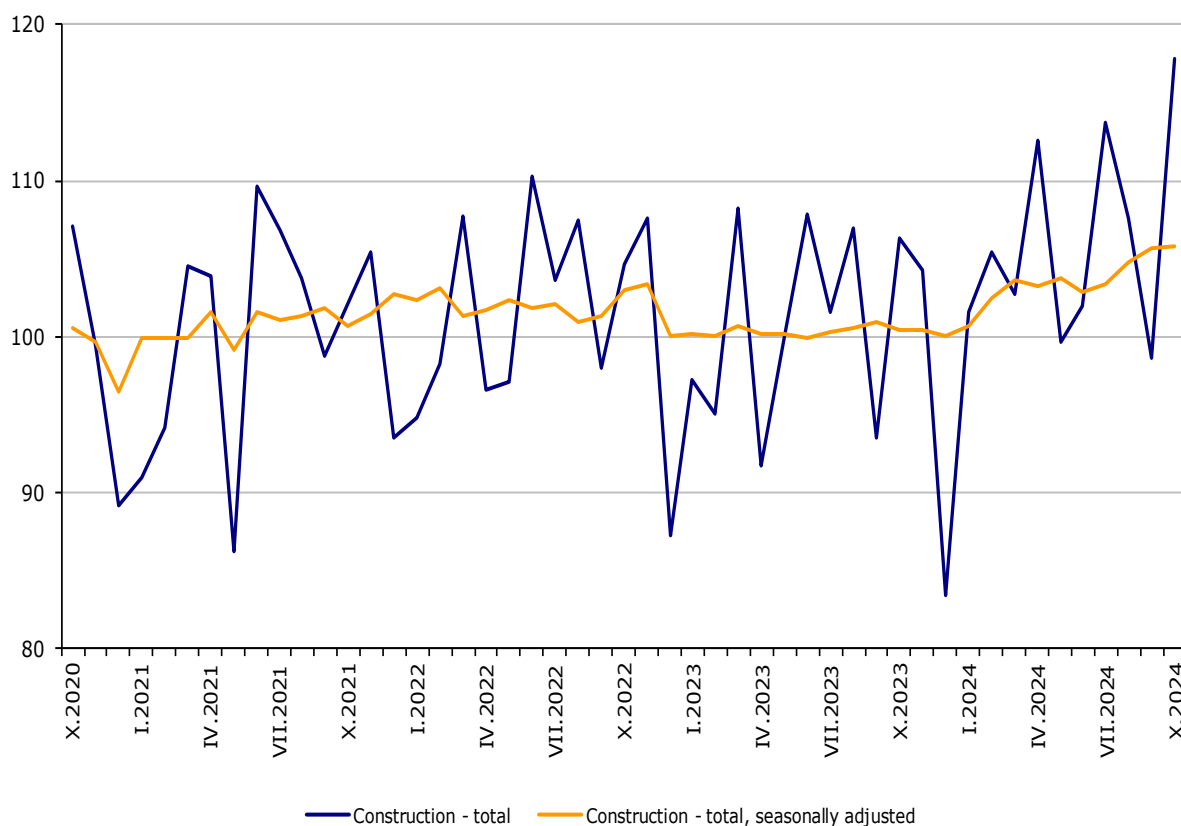
Since July 2024, NSI has started publishing Construction Production Indices by base year 2021 = 100 in accordance with the requirements of Regulation (EU) 2019/2152 of the European Parliament and of the Council for European Business Statistics and Commission Implementing Regulation (EU) 2020/1197.

CONSTRUCTION PRODUCTION INDICES IN OCTOBER 2024

In October 2024, the production index in the 'Construction' section increased by 0.1% compared to the previous month (Table 1). The data are preliminary and seasonally adjusted.

The calendar-adjusted data showed a rise of 6.3% in the construction production compared to the same month of 2023 (Table 2).

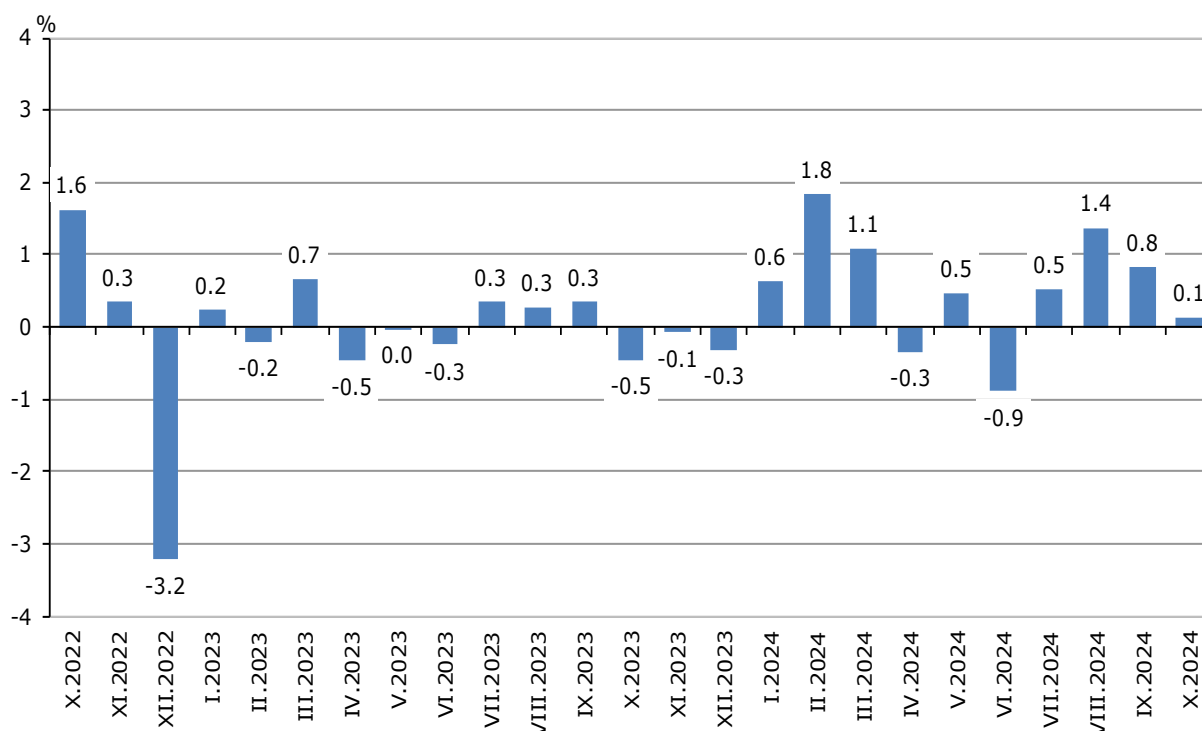
Figure 1. Construction Production Indices (2021 = 100)



Monthly changes

In October 2024, compared to the previous month, an increase was reported in the building construction - by 1.2% and in the civil engineering - by 0.5%. Production of specialized construction activities decreased by 1.3% (Table 1).

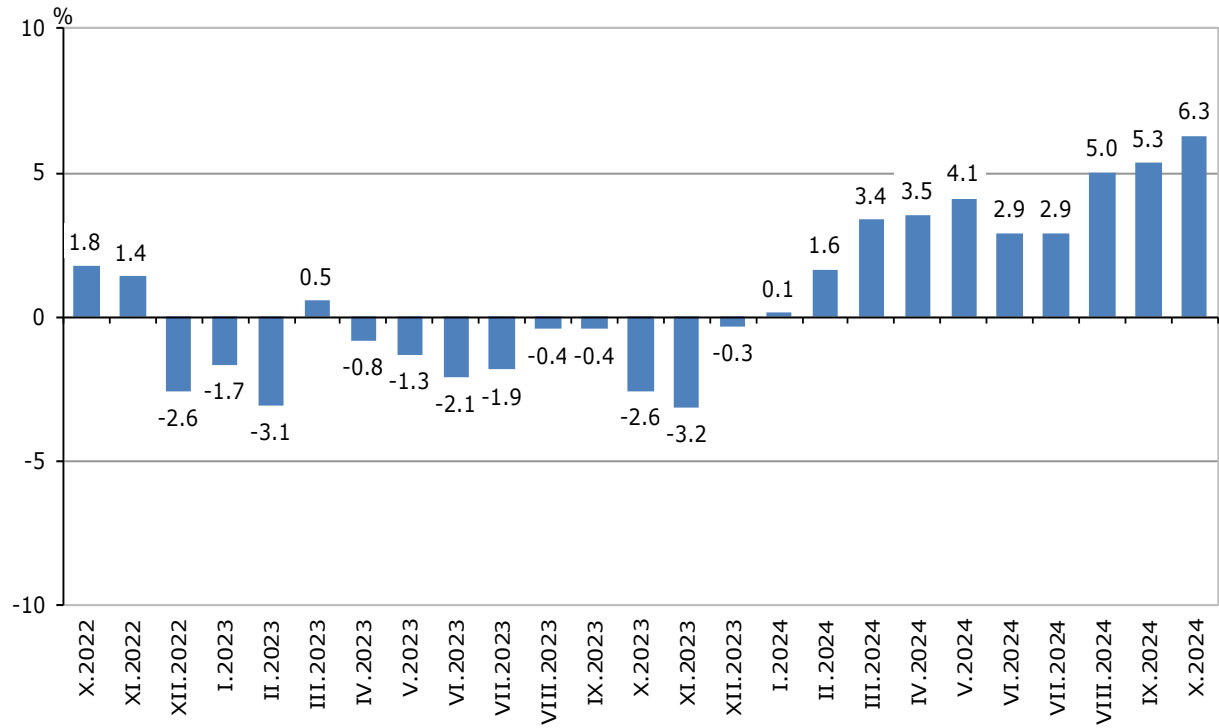
**Figure 2. Changes of the Construction Production Indices compared to the previous month
(Seasonally adjusted, 2021 = 100)**



Annual changes

In October 2024, compared to the same month of 2023, a rise of production was registered in the specialized construction activities - by 8.9%, in the civil engineering - by 7.1%, and in the production of building construction - by 3.5% (Table 2).

**Figure 3. Changes of the Construction Production Indices compared to the same month of the previous year
(Calendar-adjusted, 2021 = 100)**



Methodological notes

The monthly indices show the short-term changes in the construction production between two comparable periods. This information can be used to analyse the current state of construction activity in the country, as well as a short-term forecast for its future development.

The indices are calculated on the basis of information on hours worked in construction. The data are collected with a monthly sample survey that includes construction enterprises, whose production exceeds 75% of the total production in construction. Construction Production Indices are calculated on the base 2021 = 100. Since 2024 the data has been provided according to the requirements of Regulation (EU) 2019/2152 and Regulation (EU) 2020/1197.

Seasonal adjustment is a statistical method that eliminates the seasonal component of time series.

Calendar adjustment is an adjustment for variations in the monthly data, caused by calendar effects, the different number of calendar and working days in the months, national holidays and outliers (for example, the presence of more non-working days in May could contribute to the decline in the production in some activities).

Since July 2024, all dynamic rows have been recalculated based on 2021 as base year and are published in IS Infostat.

CONSTRUCTION PRODUCTION INDICES IN OCTOBER 2024

Annex

Table 1

Changes of the Construction Production Indices compared to the previous month¹

(Per cent)

Indicators	2024					
	V	VI	VII	VIII	IX	X
Construction - total	0.5	-0.9	0.5	1.4	0.8	0.1
Construction of buildings	-0.7	-0.7	0.2	0.5	1.0	1.2
Civil engineering	-0.1	1.3	0.2	1.8	0.3	0.5
Specialized construction activities	2.2	-2.7	1.1	2.1	1.0	-1.3

¹ Seasonally adjusted.

Table 2

Changes of the Construction Production Indices compared to the same month of the previous year¹

(Per cent)

Indicators	2024					
	V	VI	VII	VIII	IX	X
Construction - total	4.1	2.9	2.9	5.0	5.3	6.3
Construction of buildings	-0.5	-1.4	-1.7	-1.3	0.3	3.5
Civil engineering	2.8	6.3	4.3	7.0	6.4	7.1
Specialized construction activities	10.9	5.5	7.3	11.3	10.5	8.9

¹ Calendar-adjusted.

CONSTRUCTION PRODUCTION INDICES IN OCTOBER 2024

Table 3

Construction Production Indices (Seasonally adjusted, 2021 = 100)

Indicators	2023			2024									
	X	XI	XII	I	II	III	IV	V	VI	VII	VIII	IX	X
Construction - total	100.5	100.4	100.1	100.7	102.5	103.7	103.3	103.8	102.9	103.4	104.8	105.7	105.8
Construction of buildings	103.2	102.8	102.6	102.0	100.5	102.7	103.5	102.8	102.1	102.3	102.8	103.9	105.1
Civil engineering	91.7	91.6	91.3	92.3	93.4	93.8	93.0	92.9	94.1	94.2	95.9	96.2	96.7
Specialized construction activities	104.9	105.2	104.7	106.6	113.3	113.6	112.3	114.8	111.7	112.9	115.3	116.4	114.9

Table 4

Construction Production Indices (Calendar-adjusted, 2021=100)

Indicators	2023			2024									
	X	XI	XII	I	II	III	IV	V	VI	VII	VIII	IX	X
Construction - total	106.4	101.1	90.2	98.5	98.0	108.5	102.0	101.7	107.7	109.1	107.6	102.2	113.0
Construction of buildings	107.9	101.9	92.4	100.2	95.7	108.9	103.6	101.4	106.8	107.1	105.2	99.5	111.7
Civil engineering	98.0	93.5	81.7	87.2	89.0	98.1	91.2	90.2	99.7	100.6	100.1	94.0	105.0
Specialized construction activities	111.8	106.9	95.3	106.5	108.8	117.3	109.6	112.5	116.0	119.2	117.3	112.9	121.8