



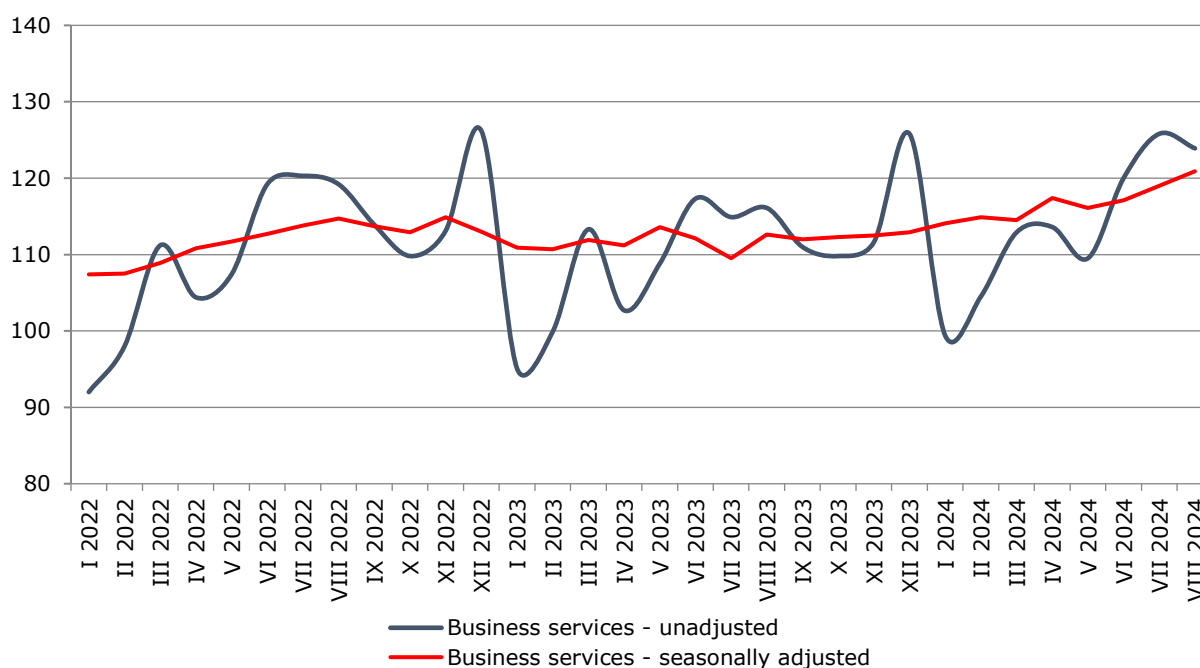
Since July 2024, NSI has started publishing Services Production Indices by base year 2021 = 100 in accordance with the requirements of Regulation (EU) 2019/2152 of the European Parliament and of the Council for European Business Statistics and Commission Implementing Regulation (EU) 2020/1197.

SERVICES PRODUCTION INDICES IN AUGUST 2024

In August 2024, the total production index in **Services of the business economy**¹ increased by 1.5% compared to the previous month. The data are preliminary and seasonally adjusted.

Compared to August 2023, an increase of 7.3% was registered in the calendar-adjusted index according to preliminary data.

Figure 1. Production indices for Business services (2021 = 100)

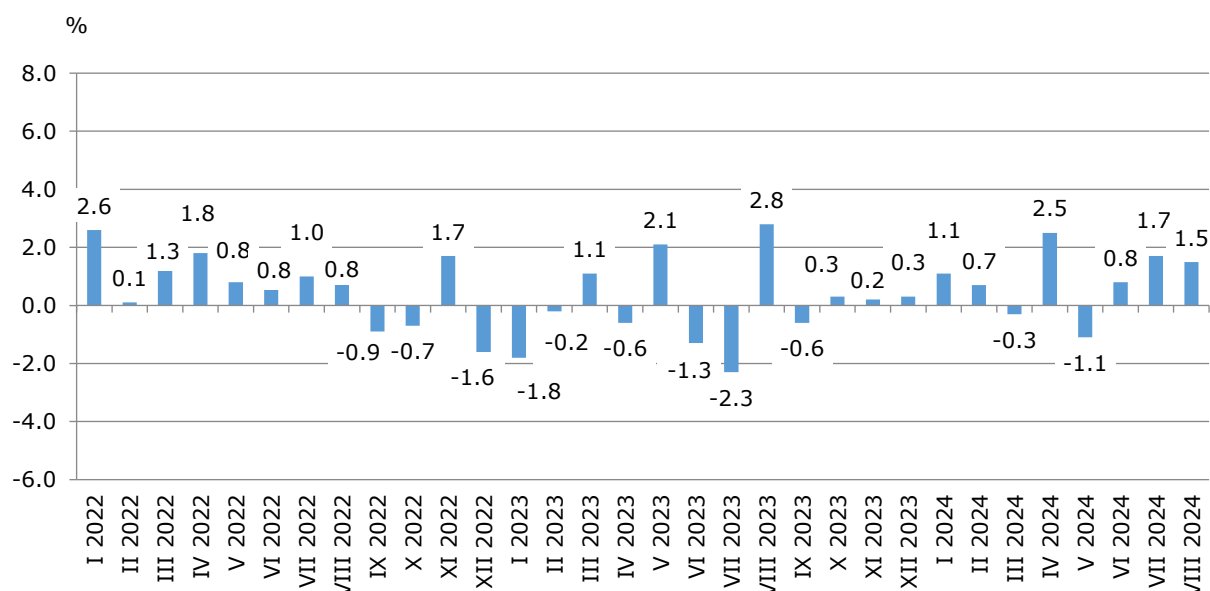


¹ Business services include the following sectors from NACE.BG – 2008: H - Transportation and storage, I - Accommodation and food service activities, J - Information and communication, L - Real estate activities, M_STS - Professional, scientific and technical activities (specific grouping under Regulation (EU) 2019/2152) and N - Administrative and support service activities.

Monthly changes

An increase, compared to the previous month, was reported in the following sectors: 'Information and communication' - by 5.2%, 'Professional, scientific and technical activities' - by 4.7% and 'Administrative and support service activities' - by 0.2%. The 'Real estate activities' sector kept the same level. A decline was seen in the following sectors: 'Transportation and storage' - by 2.7%, and 'Accommodation and food service activities' - by 0.4%.

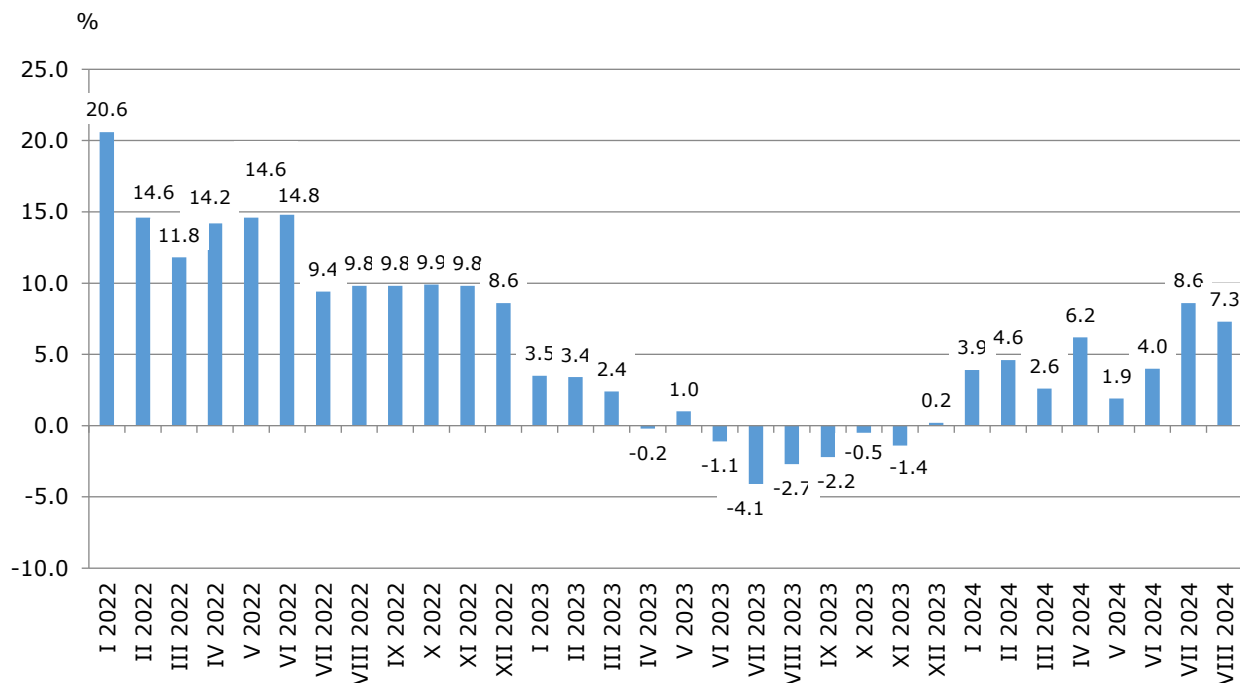
**Figure 2. Changes of production indices for Business services
compared to the previous month
(Seasonally adjusted data)**



Annual changes

On an annual basis, a rise was observed in the following sectors: 'Information and communication' - by 18.2%, 'Professional, scientific and technical activities' - by 12.3%, 'Accommodation and food service activities' - by 4.9% and 'Transportation and storage' - by 1.9%. A decrease was reported in the following sectors: 'Real estate activities' - by 2.0% and 'Administrative and support service activities' - by 0.5%.

Figure 3. Changes of production indices for Business services compared to the same month of the previous year (Calendar-adjusted data)



Methodological notes

Monthly indices of production in services are calculated and published two months after the reference period (M+2) in accordance with the requirements of Regulation (EU) 2019/2152 of the European Parliament and of the Council for European Business Statistics.

Production indices in services are calculated by deflating the turnover indices for each activity with the corresponding producer price indices. The purpose of the production index is to measure changes in output volume at monthly intervals. The indices are calculated with 2021 as a base year.

Seasonal adjustment is a statistical method, which eliminates the seasonal component of time series.

Calendar adjustment is an adjustment for variations caused by calendar effects, a different number of calendar and working days in the months, national holidays and outliers (for example, the presence of more non-working days in May could contribute to the decline in some activities).

Since August 2024, all dynamic rows have been recalculated based on the 2021 base year and have been published in IS Infostat.

Annex

Table 1

Changes of production indices in services¹
(Compared to the previous month)

(Per cent)

Economic activities	NACE.BG - 2008	2024					
		III	IV	V	VI	VII	VIII*
Services of the business economy (except trade and financial and insurance activities)	HTNXX	-0.3	2.5	-1.1	0.8	1.7	1.5
Transportation and storage	H	0.0	5.3	-4.4	0.0	1.4	-2.7
Land transport and transport via pipelines	H49	-1.8	4.9	-5.7	0.6	1.1	-2.9
Water transport	H50	-7.0	10.8	-8.7	8.5	-2.5	6.2
Air transport	H51	3.2	18.6	4.9	-11.4	-3.2	-3.6
Warehousing and support activities for transportation	H52	4.4	1.5	-2.4	0.9	1.6	-2.7
Postal and courier activities	H53	-3.5	11.0	-9.0	2.0	8.7	-2.0
Accommodation and food service activities	I	0.1	0.5	-1.4	1.6	0.7	-0.4
Accommodation	I55	1.7	2.2	0.3	4.7	0.0	-0.9
Food and beverage service activities	I56	0.1	-0.5	0.0	-0.9	-1.4	0.0
Information and communication	J	-0.6	1.1	1.7	-0.8	3.3	5.2
Publishing activities	J58	-3.8	-2.1	5.3	-3.1	36.0	23.0
Motion picture, video, television programme production; programming and broadcasting activities	J59	-0.5	-10.9	-10.9	47.9	-10.8	-19.6
Programming and broadcasting activities	J60	-25.9	34.6	-14.3	-8.7	2.3	7.3
Telecommunications	J61	-1.5	-0.3	3.8	0.6	0.0	-1.0
Computer programming, consultancy and related activities	J62	3.1	0.1	1.7	-2.2	3.8	11.7
Information service activities	J63	-10.9	13.3	0.2	-9.5	11.5	-6.5
Real estate activities	L	-3.3	8.0	-4.3	9.1	-9.0	0.0
Professional, scientific and technical activities (specific grouping under Regulation (EU) 2019/2152)	M_STS	-1.1	1.7	-0.2	0.3	7.5	4.7
Legal and accounting activities	M69	-5.9	-0.1	15.0	-8.8	6.6	8.4
Management consultancy activities	M702	-7.5	3.0	-1.1	14.2	17.9	11.0
Architectural and engineering activities; technical testing and analysis	M71	6.6	1.9	-4.7	-12.2	14.9	-2.5
Advertising and market research	M73	-5.7	8.8	-10.6	7.9	-7.1	0.4
Other professional, scientific and technical activities	M74	6.1	-3.9	-1.5	9.6	2.3	4.9
Administrative and support service activities	N	2.3	-0.4	1.4	1.8	-2.2	0.2
Rental and leasing activities	N77	10.8	7.8	-11.6	4.0	2.3	-9.1
Employment activities	N78	3.8	-16.1	27.4	-2.9	-8.5	1.6
Travel agency, tour operator reservation service and related activities	N79	0.3	3.5	1.6	13.2	0.4	5.7
Security and investigation activities	N80	-1.7	0.3	2.3	-4.0	-1.0	5.0
Services to buildings and landscape activities	N81	3.8	0.9	-9.3	5.2	-7.0	-1.3
Office administrative, office support and other business support activities	N82	0.1	-0.3	1.5	2.9	-3.0	-1.2

¹ Seasonally adjusted data.

* Preliminary data.

Table 2

Changes of production indices in services¹
(Compared to the same month of the previous year)

(Per cent)

Economic activities	NACE.BG - 2008	2024					
		III	IV	V	VI	VII	VIII*
Services of the business economy (except trade and financial and insurance activities)	HTNXK	2.6	6.2	1.9	4.0	8.6	7.3
Transportation and storage	H	3.3	14.5	1.8	2.8	10.3	1.9
Land transport and transport via pipelines	H49	1.0	12.6	-1.1	4.0	6.7	-1.8
Water transport	H50	18.4	21.2	-7.9	3.9	8.6	7.4
Air transport	H51	-17.7	7.1	38.8	6.0	18.2	8.5
Warehousing and support activities for transportation	H52	12.2	17.5	0.4	-1.0	12.6	4.0
Postal and courier activities	H53	2.1	23.9	3.6	5.1	23.4	13.5
Accommodation and food service activities	I	7.7	12.1	8.8	6.8	6.5	4.9
Accommodation	I55	16.9	24.5	23.5	20.3	20.6	15.8
Food and beverage service activities	I56	1.7	2.2	1.9	-2.2	-6.1	-6.0
Information and communication	J	8.5	10.6	13.1	2.8	15.3	18.2
Publishing activities	J58	1.9	-17.4	2.7	-3.9	22.0	76.8
Motion picture, video, television programme production; programming and broadcasting activities	J59	17.5	-1.9	-10.8	32.7	17.5	-22.3
Programming and broadcasting activities	J60	-35.4	2.6	-13.6	-25.5	-9.5	-13.5
Telecommunications	J61	15.0	13.5	13.4	6.8	16.7	9.4
Computer programming, consultancy and related activities	J62	8.6	12.3	17.0	0.4	15.9	28.2
Information service activities	J63	-4.6	5.3	8.4	2.4	7.0	1.6
Real estate activities	L	-9.0	0.6	-4.5	13.6	-0.2	-2.0
Professional, scientific and technical activities (specific grouping under Regulation (EU) 2019/2152)	M_STS	-3.1	-1.3	-11.4	2.5	8.2	12.3
Legal and accounting activities	M69	6.9	4.6	24.7	23.2	12.5	28.6
Management consultancy activities	M702	-14.9	-6.7	-11.5	14.2	56.9	129.2
Architectural and engineering activities; technical testing and analysis	M71	-4.6	-9.8	-31.1	-27.3	-17.1	-13.8
Advertising and market research	M73	-2.0	3.5	-8.0	4.2	-8.1	-8.5
Other professional, scientific and technical activities	M74	-1.7	5.2	-19.5	15.1	11.4	-21.5
Administrative and support service activities	N	-2.5	-12.1	-4.8	2.4	-0.4	-0.5
Rental and leasing activities	N77	-6.0	-39.3	-33.6	-8.3	-13.7	-23.5
Employment activities	N78	-4.8	-21.3	8.2	2.9	0.7	4.3
Travel agency, tour operator reservation service and related activities	N79	11.7	23.9	24.1	24.9	18.3	24.0
Security and investigation activities	N80	2.5	3.3	5.7	-0.8	-0.7	1.5
Services to buildings and landscape activities	N81	2.3	11.2	-3.5	-1.2	-7.9	-7.9
Office administrative, office support and other business support activities	N82	-9.3	-4.2	-1.4	1.7	1.3	-0.1

¹ Calendar-adjusted data.

* Preliminary data.

SERVICES PRODUCTION INDICES IN AUGUST 2024

Table 3

Production indices in services - seasonally adjusted (2021 = 100)

NACE.BG - 2008	2023					2024*							
	VIII	IX	X	XI	XII	I	II	III	IV	V	VI	VII	VIII
HTNXK	112.6	112.0	112.3	112.5	112.9	114.1	114.9	114.5	117.4	116.1	117.1	119.0	120.9
H	107.7	106.0	109.7	105.7	105.6	108.5	110.9	110.9	116.7	111.6	111.6	113.2	110.1
H49	105.1	102.4	104.2	101.2	101.4	104.0	107.9	106.0	111.2	104.8	105.5	106.6	103.5
H50	127.4	119.5	134.4	135.4	146.5	119.9	128.6	119.6	132.6	121.0	131.3	128.0	136.0
H51	215.0	223.4	266.1	202.0	201.4	212.2	221.8	228.8	271.4	284.6	252.3	244.1	235.3
H52	100.0	99.4	102.7	101.7	101.9	103.5	102.9	107.4	109.0	106.3	107.3	109.0	106.0
H53	113.2	112.3	116.4	115.6	110.2	123.2	120.5	116.3	129.1	117.5	119.9	130.3	127.7
I	123.9	132.0	134.5	135.4	138.0	137.0	139.5	139.6	140.3	138.4	140.6	141.5	141.0
I55	131.0	148.0	149.7	151.9	160.0	163.2	164.5	167.3	170.9	171.4	179.4	179.4	177.8
I56	122.4	123.4	123.8	123.6	123.3	121.2	122.7	122.8	122.2	122.3	121.2	119.5	119.5
J	108.0	108.4	107.2	107.1	110.0	113.5	114.8	114.1	115.4	117.4	116.4	120.3	126.5
J58	88.0	91.2	81.3	93.3	96.7	85.4	92.2	88.7	86.9	91.5	88.6	120.5	148.3
J59	112.1	81.9	121.6	79.0	109.2	94.8	105.4	104.9	93.5	83.3	123.2	109.9	88.4
J60	94.7	94.5	86.8	89.5	84.0	82.1	96.8	71.7	96.5	82.7	75.5	77.2	82.9
J61	110.4	108.1	107.6	110.3	109.3	113.2	119.3	117.5	117.2	121.6	122.3	122.4	121.1
J62	107.8	113.0	108.1	105.9	112.9	118.2	114.1	117.6	117.7	119.7	117.1	121.5	135.7
J63	110.9	104.5	112.5	124.4	109.9	116.4	119.3	106.3	120.4	120.7	109.2	121.8	113.8
L	96.7	96.5	94.5	104.9	98.0	94.5	96.4	93.3	100.7	96.4	105.1	95.6	95.6
M_STS	125.2	117.6	114.5	114.4	118.2	115.5	115.0	113.8	115.7	115.4	115.8	124.5	130.4
M69	107.7	112.2	108.3	115.3	115.0	116.5	118.8	111.8	111.7	128.5	117.2	124.9	135.4
M702	106.7	111.4	109.7	115.3	122.1	124.3	124.7	115.3	118.8	117.5	134.1	158.1	175.5
M71	129.0	128.7	120.2	113.3	121.7	109.0	108.6	115.8	118.0	112.5	98.8	113.5	110.7
M73	125.9	134.5	133.9	128.1	131.3	134.5	125.4	118.3	128.7	115.1	124.2	115.3	115.8
M74	155.5	102.4	103.8	103.6	104.4	100.4	102.5	108.7	104.5	103.0	112.9	115.4	121.1
N	118.7	119.3	120.1	123.7	116.4	118.9	114.0	116.6	116.2	117.8	119.9	117.3	117.5
N77	156.8	157.8	173.4	177.9	161.9	154.6	118.9	131.8	142.1	125.6	130.6	133.6	121.5
N78	107.6	113.9	113.6	115.4	107.5	113.0	112.3	116.6	97.8	124.6	120.9	110.7	112.4
N79	171.8	188.3	165.6	165.0	161.7	183.6	186.1	186.7	193.2	196.2	222.1	222.9	235.6
N80	101.9	95.6	96.7	101.5	97.9	97.6	101.9	100.2	100.5	102.9	98.7	97.8	102.7
N81	107.4	105.2	103.7	102.3	98.7	111.3	108.7	112.8	113.8	103.2	108.6	101.0	99.7
N82	107.6	109.4	108.1	113.5	105.4	107.2	106.4	106.5	106.2	107.8	110.9	107.6	106.4

* Preliminary data.

SERVICES PRODUCTION INDICES IN AUGUST 2024

Table 4

Production indices in services - calendar-adjusted (2021 = 100)

NACE.BG - 2008	2023					2024*							
	VIII	IX	X	XI	XII	I	II	III	IV	V	VI	VII	VIII
HTNXK	118.9	114.1	111.1	110.9	126.7	98.9	104.4	114.2	112.0	111.6	123.4	129.0	127.6
H	109.6	107.6	113.9	107.5	102.0	93.2	101.9	114.1	115.8	110.2	115.6	126.2	111.7
H49	99.8	100.7	110.3	106.6	98.7	88.5	102.8	112.9	112.0	104.2	109.4	115.4	98.0
H50	140.7	124.5	145.8	124.0	141.9	90.7	104.8	117.5	135.3	130.2	135.8	153.3	151.0
H51	376.1	310.4	231.4	115.9	127.9	118.7	124.2	149.7	209.2	281.8	326.8	424.3	408.0
H52	102.4	101.0	107.9	103.6	99.6	94.5	94.5	111.3	110.3	103.4	105.1	116.6	106.5
H53	105.2	106.0	115.0	125.1	124.1	119.4	116.5	121.3	129.2	113.6	120.8	127.4	119.4
I	202.6	146.8	114.9	102.6	121.0	110.2	116.1	123.2	122.5	131.8	155.2	193.9	212.6
I55	272.2	174.3	111.3	99.9	124.7	123.0	133.2	135.4	136.8	147.3	203.6	279.1	315.3
I56	163.0	132.1	116.6	104.9	118.7	102.9	104.6	116.2	112.6	125.2	127.9	144.3	153.2
J	101.6	107.2	108.7	110.7	138.1	102.5	104.7	118.1	109.8	112.9	120.1	117.4	120.1
J58	84.7	114.1	84.8	96.8	111.6	71.5	72.9	73.3	77.2	82.4	93.7	135.1	149.8
J59	91.7	68.8	139.5	90.2	208.6	69.4	84.9	103.5	81.4	71.5	122.2	99.1	71.2
J60	69.5	89.9	108.0	125.4	88.1	56.1	89.6	74.7	99.6	87.4	79.0	64.5	60.1
J61	112.8	110.8	106.6	109.8	120.0	109.7	110.7	116.0	112.4	120.8	124.8	124.2	123.5
J62	97.3	108.8	109.7	107.1	151.6	104.0	103.4	127.4	111.3	113.2	122.6	115.6	124.8
J63	100.2	99.7	109.5	148.0	134.3	104.0	113.8	110.3	119.1	114.5	107.3	116.4	101.8
L	98.3	103.7	89.1	107.2	116.4	87.1	91.7	91.3	94.8	87.7	109.3	96.8	96.3
M_STS	112.2	111.9	113.1	115.9	161.0	97.3	106.4	115.2	112.3	108.2	124.3	127.1	125.9
M69	95.4	105.7	103.1	111.0	144.7	101.2	108.7	117.2	118.4	129.0	125.8	127.7	122.7
M702	86.4	113.5	102.8	108.6	146.9	120.1	125.9	105.5	108.6	101.7	155.1	179.0	197.9
M71	127.2	115.4	115.1	115.3	200.0	80.8	96.7	118.9	110.3	98.4	102.9	111.7	109.6
M73	107.8	127.7	149.2	151.9	174.3	96.8	106.7	116.9	129.3	115.2	128.9	111.3	98.6
M74	137.9	101.1	103.4	101.0	133.2	93.7	98.8	115.5	98.1	97.6	119.1	112.8	108.3
N	127.7	126.8	119.9	124.3	121.3	104.5	104.8	110.9	109.2	114.4	128.2	126.5	127.1
N77	160.4	161.5	169.0	191.9	187.8	139.9	109.7	126.6	129.1	124.7	131.2	140.3	122.6
N78	106.6	112.5	116.0	115.8	122.6	99.2	108.1	116.0	101.7	123.1	120.5	110.4	111.2
N79	298.4	286.1	168.1	98.3	113.2	105.0	115.4	126.4	139.4	162.0	301.7	326.0	370.0
N80	103.6	97.2	99.6	100.8	105.5	89.4	100.2	97.8	99.3	101.2	98.8	98.9	105.2
N81	112.3	105.2	104.7	101.1	104.2	94.8	98.6	110.2	112.7	106.6	116.5	109.9	103.4
N82	100.3	107.1	103.8	128.9	101.9	105.8	104.0	109.0	101.7	106.5	119.1	105.8	100.2

* Preliminary data.