



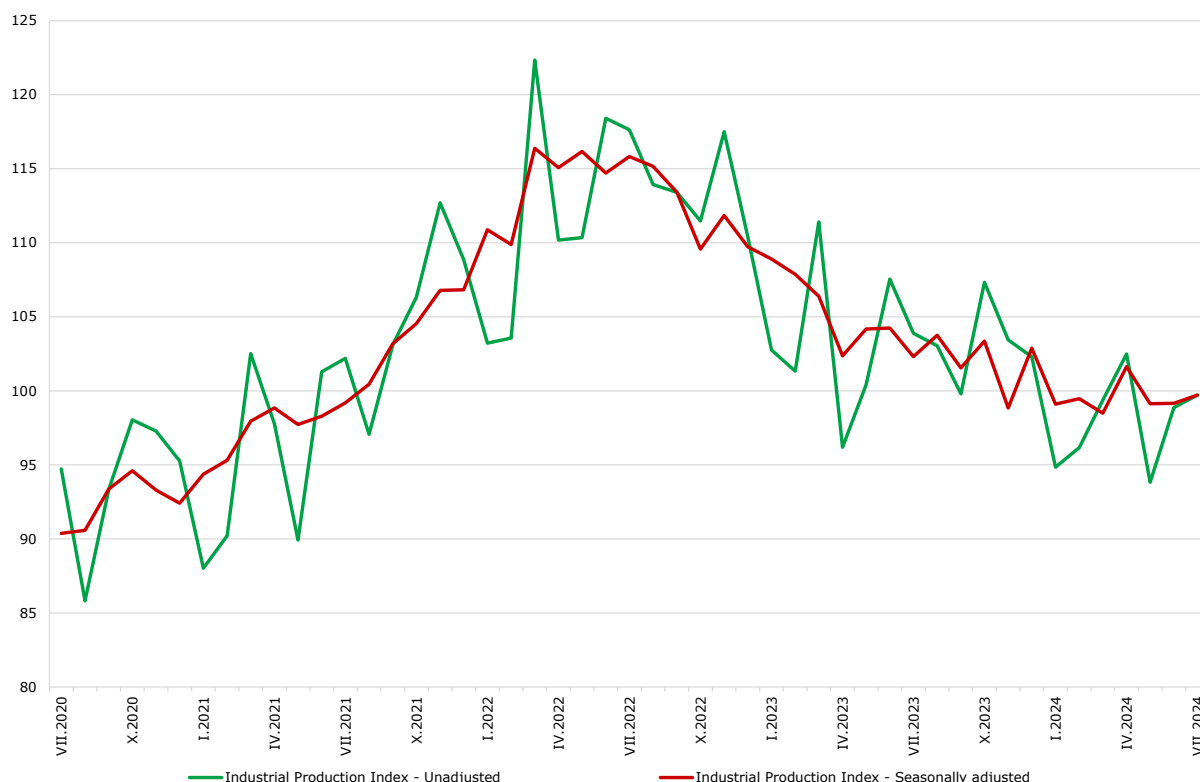
From July 2024, NSI started publishing Industrial Production Indices by base year 2021 = 100 in accordance with the requirements of Regulation (EU) 2019/2152 of the European Parliament and of the Council for European Business Statistics and Commission Implementing Regulation (EU) 2020/1197.

INDUSTRIAL PRODUCTION INDICES IN JULY 2024

The Industrial Production Index increased by 0.6% in July 2024 compared to the previous month. The data are preliminary and seasonally adjusted.

In comparison with July 2023, a decrease of 2.5% was registered in the calendar-adjusted Industrial Production Index.

Figure 1. Industrial Production Indices (2021 = 100)



INDUSTRIAL PRODUCTION INDICES IN JULY 2024

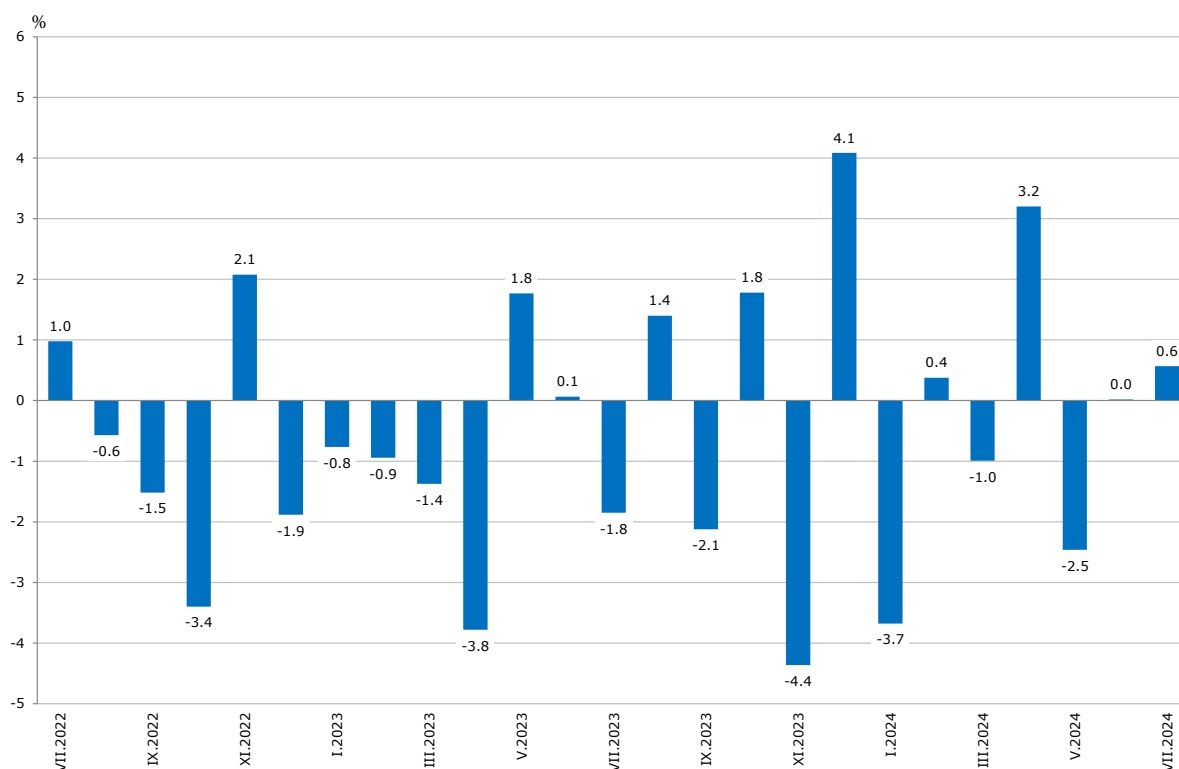
Monthly changes

In July 2024, compared to the previous month, an increase was seen in the electricity, gas, steam and air conditioning supply - by 26.3%, and in the mining and quarrying industry - by 7.6%, while a decrease was registered in the manufacturing - by 0.8%.

In the manufacturing a decrease was reported in the manufacture of basic metals - by 16.3%, in the manufacture of chemicals and chemical products - by 10.2%, in the manufacture of other transport equipment - by 8.0%, and in the printing and reproduction of recorded media - by 6.9%.

A more significant increase was registered in the manufacture of tobacco products - by 24.2%, in the manufacture of fabricated metal products, except machinery and equipment - by 12.7%, and in the manufacture of motor vehicles, trailers and semi-trailers - by 9.1%.

Figure 2. Changes of Industrial Production Indices compared to the previous month
(Seasonally adjusted)

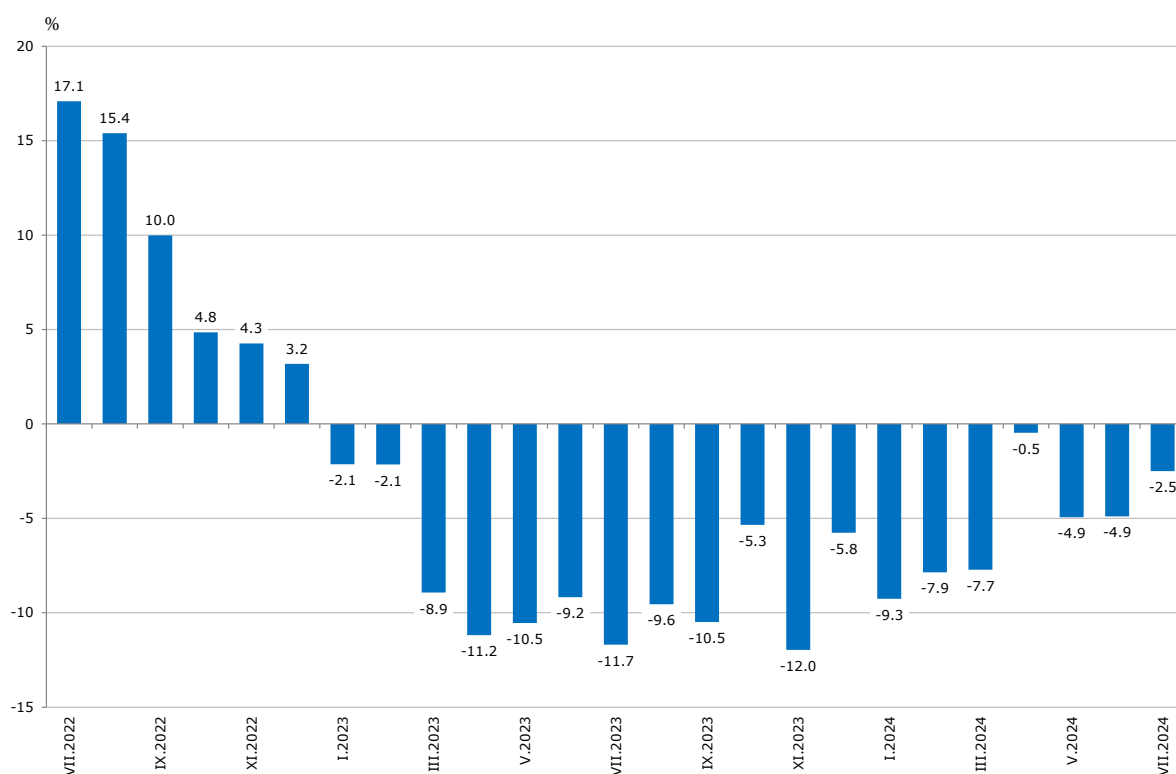


Annual changes

On an annual basis, a drop of the Industrial Production Index was observed in the manufacturing - by 3.6%, and in the mining and quarrying industry - by 1.7%, while an increase was registered in the electricity, gas, steam and air conditioning supply - by 12.4%.

The most significant production decrease in the manufacturing, compared to the same month of the previous year, was registered in the in the manufacture of other transport equipment - by 40.2%, in the other manufacturing - by 25.8%, and in the manufacture of leather and related products - by 22.9%. A growth was seen in the manufacture of tobacco products - by 51.8%, in the manufacture of paper and paper products - by 15.8%, in the manufacture of chemicals and chemical products - by 14.7%, in the manufacture of fabricated metal products, except machinery and equipment - by 12.6%.

Figure 3. Changes of Industrial Production Indices compared to the same month of the previous year (Calendar-adjusted)



Methodological notes

Monthly indices of industrial production are calculated in accordance with the requirements of Regulation (EU) 2019/2152 of the European Parliament and of the Council on European Business Statistics.

The Monthly Industrial Production and Industrial Turnover Indices measure changes in production and turnover values of industrial enterprises. This information can be used to assess the current economic development and for short-term forecasts. Indices do not measure the actual production level; they aim to measure the average change in the value of production between two points in time. Indices are compiled based on information collected through a representative sampling survey on industrial enterprises. The sample covers enterprises with an annual turnover of more than 97% of the total turnover in the industry.

Industrial Production Indices are calculated at a constant base year that is to say they are weighted with the structure of the value added at factor costs in the base year.

Seasonal adjustment is a statistical method, which eliminates the seasonal component of the time series.

Calendar adjustment is an adjustment for variations caused by calendar effects, different number of calendar and working days in the months, national holidays and outliers (for example, the presence of more non-working days in May could contribute to the decline in production in some activities).

Since July 2024, all dynamic rows have been recalculated based on the 2021 base year and have been published in the IS Infostat.

INDUSTRIAL PRODUCTION INDICES IN JULY 2024

Annex

Table 1

Changes of Industrial Production Indices compared to the previous month¹

(Per cent)

Economic activities	NACE.BG - 2008	2024					
		II	III	IV	V	VI	VII*
Industry	B_TO_E36	0.4	-1.0	3.2	-2.5	0.0	0.6
Mining and quarrying	B	-9.5	1.9	3.7	-10.3	1.6	7.6
Mining of coal and lignite	B05	-32.9	35.7	-0.1	-17.7	20.7	25.8
Extraction of crude petroleum and natural gas	B06
Mining of metal ores	B07	-5.2	-2.6	4.4	-4.9	-1.3	-1.8
Other mining and quarrying	B08	19.9	-8.2	1.8	-9.6	-2.1	1.2
Mining support service activities	B09
Manufacturing	C	3.1	-1.3	0.6	-2.8	2.6	-0.8
Manufacture of food products	C10	-1.8	-1.0	2.2	-7.1	4.7	0.7
Manufacture of beverages	C11	0.4	-7.0	9.1	-9.3	4.4	-0.7
Manufacture of tobacco products	C12	20.3	19.6	0.2	-10.9	-15.0	24.2
Manufacture of textiles	C13	6.2	-6.8	0.5	2.9	3.4	-4.1
Manufacture of wearing apparel	C14	-1.8	-3.6	-1.0	1.3	3.0	-1.5
Manufacture of leather and related products	C15	6.0	-9.1	6.0	-2.0	-5.2	-1.3
Manufacture of wood and of products of wood and cork, except furniture; manufacture of articles of straw and plaiting materials	C16	6.0	-5.9	-5.6	-2.7	0.1	0.0
Manufacture of paper and paper products	C17	2.2	-3.2	7.2	-2.4	0.9	6.7
Printing and reproduction of recorded media	C18	-2.8	-0.2	1.1	-2.4	5.4	-6.9
Manufacture of coke and refined petroleum products	C19
Manufacture of chemicals and chemical products	C20	2.9	-1.1	8.6	0.8	7.9	-10.2
Manufacture of basic pharmaceutical products and pharmaceutical preparations	C21	10.6	0.7	-8.1	1.4	-2.1	-2.6
Manufacture of rubber and plastic products	C22	-1.2	2.6	4.0	-3.2	2.3	-0.6
Manufacture of other non-metallic mineral products	C23	14.6	-7.4	3.5	-11.8	4.6	5.7
Manufacture of basic metals	C24	8.7	-0.3	3.6	-0.6	3.4	-16.3
Manufacture of fabricated metal products, except machinery and equipment	C25	-4.3	-2.7	6.9	-5.1	-0.4	12.7
Manufacture of computer, electronic and optical products	C26	18.5	-20.4	-0.5	-4.6	8.0	2.4
Manufacture of electrical equipment	C27	11.0	-6.1	-9.0	-0.9	6.0	1.7
Manufacture of machinery and equipment n.e.c.	C28	7.8	-2.2	-3.0	-3.0	0.0	-1.8
Manufacture of motor vehicles, trailers and semi-trailers	C29	-4.1	-7.1	13.1	-9.5	-7.0	9.1
Manufacture of other transport equipment	C30	9.9	18.0	-1.4	-1.3	-3.9	-8.0
Manufacture of furniture	C31	-0.7	3.6	-5.5	0.4	-4.9	-1.8
Other manufacturing	C32	-10.3	-2.8	-0.7	-1.8	2.9	-2.7
Repair and installation of machinery and equipment	C33	-5.1	-7.1	21.6	-9.1	-0.9	-3.1
Electricity, gas, steam and air conditioning supply	D	-3.2	-6.4	13.4	6.0	-23.8	26.3
Electricity, gas, steam and air conditioning supply	D35	-3.2	-6.4	13.4	6.0	-23.8	26.3

¹ Seasonally adjusted.

* Preliminary data.

„..“ - Confidential data.

INDUSTRIAL PRODUCTION INDICES IN JULY 2024

Table 2

Changes of Industrial Production Indices compared to the same month of the previous year²

(Per cent)

Economic activities	NACE.BG - 2008	2024					
		II	III	IV	V	VI	VII*
Industry	B_TO_E36	-7.9	-7.7	-0.5	-4.9	-4.9	-2.5
Mining and quarrying	B	-20.6	-21.2	-7.7	-15.9	-16.9	-1.7
Mining of coal and lignite	B05	-64.9	-49.5	-50.6	-56.2	-24.0	-8.9
Extraction of crude petroleum and natural gas	B06
Mining of metal ores	B07	-1.9	-20.0	5.8	-9.6	-19.7	-5.7
Other mining and quarrying	B08	16.3	2.3	13.4	-9.8	-12.5	-0.1
Mining support service activities	B09
Manufacturing	C	-3.0	-5.7	-1.8	-6.5	-2.0	-3.6
Manufacture of food products	C10	-1.0	2.3	0.6	-6.9	6.0	2.8
Manufacture of beverages	C11	4.5	-12.2	7.0	-6.0	0.6	-1.8
Manufacture of tobacco products	C12	-41.2	-2.9	10.0	-5.1	-27.9	51.8
Manufacture of textiles	C13	-14.9	-22.3	-15.7	-11.5	-4.2	-7.8
Manufacture of wearing apparel	C14	-18.6	-24.5	-18.6	-15.1	-15.3	-10.6
Manufacture of leather and related products	C15	-17.1	-39.8	-23.9	-26.6	-31.5	-22.9
Manufacture of wood and of products of wood and cork, except furniture; manufacture of articles of straw and plaiting materials	C16	9.6	0.3	1.8	-6.4	-2.0	0.6
Manufacture of paper and paper products	C17	-6.9	-8.9	5.8	1.5	-1.1	15.8
Printing and reproduction of recorded media	C18	7.6	1.6	9.0	3.3	6.5	2.7
Manufacture of coke and refined petroleum products	C19
Manufacture of chemicals and chemical products	C20	1.1	-2.0	7.5	20.5	34.5	14.7
Manufacture of basic pharmaceutical products and pharmaceutical preparations	C21	19.7	34.1	10.5	12.8	6.7	4.3
Manufacture of rubber and plastic products	C22	-13.6	-9.1	-3.0	-9.4	-2.8	-0.9
Manufacture of other non-metallic mineral products	C23	-5.0	-10.9	5.1	-8.4	0.5	3.5
Manufacture of basic metals	C24	23.9	19.8	34.4	19.3	25.2	-2.9
Manufacture of fabricated metal products, except machinery and equipment	C25	11.5	-1.7	9.0	2.6	4.3	12.6
Manufacture of computer, electronic and optical products	C26	7.9	-19.6	-20.0	-25.1	-14.0	-6.2
Manufacture of electrical equipment	C27	-2.8	-10.1	-22.1	-22.0	-19.1	-14.6
Manufacture of machinery and equipment n.e.c.	C28	-11.9	-14.3	-13.4	-20.8	-15.9	-17.0
Manufacture of motor vehicles, trailers and semi-trailers	C29	2.4	-13.3	7.9	-12.7	-16.2	-2.3
Manufacture of other transport equipment	C30	-38.1	-29.1	-23.1	-29.4	-28.1	-40.2
Manufacture of furniture	C31	-3.5	3.3	-13.3	-3.8	-15.2	-8.8
Other manufacturing	C32	-17.2	-26.8	-22.2	-24.6	-22.0	-25.8
Repair and installation of machinery and equipment	C33	-5.9	-6.6	2.9	-3.9	-4.9	-0.6
Electricity, gas, steam and air conditioning supply	D	-24.1	-12.5	9.9	18.4	-18.3	12.4
Electricity, gas, steam and air conditioning supply	D35	-24.1	-12.5	9.9	18.4	-18.3	12.4

² Calendar-adjusted.

* Preliminary data.

„..“ - Confidential data.

INDUSTRIAL PRODUCTION INDICES IN JULY 2024

Table 3

Industrial Production Indices (Seasonally adjusted, 2021 = 100)

NACE.BG - 2008	2023						2024						
	VII	VIII	IX	X	XI	XII	I	II	III	IV	V	VI	VII*
B_TO_E36	102.3	103.7	101.5	103.4	98.8	102.9	99.1	99.5	98.5	101.6	99.1	99.2	99.7
B	84.5	89.8	87.6	95.0	90.6	100.3	88.7	80.2	81.8	84.8	76.0	77.2	83.1
B05	63.8	64.7	53.6	64.7	58.6	69.1	51.7	34.7	47.1	47.0	38.7	46.7	58.8
B06
B07	105.0	108.9	110.7	112.7	112.0	114.8	110.3	104.6	101.9	106.4	101.2	100.0	98.2
B08	88.7	88.1	82.2	100.2	86.8	90.1	88.3	105.9	97.3	99.0	89.5	87.6	88.7
B09
C	108.7	110.1	107.6	108.2	104.7	106.6	103.4	106.6	105.2	105.9	103.0	105.6	104.8
C10	100.9	101.0	103.0	105.8	102.6	102.9	106.5	104.6	103.6	105.8	98.3	103.0	103.7
C11	108.1	105.0	105.2	105.6	111.7	106.0	110.8	111.2	103.4	112.8	102.4	106.9	106.2
C12	49.0	101.1	81.3	57.8	63.8	67.4	54.9	66.0	79.0	79.2	70.5	59.9	74.4
C13	68.7	74.1	68.1	65.0	71.2	65.4	62.5	66.4	61.8	62.1	63.9	66.1	63.4
C14	101.0	97.1	105.3	101.2	97.7	99.1	93.7	92.0	88.7	87.8	88.9	91.6	90.3
C15	79.9	81.2	84.2	76.0	85.0	78.4	66.1	70.0	63.7	67.5	66.1	62.7	61.9
C16	88.2	85.6	84.5	90.3	88.2	84.6	96.7	102.6	96.5	91.1	88.7	88.7	88.8
C17	86.6	81.5	92.7	94.6	95.7	90.0	90.2	92.3	89.3	95.7	93.4	94.2	100.5
C18	89.2	87.3	91.2	90.0	91.7	107.3	97.8	95.0	94.8	95.9	93.5	98.6	91.8
C19
C20	91.7	98.5	98.7	111.3	91.7	96.5	97.3	100.1	99.1	107.6	108.5	117.1	105.1
C21	107.0	110.3	111.4	115.1	105.4	94.3	113.4	125.5	126.3	116.1	117.7	115.2	112.2
C22	84.6	83.8	86.7	86.1	87.0	86.6	80.8	79.9	81.9	85.2	82.5	84.4	83.9
C23	92.0	90.4	87.8	87.4	84.0	102.8	88.9	101.9	94.3	97.6	86.1	90.0	95.2
C24	103.9	110.1	116.6	108.9	106.6	104.9	105.7	114.9	114.6	118.8	118.1	122.0	102.1
C25	145.6	154.3	128.7	152.1	138.9	133.5	154.4	147.7	143.7	153.6	145.8	145.2	163.7
C26	111.7	117.5	104.5	98.6	96.0	93.7	105.7	125.2	99.7	99.2	94.7	102.2	104.7
C27	115.6	114.7	107.0	101.6	98.7	104.4	97.2	107.9	101.3	92.2	91.3	96.8	98.4
C28	100.9	95.5	100.5	95.1	93.0	98.1	86.0	92.8	90.7	88.0	85.3	85.4	83.9
C29	119.3	132.6	122.8	135.1	119.0	109.5	125.9	120.7	112.1	126.8	114.8	106.7	116.5
C30	143.8	152.6	129.4	106.9	92.5	103.5	77.7	85.4	100.8	99.4	98.2	94.4	86.8
C31	81.7	78.6	76.1	72.8	75.7	87.2	81.9	81.4	84.3	79.7	80.0	76.1	74.7
C32	157.6	160.7	137.2	146.2	126.4	140.4	137.4	123.2	119.8	119.0	116.8	120.2	117.0
C33	110.8	121.0	116.9	125.2	117.0	124.0	117.7	111.7	103.8	126.2	114.8	113.7	110.3
D	77.9	80.0	79.8	78.8	77.9	87.6	83.3	80.6	75.5	85.6	90.7	69.2	87.3
D35	77.9	80.0	79.8	78.8	77.9	87.6	83.3	80.6	75.5	85.6	90.7	69.2	87.3

* Preliminary data.

„..“ - Confidential data.

INDUSTRIAL PRODUCTION INDICES IN JULY 2024

Table 4

Industrial Production Indices (Calendar-adjusted, 2021 = 100)

NACE.BG - 2008	2023						2024						
	VII	VIII	IX	X	XI	XII	I	II	III	IV	V	VI	VII*
B_TO_E36	105.9	101.6	101.5	107.6	102.4	105.8	93.9	94.0	101.8	98.8	94.8	101.3	103.3
B	82.1	87.8	91.3	106.3	97.3	110.4	86.5	76.4	79.7	78.3	70.8	74.1	80.8
B05	56.2	60.3	59.7	87.9	75.1	88.7	67.8	37.1	40.2	25.9	17.5	24.2	51.2
B06
B07	92.8	106.5	111.5	116.4	115.0	129.4	111.0	99.4	97.6	109.8	96.7	97.2	87.5
B08	92.5	91.1	87.8	113.5	96.1	91.1	63.7	85.4	93.8	96.7	92.4	93.7	92.4
B09
C	113.1	105.7	108.7	115.4	107.9	103.9	93.7	98.6	108.5	105.7	102.0	111.4	109.1
C10	100.6	102.0	107.0	115.8	106.1	106.7	97.6	92.4	104.5	102.6	97.2	103.9	103.4
C11	133.4	130.6	114.2	99.1	103.4	98.4	80.8	80.9	96.5	109.8	103.9	127.7	131.0
C12	63.0	105.4	87.9	60.9	62.2	62.8	32.8	43.8	80.0	85.4	80.9	72.5	95.5
C13	68.3	62.5	66.8	68.4	76.3	60.3	57.8	67.0	66.0	60.5	67.4	71.4	63.0
C14	114.0	90.9	104.5	103.5	97.5	95.9	98.1	92.2	89.7	79.1	81.9	98.0	101.9
C15	88.2	64.9	84.4	80.9	95.4	72.7	64.7	67.8	68.5	64.4	62.0	66.9	68.0
C16	94.4	83.4	86.7	96.2	93.7	78.9	81.8	91.5	98.0	91.7	92.8	93.3	95.0
C17	89.1	77.4	91.0	100.8	99.7	84.0	88.3	88.1	93.1	93.2	93.4	97.9	103.3
C18	88.4	81.9	87.9	96.4	103.4	113.9	87.9	86.6	96.6	94.2	93.4	101.9	90.8
C19
C20	92.8	93.8	97.4	112.4	93.6	95.6	91.7	94.9	108.6	109.4	107.6	120.8	106.4
C21	104.7	97.3	106.8	120.1	110.4	98.1	109.4	116.3	139.0	115.8	115.8	123.5	109.2
C22	88.4	79.2	88.7	95.0	87.7	77.7	74.4	75.6	85.9	84.4	82.7	88.7	87.6
C23	99.6	95.1	94.0	97.3	90.1	92.4	64.3	85.1	93.3	99.9	91.0	95.3	103.1
C24	100.2	103.1	112.3	113.6	108.8	102.1	107.5	112.2	122.7	119.3	119.5	123.3	97.3
C25	157.3	150.6	129.6	158.8	152.6	139.9	120.7	132.3	144.3	156.8	142.0	152.8	177.1
C26	115.5	104.4	104.2	110.4	99.4	88.5	101.4	122.2	102.6	97.8	92.2	107.3	108.4
C27	121.3	104.8	110.1	106.8	103.6	94.6	90.5	108.6	107.4	89.6	85.7	104.9	103.6
C28	105.8	83.0	101.0	101.5	98.3	93.6	77.3	89.6	96.3	90.0	84.2	90.9	87.8
C29	110.2	115.9	125.9	148.8	131.8	99.4	127.3	122.9	119.2	125.0	110.8	108.4	107.7
C30	151.4	131.9	126.1	112.4	93.4	88.3	61.2	80.4	113.2	104.1	99.7	104.3	90.6
C31	85.1	73.9	77.0	77.7	80.5	87.5	72.2	75.1	87.2	78.2	79.0	81.2	77.6
C32	158.5	161.6	144.8	160.3	135.0	127.8	120.0	108.1	121.2	115.3	114.4	137.5	117.6
C33	112.1	118.3	122.6	130.1	128.3	165.1	86.2	95.7	104.3	114.9	108.9	116.9	111.5
D	81.4	85.0	68.2	68.8	77.6	114.9	101.0	81.5	81.5	72.0	70.0	64.1	91.5
D35	81.4	85.0	68.2	68.8	77.6	114.9	101.0	81.5	81.5	72.0	70.0	64.1	91.5

* Preliminary data.

„..“ - Confidential data.