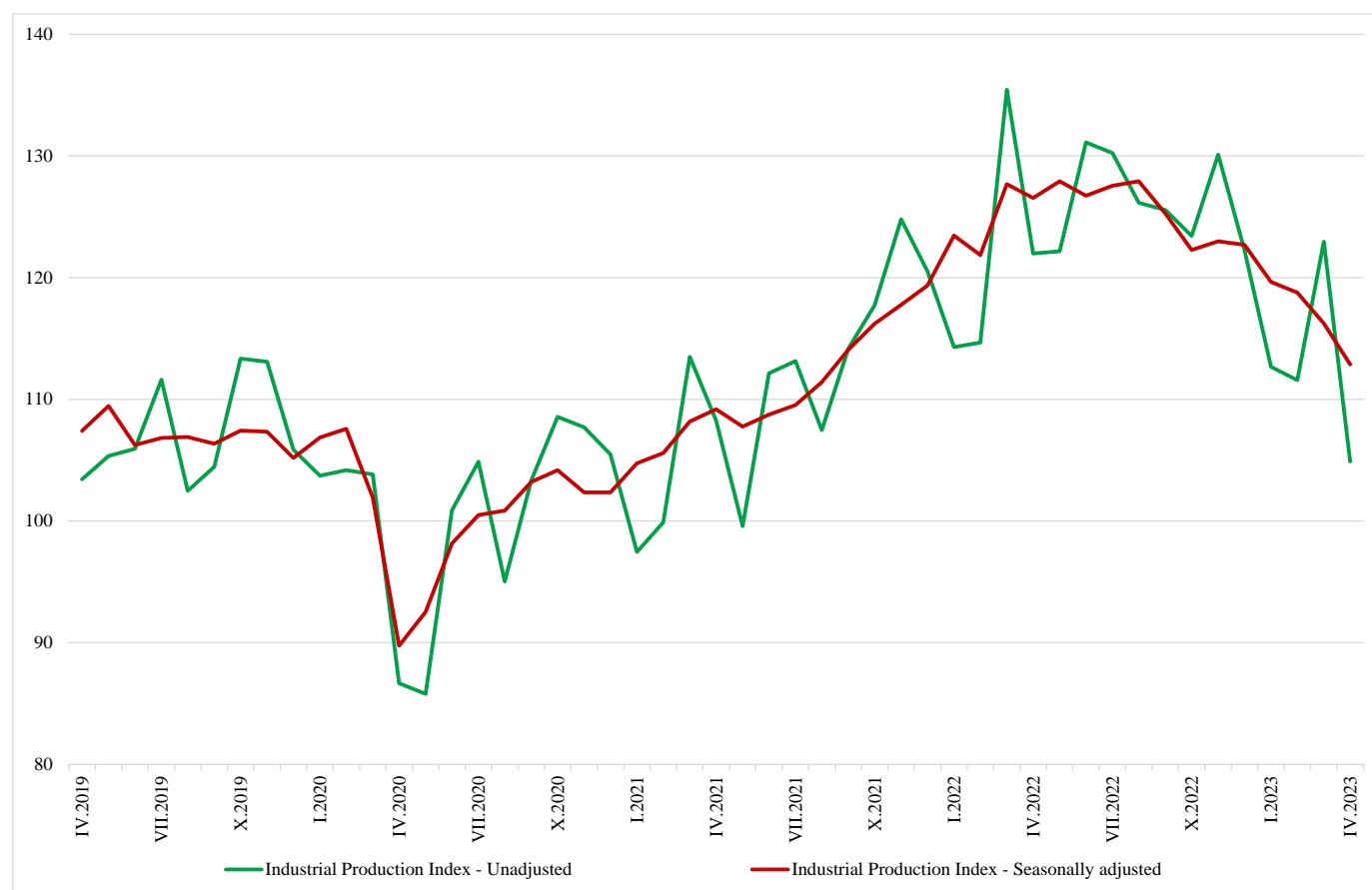


INDUSTRIAL PRODUCTION INDICES IN APRIL 2023¹

The Industrial Production Index² decreased by 2.9% in April 2023 compared to March 2023. The data are preliminary and seasonally adjusted³.

In April 2023, a decline of 12.6% was registered in the calendar-adjusted Industrial Production Index in comparison with the same month in 2022.

Figure 1. Industrial Production Indices (2015 = 100)



¹ April 2023 data is preliminary. The final data on Industrial Production and Turnover Indices for March 2023 can be found on the NSI website: <http://www.nsi.bg/en>.

² The Monthly Industrial Production and Industrial Turnover Indices measure changes in production and turnover values of industrial enterprises. This information can be used to assess the current economic development and for short-term forecasts. Indices do not measure the actual production level; they aim to measure the average change in the value of production between two points in time. Indices are compiled based on information collected through a representative sampling survey on industrial enterprises. The sample covers enterprises with an annual turnover of more than 97% of the total turnover in the industry.

Industrial Production Indices are calculated at a constant base year that is to say they are weighted with the structure of the value added at factor costs in the base year.

³ Seasonal adjustment is a statistical method, which eliminates the seasonal component of the time series.

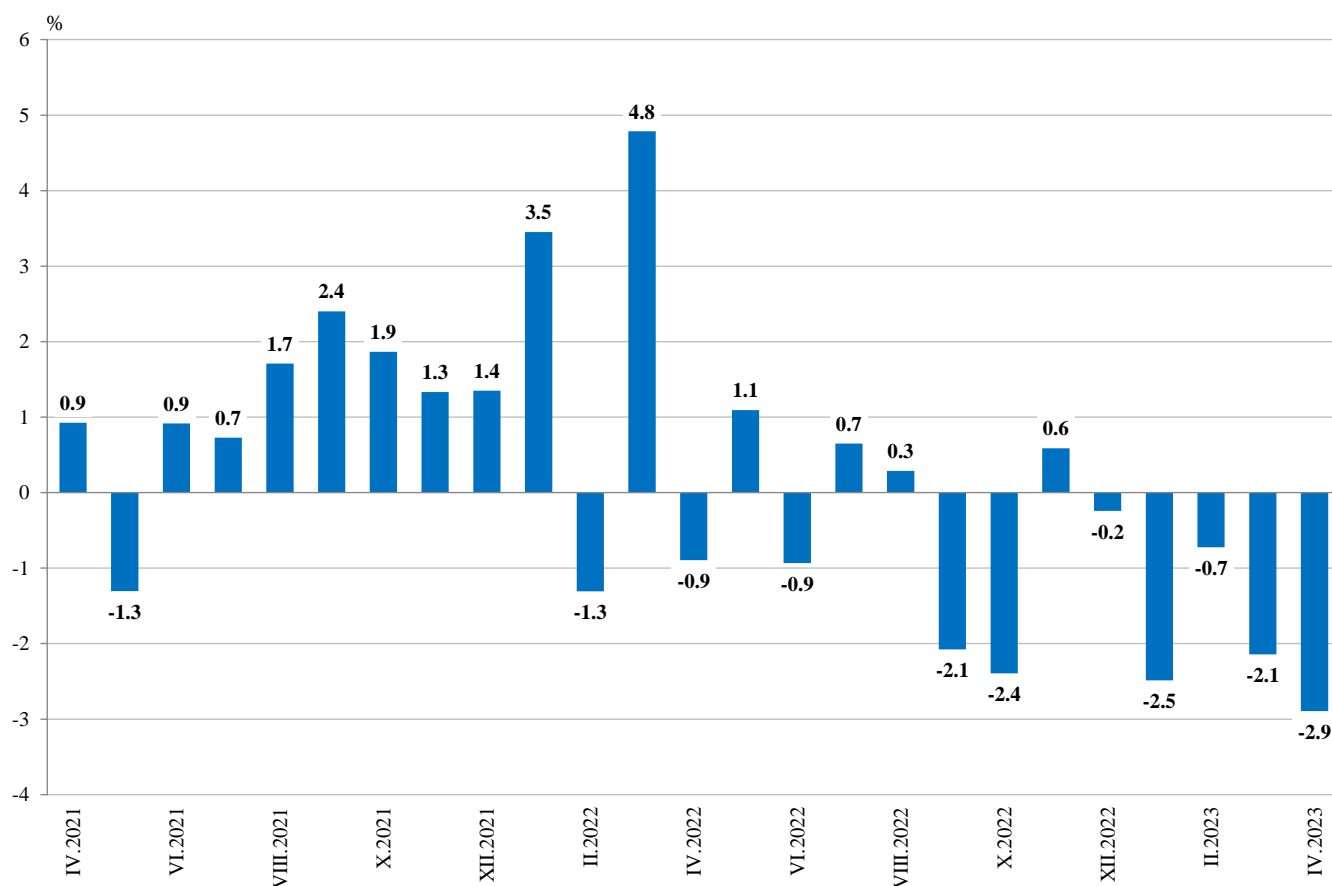
Monthly changes

Compared to the previous month, a drop was reported in the mining and quarrying industry - by 8.4%, in the electricity, gas, steam and air conditioning supply - by 6.9%, and in the manufacturing - by 3.0%.

The more considerable decreases were registered in the manufacture of leather and related products - by 11.9%, in the manufacture of other non-metallic mineral products - by 11.4%, in the manufacture of wood and of products of wood and cork, except furniture; manufacture of articles of straw and plaiting materials - by 8.7%, in the manufacture of motor vehicles, trailers and semi-trailers - by 8.6%, and in the manufacture of wearing apparel and manufacture of basic metals - by 7.4%.

An increase was seen in the repair and installation of machinery and equipment - by 12.9%, in the manufacture of furniture - by 11.4%, in the manufacture of basic pharmaceutical products and pharmaceutical preparations - by 5.1%, and in the manufacture of food products - by 4.3%.

Figure 2. Changes of Industrial Production Indices compared to the previous month (Seasonally adjusted)



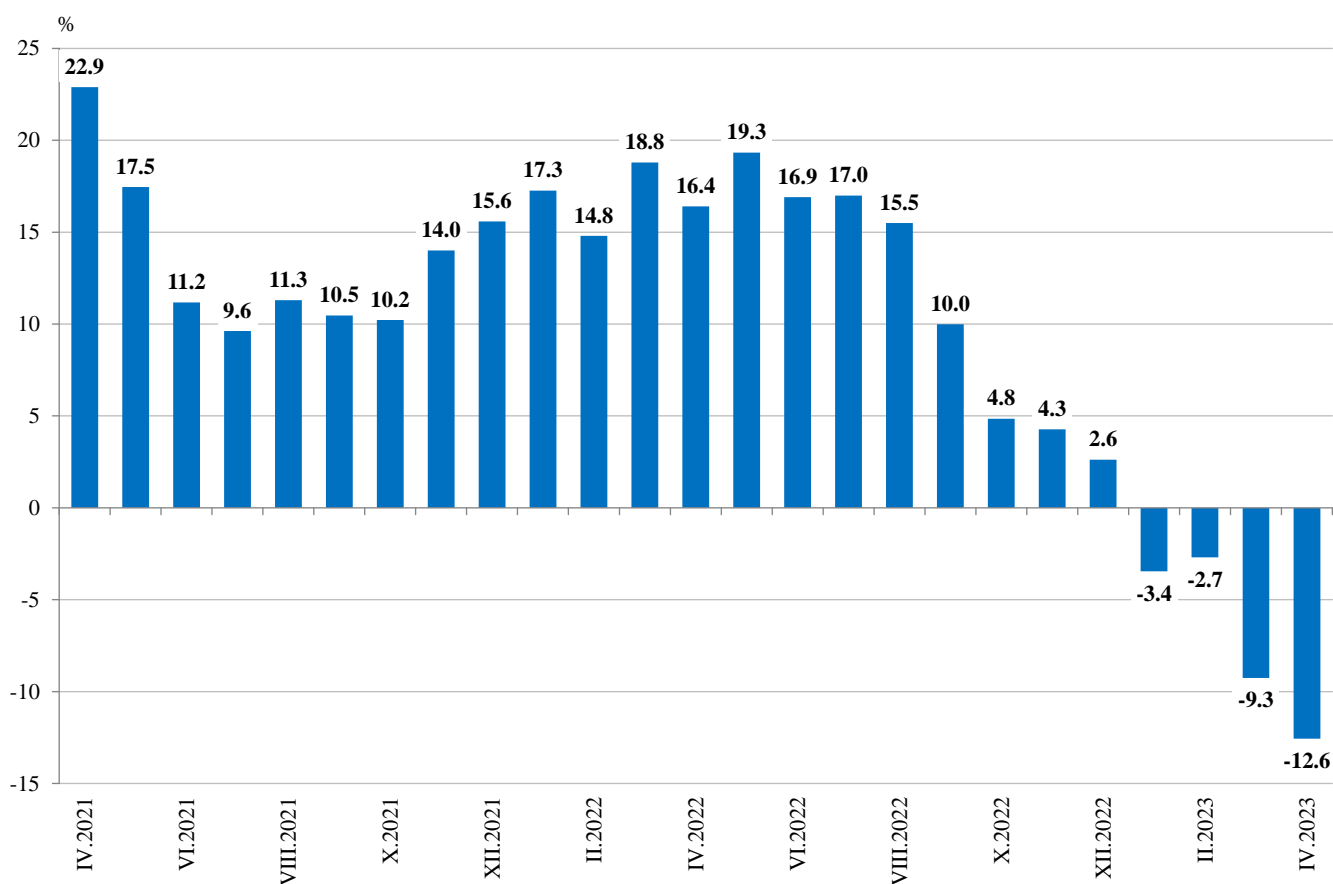
Annual changes

Compared to April 2022, a drop was reported in the electricity, gas, steam and air conditioning supply - by 38.7%, in the mining and quarrying industry - by 10.5%, and in the manufacturing - by 8.2%.

A decline was observed in the manufacture of wood and of products of wood and cork, except furniture; manufacture of articles of straw and plaiting materials - by 31.3%, in the manufacture of textiles - by 31.2%, in the manufacture of basic metals - by 21.8%, in the manufacture of other non-metallic mineral products - by 17.1%.

An increase was seen in the manufacture of other transport equipment - by 18.0%, in the repair and installation of machinery and equipment - by 14.1%, in the manufacture of motor vehicles, trailers and semi-trailers - by 13.6%.

Figure 3. Changes of Industrial Production Indices compared to the same month of the previous year (Calendar-adjusted)





Annex

Table 1

Changes of Industrial Production Indices compared to the previous month¹

(Per cent)

Economic activities	NACE.BG - 2008	2022		2023			
		XI	XII	I	II	III	IV*
Industry	B_TO_E36	0.6	-0.2	-2.5	-0.7	-2.1	-2.9
Mining and quarrying	B	5.4	5.6	-10.6	3.7	1.5	-8.4
Mining of coal and lignite	B05	20.2	-7.3	-8.8	-0.6	-15.7	-14.8
Extraction of crude petroleum and natural gas	B06
Mining of metal ores	B07	3.5	25.1	-29.7	19.1	20.5	-14.7
Other mining and quarrying	B08	-2.2	-4.1	19.5	-16.6	1.9	-10.6
Mining support service activities	B09
Manufacturing	C	-2.1	2.7	-2.2	-3.2	0.6	-3.0
Manufacture of food products	C10	-5.3	9.8	-0.6	-8.5	-0.2	4.3
Manufacture of beverages	C11	-0.2	1.5	0.0	-7.9	7.5	-6.4
Manufacture of tobacco products	C12	-31.2	15.3	21.8	-0.3	-15.7	3.5
Manufacture of textiles	C13	5.2	0.0	-7.9	-8.2	-0.9	-6.3
Manufacture of wearing apparel	C14	-5.2	1.0	-3.5	6.4	0.2	-7.4
Manufacture of leather and related products	C15	-3.3	-0.1	-3.4	-2.5	18.0	-11.9
Manufacture of wood and of products of wood and cork, except furniture; manufacture of articles of straw and plaiting materials	C16	4.1	-8.0	-5.6	0.5	0.9	-8.7
Manufacture of paper and paper products	C17	-0.9	-7.1	3.8	-6.4	-0.9	-6.8
Printing and reproduction of recorded media	C18	-6.1	0.9	-1.1	-0.8	3.8	-4.6
Manufacture of coke and refined petroleum products	C19
Manufacture of chemicals and chemical products	C20	19.9	7.4	-13.7	-6.1	1.6	0.4
Manufacture of basic pharmaceutical products and pharmaceutical preparations	C21	-8.8	23.8	-13.0	3.0	-8.8	5.1
Manufacture of rubber and plastic products	C22	-8.0	7.3	-0.1	-1.3	-1.3	-0.1
Manufacture of other non-metallic mineral products	C23	-4.3	1.4	10.2	-8.0	-3.7	-11.4
Manufacture of basic metals	C24	-6.2	3.5	-4.7	-9.1	1.7	-7.4
Manufacture of fabricated metal products, except machinery and equipment	C25	10.5	-15.6	30.3	-16.7	9.7	-5.1
Manufacture of computer, electronic and optical products	C26	-23.1	4.3	10.2	-1.0	0.8	0.4
Manufacture of electrical equipment	C27	2.3	5.3	-4.1	-1.4	-1.1	2.0
Manufacture of machinery and equipment n.e.c.	C28	-6.1	-3.1	1.6	1.0	-0.5	-2.6
Manufacture of motor vehicles, trailers and semi-trailers	C29	4.8	10.8	-14.6	-2.2	7.4	-5.6
Manufacture of other transport equipment	C30	-6.8	-1.9	-4.1	-8.2	11.8	-8.6
Manufacture of furniture	C31	-5.1	-0.6	-12.8	2.7	-1.2	11.4
Other manufacturing	C32	1.7	9.0	-7.9	1.6	6.0	-5.8
Repair and installation of machinery and equipment	C33	-2.5	0.6	25.3	-13.9	-6.7	12.9
Electricity, gas, steam and air conditioning supply	D	36.1	-13.7	-2.2	11.0	-17.8	-6.9
Electricity, gas, steam and air conditioning supply	D35	36.1	-13.7	-2.2	11.0	-17.8	-6.9

¹ Seasonally adjusted.

* Preliminary data.

„..“ - Confidential data.



Table 2

Changes of Industrial Production Indices compared to the same month of the previous year¹

(Per cent)

Economic activities	NACE.BG - 2008	2022		2023			
		XI	XII	I	II	III	IV*
Industry	B_TO_E36	4.3	2.6	-3.4	-2.7	-9.3	-12.6
Mining and quarrying	B	-5.5	2.6	-18.2	-10.4	-14.7	-10.5
Mining of coal and lignite	B05	-4.5	-9.2	-26.4	-30.1	-50.8	-53.9
Extraction of crude petroleum and natural gas	B06
Mining of metal ores	B07	-8.7	13.6	-15.6	8.8	19.4	28.0
Other mining and quarrying	B08	-0.1	-8.2	11.5	-9.1	-8.5	-16.7
Mining support service activities	B09
Manufacturing	C	7.9	10.0	4.7	0.8	-1.4	-8.2
Manufacture of food products	C10	-5.3	5.4	-0.4	-7.7	-14.3	-10.1
Manufacture of beverages	C11	9.2	11.1	9.7	1.3	9.6	-6.2
Manufacture of tobacco products	C12	-31.6	5.9	25.9	47.1	-10.2	-13.8
Manufacture of textiles	C13	-7.2	-17.0	-21.1	-25.0	-25.0	-31.2
Manufacture of wearing apparel	C14	3.5	2.7	-6.0	6.0	-2.6	-14.2
Manufacture of leather and related products	C15	-16.4	-14.8	-22.6	-23.1	7.7	-15.7
Manufacture of wood and of products of wood and cork, except furniture; manufacture of articles of straw and plaiting materials	C16	15.3	-6.3	-20.0	-18.3	-25.4	-31.3
Manufacture of paper and paper products	C17	7.4	-7.5	1.8	-4.9	-7.5	-14.7
Printing and reproduction of recorded media	C18	-16.1	-11.6	-13.1	-6.8	-7.3	-13.7
Manufacture of coke and refined petroleum products	C19
Manufacture of chemicals and chemical products	C20	-1.9	0.3	-20.9	-22.5	-19.4	-11.9
Manufacture of basic pharmaceutical products and pharmaceutical preparations	C21	-8.4	25.5	-0.1	14.0	-2.9	-3.9
Manufacture of rubber and plastic products	C22	-14.4	-8.5	-12.7	-11.2	-12.2	-12.0
Manufacture of other non-metallic mineral products	C23	-1.0	9.1	11.1	-2.6	-4.2	-17.1
Manufacture of basic metals	C24	-5.1	9.8	-5.3	-17.8	-14.3	-21.8
Manufacture of fabricated metal products, except machinery and equipment	C25	54.5	24.8	57.6	36.2	44.6	-5.4
Manufacture of computer, electronic and optical products	C26	-16.0	15.4	5.7	11.1	7.0	-5.4
Manufacture of electrical equipment	C27	14.9	20.2	11.2	9.1	4.7	3.6
Manufacture of machinery and equipment n.e.c.	C28	2.0	-2.4	-5.8	-3.6	-6.5	-9.4
Manufacture of motor vehicles, trailers and semi-trailers	C29	37.1	24.6	14.7	2.5	8.1	13.6
Manufacture of other transport equipment	C30	56.6	28.6	49.8	11.5	49.1	18.0
Manufacture of furniture	C31	-7.1	-3.5	-28.8	-23.8	-25.4	-8.9
Other manufacturing	C32	17.7	13.6	19.4	19.1	6.9	-1.5
Repair and installation of machinery and equipment	C33	23.2	-0.3	33.1	8.0	-13.8	14.1
Electricity, gas, steam and air conditioning supply	D	-7.2	-23.7	-27.3	-12.0	-39.3	-38.7
Electricity, gas, steam and air conditioning supply	D35	-7.2	-23.7	-27.3	-12.0	-39.3	-38.7

¹ Calendar-adjusted.

* Preliminary data.

„...“ - Confidential data.



Table 3

Industrial Production Indices
(Seasonally adjusted, 2015 = 100)

NACE.BG 2008	2022									2023			
	IV	V	VI	VII	VIII	IX	X	XI	XII	I	II	III	IV*
B_TO_E36	126.5	127.9	126.7	127.6	127.9	125.3	122.3	123.0	122.7	119.6	118.8	116.2	112.9
B	118.7	133.3	118.6	126.6	116.9	119.8	111.9	117.9	124.6	111.3	115.4	117.2	107.4
B05	119.4	130.8	113.7	121.7	102.8	109.2	90.9	109.2	101.3	92.4	91.8	77.4	66.0
B06
B07	103.3	130.9	123.8	119.4	121.0	124.1	118.7	122.9	153.8	108.1	128.7	155.1	132.2
B08	144.6	139.9	141.2	141.1	142.6	147.8	145.3	142.1	136.3	162.8	135.8	138.3	123.7
B09
C	133.3	135.4	133.1	131.0	132.5	134.5	135.0	132.2	135.9	132.9	128.6	129.4	125.5
C10	128.7	129.3	121.8	117.6	129.1	117.7	117.7	111.4	122.3	121.6	111.3	111.0	115.8
C11	108.9	105.2	108.0	102.4	106.5	105.6	110.9	110.6	112.3	112.3	103.4	111.1	104.0
C12	40.1	41.7	44.9	38.6	43.6	38.6	43.1	29.6	34.2	41.6	41.5	35.0	36.2
C13	117.8	110.6	110.1	108.1	116.3	109.8	101.1	106.4	106.3	97.9	89.9	89.1	83.5
C14	88.0	86.3	82.4	80.3	77.5	82.2	83.7	79.3	80.1	77.3	82.2	82.4	76.3
C15	72.4	70.5	69.2	66.7	65.4	67.0	66.7	64.5	64.5	62.3	60.7	71.7	63.1
C16	105.4	106.8	89.8	93.7	85.8	84.7	87.7	91.2	83.9	79.2	79.6	80.4	73.4
C17	107.1	111.2	108.2	111.1	106.9	101.0	112.6	111.6	103.7	107.6	100.7	99.8	93.0
C18	118.6	119.6	109.9	112.9	109.9	109.3	112.3	105.5	106.4	105.3	104.4	108.3	103.3
C19
C20	132.4	135.7	123.3	121.4	112.6	116.0	110.2	132.1	141.9	122.5	115.0	116.8	117.3
C21	129.7	125.2	137.9	126.3	118.8	125.0	129.1	117.8	145.8	126.8	130.6	119.1	125.2
C22	147.2	147.3	142.7	140.8	134.1	136.2	135.2	124.5	133.6	133.4	131.7	130.0	129.8
C23	131.6	134.7	129.7	128.1	133.3	135.0	133.0	127.2	129.1	142.2	130.8	126.0	111.6
C24	119.1	122.3	120.7	118.6	120.3	118.0	118.6	111.3	115.1	109.7	99.7	101.4	93.8
C25	178.5	155.9	150.5	139.6	152.6	155.3	161.3	178.2	150.3	195.9	163.2	179.1	169.9
C26	287.8	296.6	286.1	310.8	277.0	338.9	308.5	237.3	247.4	272.7	269.9	272.0	273.2
C27	164.7	167.1	166.2	165.4	164.5	168.4	166.6	170.5	179.6	172.2	169.8	167.9	171.3
C28	132.1	136.4	131.1	135.1	134.7	129.6	133.6	125.4	121.5	123.4	124.6	123.9	120.7
C29	137.8	141.9	160.5	143.0	159.0	163.4	160.1	167.9	186.0	158.9	155.4	166.9	157.5
C30	241.8	266.1	293.8	335.2	311.4	330.4	363.1	338.5	332.1	318.6	292.6	327.2	299.0
C31	109.9	115.5	110.5	108.3	98.5	105.7	105.9	100.4	99.9	87.1	89.4	88.3	98.4
C32	216.3	222.8	248.9	203.7	201.3	207.8	206.8	210.2	229.1	211.1	214.6	227.4	214.3
C33	118.9	151.1	120.8	124.6	137.2	131.7	121.3	118.2	118.9	149.0	128.3	119.6	135.1
D	101.7	97.8	111.2	125.1	126.0	92.7	67.5	91.9	79.3	77.5	86.1	70.8	65.9
35	101.7	97.8	111.2	125.1	126.0	92.7	67.5	91.9	79.3	77.5	86.1	70.8	65.9

* Preliminary data.

„..“ - Confidential data.



Table 4

Industrial Production Indices
(Calendar-adjusted, 2015 = 100)

NACE.BG - 2008	2020	2021	2022									2023			
	IV	IV	IV	V	VI	VII	VIII	IX	X	XI	XII	I	II	III	IV*
B_TO_E36	86.4	106.2	123.6	123.4	129.9	132.7	124.4	125.6	125.7	128.9	123.7	112.9	112.3	121.2	108.1
B	97.2	102.0	108.9	125.5	114.6	123.0	114.3	125.2	123.5	126.8	137.0	107.5	110.5	115.1	97.5
B05	64.5	66.9	101.2	113.5	94.7	114.7	98.7	114.8	110.8	123.2	117.2	106.0	94.3	71.1	46.7
B06
B07	132.2	120.5	103.3	130.9	123.8	119.4	121.0	124.1	118.7	122.9	153.8	108.1	128.7	155.1	132.2
B08	87.7	143.8	141.4	142.5	151.4	149.6	149.9	161.2	160.5	159.6	136.4	117.7	106.0	132.8	117.8
B09
C	90.9	115.5	135.5	137.2	141.3	136.4	125.4	135.3	142.1	136.6	130.2	120.5	118.3	132.8	124.4
C10	94.6	110.5	123.4	129.0	125.2	118.2	131.1	122.7	128.1	115.7	126.5	109.1	97.2	111.2	111.0
C11	76.8	91.8	104.0	111.2	131.0	127.3	134.5	116.0	104.4	99.6	103.8	79.5	72.5	104.1	97.5
C12	44.0	44.8	45.7	50.4	61.8	49.8	43.5	41.3	47.1	26.3	28.5	26.0	29.0	32.1	39.4
C13	82.7	112.2	119.4	119.0	119.7	109.6	95.1	107.1	107.0	110.1	95.9	90.1	89.7	95.8	82.2
C14	61.9	64.4	81.1	81.0	86.5	91.5	74.0	80.3	85.0	79.2	76.5	81.0	82.9	83.4	69.5
C15	59.3	71.9	70.0	63.0	72.1	74.5	52.4	66.6	71.7	67.7	59.6	64.7	59.4	78.5	59.0
C16	57.2	84.0	107.1	112.0	94.9	101.0	84.5	88.0	93.2	97.1	78.9	65.9	69.4	80.6	73.5
C17	89.8	97.0	105.7	112.5	112.3	114.2	105.3	99.0	116.9	113.4	97.3	104.8	95.8	104.3	90.1
C18	79.5	113.2	117.9	121.0	111.8	113.9	104.5	105.3	121.4	119.4	108.1	93.6	95.5	110.1	101.8
C19
C20	111.7	100.9	134.1	135.2	127.4	123.6	107.2	114.5	110.5	135.5	141.0	115.0	109.2	127.9	118.1
C21	130.9	109.3	129.6	123.0	148.2	126.3	104.3	118.2	131.7	125.6	163.3	120.6	115.7	122.3	124.5
C22	115.8	147.6	144.5	146.0	149.2	148.2	128.3	138.1	148.2	123.8	117.7	124.7	127.3	137.1	127.2
C23	86.1	114.3	135.4	145.6	139.8	138.9	140.9	145.2	148.4	137.4	112.5	102.8	107.4	123.6	112.2
C24	102.4	123.3	120.8	125.1	119.1	116.0	109.3	109.1	125.3	107.0	117.7	114.5	96.5	109.3	94.5
C25	98.9	130.9	181.5	152.5	160.3	148.7	147.3	158.9	166.5	196.4	159.7	151.2	145.9	180.7	171.7
C26	137.4	198.3	283.1	289.7	298.2	321.0	242.8	341.4	352.8	252.8	239.8	258.0	248.9	278.6	267.7
C27	108.1	156.8	165.0	162.0	175.3	169.5	147.2	173.8	178.7	183.2	160.7	162.9	166.4	174.8	171.0
C28	81.0	114.8	136.5	133.8	140.5	142.5	118.6	129.1	142.9	133.0	113.6	112.8	119.7	130.2	123.7
C29	37.3	134.3	135.1	136.9	168.9	134.8	138.9	162.4	167.8	184.3	172.6	159.2	158.7	181.8	153.5
C30	182.3	258.3	255.1	259.6	325.8	348.0	241.2	304.9	384.5	361.3	280.0	279.2	290.6	356.6	301.0
C31	64.6	100.4	104.2	113.3	116.1	114.3	93.8	109.3	116.9	108.4	97.0	76.2	82.4	88.6	94.9
C32	71.5	134.7	211.4	218.1	285.5	205.1	199.3	220.1	222.0	226.9	207.7	183.6	189.9	232.0	208.2
C33	97.7	96.5	106.5	143.3	123.6	127.5	133.7	138.3	124.8	129.2	155.8	109.4	110.7	121.6	121.5
D	64.8	71.8	85.8	71.5	93.2	124.4	124.4	88.0	66.6	103.3	95.5	88.5	93.3	81.2	52.7
D35	64.8	71.8	85.8	71.5	93.2	124.4	124.4	88.0	66.6	103.3	95.5	88.5	93.3	81.2	52.7

* Preliminary data.

„...“ - Confidential data.