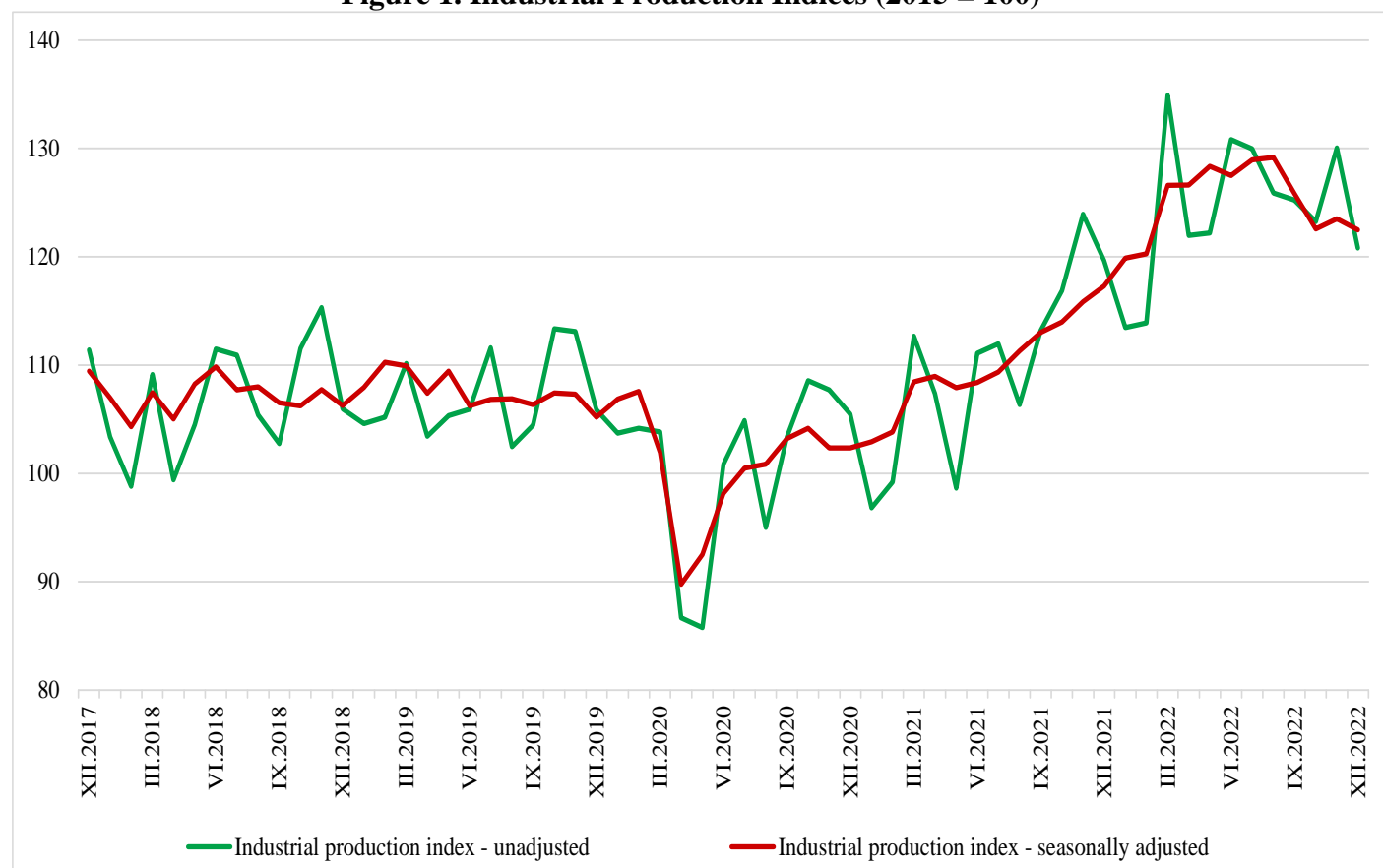


## INDUSTRIAL PRODUCTION INDICES IN DECEMBER 2022<sup>1</sup>

The Industrial Production Index<sup>2</sup> decreased by 0.8% in December 2022 compared to November 2022. The data are preliminary and seasonally adjusted<sup>3</sup>.

In December 2022 the calendar-adjusted<sup>4</sup> Industrial Production Index rose by 2.1% in comparison with the same month in 2021.

**Figure 1. Industrial Production Indices (2015 = 100)**



<sup>1</sup> December 2022 data is preliminary. The final data on Industrial Production and Turnover Indices for November 2022 can be found on the NSI website: <http://www.nsi.bg/en>.

<sup>2</sup> The Monthly Industrial Production and Industrial Turnover Indices measure changes in production and turnover values of industrial enterprises. This information can be used to assess the current economic development and for short-term forecasts. Indices do not measure the actual production level; they aim to measure the average change in the value of production between two points in time. Indices are compiled based on information collected through a representative sampling survey on industrial enterprises. The sample covers enterprises with an annual turnover of more than 97% of the total turnover in the industry. Industrial production indices are calculated at a constant base year that is to say they are weighted with the structure of the value added at factor costs in the base year.

<sup>3</sup> Seasonal adjustment is a statistical method, which eliminates the seasonal component of the time series.

<sup>4</sup> Calendar adjustment is an adjustment for variations caused by calendar effects, different number of calendar and working days in the months, national holidays and outliers (for example, the presence of more non-working days in May could contribute to the decline in production in some activities).

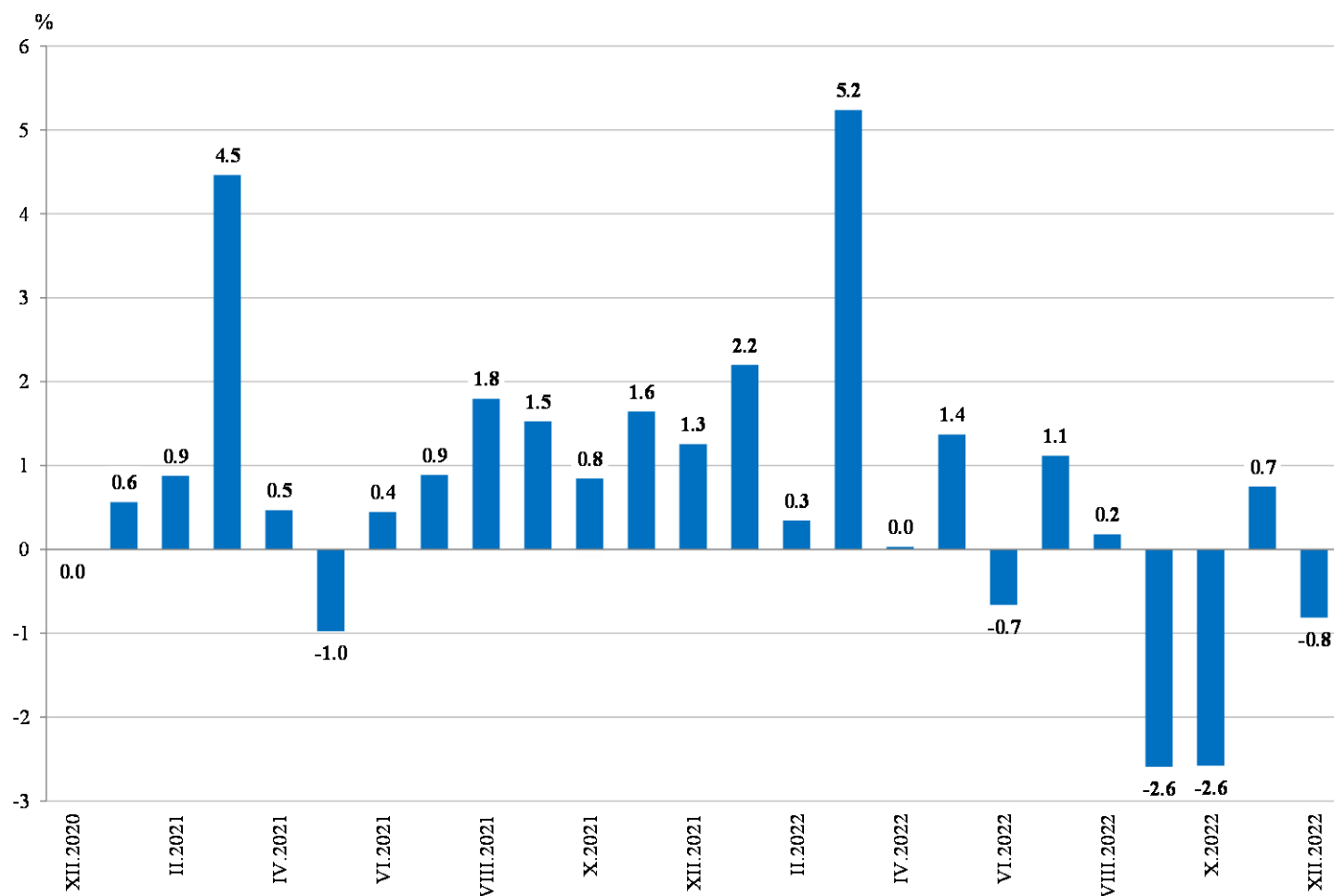
## Monthly changes

Compared to the previous month a decline was reported in the electricity, gas, steam and air conditioning supply - by 26.8% while growth was detected in the mining and quarrying industry - by 10.0% and in the manufacturing - by 2.6%.

An increase was seen in the manufacture of basic pharmaceutical products and pharmaceutical preparations - by 25.6%, in the manufacture of basic metals - by 14.1%, in the other manufacturing - by 10.9%, and in the manufacture of motor vehicles, trailers and semi-trailers - by 10.8%.

A major fall was observed in the manufacture of fabricated metal products, except machinery and equipment - by 16.8%, in the manufacture of wood and of products of wood and cork, except furniture; manufacture of articles of straw and plaiting materials - by 8.9%, and in the manufacture of paper and paper products - by 7.2%.

**Figure 2. Changes of Industrial Production Indices compared to the previous month (Seasonally adjusted)**



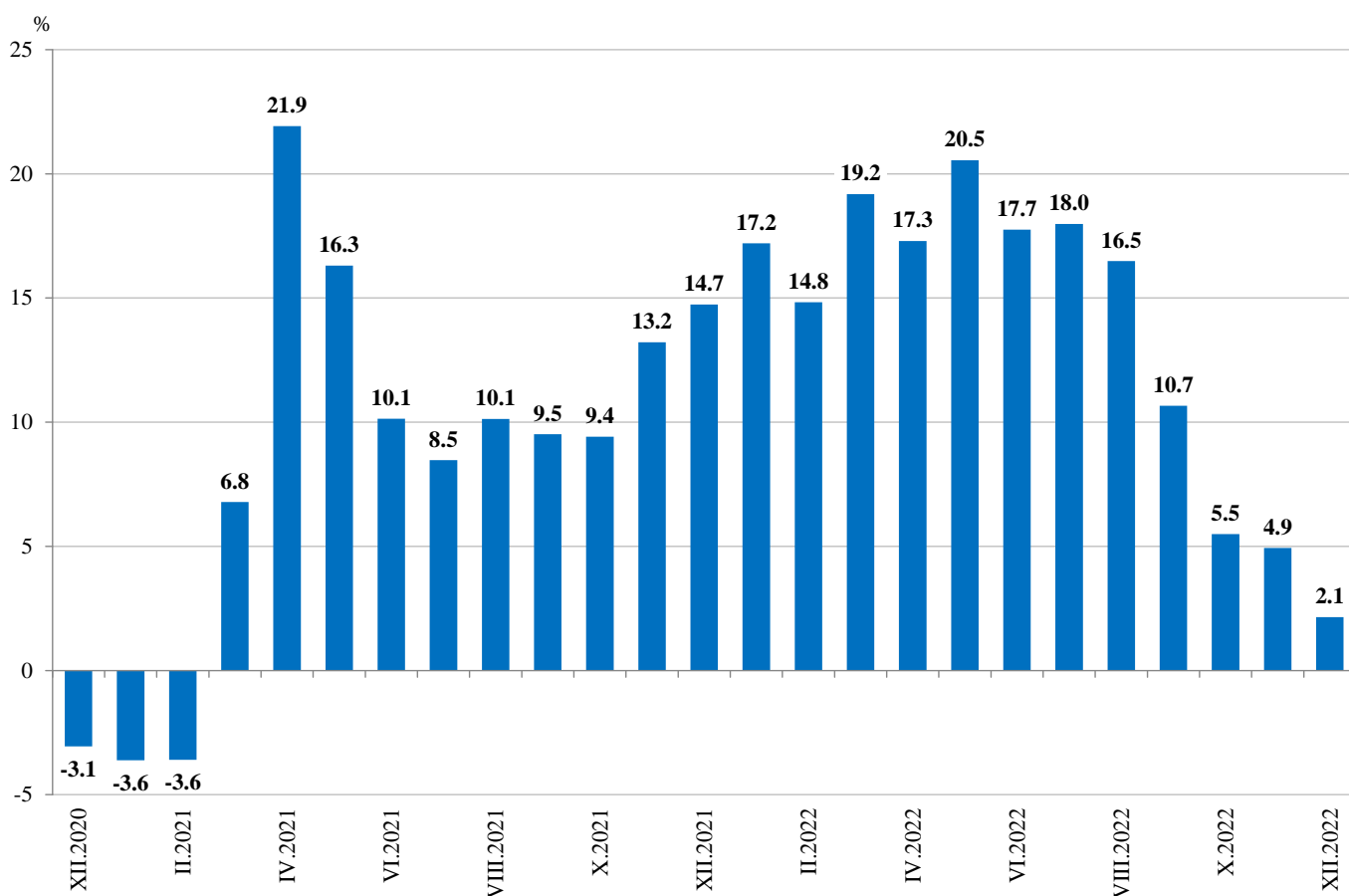
### Annual changes

Compared to November 2021 a growth was registered in manufacturing - by 10.8% and in the mining and quarrying industry - by 1.8%, while a drop was observed in the electricity, gas, steam and air conditioning supply - by 28.6%.

The most significant growth in manufacturing compared to the same month of the previous year was seen in the manufacture of beverages - by 44.7%, in the manufacture of basic pharmaceutical products and pharmaceutical preparations - by 30.7%, in the manufacture of fabricated metal products, except machinery and equipment - by 28.2%, in the manufacture of other transport equipment - by 27.8%, and in the manufacture of motor vehicles, trailers and semi-trailers - by 22.2%.

A decline was reported in the manufacture of textiles - by 18.2%, in the printing and reproduction of recorded media - by 11.6%, in the manufacture of leather and related products - by 11.0%, in the manufacture of wood and of products of wood and cork, except furniture; manufacture of articles of straw and plaiting materials - by 7.7%, in the repair and installation of machinery and equipment - by 6.5% and in the manufacture of rubber and plastic products and in the manufacture of paper and paper products - both by 6.2%.

**Figure 3. Changes of Industrial Production Indices compared to the same month of the previous year (Calendar adjusted)**





Annex

Table 1

Changes of Industrial Production Indices compared to the previous month<sup>1</sup>

(Per cent)

Economic activities	NACE.BG - 2008	2022					
		VII	VIII	IX	X	XI	XII*
<b>Industry</b>	<b>B_TO_E36</b>	<b>1.1</b>	<b>0.2</b>	<b>-2.6</b>	<b>-2.6</b>	<b>0.7</b>	<b>-0.8</b>
<b>Mining and quarrying</b>	<b>B</b>	<b>6.0</b>	<b>-8.1</b>	<b>2.3</b>	<b>-6.8</b>	<b>1.7</b>	<b>10.0</b>
Mining of coal and lignite	B05	7.4	-15.9	5.7	-17.9	22.0	-7.2
Extraction of crude petroleum and natural gas	B06	..	..	..	..	..	..
Mining of metal ores	B07	-3.2	1.1	2.5	-4.6	-8.8	42.0
Other mining and quarrying	B08	-0.3	1.2	3.9	-3.1	-0.8	-6.7
Mining support service activities	B09	..	..	..	..	..	..
<b>Manufacturing</b>	<b>C</b>	<b>-1.5</b>	<b>1.3</b>	<b>1.5</b>	<b>0.2</b>	<b>-1.8</b>	<b>2.6</b>
Manufacture of food products	C10	-2.9	9.5	-9.2	0.2	-5.6	9.5
Manufacture of beverages	C11	-6.1	2.6	-1.9	3.7	-1.2	1.0
Manufacture of tobacco products	C12	-16.4	16.7	-12.6	5.7	-34.8	8.5
Manufacture of textiles	C13	-2.9	6.6	-6.1	-7.7	4.7	-0.2
Manufacture of wearing apparel	C14	-3.2	-3.2	7.1	1.3	-5.3	0.4
Manufacture of leather and related products	C15	-3.0	-1.9	5.2	-1.1	-3.0	1.4
Manufacture of wood and of products of wood and cork, except furniture; manufacture of articles of straw and plaiting materials	C16	4.2	-8.2	-1.7	3.7	3.8	-8.9
Manufacture of paper and paper products	C17	0.8	-4.5	-5.0	11.9	-1.2	-7.2
Printing and reproduction of recorded media	C18	2.6	-2.6	-0.6	2.3	-6.0	1.0
Manufacture of coke and refined petroleum products	C19	..	..	..	..	..	..
Manufacture of chemicals and chemical products	C20	-3.5	-6.1	2.9	-4.4	20.1	7.4
Manufacture of basic pharmaceutical products and pharmaceutical preparations	C21	-8.5	-9.0	7.8	6.3	-9.3	25.6
Manufacture of rubber and plastic products	C22	-1.8	-4.8	1.4	-1.1	-5.7	6.6
Manufacture of other non-metallic mineral products	C23	-0.7	4.1	0.0	-2.5	-3.0	1.9
Manufacture of basic metals	C24	-4.6	4.5	0.1	-3.3	-10.2	14.1
Manufacture of fabricated metal products, except machinery and equipment	C25	-7.1	9.4	1.4	4.7	10.5	-16.8
Manufacture of computer, electronic and optical products	C26	8.5	-9.9	22.6	-10.9	-23.0	3.8
Manufacture of electrical equipment	C27	-0.5	-1.1	2.9	-0.9	2.5	5.0
Manufacture of machinery and equipment n.e.c.	C28	3.9	-0.8	-3.9	1.8	-6.7	-2.8
Manufacture of motor vehicles, trailers and semi-trailers	C29	-11.0	11.3	2.8	-1.0	4.8	10.8
Manufacture of other transport equipment	C30	13.3	-9.1	8.9	12.6	-6.8	-2.2
Manufacture of furniture	C31	-2.6	-8.4	7.5	-0.1	-5.3	0.8
Other manufacturing	C32	-18.8	-0.4	2.9	0.1	1.1	10.9
Repair and installation of machinery and equipment	C33	3.7	9.1	-3.1	-8.9	-3.1	-2.6
<b>Electricity, gas, steam and air conditioning supply</b>	<b>D</b>	<b>13.8</b>	<b>-6.4</b>	<b>-12.1</b>	<b>-27.4</b>	<b>35.5</b>	<b>-26.8</b>
Electricity, gas, steam and air conditioning supply	D35	13.8	-6.4	-12.1	-27.4	35.5	-26.8

<sup>1</sup> Seasonally adjusted.

\* Preliminary data.

„..“ - Confidential data.



Table 2

Changes of Industrial Production Indices compared to the same month of the previous year<sup>1</sup>

(Per cent)

Economic activities	NACE.BG - 2008	2022					
		VII	VIII	IX	X	XI	XII*
<b>Industry</b>	<b>B_TO_E36</b>	<b>18.0</b>	<b>16.5</b>	<b>10.7</b>	<b>5.5</b>	<b>4.9</b>	<b>2.1</b>
<b>Mining and quarrying</b>	<b>B</b>	<b>19.8</b>	<b>-6.0</b>	<b>-2.4</b>	<b>-2.6</b>	<b>-9.6</b>	<b>1.8</b>
Mining of coal and lignite	B05	73.8	5.0	-0.1	-19.6	-4.5	-9.2
Extraction of crude petroleum and natural gas	B06	..	..	..	..	..	..
Mining of metal ores	B07	0.1	-13.7	-6.7	8.7	-19.8	13.2
Other mining and quarrying	B08	-0.5	8.9	5.9	11.4	4.1	-7.4
Mining support service activities	B09	..	..	..	..	..	..
<b>Manufacturing</b>	<b>C</b>	<b>12.4</b>	<b>12.7</b>	<b>14.0</b>	<b>14.2</b>	<b>8.9</b>	<b>10.8</b>
Manufacture of food products	C10	2.2	17.1	4.0	2.1	-5.3	5.0
Manufacture of beverages	C11	29.6	41.9	43.8	47.1	40.0	44.7
Manufacture of tobacco products	C12	-20.7	32.6	-7.5	33.7	-30.8	-3.3
Manufacture of textiles	C13	-2.7	-6.0	-9.9	-21.6	-8.5	-18.2
Manufacture of wearing apparel	C14	15.2	2.3	15.8	14.7	3.7	2.2
Manufacture of leather and related products	C15	-11.3	-8.5	-0.9	-6.6	-15.4	-11.0
Manufacture of wood and of products of wood and cork, except furniture; manufacture of articles of straw and plaiting materials	C16	11.5	-6.8	-6.8	10.2	15.0	-7.7
Manufacture of paper and paper products	C17	6.6	-2.5	-9.7	6.2	7.5	-6.2
Printing and reproduction of recorded media	C18	-4.5	-12.8	-6.6	-7.2	-16.1	-11.6
Manufacture of coke and refined petroleum products	C19	..	..	..	..	..	..
Manufacture of chemicals and chemical products	C20	-3.4	-7.8	-3.5	-16.8	-1.6	2.5
Manufacture of basic pharmaceutical products and pharmaceutical preparations	C21	7.7	-14.2	5.2	9.1	-8.7	30.7
Manufacture of rubber and plastic products	C22	0.3	-12.8	-4.5	-4.7	-11.2	-6.2
Manufacture of other non-metallic mineral products	C23	7.4	7.4	8.8	6.3	-1.9	9.0
Manufacture of basic metals	C24	20.8	26.0	26.0	10.7	-5.3	8.6
Manufacture of fabricated metal products, except machinery and equipment	C25	6.3	44.4	29.9	43.7	60.0	28.2
Manufacture of computer, electronic and optical products	C26	50.2	23.4	50.6	13.2	-15.9	14.8
Manufacture of electrical equipment	C27	12.6	8.9	9.8	13.2	15.0	19.6
Manufacture of machinery and equipment n.e.c.	C28	18.2	14.9	11.2	10.9	0.8	-3.2
Manufacture of motor vehicles, trailers and semi-trailers	C29	14.7	8.2	38.6	51.1	34.5	22.2
Manufacture of other transport equipment	C30	39.5	64.9	35.7	70.0	56.2	27.8
Manufacture of furniture	C31	1.2	-6.0	-2.0	-2.7	-8.0	-3.1
Other manufacturing	C32	42.9	33.5	21.4	56.0	17.8	15.9
Repair and installation of machinery and equipment	C33	20.1	23.5	6.3	1.5	20.1	-6.5
<b>Electricity, gas, steam and air conditioning supply</b>	<b>D</b>	<b>52.0</b>	<b>51.1</b>	<b>1.6</b>	<b>-31.7</b>	<b>-5.6</b>	<b>-28.6</b>
Electricity, gas, steam and air conditioning supply	D35	52.0	51.1	1.6	-31.7	-5.6	-28.6

<sup>1</sup> Calendar-adjusted.

\* Preliminary data.

„..“ - Confidential data.



Table 3

**Industrial Production Indices**  
(Seasonally adjusted, 2015 = 100)

NACE.BG - 2008	2021	2022											
	XII	I	II	III	IV	V	VI	VII	VIII	IX	X	XI	XII*
<b>B_TO_E36</b>	<b>117.3</b>	<b>119.9</b>	<b>120.3</b>	<b>126.6</b>	<b>126.6</b>	<b>128.4</b>	<b>127.5</b>	<b>128.9</b>	<b>129.2</b>	<b>125.8</b>	<b>122.6</b>	<b>123.5</b>	<b>122.5</b>
<b>B</b>	<b>123.3</b>	<b>135.6</b>	<b>129.2</b>	<b>141.6</b>	<b>118.6</b>	<b>134.0</b>	<b>120.7</b>	<b>128.0</b>	<b>117.6</b>	<b>120.3</b>	<b>112.2</b>	<b>114.1</b>	<b>125.5</b>
<b>B05</b>	112.5	130.0	132.6	149.6	120.0	130.2	114.5	122.9	103.4	109.2	89.6	109.3	101.4
<b>B06</b>	..	..	..	..	..	..	..	..	..	..	..	..	..
<b>B07</b>	135.4	127.5	118.2	129.9	103.2	130.7	123.8	119.7	121.0	124.1	118.4	107.9	153.2
<b>B08</b>	146.4	158.5	153.5	161.9	153.1	147.8	147.0	146.6	148.5	154.2	149.4	148.3	138.4
<b>B09</b>	..	..	..	..	..	..	..	..	..	..	..	..	..
<b>C</b>	<b>121.0</b>	<b>125.0</b>	<b>125.4</b>	<b>128.3</b>	<b>133.7</b>	<b>135.8</b>	<b>132.8</b>	<b>130.8</b>	<b>132.6</b>	<b>134.6</b>	<b>134.9</b>	<b>132.5</b>	<b>136.0</b>
<b>C10</b>	115.9	122.8	123.5	128.2	128.9	131.2	121.9	118.4	129.6	117.8	118.0	111.4	121.9
<b>C11</b>	62.3	98.6	88.2	91.7	94.9	91.5	92.2	86.6	88.9	87.2	90.4	89.4	90.3
<b>C12</b>	26.9	36.3	31.3	35.8	40.1	41.5	46.4	38.8	45.3	39.5	41.8	27.3	29.6
<b>C13</b>	129.7	122.0	117.0	117.5	117.5	110.4	112.5	109.2	116.4	109.3	100.9	105.6	105.4
<b>C14</b>	77.4	79.5	78.3	84.2	88.3	87.1	82.9	80.3	77.7	83.2	84.3	79.8	80.2
<b>C15</b>	75.0	78.2	76.6	73.0	75.4	69.9	68.4	66.4	65.1	68.5	67.7	65.7	66.6
<b>C16</b>	88.5	95.4	96.6	108.5	107.0	107.3	90.3	94.1	86.4	84.9	88.1	91.4	83.3
<b>C17</b>	108.3	104.8	104.1	108.8	108.1	112.7	110.3	111.2	106.2	100.8	112.8	111.5	103.4
<b>C18</b>	120.3	121.2	112.2	118.2	120.7	120.6	110.8	113.6	110.7	110.0	112.5	105.7	106.7
<b>C19</b>	..	..	..	..	..	..	..	..	..	..	..	..	..
<b>C20</b>	140.9	154.8	147.9	145.1	134.8	136.6	124.1	119.7	112.4	115.7	110.6	132.9	142.7
<b>C21</b>	124.7	123.9	115.3	115.3	127.5	124.9	139.2	127.4	115.9	125.0	132.8	120.5	151.3
<b>C22</b>	146.2	154.2	149.2	149.3	149.5	149.4	144.6	141.9	135.2	137.0	135.5	127.7	136.1
<b>C23</b>	117.1	132.7	134.2	131.2	132.5	135.7	128.7	127.8	133.0	133.0	129.7	125.8	128.2
<b>C24</b>	111.4	114.3	116.8	117.1	116.0	126.4	121.3	115.7	120.9	121.0	117.1	105.1	120.0
<b>C25</b>	117.2	127.7	119.5	126.2	186.3	160.8	154.1	143.1	156.6	158.8	166.3	183.8	153.0
<b>C26</b>	205.4	254.7	239.4	250.8	287.1	296.9	288.5	312.9	282.0	345.8	308.2	237.3	246.4
<b>C27</b>	150.9	153.7	154.9	157.7	164.9	167.3	166.0	165.2	163.4	168.2	166.7	170.8	179.2
<b>C28</b>	121.7	129.1	128.8	132.0	132.5	136.6	131.7	136.8	135.7	130.5	132.9	124.0	120.5
<b>C29</b>	153.7	135.6	148.2	153.0	134.7	142.2	156.5	139.3	155.0	159.4	157.9	165.4	183.3
<b>C30</b>	257.3	206.9	240.8	210.3	229.5	256.1	286.9	325.1	295.6	322.1	362.8	338.2	330.9
<b>C31</b>	103.7	118.4	116.7	116.0	110.5	116.0	111.3	108.4	99.3	106.7	106.6	100.9	101.7
<b>C32</b>	201.3	179.4	185.4	213.6	217.0	226.0	250.4	203.3	202.6	208.5	208.7	211.0	233.9
<b>C33</b>	117.3	112.5	117.2	131.0	117.0	148.7	117.6	121.9	133.1	129.0	117.5	113.9	111.0
<b>D</b>	<b>98.7</b>	<b>94.6</b>	<b>96.5</b>	<b>119.9</b>	<b>96.0</b>	<b>94.7</b>	<b>110.6</b>	<b>125.8</b>	<b>117.8</b>	<b>103.6</b>	<b>75.2</b>	<b>101.9</b>	<b>74.6</b>
<b>35</b>	98.7	94.6	96.5	119.9	96.0	94.7	110.6	125.8	117.8	103.6	75.2	101.9	74.6

\* Preliminary data.

„..“ - Confidential data.



Table 4

**Industrial Production Indices**  
(Calendar adjusted, 2015 = 100)

NACE.BG - 2008	2019	2020	2021	2022											
	XII	XII	XII	I	II	III	IV	V	VI	VII	VIII	IX	X	XI	XII*
<b>B_TO_E36</b>	<b>107.6</b>	<b>104.3</b>	<b>119.7</b>	<b>116.1</b>	<b>114.6</b>	<b>133.1</b>	<b>123.6</b>	<b>123.4</b>	<b>129.6</b>	<b>132.4</b>	<b>124.2</b>	<b>125.2</b>	<b>125.6</b>	<b>128.8</b>	<b>122.2</b>
<b>B</b>	<b>118.2</b>	<b>108.7</b>	<b>133.6</b>	<b>132.6</b>	<b>123.8</b>	<b>137.9</b>	<b>109.0</b>	<b>125.7</b>	<b>116.5</b>	<b>124.1</b>	<b>115.0</b>	<b>126.3</b>	<b>124.2</b>	<b>121.3</b>	<b>135.9</b>
<b>B05</b>	93.6	73.2	129.1	144.1	135.0	144.4	101.2	113.5	94.7	114.7	98.7	114.8	109.4	123.2	117.2
<b>B06</b>	..	..	..	..	..	..	..	..	..	..	..	..	..	..	..
<b>B07</b>	143.5	128.2	135.4	127.5	118.2	129.9	103.2	130.7	123.8	119.7	121.0	124.1	118.4	107.9	153.2
<b>B08</b>	97.8	146.6	148.5	110.8	120.4	154.3	149.8	150.8	157.7	155.7	156.0	167.9	167.1	166.2	137.5
<b>B09</b>	..	..	..	..	..	..	..	..	..	..	..	..	..	..	..
<b>C</b>	<b>109.7</b>	<b>107.0</b>	<b>117.1</b>	<b>115.1</b>	<b>117.4</b>	<b>133.8</b>	<b>135.3</b>	<b>137.1</b>	<b>140.8</b>	<b>135.9</b>	<b>125.0</b>	<b>134.8</b>	<b>141.5</b>	<b>136.5</b>	<b>129.8</b>
<b>C10</b>	114.6	108.1	120.0	109.9	109.1	129.0	122.7	130.5	125.0	118.2	131.3	122.5	128.5	115.7	126.1
<b>C11</b>	95.2	75.2	62.3	63.2	59.9	80.9	87.5	94.6	111.6	109.1	115.5	99.6	88.7	85.2	90.2
<b>C12</b>	43.0	40.7	26.9	20.6	18.9	35.7	45.7	50.4	61.8	49.8	43.5	41.3	47.1	26.6	26.1
<b>C13</b>	85.1	90.2	115.6	112.1	117.7	127.0	118.7	117.9	122.7	109.4	94.6	106.6	106.4	108.6	94.5
<b>C14</b>	76.2	63.6	74.3	86.5	78.6	86.0	81.8	81.3	86.9	91.8	74.0	80.7	85.4	79.3	76.0
<b>C15</b>	76.3	60.4	69.9	84.0	77.5	73.2	70.3	63.7	71.9	76.0	52.1	66.9	72.0	68.0	62.3
<b>C16</b>	79.3	74.6	84.2	81.0	84.5	107.6	107.1	112.1	94.6	100.9	84.6	87.8	93.4	96.9	77.7
<b>C17</b>	92.0	87.9	105.1	103.7	101.2	112.6	106.0	112.9	112.3	114.2	104.9	98.7	116.8	113.4	98.7
<b>C18</b>	110.1	104.2	122.2	108.3	102.6	118.7	119.1	121.3	111.8	113.9	104.7	105.3	121.3	119.4	108.0
<b>C19</b>	..	..	..	..	..	..	..	..	..	..	..	..	..	..	..
<b>C20</b>	114.3	109.5	138.1	145.5	141.1	158.7	133.6	135.4	127.7	122.5	107.1	113.1	110.8	135.8	141.6
<b>C21</b>	108.5	128.0	130.1	121.4	101.5	127.1	128.2	121.8	147.9	128.4	104.1	118.2	136.0	125.9	170.1
<b>C22</b>	120.3	131.3	128.6	142.6	143.4	156.4	144.9	146.4	149.3	148.6	128.6	138.3	148.2	128.3	120.6
<b>C23</b>	110.3	95.8	103.1	95.1	109.3	128.2	136.0	146.7	138.7	138.3	140.5	142.8	144.7	136.2	112.4
<b>C24</b>	100.0	114.2	107.2	120.6	117.3	127.5	120.2	125.2	118.8	115.5	109.3	108.9	120.4	106.6	116.3
<b>C25</b>	110.3	128.0	128.0	97.2	109.1	126.7	188.0	156.9	164.9	152.9	152.6	163.2	172.2	203.4	164.0
<b>C26</b>	188.8	178.7	207.7	245.8	225.1	260.3	283.0	290.1	298.2	320.9	243.2	341.4	352.5	252.8	238.5
<b>C27</b>	106.6	125.7	133.6	146.2	152.2	165.8	164.9	161.7	175.1	169.8	146.2	174.4	178.5	183.2	159.8
<b>C28</b>	102.0	104.7	115.9	119.6	124.0	139.0	136.8	133.7	140.3	143.3	118.6	128.7	142.0	131.0	112.2
<b>C29</b>	112.7	153.5	138.6	136.0	151.9	165.9	133.7	135.0	166.1	132.1	136.1	159.2	164.9	180.8	169.4
<b>C30</b>	153.3	132.0	217.6	185.8	259.8	237.6	249.2	258.7	325.8	348.7	239.7	304.9	383.6	360.6	278.1
<b>C31</b>	99.2	101.8	100.5	106.8	107.9	118.5	103.9	112.8	116.0	114.2	93.6	109.2	116.8	107.3	97.4
<b>C32</b>	163.3	86.3	182.8	159.9	166.9	217.5	211.6	218.5	285.6	203.9	199.6	220.4	222.3	227.2	211.9
<b>C33</b>	146.1	119.0	156.3	81.0	100.7	134.1	104.6	140.9	120.6	124.5	129.4	135.4	122.1	126.0	146.2
<b>D</b>	<b>95.1</b>	<b>91.5</b>	<b>125.2</b>	<b>117.3</b>	<b>100.9</b>	<b>133.7</b>	<b>85.9</b>	<b>71.6</b>	<b>93.1</b>	<b>124.4</b>	<b>124.4</b>	<b>88.0</b>	<b>68.0</b>	<b>105.2</b>	<b>89.4</b>
<b>D35</b>	95.1	91.5	125.2	117.3	100.9	133.7	85.9	71.6	93.1	124.4	124.4	88.0	68.0	105.2	89.4

\* Preliminary data.

„..“ - Confidential data.