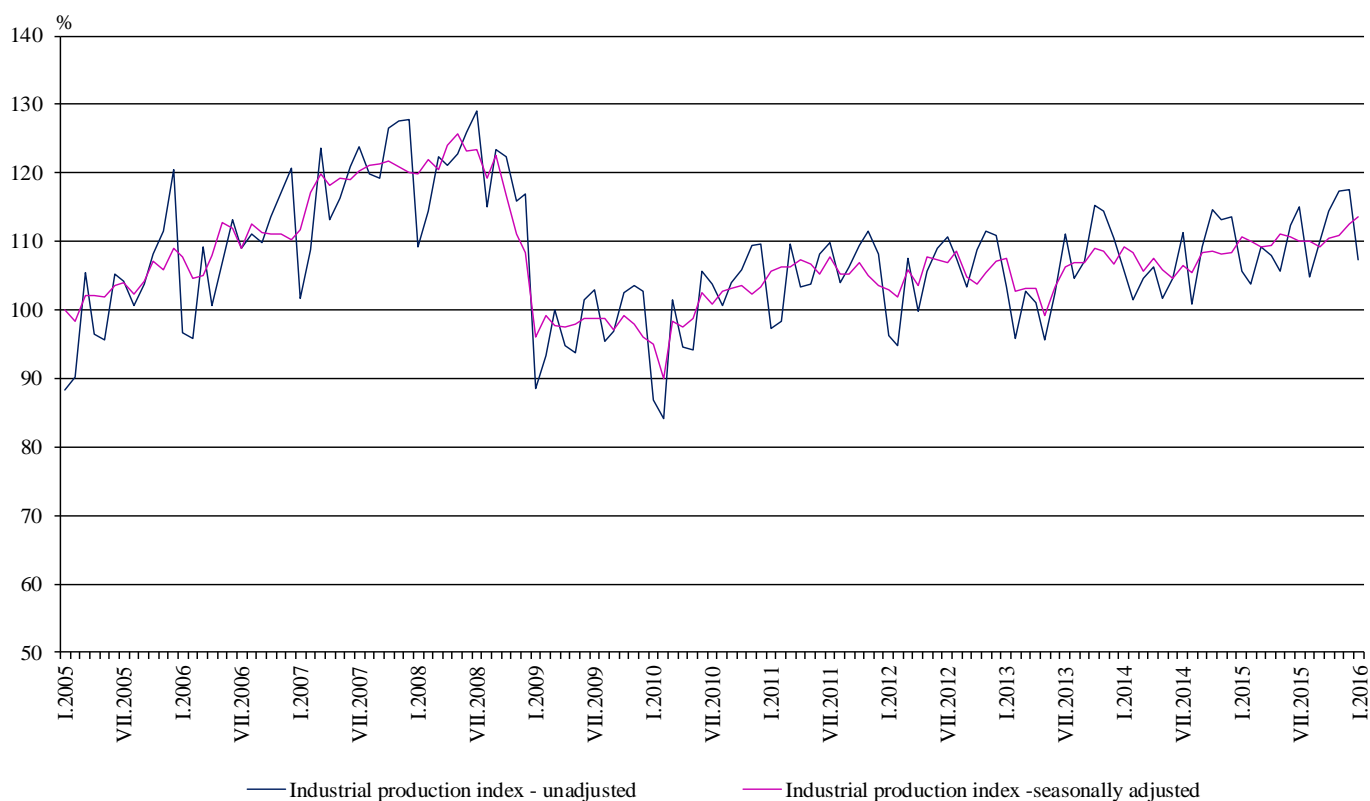


INDUSTRIAL PRODUCTION INDICES IN JANUARY 2016¹

According to the preliminary data the Industrial Production Index², seasonally adjusted³, increased by 0.8% in January 2016 as compared to December 2015.

In January 2016 working day adjusted⁴ Industrial Production Index rose by 3.0% in comparison with the same month of 2015.

Figure 1. Industrial Production Indices (2010 = 100)



¹ January 2016 data are preliminary.

² Monthly Industrial Production and Industrial turnover indices measure changes in production and turnover values of industrial enterprises. This information can be used to assess the current economic development and for short-term forecasts. Indices do not measure the actual production level, it aims to measure the average change in value of production between two points of time. Indices are compiled on the base of information collected through representative sampling survey on industrial enterprises. The sample covers enterprises with annual turnover more than 97% of total turnover in industry.

Industrial production indices are calculated at constant base year that is to say they are weighted with the structure of the value added at factor costs in the base year.

³ Seasonal adjustment is a statistical method, which eliminates the seasonal component of time series.

⁴ Working day adjustment is an adjustment for variations caused by calendar effects, different number of calendar and working days in the months, national holidays and outliers (for example the presence of more non-working days in May could contribute to the decline in the production in some activities).



Monthly comparisons

In January 2016 as compared to December 2015, the seasonally adjusted Industrial Production Index increased in the electricity, gas, steam and air conditioning supply by 4.1% and in the mining and quarrying industry by 2.7%, while in the manufacturing a decrease by 0.3% was seen.

The most significant decreases of production in the manufacturing were registered in the manufacture of wood and of products of wood and cork, except furniture; manufacture of articles of straw and plaiting materials by 7.1%, in the manufacture of other transport equipment by 5.6%, in the manufacture of paper and paper products by 4.6%, in the manufacture of other non-metallic mineral products by 3.9%. There were increases in the manufacture of fabricated metal products, except machinery and equipment by 22.2%, in the manufacture of computer, electronic and optical products by 19.2%, in the printing and reproduction of recorded media by 11.6%, in the manufacture of beverages by 9.9%.

**Figure 2. Changes of Industrial Production Indices compared to the previous month
(Seasonally adjusted)**



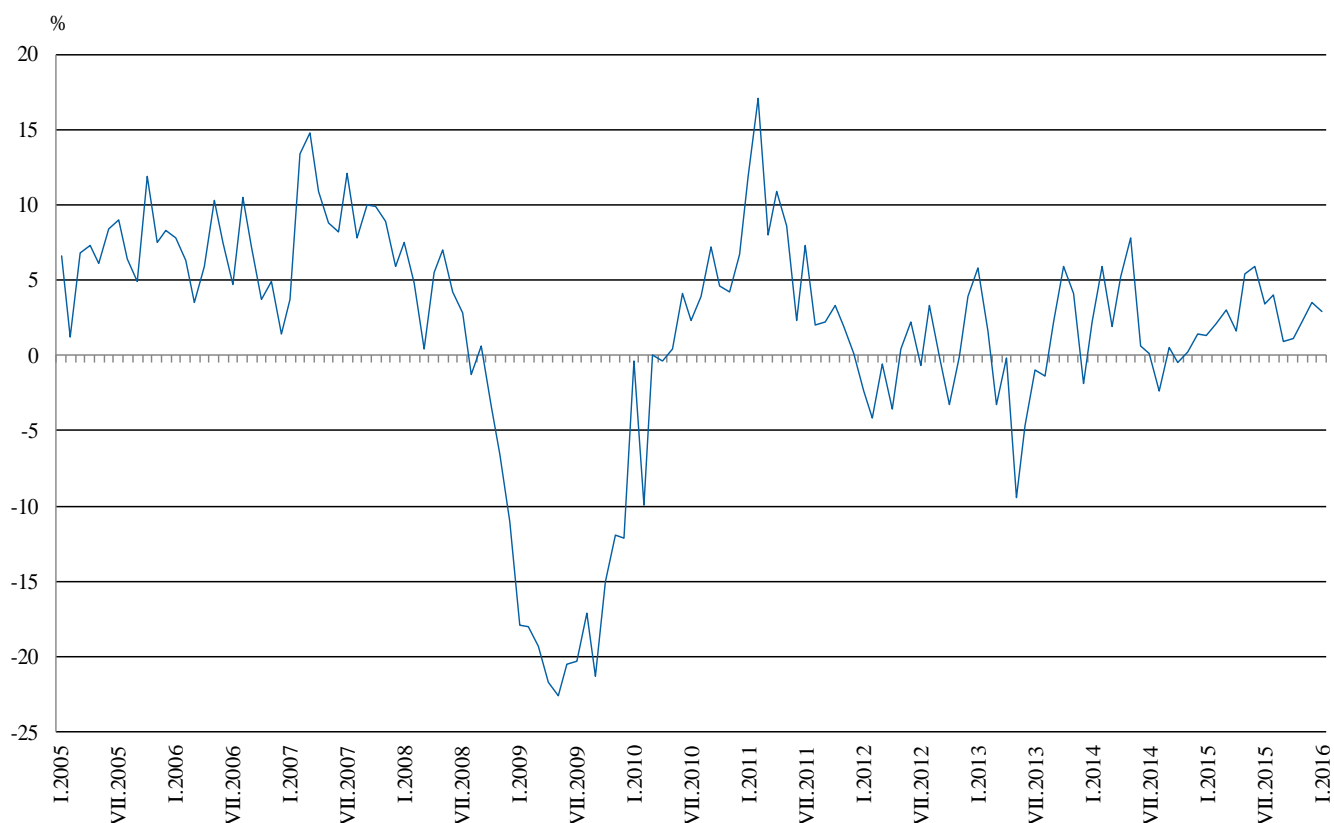


Annual comparisons

On annual basis in January 2016 Industrial Production Index calculated from working day adjusted data increased in the mining and quarrying industry by 8.4% and in the manufacturing by 5.2%, while in the electricity, gas, steam and air conditioning supply a decrease by 4.8% was registered.

In the manufacturing, the more significant increases compared to the same month of the previous year were seen in the manufacture of fabricated metal products, except machinery and equipment by 49.3%, in the manufacture of computer, electronic and optical products by 25.4%, in the printing and reproduction of recorded media by 18.6%, in the manufacture of beverages by 10.0%. Decreases were registered in the manufacture of other transport equipment by 22.8%, in the manufacture of basic metals by 17.4%, in the manufacture of leather and related products by 8.7%, in the manufacture of chemicals and chemical products by 6.7%.

Figure 3. Changes of Industrial Production Indices compared to the same month of the previous year (Working day adjusted)



The final data on Industrial Production and Turnover Indices for December 2015 can be found on the NSI website: <http://www.nsi.bg/en>.



Annex

Table 1
Changes of Industrial Production Indices compared to the previous month^{1,2}

Economic Activities	NACE.BG - 2008	2015					(Per cent)
		VIII	IX	X	XI	XII	I
Industry	B_TO_E36	0.0	-0.8	1.1	0.5	1.5	0.8
Mining and quarrying	B	-0.5	1.8	-3.2	3.1	0.2	2.7
Mining of coal and lignite	B05	6.4	1.2	-23.6	11.0	10.6	-3.3
Extraction of crude petroleum and natural gas	B06	-3.5	28.3	-2.9	204.9	6.0	-7.9
Mining of metal ores	B07	-9.5	10.4	0.3	10.2	-10.5	12.2
Other mining and quarrying	B08	-7.7	1.6	6.6	-8.7	19.0	-23.5
Manufacturing	C	-0.5	-0.1	2.2	0.7	1.4	-0.3
Manufacture of food products	C10	1.8	0.5	3.0	-1.3	-0.7	3.8
Manufacture of beverages	C11	0.5	-2.8	1.4	0.8	-2.7	9.9
Manufacture of tobacco products	C12	0.0	-8.0	13.0	8.8	6.4	3.4
Manufacture of textiles	C13	-3.3	1.7	7.0	-5.1	-1.6	1.8
Manufacture of wearing apparel	C14	-4.5	4.6	6.6	-5.3	3.3	-0.3
Manufacture of leather and related products	C15	-3.2	0.8	-6.3	-3.8	4.2	-0.2
Manufacture of wood and of products of wood and cork, except furniture; manufacture of articles of straw and plaiting materials	C16	5.3	0.0	-0.1	7.0	0.1	-7.1
Manufacture of paper and paper products	C17	0.9	11.0	2.9	-0.9	-8.8	-4.6
Printing and reproduction of recorded media	C18	-0.5	-0.4	3.6	14.9	-12.2	11.6
Manufacture of coke and refined petroleum products	C19	-4.8	2.1	5.7	7.3	-7.4	5.0
Manufacture of chemicals and chemical products	C20	0.6	-10.0	2.7	-12.2	-2.5	6.6
Manufacture of basic pharmaceutical products and pharmaceutical preparations	C21	-2.8	1.8	2.0	1.3	0.7	-0.3
Manufacture of rubber and plastic products	C22	-2.8	2.8	2.9	-1.8	2.1	6.2
Manufacture of other non-metallic mineral products	C23	-1.3	0.6	0.1	3.3	4.0	-3.9
Manufacture of basic metals	C24	-2.0	-4.4	1.4	0.2	0.6	-1.7
Manufacture of fabricated metal products, except machinery and equipment	C25	0.8	0.2	4.9	9.8	-0.7	22.2
Manufacture of computer, electronic and optical products	C26	-1.0	-6.5	11.1	-5.6	-6.2	19.2
Manufacture of electrical equipment	C27	0.6	-3.0	3.1	0.3	-3.1	3.0
Manufacture of machinery and equipment n.e.c.	C28	-0.6	-1.7	0.6	-3.0	2.0	1.6
Manufacture of motor vehicles, trailers and semi-trailers	C29	-9.4	11.9	-1.2	-2.1	0.3	0.1
Manufacture of other transport equipment	C30	19.0	5.6	-2.6	0.3	-5.3	-5.6
Manufacture of furniture	C31	-5.4	11.5	-5.2	2.3	-1.6	4.0
Other manufacturing	C32	-1.8	-4.2	5.2	2.8	10.5	8.8
Repair and installation of machinery and equipment	C33	-7.6	-7.4	16.4	4.5	-15.0	9.3
Electricity, gas, steam and air conditioning supply	D	1.4	-3.7	-0.7	-1.5	2.6	4.1
Electricity, gas, steam and air conditioning supply	D35	1.4	-3.7	-0.7	-1.5	2.6	4.1

¹ Seasonally adjusted.

² ".." - Confidential data.



Table 2

Changes of Industrial Production Indices compared to the same month of the previous year^{1,2}
(Per cent)

Economic Activities	NACE.BG - 2008	2015					2016
		VIII	IX	X	XI	XII	I
Industry	B_TO_E36	4.0	0.9	1.2	2.2	3.5	3.0
Mining and quarrying	B	-0.2	9.2	-10.1	1.7	-0.9	8.4
Mining of coal and lignite	B05	28.1	26.0	-11.8	0.9	11.2	-3.2
Extraction of crude petroleum and natural gas	B06	5.9	29.7	41.8	296.1	152.1	167.7
Mining of metal ores	B07	-14.3	0.2	-10.9	-2.9	-15.4	16.3
Other mining and quarrying	B08	-2.1	-2.2	3.0	-6.1	16.4	-11.5
Manufacturing	C	3.9	0.7	4.5	5.7	7.2	5.2
Manufacture of food products	C10	-2.9	-1.9	0.6	-3.0	-1.5	-1.4
Manufacture of beverages	C11	4.2	4.4	11.1	9.7	0.2	10.0
Manufacture of tobacco products	C12	-12.6	-28.3	-20.7	-6.7	-8.1	9.4
Manufacture of textiles	C13	-3.0	-3.1	5.9	4.6	-3.2	-0.5
Manufacture of wearing apparel	C14	-9.3	-0.2	10.0	4.6	10.1	7.3
Manufacture of leather and related products	C15	-1.3	1.9	-10.4	-21.9	-13.9	-8.7
Manufacture of wood and of products of wood and cork, except furniture; manufacture of articles of straw and plaiting materials	C16	-2.8	5.2	-3.3	11.0	13.9	-5.6
Manufacture of paper and paper products	C17	1.2	10.7	15.7	16.2	8.0	-2.8
Printing and reproduction of recorded media	C18	14.5	5.0	8.4	23.9	9.7	18.6
Manufacture of coke and refined petroleum products	C19	-11.4	-14.3	-5.7	11.1	30.3	3.3
Manufacture of chemicals and chemical products	C20	18.1	0.0	-10.7	-7.9	-8.7	-6.7
Manufacture of basic pharmaceutical products and pharmaceutical preparations	C21	17.4	7.9	4.4	9.5	0.9	0.9
Manufacture of rubber and plastic products	C22	0.9	2.1	4.2	6.2	12.0	8.0
Manufacture of other non-metallic mineral products	C23	9.9	15.7	12.2	14.5	23.6	9.7
Manufacture of basic metals	C24	-8.8	-18.2	-10.1	-0.5	-10.7	-17.4
Manufacture of fabricated metal products, except machinery and equipment	C25	13.6	-2.4	15.6	23.9	23.3	49.3
Manufacture of computer, electronic and optical products	C26	17.8	1.9	9.2	9.7	4.4	25.4
Manufacture of electrical equipment	C27	23.8	11.7	11.9	13.5	10.9	5.6
Manufacture of machinery and equipment n.e.c.	C28	2.1	-6.6	-1.8	-13.8	2.2	-7.0
Manufacture of motor vehicles, trailers and semi-trailers	C29	13.2	13.5	4.6	8.7	3.5	2.5
Manufacture of other transport equipment	C30	63.3	53.9	29.7	29.6	21.4	-22.8
Manufacture of furniture	C31	-11.1	8.5	0.9	4.2	9.4	6.1
Other manufacturing	C32	19.0	12.3	27.3	27.2	43.8	31.2
Repair and installation of machinery and equipment	C33	-3.9	-17.7	8.4	-5.5	5.8	-5.4
Electricity, gas, steam and air conditioning supply	D	6.2	-2.5	-6.1	-7.2	-4.0	-4.8
Electricity, gas, steam and air conditioning supply	D35	6.2	-2.5	-6.1	-7.2	-4.0	-4.8

¹ Working day adjusted.

² "..." - Confidential data.



Table 3

Industrial Production Indices¹
(Seasonally adjusted, 2010 = 100)

NACE.BG - 2008	2015												2016
	I	II	III	IV	V	VI	VII	VIII	IX	X	XI	XII	I
B_TO_E36	110.7	110.0	109.1	109.5	111.0	110.6	110.1	110.1	109.2	110.4	110.9	112.5	113.5
B	97.7	99.1	97.6	98.2	99.1	99.8	99.1	98.6	100.3	97.1	100.1	100.3	103.0
B05	117.3	115.9	104.2	119.7	107.9	106.8	115.5	123.0	124.4	95.1	105.6	116.8	113.0
B06	88.4	82.0	72.9	69.3	63.0	65.0	66.2	63.9	82.0	79.6	242.6	257.2	236.8
B07	84.0	85.3	86.3	84.3	94.7	99.8	88.3	79.8	88.2	88.4	97.4	87.1	97.8
B08	111.3	107.9	108.4	110.4	112.1	119.9	119.1	109.9	111.7	119.1	108.8	129.4	99.0
C	112.7	113.3	112.2	111.7	114.8	114.5	114.3	113.8	113.6	116.2	117.0	118.6	118.3
C10	93.8	95.3	86.8	90.9	92.1	89.4	86.1	87.7	88.1	90.8	89.6	89.0	92.4
C11	98.2	102.7	96.3	100.9	101.2	100.3	100.5	101.0	98.3	99.6	100.4	97.7	107.3
C12	104.5	108.5	110.1	103.3	96.4	93.3	89.2	89.2	82.1	92.7	100.9	107.4	111.0
C13	111.4	101.2	99.3	102.8	110.1	108.5	110.5	106.9	108.8	116.4	110.5	108.7	110.7
C14	93.9	92.1	89.2	91.3	93.4	98.2	96.7	92.4	96.6	103.0	97.5	100.7	100.4
C15	80.6	78.5	75.7	81.7	71.6	74.2	80.4	77.8	78.4	73.5	70.7	73.7	73.6
C16	100.6	105.8	104.8	102.0	96.6	97.6	91.8	96.7	96.7	96.6	103.4	103.6	96.2
C17	120.6	117.5	125.5	114.6	122.3	126.0	118.2	119.3	132.5	136.2	135.0	123.1	117.4
C18	110.1	114.3	113.5	108.7	110.7	116.3	112.5	111.9	111.5	115.6	132.7	116.5	130.1
C19	98.6	92.4	101.4	105.9	102.5	100.9	94.4	89.8	91.7	96.9	103.9	96.2	101.1
C20	112.3	102.6	99.6	106.1	102.3	112.9	123.5	124.2	111.9	114.9	100.8	98.3	104.7
C21	150.0	135.3	152.6	151.6	147.7	143.1	147.1	143.0	145.6	148.5	150.5	151.5	151.0
C22	133.5	133.3	127.3	132.6	136.3	132.8	131.2	127.6	131.1	134.9	132.5	135.2	143.6
C23	118.4	117.7	121.8	121.9	129.5	128.8	129.3	127.6	128.4	128.5	132.8	138.2	132.8
C24	104.9	103.8	100.2	103.0	100.4	99.2	97.2	95.3	91.1	92.3	92.5	93.1	91.5
C25	122.0	128.0	115.1	113.0	128.6	120.4	127.8	128.8	129.1	135.4	148.7	147.6	180.5
C26	130.4	149.6	142.8	146.8	148.7	151.8	150.3	148.8	139.1	154.6	145.9	136.8	163.1
C27	139.8	140.3	144.6	140.5	151.3	135.8	146.4	147.4	143.0	147.4	147.8	143.3	147.6
C28	151.3	147.1	138.9	142.2	146.3	145.0	142.4	141.5	139.0	139.8	135.6	138.2	140.5
C29	153.9	158.4	155.5	154.3	149.9	156.8	160.5	145.4	162.7	160.8	157.4	157.8	157.9
C30	120.6	89.8	93.3	83.8	95.4	82.6	85.0	101.1	106.7	104.0	104.3	98.8	93.3
C31	124.6	129.1	118.2	130.9	126.2	121.2	126.1	119.3	133.0	126.1	129.0	126.9	132.0
C32	171.7	151.6	157.5	161.8	168.6	174.3	183.4	180.1	172.6	181.6	186.8	206.5	224.6
C33	95.6	88.5	96.8	83.7	93.8	91.8	93.3	86.3	79.9	93.1	97.3	82.7	90.4
D	112.6	106.8	107.0	109.9	107.2	105.8	104.2	105.7	101.8	101.0	99.5	102.0	106.2
D35	112.6	106.8	107.0	109.9	107.2	105.8	104.2	105.7	101.8	101.0	99.5	102.0	106.2

¹ "..." - Confidential data.



Table 4

Industrial Production Indices¹
(Working day adjusted, 2010 = 100)

NACE.BG - 2008	2013	2014	2015												2016
	I	I	I	II	III	IV	V	VI	VII	VIII	IX	X	XI	XII	I
B_TO_E36	102.2	104.5	105.8	103.7	109.5	107.1	107.4	111.5	113.7	106.5	109.2	114.6	118.0	116.1	108.9
B	95.3	110.1	97.7	93.5	89.3	92.5	94.0	97.0	98.0	94.9	105.2	101.3	108.2	109.8	106.0
B05	109.3	130.5	132.2	114.1	94.2	104.3	90.3	83.4	106.6	121.9	132.9	117.6	118.0	136.8	127.9
B06	98.7	92.7	88.4	82.0	72.9	69.3	63.0	65.0	66.2	63.9	82.0	79.6	242.6	257.2	236.8
B07	90.6	104.2	84.0	85.3	86.3	84.3	94.7	99.8	88.3	79.8	88.2	88.4	97.4	87.1	97.8
B08	63.0	67.0	68.0	75.5	96.5	109.9	118.0	132.1	135.8	121.4	123.9	142.1	121.2	135.1	60.2
C	92.6	93.9	98.6	101.5	111.2	112.6	116.0	120.9	122.6	110.9	116.3	123.6	123.8	114.7	103.7
C10	77.2	74.9	79.0	83.0	85.4	87.8	89.4	91.4	87.1	90.0	95.0	100.3	96.5	92.9	77.9
C11	69.5	57.8	62.9	70.7	90.7	102.3	114.2	123.4	124.3	127.6	105.9	86.0	89.1	100.3	69.1
C12	90.8	87.9	77.6	85.4	114.6	104.3	104.7	106.1	107.0	89.0	88.9	90.9	97.3	109.3	85.0
C13	88.6	92.3	96.0	95.8	109.9	112.7	124.1	120.6	117.2	86.0	105.3	119.7	113.8	94.4	95.5
C14	100.4	104.5	97.4	90.0	83.5	85.5	86.4	105.2	110.2	92.6	92.8	103.8	98.2	100.5	104.6
C15	80.0	79.8	81.9	76.0	73.3	70.5	59.3	76.2	98.4	79.9	86.5	76.8	71.5	68.4	74.8
C16	79.1	88.5	79.3	89.0	102.2	100.0	96.4	106.0	101.5	98.6	103.9	107.8	112.5	99.0	74.9
C17	100.4	116.3	112.8	109.8	128.8	116.3	124.3	131.5	123.7	118.6	134.6	137.9	134.6	118.0	109.6
C18	79.2	92.6	95.2	102.7	110.9	105.8	108.5	119.7	111.3	107.2	113.5	123.1	149.2	129.6	112.9
C19	111.3	92.6	89.5	59.8	106.9	115.5	115.3	110.3	103.3	98.2	93.7	102.1	102.2	77.3	92.4
C20	96.4	85.9	104.3	95.6	109.2	109.9	102.4	117.6	124.8	117.8	112.3	113.8	104.0	96.3	97.3
C21	108.7	123.2	135.6	134.3	158.3	159.3	146.9	148.8	139.7	127.1	145.7	160.1	155.1	155.2	136.9
C22	92.9	102.0	113.1	115.3	126.3	132.4	138.6	144.6	144.9	128.0	139.9	150.4	138.1	115.5	122.2
C23	83.0	78.6	83.0	92.8	118.8	125.6	143.5	140.5	141.1	135.2	140.5	141.7	143.0	123.3	91.1
C24	138.8	112.0	112.9	100.3	90.0	121.8	105.0	92.6	118.6	92.1	76.7	103.4	98.2	70.9	93.2
C25	81.2	85.2	94.0	113.7	113.4	108.4	124.7	125.2	133.6	125.0	132.9	144.1	165.6	165.9	140.3
C26	104.6	123.9	116.8	138.7	148.2	144.5	150.5	159.6	154.1	129.9	139.8	158.6	153.7	150.0	146.4
C27	112.0	116.3	129.1	133.0	148.0	142.3	148.6	141.7	155.5	129.9	144.5	162.7	162.6	130.2	136.3
C28	109.4	127.1	133.7	141.1	147.5	145.1	145.6	156.8	149.7	127.8	141.7	143.8	143.4	129.3	124.4
C29	90.8	133.7	149.3	152.5	163.7	159.5	149.2	166.8	162.2	119.6	167.0	174.6	173.3	139.8	153.1
C30	77.6	53.9	93.3	79.8	101.5	87.3	115.6	90.4	88.0	81.4	97.2	101.1	96.9	103.7	72.0
C31	103.6	104.4	106.3	114.0	114.3	126.3	123.6	124.8	129.9	121.3	141.2	139.5	141.6	127.3	112.7
C32	114.1	123.8	145.2	129.9	158.5	157.9	169.3	197.8	188.1	184.0	182.4	210.9	195.7	178.3	190.5
C33	58.7	58.5	68.5	76.0	96.5	74.7	86.3	92.6	92.4	85.3	81.6	99.4	114.3	111.3	64.8
D	139.0	139.1	134.5	117.6	117.0	100.6	88.2	91.1	95.5	96.3	90.0	95.5	108.2	128.7	128.1
D35	139.0	139.1	134.5	117.6	117.0	100.6	88.2	91.1	95.5	96.3	90.0	95.5	108.2	128.7	128.1

¹ "... - Confidential data.