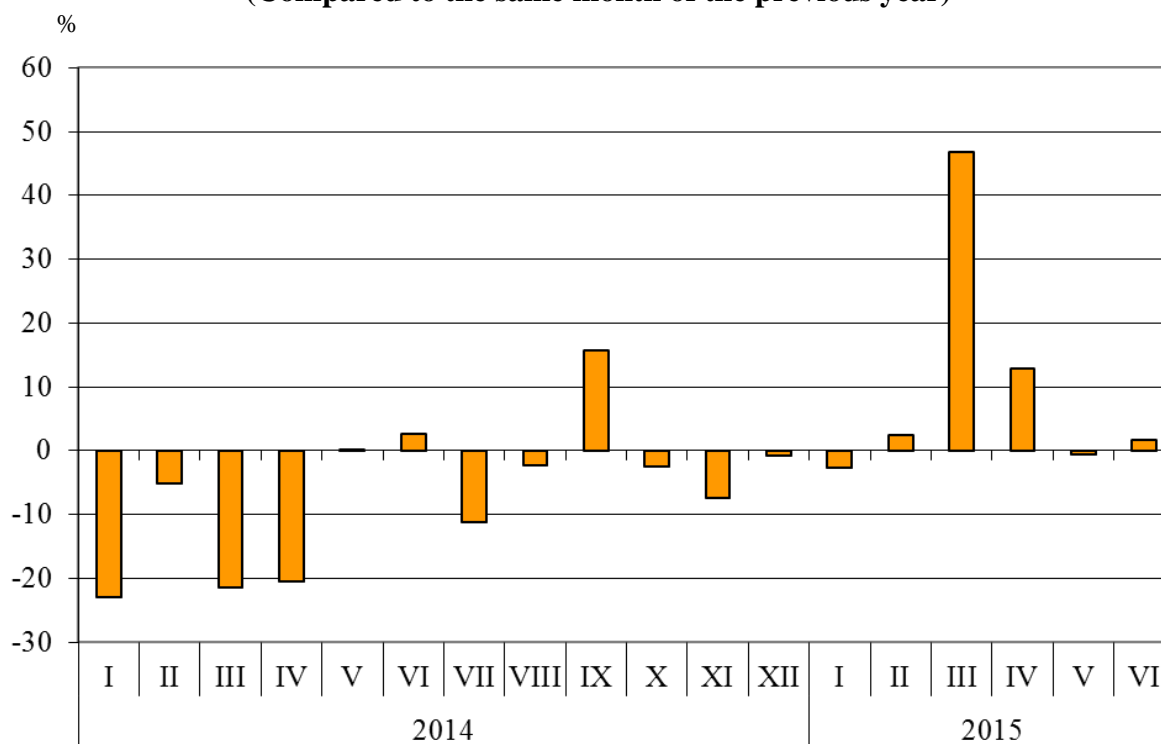


## BULGARIAN TRADE WITH THIRD COUNTRIES IN THE PERIOD JANUARY - JUNE 2015 (PRELIMINARY DATA)

In the **January - June 2015** period Bulgarian **exports to third countries** increased by 8.8% compared to the corresponding period of 2014 and amounted to 8.2 Billion BGN (Annex, Table 1 and 2). Main trade partners of Bulgaria were Turkey, China, Singapore, Serbia, USA, Russian Federation and Former Yugoslav Republic of Macedonia, which accounted for 55.4% of the exports to non EU countries (Annex, Table 3).

**In June 2015 exports to third countries** increased by 1.8% compared to the corresponding month of the previous year and amounted to 1.5 Billion BGN.

**Figure 1. Nominal value<sup>1</sup> change of exports of Bulgaria to non-EU countries  
in the period 2014 - 2015  
(Compared to the same month of the previous year)**

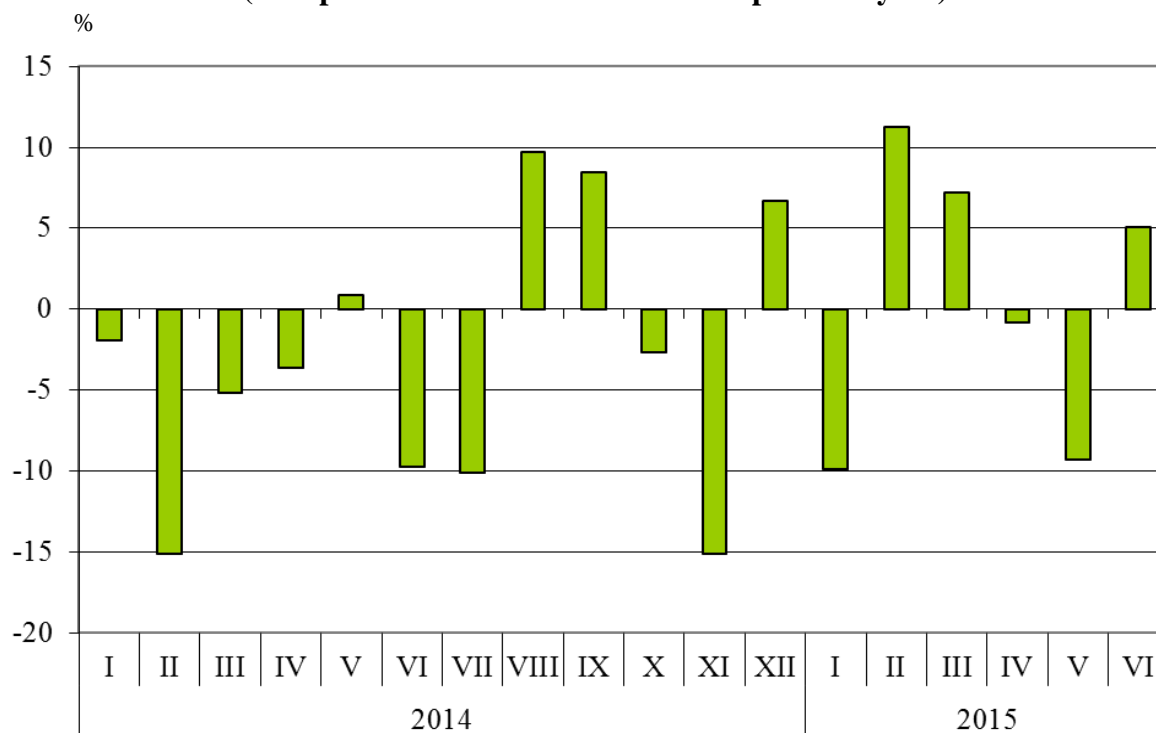


**Bulgarian imports from third countries in the first six months of 2015** decreased by 0.1% compared to the corresponding period of 2014 and added up to 9.4 Billion BGN (at CIF prices) (Annex, Tables 1 and 2). The largest amounts were reported for the goods imported from the Russian Federation, Turkey, China and Ukraine (Annex, Table 3).

**In June 2015** Bulgarian imports from third countries increased by 5.1% compared to the corresponding month of the previous year and amounted to 1.6 Billion BGN.

<sup>1</sup> Value changes at current prices.

**Figure 2. Nominal value<sup>1</sup> change of imports of Bulgaria to non EU countries  
in the period 2014 - 2015  
(Compared to the same month of the previous year)**



The foreign trade balance of Bulgaria (export FOB - import CIF) with third countries in the period January - June 2015 was negative and added up to 1 127.7 Million BGN (Annex, Table 1). The trade balance at FOB/FOB prices (after elimination of transport and insurance costs on imports) was also negative and amounted to 699.1 Million BGN.

In June 2015 the foreign trade balance of Bulgaria (export FOB - import CIF) with third countries was negative and amounted to 145.0 Million BGN.

In the first six months of 2015 compared to the corresponding period of 2014 in the exports of Bulgaria to third countries distributed according to the **Standard International Trade Classification** the largest growth were recorded in the section 'Animals and vegetable oils, fats and waxes' (230.4%) and 'Miscellaneous manufactured articles'<sup>2</sup> (43.7%) (Annex, Table 4). The most notable fall was reported in section 'Mineral fuel, lubricants and related materials' (9.7%).

In imports from third countries the largest growths were reported in sections 'Food and live animals' (34.3%) and 'Crude materials, inedible (except fuels)'<sup>3</sup> (18.6%) while the most notable fall was observed in section 'Beverages and tobacco' (20.6%).

<sup>1</sup> Value changes at current prices.

<sup>2</sup> The section includes the following divisions: leather, leather manufactures, n.e.s. and dressed furskins; rubber manufactures, n.e.s; cork and wood manufactures (excluding furniture); paper, paperboard and articles of paper pulp, of paper or of paperboard; textile yarn, fabrics, made-up articles, n.e.s., and related products; non-metallic mineral manufactures, n.e.s.; iron and steel; non-ferrous metals; manufactures of metals, n.e.s.

<sup>3</sup> The section includes following divisions: raw hides, skins and furskins; oil-seeds and oleaginous fruits; crude rubber; cork and wood; pulp and waste paper; textile fibres and their wastes; crude fertilizers and crude minerals; metalliferous ores and metal scrap; crude animal and vegetable materials, n.e.s

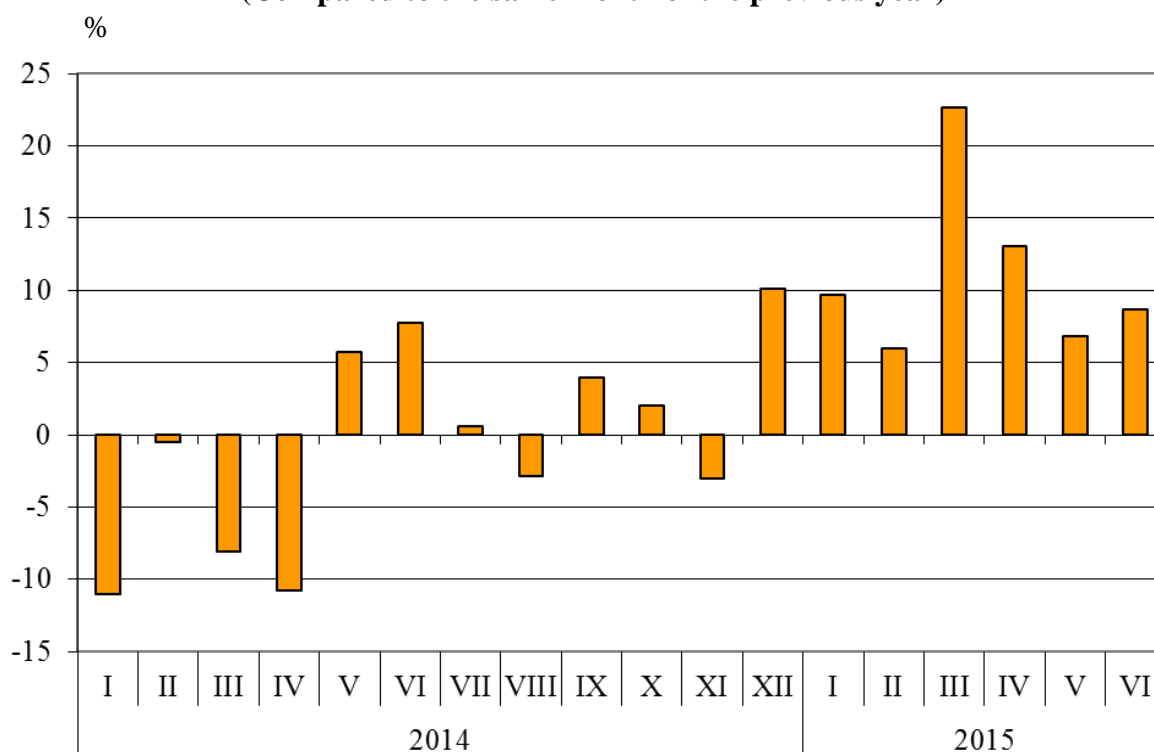


## Bulgarian trade with third countries and EU - total

In the period **January - June 2015** the value of **all exported goods** from Bulgaria amounted to 22.4 Billion BGN and compared to the corresponding period of 2014 the exports increased by 11.0% (Annex, Table 1 and 2).

In June 2015 the total exports added up to 4.0 Billion BGN and increased by 8.7% compared to the corresponding month of the previous year.

**Figure 3. Nominal value<sup>1</sup> change of exports of Bulgaria in the period 2014 - 2015**  
(Compared to the same month of the previous year)

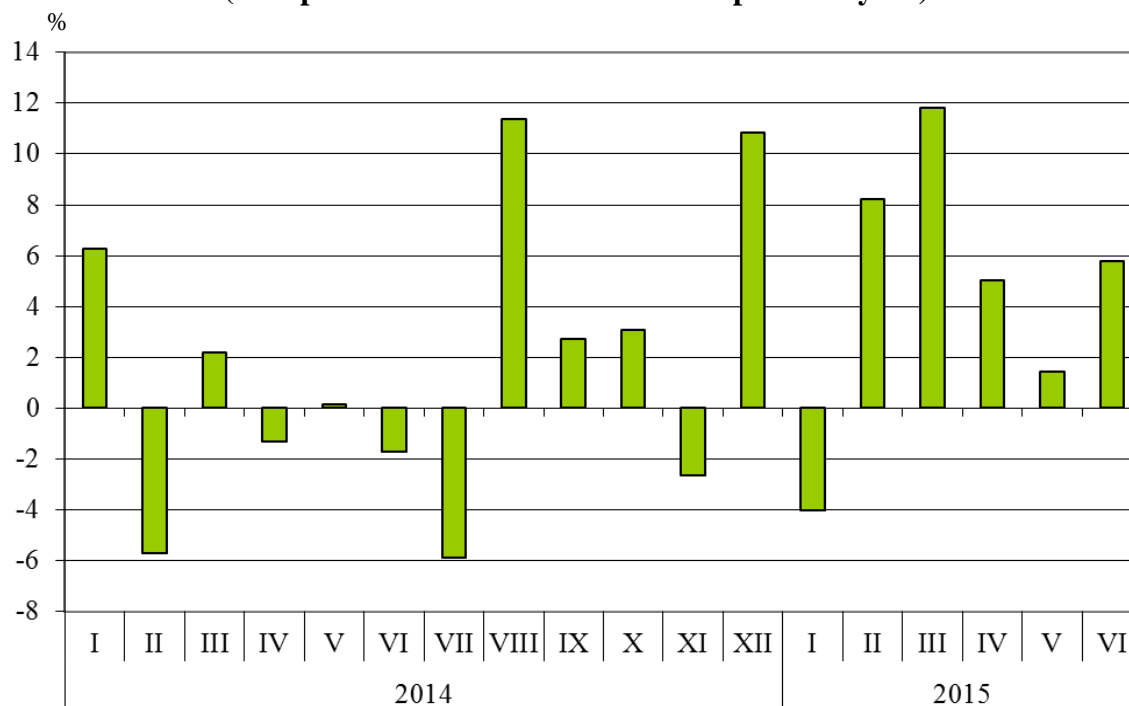


The total value of **all the goods imported in** the country **in the period January - June 2015** amounted to 25.4 Billion BGN (at CIF prices), or by 4.7 % more than the corresponding period of 2014 (Annex, Table 1 and 2).

In June 2015 the total imports increased by 5.8% compared to the corresponding month of the previous year and added up to 4.4 Billion BGN

<sup>1</sup> Value changes at current prices.

**Figure 4. Nominal value<sup>1</sup> change of imports of Bulgaria in the period 2014 - 2015**  
**(Compared to the same month of the previous year)**



The **total foreign trade balance** (exports FOB - import CIF) was negative in the period January - June 2015 and amounted to 3 044.5 Million BGN which was 1 090.4 Million BGN less than the balance in the first six months of 2014 (Annex, Table 1 and 2). At FOB/FOB prices (after elimination of transport and insurance costs on imports) in the period January - June 2015 the total foreign trade balance was also negative and amounted to 1 936.8 Million BGN.

In June 2015 the total foreign trade balance (exports FOB - import CIF) was negative and added up to 383.1 Million BGN. The trade balance at FOB/FOB prices was also negative and amounted to 170.8 Million BGN

<sup>1</sup> Value changes at current prices.

## Annex

Table 1

### Exports, imports and trade balance of Bulgaria in the period January - June 2014<sup>1</sup> and 2015<sup>1</sup> by months

(Million BGN)

Months/Periods	Exports - FOB			Imports - CIF			Imports - FOB <sup>2</sup>			Trade balance - FOB/CIF			Trade balance - FOB/FOB <sup>2</sup>		
	Total	EU	Non EU	Total	EU	Non EU	Total	EU	Non EU	Total	EU	Non EU	Total	EU	Non EU
I.2014	3098.4	1970.7	1127.7	3957.9	2333.2	1624.7	3785.6	2238.7	1546.9	-859.5	-362.5	-497.0	-687.2	-268.0	-419.2
II.2014	3226.7	2001.1	1225.6	3802.3	2465.7	1336.6	3642.6	2366.4	1276.2	-575.6	-464.6	-111.0	-415.9	-365.3	-50.6
III.2014	3195.3	2172.1	1023.2	3938.0	2497.1	1440.9	3781.8	2401.4	1380.4	-742.7	-325.0	-417.7	-586.5	-229.3	-357.2
<b>I - III.2014</b>	<b>9520.4</b>	<b>6143.9</b>	<b>3376.5</b>	<b>11698.2</b>	<b>7296.0</b>	<b>4402.2</b>	<b>11210.0</b>	<b>7006.5</b>	<b>4203.5</b>	<b>-2177.8</b>	<b>-1152.1</b>	<b>-1025.7</b>	<b>-1689.6</b>	<b>-862.6</b>	<b>-827.0</b>
IV.2014	3448.4	2117.8	1330.6	4303.0	2630.4	1672.6	4121.4	2525.4	1596.0	-854.6	-512.6	-342.0	-673.0	-407.6	-265.4
V.2014	3498.5	2065.2	1433.3	4138.1	2366.0	1772.1	3958.4	2271.9	1686.5	-639.6	-300.8	-338.8	-459.9	-206.7	-253.2
VI.2014	3704.6	2270.9	1433.7	4167.5	2641.1	1526.4	3988.0	2532.7	1455.3	-462.9	-370.2	-92.7	-283.4	-261.8	-21.6
<b>IV - VI.2014</b>	<b>10651.5</b>	<b>6453.9</b>	<b>4197.6</b>	<b>12608.6</b>	<b>7637.5</b>	<b>4971.1</b>	<b>12067.8</b>	<b>7330.0</b>	<b>4737.8</b>	<b>-1957.1</b>	<b>-1183.6</b>	<b>-773.5</b>	<b>-1416.3</b>	<b>-876.1</b>	<b>-540.2</b>
<b>I - VI.2014</b>	<b>20171.9</b>	<b>12597.8</b>	<b>7574.1</b>	<b>24306.8</b>	<b>14933.5</b>	<b>9373.3</b>	<b>23277.8</b>	<b>14336.5</b>	<b>8941.3</b>	<b>-4134.9</b>	<b>-2335.7</b>	<b>-1799.2</b>	<b>-3105.9</b>	<b>-1738.7</b>	<b>-1367.2</b>
I.2015	3398.3	2301.5	1096.8	3799.1	2334.7	1464.4	3632.9	2236.6	1396.3	-400.8	-33.2	-367.6	-234.6	64.9	-299.5
II.2015	3419.3	2162.7	1256.6	4114.2	2627.4	1486.8	3938.3	2520.1	1418.2	-694.9	-464.7	-230.2	-519.0	-357.4	-161.6
III.2015	3918.4	2416.8	1501.6	4402.8	2857.7	1545.1	4223.1	2745.4	1477.7	-484.4	-440.9	-43.5	-304.7	-328.6	23.9
<b>I - III.2015</b>	<b>10736.0</b>	<b>6881.0</b>	<b>3855.0</b>	<b>12316.1</b>	<b>7819.8</b>	<b>4496.3</b>	<b>11794.3</b>	<b>7502.1</b>	<b>4292.2</b>	<b>-1580.1</b>	<b>-938.8</b>	<b>-641.3</b>	<b>-1058.3</b>	<b>-621.1</b>	<b>-437.2</b>
IV.2015	3898.8	2398.3	1500.5	4519.3	2860.9	1658.4	4324.5	2743.0	1581.5	-620.5	-462.6	-157.9	-425.7	-344.7	-81.0
V.2015	3736.0	2312.1	1423.9	4196.8	2589.4	1607.4	4018.0	2486.2	1531.8	-460.8	-277.3	-183.5	-282.0	-174.1	-107.9
VI.2015	4026.1	2567.0	1459.1	4409.2	2805.1	1604.1	4196.9	2664.8	1532.1	-383.1	-238.1	-145.0	-170.8	-97.8	-73.0
<b>IV - VI.2015</b>	<b>11660.9</b>	<b>7277.4</b>	<b>4383.5</b>	<b>13125.3</b>	<b>8255.4</b>	<b>4869.9</b>	<b>12539.4</b>	<b>7894.0</b>	<b>4645.4</b>	<b>-1464.4</b>	<b>-978.0</b>	<b>-486.4</b>	<b>-878.5</b>	<b>-616.6</b>	<b>-261.9</b>
<b>I - VI.2015</b>	<b>22396.9</b>	<b>14158.4</b>	<b>8238.5</b>	<b>25441.4</b>	<b>16075.2</b>	<b>9366.2</b>	<b>24333.7</b>	<b>15396.1</b>	<b>8937.6</b>	<b>-3044.5</b>	<b>-1916.8</b>	<b>-1127.7</b>	<b>-1936.8</b>	<b>-1237.7</b>	<b>-699.1</b>

<sup>1</sup> Data are preliminary as of 10-th August 2015.

<sup>2</sup> By data of BNB for the transport costs.



**Table 2**

**Value changes of exports and imports of Bulgaria in the period January - June 2015<sup>1</sup> compared to the same period of the previous year**

(Per cent)

Months/Periods	Exports - FOB			Imports - CIF			Imports - FOB		
	Total	EU	Non EU	Total	EU	Non EU	Total	EU	Non EU
I	9.7	16.8	-2.7	-4.0	0.1	-9.9	-4.0	-0.1	-9.7
II	6.0	8.1	2.5	8.2	6.6	11.2	8.1	6.5	11.1
III	22.6	11.3	46.8	11.8	14.4	7.2	11.7	14.3	7.0
<b>I - III</b>	<b>12.8</b>	<b>12.0</b>	<b>14.2</b>	<b>5.3</b>	<b>7.2</b>	<b>2.1</b>	<b>5.2</b>	<b>7.1</b>	<b>2.1</b>
IV	13.1	13.2	12.8	5.0	8.8	-0.8	4.9	8.6	-0.9
V	6.8	12.0	-0.7	1.4	9.4	-9.3	1.5	9.4	-9.2
VI	8.7	13.0	1.8	5.8	6.2	5.1	5.2	5.2	5.3
<b>IV - VI</b>	<b>9.5</b>	<b>12.8</b>	<b>4.4</b>	<b>4.1</b>	<b>8.1</b>	<b>-2.0</b>	<b>3.9</b>	<b>7.7</b>	<b>-2.0</b>
<b>I - VI</b>	<b>11.0</b>	<b>12.4</b>	<b>8.8</b>	<b>4.7</b>	<b>7.6</b>	<b>-0.1</b>	<b>4.5</b>	<b>7.4</b>	<b>0.0</b>

<sup>1</sup> Data are preliminary as of 10-th August 2015.



Table 3

**Exports, imports and trade balance of Bulgaria with main non EU partner countries<sup>1</sup> in the period January - June 2014<sup>2</sup> and 2015<sup>2</sup>**

Countries	Exports - FOB			Imports - CIF			Trade balance - FOB/CIF	
	2014	2015	Change compared to the same period of the previous year - %	2014	2015	Change compared to the same period of the previous year - %	2014	2015
	Million BGN			Million BGN			Million BGN	
Third countries -total	7574.1	8238.5	8.8	9373.3	9366.2	-0.1	-1799.2	-1127.7
of which:								
Albania	49.5	57.8	16.8	15.4	19.0	23.4	34.1	38.8
Bosnia and Herzegovina	38.3	61.4	60.3	30.6	29.4	-3.9	7.7	32.0
Brazil	14.2	20.8	46.5	55.4	41.5	-25.1	-41.2	-20.7
Canada	30.9	41.9	35.6	22.9	29.9	30.6	8.0	12.0
China	503.1	542.5	7.8	814.9	966.4	18.6	-311.8	-423.9
Egypt	183.9	304.5	65.6	204.8	94.8	-53.7	-20.9	209.7
Former Yugoslav Republic of Macedonia	335.5	353.5	5.4	245.8	257.6	4.8	89.7	95.9
Georgia	190.3	147.8	-22.3	181.8	246.9	35.8	8.5	-99.1
Gibraltar	119.9	24.8	-79.3	0.0	0.0	0.0	119.9	24.8
India	42.0	52.4	24.8	100.9	141.8	40.5	-58.9	-89.4
Indonesia	17.5	23.3	33.1	26.5	31.9	20.4	-9.0	-8.6
Iran, Islamic Republic of	61.5	178.4	190.1	2.9	5.2	79.3	58.6	173.2
Israel	84.0	56.9	-32.3	72.9	41.6	-42.9	11.1	15.3
Japan	24.8	37.7	52.0	90.0	74.4	-17.3	-65.2	-36.7
Kazakhstan	26.6	20.1	-24.4	41.6	24.4	-41.3	-15.0	-4.3
Korea, Republic of	60.0	47.9	-20.2	77.5	79.4	2.5	-17.5	-31.5
Libya	88.3	87.9	-0.5	85.3	67.0	-21.5	3.0	20.9
Morocco	99.7	49.2	-50.7	32.5	69.6	114.2	67.2	-20.4
Namibia	56.7	103.2	82.0	0.0	0.0	0.0	56.7	103.2
Norway	29.9	29.4	-1.7	18.5	14.6	-21.1	11.4	14.8
Peru	4.6	2.7	-41.3	20.3	13.4	-34.0	-15.7	-10.7
Russian Federation	501.1	369.5	-26.3	3435.4	3126.3	-9.0	-2934.3	-2756.8
Serbia	324.1	401.8	24.0	307.2	343.7	11.9	16.9	58.1
Singapore	538.9	402.8	-25.3	17.4	25.6	47.1	521.5	377.2
South Africa	35.3	56.0	58.6	25.2	12.1	-52.0	10.1	43.9
Switzerland	124.1	114.5	-7.7	173.0	185.1	7.0	-48.9	-70.6
Syrian Arab Republic	80.4	36.6	-54.5	20.9	14.6	-30.1	59.5	22.0
Taiwan	18.3	24.4	33.3	71.1	126.4	77.8	-52.8	-102.0
Turkey	1976.2	2122.2	7.4	1473.9	1511.3	2.5	502.3	610.9
Ukraine	114.0	191.9	68.3	605.1	455.7	-24.7	-491.1	-263.8
United Arab Emirates	278.2	223.0	-19.8	38.5	110.0	185.7	239.7	113.0
United States	292.5	374.8	28.1	297.5	233.9	-21.4	-5.0	140.9
Viet-Nam	17.5	20.7	18.3	44.5	53.3	19.8	-27.0	-32.6

<sup>1</sup> Partner country:

- In case of exports (or dispatches) is the country (or Member State) of final destination of the goods.
- In case of imports (or arrivals) is the country (or Member State) of consignment of the goods.

<sup>2</sup> Data are preliminary as of 10-th August 2015.

"0"- figure less than half the unit used.



**Table 4**

**Exports, imports and trade balance of Bulgaria with non EU countries by sections of SITC, rev.4 in the period January - June 2014<sup>1</sup> and 2015<sup>1</sup>**

Sections by SITC	Exports - FOB			Imports - CIF			Trade balance - FOB/CIF	
	2014	2015	Change compared to the same period of the previous year - %	2014	2015	Change compared to the same period of the previous year - %	2014	2015
	Million BGN			Million BGN			Million BGN	
Third countries - total	7574.1	8238.5	8.8	9373.3	9366.2	-0.1	-1799.2	-1127.7
Food and live animals	571.2	767.6	34.4	295.6	397.0	34.3	275.6	370.6
Beverages and tobacco	270.6	270.6	0.0	104.5	83.0	-20.6	166.1	187.6
Crude materials, inedible (except fuel)	588.8	610.8	3.7	882.5	1046.8	18.6	-293.7	-436.0
Mineral fuel, lubricants and related materials	2038.9	1841.6	-9.7	4037.2	3449.1	-14.6	-1998.3	-1607.5
Animals and vegetable oils, fats and waxes	23.0	76.0	230.4	20.8	22.6	8.7	2.2	53.4
Chemical and related products n.e.c.	892.8	1009.9	13.1	724.9	814.5	12.4	167.9	195.4
Manufactured goods classified chiefly by material	1571.3	1602.2	2.0	1495.5	1619.7	8.3	75.8	-17.5
Machinery and transport equipment	1083.3	1303.1	20.3	1336.5	1399.2	4.7	-253.2	-96.1
Miscellaneous manufactured articles	514.4	739.3	43.7	458.4	519.9	13.4	56.0	219.4
Commodities and transactions n.e.c.	19.8	17.4	-12.1	17.4	14.4	-17.2	2.4	3.0

<sup>1</sup> Data are preliminary as of 10-th August 2015.