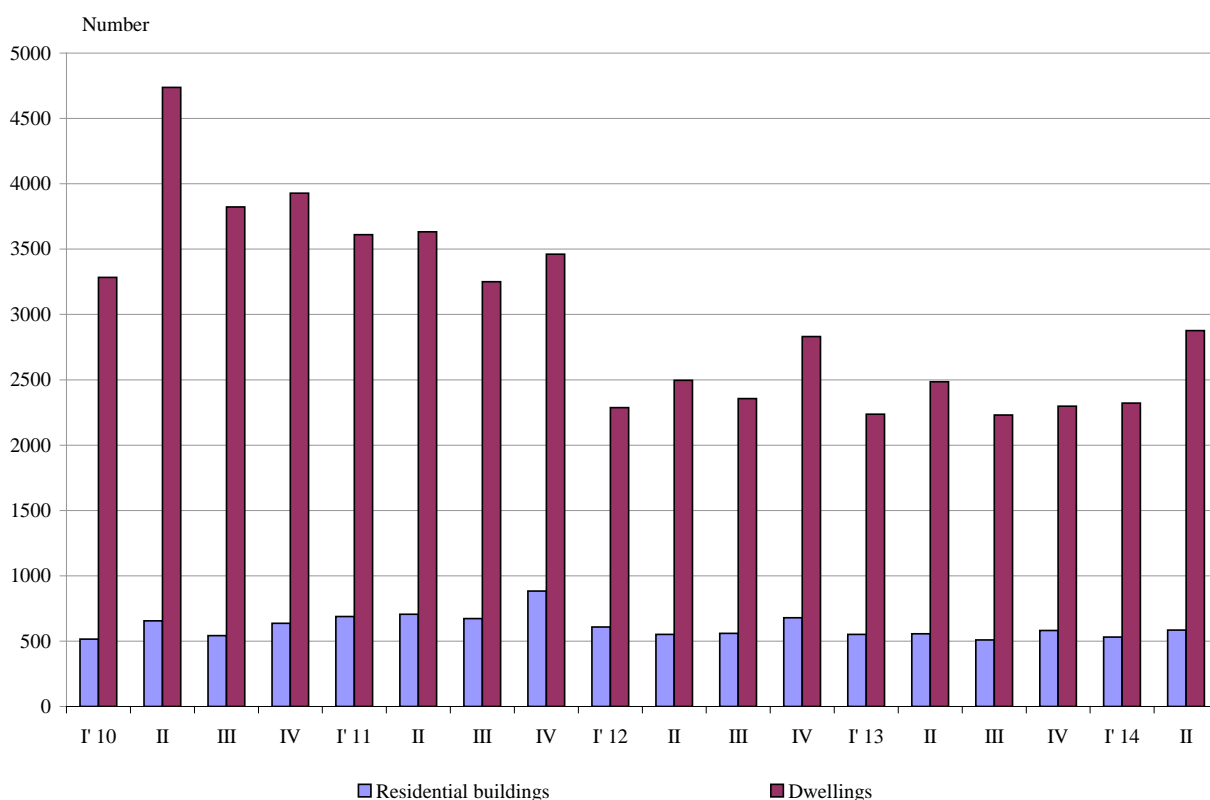




NEWLY BUILT RESIDENTIAL BUILDINGS AND DWELLINGS COMPLETED IN THE SECOND QUARTER OF 2014 (PRELIMINARY DATA)

According to the preliminary data of the National Statistical Institute in the second quarter of 2014 the number of newly built residential buildings was 585 (Annex, Table 1). Compared to the second quarter of 2013 they were by 29 more (or by 5.2%) and the registered increase of the newly built dwellings in them was 15.7% (Figure 1).

Figure 1. Newly built residential buildings and dwellings completed by quarters



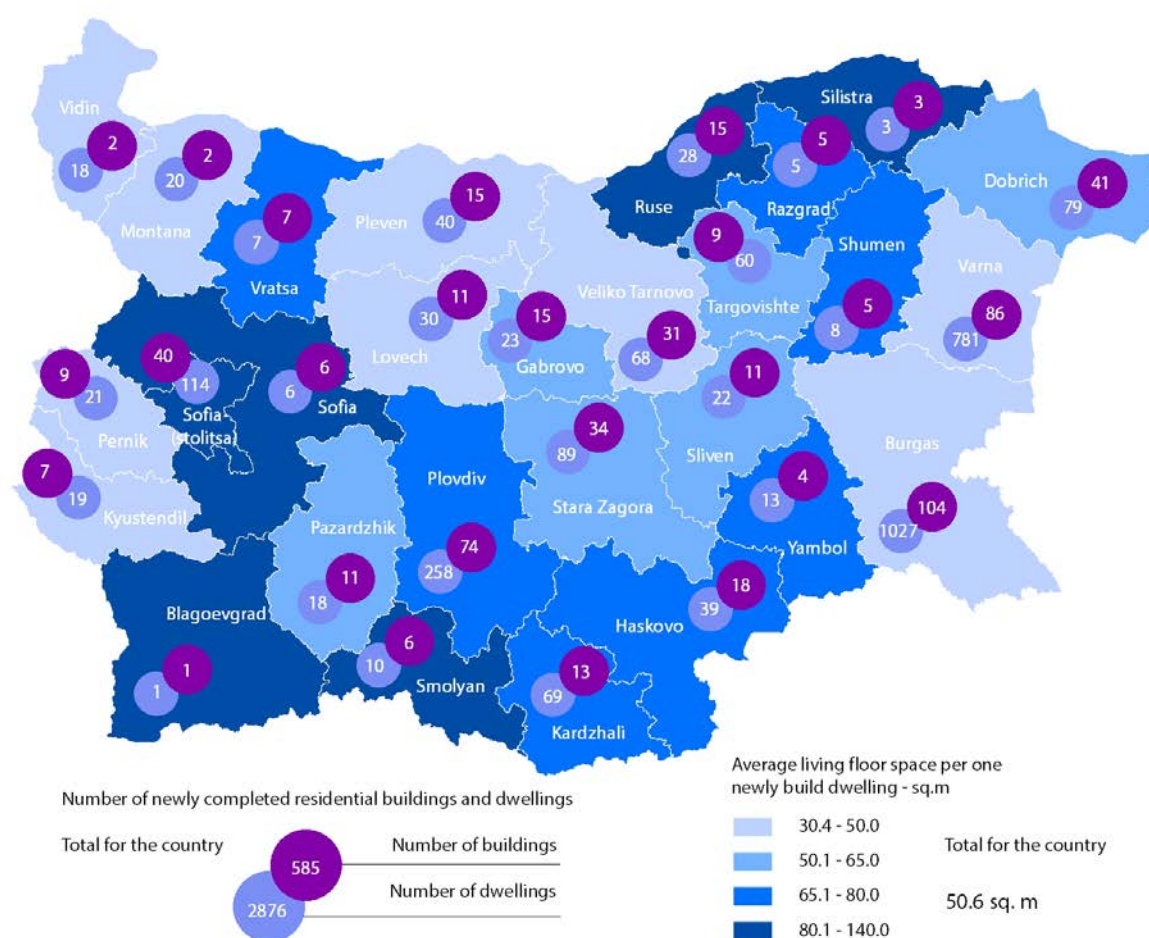
In the second quarter of 2014 77.9% of newly built residential buildings were with steel-concrete construction, 18.1% with solid structure, 3.1% with “other” structures and 0.9% with panel. In comparison with the same quarter of 2013 a decrease of share with solid structure of buildings was observed only.

According to newly built residential buildings distribution by type, with the highest relative share were houses (66.5%), followed by blocks of flats (19.1%). As compared with the second quarter of

2013 the number of blocks of flats, mixed buildings, country houses and buildings of institutional households has risen, while the newly built houses have dropped (Annex, Table 2).

The highest number of residential buildings has been built in the district Burgas - 104 buildings with 1 027 dwellings in them, in the district Varna - 86 residential buildings with 781 dwellings and in the district Plovdiv - 74 residential buildings with 258 dwellings (Figure 2).

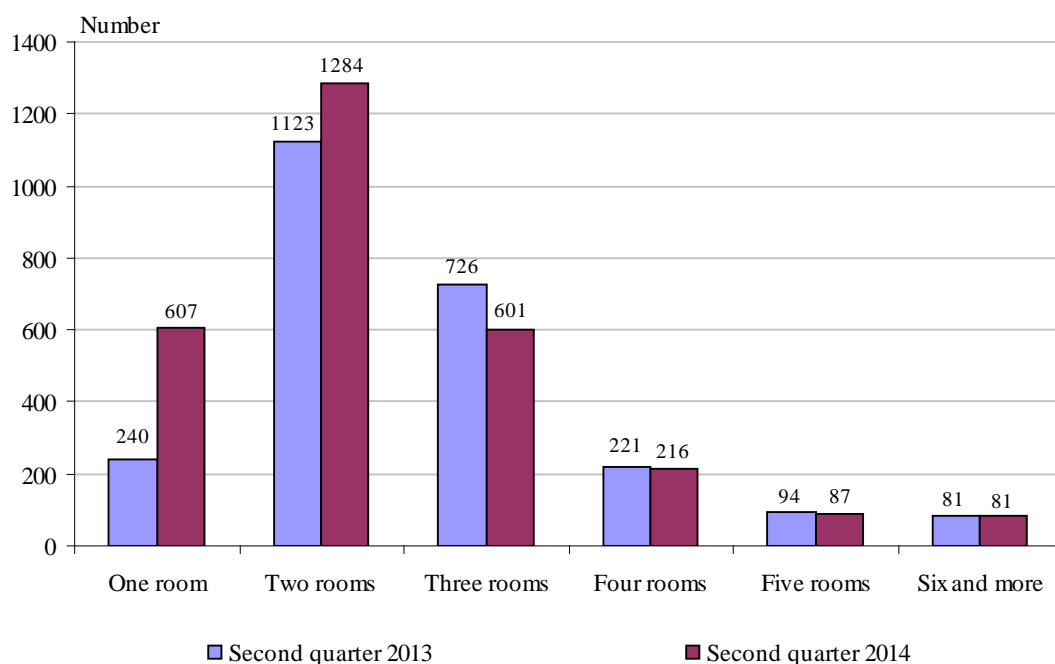
Figure 2. Newly built residential buildings and dwellings completed in the second quarter of 2014 by districts





The largest number of newly built dwellings was with two rooms (44.7%), followed by those with three rooms (20.9%). Compared to the second quarter of 2013 an increase of dwellings as well as with one room (by 367) and two rooms (by 161) were registered. The structure of the housing fund with prevailing share of dwelling with two and three rooms remained unchanged (Figure 3).

Figure 3. Newly built dwellings completed by number of rooms



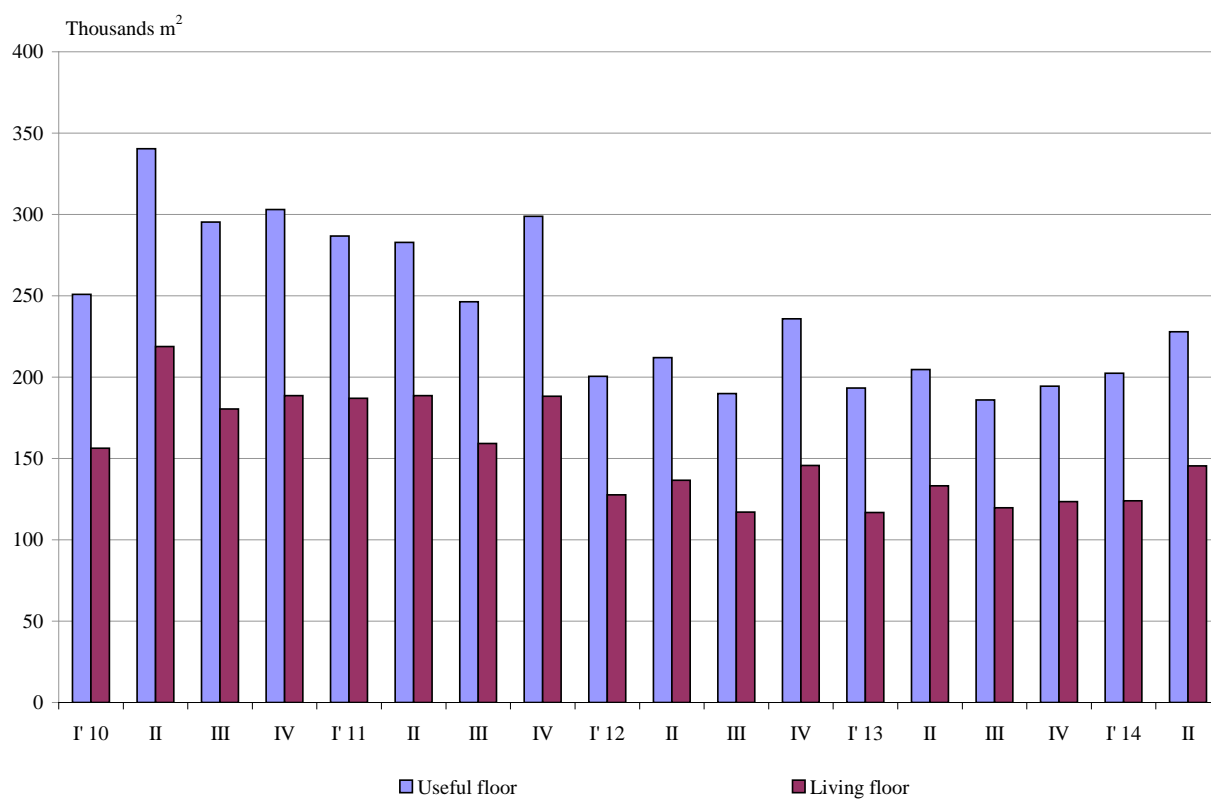
In the second quarter of 2014 **the total useful space** of the newly built dwellings was 228.0 thousand sq. m or by 11.4% more than in the same quarter of 2013. **The living floor** space also has been increased (by 9.1%) and has reached 145.4 thousand sq. m (Figure 4).

At the same time **the average useful floor space** of the newly built dwelling has decreased from 82.3 sq. m in the second quarter of 2013 to 79.3 sq. m in the same quarter of 2014.

The biggest average useful floor space of a newly built dwelling was recorded in the district Silistra - 234.0 sq. m and Blagoevgrad - 190.0 sq. m, and the smallest one in the district Pernik - 42.9 sq. m and district Montana - 57.5 sq. m.



Figure 4. Total useful floor space and living floor space of the newly built dwellings completed by quarters





Methodological notes

The statistical data about the newly built residential buildings and dwellings was developed on the basis of the quarterly reports obtained from the municipal administrations.

In the scope of the survey were the newly built residential buildings with approved record of handover of Form 16 or a valid usage license according to Regulation № 2/31.07.2003 of the Ministry of Regional Development and Public Works.

Living floor space is the floor space of living-rooms, bedrooms, recesses for sleeping, dining-rooms, the rooms for day-stay, cabinets and libraries of scientists and drawing-rooms but does not include the space of the kitchens.

Service floor space is the floor space of the rooms and kitchens with less than 4 square meters floor space, vestibules with a portal or an other screen, corridors, bathrooms, toilets, larders, hanging closets, other service rooms such as drying-rooms, laundries or balconies not depending on their space. The space of kitchens with over 4 sq. m. floor space is shown separately.

The useful floor space of the dwelling is sum of the living-floor-space, service floor space and the space of the kitchens.

Annex

Table 1

Newly build residential buildings and dwellings completed in the second quarter of 2014¹

Districts	Newly completed residential buildings and dwellings - in numbers		Useful floor area of newly built dwellings - sq. m			
	Buildings	Dwellings	Total	Living floor space	Service floor space	Area of kitchens
Total	585	2876	227957	145392	64718	17847
Blagoevgrad	1	1	190	140	43	7
Burgas	104	1027	64140	41764	15107	7269
Varna	86	781	53325	31705	19169	2451
Veliko Tarnovo	31	68	5143	3002	1665	476
Vidin	2	18	1531	866	543	122
Vratsa	7	7	860	536	272	52
Gabrovo	15	23	2839	1364	1190	285
Dobrich	41	79	6749	4769	1357	623
Kardzhali	13	69	7051	4525	1872	654
Kyustendil	7	19	1823	666	1011	146
Lovech	11	30	2506	1397	823	286
Montana	2	20	1149	759	235	155
Pazardzhik	11	18	1697	1134	358	205
Pernik	9	21	901	638	198	65
Pleven	15	40	2738	1919	558	261
Plovdiv	74	258	28695	19102	7747	1846
Razgrad	5	5	475	329	112	34
Ruse	15	28	3549	2276	1015	258
Silistra	3	3	702	305	337	60
Sliven	11	22	1966	1297	575	94
Smolyan	6	10	1415	1019	300	96
Sofia	6	6	901	574	274	53
Sofia (stolitsa)	40	114	17896	12286	4710	900
Stara Zagora	34	89	7414	5192	1601	621
Targovishte	9	60	5665	3455	2024	186
Haskovo	18	39	4696	2994	1255	447
Shumen	5	8	735	525	131	79
Yambol	4	13	1206	854	236	116

¹ Preliminary data.



Table 2

Newly built residential buildings by type of building

	(Number)									
	2012				2013 ¹				2014 ¹	
	I quarter	II quarter	III quarter	IV quarter	I quarter	II quarter	III quarter	IV quarter	I quarter	II quarter
Total	609	552	559	679	551	556	510	582	532	585
Houses	446	359	381	455	388	391	342	392	367	389
Block of flats	83	93	100	126	97	99	92	88	75	112
Mixed buildings	28	35	28	43	26	29	21	30	25	39
Hostels	1	-	-	2	1	2	2	5	8	-
Country houses	51	64	48	52	39	35	53	62	47	42
Buildings of institutional households	-	1	2	1	-	-	-	5	10	3

¹ Preliminary data.