

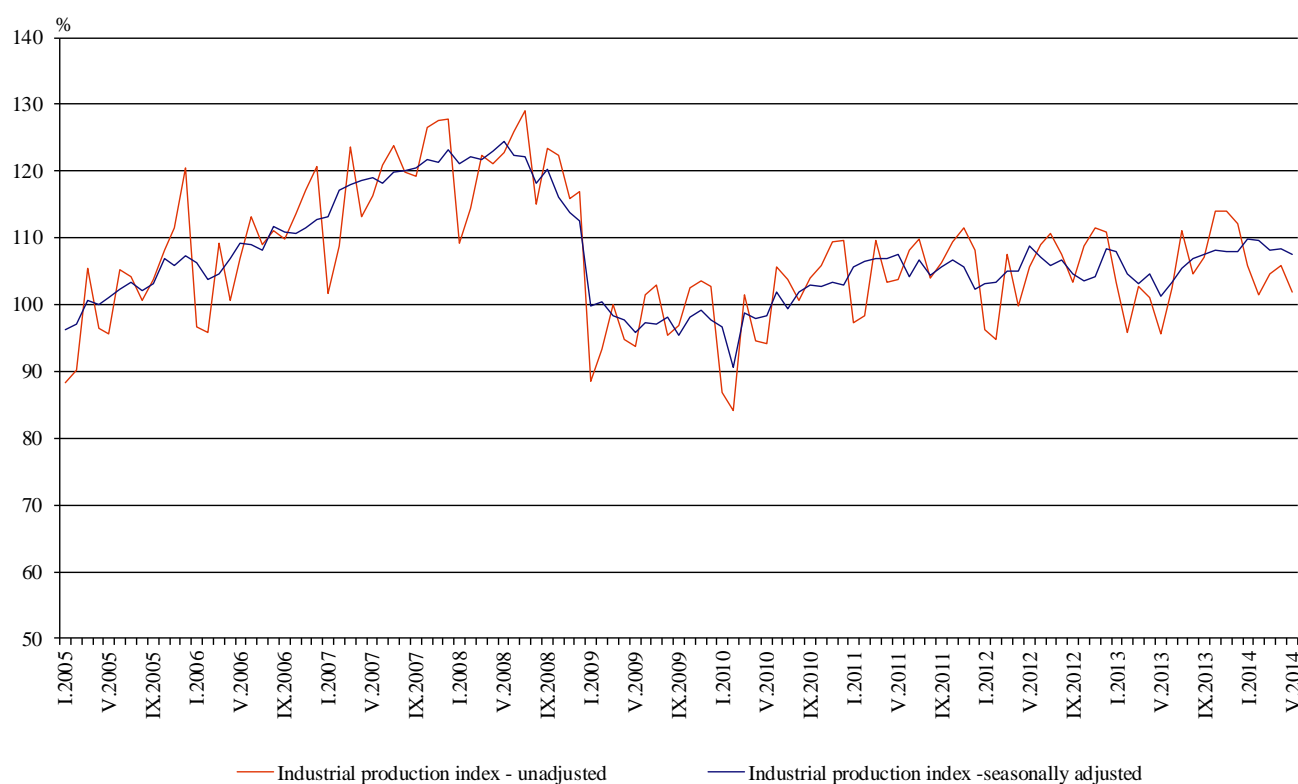


INDUSTRIAL PRODUCTION INDICES IN MAY 2014¹

According to the preliminary data the Industrial Production Index², seasonally adjusted³, decreased by 0.7% in May 2014 as compared to April 2014.

In May 2014 working day adjusted⁴ Industrial Production Index rose by 4.9% in comparison with the same month of 2013.

Figure 1. Industrial Production Indices (2010 = 100)



¹ May 2014 data are preliminary.

² Monthly Industrial Production and Industrial turnover indices measure changes in production and turnover values of industrial enterprises. This information can be used to assess the current economic development and for short-term forecasts. Indices do not measure the actual production level, it aims to measure the average change in value of production between two points of time. Indices are compiled on the basis of information collected through representative sampling survey on industrial enterprises. The sample covers enterprises with annual turnover more than 97% of total turnover in industry.

Industrial production indices are calculated at constant base year that is to say they are weighted with the structure of the value added at factor costs in the base year.

³ Seasonal adjustment is a statistical method, which eliminates the seasonal component of time series.

⁴ Working day adjustment is an adjustment for variations caused by calendar effects, different number of calendar and working days in the months, national holidays and outliers (for example the presence of more non-working days in May could contribute to the decline in the production in some activities).

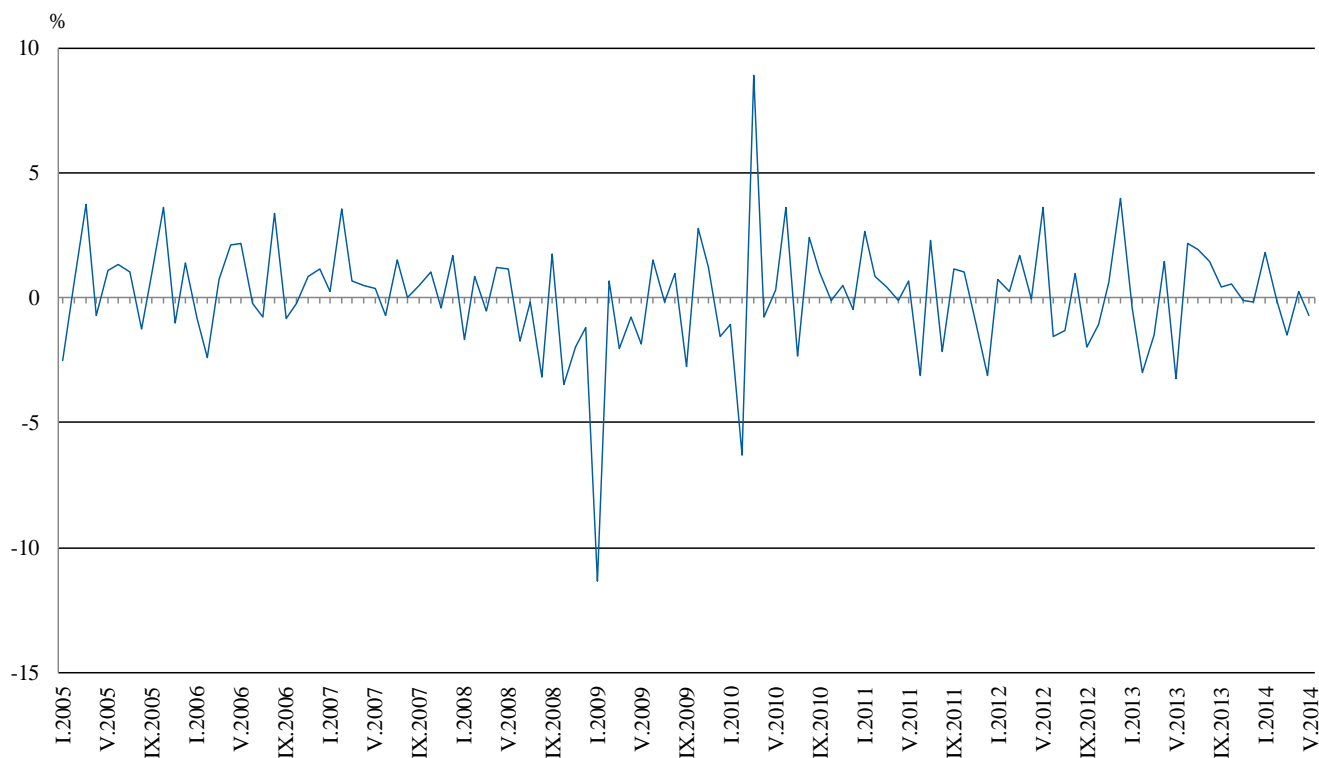


Monthly comparisons

In May 2014 as compared to April 2014, the seasonally adjusted Industrial Production Index decreased in the manufacturing by 1.8% and in the mining and quarrying industry by 0.8%, while in the electricity, gas, steam and air conditioning supply an increase by 0.1% was seen.

The most significant decreases of production in the manufacturing were registered in the manufacture of other transport equipment by 15.7%, in the manufacture of tobacco products by 12.9%, in the manufacture of machinery and equipment by 11.1%, in the manufacture of basic pharmaceutical products and pharmaceutical preparations by 6.1%, in the manufacture of beverages by 6.0%. There was increase in the manufacture of basic metals by 5.4%, in the manufacture of wearing apparel by 3.5%, in the manufacture of other non-metallic mineral products by 2.0%.

**Figure 2. Changes of Industrial Production Indices compared to the previous month
(Seasonally adjusted)**



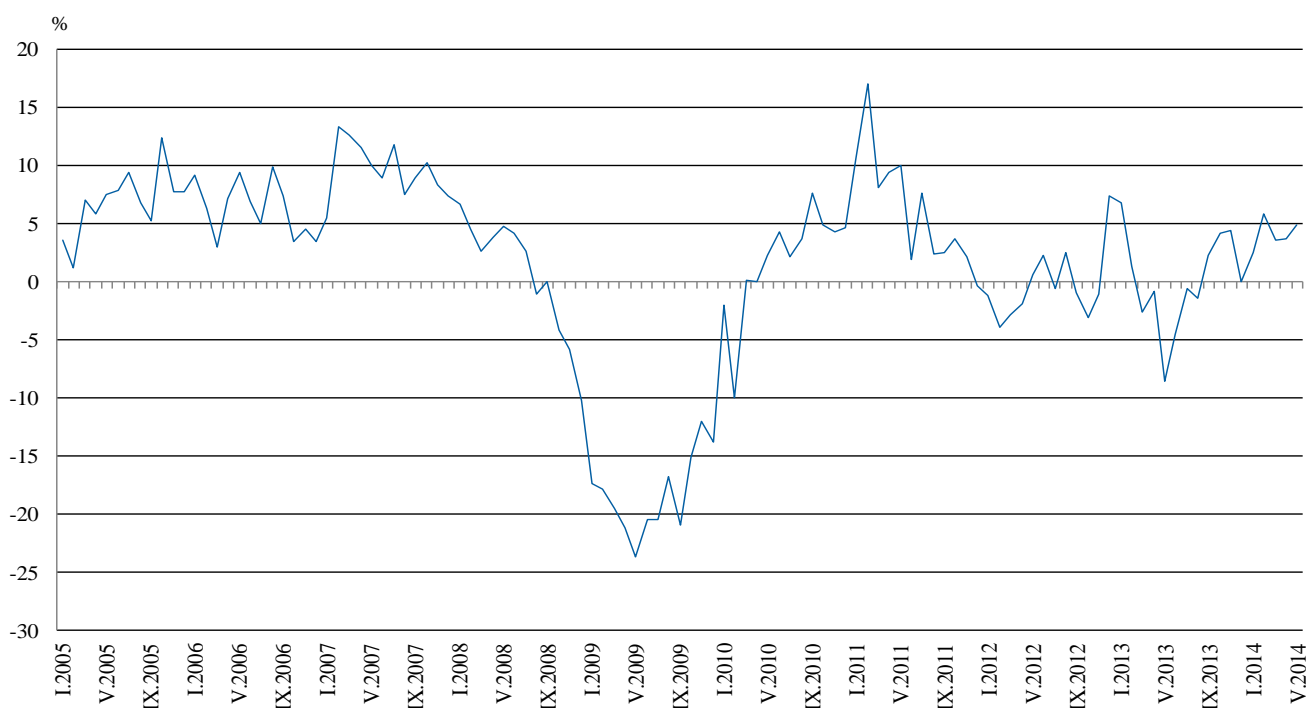


Annual comparisons

On annual basis in May 2014 Industrial Production Index, calculated from working day adjusted data increased in the mining and quarrying industry by 10.5%, in the electricity, gas, steam and air conditioning supply by 7.4% and in the manufacturing by 2.8%.

In the manufacturing, the more significant increases compared to the same month of the previous year were seen in the manufacture of motor vehicles, trailers and semi-trailers by 32.8%, in the manufacture of other transport equipment by 24.9%, in the manufacture of rubber and plastic products by 12.6%, in the manufacture of computer, electronic and optical products by 9.4%, in the manufacture of basic metals by 9.1%. Decreases were registered in the manufacture of tobacco products by 17.4%, in the manufacture of beverages by 13.5%, in the manufacture of leather and related products 6.4%.

Figure 3. Changes of Industrial Production Indices compared to the same month of the previous year (Working day adjusted)



The final data on Industrial Production and Turnover Indices for April 2014 can be found on the NSI web-site: (<http://www.nsi.bg/en>).

Changes of Industrial Production Indices compared to the previous month¹

(Per cent)

Economic Activities	NACE.BG -2008	2013	2014				
		XII	I	II	III	IV	V
Industry	B_TO_E36	-0.2	1.8	-0.1	-1.5	0.2	-0.7
Mining and quarrying	B	12.2	-3.9	-17.3	-3.7	8.0	-0.8
of which:							
Mining of coal and lignite	B05	12.4	-1.1	-16.1	-15.2	31.9	-0.6
Mining of metal ores	B07	7.6	-4.8	-17.5	-2.5	-12.3	-0.2
Other mining and quarrying	B08	-13.7	21.2	-5.6	1.6	11.0	12.8
Manufacturing	C	-1.2	2.2	2.0	-2.4	0.5	-1.8
of which:							
Manufacture of food products	C10	-6.3	0.4	-1.8	4.1	-0.3	-4.3
Manufacture of beverages	C11	3.6	-5.6	11.0	-1.7	-5.6	-6.0
Manufacture of tobacco products	C12	9.8	2.1	6.4	-5.5	3.6	-12.9
Manufacture of textiles	C13	2.3	11.6	-1.5	4.4	-4.7	1.0
Manufacture of wearing apparel	C14	-3.0	0.1	-1.2	3.0	-2.7	3.5
Manufacture of leather and related products	C15	2.7	3.2	-0.6	-3.4	2.8	-5.9
Manufacture of wood and of products of wood and cork, except furniture; manufacture of articles of straw and plaiting materials	C16	-7.8	14.9	-0.5	-7.7	-2.1	-1.4
Manufacture of paper and paper products	C17	-4.1	5.8	-3.6	-3.9	1.9	-0.6
Printing and reproduction of recorded media	C18	11.3	7.4	-3.0	2.0	-3.6	1.7
Manufacture of chemicals and chemical products	C20	-0.5	-4.4	2.6	0.1	8.3	0.4
Manufacture of basic pharmaceutical products and pharmaceutical preparations	C21	-0.2	9.0	-4.8	-5.1	7.3	-6.1
Manufacture of rubber and plastic products	C22	0.0	11.5	1.1	-2.5	5.0	-4.3
Manufacture of other non-metallic mineral products	C23	0.8	-0.9	7.3	-5.5	2.1	2.0
Manufacture of basic metals	C24	-5.9	12.4	-4.8	-2.8	-3.3	5.4
Manufacture of fabricated metal products, except machinery and equipment	C25	-11.7	13.6	4.7	-11.1	8.8	-4.8
Manufacture of computer, electronic and optical products	C26	-16.9	33.2	-9.4	9.0	-8.7	7.3
Manufacture of electrical equipment	C27	-5.5	12.1	2.3	-1.3	0.3	-3.4
Manufacture of machinery and equipment n.e.c.	C28	4.6	0.6	-6.8	-1.9	9.5	-11.1
Manufacture of motor vehicles, trailers and semi-trailers	C29	-6.3	28.7	-4.2	2.9	-4.3	-2.2
Manufacture of other transport equipment	C30	-19.3	15.6	2.5	7.0	6.5	-15.7
Manufacture of furniture	C31	-4.5	6.6	-3.0	-2.8	2.7	-0.8
Other manufacturing	C32	-16.2	4.1	12.5	8.1	-6.8	-12.4
Repair and installation of machinery and equipment	C32	3.0	4.6	-0.3	-2.3	-4.7	1.5
Electricity, gas, steam and air conditioning supply	D	3.0	5.0	-7.9	-0.9	-4.5	0.1
Electricity, gas, steam and air conditioning supply	D35	3.0	5.0	-7.9	-0.9	-4.5	0.1

¹ Seasonally adjusted.



Table 2

Changes of Industrial Production Indices compared to the same month of the previous year¹
(Per cent)

Economic Activities	NACE.BG 2008	2013	2014				
		XII	I	II	III	IV	V
Industry	B_TO_E36	0.0	2.5	5.9	3.6	3.7	4.9
Mining and quarrying	B	12.8	17.6	-0.7	5.4	11.7	10.5
of which:							
Mining of coal and lignite	B05	12.3	22.5	13.6	43.4	67.7	137.8
Mining of metal ores	B07	15.2	16.8	-6.9	-3.8	-7.7	-14.9
Other mining and quarrying	B08	-19.5	7.6	-4.4	-3.9	-0.7	17.2
Manufacturing	C	0.5	1.1	6.3	4.2	3.9	2.8
of which:							
Manufacture of food products	C10	-2.2	-3.1	1.6	6.1	1.6	-0.3
Manufacture of beverages	C11	15.8	-13.2	10.7	12.0	0.6	-13.5
Manufacture of tobacco products	C12	-8.3	-11.2	-0.8	-19.2	-15.3	-17.4
Manufacture of textiles	C13	-6.4	3.3	12.4	16.4	5.5	8.8
Manufacture of wearing apparel	C14	3.7	1.6	-0.5	9.6	-4.9	7.4
Manufacture of leather and related products	C15	5.3	-2.1	4.6	2.2	-8.3	-6.4
Manufacture of wood and of products of wood and cork, except furniture; manufacture of articles of straw and plaiting materials	C16	-0.8	9.9	13.0	1.2	-5.2	-0.4
Manufacture of paper and paper products	C17	5.6	14.6	4.9	-4.2	-3.4	0.3
Printing and reproduction of recorded media	C18	8.9	17.3	11.0	12.6	-6.7	-1.6
Manufacture of chemicals and chemical products	C20	4.7	-8.8	0.4	3.7	6.5	4.1
Manufacture of basic pharmaceutical products and pharmaceutical preparations	C21	6.8	9.9	6.1	-1.7	6.7	-3.6
Manufacture of rubber and plastic products	C22	16.4	8.8	14.2	20.3	20.3	12.6
Manufacture of other non-metallic mineral products	C23	5.7	-6.5	13.4	4.1	-1.0	7.3
Manufacture of basic metals	C24	7.3	-17.4	16.1	9.5	0.0	9.1
Manufacture of fabricated metal products, except machinery and equipment	C25	-9.0	-1.1	20.5	3.0	12.7	8.1
Manufacture of computer, electronic and optical products	C26	-9.1	15.0	-13.5	25.6	0.0	9.4
Manufacture of electrical equipment	C27	-20.4	1.9	7.7	7.8	9.1	7.2
Manufacture of machinery and equipment n.e.c.	C28	19.3	17.0	6.7	-1.9	15.2	0.6
Manufacture of motor vehicles, trailers and semi-trailers	C29	22.0	48.3	29.6	41.0	30.8	32.8
Manufacture of other transport equipment	C30	-29.1	-31.3	-6.6	26.4	7.2	24.9
Manufacture of furniture	C31	0.6	1.9	-1.5	1.0	0.7	8.1
Other manufacturing	C32	3.4	-4.8	5.5	10.8	7.0	-3.3
Repair and installation of machinery and equipment	C33	-18.1	-2.5	-2.6	0.7	-8.4	0.7
Electricity, gas, steam and air conditioning supply	D	-6.3	0.5	8.3	1.9	5.5	7.4
Electricity, gas, steam and air conditioning supply	D35	-6.3	0.5	8.3	1.9	5.5	7.4

¹ Working day adjusted.



Table 3

**Industrial Production Indices
(Seasonally adjusted, 2010 = 100)**

NACE.BG - 2008 Code	2013								2014				
	V	VI	VII	VIII	IX	X	XI	XII	I	II	III	IV	V
B_TO_E36	101.3	103.4	105.4	107.0	107.5	108.1	108.0	107.8	109.8	109.7	108.1	108.3	107.6
B	89.2	94.2	96.2	103.6	98.8	107.3	107.4	120.4	115.8	95.7	92.2	99.6	98.8
B05	61.3	91.9	81.2	108.6	97.3	118.4	111.0	124.7	123.4	103.5	87.8	115.9	115.2
B07	96.2	91.0	104.5	99.0	101.4	101.5	113.1	121.7	115.8	95.6	93.2	81.7	81.5
B08	111.4	110.5	108.8	118.6	108.8	105.8	102.5	88.5	107.3	101.2	102.9	114.2	128.7
C	103.1	103.5	106.0	105.0	106.0	108.0	108.3	107.0	109.3	111.5	108.8	109.4	107.4
C10	88.0	94.7	93.8	85.6	90.1	92.5	95.7	89.7	90.0	88.4	92.1	91.8	87.9
C11	106.0	105.8	98.1	99.8	105.3	97.8	99.8	103.4	97.6	108.4	106.5	100.6	94.5
C12	121.3	111.1	113.5	109.6	114.6	104.5	101.7	111.7	114.1	121.4	114.7	118.9	103.5
C13	99.0	98.4	96.6	101.5	105.3	100.4	95.5	97.6	109.0	107.3	112.1	106.8	107.9
C14	96.9	97.1	98.1	100.1	99.5	96.6	104.1	100.9	100.9	99.8	102.8	100.0	103.5
C15	76.5	71.4	76.1	75.1	80.6	78.8	73.4	75.3	77.8	77.3	74.7	76.7	72.2
C16	97.0	97.8	97.4	93.1	98.5	96.7	103.9	95.9	110.1	109.5	101.1	99.0	97.6
C17	114.6	115.3	121.5	119.6	120.3	121.1	123.0	117.9	124.7	120.2	115.5	117.7	116.9
C18	111.4	99.2	104.9	95.1	101.0	96.9	94.3	105.0	112.8	109.5	111.7	107.7	109.6
C20	102.2	95.6	99.2	92.4	86.4	96.9	99.9	99.4	95.0	97.5	97.7	105.8	106.1
C21	136.1	123.4	133.5	133.9	138.8	133.2	135.7	135.4	147.5	140.4	133.3	143.0	134.4
C22	110.9	107.6	111.3	110.2	115.4	114.0	114.5	114.6	127.8	129.2	126.0	132.2	126.6
C23	110.5	106.0	107.9	116.6	113.7	110.6	111.6	112.5	111.5	119.6	113.1	115.4	117.8
C24	96.1	89.7	100.8	101.9	99.8	106.7	104.5	98.4	110.5	105.3	102.3	98.9	104.3
C25	99.5	107.5	110.6	107.0	109.2	126.4	111.9	98.8	112.2	117.6	104.6	113.7	108.3
C26	125.6	108.6	127.0	120.2	118.4	142.2	127.7	106.1	141.3	128.0	139.5	127.4	136.8
C27	115.0	122.3	118.5	125.4	119.3	118.8	121.1	114.4	128.2	131.1	129.5	129.9	125.5
C28	129.1	125.3	131.4	130.3	136.8	138.6	142.4	148.9	149.8	139.6	137.0	150.1	133.4
C29	94.3	106.0	111.2	96.8	108.5	108.1	113.6	106.5	137.1	131.3	135.1	129.3	126.5
C30	62.1	71.4	72.7	70.7	69.2	85.9	85.9	69.3	80.1	82.1	87.9	93.6	78.9
C31	111.9	116.3	115.3	119.8	120.4	122.8	124.1	118.5	126.3	122.6	119.1	122.4	121.4
C32	138.3	151.8	152.5	147.3	143.3	156.8	156.7	131.2	136.6	153.6	166.1	154.8	135.6
C33	76.1	70.6	73.5	72.5	78.4	84.3	75.6	77.9	81.5	81.2	79.4	75.6	76.8
D	97.2	107.1	114.2	114.5	115.4	110.4	109.8	113.1	118.7	109.2	108.3	103.3	103.5
D35	97.2	107.1	114.2	114.5	115.4	110.4	109.8	113.1	118.7	109.2	108.3	103.3	103.5



Table 4

**Industrial Production Indices
(Working day adjusted, 2010 = 100)**

NACE.BG - 2008 Code	2011	2012	2013								2014				
	V	V	V	VI	VII	VIII	IX	X	XI	XII	I	II	III	IV	V
B_TO_E36	104.8	105.5	96.4	104.8	110.2	104.4	107.5	112.5	114.8	113.9	105.1	101.6	106.9	104.1	101.2
B	112.6	101.4	84.1	90.1	95.7	101.7	101.8	121.8	117.1	131.6	109.9	88.4	87.6	92.2	93.0
B05	129.1	107.9	40.1	72.6	72.4	106.9	101.9	145.9	125.6	145.0	135.2	98.7	77.5	93.1	95.4
B07	92.1	86.4	101.1	96.7	103.8	96.2	99.0	108.2	113.3	129.6	102.3	85.4	93.2	85.7	86.1
B08	110.4	106.4	122.4	119.1	120.0	129.7	119.1	122.3	114.5	89.0	67.6	71.8	93.3	112.7	143.3
C	108.6	111.5	105.0	111.3	113.7	104.0	109.0	114.5	114.1	103.1	94.2	98.6	107.6	111.1	108.0
C10	93.9	93.7	86.2	97.3	95.1	88.4	97.7	102.0	102.5	94.1	75.8	75.7	90.4	88.1	85.9
C11	110.5	111.6	120.9	132.5	122.0	123.9	118.3	88.9	90.5	107.9	60.7	70.7	98.7	98.6	104.5
C12	108.6	145.1	137.2	138.8	136.7	114.8	126.7	94.5	90.2	103.3	81.6	92.8	114.4	117.6	113.3
C13	129.9	96.9	111.2	111.3	101.2	81.6	101.4	100.3	98.8	85.1	92.7	103.1	127.0	117.7	121.0
C14	98.3	85.1	88.7	103.6	112.7	99.9	95.7	92.3	104.8	101.5	102.9	98.3	100.5	93.8	95.3
C15	88.8	80.4	66.6	75.5	92.1	74.7	88.1	83.0	72.7	69.0	77.5	75.3	74.3	65.8	62.3
C16	96.9	111.2	97.5	107.3	109.0	96.2	107.1	108.6	113.3	87.7	88.8	90.7	96.5	97.0	97.1
C17	132.9	113.9	120.5	121.8	129.7	118.4	118.5	116.7	117.5	111.0	117.0	113.6	119.6	122.0	120.8
C18	93.0	89.4	108.2	103.9	105.3	98.0	106.5	105.1	100.6	116.9	93.5	96.7	106.3	104.4	106.5
C20	123.5	114.0	102.8	99.2	100.0	86.8	86.3	94.5	103.3	98.4	88.4	91.6	107.7	109.9	107.1
C21	108.7	124.1	136.5	134.9	124.6	128.9	142.2	142.8	139.4	131.5	123.5	142.5	133.3	144.5	131.6
C22	107.3	107.8	110.7	116.2	122.5	113.3	123.3	127.3	122.2	102.0	103.8	109.4	125.6	130.8	124.7
C23	118.9	114.0	119.5	116.5	116.8	123.8	124.6	125.2	121.1	94.7	78.6	96.0	109.3	121.6	128.2
C24	121.1	100.2	100.9	86.5	116.8	94.6	92.0	118.2	116.8	72.6	114.1	102.6	98.3	105.4	110.1
C25	114.0	109.6	98.2	114.3	115.3	105.6	110.8	132.8	119.8	112.4	83.4	103.7	105.6	113.7	106.2
C26	129.1	129.4	125.4	113.7	126.5	105.8	121.4	142.8	135.4	123.1	124.8	115.0	143.7	126.1	137.2
C27	101.7	129.1	109.7	134.0	126.3	113.0	122.4	129.7	133.8	110.0	116.3	121.6	128.5	131.1	117.6
C28	115.8	134.9	130.1	137.2	139.8	118.5	136.2	142.2	147.0	143.1	129.4	132.5	146.2	153.8	130.8
C29	102.8	86.6	96.2	114.3	113.5	82.9	111.9	117.2	123.3	91.6	129.7	124.5	141.8	133.9	127.8
C30	224.0	123.4	77.7	86.7	71.6	63.9	65.2	82.0	79.4	74.8	53.6	72.6	93.3	94.6	97.1
C31	108.8	119.4	109.9	122.2	118.6	120.8	124.0	135.2	135.1	124.2	106.5	106.5	117.5	117.2	118.8
C32	128.4	135.7	141.4	172.9	153.3	149.9	153.5	185.1	165.5	114.9	109.8	132.2	166.7	150.9	136.7
C33	78.2	92.4	70.7	71.3	71.2	71.6	80.8	89.9	83.8	110.3	56.6	69.7	78.3	68.5	71.2
D	91.6	87.7	78.0	92.8	107.1	106.3	104.0	105.1	118.9	139.7	139.5	119.4	117.4	92.6	83.8
D35	91.6	87.7	78.0	92.8	107.1	106.3	104.0	105.1	118.9	139.7	139.5	119.4	117.4	92.6	83.8