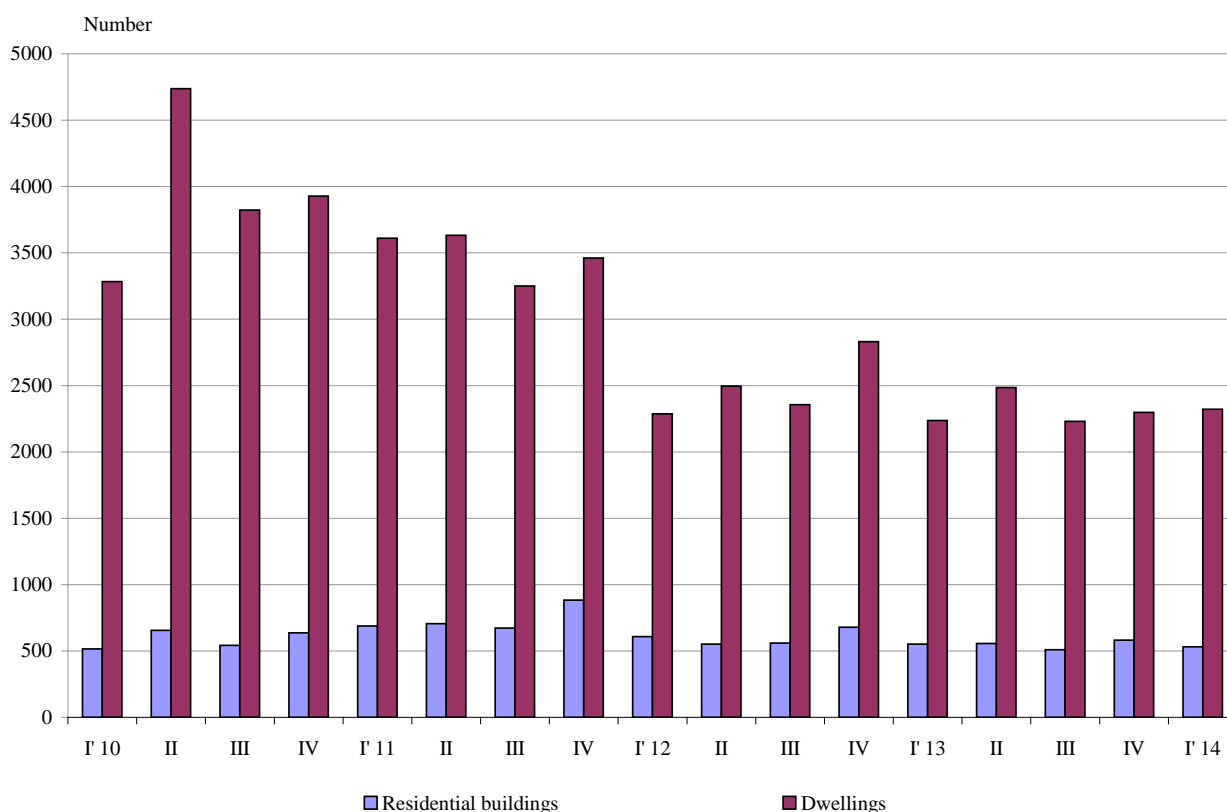




NEWLY BUILT RESIDENTIAL BUILDINGS AND DWELLINGS COMPLETED IN THE FIRST QUARTER OF 2014 (PRELIMINARY DATA)

According to the preliminary data of the National Statistical Institute in the first quarter of 2014 the number of newly built residential buildings was 532 (Annex, Table 1). Compared to the first quarter of 2013 they were by 19 less (or by 3.4%), while the newly built dwellings in them were by 3.8% more (Figure 1).

Figure 1. Newly built residential buildings and dwellings completed by quarters



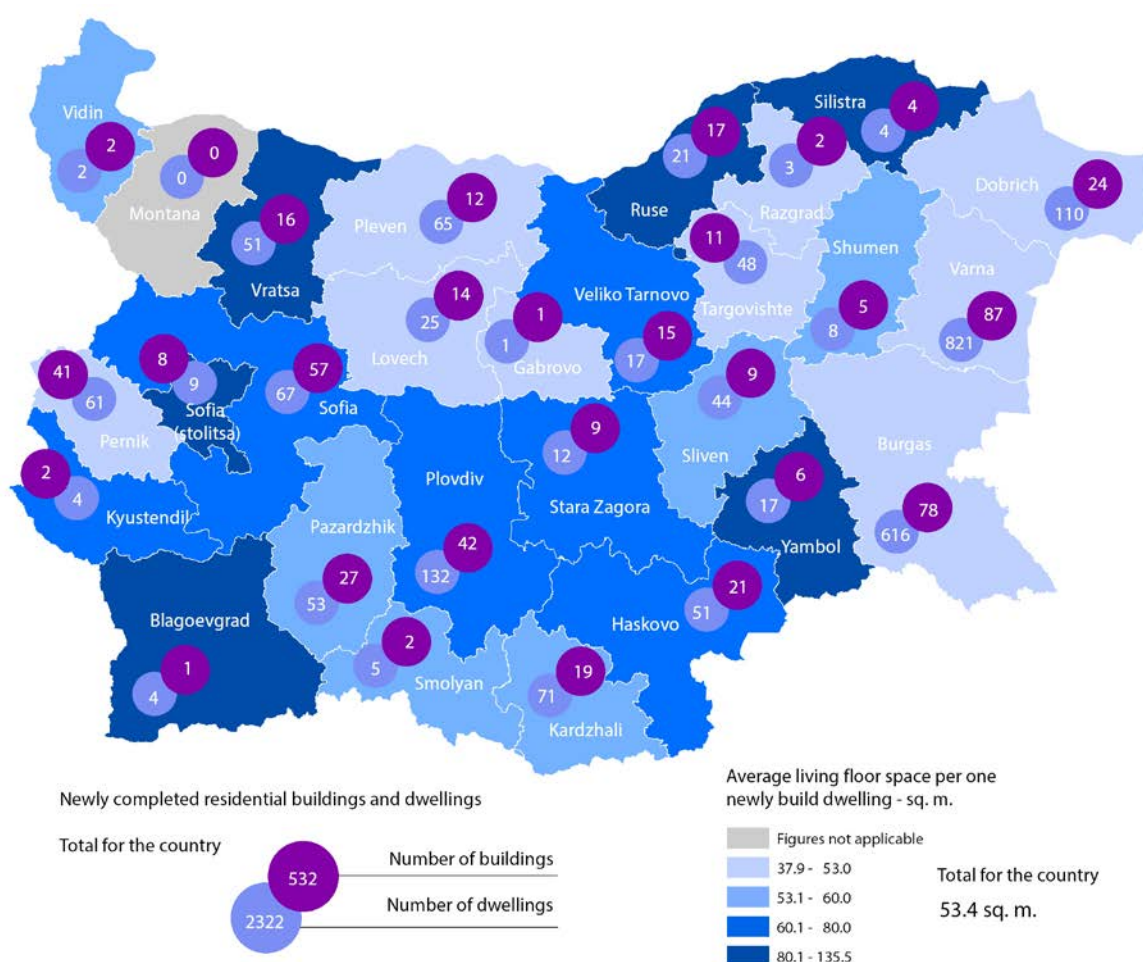
In the first quarter of 2014 69.1% of newly built residential buildings were with steel-concrete construction, 28.8% with solid structure and 2.1% with “other”. In comparison with the same quarter of 2013 an increase of buildings share with solid structure only was observed.



According to newly built residential buildings distribution by type, with the highest relative share were houses (69.0%), followed by blocks of flats (14.1%). As compared with the first quarter of 2013 number of houses and blocks has dropped by 21 and 22 respectively. At the same time the newly built buildings of institutional households, country houses and hostels have risen by 10, 8 and 7 respectively (Annex, Table 2).

The highest number of residential buildings has been built in the district Varna - 87 buildings with 821 dwellings in them, district Burgas - 78 residential buildings with 616 dwellings and district Sofia - 57 residential buildings with 67 dwellings (Figure 2).

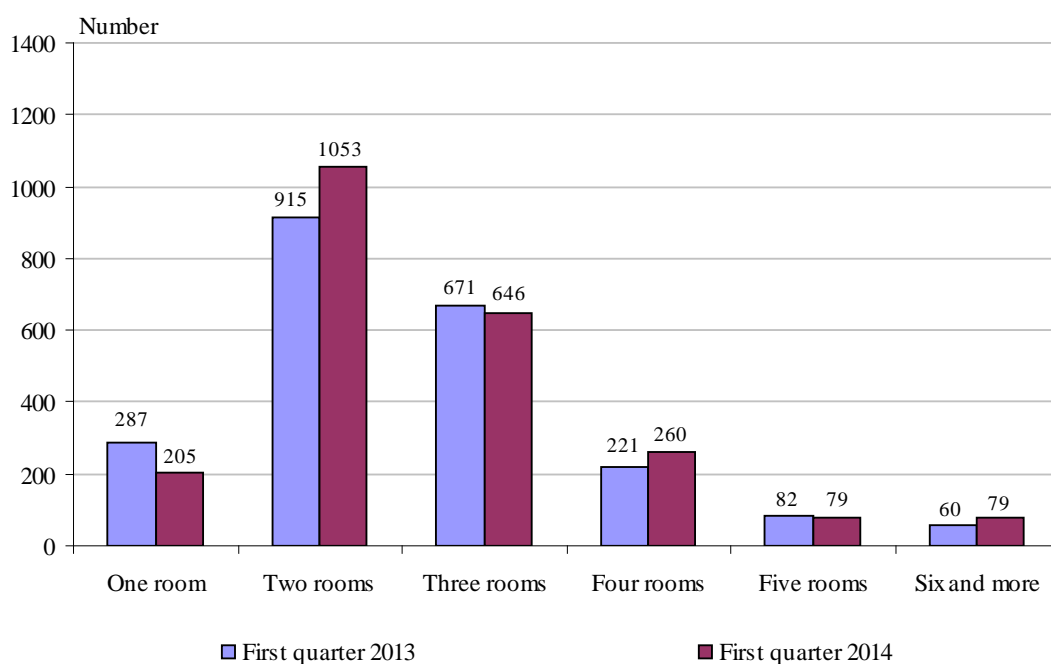
Figure 2. Newly built residential buildings and dwellings completed in the first quarter of 2014 by districts





The largest number of newly built dwellings were with two rooms (45.3%), followed by those with three rooms (27.8%). Compared to the first quarter of 2013 an increase of dwellings with four rooms only was registered. The structure of the housing fund with prevailing share of dwelling with two and three rooms remained unchanged (Figure 3).

Figure 3. Newly built dwellings completed by number of rooms



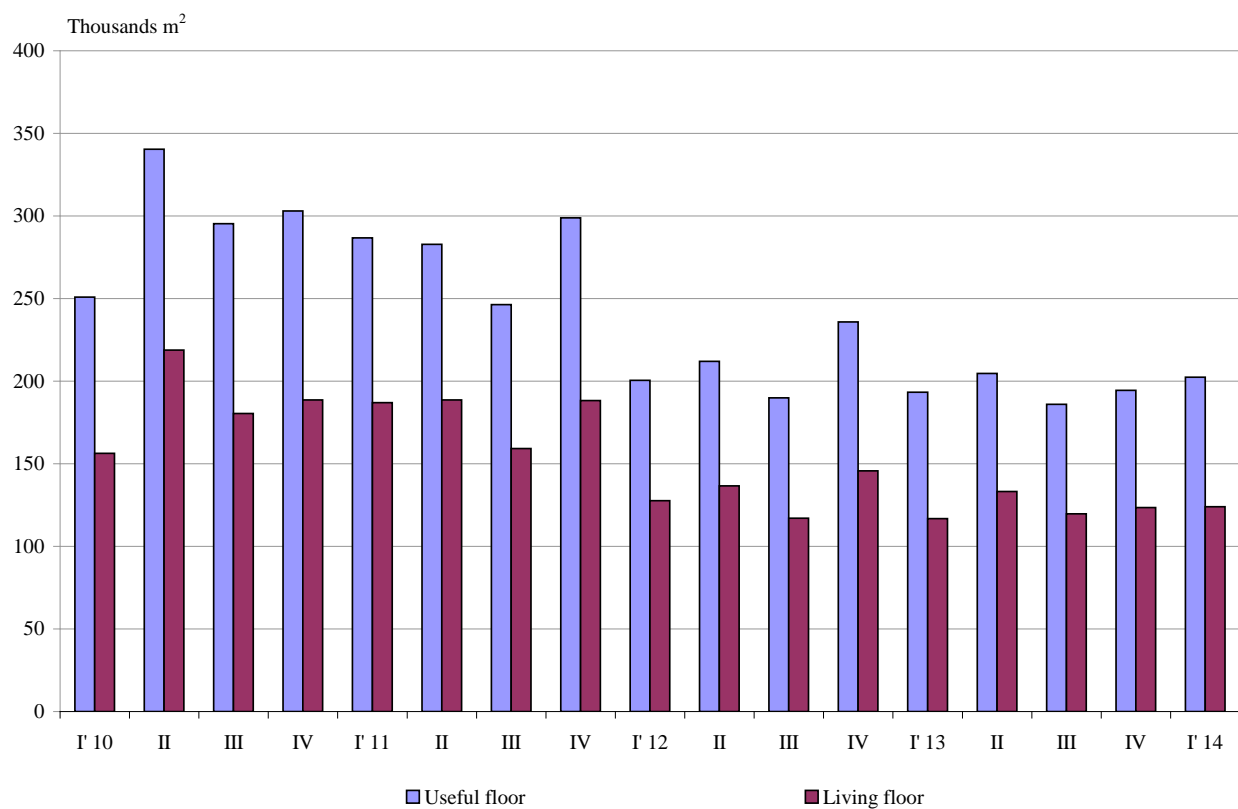
In the first quarter of 2014 **the total useful space** of the newly built dwellings was 202.4 thousand sq. m or by 4.7% more than in the same quarter of 2013. **The living floor** space also has been increased by 6.1% and has reached 124.0 thousand sq. m (Figure 4).

The average useful floor space of the newly built dwelling has increased from 86.4 sq. m in the first quarter of 2013 to 87.2 sq. m in the same quarter of 2014.

The biggest average useful floor space of a newly built dwelling was recorded in the district Silistra - 251.5 sq. m and Ruse - 189.8 sq. m, and the smallest one in the district Dobrich - 64.8 sq. m and district Targovishte - 69.9 sq. m.



Figure 4. Total useful floor space and living floor space of the newly built dwellings completed by quarters





Methodological notes

The statistical data about the newly built residential buildings and dwellings was developed on the basis of the quarterly reports obtained from the municipal administrations.

In the scope of the survey were the newly built residential buildings with approved record of handover of Form 16 or a valid usage license according to Regulation № 2/31.07.2003 of the Ministry of Regional Development and Public Works.

Living floor space is the floor space of living-rooms, bedrooms, recesses for sleeping, dining-rooms, the rooms for day-stay, cabinets and libraries of scientists and drawing-rooms but does not include the space of the kitchens.

Service floor space is the floor space of the rooms and kitchens with less than 4 square meters floor space, vestibules with a portal or an other screen, corridors, bathrooms, toilets, larders, hanging closets, other service rooms such as drying-rooms, laundries or balconies not depending on their space. The space of kitchens with over 4 sq. m. floor space is shown separately.

The useful floor space of the dwelling is sum of the living-floor-space, service floor space and the space of the kitchens.



Annex

Table 1

Newly build residential buildings and dwellings completed in the first quarter of 2014¹

Districts	Newly completed residential buildings and dwellings - in numbers		Useful floor area of newly built dwellings - sq. m			
	Buildings	Dwellings	Total	Living floor space	Service floor space	Area of kitchens
Total for the country	532	2322	202419	124019	62345	16055
Blagoevgrad	1	4	428	360	20	48
Burgas	78	616	45119	28414	12215	4490
Varna	87	821	68050	41074	23883	3093
Veliko Tarnovo	15	17	1808	1148	521	139
Vidin	2	2	200	120	69	11
Vratsa	16	51	7012	4273	2367	372
Gabrovo	1	1	90	50	30	10
Dobrich	24	110	7132	5508	945	679
Kardzhali	19	71	8610	4075	3959	576
Kyustendil	2	4	433	256	146	31
Lovech	14	25	1969	1143	588	238
Montana	-	-	-	-	-	-
Pazardzhik	27	53	5323	3088	1591	644
Pernik	41	61	4298	3173	488	637
Pleven	12	65	5304	3433	1144	727
Plovdiv	42	132	13610	8135	4162	1313
Razgrad	2	3	259	151	60	48
Ruse	17	21	3986	2368	1182	436
Silistra	4	4	1006	542	440	24
Sliven	9	44	4504	2482	1685	337
Smolyan	2	5	426	282	86	58
Sofia	57	67	8240	4999	2062	1179
Sofia capital	8	9	1531	924	484	123
Stara Zagora	9	12	1256	877	221	158
Targovishte	11	48	3356	1820	1374	162
Haskovo	21	51	5194	3264	1615	315
Shumen	5	8	901	476	348	77
Yambol	6	17	2374	1584	660	130

¹ Preliminary data.



Table 2

Newly built residential buildings by type of building

									(Number)
	2012				2013 ¹				2014 ¹
	I quarter	II quarter	III quarter	IV quarter	I quarter	II quarter	III quarter	IV quarter	I quarter
Total	609	552	559	679	551	556	510	582	532
Houses	446	359	381	455	388	391	342	392	367
Bloks of flats	83	93	100	126	97	99	92	88	75
Mixed buildings	28	35	28	43	26	29	21	30	25
Hostels	1	-	-	2	1	2	2	5	8
Country houses	51	64	48	52	39	35	53	62	47
Buildings of institutional households	-	1	2	1	-	-	-	5	10

¹ Preliminary data.