

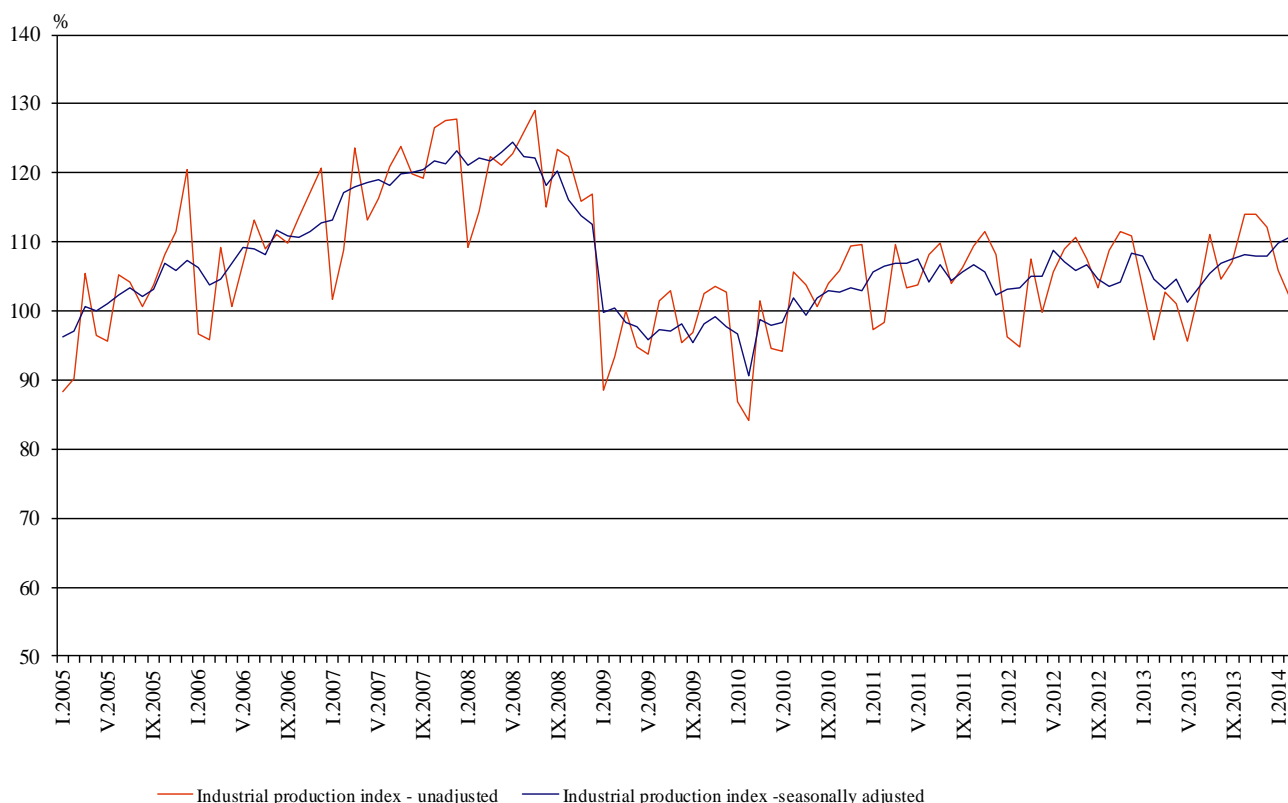


INDUSTRIAL PRODUCTION INDICES IN FEBRUARY 2014¹

The preliminary data showed that the Industrial Production Index², seasonally adjusted³, increased by 0.7% in February 2014 as compared to January 2014.

In February 2014 working day adjusted⁴ Industrial Production Index rose by 6.5% in comparison with the same month of 2013 (that is due to the low production index in February 2013).

Figure 1. Industrial Production Indices (2010=100)



¹ February 2014 data are preliminary.

² Monthly Industrial Production and Industrial turnover indices measure changes in production and turnover values of industrial enterprises. This information can be used to assess the current economic development and for short-term forecasts. Indices do not measure the actual production level, it aims to measure the average change in value of production between two points of time

Indices are compiled on the base of information collected through representative sampling survey on industrial enterprises. The sample covers enterprises with annual turnover more than 97% of total turnover in industry.

Industrial production indices are calculated at constant base year that is to say they are weighted with the structure of the value added at factor costs in the base year.

³ Seasonal adjustment is a statistical method, which eliminates the seasonal component of time series.

⁴ Working day adjustment is an adjustment for variations caused by calendar effects, different number of calendar and working days in the months, national holidays and outliers (for example the presence of more non-working days in May could contribute to the decline in the production in some activities).

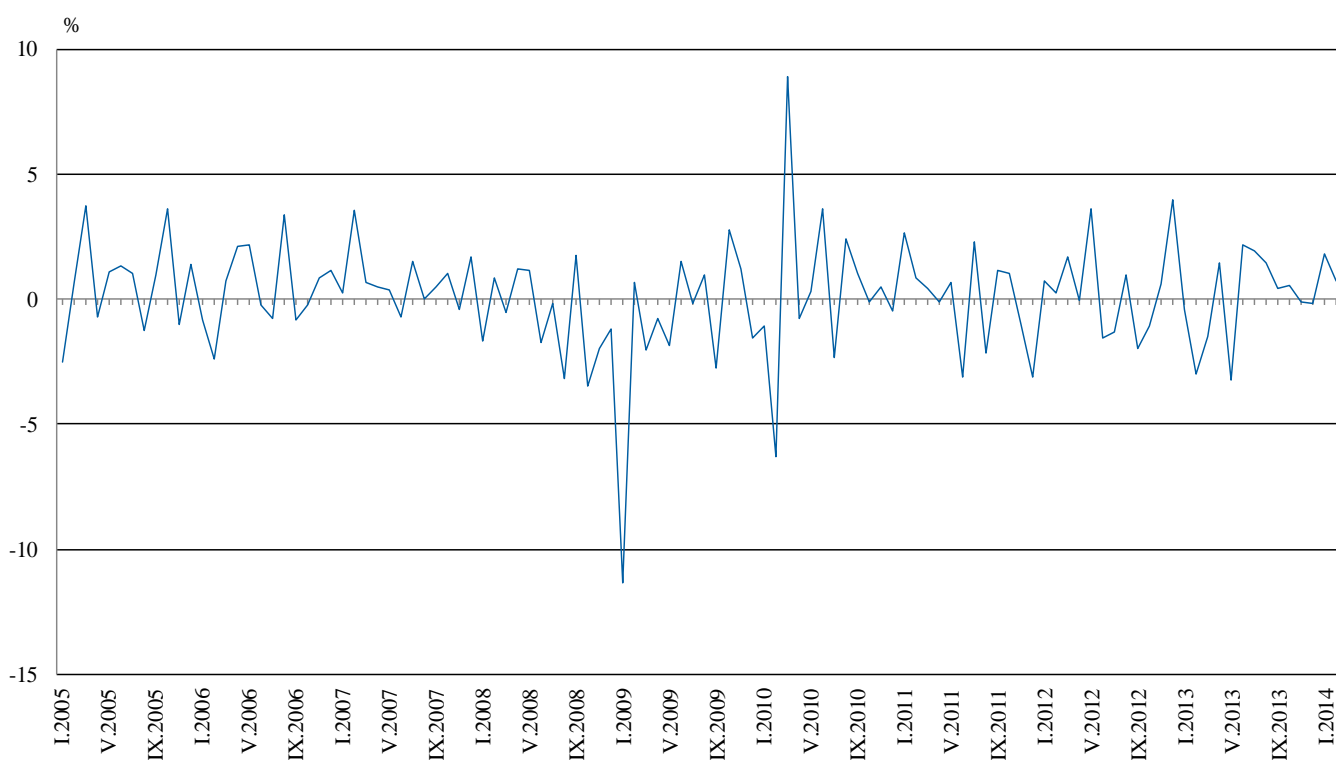


Monthly comparisons

In February 2014 as compared to January 2014, the seasonally adjusted Industrial Production Index increased in the manufacturing by 3.0%, while decreases were registered in the mining and quarrying industry by 16.7% and in the electricity, gas, steam and air conditioning supply by 8.1%.

The most significant increases of production in the manufacturing were registered in the manufacture of beverages by 10.2%, in the manufacture of chemicals and chemical products by 9.1%, in the manufacture of other non-metallic mineral products by 7.9%, in the manufacture of tobacco products by 6.4%, in the manufacture of motor vehicles, trailers and semi-trailers by 5.1%. There was decrease in the manufacture of computer, electronic and optical products by 9.7%, in the manufacture of machinery and equipment by 4.5%, in the manufacture of basic pharmaceutical products and pharmaceutical preparations by 4.1%.

**Figure 2. Changes of Industrial Production Indices compared to the previous month
(Seasonally adjusted)**



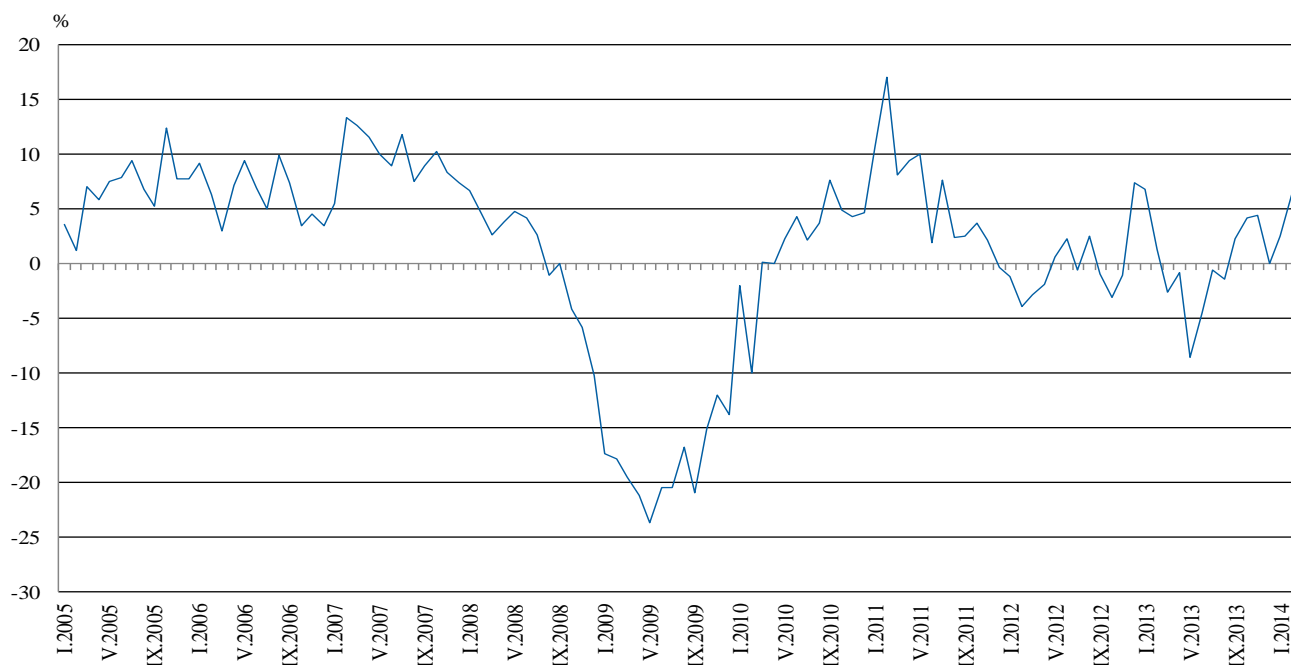


Annual comparisons

On annual basis in February 2014 Industrial Production Index, calculated from working day adjusted data increased in the electricity, gas, steam and air conditioning supply by 8.0% and in the manufacturing by 7.2%, while in the mining and quarrying industry a decrease by 0.2% was seen.

In the manufacturing, the more significant increases compared to the same month of the previous year were seen and in the manufacture of motor vehicles, trailers and semi-trailers by 45.8%, in the manufacture of basic metals by 20.9%, in the manufacture of fabricated metal products, except machinery and equipment by 18.9%, in the manufacture of other non-metallic mineral products by 14.1%, in the manufacture of rubber and plastic products by 13.7%, in the manufacture of wood and of products of wood and cork, except furniture; manufacture of articles of straw and plaiting materials by 12.7%. Decreases were registered in the manufacture of computer, electronic and optical products by 13.4%, in the manufacture of other transport equipment by 6.6%, in the repair and installation of machinery and equipment by 2.9%.

Figure 3. Changes of Industrial Production Indices compared to the same month of the previous year (Working day adjusted)



The final data on Industrial Production and Turnover Indices for January 2014 can be found on the NSI web-site: (<http://www.nsi.bg/otrasalen.php?otr=46>).



Annex

Table 1
Changes of Industrial Production Indices compared to the previous month⁵
(Per cent)

Economic Activities	NACE.BG -2008	2013				2014	
		IX	X	XI	XII	I	II
Industry	B_TO_E36	0.5	0.6	-0.1	-0.2	1.8	0.7
Mining and quarrying	B	-4.6	8.6	0.0	12.2	-3.9	-16.7
of which:							
Mining of coal and lignite	B05	-10.4	21.6	-6.3	12.4	-1.1	-13.8
Mining of metal ores	B07	2.4	0.1	11.4	7.6	-4.8	-17.3
Other mining and quarrying	B08	-8.3	-2.7	-3.1	-13.7	21.2	-0.5
Manufacturing	C	1.0	1.8	0.3	-1.2	2.2	3.0
of which:							
Manufacture of food products	C10	5.3	2.7	3.4	-6.3	0.4	-1.9
Manufacture of beverages	C11	5.5	-7.1	2.0	3.6	-5.6	10.2
Manufacture of tobacco products	C12	4.5	-8.8	-2.7	9.8	2.1	6.4
Manufacture of textiles	C13	3.7	-4.6	-4.9	2.3	11.6	-2.1
Manufacture of wearing apparel	C14	-0.6	-2.9	7.7	-3.0	0.1	-2.3
Manufacture of leather and related products	C15	7.3	-2.3	-6.9	2.7	3.2	2.5
Manufacture of wood and of products of wood and cork, except furniture; manufacture of articles of straw and plaiting materials	C16	5.8	-1.7	7.4	-7.8	14.9	-0.4
Manufacture of paper and paper products	C17	0.5	0.6	1.6	-4.1	5.8	-3.2
Printing and reproduction of recorded media	C18	6.3	-4.1	-2.6	11.3	7.4	-3.4
Manufacture of chemicals and chemical products	C20	-6.6	12.2	3.1	-0.5	-4.4	9.1
Manufacture of basic pharmaceutical products and pharmaceutical preparations	C21	3.6	-4.0	1.8	-0.2	9.0	-4.1
Manufacture of rubber and plastic products	C22	4.7	-1.2	0.5	0.0	11.5	0.7
Manufacture of other non-metallic mineral products	C23	-2.5	-2.7	0.9	0.8	-0.9	7.9
Manufacture of basic metals	C24	-2.1	6.9	-2.0	-5.9	12.4	-2.0
Manufacture of fabricated metal products, except machinery and equipment	C25	2.0	15.7	-11.4	-11.7	13.6	3.8
Manufacture of computer, electronic and optical products	C26	-1.6	20.1	-10.1	-16.9	33.2	-9.7
Manufacture of electrical equipment	C27	-4.8	-0.5	1.9	-5.5	12.1	2.2
Manufacture of machinery and equipment n.e.c.	C28	4.9	1.3	2.7	4.6	0.6	-4.5
Manufacture of motor vehicles, trailers and semi-trailers	C29	12.0	-0.4	5.1	-6.3	28.7	5.1
Manufacture of other transport equipment	C30	-2.1	24.2	0.0	-19.3	15.6	1.7
Manufacture of furniture	C31	0.5	2.0	1.1	-4.5	6.6	-3.0
Other manufacturing	C32	-2.7	9.4	-0.1	-16.2	4.1	12.5
Repair and installation of machinery and equipment	C32	8.1	7.5	-10.3	3.0	4.6	-0.6
Electricity, gas, steam and air conditioning supply	D	0.8	-4.3	-0.6	3.0	5.0	-8.1
Electricity, gas, steam and air conditioning supply	D35	0.8	-4.3	-0.6	3.0	5.0	-8.1

⁵ Seasonally adjusted.



Table 2
Changes of Industrial Production Indices compared to the same month of the previous year⁶
(Per cent)

Economic Activities	NACE.BG 2008	2013				2014	
		IX	X	XI	XII	I	II
Industry	B_TO_E36	2.2	4.2	4.4	0.0	2.5	6.5
Mining and quarrying	B	-13.1	-3.0	33.3	12.8	17.6	-0.2
of which:							
Mining of coal and lignite	B05	-16.6	13.3	25.6	12.3	22.5	13.7
Mining of metal ores	B07	-1.8	-1.6	53.1	15.2	16.8	-6.9
Other mining and quarrying	B08	-13.6	-14.8	-18.3	-19.5	7.6	1.9
Manufacturing	C	1.1	4.8	4.3	0.5	1.1	7.2
of which:							
Manufacture of food products	C10	-1.2	0.7	4.7	-2.2	-3.1	1.6
Manufacture of beverages	C11	7.6	-6.6	2.6	15.8	-13.2	10.3
Manufacture of tobacco products	C12	-8.4	-2.6	3.0	-8.3	-11.2	-1.0
Manufacture of textiles	C13	21.6	11.6	-0.2	-6.4	3.3	12.4
Manufacture of wearing apparel	C14	7.0	4.6	11.9	3.7	1.6	-1.2
Manufacture of leather and related products	C15	-4.5	9.3	-5.9	5.3	-2.1	8.1
Manufacture of wood and of products of wood and cork, except furniture; manufacture of articles of straw and plaiting materials	C16	0.5	-4.9	3.0	-0.8	9.9	12.7
Manufacture of paper and paper products	C17	10.0	18.9	13.8	5.6	14.6	4.7
Printing and reproduction of recorded media	C18	17.0	11.5	-9.1	8.9	17.3	10.5
Manufacture of chemicals and chemical products	C20	-17.7	-2.3	3.2	4.7	-8.8	7.1
Manufacture of basic pharmaceutical products and pharmaceutical preparations	C21	6.6	5.7	10.6	6.8	9.9	6.4
Manufacture of rubber and plastic products	C22	10.4	9.2	2.1	16.4	8.8	13.7
Manufacture of other non-metallic mineral products	C23	10.4	-0.9	-6.3	5.7	-6.5	14.1
Manufacture of basic metals	C24	1.6	21.5	5.7	7.3	-17.4	20.9
Manufacture of fabricated metal products, except machinery and equipment	C25	17.5	27.0	9.7	-9.0	-1.1	18.9
Manufacture of computer, electronic and optical products	C26	-4.9	39.8	-1.2	-9.1	15.0	-13.4
Manufacture of electrical equipment	C27	-6.6	-7.8	-3.7	-20.4	1.9	7.5
Manufacture of machinery and equipment n.e.c.	C28	12.6	15.3	16.2	19.3	17.0	9.1
Manufacture of motor vehicles, trailers and semi-trailers	C29	10.4	16.4	22.1	22.0	48.3	45.8
Manufacture of other transport equipment	C30	-13.7	-17.4	17.5	-29.1	-31.3	-6.6
Manufacture of furniture	C31	0.4	6.2	8.5	0.6	1.9	-1.7
Other manufacturing	C32	2.1	14.7	31.6	3.4	-4.8	6.0
Repair and installation of machinery and equipment	C33	7.9	-9.0	-26.4	-18.1	-2.5	-2.9
Electricity, gas, steam and air conditioning supply	D	13.4	6.3	-4.2	-6.3	0.5	8.0
Electricity, gas, steam and air conditioning supply	D35	13.4	6.3	-4.2	-6.3	0.5	8.0

⁶ Working day adjusted.



Table 3

**Industrial Production Indices
(Seasonally adjusted, 2010=100)**

NACE.BG - 2008 Code	2013											2014	
	II	III	IV	V	VI	VII	VIII	IX	X	XI	XII	I	II
B_TO_E36	104.7	103.1	104.7	101.3	103.4	105.4	107.0	107.5	108.1	108.0	107.8	109.8	110.6
B	95.1	86.0	88.5	89.2	94.2	96.2	103.6	98.8	107.3	107.4	120.4	115.8	96.5
B05	90.0	52.5	79.8	61.3	91.9	81.2	108.6	97.3	118.4	111.0	124.7	123.4	106.3
B07	101.7	96.7	88.3	96.2	91.0	104.5	99.0	101.4	101.5	113.1	121.7	115.8	95.7
B08	104.3	105.2	113.1	111.4	110.5	108.8	118.6	108.8	105.8	102.5	88.5	107.3	106.7
C	107.2	103.8	106.4	103.1	103.5	106.0	105.0	106.0	108.0	108.3	107.0	109.3	112.6
C10	86.8	86.8	90.5	88.0	94.7	93.8	85.6	90.1	92.5	95.7	89.7	90.0	88.4
C11	100.4	96.8	100.8	106.0	105.8	98.1	99.8	105.3	97.8	99.8	103.4	97.6	107.6
C12	123.0	137.4	139.9	121.3	111.1	113.5	109.6	114.6	104.5	101.7	111.7	114.1	121.4
C13	95.3	98.0	100.7	99.0	98.4	96.6	101.5	105.3	100.4	95.5	97.6	109.0	106.7
C14	98.8	94.6	103.9	96.9	97.1	98.1	100.1	99.5	96.6	104.1	100.9	100.9	98.7
C15	74.3	72.7	84.3	76.5	71.4	76.1	75.1	80.6	78.8	73.4	75.3	77.8	79.7
C16	100.5	99.4	103.7	97.0	97.8	97.4	93.1	98.5	96.7	103.9	95.9	110.1	109.7
C17	114.7	118.0	119.7	114.6	115.3	121.5	119.6	120.3	121.1	123.0	117.9	124.7	120.7
C18	98.7	99.6	115.5	111.4	99.2	104.9	95.1	101.0	96.9	94.3	105.0	112.8	109.0
C20	97.1	94.1	99.6	102.2	95.6	99.2	92.4	86.4	96.9	99.9	99.4	95.0	103.7
C21	133.3	131.1	136.3	136.1	123.4	133.5	133.9	138.8	133.2	135.7	135.4	147.5	141.5
C22	114.0	104.8	111.0	110.9	107.6	111.3	110.2	115.4	114.0	114.5	114.6	127.8	128.7
C23	107.5	108.1	116.9	110.5	106.0	107.9	116.6	113.7	110.6	111.6	112.5	111.5	120.3
C24	90.9	93.0	94.0	96.1	89.7	100.8	101.9	99.8	106.7	104.5	98.4	110.5	108.3
C25	98.6	100.1	101.5	99.5	107.5	110.6	107.0	109.2	126.4	111.9	98.8	112.2	116.5
C26	145.5	112.2	127.1	125.6	108.6	127.0	120.2	118.4	142.2	127.7	106.1	141.3	127.6
C27	125.3	121.1	121.5	115.0	122.3	118.5	125.4	119.3	118.8	121.1	114.4	128.2	131.0
C28	130.0	135.9	133.6	129.1	125.3	131.4	130.3	136.8	138.6	142.4	148.9	149.8	143.2
C29	101.3	97.5	99.2	94.3	106.0	111.2	96.8	108.5	108.1	113.6	106.5	137.1	144.0
C30	90.1	72.0	93.8	62.1	71.4	72.7	70.7	69.2	85.9	85.9	69.3	80.1	81.5
C31	124.4	117.0	121.6	111.9	116.3	115.3	119.8	120.4	122.8	124.1	118.5	126.3	122.5
C32	145.8	151.7	145.4	138.3	151.8	152.5	147.3	143.3	156.8	156.7	131.2	136.6	153.7
C33	82.8	78.5	81.5	76.1	70.6	73.5	72.5	78.4	84.3	75.6	77.9	81.5	81.0
D	99.8	105.7	98.2	97.2	107.1	114.2	114.5	115.4	110.4	109.8	113.1	118.7	109.0
D35	99.8	105.7	98.2	97.2	107.1	114.2	114.5	115.4	110.4	109.8	113.1	118.7	109.0



Table 4

**Industrial Production Indices
(Working day adjusted, 2010=100)**

NACE.BG - 2008 Code	2011	2012	2013												2014	
	II	II	II	III	IV	V	VI	VII	VIII	IX	X	XI	XII	I	II	
B_TO_E36	98.4	94.6	95.9	103.2	100.4	96.4	104.8	110.2	104.4	107.5	112.5	114.8	113.9	105.1	102.1	
B	91.4	100.9	89.0	83.2	82.5	84.1	90.1	95.7	101.7	101.8	121.8	117.1	131.6	109.9	88.8	
B05	114.0	107.7	86.9	54.0	55.5	40.1	72.6	72.4	106.9	101.9	145.9	125.6	145.0	135.2	98.8	
B07	68.4	102.5	91.7	96.9	92.9	101.1	96.7	103.8	96.2	99.0	108.2	113.3	129.6	102.3	85.4	
B08	79.0	55.8	75.1	97.1	113.5	122.4	119.1	120.0	129.7	119.1	122.3	114.5	89.0	67.6	76.5	
C	91.6	86.8	92.8	103.2	106.9	105.0	111.3	113.7	104.0	109.0	114.5	114.1	103.1	94.2	99.5	
C10	87.3	86.2	74.5	85.1	86.8	86.2	97.3	95.1	88.4	97.7	102.0	102.5	94.1	75.8	75.7	
C11	71.7	58.5	63.9	88.1	98.0	120.9	132.5	122.0	123.9	118.3	88.9	90.5	107.9	60.7	70.4	
C12	74.2	99.9	93.5	141.5	139.0	137.2	138.8	136.7	114.8	126.7	94.5	90.2	103.3	81.6	92.6	
C13	104.4	82.1	91.7	109.2	111.6	111.2	111.3	101.2	81.6	101.4	100.3	98.8	85.1	92.7	103.1	
C14	102.9	92.2	98.8	91.6	98.7	88.7	103.6	112.7	99.9	95.7	92.3	104.8	101.5	102.9	97.6	
C15	94.7	80.0	72.0	72.7	71.8	66.6	75.5	92.1	74.7	88.1	83.0	72.7	69.0	77.5	77.8	
C16	91.1	64.3	80.2	95.4	102.3	97.5	107.3	109.0	96.2	107.1	108.6	113.3	87.7	88.8	90.5	
C17	104.4	83.9	108.3	124.8	126.2	120.5	121.8	129.7	118.4	118.5	116.7	117.5	111.0	117.0	113.4	
C18	88.4	81.9	87.1	94.4	111.9	108.2	103.9	105.3	98.0	106.5	105.1	100.6	116.9	93.5	96.3	
C20	121.2	98.5	91.2	103.8	103.2	102.8	99.2	100.0	86.8	86.3	94.5	103.3	98.4	88.4	97.7	
C21	104.3	119.8	134.3	135.7	135.4	136.5	134.9	124.6	128.9	142.2	142.8	139.4	131.5	123.5	142.9	
C22	90.5	78.7	95.8	104.4	108.8	110.7	116.2	122.5	113.3	123.3	127.3	122.2	102.0	103.8	109.0	
C23	85.3	66.3	84.6	104.9	122.9	119.5	116.5	116.8	123.8	124.6	125.2	121.1	94.7	78.6	96.5	
C24	98.1	104.5	88.4	89.8	105.4	100.9	86.5	116.8	94.6	92.0	118.2	116.8	72.6	114.1	106.9	
C25	82.2	82.7	86.0	102.5	101.0	98.2	114.3	115.3	105.6	110.8	132.8	119.8	112.4	83.4	102.3	
C26	104.2	113.0	132.8	114.4	126.1	125.4	113.7	126.5	105.8	121.4	142.8	135.4	123.1	124.8	115.1	
C27	101.4	99.1	112.9	119.2	120.1	109.7	134.0	126.3	113.0	122.4	129.7	133.8	110.0	116.3	121.3	
C28	103.8	116.4	124.2	149.1	133.5	130.1	137.2	139.8	118.5	136.2	142.2	147.0	143.1	129.4	135.5	
C29	84.1	77.2	96.1	100.5	102.4	96.2	114.3	113.5	82.9	111.9	117.2	123.3	91.6	129.7	140.2	
C30	77.8	110.3	77.7	73.8	88.2	77.7	86.7	71.6	63.9	65.2	82.0	79.4	74.8	53.6	72.6	
C31	94.4	86.5	108.1	116.3	116.4	109.9	122.2	118.6	120.8	124.0	135.2	135.1	124.2	106.5	106.3	
C32	96.4	89.6	125.3	150.4	141.0	141.4	172.9	153.3	149.9	153.5	185.1	165.5	114.9	109.8	132.8	
C33	82.9	87.4	71.6	77.7	74.7	70.7	71.3	71.2	71.6	80.8	89.9	83.8	110.3	56.6	69.5	
D	123.4	118.9	110.3	115.2	87.8	78.0	92.8	107.1	106.3	104.0	105.1	118.9	139.7	139.5	119.1	
D35	123.4	118.9	110.3	115.2	87.8	78.0	92.8	107.1	106.3	104.0	105.1	118.9	139.7	139.5	119.1	