

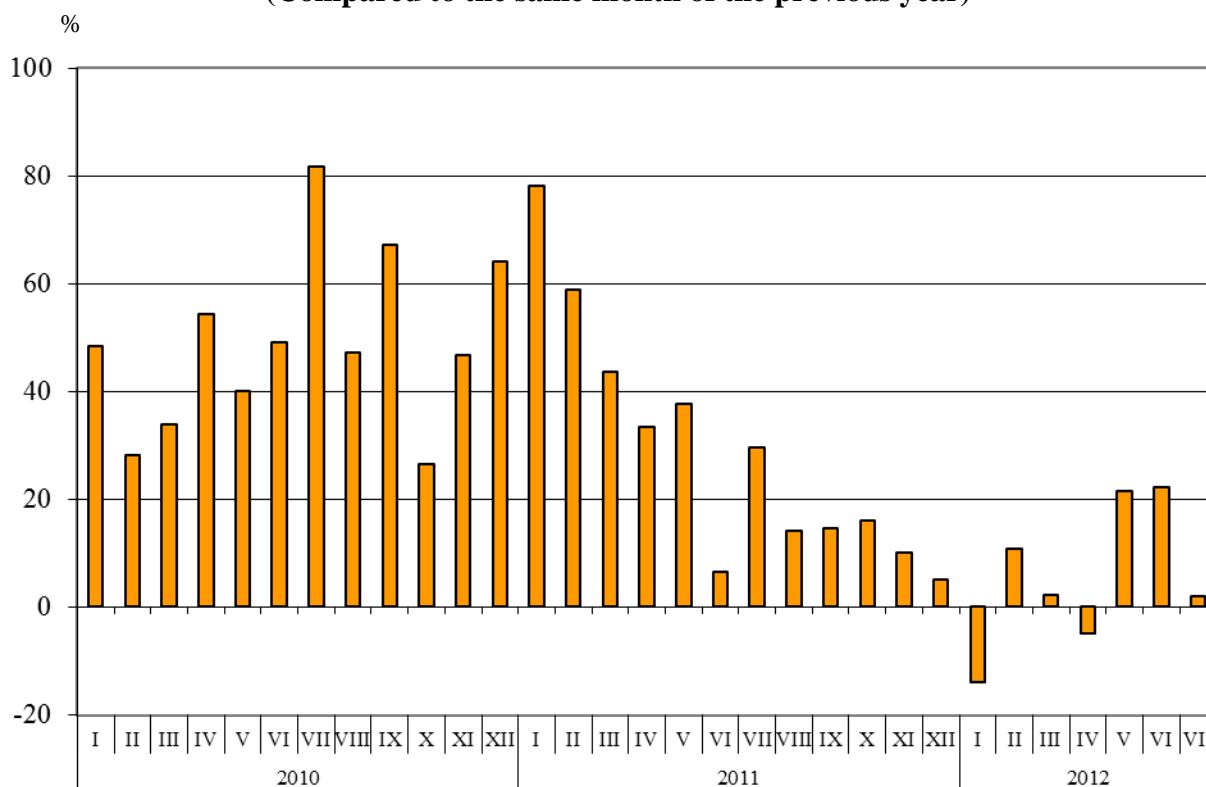


## BULGARIAN TRADE WITH THIRD COUNTRIES FOR THE PERIOD JANUARY - JULY 2012 (PRELIMINARY DATA)

In the period **January - July 2012** the Bulgarian **exports to third countries** increased by 5.3% compared to the corresponding period of the previous year and amounted to 9.2 Billion Levs (Annex, Table 1 and 2). The main trade partners of Bulgaria were Turkey, China, Russia, Serbia and The FYR of Macedonia that formed 46.8% of the exports to non EU countries (Annex, Table 3). The exports to United Arab Emirates, Israel, Syria, China and Canada increased significantly while the most significant falls were reported on the exports to Singapore, Iran, India and Croatia.

In July 2012 the exports to third countries increased by 1.9% compared to the corresponding month of the previous year and amounted to 1.4 Billion Levs.

**Figure 1. Nominal value<sup>1</sup> change of exports to non EU countries  
for the period 2010 – 2012  
(Compared to the same month of the previous year)**



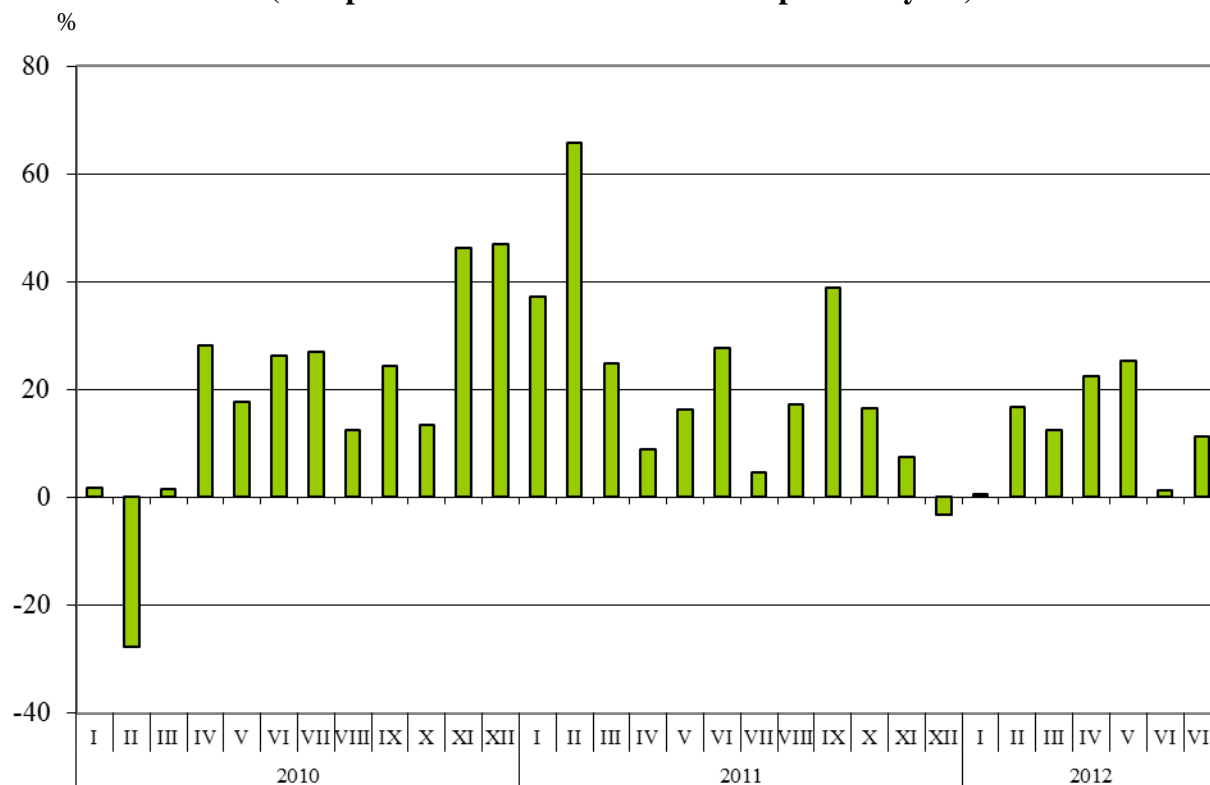
**Bulgarian imports from third countries in the first seven months of 2012** increased by 12.9% compared to the corresponding period of the previous year and added up to 11.9 Billion Levs (at CIF prices) (Annex, Tables 1 and 2). The most significant growths were reported on the imports from Bosnia and Herzegovina, Peru and Brazil (Annex, Table 3) while the largest decreases were observed in the imports from Israel and Kazakhstan.

In July 2012 the Bulgarian imports from third countries grew by 11.4% compared to the corresponding month of the previous year and amounted to 1.7 Billion Levs.

<sup>1</sup> Value changes at current prices.



**Figure 2. Nominal value<sup>1</sup> change of imports to non EU countries  
for the period 2010 – 2012  
(Compared to the same month of the previous year)**



**The foreign trade balance** of Bulgaria (export FOB - import CIF) **with third countries** in the period January - July 2012 was negative and added up to 2 651.3 Million Levs (Annex, Table 1). The trade balance at FOB /FOB prices (after elimination of transport and insurance costs on imports) was also negative and amounted to 2 117.4 Million Levs.

In July 2012 the foreign trade balance of Bulgaria (export FOB - import CIF) with third countries was negative and amounted to 278.3 Million Levs.

In the first seven months of 2012 compared to the corresponding period of the previous year the largest growths in the **exports of Bulgaria to third countries** distributed according to the Standard International Trade Classification (Annex, Table 4) were recorded in the sections “Beverages and tobacco”, “Food and live animals” and “Animal and vegetable oils, fats and waxes”<sup>2</sup>. Falls were observed in the sections

“Manufactured goods classified chiefly by material”<sup>3</sup>, “Machinery and transport equipment” and “Miscellaneous manufactured articles”<sup>1</sup>.

<sup>1</sup> Value changes at current prices.

<sup>2</sup> The section includes the following divisions: animal oils and fats; fixed vegetable fats and oils, crude, refined or fractionated; animal or vegetable fats and oils, processed; waxes of animal or vegetable origin; inedible mixtures or preparations of animal or vegetable fats or oils, n.e.s.

<sup>3</sup> The section includes the following divisions: leather, leather manufactures, n.e.s. and dressed furskins; rubber manufactures, n.e.s.; cork and wood manufactures (excluding furniture); paper, paperboard and articles of paper pulp, of paper or of paperboard; textile yarn, fabrics, made-up articles, n.e.s., and related products; non-metallic mineral manufactures, n.e.s.; iron and steel; non-ferrous metals; manufactures of metals, n.e.s.

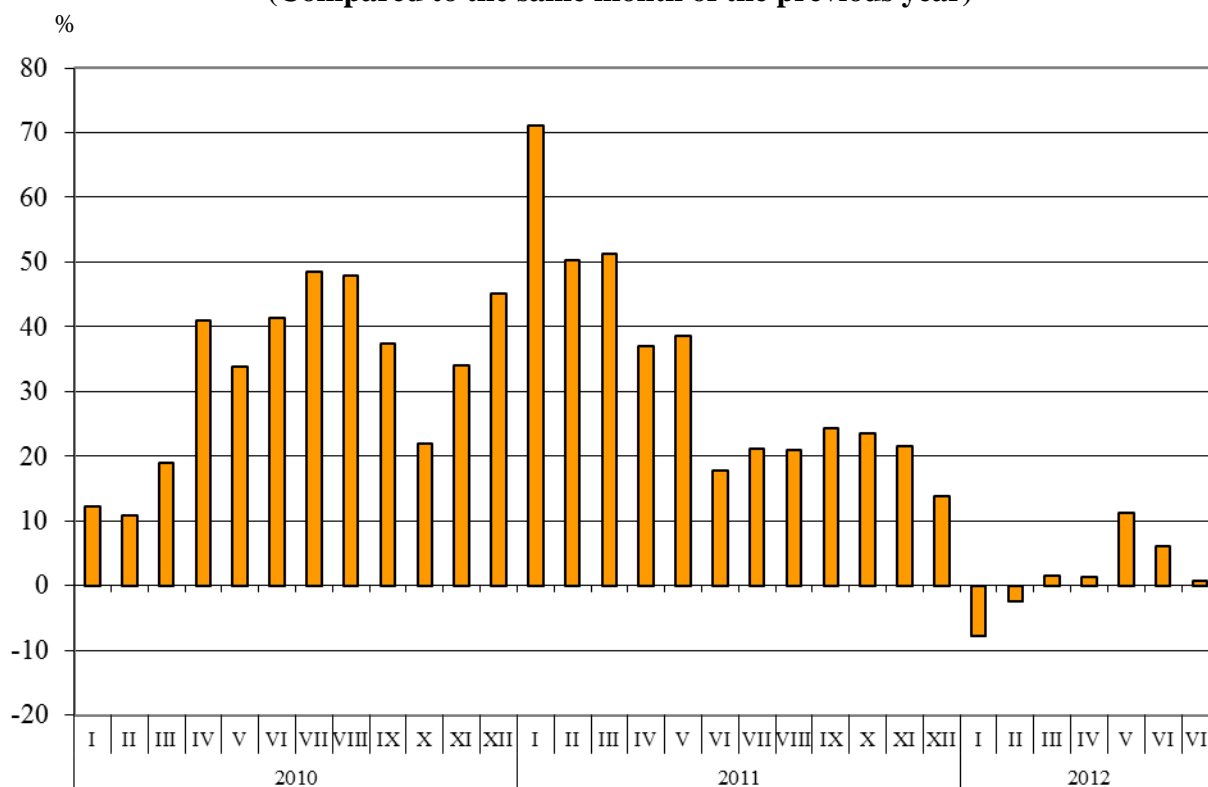
The largest growth in **imports from third countries** was reported in section “Machinery and transport equipment”. Fall was observed in section “Food and live animals”.

### Bulgarian trade with third countries and EU - total

**In the first seven months of 2012** the value of **all exported goods** from Bulgaria amounted to 23.0 Billion Levs and compared to the corresponding period of 2011 the exports increased by 1.7% (Annex, Table 1 and 2).

In July 2012 the total exports added up to 3.6 Billion Levs and grew by 0.8% compared to the corresponding month of the previous year.

**Figure 3. Nominal value<sup>2</sup> change of exports for the period 2010 – 2012**  
(Compared to the same month of the previous year)



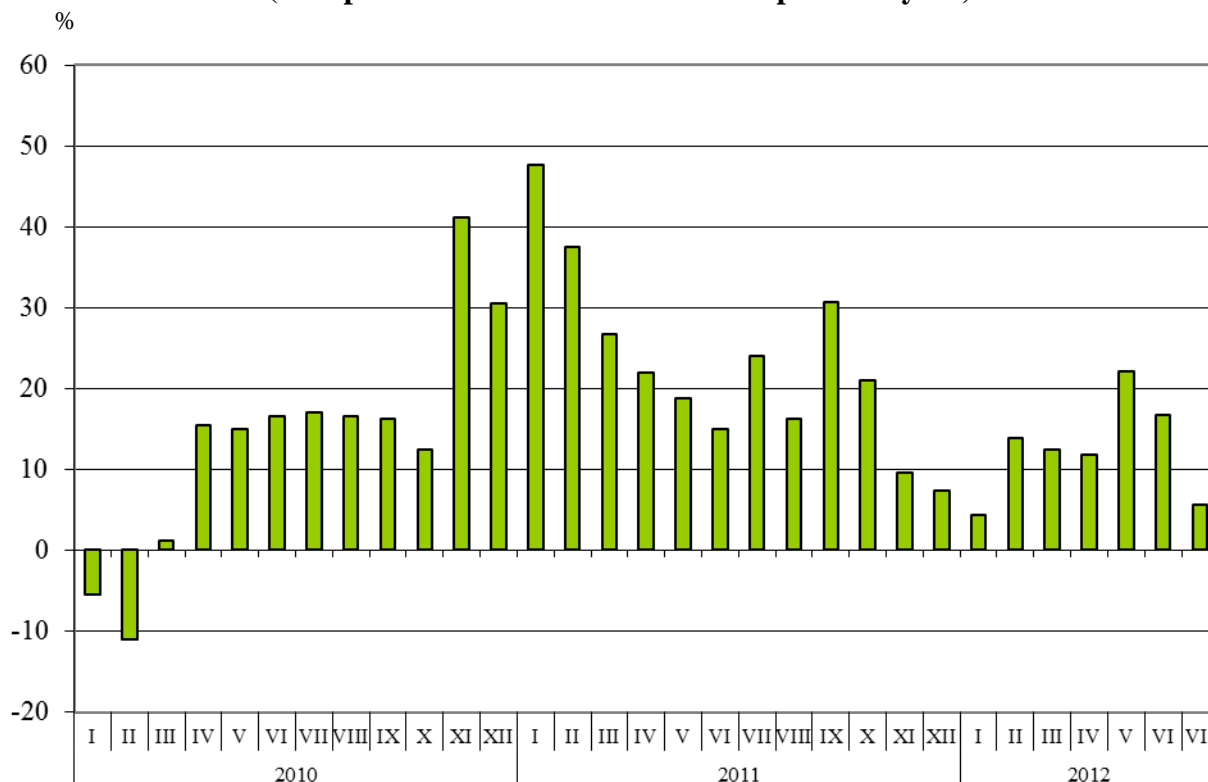
<sup>1</sup> The section includes the following divisions: prefabricated buildings; sanitary, plumbing, heating and lightning fixtures and fittings, n.e.s.; furniture and parts thereof; bedding, mattresses, mattress supports, cushions and similar stuffed furnishings; travel goods, handbags and similar containers; articles of apparel and clothing accessories; footwear; professional, scientific and controlling instruments and apparatus, n.e.s.; photographic apparatus, equipment and supplies and optical goods, n.e.s.; watches and clocks; miscellaneous manufactured articles, n.e.s.

<sup>2</sup> Value changes at current prices.

The total value of **all the goods imported in the country in the period January - July 2012** amounted to 29.0 Billion Levs (at CIF prices), or by 12.5% more than the corresponding period of the previous year (Annex, Table 1 and 2).

In July 2012 the total imports increased by 5.7% compared to July 2011 and added up to 4.3 Billion Levs.

**Figure 4. Nominal value<sup>1</sup> change of imports for the period 2010 – 2012  
(Compared to the same month of the previous year)**



The **total foreign trade balance** (exports FOB - import CIF) was negative in the period January – July 2012 and amounted to 5 962.9 Million Levs which was 2 832.3 Million Levs more than the balance in the first seven months of 2011 (Annex, Table 1 and 2). At FOB/FOB prices (after elimination of transport and insurance costs on imports) in the period January – July 2012 the total foreign trade balance was also negative and amounted to 4 727.3 Million Levs.

In July 2012 the total foreign trade balance (exports FOB - import CIF) was negative and added up to 651.8 Million Levs. The trade balance at FOB/FOB prices was also negative and amounted to 447.0 Million Levs.

<sup>1</sup> Value changes at current prices.

Annex

Table 1

Exports, imports and trade balance for the period January - July 2011 and 2012<sup>1</sup> by months

(Million Levs)

Months/ Periods	Exports - FOB			Imports - CIF			Imports - FOB <sup>2</sup>			Trade balance - FOB/CIF			Trade balance - FOB/FOB <sup>2</sup>		
	Total	EU	Non EU	Total	EU	Non EU	Total	EU	Non EU	Total	EU	Non EU	Total	EU	Non EU
I.2011	3054.5	1789.0	1265.5	3353.1	1987.0	1366.1	3211.1	1907.9	1303.2	-298.6	-198.0	-100.6	-156.6	-118.9	-37.7
II.2011	2935.1	1840.9	1094.2	3168.3	1898.6	1269.7	3041.6	1827.9	1213.7	-233.2	-57.7	-175.5	-106.5	13.0	-119.5
III.2011	3320.2	2027.1	1293.1	3772.8	2284.2	1488.6	3613.6	2193.5	1420.1	-452.6	-257.1	-195.5	-293.4	-166.4	-127.0
<b>I - III.2011</b>	<b>9309.8</b>	<b>5657.0</b>	<b>3652.8</b>	<b>10294.2</b>	<b>6169.8</b>	<b>4124.4</b>	<b>9866.3</b>	<b>5929.3</b>	<b>3937.0</b>	<b>-984.4</b>	<b>-512.8</b>	<b>-471.6</b>	<b>-556.5</b>	<b>-272.3</b>	<b>-284.2</b>
IV.2011	3144.3	1850.8	1293.5	3815.2	2226.2	1589.0	3652.4	2137.7	1514.7	-670.9	-375.4	-295.5	-508.1	-286.9	-221.2
V.2011	3283.6	2041.0	1242.6	3817.6	2238.1	1579.5	3659.2	2153.0	1506.2	-534.0	-197.1	-336.9	-375.6	-112.0	-263.6
VI.2011	3256.6	2067.1	1189.5	3749.3	2035.1	1714.2	3591.2	1958.4	1632.8	-492.7	32.0	-524.7	-334.6	108.7	-443.3
<b>IV - VI.2011</b>	<b>9684.5</b>	<b>5958.9</b>	<b>3725.6</b>	<b>11382.1</b>	<b>6499.4</b>	<b>4882.7</b>	<b>10902.8</b>	<b>6249.1</b>	<b>4653.7</b>	<b>-1697.6</b>	<b>-540.5</b>	<b>-1157.1</b>	<b>-1218.3</b>	<b>-290.2</b>	<b>-928.1</b>
<b>I - VI.2011</b>	<b>18994.3</b>	<b>11615.9</b>	<b>7378.4</b>	<b>21676.3</b>	<b>12669.2</b>	<b>9007.1</b>	<b>20769.1</b>	<b>12178.4</b>	<b>8590.7</b>	<b>-2682.0</b>	<b>-1053.3</b>	<b>-1628.7</b>	<b>-1774.8</b>	<b>-562.5</b>	<b>-1212.3</b>
VII.2011	3618.8	2235.9	1382.9	4067.4	2551.8	1515.6	3893.6	2449.2	1444.4	-448.6	-315.9	-132.7	-274.8	-213.3	-61.5
<b>I - VII.2011</b>	<b>22613.1</b>	<b>13851.8</b>	<b>8761.3</b>	<b>25743.7</b>	<b>15221.0</b>	<b>10522.7</b>	<b>24662.7</b>	<b>14627.6</b>	<b>10035.1</b>	<b>-3130.6</b>	<b>-1369.2</b>	<b>-1761.4</b>	<b>-2049.6</b>	<b>-775.8</b>	<b>-1273.8</b>
I.2012	2813.5	1725.2	1088.3	3500.8	2128.5	1372.3	3355.9	2042.7	1313.2	-687.3	-403.3	-284.0	-542.4	-317.5	-224.9
II.2012	2863.2	1650.6	1212.6	3605.8	2123.7	1482.1	3457.0	2042.0	1415.0	-742.6	-473.1	-269.5	-593.8	-391.4	-202.4
III.2012	3369.4	2046.9	1322.5	4244.7	2570.4	1674.3	4070.5	2469.7	1600.8	-875.3	-523.5	-351.8	-701.1	-422.8	-278.3
<b>I - III.2012</b>	<b>9046.1</b>	<b>5422.7</b>	<b>3623.4</b>	<b>11351.3</b>	<b>6822.6</b>	<b>4528.7</b>	<b>10883.4</b>	<b>6554.4</b>	<b>4329.0</b>	<b>-2305.2</b>	<b>-1399.9</b>	<b>-905.3</b>	<b>-1837.3</b>	<b>-1131.7</b>	<b>-705.6</b>
IV.2012	3187.2	1957.1	1230.1	4267.1	2321.8	1945.3	4086.5	2233.3	1853.2	-1079.9	-364.7	-715.2	-899.3	-276.2	-623.1
V.2012	3653.2	2142.5	1510.7	4661.7	2683.1	1978.6	4464.2	2576.4	1887.8	-1008.5	-540.6	-467.9	-811.0	-433.9	-377.1
VI.2012	3456.0	2002.6	1453.4	4373.5	2635.5	1738.0	4188.7	2527.7	1661.0	-917.5	-632.9	-284.6	-732.7	-525.1	-207.6
<b>IV - VI.2012</b>	<b>10296.4</b>	<b>6102.2</b>	<b>4194.2</b>	<b>13302.3</b>	<b>7640.4</b>	<b>5661.9</b>	<b>12739.4</b>	<b>7337.4</b>	<b>5402.0</b>	<b>-3005.9</b>	<b>-1538.2</b>	<b>-1467.7</b>	<b>-2443.0</b>	<b>-1235.2</b>	<b>-1207.8</b>
<b>I - VI.2012</b>	<b>19342.5</b>	<b>11524.9</b>	<b>7817.6</b>	<b>24653.6</b>	<b>14463.0</b>	<b>10190.6</b>	<b>23622.8</b>	<b>13891.8</b>	<b>9731.0</b>	<b>-5311.1</b>	<b>-2938.1</b>	<b>-2373.0</b>	<b>-4280.3</b>	<b>-2366.9</b>	<b>-1913.4</b>
VII.2012	3646.0	2236.6	1409.4	4297.8	2610.1	1687.7	4093.0	2479.6	1613.4	-651.8	-373.5	-278.3	-447.0	-243.0	-204.0
<b>I - VII.2012</b>	<b>22988.5</b>	<b>13761.5</b>	<b>9227.0</b>	<b>28951.4</b>	<b>17073.1</b>	<b>11878.3</b>	<b>27715.8</b>	<b>16371.4</b>	<b>11344.4</b>	<b>-5962.9</b>	<b>-3311.6</b>	<b>-2651.3</b>	<b>-4727.3</b>	<b>-2609.9</b>	<b>-2117.4</b>

<sup>1</sup> Data are preliminary as of 10.09.2012.

<sup>2</sup> By data of BNB for the transport costs.



Table 2

Value changes of exports and imports for the period January - July 2012<sup>1</sup> compared to the same period of the previous year

(Per cent)

Months/Periods	Exports - FOB			Imports - CIF			Imports - FOB		
	Total	EU	Non EU	Total	EU	Non EU	Total	EU	Non EU
I	-7.9	-3.6	-14.0	4.4	7.1	0.5	4.5	7.1	0.8
II	-2.4	-10.3	10.8	13.8	11.9	16.7	13.7	11.7	16.6
III	1.5	1.0	2.3	12.5	12.5	12.5	12.6	12.6	12.7
<b>I-III</b>	<b>-2.8</b>	<b>-4.1</b>	<b>-0.8</b>	<b>10.3</b>	<b>10.6</b>	<b>9.8</b>	<b>10.3</b>	<b>10.5</b>	<b>10.0</b>
IV	1.4	5.7	-4.9	11.8	4.3	22.4	11.9	4.5	22.3
V	11.3	5.0	21.6	22.1	19.9	25.3	22.0	19.7	25.3
VI	6.1	-3.1	22.2	16.6	29.5	1.4	16.6	29.1	1.7
<b>IV - VI</b>	<b>6.3</b>	<b>2.4</b>	<b>12.6</b>	<b>16.9</b>	<b>17.6</b>	<b>16.0</b>	<b>16.8</b>	<b>17.4</b>	<b>16.1</b>
<b>I - VI</b>	<b>1.8</b>	<b>-0.8</b>	<b>6.0</b>	<b>13.7</b>	<b>14.2</b>	<b>13.1</b>	<b>13.7</b>	<b>14.1</b>	<b>13.3</b>
VII	0.8	0.0	1.9	5.7	2.3	11.4	5.1	1.2	11.7
<b>I - VII</b>	<b>1.7</b>	<b>-0.7</b>	<b>5.3</b>	<b>12.5</b>	<b>12.2</b>	<b>12.9</b>	<b>12.4</b>	<b>11.9</b>	<b>13.0</b>

<sup>1</sup> Data are preliminary as of 10.09.2012.



**Table 3**

**Exports, imports and trade balance with main non EU partner countries<sup>1</sup> for the period  
January - July 2011 and 2012<sup>2</sup>**

Countries	Exports - FOB			Imports - CIF			Trade balance - FOB/CIF	
	2011	2012	Change compared to the same period of the previous year - %	2011	2012	Change compared to the same period of the previous year - %	2011	2012
	Million Levs			Million Levs			Million Levs	
Third countries -total	8761.3	9227.0	5.3	10522.7	11878.3	12.9	-1761.4	-2651.3
of which:								
Albania	51.7	54.8	6.0	20.6	22.6	9.7	31.1	32.2
Bosnia and Herzegovina	46.6	38.3	-17.8	6.3	16.3	158.7	40.3	22.0
Brazil	42.8	61.0	42.5	85.4	193.6	126.7	-42.6	-132.6
Canada	67.1	126.3	88.2	49.7	56.3	13.3	17.4	70.0
China	326.9	649.5	98.7	699.7	967.4	38.3	-372.8	-317.9
Croatia	130.8	73.7	-43.7	32.1	34.1	6.2	98.7	39.6
Egypt	171.5	144.0	-16.0	29.6	54.2	83.1	141.9	89.8
FYR of Macedonia	516.9	452.6	-12.4	295.0	289.9	-1.7	221.9	162.7
Georgia	198.7	258.2	29.9	218.9	193.9	-11.4	-20.2	64.3
India	100.5	38.6	-61.6	69.6	83.7	20.3	30.9	-45.1
Indonesia	11.4	16.9	48.2	22.8	24.7	8.3	-11.4	-7.8
Iran	66.8	19.0	-71.6	4.1	7.2	75.6	62.7	11.8
Israel	48.8	129.2	164.8	197.2	66.1	-66.5	-148.4	63.1
Japan	28.0	26.5	-5.4	74.6	78.4	5.1	-46.6	-51.9
Kazakhstan	22.7	34.8	53.3	109.3	41.2	-62.3	-86.6	-6.4
Korea, Rep. of	107.9	144.6	34.0	130.3	119.2	-8.5	-22.4	25.4
Norway	31.0	37.2	20.0	9.5	8.2	-13.7	21.5	29.0
Peru	2.7	2.7	0.0	37.9	93.6	147.0	-35.2	-90.9
Russian Fed.	584.5	597.5	2.2	4583.8	5799.2	26.5	-3999.3	-5201.7
Serbia	562.0	523.7	-6.8	276.3	268.5	-2.8	285.7	255.2
Singapore	69.2	8.2	-88.2	16.7	16.7	0.0	52.5	-8.5
South Africa	120.5	83.3	-30.9	21.4	41.6	94.4	99.1	41.7
Switzerland	137.3	167.8	22.2	205.8	223.6	8.6	-68.5	-55.8
Syria	12.0	29.8	148.3	44.0	42.6	-3.2	-32.0	-12.8
Taiwan	27.0	30.1	11.5	63.6	80.0	25.8	-36.6	-49.9
Turkey	2154.6	2097.2	-2.7	1257.2	1349.3	7.3	897.4	747.9
Ukraine	262.8	208.3	-20.7	1056.8	719.1	-32.0	-794.0	-510.8
United Arab Emirates	36.0	171.6	376.7	58.9	90.5	53.7	-22.9	81.1
USA	303.4	356.3	17.4	230.8	207.2	-10.2	72.6	149.1
Viet-Nam	13.2	14.3	8.3	19.8	36.2	82.8	-6.6	-21.9

1 Partner country:

- In case of exports (or dispatches) is the country (or Member State) of final destination of the goods
- In case of imports (or arrivals) is the country (or Member State) of consignment of the goods.

2 Data are preliminary as of 10.09.2012.



**Table 4**

**Exports, imports and trade balance with non EU countries by sections of SITC, rev.4 for the period January - July 2011 and 2012<sup>1</sup>**

Sections by SITC	Exports - FOB			Imports - CIF			Trade balance - FOB/CIF	
	2011	2012	Change compared to the same period of the previous year - %	2011	2012	Change compared to the same period of the previous year - %	2011	2012
	Million Levs			Million Levs			Million Levs	
Third countries -total	8761.3	9227.0	5.3	10522.7	11878.3	12.9	-1761.4	-2651.3
Food and live animals	446.7	542.9	21.5	339.9	277.4	-18.4	106.8	265.5
Beverages and tobacco	238.0	319.0	34.0	75.5	99.8	32.2	162.5	219.2
Crude materials, inedible (except fuel)	939.6	1108.2	17.9	956.1	1060.2	10.9	-16.5	48.0
Mineral fuel, lubricants and related materials	2524.3	2593.4	2.7	5209.4	5896.2	13.2	-2685.1	-3302.8
Animals and vegetable oils, fats and waxes	34.5	41.8	21.2	27.1	35.4	30.6	7.4	6.4
Chemical and related products n.e.c.	959.1	1040.1	8.4	654.0	737.5	12.8	305.1	302.6
Manufactured goods classified chiefly by material	2038.7	1996.1	-2.1	1653.7	1667.6	0.8	385.0	328.5
Machinery and transport equipment	1027.0	1016.0	-1.1	1219.4	1675.6	37.4	-192.4	-659.6
Miscellaneous manufactured articles	541.4	535.9	-1.0	375.9	419.1	11.5	165.5	116.8
Commodities and transactions n.e.c.	12.0	33.6	180.0	11.7	9.5	-18.8	0.3	24.1

<sup>1</sup> Data are preliminary as of 10.09.2012.