

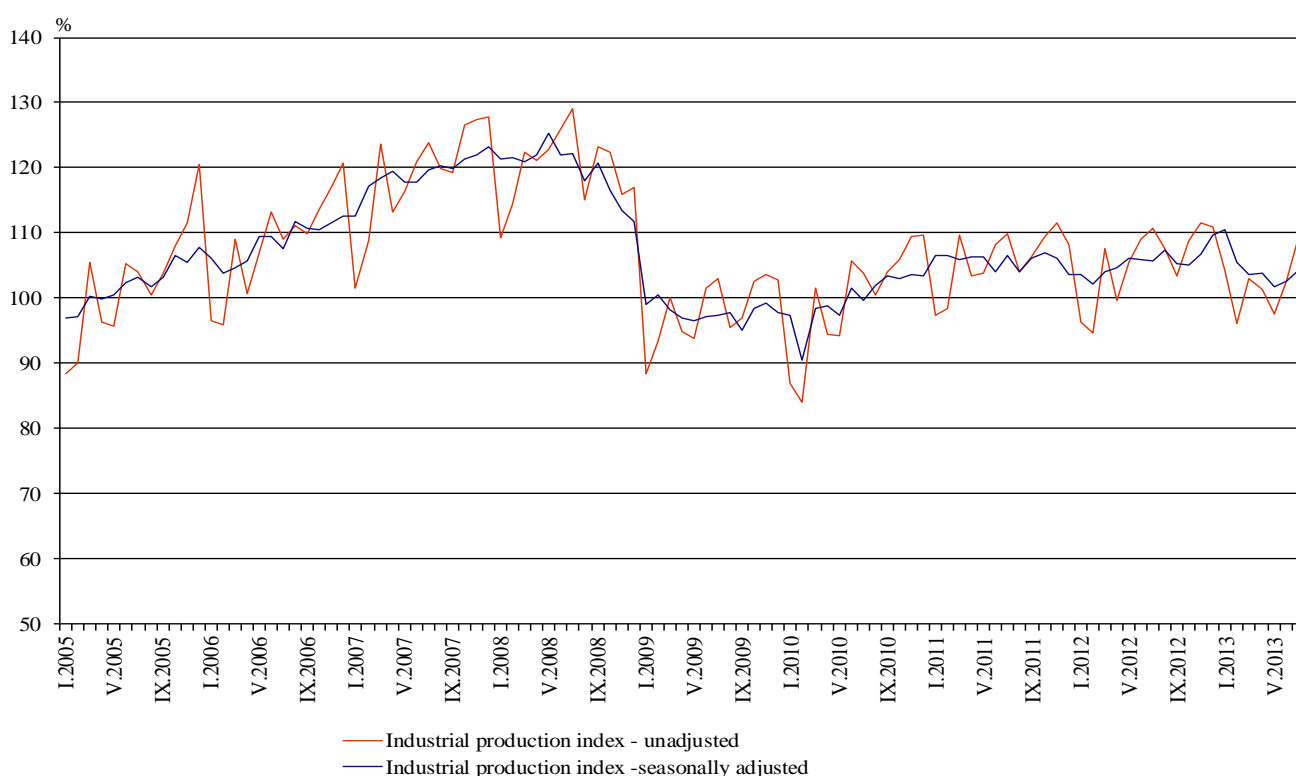


INDUSTRIAL PRODUCTION INDICES IN JULY 2013¹

The preliminary data showed that the Industrial Production Index², seasonally adjusted³, increased by 1.7% in July 2013 as compared to June 2013.

In July 2013 working day adjusted⁴ Industrial Production Index fall by 2.6% in comparison with the same month of 2012.

Figure 1. Industrial Production Indices (2010 = 100)



¹ July 2013 data are preliminary.

² Monthly Industrial Production and Industrial turnover indices measure changes in production and turnover values of industrial enterprises. This information can be used to access the current economic development and for short-term forecasts. Indices do not measure the actual production level, it aims to measure the average change in value of production between two points of time. Indices are compiled on the base of information collected through representative sampling survey on industrial enterprises. The sample covers enterprises with annual turnover more than 97% of total turnover in industry.

Industrial production indices are calculated at constant base year that is to say they are weighted with the structure of the value added at factor costs in the base year.

³ Seasonal adjustment is a statistical method, which eliminates the seasonal component of time series.

⁴ Working day adjustment is an adjustment for variations caused by calendar effects, different number of calendar and working days in the months, national holidays and outliers (for example the presence of more non-working days in May could contribute to the decline in the production in some activities).

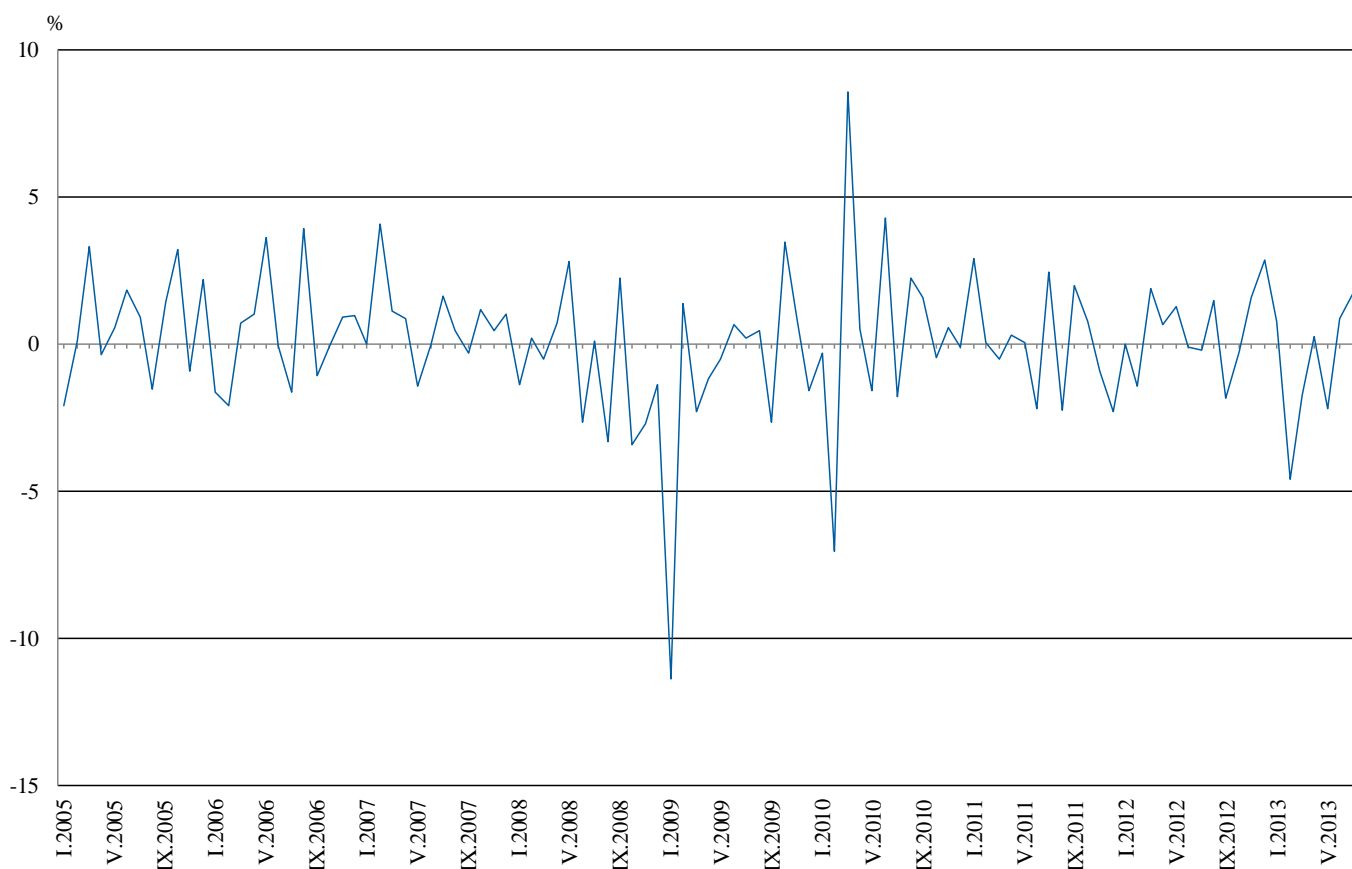


Monthly comparisons

In July 2013 as compared to June 2013, the seasonally adjusted Industrial Production Index increased in the manufacturing by 2.3%, in the mining and quarrying industry by 1.5% and in the electricity, gas, steam and air conditioning supply by 1.2%.

The most significant increases of production in the manufacturing were seen in the manufacture of computer, electronic and optical products by 21.5%, in the manufacture of basic pharmaceutical products and pharmaceutical preparations by 7.5%, in the manufacture of paper and paper products and in the repair and installation of machinery and equipment by 5.9%, in the manufacture of fabricated metal products, except machinery and equipment by 5.6%. There was a decrease in manufacture of beverages by 8.5%, in the manufacture of electrical equipment by 5.2%, in the manufacture of textiles by 2.6%.

**Figure 2. Changes of Industrial Production Indices compared to the previous month
(Seasonally adjusted)**



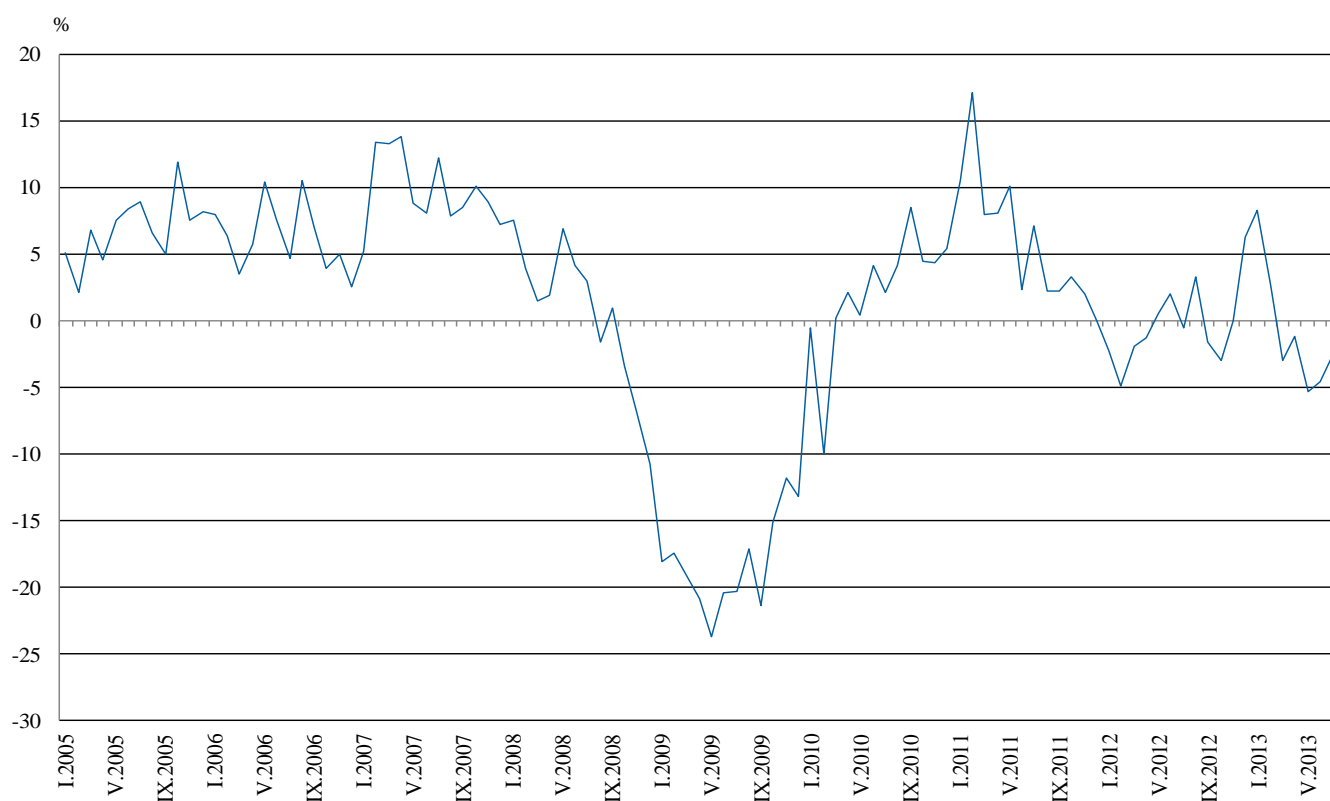


Annual comparisons

On annual basis in July 2013 Industrial Production Index, calculated from working day adjusted data decreased in the mining and quarrying industry by 15.9% and in the electricity, gas, steam and air conditioning supply by 7.7%, while in the manufacturing an increase by 1.2% was seen.

In the manufacturing, the more significant increases compared to the same month of the previous year were seen in the manufacture of motor vehicles, trailers and semi-trailers by 26.1%, in the printing and reproduction of recorded media by 20.0%, in the manufacture of textiles by 19.9%, in the manufacture of fabricated metal products, except machinery and equipment by 18.9%, in the manufacture of computer, electronic and optical products by 18.3%. Decreases were registered in the manufacture of other transport equipment by 22.7%, in the manufacture of leather and related products by 16.9%, in the manufacture of tobacco products by 14.0%, in the repair and installation of machinery and equipment by 8.5%.

Figure 3. Changes of Industrial Production Indices compared to the same month of the previous year (Working day adjusted)



The final data on Industrial Production and Turnover Indices for June 2013 can be found in NSI internet web-site: (<http://www.nsi.bg/otrasalen.php?otr=46>).

Changes of Industrial Production Indices compared to the previous month¹

(Per cent)

Economic Activities	NACE.BG - 2008 Code	2013					
		II	III	IV	V	VI	VII
Industry	B_TO_E36	-4.6	-1.7	0.3	-2.2	0.8	1.7
Mining and quarrying	B	-5.5	-10.7	0.5	1.3	6.1	1.5
of which:							
Mining of coal and lignite	B05	-12.2	-32.8	31.5	-23.4	44.9	-12.4
Mining of metal ores	B07	3.9	4.3	-10.7	11.0	-4.1	7.9
Other mining and quarrying	B08	4.1	5.0	5.9	3.7	-6.3	2.9
Manufacturing	C	-1.7	-2.6	2.0	-3.8	0.8	2.3
of which:							
Manufacture of food products	C10	-6.2	-0.5	5.2	-4.2	8.1	-0.4
Manufacture of beverages	C11	-9.9	-1.2	3.4	6.5	-1.3	-8.5
Manufacture of tobacco products	C12	6.5	15.0	2.7	-13.6	-8.6	2.2
Manufacture of textiles	C13	-10.9	3.7	2.1	-2.4	-1.2	-2.6
Manufacture of wearing apparel	C14	-0.7	-2.7	6.9	-7.5	-0.2	1.3
Manufacture of leather and related products	C15	-5.2	1.0	8.6	-11.2	-2.8	3.1
Manufacture of wood and of products of wood and cork, except furniture; manufacture of articles of straw and plaiting materials	C16	-4.1	2.6	4.7	-8.2	-1.5	0.0
Manufacture of paper and paper products	C17	6.9	2.1	0.0	-2.9	-4.1	5.9
Printing and reproduction of recorded media	C18	1.0	4.3	15.6	-4.8	-10.1	5.3
Manufacture of chemicals and chemical products	C20	-6.9	-1.7	4.0	4.7	-7.3	1.5
Manufacture of basic pharmaceutical products and pharmaceutical preparations	C21	-2.7	-0.8	4.1	-0.9	-9.8	7.5
Manufacture of rubber and plastic products	C22	1.3	-9.9	9.6	-4.8	-2.2	3.0
Manufacture of other non-metallic mineral products	C23	-7.3	-0.1	5.5	-3.0	-4.9	1.3
Manufacture of basic metals	C24	-38.7	0.5	2.0	0.9	-1.5	3.6
Manufacture of fabricated metal products, except machinery and equipment	C25	-13.1	6.9	-3.9	-2.5	8.2	5.6
Manufacture of computer, electronic and optical products	C26	15.6	-19.3	14.7	-8.3	-12.5	21.5
Manufacture of electrical equipment	C27	-4.2	-2.9	0.1	4.2	8.3	-5.2
Manufacture of machinery and equipment n.e.c.	C28	-1.6	4.6	1.1	-6.2	-3.7	4.8
Manufacture of motor vehicles, trailers and semi-trailers	C29	7.1	-5.0	3.1	-8.5	13.5	2.1
Manufacture of other transport equipment	C30	-18.1	-28.4	19.2	-24.8	11.6	-0.3
Manufacture of furniture	C31	-0.2	-7.4	4.9	-8.1	3.0	-1.9
Other manufacturing	C32	4.7	5.5	-6.7	-6.2	10.6	1.3
Repair and installation of machinery and equipment	C32	0.5	-7.3	4.8	-11.6	-6.1	5.9
Electricity, gas, steam and air conditioning supply	D	-16.9	3.7	-6.8	3.9	1.8	1.2
Electricity, gas, steam and air conditioning supply	D35	-16.9	3.7	-6.8	3.9	1.8	1.2

¹ Seasonally adjusted.



Table 2

Changes of Industrial Production Indices compared to the same month of the previous year¹
(Per cent)

Economic Activities	NACE.BG -2008 Code	2013					
		II	III	IV	V	VI	VII
Industry	B_TO_E36	2.7	-3.0	-1.2	-5.3	-4.6	-2.6
Mining and quarrying	B	-6.1	-21.4	-13.1	-15.0	-11.6	-15.9
of which:							
Mining of coal and lignite	B05	-18.5	-57.0	-29.3	-58.9	-0.5	-32.8
Mining of metal ores	B07	7.7	1.8	-9.2	18.3	-16.5	5.1
Other mining and quarrying	B08	17.3	8.1	8.5	19.2	-8.9	-19.1
Manufacturing	C	7.3	-2.7	1.7	-4.5	-4.7	1.2
of which:							
Manufacture of food products	C10	-10.6	-12.2	-4.3	-7.3	1.3	-0.7
Manufacture of beverages	C11	5.2	-6.2	-1.0	9.7	5.7	-6.4
Manufacture of tobacco products	C12	0.3	16.3	33.4	-5.8	-19.2	-14.0
Manufacture of textiles	C13	10.0	13.1	12.6	18.6	18.3	19.9
Manufacture of wearing apparel	C14	11.4	-1.4	12.7	4.3	-5.0	4.4
Manufacture of leather and related products	C15	-11.8	-12.7	7.9	-18.9	-30.1	-16.9
Manufacture of wood and of products of wood and cork, except furniture; manufacture of articles of straw and plaiting materials	C16	13.6	7.5	8.5	-10.5	-7.1	-7.2
Manufacture of paper and paper products	C17	41.3	13.3	8.8	7.5	7.0	8.9
Printing and reproduction of recorded media	C18	3.3	4.3	28.7	22.7	9.7	20.0
Manufacture of chemicals and chemical products	C20	-9.1	-16.2	7.8	-6.7	-10.8	0.4
Manufacture of basic pharmaceutical products and pharmaceutical preparations	C21	14.3	14.7	14.2	13.9	-6.0	-5.8
Manufacture of rubber and plastic products	C22	29.2	6.5	12.0	4.1	-1.3	8.6
Manufacture of other non-metallic mineral products	C23	43.1	1.7	4.7	7.1	0.0	-0.2
Manufacture of basic metals	C24	-11.3	3.4	-15.2	0.8	-12.4	3.3
Manufacture of fabricated metal products, except machinery and equipment	C25	-2.2	1.1	1.8	-14.3	8.0	18.9
Manufacture of computer, electronic and optical products	C26	16.9	-8.1	0.3	-8.4	-25.4	18.3
Manufacture of electrical equipment	C27	10.5	-0.3	-5.9	-2.5	6.7	2.3
Manufacture of machinery and equipment n.e.c.	C28	5.7	6.5	10.2	0.2	-4.8	5.4
Manufacture of motor vehicles, trailers and semi-trailers	C29	30.2	22.6	23.6	11.1	25.5	26.1
Manufacture of other transport equipment	C30	-5.5	-45.9	-26.5	-35.1	-50.5	-22.7
Manufacture of furniture	C31	32.6	11.9	18.7	-2.7	1.6	-0.4
Other manufacturing	C32	47.7	31.3	15.0	4.7	23.2	26.0
Repair and installation of machinery and equipment	C33	-12.8	-10.0	-4.2	-25.7	-25.4	-8.5
Electricity, gas, steam and air conditioning supply	D	-5.2	4.7	-2.6	-2.7	0.3	-7.7
Electricity, gas, steam and air conditioning supply	D35	-5.2	4.7	-2.6	-2.7	0.3	-7.7

¹ Working day adjusted.



Table 3

Industrial Production Indices
(Seasonally adjusted, 2010 = 100)

NACE.BG - 2008 Code	2012						2013						
	VII	VIII	IX	X	XI	XII	I	II	III	IV	V	VI	VII
B_TO_E36	105.7	107.3	105.3	105.0	106.7	109.7	110.6	105.5	103.7	103.9	101.7	102.5	104.3
B	113.0	112.1	112.7	110.8	82.3	109.9	102.0	96.4	86.1	86.5	87.6	93.0	94.4
B05	113.1	113.1	117.3	108.5	83.5	116.1	103.6	91.0	61.2	80.4	61.6	89.3	78.2
B07	96.4	99.7	98.1	108.3	78.3	112.7	91.1	94.6	98.7	88.2	97.9	93.9	101.3
B08	140.4	121.8	126.1	123.6	124.0	103.3	97.3	101.3	106.4	112.7	116.8	109.5	112.7
C	105.1	106.3	103.9	104.5	105.8	105.6	109.2	107.4	104.5	106.6	102.6	103.4	105.9
C10	94.9	95.3	90.9	92.5	91.9	91.3	92.9	87.1	86.7	91.2	87.4	94.5	94.1
C11	100.0	97.2	100.0	102.5	97.6	89.6	108.5	97.8	96.6	99.8	106.3	104.9	96.0
C12	138.7	120.6	133.8	83.3	78.2	115.4	119.7	127.5	146.6	150.5	130.0	118.8	121.4
C13	79.1	85.1	87.3	90.0	95.2	102.8	107.4	95.7	99.2	101.3	98.8	97.6	95.1
C14	92.3	95.4	91.0	89.8	96.7	96.0	100.4	99.7	97.0	103.7	96.0	95.8	97.0
C15	86.5	93.2	82.0	74.5	81.8	73.7	80.2	76.0	76.8	83.4	74.1	72.0	74.2
C16	105.1	99.1	95.2	100.5	101.2	91.0	104.2	99.9	102.5	107.3	98.5	97.0	97.0
C17	112.7	105.7	106.2	103.3	106.8	110.2	110.0	117.6	120.0	119.9	116.4	111.6	118.2
C18	87.3	84.2	85.3	84.9	100.7	93.6	94.8	95.8	99.9	115.6	110.0	98.8	104.1
C20	97.1	101.2	102.5	98.6	97.4	95.2	104.2	97.0	95.4	99.2	103.9	96.3	97.7
C21	142.5	124.6	132.7	125.0	121.2	122.4	139.9	136.1	135.1	140.6	139.4	125.7	135.1
C22	102.0	107.7	105.5	105.0	110.1	95.4	115.8	117.2	105.7	115.8	110.2	107.8	111.0
C23	106.6	107.9	104.0	111.2	118.9	105.6	117.4	108.8	108.7	114.7	111.3	105.8	107.3
C24	96.3	91.7	95.0	92.6	95.9	90.4	148.5	91.0	91.4	93.2	94.1	92.7	96.0
C25	94.2	99.2	93.3	104.2	103.0	102.4	111.7	97.1	103.8	99.7	97.1	105.1	110.9
C26	110.1	111.7	118.3	104.2	130.2	105.1	124.1	143.5	115.9	132.9	121.9	106.7	129.6
C27	126.8	125.2	127.1	129.7	129.4	141.0	130.9	125.4	121.8	121.9	127.0	137.6	130.5
C28	123.4	131.1	120.1	119.6	122.9	125.1	132.8	130.6	136.6	138.1	129.6	124.8	130.8
C29	86.5	85.5	94.7	92.8	94.6	81.6	96.6	103.4	98.2	101.2	92.6	105.1	107.4
C30	90.2	74.5	80.0	114.2	77.9	95.3	122.1	100.0	71.6	85.4	64.2	71.6	71.4
C31	113.3	115.7	118.7	115.5	116.5	116.9	126.8	126.5	117.2	123.0	113.0	116.4	114.2
C32	121.8	138.4	138.0	137.1	121.6	120.5	141.9	148.6	156.7	146.3	137.2	151.9	153.8
C33	78.7	97.3	71.0	94.2	104.9	96.4	85.6	86.0	79.7	83.5	73.8	69.4	73.5
D	112.2	113.3	105.1	104.3	116.0	124.2	122.9	102.1	106.0	98.8	102.6	104.5	105.7
D35	112.2	113.3	105.1	104.3	116.0	124.2	122.9	102.1	106.0	98.8	102.6	104.5	105.7



Table 4

Industrial Production Indices
(Working day adjusted, 2010 = 100)

NACE.BG - 2008 Code	2010	2011	2012						2013						
	VII	VII	VII	VIII	IX	X	XI	XII	I	II	III	IV	V	VI	VII
B_TO_E36	104.0	111.4	110.8	106.4	104.6	107.6	110.7	113.7	103.6	96.3	103.5	100.7	98.2	104.5	107.9
B	99.7	110.2	112.7	109.7	116.5	124.3	89.4	117.9	95.3	89.9	83.5	80.9	83.1	89.3	94.7
B05	98.1	110.0	111.0	108.1	123.6	130.7	96.9	128.9	110.4	87.8	49.9	58.0	43.1	73.3	74.5
B07	101.2	105.4	96.4	99.7	98.1	108.3	78.3	112.7	91.1	94.6	98.7	88.2	97.9	93.9	101.3
B08	99.6	107.1	156.0	131.7	139.6	143.2	140.1	109.9	62.7	72.6	95.9	109.7	123.9	119.7	126.2
C	107.1	113.5	112.6	106.6	106.8	109.3	110.3	101.7	93.5	92.6	103.5	108.1	105.2	111.7	114.0
C10	101.6	96.2	96.2	98.9	98.5	101.8	97.9	95.6	77.7	75.1	85.4	87.8	85.8	97.1	95.5
C11	123.0	128.1	126.9	121.8	109.6	94.3	89.6	93.0	69.4	63.2	89.4	97.0	119.9	131.8	118.8
C12	123.9	120.9	160.2	122.9	139.7	98.5	86.2	111.4	89.5	95.2	142.2	141.6	136.6	139.8	137.7
C13	118.7	111.4	83.5	68.0	82.3	89.1	100.4	90.8	91.7	91.8	110.5	111.8	110.7	111.0	100.1
C14	116.4	122.1	106.9	95.3	88.0	87.3	96.2	97.5	101.7	99.1	93.8	99.2	87.3	102.9	111.7
C15	117.2	125.8	107.5	96.6	89.9	74.4	79.7	65.9	79.4	71.8	75.3	71.7	65.4	75.5	89.4
C16	113.3	116.9	116.9	103.2	105.5	114.4	111.5	86.6	80.1	78.9	96.8	104.8	98.9	106.4	108.5
C17	107.1	128.6	120.3	106.5	109.1	98.2	102.5	105.3	100.3	110.6	126.9	125.9	121.2	123.5	131.1
C18	93.3	97.5	86.7	84.8	89.1	93.4	112.7	107.6	79.4	84.7	95.0	111.9	106.9	103.2	104.1
C20	103.7	114.4	97.7	95.4	103.3	95.9	100.6	94.2	97.2	91.2	105.2	102.6	104.3	99.8	98.1
C21	84.7	97.6	133.0	121.2	134.9	136.3	126.4	120.1	112.9	137.4	139.2	140.1	139.3	137.4	125.3
C22	114.8	114.4	112.0	112.2	113.0	117.8	118.7	86.7	93.8	98.4	104.2	113.6	110.1	116.4	121.7
C23	111.3	121.7	116.9	112.6	113.7	126.1	129.3	88.6	83.1	86.9	104.7	120.2	120.7	116.8	116.7
C24	108.4	122.8	113.2	80.6	89.4	97.5	109.8	68.3	139.2	88.8	89.0	104.4	101.5	87.2	116.9
C25	102.0	122.8	97.3	98.4	95.2	104.8	108.8	120.7	81.5	85.5	106.9	99.3	96.3	113.3	115.6
C26	100.2	132.1	108.8	101.0	125.4	104.9	136.9	129.9	106.2	127.1	118.0	130.7	122.0	111.8	128.7
C27	103.7	117.6	136.5	110.5	131.2	140.9	140.5	136.3	114.0	111.1	118.3	121.0	123.1	152.9	139.6
C28	106.6	125.6	132.4	122.2	120.9	123.7	126.9	119.2	112.7	123.8	147.1	138.4	130.8	136.9	139.6
C29	87.8	97.2	85.9	74.8	95.8	99.1	105.4	75.6	89.8	96.8	101.7	104.8	93.9	112.8	108.4
C30	104.6	89.5	93.4	69.1	77.5	99.9	67.5	102.1	77.6	82.0	71.8	79.3	79.2	85.8	72.2
C31	99.7	118.6	117.6	116.9	122.4	126.3	125.9	123.8	105.3	110.0	116.0	118.2	111.0	122.9	117.1
C32	84.6	124.6	121.7	141.4	149.3	160.3	128.7	109.5	115.1	128.2	154.6	141.3	140.3	172.6	153.4
C33	106.0	73.4	78.7	97.2	73.6	98.6	116.9	133.0	58.5	72.2	78.1	76.2	68.3	70.0	72.0
D	94.9	105.2	104.3	103.9	92.1	98.3	124.6	149.7	141.9	112.3	115.5	89.2	84.4	89.6	96.3
D35	94.9	105.2	104.3	103.9	92.1	98.3	124.6	149.7	141.9	112.3	115.5	89.2	84.4	89.6	96.3