

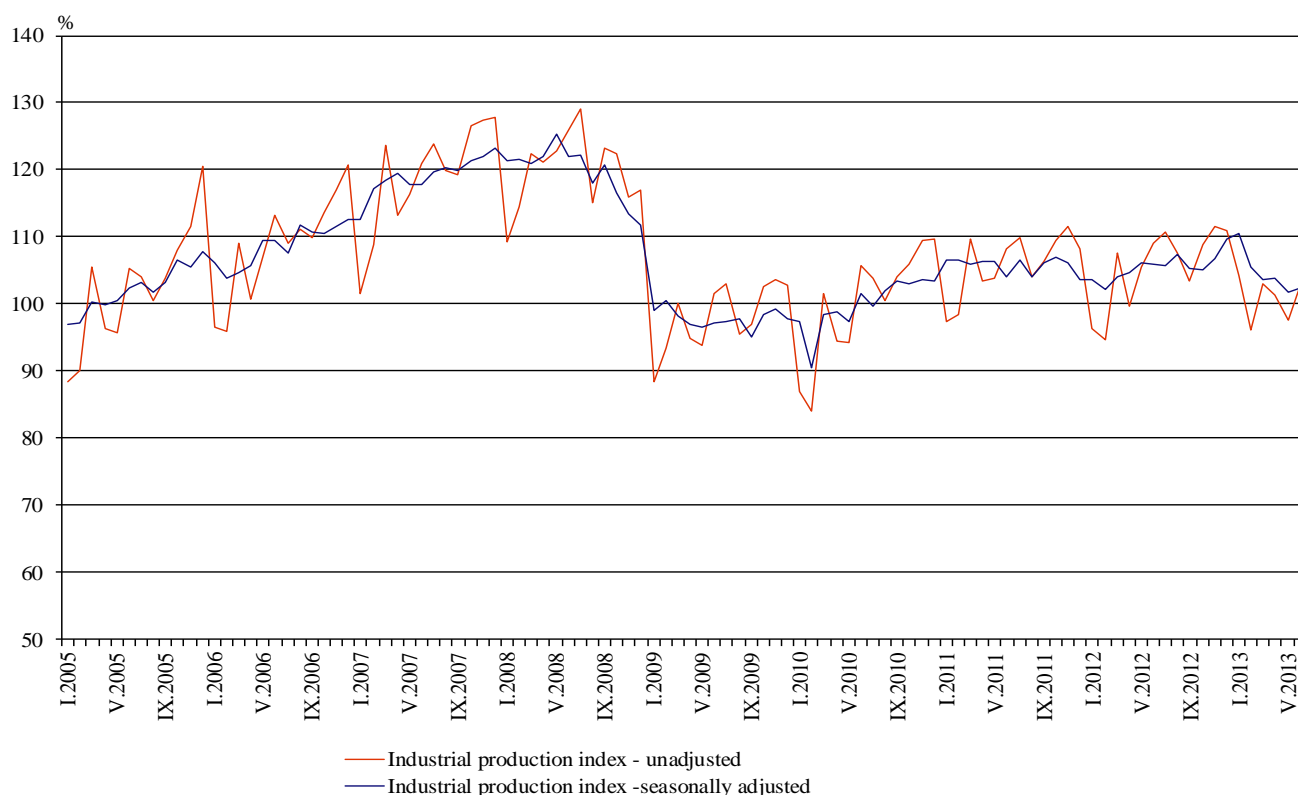


INDUSTRIAL PRODUCTION INDICES IN JUNE 2013¹

According to the preliminary data the Industrial Production Index², seasonally adjusted³, increased by 0.8% in June 2013 as compared to May 2013.

In June 2013 working day adjusted⁴ Industrial Production Index fall by 4.4% in comparison with the same month of 2012.

Figure 1. Industrial Production Indices (2010=100)



¹ Data for June 2013 are preliminary.

² Monthly Industrial Production and Industrial turnover indices measure changes in production and turnover values of industrial enterprises. This information can be used to assess the current economic development and for short-term forecasts. Indices do not measure the actual production level, it aims to measure the average change in value of production between two points of time. Indices are compiled on the basis of information collected through representative sampling survey on industrial enterprises. The sample covers enterprises with annual turnover more than 97% of total turnover in industry.

Industrial production indices are calculated at constant base year that is to say they are weighted with the structure of the value added at factor costs in the base year.

³ Seasonal adjustment is a statistical method, which eliminates the seasonal component of time series.

⁴ Working day adjustment is an adjustment for variations caused by calendar effects, different number of calendar and working days in the months, national holidays and outliers (for example the presence of more non-working days in May could contribute to the decline in the production in some activities).

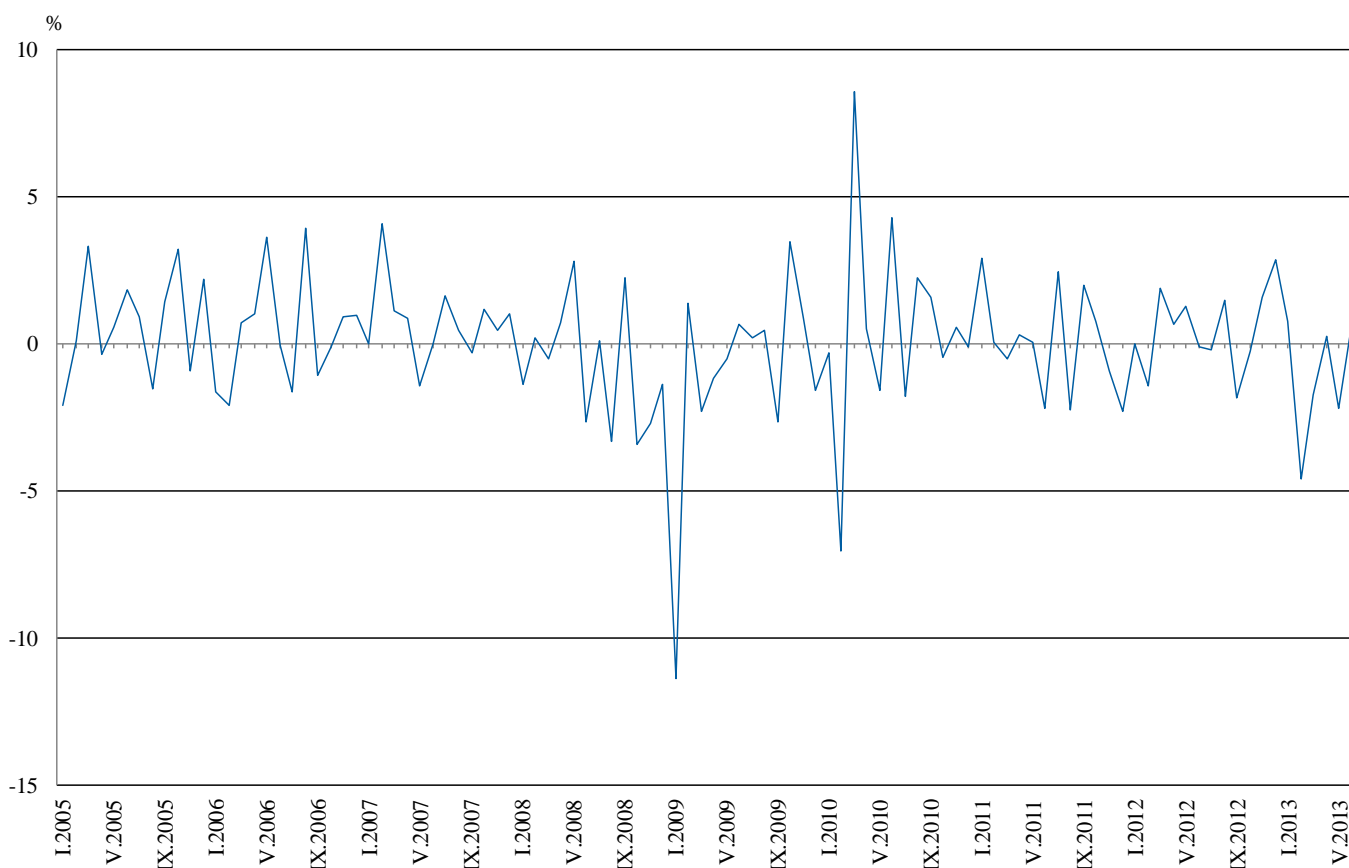


Monthly comparisons

In June 2013 as compared to May 2013, the seasonally adjusted Industrial Production Index increased in the mining and quarrying industry by 5.4%, in the electricity, gas, steam and air conditioning supply by 2.2% and in the manufacturing by 0.2%.

The most significant increases of production in the manufacturing were seen in the manufacture of other transport equipment by 12.2%, in the manufacture of motor vehicles, trailers and semi-trailers by 12.1%, in the manufacture of fabricated metal products, except machinery and equipment by 10.8%, in the manufacture of electrical equipment by 8.5%, in the manufacture of food products by 7.8%. There was decrease in the manufacture of computer, electronic and optical products by 12.5%, in the printing and reproduction of recorded media by 9.4%, in the manufacture of leather and related products and in the repair and installation of machinery and equipment by 7.7%.

Figure 2. Percentage changes of Industrial Production Indices compared to the previous month (Seasonally adjusted)



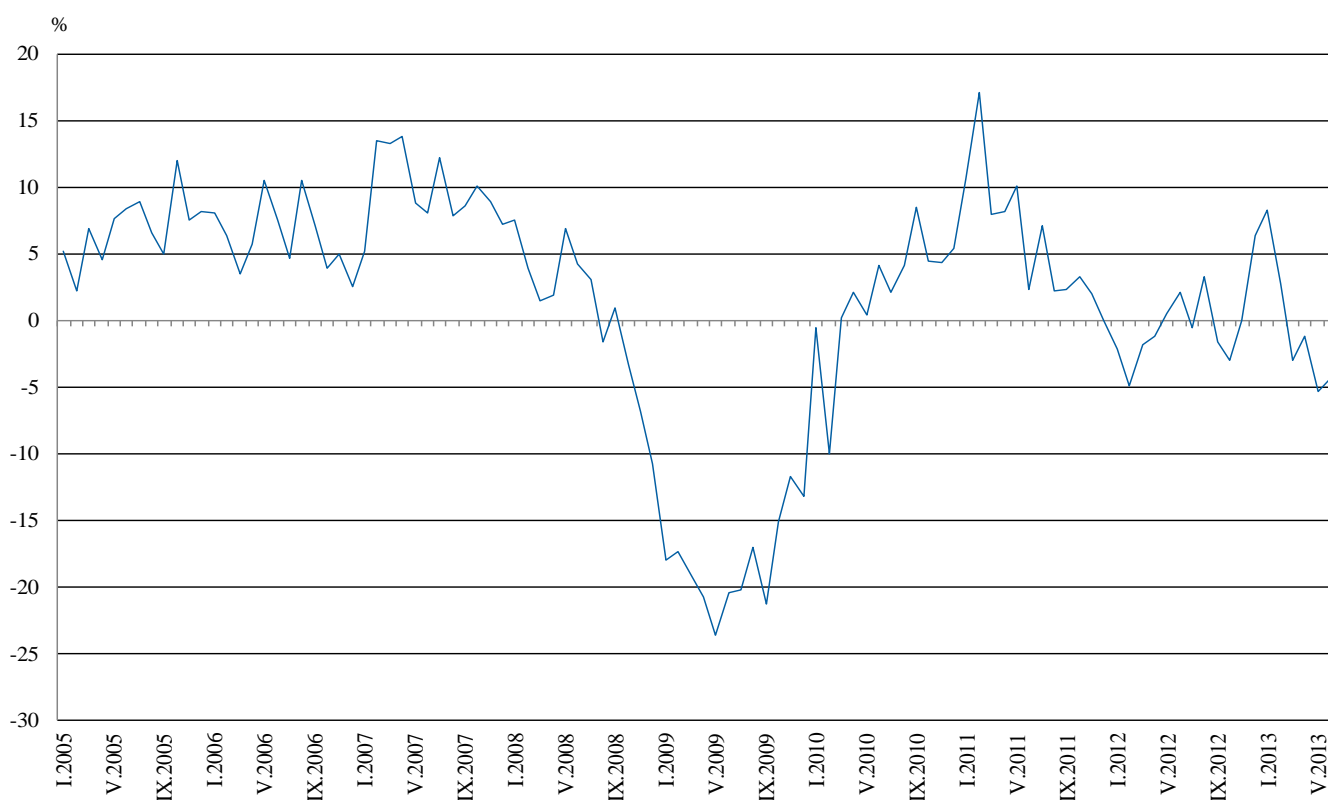


Annual comparisons

On annual basis in June 2013 Industrial Production Index, calculated from working day adjusted data decreased in the mining and quarrying industry by 11.7%, in the manufacturing by 4.5%, while in the electricity, gas, steam and air conditioning supply an increase by 0.8% was seen.

In the manufacturing, the more significant decreases compared to the same month of the previous year were seen in the manufacture of other transport equipment by 50.4%, in the manufacture of leather and related products by 32.6%, in the repair and installation of machinery and equipment by 26.2%, in the manufacture of computer, electronic and optical products by 25.1%, in the manufacture of tobacco products by 17.1%. Increases were registered in the manufacture of motor vehicles, trailers and semi-trailers by 24.8%, in the manufacture of textiles by 17.0%, in the manufacture of fabricated metal products, except machinery and equipment by 10.4%, in the printing and reproduction of recorded media by 9.7%.

**Figure 3. Percentage changes of Industrial Production Indices
compared to the same month of the previous year
(Working day adjusted)**



The final data on Industrial Production and Turnover Indices for May 2013 can be found on NSI web-site: (<http://www.nsi.bg/otrasalen.php?otr=46>).

Table 1

Percentage changes of Industrial Production Indices compared to the previous month¹

Economic Activities	NACE.BG - 2008 Code	2013					
		I	II	III	IV	V	VI
Industry	B_TO_E36	0.7	-4.6	-1.7	0.3	-2.2	0.8
Mining and quarrying	B	-7.2	-5.5	-10.7	0.5	1.3	5.4
of which:							
Mining of coal and lignite	B05	-10.8	-12.2	-32.8	31.5	-23.4	44.5
Mining of metal ores	B07	-19.2	3.9	4.3	-10.7	11.0	-4.0
Other mining and quarrying	B08	-5.8	4.1	5.0	5.9	3.7	-7.8
Manufacturing	C	3.4	-1.7	-2.6	2.0	-3.8	0.2
of which:							
Manufacture of food products	C10	1.7	-6.2	-0.5	5.2	-4.2	7.8
Manufacture of beverages	C11	21.1	-9.9	-1.2	3.4	6.5	-0.7
Manufacture of tobacco products	C12	3.7	6.5	15.0	2.7	-13.6	-4.4
Manufacture of textiles	C13	4.5	-10.9	3.7	2.1	-2.4	-1.8
Manufacture of wearing apparel	C14	4.6	-0.7	-2.7	6.9	-7.5	-0.3
Manufacture of leather and related products	C15	8.9	-5.2	1.0	8.6	-11.2	-7.7
Manufacture of wood and of products of wood and cork, except furniture; manufacture of articles of straw and plaiting materials	C16	14.5	-4.1	2.6	4.7	-8.2	-1.3
Manufacture of paper and paper products	C17	-0.2	6.9	2.1	0.0	-2.9	-2.1
Printing and reproduction of recorded media	C18	1.3	1.0	4.3	15.6	-4.8	-9.4
Manufacture of chemicals and chemical products	C20	9.4	-6.9	-1.7	4.0	4.7	-7.8
Manufacture of basic pharmaceutical products and pharmaceutical preparations	C21	14.3	-2.7	-0.8	4.1	-0.9	-6.6
Manufacture of rubber and plastic products	C22	21.3	1.3	-9.9	9.6	-4.8	-1.8
Manufacture of other non-metallic mineral products	C23	11.1	-7.3	-0.1	5.5	-3.0	-4.6
Manufacture of basic metals	C24	64.2	-38.7	0.5	2.0	0.9	-7.2
Manufacture of fabricated metal products, except machinery and equipment	C25	9.1	-13.1	6.9	-3.9	-2.5	10.8
Manufacture of computer, electronic and optical products	C26	18.1	15.6	-19.3	14.7	-8.3	-12.5
Manufacture of electrical equipment	C27	-7.1	-4.2	-2.9	0.1	4.2	8.5
Manufacture of machinery and equipment n.e.c.	C28	6.2	-1.6	4.6	1.1	-6.2	-3.7
Manufacture of motor vehicles, trailers and semi-trailers	C29	18.3	7.1	-5.0	3.1	-8.5	12.1
Manufacture of other transport equipment	C30	28.1	-18.1	-28.4	19.2	-24.8	12.2
Manufacture of furniture	C31	8.5	-0.2	-7.4	4.9	-8.1	2.6
Other manufacturing	C32	17.8	4.7	5.5	-6.7	-6.2	9.9
Repair and installation of machinery and equipment	C32	-11.2	0.5	-7.3	4.8	-11.6	-7.7
Electricity, gas, steam and air conditioning supply	D	-1.1	-16.9	3.7	-6.8	3.9	2.2
Electricity, gas, steam and air conditioning supply	D35	-1.1	-16.9	3.7	-6.8	3.9	2.2

¹Seasonally adjusted.



Table 2

**Percentage changes of Industrial Production Indices
compared to the same month of the previous year¹**

Economic Activities	NACE.BG -2008 Code	2013					
		I	II	III	IV	V	VI
Industry	B_TO_E36	8.3	2.7	-3.0	-1.2	-5.3	-4.4
Mining and quarrying	B	-5.9	-6.1	-21.4	-13.1	-15.0	-11.7
of which:							
Mining of coal and lignite	B05	-0.7	-18.5	-57.0	-29.3	-58.9	-0.3
Mining of metal ores	B07	-6.3	7.7	1.8	-9.2	18.3	-16.4
Other mining and quarrying	B08	-1.8	17.3	8.1	8.5	19.2	-10.5
Manufacturing	C	6.1	7.3	-2.7	1.7	-4.5	-4.5
of which:							
Manufacture of food products	C10	2.0	-10.6	-12.2	-4.3	-7.3	1.0
Manufacture of beverages	C11	24.6	5.2	-6.2	-1.0	9.7	4.9
Manufacture of tobacco products	C12	-6.4	0.3	16.3	33.4	-5.8	-17.1
Manufacture of textiles	C13	25.7	10.0	13.1	12.6	18.6	17.0
Manufacture of wearing apparel	C14	5.4	11.4	-1.4	12.7	4.3	-4.9
Manufacture of leather and related products	C15	-9.6	-11.8	-12.7	7.9	-18.9	-32.6
Manufacture of wood and of products of wood and cork, except furniture; manufacture of articles of straw and plaiting materials	C16	4.8	13.6	7.5	8.5	-10.5	-6.8
Manufacture of paper and paper products	C17	47.0	41.3	13.3	8.8	7.5	7.4
Printing and reproduction of recorded media	C18	3.6	3.3	4.3	28.7	22.7	9.7
Manufacture of chemicals and chemical products	C20	-8.0	-9.1	-16.2	7.8	-6.7	-11.3
Manufacture of basic pharmaceutical products and pharmaceutical preparations	C21	29.2	14.3	14.7	14.2	13.9	-1.4
Manufacture of rubber and plastic products	C22	15.0	29.2	6.5	12.0	4.1	-0.7
Manufacture of other non-metallic mineral products	C23	8.7	43.1	1.7	4.7	7.1	0.4
Manufacture of basic metals	C24	27.9	-11.3	3.4	-15.2	0.8	-13.4
Manufacture of fabricated metal products, except machinery and equipment	C25	11.8	-2.2	1.1	1.8	-14.3	10.4
Manufacture of computer, electronic and optical products	C26	-12.6	16.9	-8.1	0.3	-8.4	-25.1
Manufacture of electrical equipment	C27	19.8	10.5	-0.3	-5.9	-2.5	6.3
Manufacture of machinery and equipment n.e.c.	C28	8.8	5.7	6.5	10.2	0.2	-4.6
Manufacture of motor vehicles, trailers and semi-trailers	C29	21.2	30.2	22.6	23.6	11.1	24.8
Manufacture of other transport equipment	C30	9.6	-5.5	-45.9	-26.5	-35.1	-50.4
Manufacture of furniture	C31	19.4	32.6	11.9	18.7	-2.7	0.8
Other manufacturing	C32	2.9	47.7	31.3	15.0	4.7	22.8
Repair and installation of machinery and equipment	C33	-5.7	-12.8	-10.0	-4.2	-25.7	-26.2
Electricity, gas, steam and air conditioning supply	D	18.4	-5.2	4.7	-2.6	-2.7	0.8
Electricity, gas, steam and air conditioning supply	D35	18.4	-5.2	4.7	-2.6	-2.7	0.8

¹ Working day adjusted.



Table 3

Industrial Production Indices
(Seasonally adjusted, 2010=100)

NACE.BG - 2008 Code	2012							2013					
	VI	VII	VIII	IX	X	XI	XII	I	II	III	IV	V	VI
B_TO_E36	106.0	105.7	107.3	105.3	105.0	106.7	109.7	110.6	105.5	103.7	103.9	101.7	102.4
B	105.3	113.0	112.1	112.7	110.8	82.3	109.9	102.0	96.4	86.1	86.5	87.6	92.4
B05	92.3	113.1	113.1	117.3	108.5	83.5	116.1	103.6	91.0	61.2	80.4	61.6	89.0
B07	112.4	96.4	99.7	98.1	108.3	78.3	112.7	91.1	94.6	98.7	88.2	97.9	93.9
B08	120.2	140.4	121.8	126.1	123.6	124.0	103.3	97.3	101.3	106.4	112.7	116.8	107.8
C	106.8	105.1	106.3	103.9	104.5	105.8	105.6	109.2	107.4	104.5	106.6	102.6	102.8
C10	93.4	94.9	95.3	90.9	92.5	91.9	91.3	92.9	87.1	86.7	91.2	87.4	94.2
C11	102.2	100.0	97.2	100.0	102.5	97.6	89.6	108.5	97.8	96.6	99.8	106.3	105.6
C12	145.6	138.7	120.6	133.8	83.3	78.2	115.4	119.7	127.5	146.6	150.5	130.0	124.3
C13	82.1	79.1	85.1	87.3	90.0	95.2	102.8	107.4	95.7	99.2	101.3	98.8	97.0
C14	99.9	92.3	95.4	91.0	89.8	96.7	96.0	100.4	99.7	97.0	103.7	96.0	95.7
C15	96.4	86.5	93.2	82.0	74.5	81.8	73.7	80.2	76.0	76.8	83.4	74.1	68.4
C16	104.4	105.1	99.1	95.2	100.5	101.2	91.0	104.2	99.9	102.5	107.3	98.5	97.3
C17	105.5	112.7	105.7	106.2	103.3	106.8	110.2	110.0	117.6	120.0	119.9	116.4	114.0
C18	90.7	87.3	84.2	85.3	84.9	100.7	93.6	94.8	95.8	99.9	115.6	110.0	99.6
C20	107.5	97.1	101.2	102.5	98.6	97.4	95.2	104.2	97.0	95.4	99.2	103.9	95.8
C21	127.3	142.5	124.6	132.7	125.0	121.2	122.4	139.9	136.1	135.1	140.6	139.4	130.1
C22	108.1	102.0	107.7	105.5	105.0	110.1	95.4	115.8	117.2	105.7	115.8	110.2	108.2
C23	104.3	106.6	107.9	104.0	111.2	118.9	105.6	117.4	108.8	108.7	114.7	111.3	106.2
C24	99.2	96.3	91.7	95.0	92.6	95.9	90.4	148.5	91.0	91.4	93.2	94.1	87.3
C25	97.9	94.2	99.2	93.3	104.2	103.0	102.4	111.7	97.1	103.8	99.7	97.1	107.6
C26	141.3	110.1	111.7	118.3	104.2	130.2	105.1	124.1	143.5	115.9	132.9	121.9	106.7
C27	131.2	126.8	125.2	127.1	129.7	129.4	141.0	130.9	125.4	121.8	121.9	127.0	137.9
C28	128.3	123.4	131.1	120.1	119.6	122.9	125.1	132.8	130.6	136.6	138.1	129.6	124.9
C29	84.4	86.5	85.5	94.7	92.8	94.6	81.6	96.6	103.4	98.2	101.2	92.6	103.8
C30	139.9	90.2	74.5	80.0	114.2	77.9	95.3	122.1	100.0	71.6	85.4	64.2	72.0
C31	114.1	113.3	115.7	118.7	115.5	116.5	116.9	126.8	126.5	117.2	123.0	113.0	115.9
C32	123.3	121.8	138.4	138.0	137.1	121.6	120.5	141.9	148.6	156.7	146.3	137.2	150.8
C33	89.8	78.7	97.3	71.0	94.2	104.9	96.4	85.6	86.0	79.7	83.5	73.8	68.1
D	103.6	112.2	113.3	105.1	104.3	116.0	124.2	122.9	102.1	106.0	98.8	102.6	104.8
D35	103.6	112.2	113.3	105.1	104.3	116.0	124.2	122.9	102.1	106.0	98.8	102.6	104.8



Table 4

**Industrial Production Indices
(Working day adjusted, 2010=100)**

NACE.BG - 2008 Code	2010	2011	2012							2013					
	VI	VI	VI	VII	VIII	IX	X	XI	XII	I	II	III	IV	V	VI
B_TO_E36	104.9	107.4	109.6	110.8	106.4	104.6	107.6	110.7	113.7	103.6	96.3	103.5	100.7	98.2	104.8
B	103.9	98.2	101.0	112.7	109.7	116.5	124.3	89.4	117.9	95.3	89.9	83.5	80.9	83.1	89.1
B05	94.5	109.5	73.7	111.0	108.1	123.6	130.7	96.9	128.9	110.4	87.8	49.9	58.0	43.1	73.5
B07	110.9	80.2	112.4	96.4	99.7	98.1	108.3	78.3	112.7	91.1	94.6	98.7	88.2	97.9	93.9
B08	109.9	102.6	131.4	156.0	131.7	139.6	143.2	140.1	109.9	62.7	72.6	95.9	109.7	123.9	117.6
C	109.4	113.6	117.3	112.6	106.6	106.8	109.3	110.3	101.7	93.5	92.6	103.5	108.1	105.2	112.0
C10	106.8	94.2	95.9	96.2	98.9	98.5	101.8	97.9	95.6	77.7	75.1	85.4	87.8	85.8	96.9
C11	120.4	113.5	124.7	126.9	121.8	109.6	94.3	89.6	93.0	69.4	63.2	89.4	97.0	119.9	130.8
C12	120.6	129.0	173.2	160.2	122.9	139.7	98.5	86.2	111.4	89.5	95.2	142.2	141.6	136.6	143.6
C13	117.2	131.7	93.8	83.5	68.0	82.3	89.1	100.4	90.8	91.7	91.8	110.5	111.8	110.7	109.7
C14	100.1	105.1	108.3	106.9	95.3	88.0	87.3	96.2	97.5	101.7	99.1	93.8	99.2	87.3	103.0
C15	103.8	103.0	108.1	107.5	96.6	89.9	74.4	79.7	65.9	79.4	71.8	75.3	71.7	65.4	72.8
C16	107.2	112.2	114.5	116.9	103.2	105.5	114.4	111.5	86.6	80.1	78.9	96.8	104.8	98.9	106.7
C17	122.1	132.5	115.4	120.3	106.5	109.1	98.2	102.5	105.3	100.3	110.6	126.9	125.9	121.2	124.0
C18	95.1	97.6	94.0	86.7	84.8	89.1	93.4	112.7	107.6	79.4	84.7	95.0	111.9	106.9	103.1
C20	98.1	119.4	111.9	97.7	95.4	103.3	95.9	100.6	94.2	97.2	91.2	105.2	102.6	104.3	99.3
C21	114.6	128.9	146.2	133.0	121.2	134.9	136.3	126.4	120.1	112.9	137.4	139.2	140.1	139.3	144.2
C22	108.5	112.8	118.0	112.0	112.2	113.0	117.8	118.7	86.7	93.8	98.4	104.2	113.6	110.1	117.1
C23	124.6	123.8	116.8	116.9	112.6	113.7	126.1	129.3	88.6	83.1	86.9	104.7	120.2	120.7	117.2
C24	96.2	110.1	99.5	113.2	80.6	89.4	97.5	109.8	68.3	139.2	88.8	89.0	104.4	101.5	86.1
C25	111.9	118.7	105.0	97.3	98.4	95.2	104.8	108.8	120.7	81.5	85.5	106.9	99.3	96.3	115.9
C26	98.7	128.0	150.0	108.8	101.0	125.4	104.9	136.9	129.9	106.2	127.1	118.0	130.7	122.0	112.4
C27	102.4	114.2	143.4	136.5	110.5	131.2	140.9	140.5	136.3	114.0	111.1	118.3	121.0	123.1	152.4
C28	111.3	129.7	143.8	132.4	122.2	120.9	123.7	126.9	119.2	112.7	123.8	147.1	138.4	130.8	137.1
C29	112.4	98.8	89.8	85.9	74.8	95.8	99.1	105.4	75.6	89.8	96.8	101.7	104.8	93.9	112.1
C30	113.0	96.7	173.5	93.4	69.1	77.5	99.9	67.5	102.1	77.6	82.0	71.8	79.3	79.2	86.0
C31	103.3	116.2	120.9	117.6	116.9	122.4	126.3	125.9	123.8	105.3	110.0	116.0	118.2	111.0	121.8
C32	104.2	138.6	140.0	121.7	141.4	149.3	160.3	128.7	109.5	115.1	128.2	154.6	141.3	140.3	172.0
C33	108.1	82.8	93.8	78.7	97.2	73.6	98.6	116.9	133.0	58.5	72.2	78.1	76.2	68.3	69.2
D	91.1	91.1	89.3	104.3	103.9	92.1	98.3	124.6	149.7	141.9	112.3	115.5	89.2	84.4	90.0
D35	91.1	91.1	89.3	104.3	103.9	92.1	98.3	124.6	149.7	141.9	112.3	115.5	89.2	84.4	90.0