

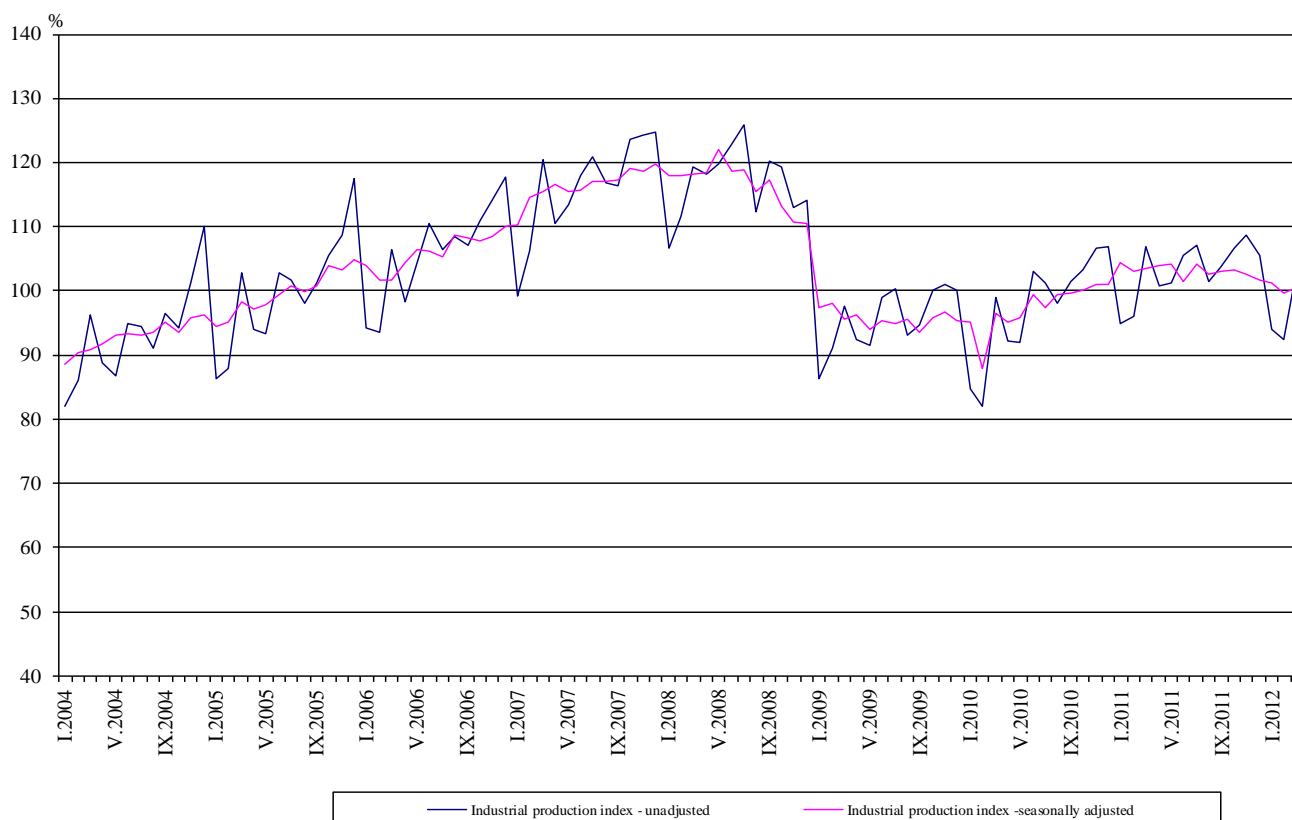


Industrial Production Indices in March 2012¹

The preliminary data showed that the Industrial Production Index², seasonally adjusted^{3,5}, increased by 1.0% in March 2012 as compared to February 2012.

In March 2012 working day adjusted^{4,5} Industrial Production Index fell by 3.2% as compared to the same month of 2011.

**Figure 1. Industrial Production Indices
(2005=100)**



¹March 2012 data are preliminary.

² Monthly Industrial Production and Industrial turnover indices measure changes in **production and turnover values** of industrial enterprises. This information can be used to access the current economic development and for short-term forecasts. Indices do not measure the actual production level, it aims to measure the average change in value of production between two points of time. Indices are compiled on the base of information collected through representative sampling survey on industrial enterprises. The sample covers enterprises with annual turnover more than 97% of total turnover in industry. Industrial production indices are calculated at constant base year (2005) that is to say they are weighted with the structure of the value added at factor costs in the base year.

³ Seasonal adjustment is a statistical method, which eliminates the seasonal component of time series and it is particularly suitable for long-term comparisons and analysis of the data.

⁴ Working day adjustment is an adjustment for variations caused by calendar effects, different number of calendar and working days in the months, national holidays as well as outliers (for example the presence of more non-working days in May could contribute to the decline in the production in some activities).

⁵ The seasonally and working day adjusted data on Industrial production index for the period 2000-2010 are published on NSI web-site: <http://www.nsi.bg/otrasalen.php?otr=46>

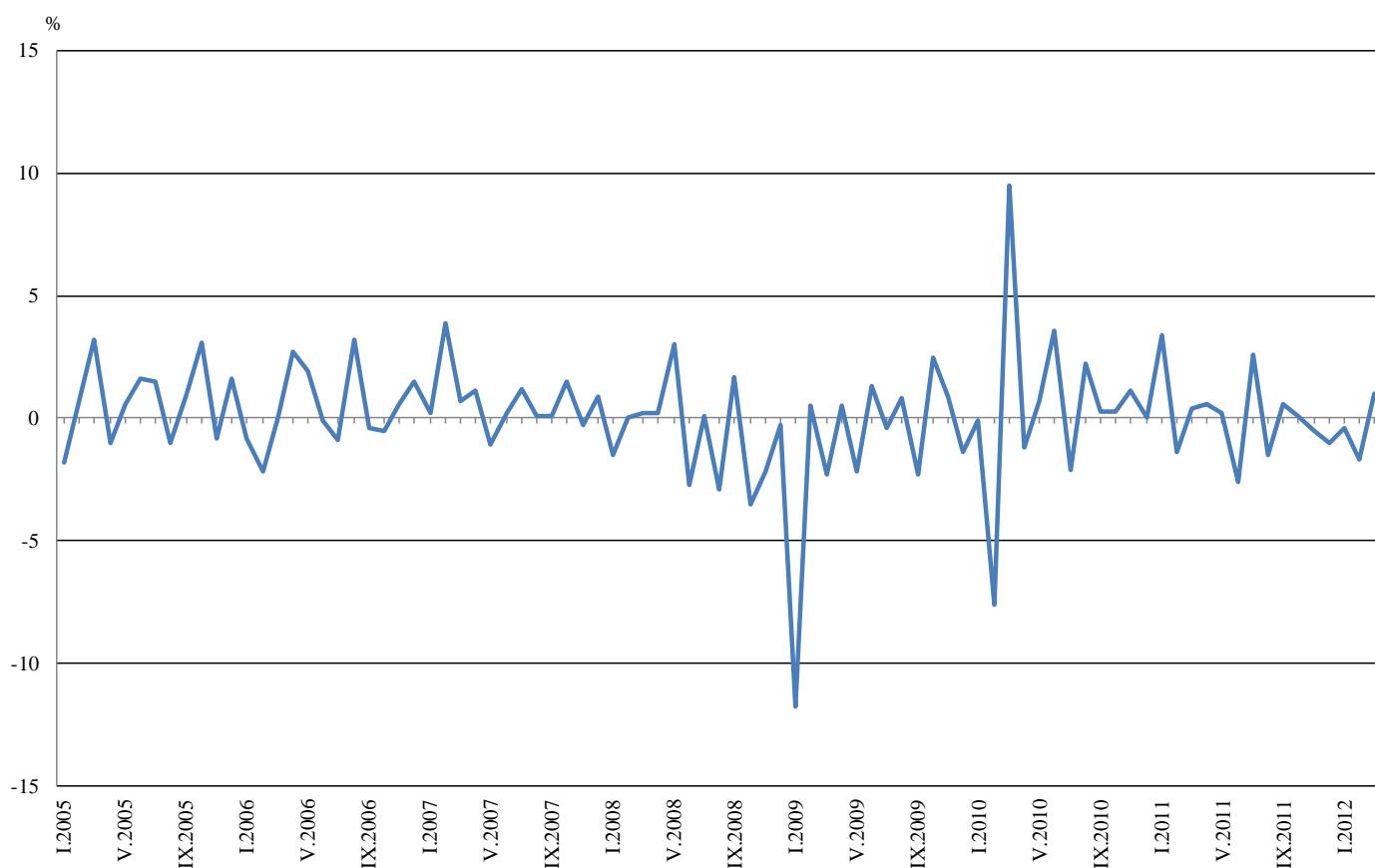


Monthly comparisons

In March 2012 as compared to February 2012, the seasonally adjusted Industrial Production Index in the mining and quarrying industry increased by 5.5%, in the manufacturing by 4.0%, while in the electricity, gas, steam and air conditioning supply a decrease by 9.9% was registered.

The most significant increases of production in the manufacturing were seen in the manufacture of other non-metallic mineral products by 34.0%, in the manufacture of paper and paper products by 25.0%, in the manufacture of chemicals and chemical products by 15.1%, in the manufacture of beverages by 9.6%, in the manufacture of electrical equipment by 6.8%. There was decrease in the manufacture of basic metals by 27.1%, in the repair and installation of machinery and equipment by 10.9%, in the manufacture of basic pharmaceutical products and pharmaceutical preparations by 2.8%.

Figure 2. Percentage changes of Industrial Production Indices compared to the previous month (seasonally adjusted)



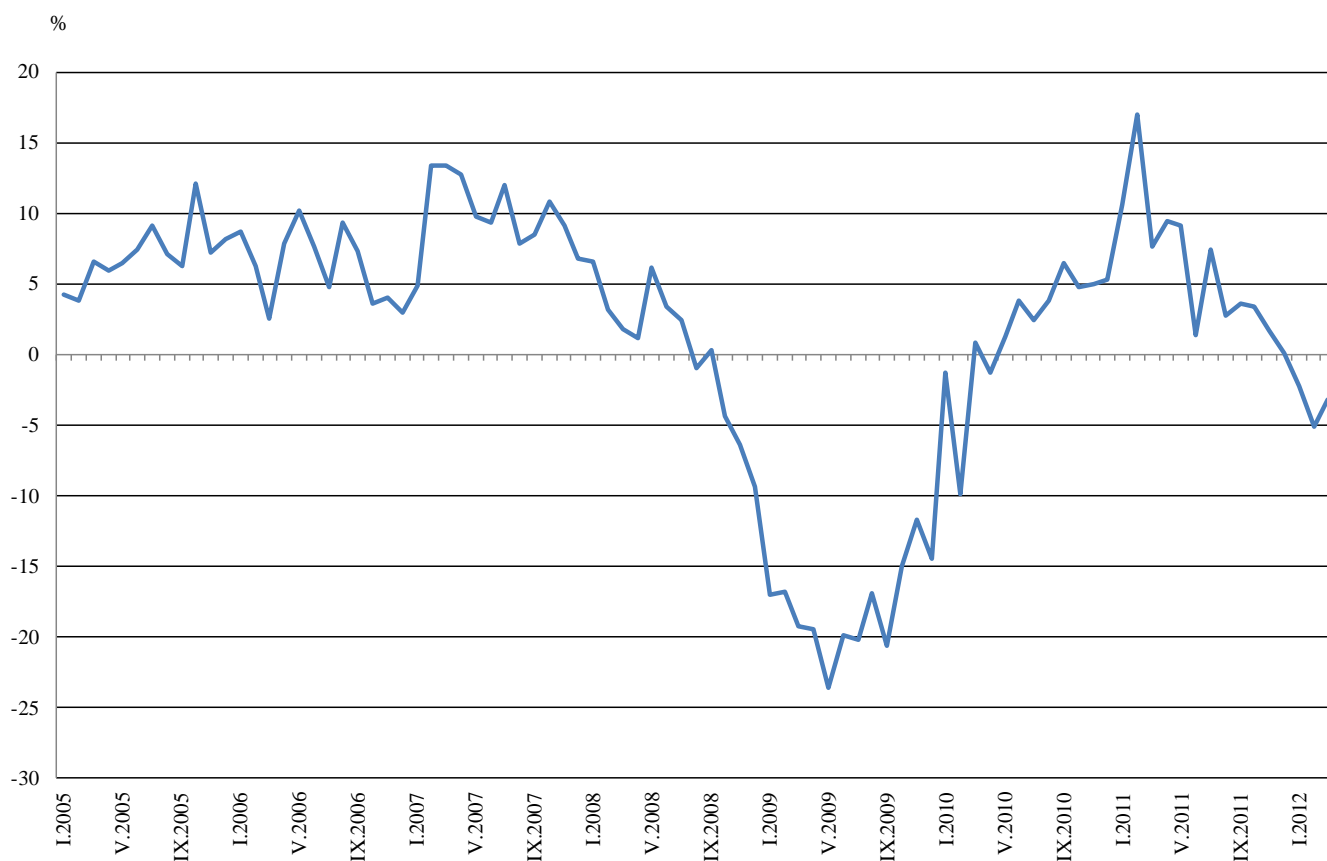


Annual comparisons

On annual bases in March 2012 Industrial Production Index, calculated from working day adjusted data in the electricity, gas, steam and air conditioning supply decreased by 14.3% and in the manufacturing by 0.1%, while in the mining and quarrying industry an increase by 3.6% was seen.

Decreases were registered in the production of energy by 10.9% and in the production of intermediate goods by 4.4%, while the production of investment goods increased by 7.6%.

Figure 3. Percentage changes of Industrial Production Indices compared to the same month of the previous year
(working day adjusted)



The final data on Industrial Production and Turnover Indices for February 2012 can be found in NSI internet web-site: (<http://www.nsi.bg/otrasalen.php?otr=46>).



Table 1

Percentage changes of Industrial Production Indices compared to the previous month*

Economic Activities	NACE.BG - 2008 Code	2011			2012		
		X	XI	XII	I	II	III
Industry	B_TO_E36	0.1	-0.5	-1.0	-0.4	-1.7	1.0
Mining and quarrying	B	0.1	-10.0	18.7	-8.7	-5.4	5.5
of which:							
Mining of coal and lignite	B05	-3.8	5.5	-1.5	-13.5	3.4	7.9
Mining of metal ores	B07	-3.8	-39.7	89.6	-16.5	-10.1	10.4
Other mining and quarrying	B08	13.1	-9.7	4.6	-2.9	-12.5	19.4
Manufacturing	C	-0.9	-0.8	-2.7	1.9	-2.8	4.0
of which:							
Manufacture of food products	C10	1.0	-2.7	-1.4	0.2	7.0	1.0
Manufacture of beverages	C11	-3.2	-7.8	-2.8	2.5	2.4	9.6
Manufacture of tobacco products	C12	-1.4	21.5	-6.7	8.3	4.9	-0.7
Manufacture of textiles	C13	-8.3	5.1	-1.9	-3.3	-3.8	2.6
Manufacture of wearing apparel	C14	-3.2	-5.2	0.3	3.3	-4.7	4.0
Manufacture of leather and related products	C15	-6.7	-4.8	-2.2	0.0	-8.3	3.6
Manufacture of wood and of products of wood and cork, except furniture; manufacture of articles of straw and plaiting materials	C16	-0.9	-3.2	7.1	-6.7	-10.5	6.0
Manufacture of paper and paper products	C17	-14.1	-10.1	-30.7	22.3	20.3	25.0
Printing and reproduction of recorded media	C18	12.1	-2.8	-8.1	3.3	1.0	1.1
Manufacture of chemicals and chemical products	C20	-5.0	-5.0	7.2	2.4	-4.1	15.1
Manufacture of basic pharmaceutical products and pharmaceutical preparations	C21	5.9	2.6	2.1	-9.5	6.6	-2.8
Manufacture of rubber and plastic products	C22	-6.2	-7.3	0.5	9.3	-11.1	4.3
Manufacture of other non-metallic mineral products	C23	0.3	-9.1	-0.1	4.9	-31.3	34.0
Manufacture of basic metals	C24	12.9	4.6	-14.4	14.8	-9.4	-27.1
Manufacture of fabricated metal products, except machinery and equipment	C25	15.5	-12.5	-22.0	11.4	-3.4	1.5
Manufacture of computer, electronic and optical products	C26	4.3	11.2	-17.4	35.4	-10.5	0.5
Manufacture of electrical equipment	C27	1.8	8.8	-2.7	-2.1	2.7	6.8
Manufacture of machinery and equipment n.e.c.	C28	-2.2	1.7	-6.9	13.6	1.2	5.5
Manufacture of motor vehicles, trailers and semi-trailers	C29	15.8	-3.8	-11.1	-0.1	13.3	-1.0
Manufacture of other transport equipment	C30	-20.2	37.9	-37.5	82.4	-9.9	6.6
Manufacture of furniture	C31	2.0	-4.4	-0.6	-3.6	-10.6	5.4
Other manufacturing	C32	-0.6	-5.0	-1.6	42.7	-27.7	19.8
Repair and installation of machinery and equipment	C32	-24.7	13.5	-8.5	-0.5	9.3	-10.9
Electricity, gas, steam and air conditioning supply	D	7.0	2.6	-3.9	-1.3	1.7	-9.9
Electricity, gas, steam and air conditioning supply	D35	7.0	2.6	-3.9	-1.3	1.7	-9.9

* Seasonally adjusted.

Percentage changes of Industrial Production Indices compared to the same month of the previous year *

Economic Activities	NACE.BG - 2008 Code	2011			2012		
		X	XI	XII	I	II	III
Industry	B_TO_E36	3.4	1.7	0.1	-2.2	-5.1	-3.2
Mining and quarrying	B	12.0	-7.2	23.4	0.0	3.3	3.6
of which:							
Mining of coal and lignite	B05	7.5	18.2	22.3	-5.8	-5.5	3.9
Mining of metal ores	B07	18.1	-43.1	27.8	1.0	21.3	7.3
Other mining and quarrying	B08	3.0	-11.5	-5.4	1.9	-25.6	12.5
Manufacturing	C	2.4	-1.0	-2.9	-2.9	-6.9	-0.1
of which:							
Manufacture of food products	C10	-3.2	-9.6	-7.7	-9.9	-3.6	4.6
Manufacture of beverages	C11	7.0	-14.1	-10.5	-14.2	-15.6	6.5
Manufacture of tobacco products	C12	-7.6	21.6	4.9	16.1	21.7	30.0
Manufacture of textiles	C13	-14.4	-3.3	0.2	-12.9	-19.6	-12.3
Manufacture of wearing apparel	C14	-6.8	-12.6	-8.8	-5.7	-15.8	-5.3
Manufacture of leather and related products	C15	-5.2	-10.1	-6.5	-10.9	-13.9	-20.0
Manufacture of wood and of products of wood and cork, except furniture; manufacture of articles of straw and plaiting materials	C16	-7.4	-5.5	6.9	-11.8	-25.8	-9.0
Manufacture of paper and paper products	C17	1.3	-24.4	-46.2	-44.5	-27.0	-4.4
Printing and reproduction of recorded media	C18	2.0	-0.3	-6.4	-7.8	-6.6	-4.1
Manufacture of chemicals and chemical products	C20	0.4	-17.6	15.4	-6.6	-15.0	25.0
Manufacture of basic pharmaceutical products and pharmaceutical preparations	C21	15.6	27.1	29.6	11.2	14.7	6.8
Manufacture of rubber and plastic products	C22	-2.1	-14.4	-9.2	-5.6	-18.9	-10.3
Manufacture of other non-metallic mineral products	C23	16.8	-5.1	0.4	2.9	-30.7	-6.0
Manufacture of basic metals	C24	8.7	26.1	-5.5	12.2	0.4	-24.5
Manufacture of fabricated metal products, except machinery and equipment	C25	27.0	3.1	-2.2	-13.0	6.9	-9.9
Manufacture of computer, electronic and optical products	C26	3.7	22.8	-5.5	21.3	2.4	11.3
Manufacture of electrical equipment	C27	-4.8	15.1	11.0	-1.4	-2.4	6.8
Manufacture of machinery and equipment n.e.c.	C28	5.1	9.1	2.9	12.2	12.7	22.0
Manufacture of motor vehicles, trailers and semi-trailers	C29	-8.4	-3.2	-20.4	-26.6	2.0	-2.5
Manufacture of other transport equipment	C30	7.4	59.8	-40.1	9.9	6.4	16.6
Manufacture of furniture	C31	10.7	-0.7	10.2	-3.1	-15.0	-6.5
Other manufacturing	C32	-0.2	-21.0	-9.1	16.1	-12.7	7.3
Repair and installation of machinery and equipment	C33	-16.4	9.2	-17.1	-11.0	0.6	-2.2
Electricity, gas, steam and air conditioning supply	D	2.6	14.4	4.2	0.3	-4.0	-14.3
Electricity, gas, steam and air conditioning supply	D35	2.6	14.4	4.2	0.3	-4.0	-14.3

* Working day adjusted.



Table 3

Industrial Production Indices
(seasonally adjusted, 2005=100)

NACE.BG - 2008 Code	2011										2012		
	III	IV	V	VI	VII	VIII	IX	X	XI	XII	I	II	III
B_TO_E36	103.4	104.0	104.2	101.5	104.1	102.5	103.1	103.2	102.7	101.7	101.3	99.6	100.6
B	79.3	81.0	88.6	76.0	84.6	81.6	84.1	84.2	75.8	90.0	82.2	77.8	82.1
B05	110.9	149.2	142.7	120.5	114.5	120.6	121.2	116.6	123.0	121.2	104.8	108.4	117.0
B07	68.8	60.4	64.0	55.7	80.0	66.3	79.4	76.4	46.1	87.4	73.0	65.6	72.4
B08	56.1	63.6	67.8	63.2	66.9	65.3	58.1	65.7	59.3	62.0	60.2	52.7	62.9
C	102.1	101.0	102.1	100.6	102.7	100.5	102.7	101.8	101.0	98.3	100.2	97.4	101.3
C10	111.3	113.2	109.5	106.6	110.8	108.1	110.1	111.2	108.2	106.7	106.9	114.4	115.6
C11	85.5	85.6	89.4	83.7	88.9	84.7	88.5	85.7	79.0	76.8	78.7	80.6	88.3
C12	100.8	108.6	99.7	107.2	101.1	99.2	94.6	93.3	113.4	105.8	114.6	120.2	119.4
C13	67.6	72.3	74.4	73.7	66.8	77.7	66.3	60.8	63.9	62.7	60.6	58.3	59.8
C14	69.5	68.6	70.9	68.6	71.9	70.2	69.5	67.3	63.8	64.0	66.1	63.0	65.5
C15	79.6	77.8	79.4	74.9	81.2	81.0	80.5	75.1	71.5	69.9	69.9	64.1	66.4
C16	82.6	83.2	80.1	84.6	88.1	86.1	85.6	84.8	82.1	87.9	82.0	73.4	77.8
C17	141.7	148.7	160.9	151.8	148.4	137.0	134.5	115.5	103.8	71.9	87.9	105.7	132.1
C18	110.4	100.8	105.7	103.6	108.2	99.6	100.1	112.2	109.1	100.3	103.6	104.6	105.7
C20	96.8	107.0	115.6	107.6	106.6	110.4	109.2	103.7	98.5	105.6	108.1	103.7	119.4
C21	93.1	95.6	94.3	96.4	97.7	98.0	96.6	102.3	105.0	107.2	97.0	103.4	100.5
C22	115.9	108.8	122.5	113.6	115.4	115.2	118.3	111.0	102.9	103.4	113.0	100.5	104.8
C23	84.9	86.8	85.7	88.0	87.2	86.0	92.1	92.4	84.0	83.9	88.0	60.5	81.1
C24	101.0	101.8	111.0	108.0	110.2	106.0	96.2	108.6	113.6	97.2	111.6	101.1	73.7
C25	106.8	101.3	112.1	108.0	111.9	100.5	113.0	130.5	114.2	89.1	99.3	95.9	97.3
C26	120.9	114.9	130.8	128.1	142.9	121.6	115.4	120.4	133.9	110.6	149.7	134.0	134.7
C27	155.8	145.9	151.5	152.9	158.9	153.7	142.7	145.3	158.1	153.9	150.7	154.8	165.4
C28	118.2	113.0	126.2	122.7	125.1	117.7	125.4	122.6	124.7	116.1	131.9	133.5	140.9
C29	146.0	130.7	150.7	137.8	153.0	153.5	128.8	149.1	143.5	127.5	127.4	144.3	142.9
C30	92.3	96.4	112.4	77.8	68.3	47.7	78.7	62.8	86.6	54.1	98.7	88.9	94.8
C31	104.7	106.5	108.1	105.7	113.0	117.1	112.7	114.9	109.9	109.2	105.3	94.1	99.2
C32	152.1	128.0	166.7	163.8	169.1	161.6	141.8	140.9	133.8	131.6	187.8	135.8	162.7
C33	101.2	106.6	92.3	89.6	79.9	94.8	131.5	99.0	112.4	102.9	102.4	111.9	99.7
D	121.6	124.7	118.8	114.1	123.3	118.5	110.1	117.8	120.9	116.2	114.7	116.6	105.1
D35	121.6	124.7	118.8	114.1	123.3	118.5	110.1	117.8	120.9	116.2	114.7	116.6	105.1



Table 4

Industrial Production Indices
(working day adjusted, 2005=100)

NACE.BG - 2008 Code	2009	2010	2011										2012		
	III	III	III	IV	V	VI	VII	VIII	IX	X	XI	XII	I	II	III
B_TO_E36	98.0	98.9	106.4	100.1	101.0	104.1	108.8	101.1	103.8	108.5	108.3	103.9	93.2	91.5	103.0
B	70.7	75.6	77.9	77.9	85.2	73.0	83.9	79.5	86.4	94.1	82.0	96.0	76.9	72.7	80.7
B05	91.5	89.3	109.6	121.1	126.6	104.9	109.7	112.2	125.2	140.9	146.8	131.2	108.8	106.4	113.9
B07	61.8	80.3	67.5	65.7	67.0	58.3	78.8	65.9	77.4	79.6	46.6	90.6	73.0	65.6	72.4
B08	88.7	69.1	52.7	62.3	72.8	68.2	70.2	68.9	62.0	74.4	65.1	67.0	42.2	39.6	59.3
C	92.1	95.9	103.1	98.4	102.3	108.6	110.4	101.1	107.2	108.6	106.2	95.7	85.1	83.4	103.0
C10	110.9	109.6	109.2	108.6	105.6	109.5	112.5	112.4	120.1	122.8	115.7	112.3	89.3	98.7	114.2
C11	91.4	85.1	78.0	81.6	94.9	99.9	110.1	108.3	95.5	77.8	75.1	87.2	49.0	52.6	83.1
C12	58.6	96.7	84.1	90.7	102.2	123.0	116.2	115.6	104.1	107.5	136.9	103.7	91.8	89.9	109.3
C13	85.1	72.2	75.4	78.4	81.2	86.1	74.6	63.6	63.7	61.2	67.4	53.3	48.4	55.7	66.1
C14	70.1	68.1	68.4	61.3	64.4	71.5	83.5	70.4	68.5	68.5	63.9	64.5	65.6	60.3	64.8
C15	79.5	79.3	84.8	66.0	69.2	79.6	95.2	78.6	84.3	77.7	70.0	65.2	68.6	63.6	67.8
C16	63.8	79.9	82.0	82.1	77.3	91.2	96.2	89.9	93.2	93.6	87.8	83.4	62.9	56.8	74.6
C17	77.0	110.6	144.3	150.9	161.6	166.1	157.1	139.1	139.9	112.9	101.9	69.5	80.7	96.2	137.9
C18	103.0	107.6	103.8	95.2	99.6	108.3	108.3	103.9	106.2	124.6	118.1	113.3	85.2	91.3	99.5
C20	71.7	97.0	105.8	111.7	113.3	112.7	108.0	104.6	110.2	100.9	101.8	104.3	100.3	97.1	132.2
C21	79.4	86.6	98.5	91.7	90.8	109.5	84.1	97.6	95.5	114.7	115.7	110.0	75.6	103.6	105.2
C22	107.5	106.7	117.7	107.9	115.7	122.9	127.6	117.9	124.6	124.4	109.3	97.9	90.6	83.9	105.6
C23	97.0	72.8	83.6	89.4	92.8	99.9	95.6	90.1	102.1	103.8	88.5	72.4	60.5	48.3	78.6
C24	108.2	106.3	110.4	104.3	119.3	108.6	120.1	101.5	88.1	118.1	117.3	76.1	105.8	97.0	83.3
C25	86.8	100.6	110.4	102.5	107.5	116.6	116.8	100.5	116.4	129.4	120.2	105.6	70.9	84.9	99.5
C26	88.1	96.5	124.9	112.6	123.2	134.4	142.6	110.8	123.2	122.3	139.4	138.1	128.0	114.7	139.0
C27	121.3	145.1	159.4	133.5	140.0	158.8	170.8	139.8	150.9	163.8	181.5	147.4	136.1	142.8	170.2
C28	106.7	106.8	123.4	109.6	123.3	135.7	136.1	108.6	129.9	131.3	132.5	112.1	111.3	126.4	150.5
C29	92.3	173.0	154.8	132.6	155.7	149.3	149.8	137.2	127.3	157.3	158.5	120.1	114.7	133.6	151.0
C30	66.7	84.9	89.4	83.5	171.3	81.5	74.7	49.5	86.3	52.2	81.5	59.4	57.7	70.3	104.2
C31	103.1	99.4	106.6	102.0	105.0	110.4	117.0	118.5	115.2	126.2	119.7	114.1	86.8	81.2	99.7
C32	117.5	144.3	149.4	123.9	164.7	186.0	169.1	164.4	152.6	163.0	142.8	121.7	151.8	117.1	160.3
C33	85.6	121.6	101.4	97.4	87.4	93.8	81.7	93.3	141.3	102.7	121.7	140.7	70.2	93.9	99.2
D	130.7	120.4	133.5	117.7	102.3	100.5	115.3	108.1	97.2	113.4	129.3	140.9	131.7	129.7	114.4
D35	130.7	120.4	133.5	117.7	102.3	100.5	115.3	108.1	97.2	113.4	129.3	140.9	131.7	129.7	114.4