

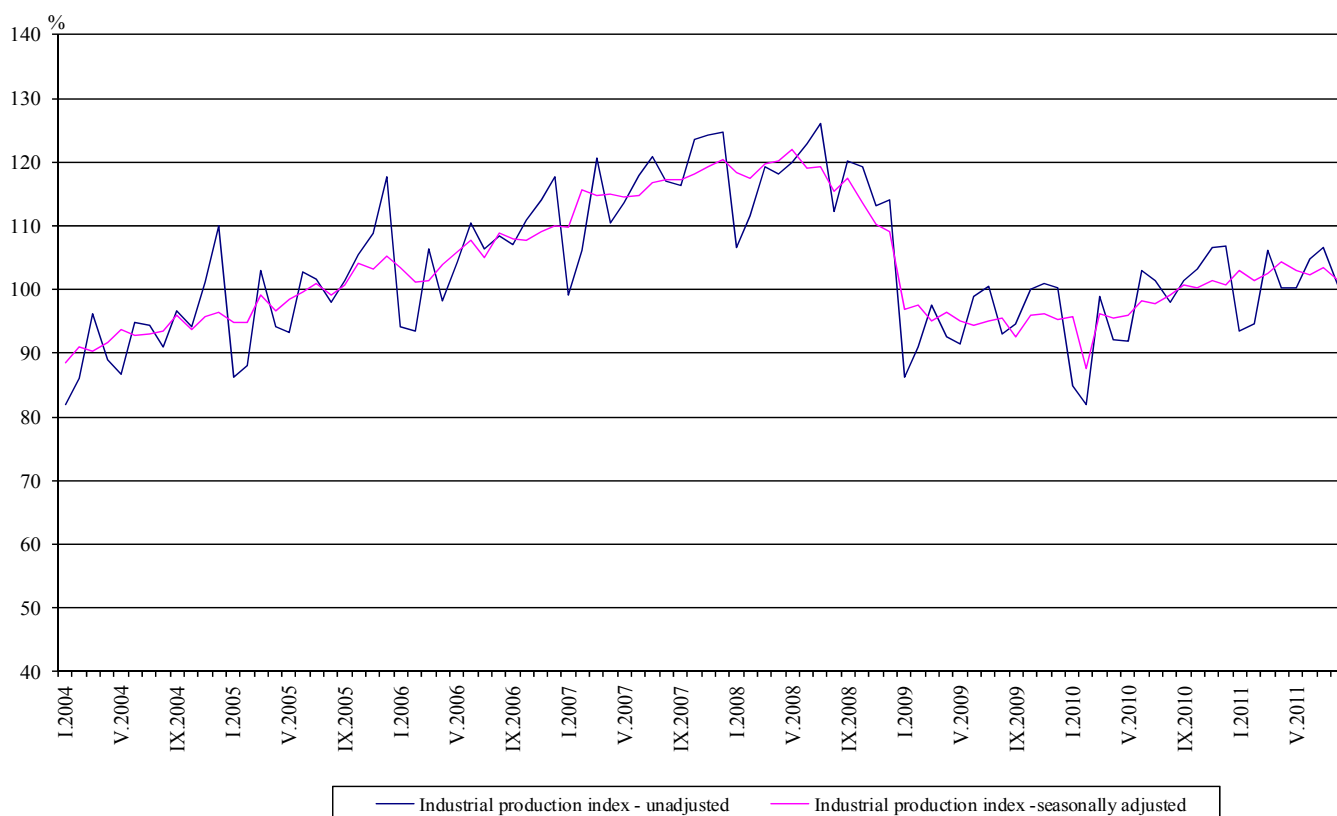


Industrial Production Indices in August 2011¹

The preliminary data showed that the Industrial Production Index², seasonally adjusted³, decreased by 2.0% in August 2011 as compared to July 2011.

In August 2011 working day adjusted⁴ Industrial Production Index rose by 1.0% as compared to the same month of 2010.

Figure 1. Industrial Production Indices (2005=100)



¹August 2011 data are preliminary.

² Monthly Industrial Production and Industrial turnover indices measure changes in **production and turnover values** of industrial enterprises. This information can be used to assess the current economic development and for short-term forecasts. Indices do not measure the actual production level, it aims to measure the average change in value of production between two points of time

Indices are compiled on the base of information collected through representative sampling survey on industrial enterprises. The sample covers enterprises with annual turnover more than 97% of total turnover in industry.

Industrial production indices are calculated at constant base year (2005) that is to say they are weighted with the structure of the value added at factor costs in the base year.

³ **Seasonal adjustment** is a statistical method, which eliminates the seasonal component of time series and it is particularly suitable for long-term comparisons and analysis of the data.

⁴ **Working day adjustment** is an adjustment for variations caused by calendar effects, different number of calendar and working days in the months, national holidays and outliers (for example the presence of more non-working days in May could contribute to the decline in the production in some activities).

The seasonally and working day adjusted data on Industrial production index for the period 2000-2010 can be found in NSI internet web-site: (<http://www.nsi.bg/otrasalen.php?otr=46>).

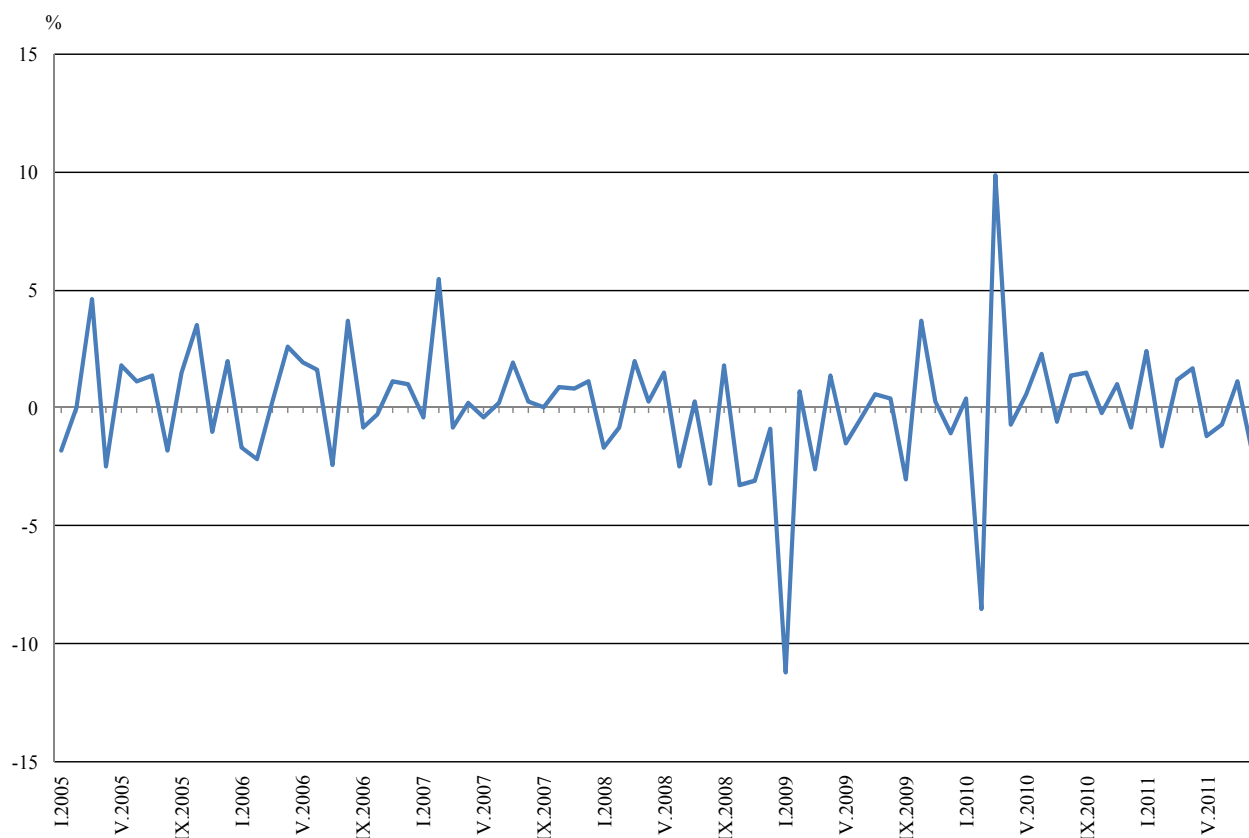


Monthly comparisons

In August 2011 as compared to July 2011, the seasonally adjusted Industrial Production Index in the electricity, gas, steam and air conditioning supply decreased by 6.2%, in the mining and quarrying industry by 5.8% and in the manufacturing by 3.5%.

The most significant decreases of production in the manufacturing were seen in the manufacture of fabricated metal products, except machinery and equipment by 11.8%, in the printing and reproduction of recorded media by 10.6%, in the manufacture of paper and paper products by 7.8%, in the manufacture of basic metals by 5.6%. There was increase in the manufacture of textiles by 20.1%, in the manufacture of furniture by 2.4%, in the manufacture of rubber and plastic products by 1.7%.

Figure 2. Percentage changes of Industrial Production Indices compared to the previous month
(Seasonally adjusted)



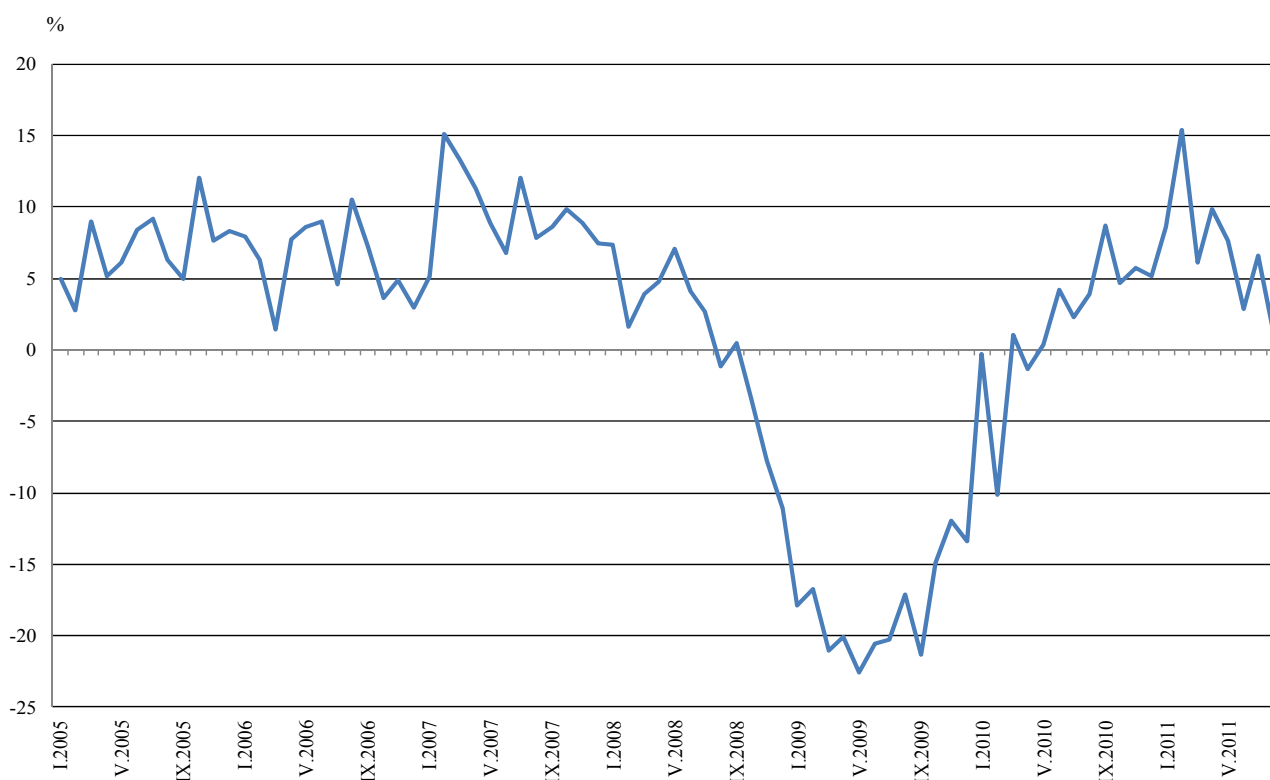


Annual comparisons

On annual bases in August 2011 Industrial Production Index, calculated from working day adjusted data in the mining and quarrying industry grew by 7.1%, in the manufacturing by 1.0%, while in the electricity, gas, steam and air conditioning supply a decrease by 0.6% was seen.

Increases were registered in the production of intermediate goods by 4.1% and in the production of energy by 3.3%, while the production of investment goods went down by 11.4%.

Figure 3. Percentage changes of Industrial Production Indices compared to the same month of the previous year
(Working day adjusted)



The final data on Industrial Production and Turnover Indices for July 2011 can be found in NSI internet web-site: (<http://www.nsi.bg/otrasalen.php?otr=46>).



Table 1

Percentage changes of Industrial Production Indices compared to the previous month¹

Economic Activities	NACE.BG 2008 Code	2011					
		III	IV	V	VI	VII	VIII
Industry	B_TO_E36	1.2	1.7	-1.2	-0.7	1.1	-2.0
Mining and quarrying	B	12.0	1.4	10.0	-13.6	11.4	-5.8
of which:							
Mining of coal and lignite	B05	7.7	15.8	5.0	-14.8	-4.8	7.7
Mining of metal ores	B07	6.8	-7.9	-0.2	-7.2	41.8	-18.1
Other mining and quarrying	B08	-14.7	12.6	5.4	-4.8	6.3	-4.3
Manufacturing	C	-0.3	1.0	1.6	0.6	-0.2	-3.5
of which:							
Manufacture of food products	C10	-6.7	0.8	-3.7	1.1	2.3	-2.2
Manufacture of beverages	C11	-9.5	2.8	-0.9	-1.7	5.2	-5.2
Manufacture of tobacco products	C12	-8.8	3.9	-6.0	10.3	-8.5	-2.6
Manufacture of textiles	C13	-4.6	11.6	0.7	2.3	-11.5	20.1
Manufacture of wearing apparel	C14	-5.2	2.8	0.4	1.7	1.4	-1.5
Manufacture of leather and related products	C15	3.2	-1.7	1.6	1.8	1.4	-2.7
Manufacture of wood and of products of wood and cork, except furniture; manufacture of articles of straw and plaiting materials	C16	-4.9	3.6	-7.7	10.7	2.6	-2.4
Manufacture of paper and paper products	C17	6.7	1.0	8.2	-0.2	-4.9	-7.8
Printing and reproduction of recorded media	C18	-2.9	-8.3	5.4	0.9	2.1	-10.6
Manufacture of chemicals and chemical products	C20	-15.9	6.6	9.5	-6.2	0.3	1.4
Manufacture of basic pharmaceutical products and pharmaceutical preparations	C21	0.7	5.3	-3.6	7.5	-1.5	-1.8
Manufacture of rubber and plastic products	C22	-4.1	-5.5	13.6	-4.3	-2.9	1.7
Manufacture of other non-metallic mineral products	C23	-3.1	-4.6	0.6	5.2	-3.9	-4.7
Manufacture of basic metals	C24	0.7	4.5	10.2	-6.2	4.1	-5.6
Manufacture of fabricated metal products, except machinery and equipment	C25	20.4	-2.0	2.3	0.4	4.6	-11.8
Manufacture of computer, electronic and optical products	C26	-8.2	-6.4	11.7	5.7	5.6	-10.5
Manufacture of electrical equipment	C27	-2.4	-0.9	1.3	5.9	-1.2	-1.8
Manufacture of machinery and equipment n.e.c.	C28	3.5	-3.2	7.9	0.6	-3.0	-5.6
Manufacture of motor vehicles, trailers and semi-trailers	C29	-0.3	-0.1	3.6	-2.8	0.9	-2.9
Manufacture of other transport equipment	C30	2.7	1.8	26.0	-34.5	-12.7	-35.4
Manufacture of furniture	C31	-2.3	0.9	3.1	2.8	2.3	2.4
Other manufacturing	C32	-3.6	-5.9	17.9	4.1	4.9	-11.4
Repair and installation of machinery and equipment	C32	-10.6	7.0	-15.6	-2.8	-10.2	11.2
Electricity, gas, steam and air conditioning supply	D	1.1	5.8	-6.3	-2.9	8.7	-6.2
Electricity, gas, steam and air conditioning supply	D35	1.1	5.8	-6.3	-2.9	8.7	-6.2

¹ Seasonally adjusted.



Table 2

Percentage changes of Industrial Production Indices compared to the same month of the previous year¹

Economic Activities	NACE.BG 2008 Code	2011					
		III	IV	V	VI	VII	VIII
Industry	B_TO_E36	6.1	9.8	7.6	2.9	6.6	1.0
Mining and quarrying	B	3.2	16.1	20.9	-4.7	10.5	7.1
of which:							
Mining of coal and lignite	B05	25.1	101.6	64.5	17.5	12.7	20.0
Mining of metal ores	B07	-13.7	-26.2	-13.3	-25.8	5.7	-12.9
Other mining and quarrying	B08	-22.9	7.8	1.5	-5.6	7.6	4.6
Manufacturing	C	7.7	5.8	5.6	5.7	6.4	1.0
of which:							
Manufacture of food products	C10	-0.6	3.2	-11.3	-10.0	-4.8	-7.2
Manufacture of beverages	C11	-7.8	0.4	-0.7	-3.8	3.7	-6.5
Manufacture of tobacco products	C12	-9.5	26.2	1.7	9.2	-2.2	0.3
Manufacture of textiles	C13	3.5	7.2	10.0	16.1	-6.7	26.7
Manufacture of wearing apparel	C14	0.6	3.9	2.8	7.7	4.8	5.0
Manufacture of leather and related products	C15	9.2	1.8	13.2	0.7	7.4	-2.9
Manufacture of wood and of products of wood and cork, except furniture; manufacture of articles of straw and plaiting materials	C16	3.8	5.1	-1.6	6.2	2.8	1.6
Manufacture of paper and paper products	C17	32.4	34.2	33.8	9.6	18.8	-4.1
Printing and reproduction of recorded media	C18	-4.7	-15.1	-10.1	6.0	4.9	-8.2
Manufacture of chemicals and chemical products	C20	9.5	19.1	28.9	23.8	14.4	9.0
Manufacture of basic pharmaceutical products and pharmaceutical preparations	C21	15.0	15.1	4.4	16.5	16.3	13.8
Manufacture of rubber and plastic products	C22	10.5	2.6	9.8	6.3	-0.6	4.5
Manufacture of other non-metallic mineral products	C23	16.9	13.4	0.6	0.8	9.2	2.8
Manufacture of basic metals	C24	0.5	1.7	16.7	13.3	12.8	7.7
Manufacture of fabricated metal products, except machinery and equipment	C25	11.7	18.9	16.5	7.8	19.5	2.7
Manufacture of computer, electronic and optical products	C26	23.3	3.6	32.5	31.3	29.6	12.9
Manufacture of electrical equipment	C27	6.3	9.1	5.1	16.1	13.8	10.3
Manufacture of machinery and equipment n.e.c.	C28	22.8	13.3	23.0	19.5	18.1	2.8
Manufacture of motor vehicles, trailers and semi-trailers	C29	-12.2	-14.7	-1.2	-11.5	9.2	8.3
Manufacture of other transport equipment	C30	2.8	9.6	25.5	-11.4	-11.4	-67.3
Manufacture of furniture	C31	10.2	12.4	15.7	16.3	19.5	18.5
Other manufacturing	C32	-5.0	-8.4	13.2	26.7	45.4	18.7
Repair and installation of machinery and equipment	C33	-15.8	-6.4	-4.2	-22.6	-30.4	-31.9
Electricity, gas, steam and air conditioning supply	D	7.6	18.3	12.6	-3.1	7.3	-0.6
Electricity, gas, steam and air conditioning supply	D35	7.6	18.3	12.6	-3.1	7.3	-0.6

¹ Working day adjusted.



Table 3

Industrial Production Indices
(Seasonally adjusted, 2005=100)

NACE.BG 2008 Code	2010					2011							
	VIII	IX	X	XI	XII	I	II	III	V	V	VI	VII	VIII
B_TO_E36	99.1	100.6	100.4	101.4	100.6	103.0	101.4	102.6	104.3	103.0	102.3	103.4	101.3
B	72.8	80.0	83.0	87.7	79.3	79.3	68.9	77.2	78.3	86.1	74.4	82.9	78.1
B05	102.3	102.2	107.5	105.7	99.5	103.5	107.1	115.4	133.6	140.3	119.6	113.8	122.6
B07	74.8	77.8	64.0	78.4	70.1	86.8	62.0	66.2	61.0	60.9	56.5	80.1	65.6
B08	62.2	69.4	65.2	66.4	65.0	64.3	66.1	56.4	63.5	66.9	63.7	67.7	64.8
C	98.9	101.3	101.4	103.8	91.3	106.9	100.9	100.6	101.6	103.2	103.8	103.6	100.0
C10	117.7	122.5	115.6	121.3	114.6	118.6	119.1	111.1	112.0	107.9	109.1	111.6	109.2
C11	90.3	91.1	81.6	89.8	82.9	91.7	94.3	85.3	87.7	86.9	85.4	89.8	85.1
C12	95.4	89.1	91.3	95.4	101.2	114.7	112.1	102.2	106.2	99.8	110.1	100.7	98.1
C13	66.3	69.6	67.9	66.1	63.3	69.5	69.8	66.6	74.3	74.8	76.5	67.7	81.3
C14	68.1	71.7	71.5	70.8	69.0	70.8	71.4	67.7	69.6	69.9	71.1	72.1	71.0
C15	78.6	79.2	78.1	77.7	77.7	76.3	75.9	78.3	77.0	78.2	79.6	80.7	78.5
C16	86.6	88.3	93.0	84.5	83.3	88.3	87.4	83.1	86.1	79.5	88.0	90.3	88.1
C17	146.5	140.1	108.2	134.6	131.4	150.0	138.2	147.4	148.9	161.1	160.7	152.9	141.0
C18	105.0	120.1	112.9	111.7	106.7	112.9	112.3	109.0	99.9	105.3	106.3	108.5	97.0
C20	102.7	104.5	103.5	118.3	94.7	117.2	120.8	101.6	108.3	118.6	111.2	111.5	113.1
C21	85.4	92.4	91.8	84.2	85.5	84.0	89.6	90.2	95.0	91.6	98.5	97.0	95.3
C22	112.1	120.9	112.1	119.0	114.2	120.6	119.9	115.0	108.7	123.5	118.2	114.8	116.8
C23	80.4	82.6	78.9	85.6	75.5	88.7	92.6	89.7	85.6	86.1	90.6	87.1	83.0
C24	96.4	99.6	101.1	92.6	92.9	105.2	98.1	98.8	103.2	113.7	106.6	111.0	104.8
C25	97.4	102.1	106.6	110.3	88.0	113.2	90.0	108.4	106.2	108.6	109.0	114.0	100.5
C26	110.7	103.8	115.1	114.8	118.1	126.8	130.8	120.1	112.4	125.6	132.8	140.3	125.6
C27	140.1	148.5	146.1	140.9	141.6	153.5	156.4	152.7	151.3	153.2	162.3	160.3	157.4
C28	113.4	112.9	115.7	113.1	108.3	113.7	118.9	123.1	119.2	128.6	129.4	125.5	118.5
C29	154.5	161.6	161.6	162.9	164.7	157.8	151.1	150.6	150.5	155.9	151.6	152.9	148.5
C30	112.1	69.9	55.3	60.2	70.6	110.7	92.5	95.0	96.7	121.8	79.8	69.7	45.0
C31	99.0	111.9	105.7	109.4	98.5	108.6	106.5	104.0	104.9	108.1	111.1	113.6	116.3
C32	124.1	134.9	139.7	165.5	146.3	167.8	143.6	138.4	130.2	153.5	159.8	167.6	148.5
C33	130.7	99.4	119.7	104.1	124.7	117.5	113.8	101.7	108.8	91.8	89.2	80.1	89.1
D	114.7	109.2	115.4	103.9	107.4	106.5	115.1	116.4	123.1	115.4	112.1	121.9	114.4
D35	114.7	109.2	115.4	103.9	107.4	106.5	115.1	116.4	123.1	115.4	112.1	121.9	114.4



Table 4

Industrial Production Indices
(Working day adjusted, 2005=100)

NACE.BG 2008 Code	2008	2009	2010					2011							
	VIII	VIII	VIII	IX	X	XI	XII	I	II	III	IV	V	VI	VII	VIII
B_TO_E36	114.1	94.6	98.3	103.5	105.0	107.4	107.1	94.9	95.0	105.3	101.9	103.4	105.3	108.2	99.3
B	88.0	71.7	73.3	80.5	83.6	88.2	79.8	79.8	69.3	77.7	78.8	86.6	74.8	83.3	78.5
B05	97.8	66.2	94.3	106.7	129.3	125.4	110.2	117.1	112.1	112.7	113.9	131.9	108.3	108.2	113.2
B07	81.3	85.0	73.1	77.9	69.0	80.9	73.5	75.9	53.4	68.0	67.2	70.5	61.1	80.3	63.7
B08	121.9	83.6	64.6	77.0	72.8	74.3	71.9	41.6	53.3	53.6	62.2	74.2	68.5	70.8	67.6
C	118.4	94.3	99.3	107.2	105.9	108.6	103.3	88.4	89.2	104.0	99.9	107.6	111.5	110.2	100.3
C10	128.6	113.9	121.7	136.3	126.5	130.7	126.9	100.2	102.4	110.6	108.5	112.5	112.0	112.6	112.9
C11	159.0	120.5	114.8	98.3	73.8	88.3	102.3	57.8	62.4	78.8	86.0	98.0	101.7	111.6	107.3
C12	70.6	143.1	115.6	112.4	117.4	113.0	104.6	80.3	73.7	87.2	91.4	108.4	126.7	117.0	115.9
C13	68.1	52.7	50.9	70.0	70.3	71.7	58.8	57.0	69.0	76.1	81.7	89.3	90.8	73.5	64.5
C14	94.3	70.9	66.3	72.6	73.8	74.1	75.8	70.2	71.7	69.0	63.9	68.9	74.0	83.7	69.6
C15	111.8	65.2	76.9	89.0	84.8	76.0	71.7	75.7	74.1	84.1	69.7	70.5	81.3	98.2	74.7
C16	111.6	70.2	88.3	96.5	100.6	93.3	82.4	72.0	76.3	82.9	84.7	81.0	93.9	95.8	89.7
C17	96.3	70.5	147.3	145.0	111.5	137.6	133.4	144.4	130.3	149.2	149.6	164.8	166.4	156.8	141.2
C18	114.0	107.6	110.7	134.3	123.0	121.8	128.0	93.7	97.7	104.4	96.6	108.1	111.6	108.9	101.6
C20	121.9	68.2	96.4	107.2	99.9	125.0	93.6	106.7	114.1	107.1	109.9	118.8	115.5	112.2	105.1
C21	108.1	79.0	84.2	97.6	101.0	91.7	91.2	72.6	90.9	99.5	96.0	98.2	114.8	85.4	95.8
C22	143.1	105.4	114.0	129.7	125.7	129.3	114.3	97.4	102.9	118.7	108.1	124.8	128.3	126.4	119.1
C23	158.3	88.7	86.5	94.2	90.5	94.2	72.9	58.5	70.0	85.6	87.8	95.3	100.2	97.1	88.9
C24	91.9	92.6	93.5	95.2	107.5	94.4	77.8	94.5	96.5	108.5	103.9	115.9	106.3	118.9	100.7
C25	123.2	88.9	98.4	106.9	103.7	116.9	112.4	81.5	79.6	112.1	107.5	110.2	117.9	118.7	101.1
C26	90.2	82.9	98.9	113.8	115.1	119.3	156.6	106.9	109.5	124.0	108.5	129.1	136.6	136.7	111.7
C27	149.3	114.8	125.7	173.6	170.7	160.3	146.8	142.8	145.8	155.3	146.5	154.4	169.7	169.1	138.7
C28	122.8	86.8	106.1	120.2	124.1	122.2	116.9	97.1	109.6	131.2	117.5	132.3	142.7	135.2	109.1
C29	110.2	99.0	123.6	160.6	169.9	162.1	158.2	156.5	130.4	150.0	139.5	160.2	154.6	147.8	133.8
C30	170.9	194.8	147.3	78.3	49.7	54.1	93.8	56.2	65.6	91.9	76.8	179.9	80.0	76.2	48.2
C31	145.1	91.8	97.8	119.0	114.1	120.9	112.8	91.9	95.1	108.8	103.9	114.9	117.8	117.1	115.9
C32	132.2	158.7	122.7	150.7	164.2	183.3	143.0	133.9	124.2	137.8	126.7	164.8	179.0	167.2	145.6
C33	130.6	100.9	131.6	103.3	124.7	111.0	170.5	80.6	93.7	101.7	100.1	86.5	94.3	83.2	89.6
D	109.8	102.8	103.8	99.1	111.4	112.8	134.6	125.6	128.5	129.2	115.6	97.5	96.9	112.0	103.2
D35	109.8	102.8	103.8	99.1	111.4	112.8	134.6	125.6	128.5	129.2	115.6	97.5	96.9	112.0	103.2