

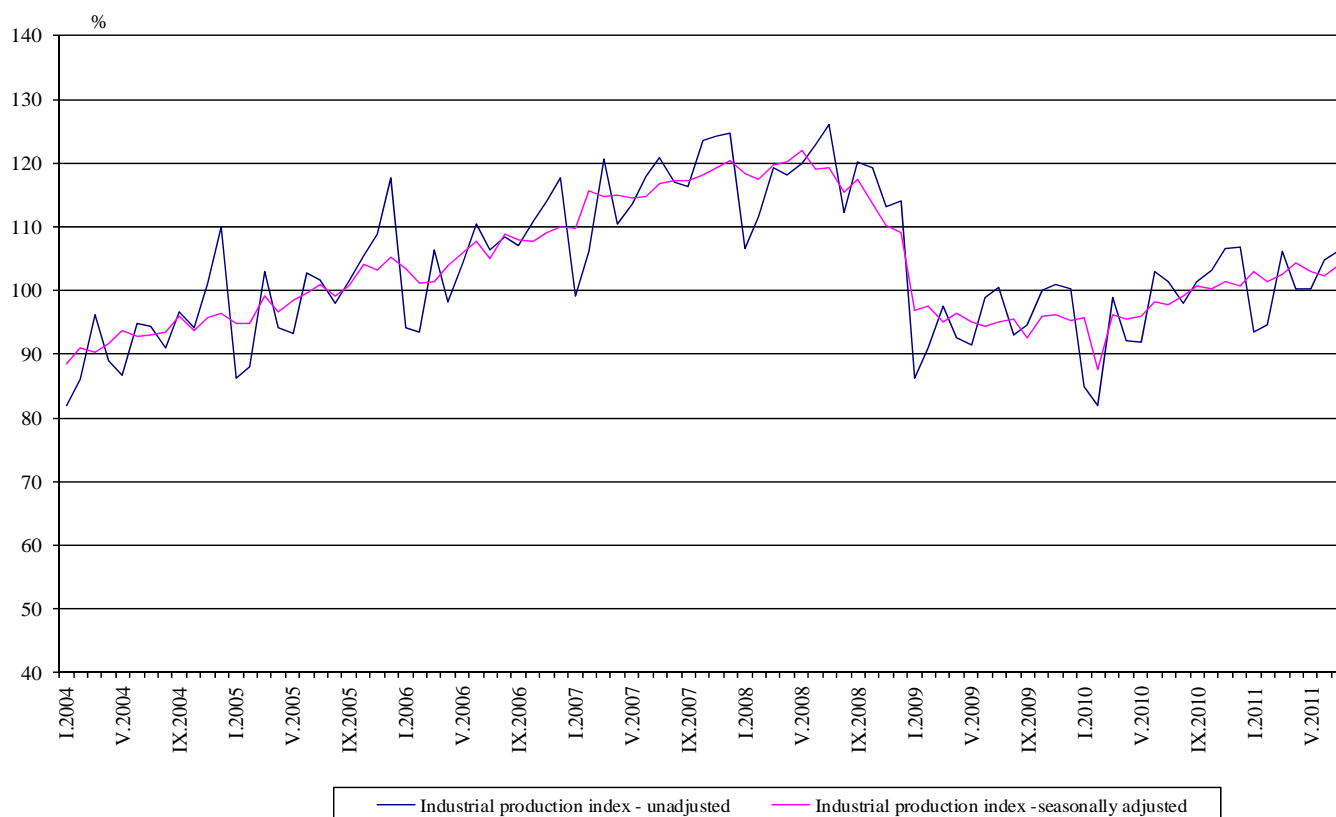


Industrial Production Indices in July 2011¹

The preliminary data showed that the Industrial Production Index², seasonally adjusted³, increased by 1.5% in July 2011 as compared to June 2011.

In July 2011 working day adjusted⁴ Industrial Production Index rose by 6.2% as compared to the same month of 2010.

Figure 1. Industrial Production Indices
(2005=100)



¹July 2011 data are preliminary.

² Monthly Industrial Production and Industrial turnover indices measure changes in **production and turnover values** of industrial enterprises. This information can be used to access the current economic development and for short-term forecasts. Indices do not measure the actual production level, it aims to measure the average change in value of production between two points of time

Indices are compiled on the base of information collected through representative sampling survey on industrial enterprises. The sample covers enterprises with annual turnover more than 97% of total turnover in industry.

Industrial production indices are calculated at constant base year (2005) that is to say they are weighted with the structure of the value added at factor costs in the base year.

³ **Seasonal adjustment** is a statistical method, which eliminates the seasonal component of time series and it is particularly suitable for long-term comparisons and analysis of the data.

⁴ **Working day adjustment** is an adjustment for variations caused by calendar effects, different number of calendar and working days in the months, national holidays and outliers (for example the presence of more non-working days in May could contribute to the decline in the production in some activities).

The seasonally and working day adjusted data on Industrial production index for the period 2000-2010 can be found in NSI internet web-site: (<http://www.nsi.bg/otrasalen.php?otr=46>).

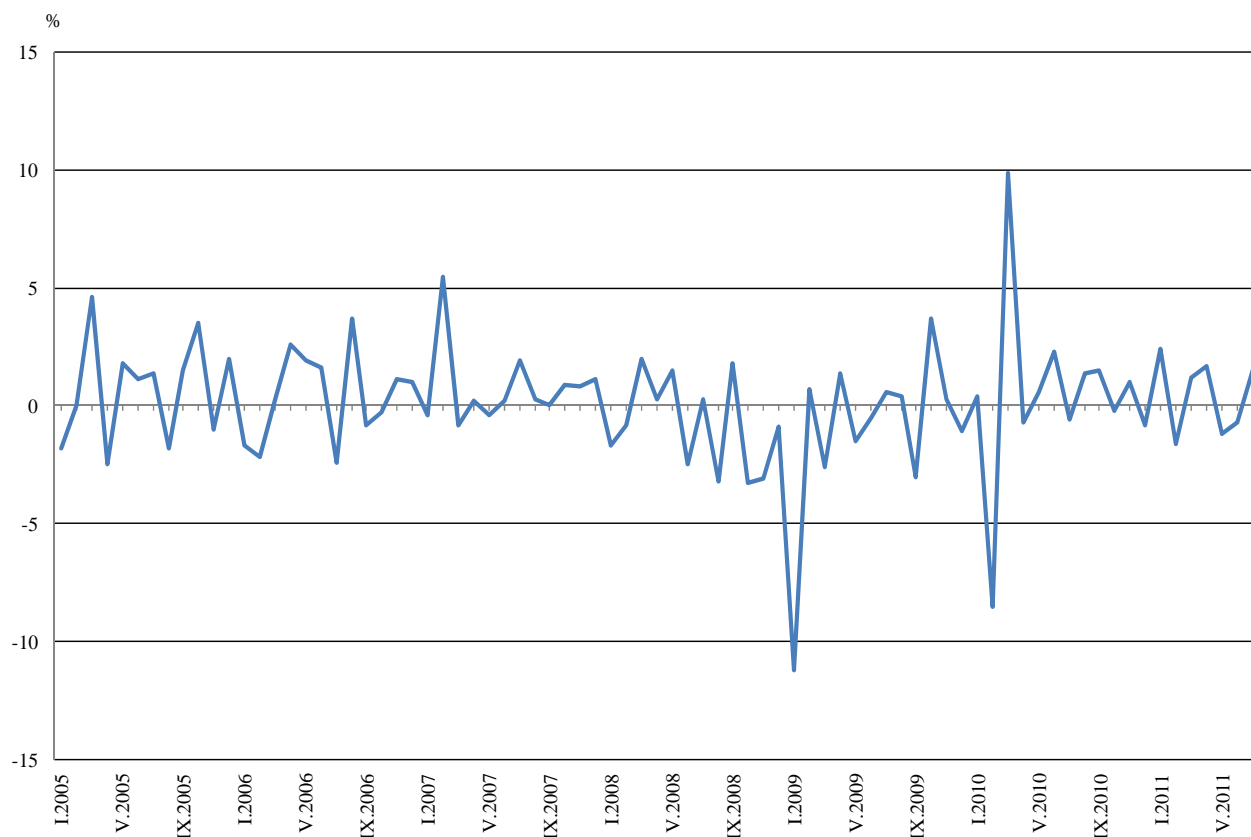


Monthly comparisons

In July 2011 as compared to June 2011, the seasonally adjusted Industrial Production Index in the mining and quarrying industry increased by 11.3%, in the electricity, gas, steam and air conditioning supply by 9.1%, while in the manufacturing a decrease by 0.6% was seen.

The most significant decreases of production in the manufacturing were seen in the manufacture of textiles by 16.6%, in the repair and installation of machinery and equipment by 12.3%, in the manufacture of tobacco products by 8.3%, in the manufacture of paper and paper products by 4.6%. There was increase in the manufacture of beverages by 5.2%, in the manufacture of basic metals by 5.0%, in the manufacture of food products and in the manufacture of fabricated metal products, except machinery and equipment by 3.6%.

Figure 2. Percentage changes of Industrial Production Indices compared to the previous month (seasonally adjusted)



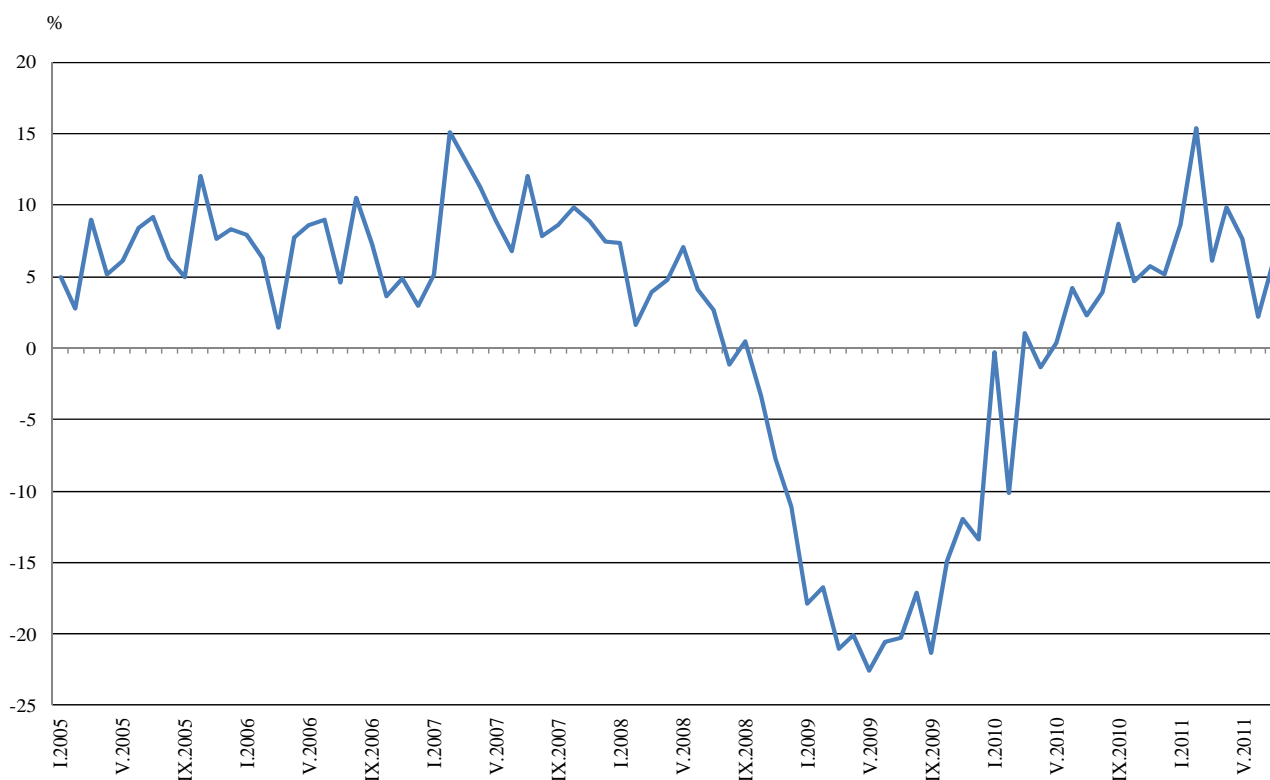


Annual comparisons

On annual bases in July 2011 Industrial Production Index, calculated from working day adjusted data in the mining and quarrying industry grew by 10.3%, in the electricity, gas, steam and air conditioning supply by 7.4% and in the manufacturing by 5.9%.

Increases were registered in the production of intermediate goods by 9.6%, in the production of investment goods by 5.6% and in the production of energy by 4.7%.

**Figure 3. Percentage changes of Industrial Production Indices compared to the same month of the previous year
(working day adjusted)**



The final data on Industrial Production and Turnover Indices for June 2011 can be found in NSI internet web-site: (<http://www.nsi.bg/otrasalen.php?otr=46>).

Percentage changes of Industrial Production Indices compared to the previous month*

Economic Activities	NACE.BG - 2008 Code	2011					
		II	III	IV	V	VI	VII
Industry	B_TO_E36	-1.6	1.2	1.7	-1.2	-0.7	1.5
Mining and quarrying	B	-13.1	12.0	1.4	10.0	-13.6	11.3
of which:							
Mining of coal and lignite	B05	3.5	7.7	15.8	5.0	-14.8	-5.0
Mining of metal ores	B07	-28.6	6.8	-7.9	-0.2	-7.2	42.1
Other mining and quarrying	B08	2.8	-14.7	12.6	5.4	-4.8	6.6
Manufacturing	C	-5.6	-0.3	1.0	1.6	0.6	-0.6
of which:							
Manufacture of food products	C10	0.4	-6.7	0.8	-3.7	1.1	3.6
Manufacture of beverages	C11	2.8	-9.5	2.8	-0.9	-1.7	5.2
Manufacture of tobacco products	C12	-2.3	-8.8	3.9	-6.0	10.3	-8.3
Manufacture of textiles	C13	0.4	-4.6	11.6	0.7	2.3	-16.6
Manufacture of wearing apparel	C14	0.8	-5.2	2.8	0.4	1.7	0.4
Manufacture of leather and related products	C15	-0.5	3.2	-1.7	1.6	1.8	2.4
Manufacture of wood and of products of wood and cork, except furniture; manufacture of articles of straw and plaiting materials	C16	-1.0	-4.9	3.6	-7.7	10.7	0.8
Manufacture of paper and paper products	C17	-7.9	6.7	1.0	8.2	-0.2	-4.6
Printing and reproduction of recorded media	C18	-0.5	-2.9	-8.3	5.4	0.9	2.2
Manufacture of chemicals and chemical products	C20	3.1	-15.9	6.6	9.5	-6.2	0.4
Manufacture of basic pharmaceutical products and pharmaceutical preparations	C21	6.7	0.7	5.3	-3.6	7.5	-3.4
Manufacture of rubber and plastic products	C22	-0.6	-4.1	-5.5	13.6	-4.3	-4.4
Manufacture of other non-metallic mineral products	C23	4.4	-3.1	-4.6	0.6	5.2	-3.9
Manufacture of basic metals	C24	-6.7	0.7	4.5	10.2	-6.2	5.0
Manufacture of fabricated metal products, except machinery and equipment	C25	-20.5	20.4	-2.0	2.3	0.4	3.6
Manufacture of computer, electronic and optical products	C26	3.2	-8.2	-6.4	11.7	5.7	5.6
Manufacture of electrical equipment	C27	1.9	-2.4	-0.9	1.3	5.9	-2.2
Manufacture of machinery and equipment n.e.c.	C28	4.6	3.5	-3.2	7.9	0.6	-2.4
Manufacture of motor vehicles, trailers and semi-trailers	C29	-4.2	-0.3	-0.1	3.6	-2.8	2.4
Manufacture of other transport equipment	C30	-16.4	2.7	1.8	26.0	-34.5	-11.4
Manufacture of furniture	C31	-1.9	-2.3	0.9	3.1	2.8	0.5
Other manufacturing	C32	-14.4	-3.6	-5.9	17.9	4.1	5.4
Repair and installation of machinery and equipment	C32	-3.1	-10.6	7.0	-15.6	-2.8	-12.3
Electricity, gas, steam and air conditioning supply	D	8.1	1.1	5.8	-6.3	-2.9	9.1
Electricity, gas, steam and air conditioning supply	D35	8.1	1.1	5.8	-6.3	-2.9	9.1

* Seasonally adjusted



Table 2

Percentage changes of Industrial Production Indices compared to the same month of the previous year *

Economic Activities	NACE.BG - 2008 Code	2011					
		II	III	IV	V	VI	VII
Industry	B_TO_E36	15.4	6.1	9.8	7.6	2.9	6.2
Mining and quarrying	B	-1.0	3.2	16.1	20.9	-4.7	10.3
of which:							
Mining of coal and lignite	B05	11.2	25.1	101.6	64.5	17.5	12.3
Mining of metal ores	B07	-20.2	-13.7	-26.2	-13.3	-25.8	5.7
Other mining and quarrying	B08	-1.8	-22.9	7.8	1.5	-5.6	7.9
Manufacturing	C	22.5	7.7	5.8	5.6	5.7	5.9
of which:							
Manufacture of food products	C10	7.0	-0.6	3.2	-11.3	-10.0	-3.5
Manufacture of beverages	C11	21.2	-7.8	0.4	-0.7	-3.8	3.1
Manufacture of tobacco products	C12	53.5	-9.5	26.2	1.7	9.2	-2.1
Manufacture of textiles	C13	22.1	3.5	7.2	10.0	16.1	-10.9
Manufacture of wearing apparel	C14	11.2	0.6	3.9	2.8	7.7	3.6
Manufacture of leather and related products	C15	-14.2	9.2	1.8	13.2	0.7	7.2
Manufacture of wood and of products of wood and cork, except furniture; manufacture of articles of straw and plaiting materials	C16	24.9	3.8	5.1	-1.6	6.2	0.9
Manufacture of paper and paper products	C17	33.5	32.4	34.2	33.8	9.6	18.7
Printing and reproduction of recorded media	C18	4.5	-4.7	-15.1	-10.1	6.0	4.8
Manufacture of chemicals and chemical products	C20	51.3	9.5	19.1	28.9	23.8	14.1
Manufacture of basic pharmaceutical products and pharmaceutical preparations	C21	7.7	15.0	15.1	4.4	16.5	13.6
Manufacture of rubber and plastic products	C22	28.5	10.5	2.6	9.8	6.3	-2.1
Manufacture of other non-metallic mineral products	C23	31.8	16.9	13.4	0.6	0.8	9.1
Manufacture of basic metals	C24	-2.5	0.5	1.7	16.7	13.3	13.1
Manufacture of fabricated metal products, except machinery and equipment	C25	-11.5	11.7	18.9	16.5	7.8	17.9
Manufacture of computer, electronic and optical products	C26	23.4	23.3	3.6	32.5	31.3	29.1
Manufacture of electrical equipment	C27	18.8	6.3	9.1	5.1	16.1	11.4
Manufacture of machinery and equipment n.e.c.	C28	22.6	22.8	13.3	23.0	19.5	17.5
Manufacture of motor vehicles, trailers and semi-trailers	C29	-10.6	-12.2	-14.7	-1.2	-11.5	8.2
Manufacture of other transport equipment	C30	11.4	2.8	9.6	25.5	-11.4	-16.3
Manufacture of furniture	C31	19.0	10.2	12.4	15.7	16.3	17.4
Other manufacturing	C32	8.9	-5.0	-8.4	13.2	26.7	45.4
Repair and installation of machinery and equipment	C33	3.9	-15.8	-6.4	-4.2	-22.6	-32.3
Electricity, gas, steam and air conditioning supply	D	5.9	7.6	18.3	12.6	-3.1	7.4
Electricity, gas, steam and air conditioning supply	D35	5.9	7.6	18.3	12.6	-3.1	7.4

* Working day adjusted.



Table 3

Industrial Production Indices
(seasonally adjusted, 2005=100)

NACE.BG - 2008 Code	2010						2011						
	VII	VIII	IX	X	XI	XII	I	II	III	V	V	VI	VII
B_TO_E36	97.7	99.1	100.6	100.4	101.4	100.6	103.0	101.4	102.6	104.3	103.0	102.3	103.8
B	74.9	72.8	80.0	83.0	87.7	79.3	79.3	68.9	77.2	78.3	86.1	74.4	82.8
B05	96.4	102.3	102.2	107.5	105.7	99.5	103.5	107.1	115.4	133.6	140.3	119.6	113.6
B07	77.0	74.8	77.8	64.0	78.4	70.1	86.8	62.0	66.2	61.0	60.9	56.5	80.3
B08	64.3	62.2	69.4	65.2	66.4	65.0	64.3	66.1	56.4	63.5	66.9	63.7	67.9
C	97.4	98.9	101.3	101.4	103.8	91.3	106.9	100.9	100.6	101.6	103.2	103.8	103.2
C10	117.3	117.7	122.5	115.6	121.3	114.6	118.6	119.1	111.1	112.0	107.9	109.1	113.0
C11	88.5	90.3	91.1	81.6	89.8	82.9	91.7	94.3	85.3	87.7	86.9	85.4	89.8
C12	102.8	95.4	89.1	91.3	95.4	101.2	114.7	112.1	102.2	106.2	99.8	110.1	101.0
C13	69.8	66.3	69.6	67.9	66.1	63.3	69.5	69.8	66.6	74.3	74.8	76.5	63.8
C14	70.1	68.1	71.7	71.5	70.8	69.0	70.8	71.4	67.7	69.6	69.9	71.1	71.4
C15	77.2	78.6	79.2	78.1	77.7	77.7	76.3	75.9	78.3	77.0	78.2	79.6	81.5
C16	88.0	86.6	88.3	93.0	84.5	83.3	88.3	87.4	83.1	86.1	79.5	88.0	88.7
C17	128.6	146.5	140.1	108.2	134.6	131.4	150.0	138.2	147.4	148.9	161.1	160.7	153.3
C18	103.8	105.0	120.1	112.9	111.7	106.7	112.9	112.3	109.0	99.9	105.3	106.3	108.6
C20	96.2	102.7	104.5	103.5	118.3	94.7	117.2	120.8	101.6	108.3	118.6	111.2	111.6
C21	86.1	85.4	92.4	91.8	84.2	85.5	84.0	89.6	90.2	95.0	91.6	98.5	95.2
C22	115.4	112.1	120.9	112.1	119.0	114.2	120.6	119.9	115.0	108.7	123.5	118.2	113.0
C23	79.7	80.4	82.6	78.9	85.6	75.5	88.7	92.6	89.7	85.6	86.1	90.6	87.1
C24	99.0	96.4	99.6	101.1	92.6	92.9	105.2	98.1	98.8	103.2	113.7	106.6	111.9
C25	96.1	97.4	102.1	106.6	110.3	88.0	113.2	90.0	108.4	106.2	108.6	109.0	112.9
C26	109.1	110.7	103.8	115.1	114.8	118.1	126.8	130.8	120.1	112.4	125.6	132.8	140.2
C27	142.2	140.1	148.5	146.1	140.9	141.6	153.5	156.4	152.7	151.3	153.2	162.3	158.8
C28	107.4	113.4	112.9	115.7	113.1	108.3	113.7	118.9	123.1	119.2	128.6	129.4	126.3
C29	152.8	154.5	161.6	161.6	162.9	164.7	157.8	151.1	150.6	150.5	155.9	151.6	155.2
C30	76.9	112.1	69.9	55.3	60.2	70.6	110.7	92.5	95.0	96.7	121.8	79.8	70.7
C31	95.5	99.0	111.9	105.7	109.4	98.5	108.6	106.5	104.0	104.9	108.1	111.1	111.7
C32	116.7	124.1	134.9	139.7	165.5	146.3	167.8	143.6	138.4	130.2	153.5	159.8	168.4
C33	111.7	130.7	99.4	119.7	104.1	124.7	117.5	113.8	101.7	108.8	91.8	89.2	78.2
D	115.6	114.7	109.2	115.4	103.9	107.4	106.5	115.1	116.4	123.1	115.4	112.1	122.3
D35	115.6	114.7	109.2	115.4	103.9	107.4	106.5	115.1	116.4	123.1	115.4	112.1	122.3



Table 4

Industrial Production Indices
(working day adjusted, 2005=100)

NACE.BG - 2008 Code	2008	2009	2010						2011						
	VII	VII	VII	VIII	IX	X	XI	XII	I	II	III	IV	V	VI	VII
B_TO_E36	124.4	99.2	101.5	98.3	103.5	105.0	107.4	107.1	94.9	95.0	105.3	101.9	103.4	105.3	107.8
B	85.7	74.8	75.4	73.3	80.5	83.6	88.2	79.8	79.8	69.3	77.7	78.8	86.6	74.8	83.2
B05	103.4	84.3	96.0	94.3	106.7	129.3	125.4	110.2	117.1	112.1	112.7	113.9	131.9	108.3	107.8
B07	67.1	76.8	76.0	73.1	77.9	69.0	80.9	73.5	75.9	53.4	68.0	67.2	70.5	61.1	80.3
B08	125.6	80.8	65.8	64.6	77.0	72.8	74.3	71.9	41.6	53.3	53.6	62.2	74.2	68.5	71.0
C	133.5	98.9	103.6	99.3	107.2	105.9	108.6	103.3	88.4	89.2	104.0	99.9	107.6	111.5	109.7
C10	126.2	116.2	118.3	121.7	136.3	126.5	130.7	126.9	100.2	102.4	110.6	108.5	112.5	112.0	114.2
C11	154.1	118.4	107.6	114.8	98.3	73.8	88.3	102.3	57.8	62.4	78.8	86.0	98.0	101.7	110.9
C12	151.3	113.7	119.6	115.6	112.4	117.4	113.0	104.6	80.3	73.7	87.2	91.4	108.4	126.7	117.1
C13	113.1	74.0	78.8	50.9	70.0	70.3	71.7	58.8	57.0	69.0	76.1	81.7	89.3	90.8	70.2
C14	106.5	85.4	79.9	66.3	72.6	73.8	74.1	75.8	70.2	71.7	69.0	63.9	68.9	74.0	82.8
C15	125.4	104.1	91.4	76.9	89.0	84.8	76.0	71.7	75.7	74.1	84.1	69.7	70.5	81.3	98.0
C16	126.0	80.7	93.2	88.3	96.5	100.6	93.3	82.4	72.0	76.3	82.9	84.7	81.0	93.9	94.0
C17	116.5	70.7	132.0	147.3	145.0	111.5	137.6	133.4	144.4	130.3	149.2	149.6	164.8	166.4	156.7
C18	111.9	118.0	103.8	110.7	134.3	123.0	121.8	128.0	93.7	97.7	104.4	96.6	108.1	111.6	108.8
C20	139.1	77.7	98.1	96.4	107.2	99.9	125.0	93.6	106.7	114.1	107.1	109.9	118.8	115.5	111.9
C21	93.3	64.9	73.4	84.2	97.6	101.0	91.7	91.2	72.6	90.9	99.5	96.0	98.2	114.8	83.4
C22	146.9	114.6	127.1	114.0	129.7	125.7	129.3	114.3	97.4	102.9	118.7	108.1	124.8	128.3	124.4
C23	164.7	94.4	88.9	86.5	94.2	90.5	94.2	72.9	58.5	70.0	85.6	87.8	95.3	100.2	97.0
C24	130.1	102.4	105.4	93.5	95.2	107.5	94.4	77.8	94.5	96.5	108.5	103.9	115.9	106.3	119.2
C25	138.7	87.4	99.3	98.4	106.9	103.7	116.9	112.4	81.5	79.6	112.1	107.5	110.2	117.9	117.1
C26	108.8	98.9	105.5	98.9	113.8	115.1	119.3	156.6	106.9	109.5	124.0	108.5	129.1	136.6	136.2
C27	177.3	133.4	148.6	125.7	173.6	170.7	160.3	146.8	142.8	145.8	155.3	146.5	154.4	169.7	165.6
C28	146.3	108.6	114.5	106.1	120.2	124.1	122.2	116.9	97.1	109.6	131.2	117.5	132.3	142.7	134.5
C29	134.4	120.0	135.3	123.6	160.6	169.9	162.1	158.2	156.5	130.4	150.0	139.5	160.2	154.6	146.4
C30	180.1	128.6	86.0	147.3	78.3	49.7	54.1	93.8	56.2	65.6	91.9	76.8	179.9	80.0	72.0
C31	153.2	99.1	98.0	97.8	119.0	114.1	120.9	112.8	91.9	95.1	108.8	103.9	114.9	117.8	115.1
C32	152.4	165.9	115.0	122.7	150.7	164.2	183.3	143.0	133.9	124.2	137.8	126.7	164.8	179.0	167.2
C33	154.7	98.6	119.6	131.6	103.3	124.7	111.0	170.5	80.6	93.7	101.7	100.1	86.5	94.3	81.0
D	107.8	107.9	104.4	103.8	99.1	111.4	112.8	134.6	125.6	128.5	129.2	115.6	97.5	96.9	112.1
D35	107.8	107.9	104.4	103.8	99.1	111.4	112.8	134.6	125.6	128.5	129.2	115.6	97.5	96.9	112.1