

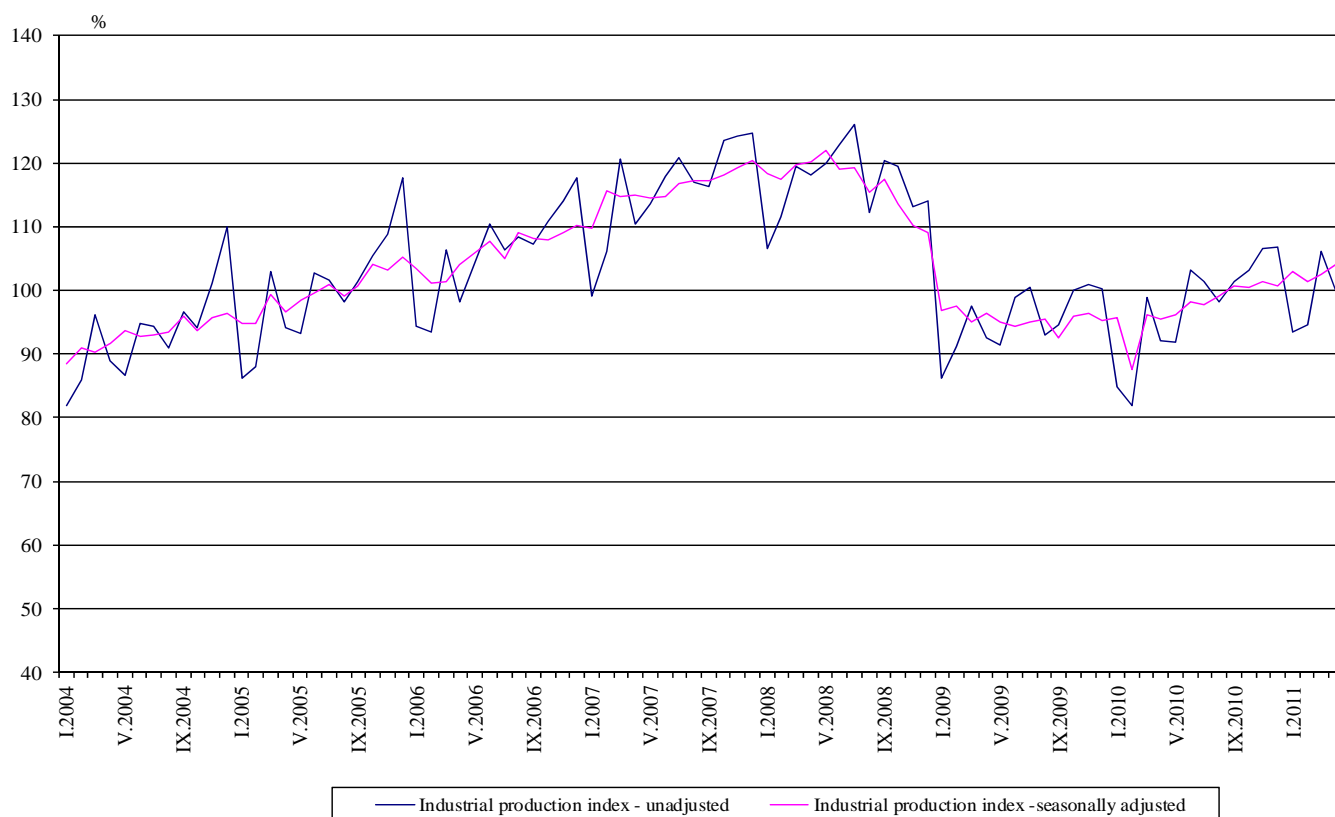


Industrial Production Indices in April 2011¹

The preliminary data showed that the Industrial Production Index², seasonally adjusted³, increased by 1.5% in April 2011 as compared to March 2011.

In April 2011 working day adjusted⁴ Industrial Production Index rose by 9.4% as compared to the same month of 2010.

Figure 1. Industrial Production Indices
(2005 = 100)



¹April 2011 data are preliminary.

² Monthly Industrial Production and Industrial turnover indices measure changes in **production and turnover values** of industrial enterprises. This information can be used to access the current economic development and for short-term forecasts. Indices do not measure the actual production level, it aims to measure the average change in value of production between two points of time

Indices are compiled on the base of information collected through representative sampling survey on industrial enterprises. The sample covers enterprises with annual turnover more than 97% of total turnover in industry.

Industrial production indices are calculated at constant base year (2005) that is to say they are weighted with the structure of the value added at factor costs in the base year.

³ **Seasonal adjustment** is a statistical method, which eliminates the seasonal component of time series and it is particularly suitable for long-term comparisons and analysis of the data.

⁴ **Working day adjustment** is an adjustment for variations caused by calendar effects, different number of calendar and working days in the months, national holidays and outliers (for example the presence of more non-working days in May could contribute to the decline in the production in some activities).

The seasonally and working day adjusted data on Industrial production index for the period 2000-2010 can be found in NSI internet web-site: (<http://www.nsi.bg/otrasalen.php?otr=46>).

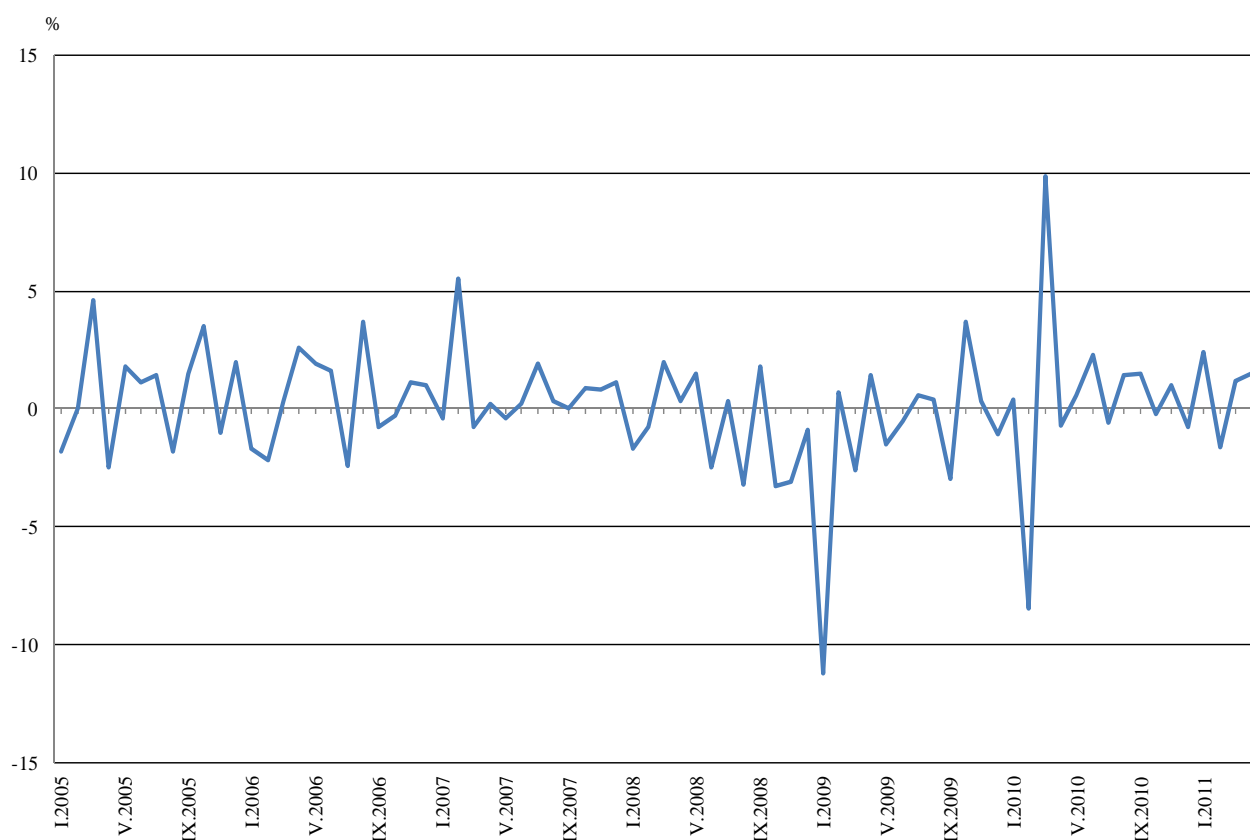


Monthly comparisons

In April 2011 as compared to March 2011, the seasonally adjusted Industrial Production Index in the mining and quarrying industry increased by 1.3%, in the manufacturing by 0.2% and in the electricity, gas, steam and air conditioning supply by 6.2%.

The most significant increases of production in the manufacturing were seen in the manufacture of textiles by 8.1%, in the repair and installation of machinery and equipment by 5.9%, in the manufacture of chemicals and chemical products by 5.5%, in the manufacture of basic pharmaceutical products and pharmaceutical preparations by 5.0%. There was decrease in the printing and reproduction of recorded media by 10.6%, in the manufacture of other non-metallic mineral products by 4.7%.

Figure 2. Percentage changes of Industrial Production Indices compared to the previous month
(Seasonally adjusted)



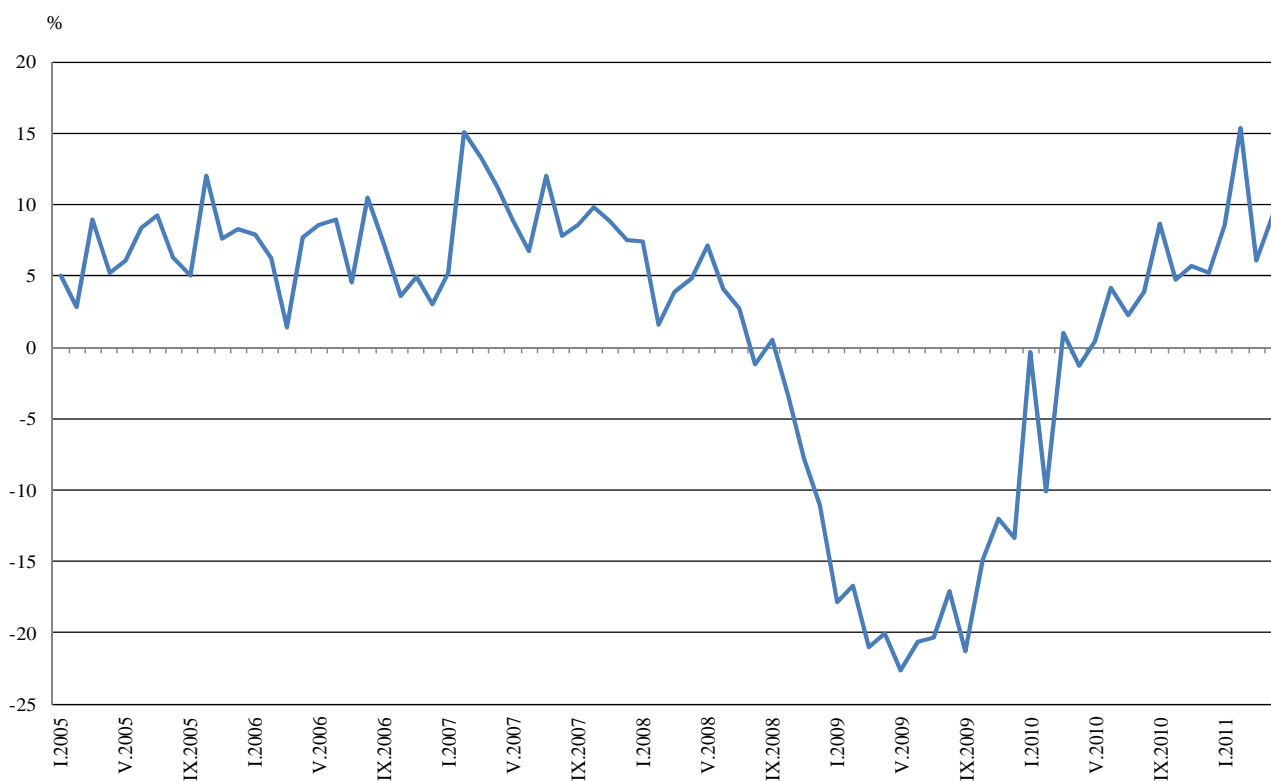


Annual comparisons

On annual bases in April 2011 Industrial Production Index, calculated from working day adjusted data in the mining and quarrying industry grew by 15.9%, in the manufacturing by 5.1% and in the electricity, gas, steam and air conditioning supply by 18.6%.

Increases were registered in the production of energy by 15.3%, in the production of intermediate goods by 5.9% and in the production of investment goods by 4.6%.

Figure 3. Percentage changes of Industrial Production Indices compared to the same month of the previous year
(Working day adjusted)



The final data on Industrial Production and Turnover Indices for March 2011 can be found in NSI internet web-site: (<http://www.nsi.bg/otrasalen.php?otr=46>).



Table 1

Percentage changes of Industrial Production Indices compared to the previous month¹

Economic activities	NACE.BG 2008 Code	2010		2011			
		XI	XII	I	II	III	IV
Industry	B_TO_E36	1.0	-0.8	2.4	-1.6	1.2	1.5
Mining and quarrying	B	5.7	-9.6	0.0	-13.1	12.0	1.3
of which:							
Mining of coal and lignite	B05	-1.7	-5.9	4.0	5.2	6.0	14.4
Mining of metal ores	B07	22.5	-10.6	23.8	-29.0	7.5	-7.7
Other mining and quarrying	B08	1.8	-2.1	-1.1	3.4	-15.2	10.5
Manufacturing	C	2.4	-12.0	17.1	-5.6	-0.3	0.2
of which:							
Manufacture of food products	C10	4.9	-5.5	3.5	0.4	-6.7	-1.0
Manufacture of beverages	C11	10.0	-7.7	10.6	2.8	-9.5	2.5
Manufacture of tobacco products	C12	4.5	6.1	13.3	-1.9	-9.2	4.0
Manufacture of textiles	C13	-2.7	-4.2	9.8	1.0	-5.1	8.1
Manufacture of wearing apparel	C14	-1.0	-2.5	2.6	1.0	-5.3	1.3
Manufacture of leather and related products	C15	-0.5	0.0	-1.8	-0.8	3.4	-1.9
Manufacture of wood and of products of wood and cork, except furniture; manufacture of articles of straw and plaiting materials	C16	-9.1	-1.4	6.0	-0.8	-5.1	4.3
Manufacture of paper and paper products	C17	24.4	-2.4	14.2	-7.7	6.5	0.2
Printing and reproduction of recorded media	C18	-1.1	-4.5	5.8	-0.9	-2.6	-10.6
Manufacture of chemicals and chemical products	C20	14.3	-19.9	23.8	3.0	-15.8	5.5
Manufacture of basic pharmaceutical products and pharmaceutical preparations	C21	-8.3	1.5	-1.8	7.4	0.0	5.0
Manufacture of rubber and plastic products	C22	6.2	-4.0	5.6	-0.7	-4.0	-6.2
Manufacture of other non-metallic mineral products	C23	8.5	-11.8	17.5	4.2	-2.9	-4.7
Manufacture of basic metals	C24	-8.4	0.3	13.2	-6.6	0.5	3.2
Manufacture of fabricated metal products, except machinery and equipment	C25	3.5	-20.2	28.6	-20.3	20.2	-2.5
Manufacture of computer, electronic and optical products	C26	-0.3	2.9	7.4	2.7	-7.8	-5.3
Manufacture of electrical equipment	C27	-3.6	0.5	8.4	1.6	-2.1	-0.6
Manufacture of machinery and equipment n.e.c.	C28	-2.2	-4.2	5.0	4.2	3.9	-4.3
Manufacture of motor vehicles, trailers and semi-trailers	C29	0.8	1.1	-4.2	-8.5	4.3	-5.2
Manufacture of other transport equipment	C30	8.9	17.3	56.8	-15.1	1.1	-0.9
Manufacture of furniture	C31	3.5	-10.0	10.3	-2.0	-2.3	-0.5
Other manufacturing	C32	18.5	-11.6	14.7	-14.9	-3.1	-7.9
Repair and installation of machinery and equipment	C32	-13.0	19.8	-5.8	-3.1	-10.6	5.9
Electricity, gas, steam and air conditioning supply	D	-10.0	3.4	-0.8	8.6	0.6	6.2
Electricity, gas, steam and air conditioning supply	D35	-10.0	3.4	-0.8	8.6	0.6	6.2

¹ Seasonally adjusted.



Table 2

Percentage changes of Industrial Production Indices compared to the same month of the previous year ¹

Economic activities	NACE.BG 2008 Code	2010		2011			
		XI	XII	I	II	III	IV
Industry	B_TO_E36	5.7	5.2	8.6	15.4	6.1	9.4
Mining and quarrying	B	-1.3	1.3	15.5	-1.0	3.2	15.9
of which:							
Mining of coal and lignite	B05	6.2	11.4	12.3	11.3	25.1	101.6
Mining of metal ores	B07	-6.6	-6.1	16.6	-20.3	-13.7	-26.2
Other mining and quarrying	B08	-8.4	-9.7	-12.4	-1.8	-22.9	6.4
Manufacturing	C	11.5	7.6	13.3	22.5	7.7	5.1
of which:							
Manufacture of food products	C10	13.0	0.6	5.3	7.0	-0.6	1.0
Manufacture of beverages	C11	-0.9	-1.2	6.8	21.2	-7.8	-0.1
Manufacture of tobacco products	C12	-16.7	6.0	32.3	53.5	-9.5	25.6
Manufacture of textiles	C13	3.0	-1.8	16.3	22.1	3.5	4.5
Manufacture of wearing apparel	C14	5.3	1.3	4.6	11.2	0.6	2.1
Manufacture of leather and related products	C15	2.3	6.4	-5.6	-14.2	9.2	1.9
Manufacture of wood and of products of wood and cork, except furniture; manufacture of articles of straw and plaiting materials	C16	9.6	12.6	32.4	25.0	3.8	5.5
Manufacture of paper and paper products	C17	74.2	53.0	57.8	33.6	32.4	33.4
Printing and reproduction of recorded media	C18	-5.3	-2.1	-7.1	4.4	-4.7	-17.3
Manufacture of chemicals and chemical products	C20	48.1	4.0	42.5	51.3	9.5	18.2
Manufacture of basic pharmaceutical products and pharmaceutical preparations	C21	2.3	-2.4	-9.4	7.8	15.0	14.9
Manufacture of rubber and plastic products	C22	11.1	8.0	15.5	28.5	10.5	2.0
Manufacture of other non-metallic mineral products	C23	11.5	4.3	29.4	31.8	16.9	13.2
Manufacture of basic metals	C24	-14.4	-0.5	13.3	-2.5	0.5	1.5
Manufacture of fabricated metal products, except machinery and equipment	C25	35.9	21.6	42.0	-11.5	11.7	18.5
Manufacture of computer, electronic and optical products	C26	7.8	10.4	23.4	23.4	23.3	5.1
Manufacture of electrical equipment	C27	1.6	1.9	1.5	18.8	6.3	8.9
Manufacture of machinery and equipment n.e.c.	C28	20.3	13.9	19.9	22.6	22.8	13.4
Manufacture of motor vehicles, trailers and semi-trailers	C29	26.8	30.3	15.3	-10.6	-12.2	-18.8
Manufacture of other transport equipment	C30	-41.6	-11.7	26.0	11.5	2.8	9.4
Manufacture of furniture	C31	28.6	13.6	21.4	19.0	10.2	10.9
Other manufacturing	C32	24.9	36.6	30.1	8.9	-5.0	-10.1
Repair and installation of machinery and equipment	C33	7.9	45.2	13.7	3.9	-15.8	-8.2
Electricity, gas, steam and air conditioning supply	D	-7.2	0.9	-2.4	5.9	7.6	18.6
Electricity, gas, steam and air conditioning supply	D35	-7.2	0.9	-2.4	5.9	7.6	18.6

¹ Working day adjusted.



Table 3

Industrial Production Indices
(Seasonally adjusted, 2005 = 100)

NACE.BG 2008 Code	2010									2011			
	IV	V	VI	VII	VIII	IX	X	XI	XII	I	II	III	IV
B_TO_E36	95.5	96.1	98.3	97.7	99.1	100.6	100.4	101.4	100.6	103.0	101.4	102.6	104.1
B	67.4	71.1	78.0	74.9	72.8	80.0	83.0	87.7	79.3	79.3	68.9	77.2	78.2
B05	81.3	98.0	102.6	96.4	102.3	102.2	107.5	105.7	99.5	103.5	108.9	115.4	132.0
B07	84.0	71.2	76.5	77.0	74.8	77.8	64.0	78.4	70.1	86.8	61.6	66.2	61.1
B08	58.7	67.5	67.4	64.3	62.2	69.4	65.2	66.4	65.0	64.3	66.5	56.4	62.3
C	95.7	97.6	98.3	97.4	98.9	101.3	101.4	103.8	91.3	106.9	100.9	100.6	100.8
C10	108.5	121.6	120.9	117.3	117.7	122.5	115.6	121.3	114.6	118.6	119.1	111.1	110.0
C11	87.7	88.0	87.2	88.5	90.3	91.1	81.6	89.8	82.9	91.7	94.3	85.3	87.4
C12	89.3	95.5	104.1	102.8	95.4	89.1	91.3	95.4	101.2	114.7	112.5	102.2	106.3
C13	70.3	68.8	69.0	69.8	66.3	69.6	67.9	66.1	63.3	69.5	70.2	66.6	72.0
C14	67.3	68.3	66.4	70.1	68.1	71.7	71.5	70.8	69.0	70.8	71.5	67.7	68.6
C15	76.2	74.0	77.4	77.2	78.6	79.2	78.1	77.7	77.7	76.3	75.7	78.3	76.8
C16	81.9	79.3	82.5	88.0	86.6	88.3	93.0	84.5	83.3	88.3	87.6	83.1	86.7
C17	110.8	121.0	146.9	128.6	146.5	140.1	108.2	134.6	131.4	150.0	138.4	147.4	147.7
C18	117.0	116.9	100.2	103.8	105.0	120.1	112.9	111.7	106.7	112.9	111.9	109.0	97.4
C20	88.6	93.9	88.4	96.2	102.7	104.5	103.5	118.3	94.7	117.2	120.7	101.6	107.2
C21	86.4	88.5	89.0	86.1	85.4	92.4	91.8	84.2	85.5	84.0	90.2	90.2	94.7
C22	105.5	113.2	111.5	115.4	112.1	120.9	112.1	119.0	114.2	120.6	119.8	115.0	107.9
C23	75.5	85.3	90.2	79.7	80.4	82.6	78.9	85.6	75.5	88.7	92.4	89.7	85.5
C24	100.9	100.1	93.6	99.0	96.4	99.6	101.1	92.6	92.9	105.2	98.3	98.8	102.0
C25	89.4	93.6	101.3	96.1	97.4	102.1	106.6	110.3	88.0	113.2	90.2	108.4	105.7
C26	107.4	94.6	101.3	109.1	110.7	103.8	115.1	114.8	118.1	126.8	130.2	120.1	113.7
C27	138.4	143.3	143.6	142.2	140.1	148.5	146.1	140.9	141.6	153.5	155.9	152.7	151.8
C28	103.7	106.1	110.0	107.4	113.4	112.9	115.7	113.1	108.3	113.7	118.5	123.1	117.8
C29	154.4	153.2	160.1	152.8	154.5	161.6	161.6	162.9	164.7	157.8	144.4	150.6	142.8
C30	89.5	114.5	86.9	76.9	112.1	69.9	55.3	60.2	70.6	110.7	94.0	95.0	94.1
C31	92.9	93.4	96.0	95.5	99.0	111.9	105.7	109.4	98.5	108.6	106.4	104.0	103.5
C32	139.0	135.5	126.3	116.7	124.1	134.9	139.7	165.5	146.3	167.8	142.8	138.4	127.5
C33	116.5	93.8	114.0	111.7	130.7	99.4	119.7	104.1	124.7	117.5	113.8	101.7	107.7
D	107.1	104.9	114.1	115.6	114.7	109.2	115.4	103.9	107.4	106.5	115.7	116.4	123.6
D35	107.1	104.9	114.1	115.6	114.7	109.2	115.4	103.9	107.4	106.5	115.7	116.4	123.6



Table 4

Industrial Production Indices
(Working day adjusted, 2005 = 100)

NACE.BG 2008 Code	2008	2009	2010									2011			
	IV	IV	IV	V	VI	VII	VIII	IX	X	XI	XII	I	II	III	IV
B_TO_E36	117.7	94.0	92.8	96.1	102.3	101.5	98.3	103.5	105.0	107.4	107.1	94.9	95.0	105.3	101.5
B	90.2	71.3	67.9	71.6	78.5	75.4	73.3	80.5	83.6	88.2	79.8	79.8	69.3	77.7	78.7
B05	91.0	78.1	56.5	80.2	92.2	96.0	94.3	106.7	129.3	125.4	110.2	117.1	112.2	112.7	113.9
B07	86.5	72.9	91.0	81.3	82.4	76.0	73.1	77.9	69.0	80.9	73.5	75.9	53.3	68.0	67.2
B08	127.0	87.9	57.7	73.1	72.6	65.8	64.6	77.0	72.8	74.3	71.9	41.6	53.3	53.6	61.4
C	124.2	94.1	94.4	101.9	105.5	103.6	99.3	107.2	105.9	108.6	103.3	88.4	89.2	104.0	99.2
C10	118.0	111.0	105.1	126.9	124.5	118.3	121.7	136.3	126.5	130.7	126.9	100.2	102.4	110.6	106.2
C11	130.3	102.0	85.7	98.7	105.7	107.6	114.8	98.3	73.8	88.3	102.3	57.8	62.4	78.8	85.6
C12	66.2	87.8	72.4	106.6	116.0	119.6	115.6	112.4	117.4	113.0	104.6	80.3	73.7	87.2	90.9
C13	124.2	82.5	76.2	81.2	78.2	78.8	50.9	70.0	70.3	71.7	58.8	57.0	69.0	76.1	79.6
C14	97.9	72.6	61.5	67.0	68.7	79.9	66.3	72.6	73.8	74.1	75.8	70.2	71.7	69.0	62.8
C15	98.1	69.1	68.5	62.3	80.7	91.4	76.9	89.0	84.8	76.0	71.7	75.7	74.1	84.1	69.8
C16	114.4	63.4	80.6	82.3	88.4	93.2	88.3	96.5	100.6	93.3	82.4	72.0	76.4	82.9	85.0
C17	122.2	79.9	111.5	123.2	151.8	132.0	147.3	145.0	111.5	137.6	133.4	144.4	130.4	149.2	148.7
C18	120.4	104.5	113.8	120.2	105.3	103.8	110.7	134.3	123.0	121.8	128.0	93.7	97.6	104.4	94.1
C20	117.2	78.6	92.3	92.2	93.3	98.1	96.4	107.2	99.9	125.0	93.6	106.7	114.1	107.1	109.1
C21	94.4	76.7	83.4	94.1	98.5	73.4	84.2	97.6	101.0	91.7	91.2	72.6	91.0	99.5	95.8
C22	133.0	108.6	105.4	113.7	120.7	127.1	114.0	129.7	125.7	129.3	114.3	97.4	102.9	118.7	107.5
C23	160.9	101.1	77.4	94.7	99.4	88.9	86.5	94.2	90.5	94.2	72.9	58.5	70.0	85.6	87.6
C24	136.3	88.1	102.2	99.3	93.8	105.4	93.5	95.2	107.5	94.4	77.8	94.5	96.5	108.5	103.7
C25	151.8	92.7	90.4	94.6	109.4	99.3	98.4	106.9	103.7	116.9	112.4	81.5	79.6	112.1	107.1
C26	94.1	93.8	104.7	97.4	104.0	105.5	98.9	113.8	115.1	119.3	156.6	106.9	109.5	124.0	110.0
C27	154.5	132.2	134.3	146.9	146.2	148.6	125.7	173.6	170.7	160.3	146.8	142.8	145.8	155.3	146.2
C28	150.1	103.6	103.7	107.6	119.4	114.5	106.1	120.2	124.1	122.2	116.9	97.1	109.6	131.2	117.6
C29	144.1	93.3	163.5	162.1	174.7	135.3	123.6	160.6	169.9	162.1	158.2	156.5	130.5	150.0	132.7
C30	121.3	79.7	70.1	143.3	90.3	86.0	147.3	78.3	49.7	54.1	93.8	56.2	65.7	91.9	76.7
C31	143.1	95.3	92.4	99.3	101.3	98.0	97.8	119.0	114.1	120.9	112.8	91.9	95.1	108.8	102.5
C32	147.5	138.5	138.3	145.6	141.3	115.0	122.7	150.7	164.2	183.3	143.0	133.9	124.1	137.8	124.3
C33	118.7	86.0	106.9	90.3	121.9	119.6	131.6	103.3	124.7	111.0	170.5	80.6	93.7	101.7	98.1
D	115.1	98.3	97.7	86.6	100.0	104.4	103.8	99.1	111.4	112.8	134.6	125.6	128.5	129.2	115.9
D35	115.1	98.3	97.7	86.6	100.0	104.4	103.8	99.1	111.4	112.8	134.6	125.6	128.5	129.2	115.9