

Industrial Production Indices and Industrial Turnover Indices in April 2010¹

1. Industrial Production Indices²

The preliminary data showed that the Industrial Production Index increased by 0.2% in April 2010 as compared to April 2009. Increases were registered in the electricity, gas, steam and air conditioning supply by 1.9% and in the manufacturing by 0.4%, while in the mining and quarrying industry a decrease by 5.0% was seen. The production of intermediate goods rose by 5.0%, the production of investment goods - by 4.9%, the production of energy - by 0.9%.

In April 2010, the Industrial Production Index decreased by 6.4% as compared to the previous month. Decreases were registered in the electricity, gas, steam and air conditioning supply by 16.6%, in the mining and quarrying industry by 10.3% and in the manufacturing by 2.8%. The most significant decreases of production were seen in the manufacture of tobacco products by 26.4%, in the manufacture of fabricated metal products, except machinery and equipment by 11.4%, in the manufacture of wearing apparel by 10.5%, in the manufacture of chemicals and chemical products by 8.4%. There were increases in the manufacture of other non-metallic mineral products by 7.0%, in the printing and reproduction of recorded media by 2.8%.

2. Industrial Turnover Indices³

According to the preliminary data in April 2010 the Industrial Turnover Index increased by 9.7% compared to April 2009. The increase in the mining and quarrying industry was by 35.4%, in the manufacturing by 10.3% and in the electricity, gas, steam and air conditioning supply by 4.0%.

In April 2010, the turnover decreased by 1.9% as compared to the previous month. The decrease in the in the electricity, gas, steam and air conditioning supply was by 14.9%. The mining and quarrying industry increased by 18.3% and the manufacturing - by 1.4%.

The final data on Industrial Production and Turnover Indices can be found in NSI internet web-site: (<http://www.nsi.bg/otrasalen.php?otr=46>).

¹ April 2010 data are preliminary.

² Monthly Industrial Production and Industrial turnover indices measure changes in **production and turnover values** of industrial enterprises. This information can be used to assess the current economic development and for short-term forecasts. Indices do not measure the actual production level, it aims to measure the average change in value of production between two points of time

Indices are compiled on the base of information collected through representative sampling survey on industrial enterprises. The sample covers enterprises with annual turnover more than 97% of total turnover in industry.

Industrial production indices are calculated at constant base year (2005) that is to say they are weighted with the structure of the value added at factor costs in the base year

³ The turnover comprises the totals invoiced by the observation units plus taxes on products (excise duty). Turnover indices are calculated at 2005 as a base year through direct comparison of the values of the turnover at current prices, turnover values are not corrected with the price changes. **The Turnover indices reflect the development of the value of sales as well as changes in prices.**

Industrial Production Indices and Industrial Turnover Indices (2005 = 100)

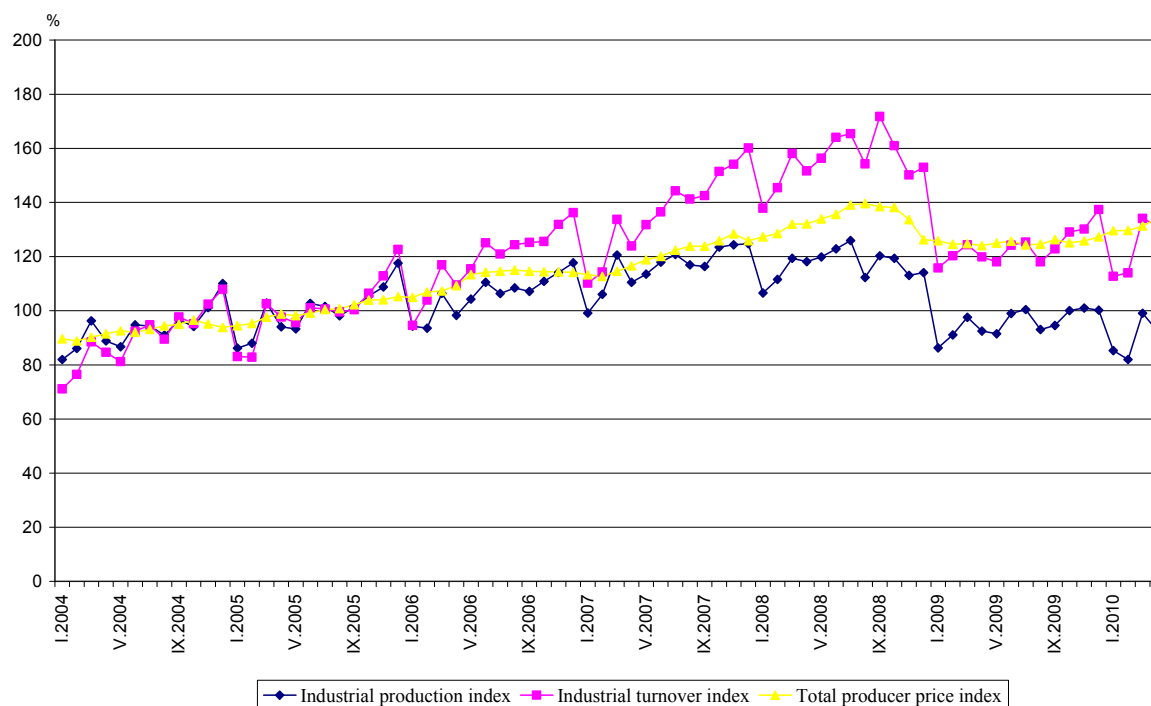


Table 1

Industrial Production Indices in April 2010⁴
(Preliminary data)

Economic activities	2005=100	Previous month=100	The same month of 2009=100
Industry	92.7	93.6	100.2
Mining and quarrying	67.4	89.7	95.0
of which:			
Mining of coal and lignite	55.6	61.8	71.7
Mining of metal ores	90.3	114.9	125.1
Other mining and quarrying	57.0	82.2	65.3
Manufacturing	93.7	97.2	100.4
of which:			
Manufacture of food products	105.3	94.4	95.7
Manufacture of beverages	85.9	100.6	85.1
Manufacture of tobacco products	70.6	73.6	81.5
Manufacture of textiles	74.5	101.7	91.5
Manufacture of wearing apparel	61.1	89.5	85.1
Manufacture of leather and related products	67.5	87.9	98.3
Manufacture of wood and of products of wood and cork, except furniture; manufacture of articles of straw and plaiting materials	78.5	98.5	125.0
Manufacture of paper and paper products	111.5	99.1	140.6
Printing and reproduction of recorded media	112.2	102.8	108.8
Manufacture of chemicals and chemical products	89.3	91.6	114.2
Manufacture of basic pharmaceutical products and pharmaceutical preparations	82.8	96.3	109.7
Manufacture of rubber and plastic products	105.8	96.5	98.3
Manufacture of other non-metallic mineral products	78.1	107.0	77.8
Manufacture of basic metals	103.4	95.9	116.8
Manufacture of fabricated metal products, except machinery and equipment	88.9	88.6	96.5
Manufacture of computer, electronic and optical products	103.8	103.5	112.1
Manufacture of electrical equipment	131.1	89.7	104.4
Manufacture of machinery and equipment n.e.c.	103.4	97.2	100.9
Manufacture of motor vehicles, trailers and semi-trailers	162.8	95.4	175.0
Manufacture of other transport equipment	69.2	77.7	87.9
Manufacture of furniture	87.5	89.2	93.2
Other manufacturing	136.0	94.2	99.4
Repair and installation of machinery and equipment	104.7	87.2	122.2
Electricity, gas, steam and air conditioning supply	100.1	83.4	101.9
Electricity, gas, steam and air conditioning supply	100.1	83.4	101.9

⁴ In the tables are not included data that according to the Law on Statistics are confidential and in this way they are statistical secrecy.

Table 2

Industrial Turnover Indices in April 2010⁵
(Preliminary data)

Economic activities	2005=100	Previous month=100	The same month of 2009=100
Industry	131.5	98.1	109.7
Mining and quarrying	150.3	118.3	135.4
of which:			
Mining of coal and lignite	82.9	62.4	68.9
Mining of metal ores	253.3	156.7	218.9
Other mining and quarrying	78.1	92.1	63.9
Manufacturing	126.0	101.4	110.3
of which:			
Manufacture of food products	170.8	91.3	112.1
Manufacture of beverages	126.4	100.7	89.5
Manufacture of tobacco products	93.1	121.4	72.8
Manufacture of textiles	91.5	106.0	98.6
Manufacture of wearing apparel	83.9	91.4	88.4
Manufacture of leather and related products	86.4	90.5	113.4
Manufacture of wood and of products of wood and cork, except furniture; manufacture of articles of straw and plaiting materials	98.3	104.5	103.4
Manufacture of paper and paper products	125.0	99.4	133.8
Printing and reproduction of recorded media	96.9	95.7	94.1
Manufacture of chemicals and chemical products	123.5	74.3	99.6
Manufacture of basic pharmaceutical products and pharmaceutical preparations	98.7	89.1	110.9
Manufacture of rubber and plastic products	127.2	100.2	94.9
Manufacture of other non-metallic mineral products	110.8	112.9	79.8
Manufacture of basic metals	141.8	94.9	129.1
Manufacture of fabricated metal products, except machinery and equipment	117.2	83.2	90.6
Manufacture of computer, electronic and optical products	107.7	99.8	103.8
Manufacture of electrical equipment	173.3	91.9	115.1
Manufacture of machinery and equipment n.e.c.	117.6	95.6	99.2
Manufacture of motor vehicles, trailers and semi-trailers	127.1	100.6	160.5
Manufacture of other transport equipment	152.9	89.2	109.8
Manufacture of furniture	105.0	91.5	90.6
Other manufacturing	146.3	98.5	91.8
Repair and installation of machinery and equipment	150.8	85.1	127.9
Electricity, gas, steam and air conditioning supply	150.9	85.1	104.0
Electricity, gas, steam and air conditioning supply	150.9	85.1	104.0

⁵ In the tables are not included data that according to the Law on Statistics are confidential and in this way they are statistical secrecy.