

Industrial Production Indexes and Industrial Turnover Indexes in May 2009^{1,2}

1. Industrial Production Indexes³

In May 2009, by preliminary data Industrial Production Index decreased by 1.0 per cent as compared to the previous month.

Industrial Production Index in manufacturing industry, in May 2009 rose 0.1 per cent compared to April 2009. The most significant increases of production were: 47.0 per cent in manufacture of tobacco products, 9.8 per cent in manufacture of beverages, 5.7 per cent in manufacture of basic metals. There were decreases in manufacture of chemicals and chemical products by 22.2 per cent, manufacture of fabricated metal products, except machinery and equipment by 16.2 per cent, manufacture of basic pharmaceutical products and pharmaceutical preparations by 11.2 per cent, manufacture of textiles by 10.7 per cent. Decrease by 6.3 per cent was registered in electricity, gas, steam and air conditioning supply.

In May 2009, industrial production decreased by 22.1 per cent as compared to May 2008. Production of intermediate goods fell by 33.7 per cent, production of investment goods - by 27.2 per cent and production of energy - by 10.5 per cent.

2. Industrial Turnover Indexes⁴

By preliminary data in May 2009 Industrial Turnover Index decreased by 1.6 per cent as compared to the previous month.

In May 2009, the turnover in manufacturing industry rose 0.1 per cent as compared to April 2009, while in electricity, gas, steam and air conditioning supply there was decrease by 7.6 per cent.

Total industrial turnover in May 2009 decreased by 24.0 per cent compared to May 2008. Manufacturing industry decreased by 27.5 per cent, electricity, gas, steam and air conditioning supply - by 6.3 per cent.

¹ May 2009 data are preliminary.

² Since January 2009, Industrial Production Indexes and Industrial Turnover Indexes are calculated according to the new Classification of Economic Activities NACE.BG 2008. At the same time, the base year has been changed and indexes are calculated at 2005 as a base year. Historical data series have been recalculated back to 2000 and they are posted in NSI web-site (http://www.nsi.bg/Index_e.htm).

³ Monthly Industrial Production and Industrial turnover indexes measure changes in **production and turnover values** of industrial enterprises. This information can be used to assess the current economic development and for short-term forecasts. Indexes do not measure the actual production level, it aims to measure the average change in value of production between two points of time

Indexes are compiled on the base of information collected through representative sampling survey on industrial enterprises. The sample covers enterprises with annual turnover more than 97% of total turnover in industry.

Industrial production indexes are calculated at constant base year (2005) that is to say they are weighted with the structure of the value added at factor costs in the base year

⁴ The turnover comprises the totals invoiced by the observation units plus taxes on products (excise duty). Turnover indexes are calculated at 2005 as a base year through direct comparison of the values of the turnover at current prices, turnover values are not corrected with the price changes. **The Turnover indexes reflect the development of the value of sales as well as changes in prices.**

Final data on Industrial Production and Turnover indexes can be found in NSI internet web-site: (http://www.nsi.bg/Index_e.htm).

Industrial Production Indexes and Industrial Turnover Indexes (2005 = 100)

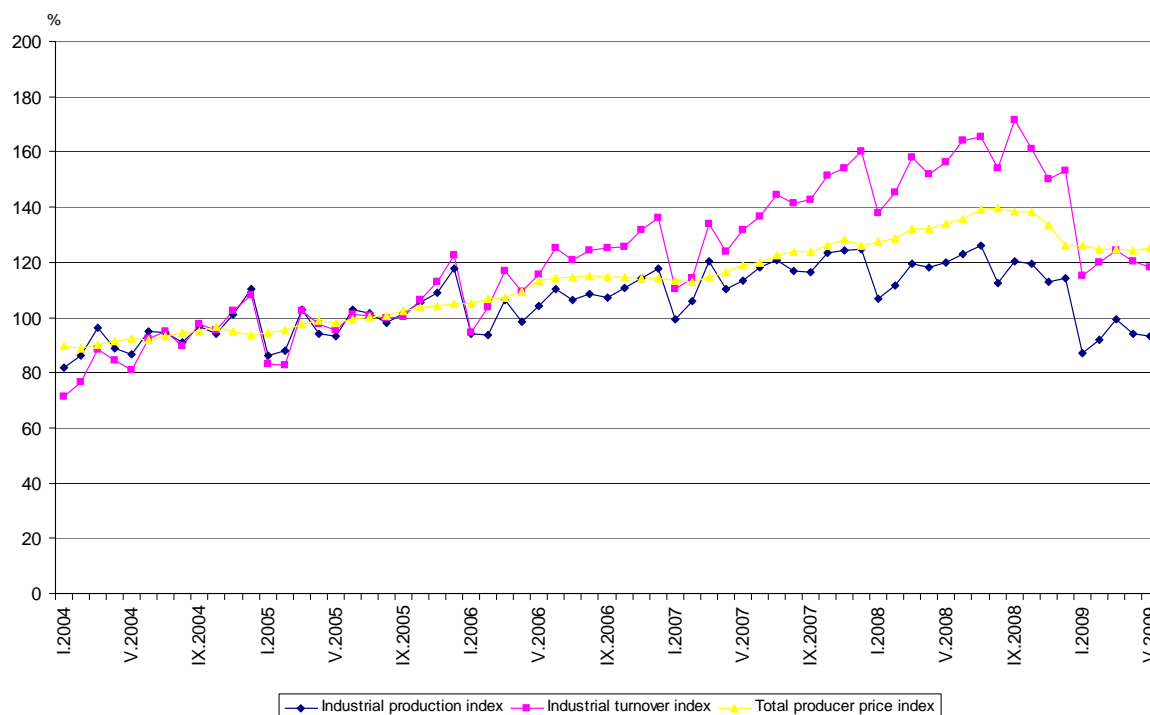


Table 1

Industrial Production Indexes in May 2009⁵
(Preliminary data)

Economic activities	2005=100	Previous month=100	The same month of 2008=100
Industry	93.3	99.0	77.9
Mining and quarrying	71.6	100.8	71.5
of which:			
Mining of coal and lignite	72.6	93.7	76.5
Mining of metal ores	76.8	106.3	77.3
Other mining and quarrying	87.8	100.5	62.2
Manufacturing	95.5	100.1	76.4
of which:			
Manufacture of food products	106.4	96.1	91.0
Manufacture of beverages	110.9	109.8	83.4
Manufacture of tobacco products	127.5	147.0	93.1
Manufacture of textiles	72.7	89.3	60.6
Manufacture of wearing apparel	68.6	95.5	71.1
Manufacture of leather and related products	71.8	104.4	77.6
Manufacture of wood and of products of wood and cork, except furniture; manufacture of articles of straw and plaiting materials	64.7	103.0	55.7
Manufacture of paper and paper products	73.3	92.5	65.3
Printing and reproduction of recorded media	118.2	100.2	104.9
Manufacture of chemicals and chemical products	59.4	77.8	50.9
Manufacture of basic pharmaceutical products and pharmaceutical preparations	67.1	88.8	69.5
Manufacture of rubber and plastic products	101.7	94.5	76.1
Manufacture of other non-metallic mineral products	99.0	98.6	59.8
Manufacture of basic metals	98.0	105.7	81.8
Manufacture of fabricated metal products, except machinery and equipment	75.7	83.8	56.8
Manufacture of computer, electronic and optical products	90.0	104.6	93.7
Manufacture of electrical equipment	111.9	90.5	67.8
Manufacture of machinery and equipment n.e.c.	88.7	86.6	64.7
Manufacture of motor vehicles, trailers and semi-trailers	107.0	115.1	77.7
Manufacture of other transport equipment	128.6	163.5	88.7
Manufacture of furniture	92.2	99.1	66.4
Other manufacturing	150.7	110.1	96.3
Repair and installation of machinery and equipment	97.3	113.5	80.6
Electricity, gas, steam and air conditioning supply	93.5	93.7	83.9
Electricity, gas, steam and air conditioning supply	93.5	93.7	83.9

⁵ In the tables are not included data that according to the Law on Statistics are confidential and in this way they are statistical secrecy.

Industrial Turnover Indexes in May 2009⁶
(Preliminary data)

Economic activities	2005=100	Previous month=100	The same month of 2008=100
Industry	118.3	98.4	76.0
Mining and quarrying	113.0	101.8	62.9
of which:			
Mining of coal and lignite	115.7	96.2	97.6
Mining of metal ores	126.4	109.2	52.9
Other mining and quarrying	115.9	94.8	68.3
Manufacturing	114.5	100.1	72.5
of which:			
Manufacture of food products	166.1	109.0	100.8
Manufacture of beverages	152.0	107.6	93.4
Manufacture of tobacco products	106.3	83.2	106.0
Manufacture of textiles	84.0	90.5	68.2
Manufacture of wearing apparel	89.8	94.6	79.4
Manufacture of leather and related products	78.0	102.4	80.4
Manufacture of wood and of products of wood and cork, except furniture; manufacture of articles of straw and plaiting materials	94.8	99.7	66.1
Manufacture of paper and paper products	82.6	88.4	65.1
Printing and reproduction of recorded media	124.1	100.2	112.8
Manufacture of chemicals and chemical products	117.0	94.4	82.0
Manufacture of basic pharmaceutical products and pharmaceutical preparations	87.4	98.2	80.3
Manufacture of rubber and plastic products	121.0	90.3	71.9
Manufacture of other non-metallic mineral products	126.8	91.3	64.4
Manufacture of basic metals	100.4	88.8	55.8
Manufacture of fabricated metal products, except machinery and equipment	105.0	82.9	64.4
Manufacture of computer, electronic and optical products	99.2	95.6	88.2
Manufacture of electrical equipment	144.4	96.9	75.9
Manufacture of machinery and equipment n.e.c.	100.6	84.9	61.5
Manufacture of motor vehicles, trailers and semi-trailers	83.1	105.1	45.6
Manufacture of other transport equipment	163.2	134.8	120.6
Manufacture of furniture	115.0	100.1	72.3
Other manufacturing	183.7	115.3	136.8
Repair and installation of machinery and equipment	142.7	121.0	82.7
Electricity, gas, steam and air conditioning supply	134.6	92.4	93.7
Electricity, gas, steam and air conditioning supply	134.6	92.4	93.7

⁶ In the tables are not included data that according to the Law on Statistics are confidential and in this way they are statistical secrecy.