

Industrial Production Indices and Industrial Turnover Indices in October 2009^{1,2}

1. Industrial Production Indices³

The preliminary data showed that the Industrial Production Index decreased by 16.1% in October 2009 as compared to October 2008. Decreases were registered in the manufacturing by 21.5% and in the electricity, gas, steam and air conditioning supply by 6.2%, while in the mining and quarrying industry the production increased by 17.7%. The production of intermediate goods fell by 23.8%, the production of investment goods by 23.4%, the production of energy by 1.9%.

In October 2009, the Industrial Production Index increased by 5.5% as compared to the previous month. Increases were registered in the mining and quarrying industry by 34.2%, in the manufacturing by 3.4%, and in the electricity, gas, steam and air conditioning supply by 6.3%. The most significant increases of production were seen in the manufacture of basic metals by 22.6%, in the printing and reproduction of recorded media by 16.0%, in the manufacture of wearing apparel by 6.6%. There were decreases in the manufacture of chemicals and chemical products by 11.6%, in the manufacture of tobacco products by 10.9%, in the manufacture of paper and paper products by 3.5%.

2. Industrial Turnover Indices⁴

According to the preliminary data in October 2009 the Industrial Turnover Index decreased by 19.4% compared to October 2008. The manufacturing reported a drop of 21.4%, the electricity, gas, steam and air conditioning supply - 17.0%, while in the mining and quarrying industry an increase by 11.9% was seen.

In October 2009, the turnover increased by 5.2% as compared to the previous month. The increase in the manufacturing industry was by 3.6% and in the electricity, gas, steam and air conditioning supply by 8.2%.

¹ October 2009 data are preliminary.

² Since January 2009, Industrial Production Indices and Industrial Turnover Indices are calculated according to the new Classification of Economic Activities NACE.BG 2008. At the same time, the base year has been changed and indices are calculated at 2005 as a base year. Historical data series have been recalculated back to 2000 and they are posted in NSI web-site (http://www.nsi.bg/Op_e/Op_e.htm).

³ Monthly Industrial Production and Industrial turnover indices measure changes in **production and turnover values** of industrial enterprises. This information can be used to assess the current economic development and for short-term forecasts. Indices do not measure the actual production level, it aims to measure the average change in value of production between two points of time

Indices are compiled on the base of information collected through representative sampling survey on industrial enterprises. The sample covers enterprises with annual turnover more than 97% of total turnover in industry.

Industrial production indices are calculated at constant base year (2005) that is to say they are weighted with the structure of the value added at factor costs in the base year

⁴ The turnover comprises the totals invoiced by the observation units plus taxes on products (excise duty). Turnover indices are calculated at 2005 as a base year through direct comparison of the values of the turnover at current prices, turnover values are not corrected with the price changes. **The Turnover indices reflect the development of the value of sales as well as changes in prices.**

The final data on Industrial Production and Turnover Indices can be found in NSI internet web-site: (http://www.nsi.bg/Op_e/Op_e.htm).

Industrial Production Indices and Industrial Turnover Indices (2005 = 100)

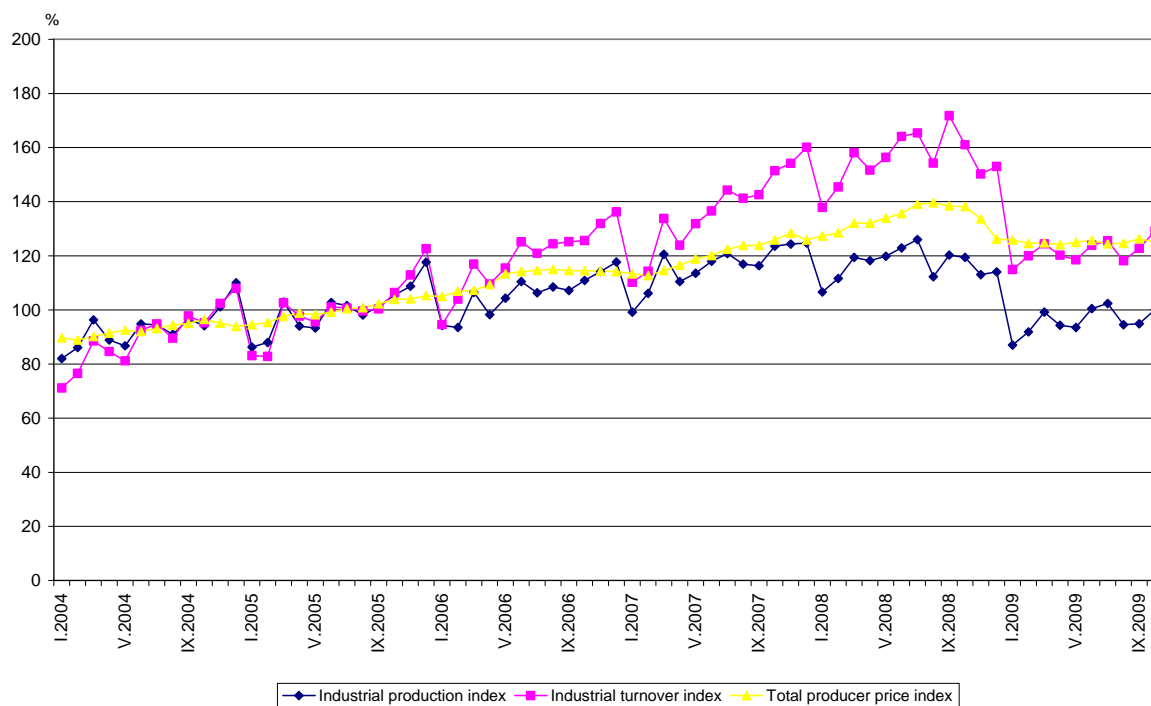


Table 1

Industrial Production Indices in October 2009⁵
(Preliminary data)

Economic activities	2005=100	Previous month=100	The same month of 2008=100
Industry	100.2	105.5	83.9
Mining and quarrying	92.3	134.2	117.7
of which:			
Mining of coal and lignite	121.2	138.1	116.1
Mining of metal ores	90.7	142.0	199.4
Other mining and quarrying	79.0	104.3	53.4
Manufacturing	98.0	103.4	78.5
of which:			
Manufacture of food products	118.2	100.7	83.0
Manufacture of beverages	90.4	96.5	80.6
Manufacture of tobacco products	143.7	89.1	91.9
Manufacture of textiles	67.1	105.6	69.8
Manufacture of wearing apparel	72.5	106.6	76.7
Manufacture of leather and related products	84.4	107.2	67.7
Manufacture of wood and of products of wood and cork, except furniture; manufacture of articles of straw and plaiting materials	76.0	99.5	62.0
Manufacture of paper and paper products	77.6	96.5	72.0
Printing and reproduction of recorded media	148.7	116.0	102.5
Manufacture of chemicals and chemical products	79.8	88.4	69.0
Manufacture of basic pharmaceutical products and pharmaceutical preparations	80.4	106.0	71.0
Manufacture of rubber and plastic products	119.5	103.0	79.6
Manufacture of other non-metallic mineral products	89.5	100.5	53.0
Manufacture of basic metals	107.5	122.6	102.2
Manufacture of fabricated metal products, except machinery and equipment	82.5	96.5	66.0
Manufacture of computer, electronic and optical products	87.7	91.0	93.7
Manufacture of electrical equipment	148.3	103.4	78.7
Manufacture of machinery and equipment n.e.c.	98.2	97.1	67.3
Manufacture of motor vehicles, trailers and semi-trailers	137.6	117.1	103.9
Manufacture of other transport equipment	131.9	125.6	94.5
Manufacture of furniture	90.7	102.0	53.3
Other manufacturing	192.4	103.5	124.1
Repair and installation of machinery and equipment	100.4	116.1	82.4
Electricity, gas, steam and air conditioning supply	110.4	106.3	93.8
Electricity, gas, steam and air conditioning supply	110.4	106.3	93.8

⁵ In the tables are not included data that according to the Law on Statistics are confidential and in this way they are statistical secrecy.

Table 2

Industrial Turnover Indices in October 2009⁶
(Preliminary data)

Economic activities	2005=100	Previous month=100	The same month of 2008=100
Industry	129.2	105.2	80.6
Mining and quarrying	149.3	133.4	111.9
of which:			
Mining of coal and lignite	184.8	135.3	115.7
Mining of metal ores	164.3	157.8	164.4
Other mining and quarrying	113.9	90.0	59.0
Manufacturing	124.5	103.6	78.6
of which:			
Manufacture of food products	178.0	99.3	79.1
Manufacture of beverages	116.8	88.8	80.7
Manufacture of tobacco products	165.6	108.7	95.5
Manufacture of textiles	82.3	114.1	75.4
Manufacture of wearing apparel	96.4	111.2	82.2
Manufacture of leather and related products	90.1	112.6	65.7
Manufacture of wood and of products of wood and cork, except furniture; manufacture of articles of straw and plaiting materials	98.4	101.3	61.2
Manufacture of paper and paper products	84.0	92.2	68.1
Printing and reproduction of recorded media	134.2	110.2	94.2
Manufacture of chemicals and chemical products	131.1	95.9	82.7
Manufacture of basic pharmaceutical products and pharmaceutical preparations	95.1	96.0	75.9
Manufacture of rubber and plastic products	143.2	104.8	72.6
Manufacture of other non-metallic mineral products	120.3	99.7	55.0
Manufacture of basic metals	130.2	114.3	93.3
Manufacture of fabricated metal products, except machinery and equipment	114.9	97.1	73.1
Manufacture of computer, electronic and optical products	100.0	93.2	90.6
Manufacture of electrical equipment	195.9	105.9	82.7
Manufacture of machinery and equipment n.e.c.	122.9	102.5	69.0
Manufacture of motor vehicles, trailers and semi-trailers	107.0	113.5	56.7
Manufacture of other transport equipment	151.8	114.0	118.6
Manufacture of furniture	116.3	107.8	57.5
Other manufacturing	187.7	105.7	119.6
Repair and installation of machinery and equipment	139.6	116.9	81.7
Electricity, gas, steam and air conditioning supply	144.3	108.2	83.0
Electricity, gas, steam and air conditioning supply	144.3	108.2	83.0

⁶ In the tables are not included data that according to the Law on Statistics are confidential and in this way they are statistical secrecy.