

Industrial Production Indices and Industrial Turnover Indices in January 2010¹

1. Industrial Production Indices²

The preliminary data showed that the Industrial Production Index decreased by 0.9% in January 2010 as compared to January 2009. Decrease was registered in the manufacturing by 1.5%, while in the electricity, gas, steam and air conditioning supply the production increased by 1.1% and in the mining and quarrying industry by 0.4%. The production of investment goods fell by 8.5%, the production of intermediate goods by 1.0% while the production of energy rose by 6.1%.

In January 2010, the Industrial Production Index decreased by 14.7% as compared to the previous month. Decreases were registered in the manufacturing by 19.5%, in the mining and quarrying industry by 11.4% and in the electricity, gas, steam and air conditioning supply by 3.5%. The most significant decreases of production were seen in the manufacture of other non-metallic mineral products by 38.9%, in the manufacture of fabricated metal products, except machinery and equipment by 31.3%, in the printing and reproduction of recorded media by 25.8%, in the manufacture of food products by 25.1%. There were increases in the manufacture of basic metals by 4.2%, in the manufacture of paper and paper products by 2.8%.

2. Industrial Turnover Indices³

According to the preliminary data in January 2010 the Industrial Turnover Index decreased by 2.8% compared to January 2009. The electricity, gas, steam and air conditioning supply reported a drop of 8.9%, while the manufacturing rose by 0.2% and in the mining and quarrying industry an increase by 0.3% was seen.

In January 2010, the turnover decreased by 18.1% as compared to the previous month. The decrease in the manufacturing was by 27.4%, while in the electricity, gas, steam and air conditioning supply an increase by 8.6% was registered.

The final data on Industrial Production and Turnover Indices can be found in NSI internet web-site: (http://www.nsi.bg/Op_e/Op_e.htm).

¹ January 2010 data are preliminary.

² Monthly Industrial Production and Industrial turnover indices measure changes in **production and turnover values** of industrial enterprises. This information can be used to assess the current economic development and for short-term forecasts. Indices do not measure the actual production level, it aims to measure the average change in value of production between two points of time

Indices are compiled on the base of information collected through representative sampling survey on industrial enterprises. The sample covers enterprises with annual turnover more than 97% of total turnover in industry.

Industrial production indices are calculated at constant base year (2005) that is to say they are weighted with the structure of the value added at factor costs in the base year

³ The turnover comprises the totals invoiced by the observation units plus taxes on products (excise duty). Turnover indices are calculated at 2005 as a base year through direct comparison of the values of the turnover at current prices, turnover values are not corrected with the price changes. **The Turnover indices reflect the development of the value of sales as well as changes in prices.**

Industrial Production Indices and Industrial Turnover Indices (2005 = 100)

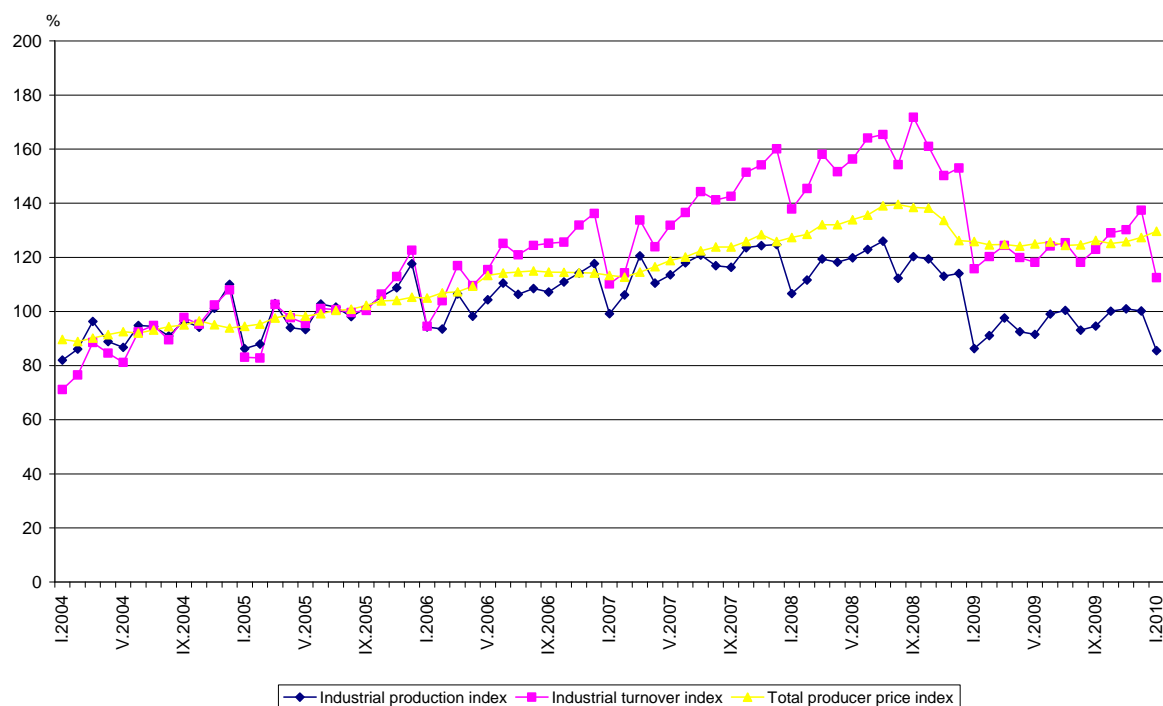


Table 1

Industrial Production Indices in January 2010⁴
(Preliminary data)

Economic activities	2005=100	Previous month=100	The same month of 2009=100
Industry	85.5	85.3	99.1
Mining and quarrying	69.1	88.6	100.4
of which:			
Mining of coal and lignite	101.2	103.9	88.4
Mining of metal ores	61.6	80.6	134.1
Other mining and quarrying	55.6	70.9	104.6
Manufacturing	75.6	80.5	98.5
of which:			
Manufacture of food products	92.4	74.9	94.6
Manufacture of beverages	55.7	55.2	79.5
Manufacture of tobacco products	56.3	58.8	109.0
Manufacture of textiles	46.0	79.5	79.5
Manufacture of wearing apparel	63.2	87.0	77.3
Manufacture of leather and related products	78.4	118.3	93.8
Manufacture of wood and of products of wood and cork, except furniture; manufacture of articles of straw and plaiting materials	51.3	71.5	100.9
Manufacture of paper and paper products	88.0	102.8	113.7
Printing and reproduction of recorded media	93.4	74.2	90.9
Manufacture of chemicals and chemical products	86.5	97.5	111.2
Manufacture of basic pharmaceutical products and pharmaceutical preparations	73.8	82.5	119.8
Manufacture of rubber and plastic products	80.5	77.9	97.2
Manufacture of other non-metallic mineral products	42.0	61.1	62.8
Manufacture of basic metals	82.8	104.2	101.4
Manufacture of fabricated metal products, except machinery and equipment	62.4	68.7	93.4
Manufacture of computer, electronic and optical products	81.5	59.4	128.2
Manufacture of electrical equipment	129.6	93.6	122.7
Manufacture of machinery and equipment n.e.c.	75.9	76.1	73.4
Manufacture of motor vehicles, trailers and semi-trailers	133.9	111.2	193.2
Manufacture of other transport equipment	41.1	40.1	86.3
Manufacture of furniture	71.2	74.6	89.6
Other manufacturing	95.8	94.6	90.0
Repair and installation of machinery and equipment	67.4	57.9	99.0
Electricity, gas, steam and air conditioning supply	128.4	96.5	101.1
Electricity, gas, steam and air conditioning supply	128.4	96.5	101.1

⁴ In the tables are not included data that according to the Law on Statistics are confidential and in this way they are statistical secrecy.

Table 2

Industrial Turnover Indices in January 2010⁵
(Preliminary data)

Economic activities	2005=100	Previous month=100	The same month of 2009=100
Industry	112.5	81.9	97.2
Mining and quarrying	110.5	82.9	100.3
of which:			
Mining of coal and lignite	152.0	98.1	87.4
Mining of metal ores	118.5	77.1	130.2
Other mining and quarrying	68.9	68.1	89.0
Manufacturing	92.3	72.6	100.2
of which:			
Manufacture of food products	137.9	71.3	89.5
Manufacture of beverages	79.5	58.0	89.4
Manufacture of tobacco products	41.2	13.8	113.2
Manufacture of textiles	59.7	95.2	82.9
Manufacture of wearing apparel	86.6	89.6	82.2
Manufacture of leather and related products	91.2	128.6	91.2
Manufacture of wood and of products of wood and cork, except furniture; manufacture of articles of straw and plaiting materials	59.7	64.5	76.8
Manufacture of paper and paper products	90.3	99.1	109.3
Printing and reproduction of recorded media	85.2	72.4	85.4
Manufacture of chemicals and chemical products	107.3	80.4	106.2
Manufacture of basic pharmaceutical products and pharmaceutical preparations	81.7	70.4	121.8
Manufacture of rubber and plastic products	90.4	71.7	85.6
Manufacture of other non-metallic mineral products	54.9	57.8	60.7
Manufacture of basic metals	99.5	94.4	115.2
Manufacture of fabricated metal products, except machinery and equipment	78.6	64.5	84.8
Manufacture of computer, electronic and optical products	82.9	65.3	127.0
Manufacture of electrical equipment	166.3	92.2	124.9
Manufacture of machinery and equipment n.e.c.	89.9	68.3	81.0
Manufacture of motor vehicles, trailers and semi-trailers	99.3	102.4	147.5
Manufacture of other transport equipment	79.5	53.3	105.0
Manufacture of furniture	84.8	72.4	80.8
Other manufacturing	85.8	77.4	84.0
Repair and installation of machinery and equipment	95.5	57.6	100.8
Electricity, gas, steam and air conditioning supply	197.5	108.6	91.1
Electricity, gas, steam and air conditioning supply	197.5	108.6	91.1

⁵ In the tables are not included data that according to the Law on Statistics are confidential and in this way they are statistical secrecy.