

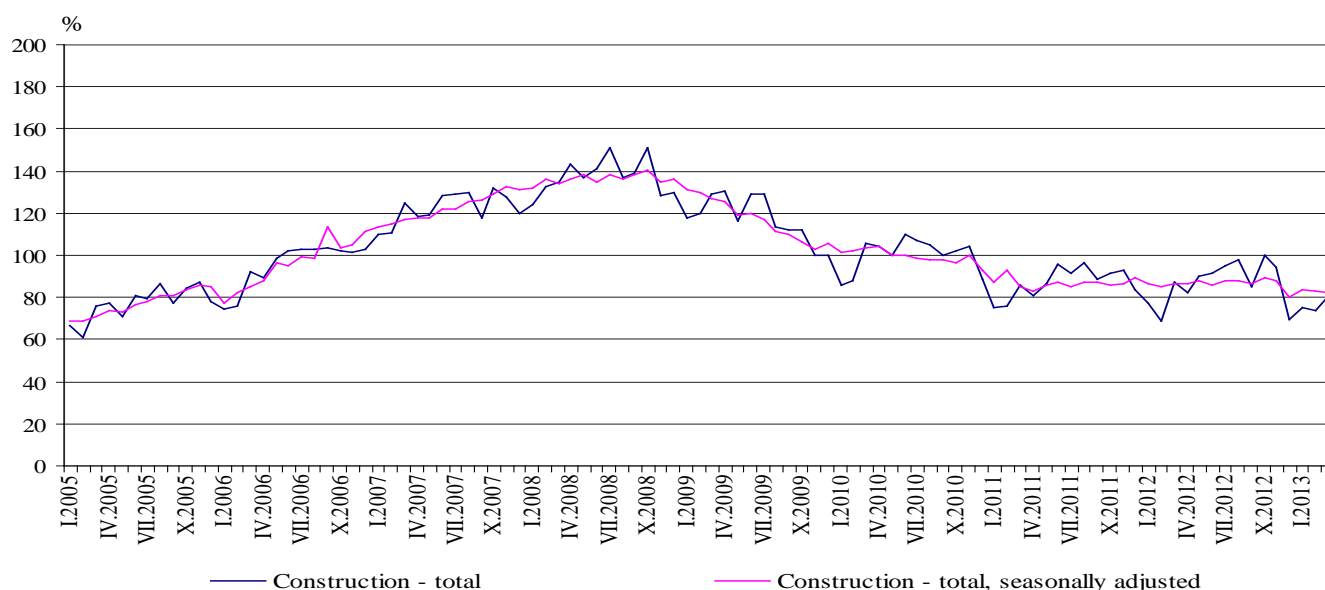
CONSTRUCTION PRODUCTION INDICES¹ IN MARCH 2013²

In compliance with Regulation (EC) № 1165/98 and amendment Regulation (EC) № 1158/2005 since January 2013 the base year for Short-term business statistics has been changed. All short-term indicators presented in the form of index is calculated and published at 2010 as a base year. The time series has been recalculated according to the new base year and with the publication of data for the first reporting period of 2013 they can be found on the website of NSI: <http://www.nsi.bg/otrasalen.php?otr=55>.

According to the preliminary data in March 2013 the index of production in section 'Construction', calculated on the base of seasonally adjusted data³, was 1.3% below the level of the previous month (Table 2).

In March 2013 working day adjusted data⁴ showed a decrease by 5.7% in the construction production, comparing to the same month of 2012 (Table 4).

Figure 1. Construction Production Indices (2010 = 100)



¹ Data for March 2013 are preliminary.

² The monthly indices show the short-term changes in the construction production between two comparable periods. This information can be used to analyze the current state of the construction activity in the country, as well as short-term forecast for its future development. The indices are calculated on the base of information on hours worked in the construction. The data are collected with monthly sample survey, which includes construction enterprises, which production exceeds 75% of the total production in construction. Construction Production Indices are calculated on the base (2010 = 100).

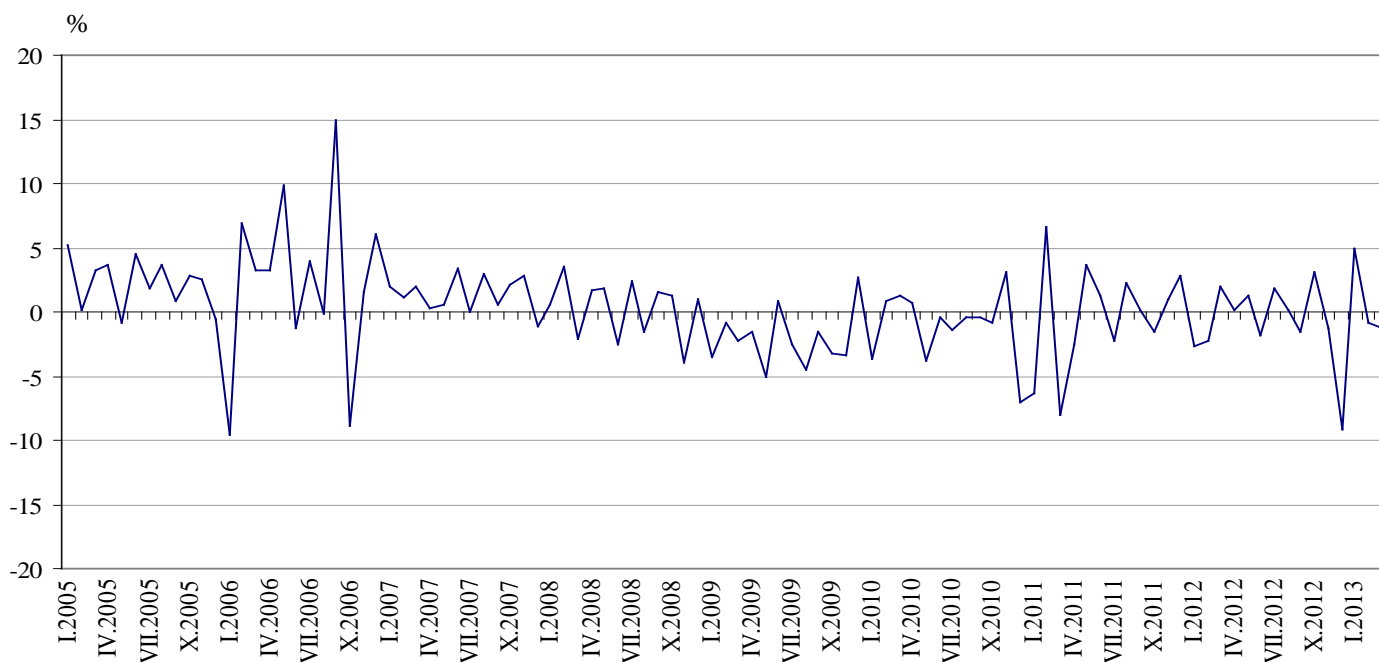
³ Seasonal adjustment is a statistical method, which eliminates the seasonal component of time series and it is particularly suitable for long-term comparisons and analysis of the data.

⁴ Working day adjustment is an adjustment for variations in monthly data, caused by calendar effects, different number of calendar and working days in the months, national holidays and outliers (for example the presence of more non-working days in May could contribute to the decline in the production in some activities).

The seasonally and working day adjusted data for period 2000 - 2013 can be found on NSI web-site: <http://www.nsi.bg/otrasalen.php?otr=32>.



Figure 2. Percentage change of the indices of the construction production compared to the previous month
(Seasonally adjusted, 2010 = 100)



1. Construction Production Indices
(Seasonally adjusted, 2010 = 100)

	2012										2013		
	III	IV	V	VI	VII	VIII	IX	X	XI	XII	I	II	III
Construction - total	86.6	86.7	87.7	86.0	87.6	87.7	86.4	89.1	88.0	80.0	83.9	83.2	82.1
Building construction	89.5	89.4	88.7	87.4	88.4	87.7	86.7	87.5	86.9	85.3	88.7	87.9	87.9
Civil engineering	82.9	83.4	86.4	84.2	86.5	87.7	86.1	91.1	89.4	73.4	77.9	77.3	74.8



Monthly changes

In March 2013 the construction production was below the level of the previous month. Index of production of civil engineering, calculated from the seasonally adjusted data decreased by 3.2%, while the production of building construction was same as the February (Table 2).

2. Percentage changes of the Construction Production Indices compared to the previous month¹

	2012										2013		
	III	IV	V	VI	VII	VIII	IX	X	XI	XII	I	II	III
Construction - total	2.0	0.1	1.2	-1.9	1.9	0.1	-1.5	3.1	-1.2	-9.1	4.9	-0.8	-1.3
Building construction	0.3	-0.1	-0.8	-1.5	1.1	-0.8	-1.1	0.9	-0.7	-1.8	4.0	-0.9	0.0
Civil engineering	4.3	0.6	3.6	-2.5	2.7	1.4	-1.8	5.8	-1.9	-17.9	6.1	-0.8	-3.2

¹ Seasonally adjusted.

3. Construction Production Indices (Working day adjusted, 2010 = 100)

	2010	2011	2012										2013		
	III	III	III	IV	V	VI	VII	VIII	IX	X	XI	XII	I	II	III
Construction - total	105.1	85.0	86.5	83.8	89.7	91.7	95.8	96.0	86.3	98.8	93.1	71.8	74.9	73.9	81.6
Building construction	106.6	91.2	89.2	85.8	90.9	92.2	97.6	97.2	87.2	98.3	92.4	74.9	80.9	79.9	88.0
Civil engineering	103.3	77.4	83.1	81.4	88.3	91.0	93.6	94.5	85.2	99.5	93.9	68.0	67.4	66.4	73.6



Annual changes

On an annual basis in March 2013, the decrease of production in construction, calculated from working day adjusted data was determined mainly from the negative rate in the civil engineering, where the drop was by 11.4%, while in the building construction reduction was by 1.3% (Table 4).

4. Percentage changes of the Construction Production Indices compared to the same month of the previous year¹

	2010	2011	2012										2013		
	III	III	III	IV	V	VI	VII	VIII	IX	X	XI	XII	I	II	III
Construction - total	-19.3	-19.1	1.8	4.1	2.6	-3.4	2.9	0.8	-2.6	5.3	1.1	-12.4	-2.2	8.0	-5.7
Building construction	-32.4	-14.4	-2.2	-0.9	-2.9	-8.8	-1.9	-3.7	-7.6	-1.1	-4.0	-11.4	0.7	15.1	-1.3
Civil engineering	7.5	-25.1	7.4	11.7	10.8	4.5	9.9	7.1	4.5	14.6	8.2	-13.9	-6.4	-1.2	-11.4

¹ Working day adjusted.