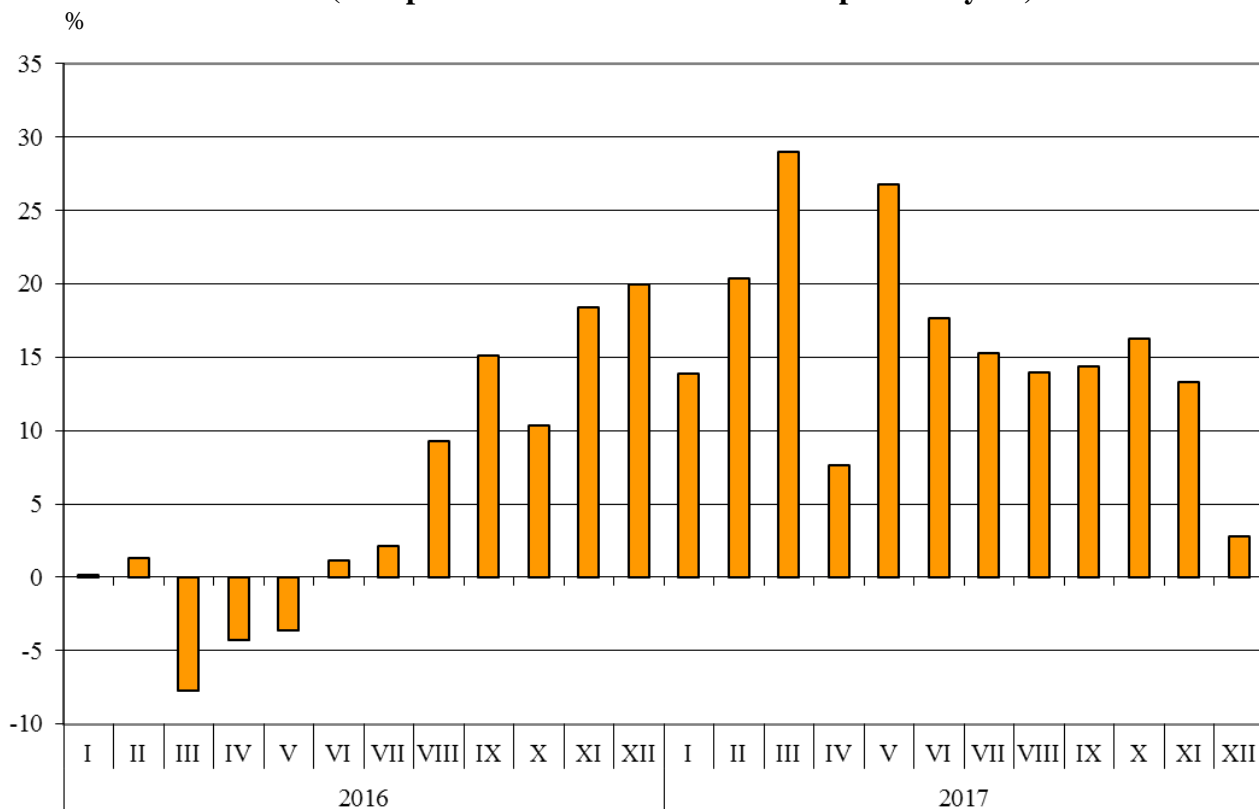




## FOREIGN TRADE IN GOODS OF BULGARIA IN 2017 - FINAL DATA

In 2017 the **goods exported** from Bulgaria amounted to 54 598.5 Million BGN or 15.7% more than in 2016 (Annex, Tables 1 and 2). In comparing monthly data for 2017 with data for the corresponding month of the previous year the highest growth in exports was observed in March (29.0%), while fall was not registered in none of the months.

**Figure 1. Nominal value<sup>1</sup> change of exports in the period 2016 - 2017  
(Compared to the same month of the previous year)**

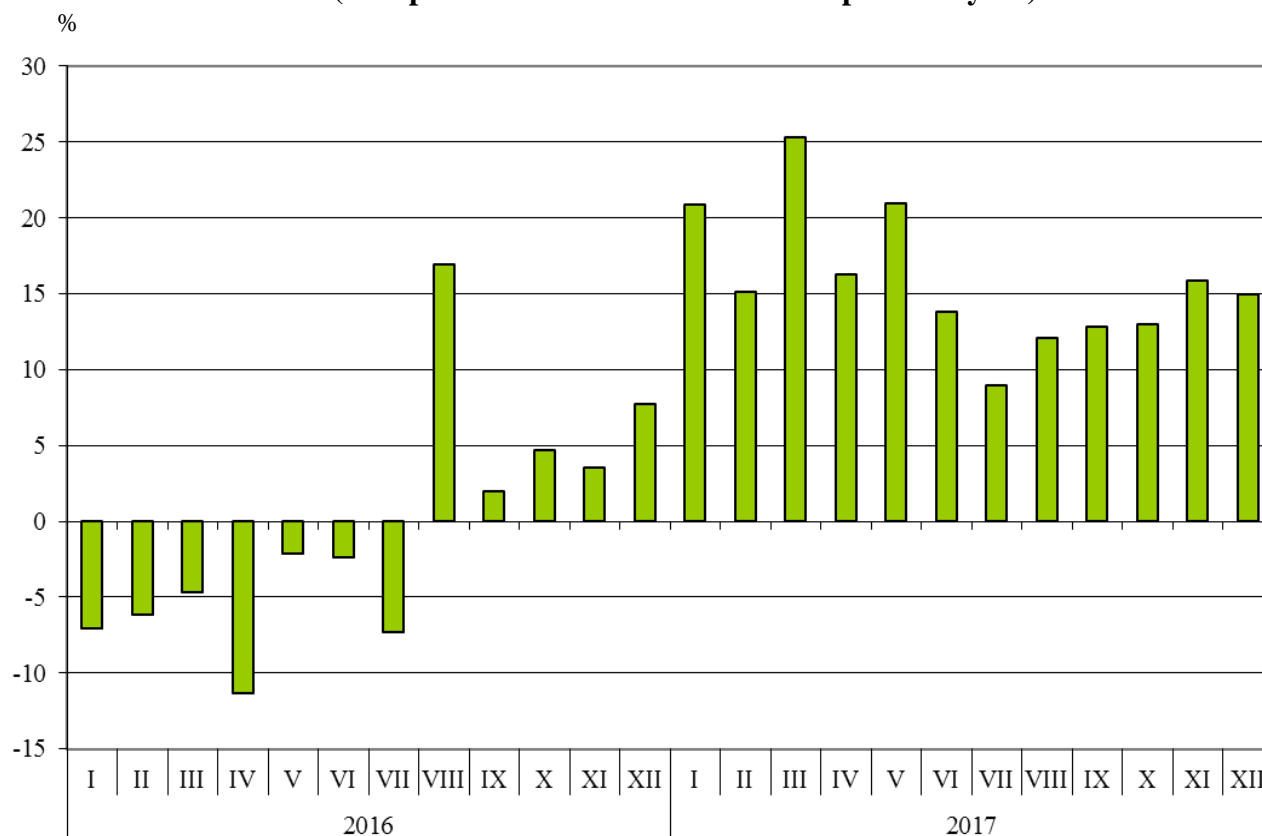


**The imported goods** in 2017 were for 59 233.4 Million BGN (at CIF prices) which is 15.7% more than the previous year (Annex, Tables 1 and 2). Analyzing the monthly data on imports in 2017 and the corresponding ones in 2016, the biggest increase was observed in March (25.3%). Decrease was not registered.

<sup>1</sup> Value changes at current prices.



**Figure 2. Nominal value<sup>1</sup> change of imports in the period 2016 - 2017  
(Compared to the same month of the previous year)**



**Foreign trade balance** (exports FOB - import CIF) was negative in 2017 and amounted to 4 634.9 Million BGN, which was 615.0 Million BGN more than the balance in 2016 (Annex, Tables 1 and 2). At FOB/FOB prices (after elimination of transport and insurance costs on imports) the negative balance in 2017 added up to 501.6 Million BGN.

The **exports** of goods from Bulgaria in 2017 distributed according to the **Standard International Trade Classification** showed that the largest growth was reported in the section 'Manufactured goods classified chiefly by material'<sup>2</sup> (33.3%). Fall was observed only in the section 'Beverages and tobacco' (11.1%) (Annex, Table 4).

<sup>1</sup> Value changes at current prices.

<sup>2</sup>The section includes the following divisions: leather, leather manufactures, n.e.s., and dressed furskins; rubber manufactures, n.e.s.; cork and wood manufactures (excluding furniture); paper, paperboard and articles of paper pulp, of paper or of paperboard; textile yarn, fabrics, made-up articles, n.e.s., and related products; non-metallic mineral manufactures, n.e.s.; iron and steel; non-ferrous metals.

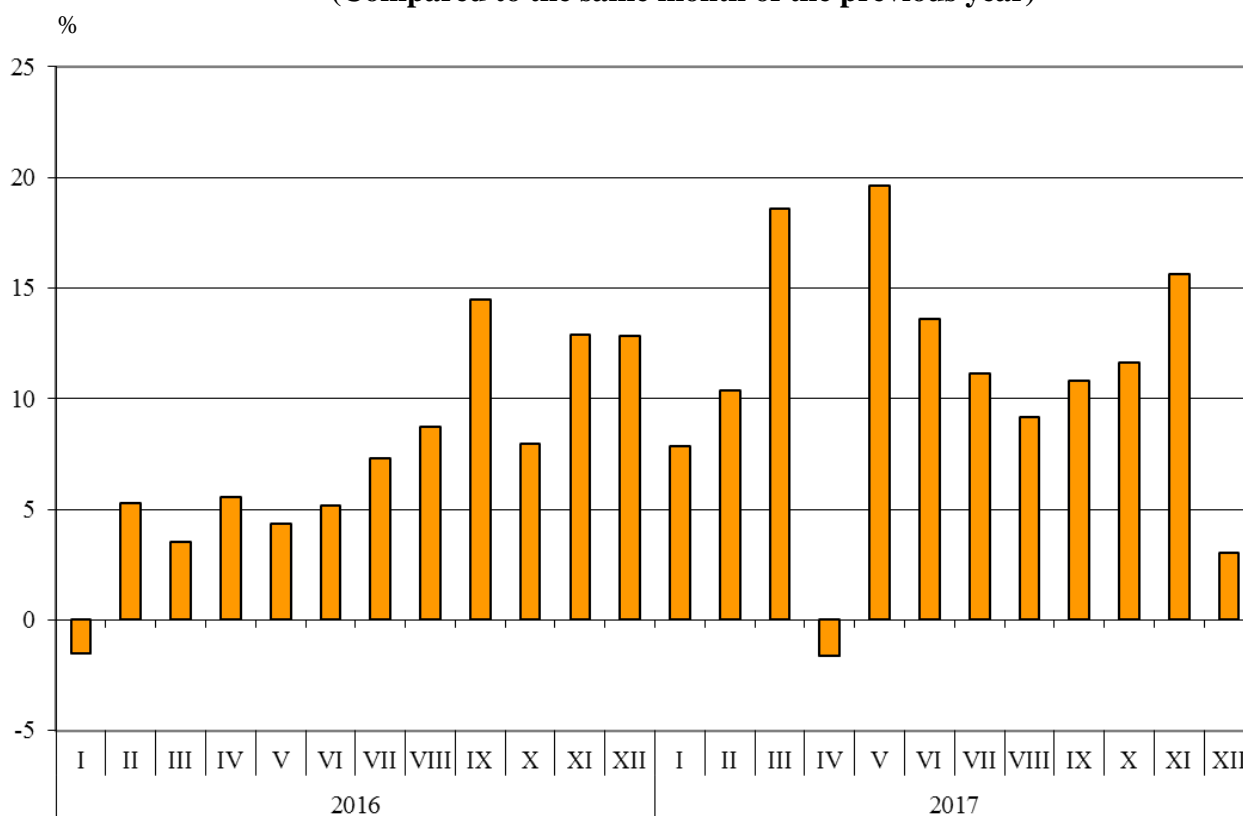


On **imports of goods**, the largest increase was registered in the section ‘Crude materials, inedible (except fuel)’<sup>1</sup> (45.7%) while decrease was not observed in none of the sections.

### Trade in goods of Bulgaria with the EU

In 2017 the **exports** of goods from Bulgaria to the **EU countries** increased by 10.9% compared to the previous year and amounted to 34 546.6 Million BGN (Annex, Tables 1 and 2). Main trade partners of Bulgaria were Germany, Italy, Romania, Greece, Belgium and France which accounted for 67.5% of the exports to the EU (Annex, Table 3).

**Figure 3. Nominal value<sup>2</sup> change of exports to EU in the period 2016 - 2017**  
(Compared to the same month of the previous year)



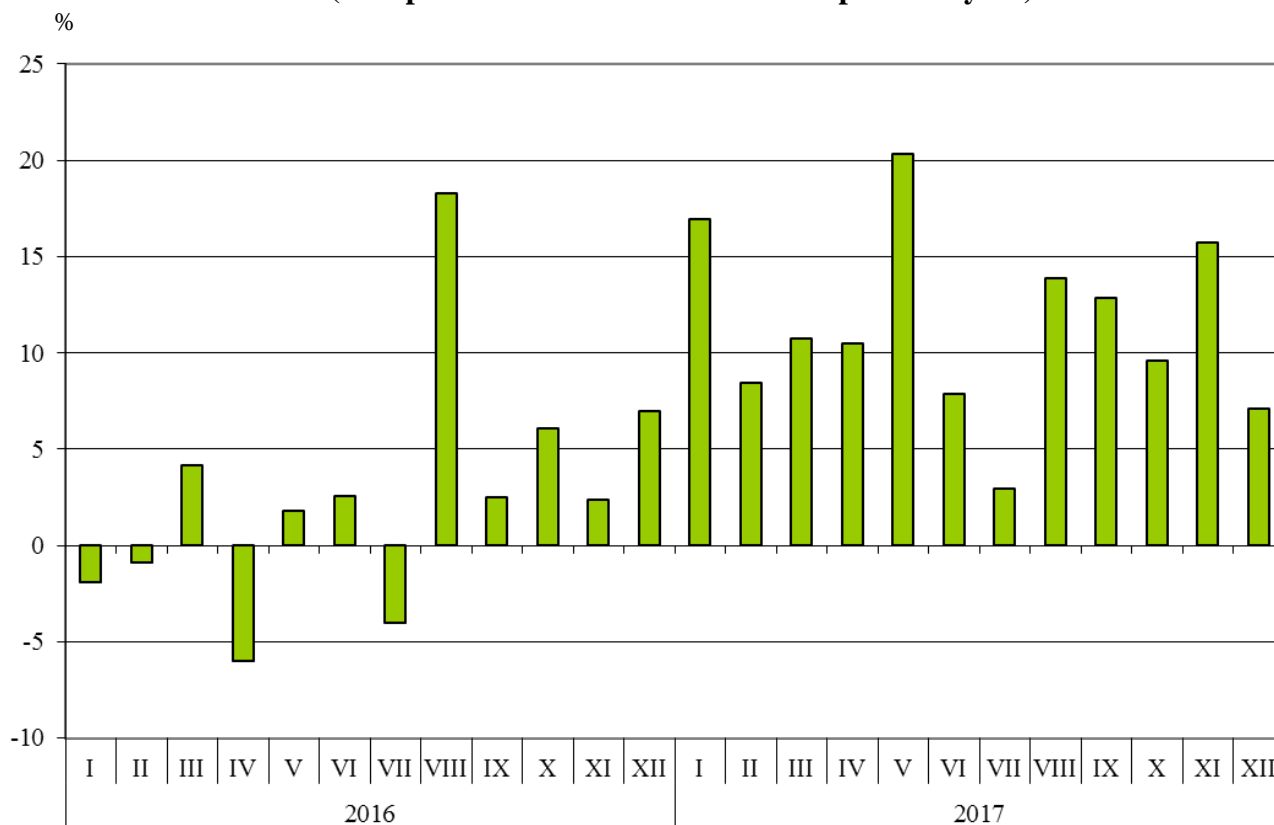
The **imports** of goods to Bulgaria from the **EU countries** in 2017 increased by 11.2% compared to 2016 and amounted to 37 807.8 Million BGN (Annex, Tables 1 and 2). The most significant amounts were reported for the goods imported from Germany, Italy, Romania, Spain and Greece which represent 56.7% from the imports from the EU.

<sup>1</sup>The section includes following divisions: raw hides, skins and furskins; oil-seeds and oleaginous fruits; crude rubber; cork and wood; pulp and waste paper; textile fibres and their wastes; crude fertilizers and crude minerals; metalliferous ores and metal scrap; crude animal and vegetable materials, n.e.s.

<sup>2</sup> Value changes at current prices.



**Figure 4. Nominal value<sup>1</sup> change of imports from EU in the period 2016 - 2017  
(Compared to the same month of the previous year)**



**Foreign trade balance** (exports FOB - import CIF) of Bulgaria with the **EU countries** in 2017 was negative and amounted to 3 261.2 Million BGN (Annex, Table 1).

The **exports** of goods from Bulgaria to the **EU**, distributed according to the **Standard International Trade Classification**, showed that in 2017 compared to 2016 the largest increase was registered in exports from the section ‘Animals and vegetable oils, fats and waxes’ (30.3%) (Annex, Table 4). The most notable fall was observed in section ‘Beverages and tobacco’ (14.8%).

The largest growth in **imports** of goods from the **EU** was registered in section ‘Crude materials, inedible (except fuel)’ (46.1%), while decrease was observed only in one section - ‘Animals and vegetable oils, fats and waxes’ (5.6%).

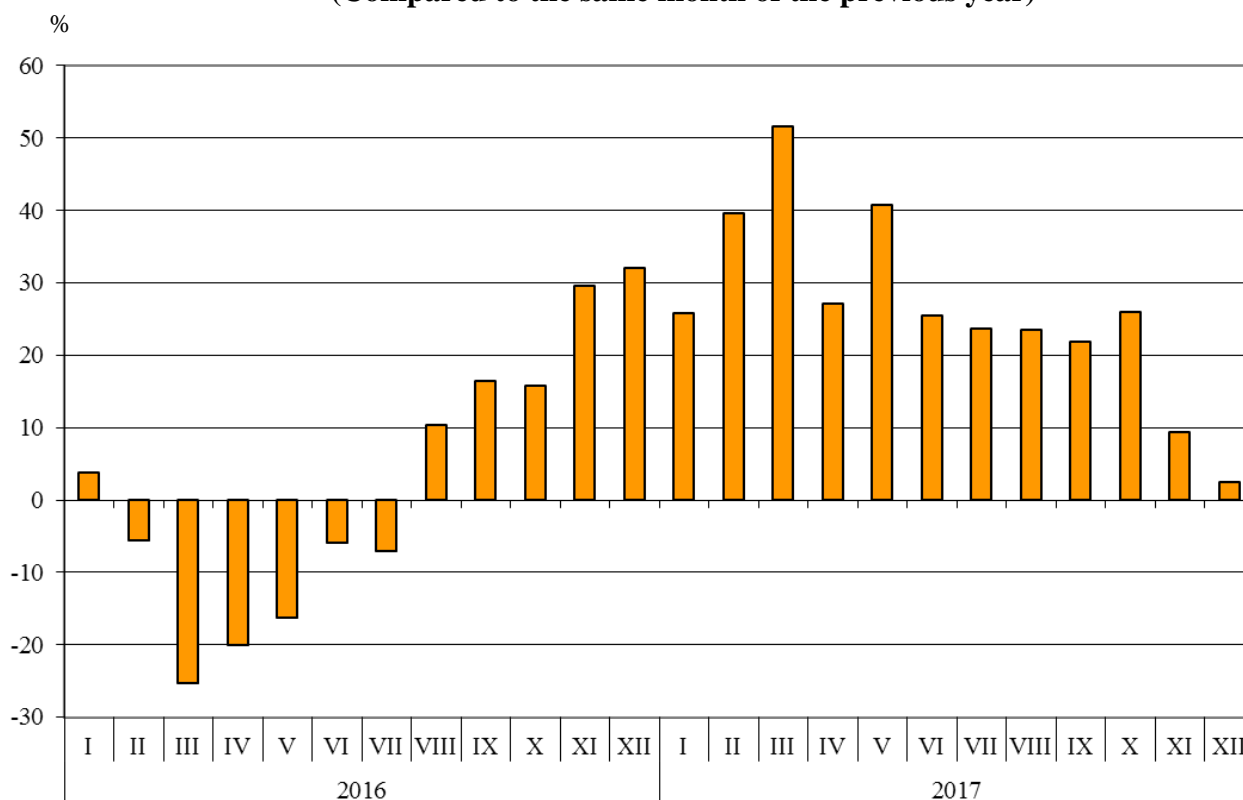
<sup>1</sup> Value changes at current prices.



## Trade in goods of Bulgaria with third countries

In 2017 the **exports** of goods from Bulgaria to **third countries** increased by 25.1% compared to the previous year and added up to 20 051.9 Million BGN (Annex, Tables 1 and 2). Leading trade partners of Bulgaria were Turkey, the Russian Federation, China, Egypt, Serbia, the United States and the Former Yugoslav Republic of Macedonia, which accounted for 55.3% of the total exports to non EU countries (Annex, Table.3).

**Figure 5. Nominal value<sup>1</sup> change of exports to non EU countries  
in the period 2016 - 2017  
(Compared to the same month of the previous year)**

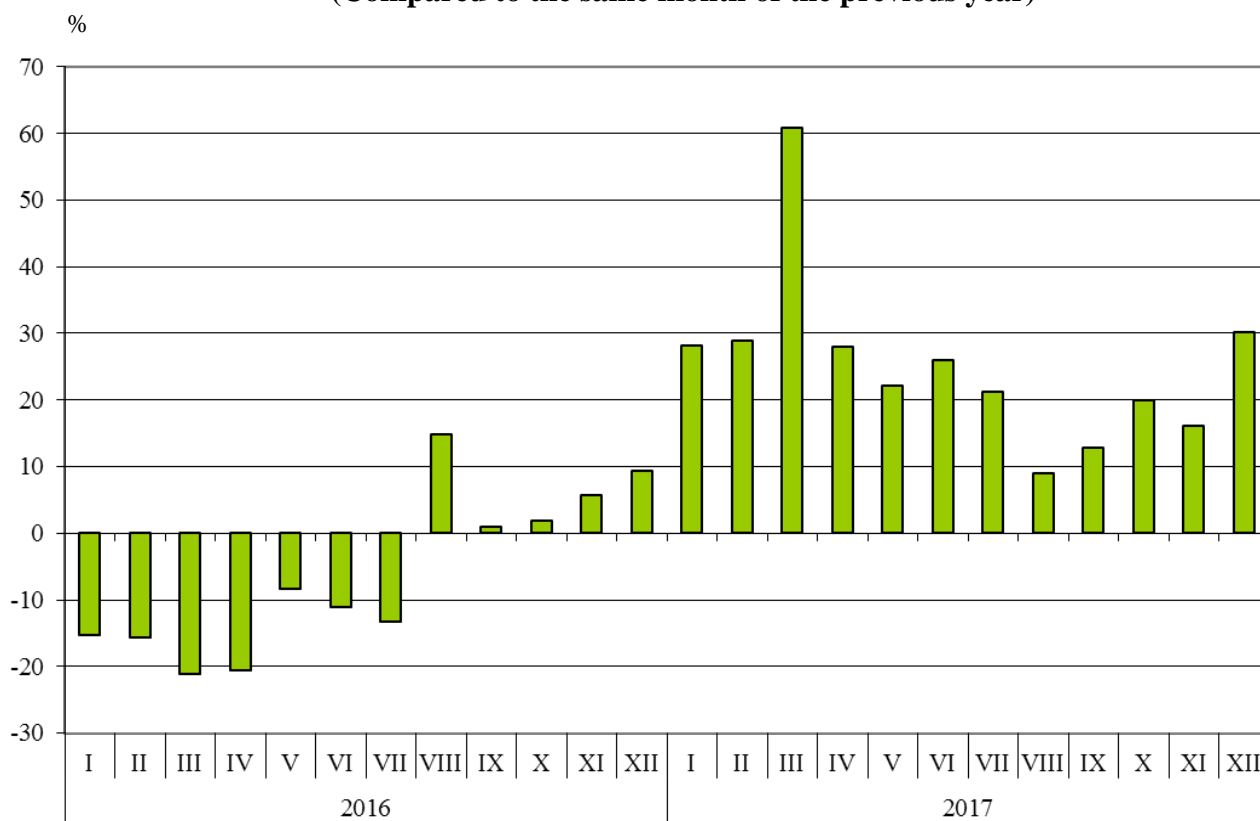


The **imports** of goods to Bulgaria **from third countries** in 2017 increased by 24.4% compared to 2016 and amounted to 21 425.6 Million BGN (Annex, Tables 1 and 2). The largest amounts were reported for the goods imported from the Russian Federation, Turkey, China, Serbia and Egypt whose share amounted to 66.5% of the total imports from non EU countries.

<sup>1</sup> Value changes at current prices.



**Figure 6. Nominal value<sup>1</sup> change of imports to non EU countries  
 in the period 2016 - 2017  
 (Compared to the same month of the previous year)**



**Foreign trade balance** of Bulgaria (export FOB - import CIF) with **third countries** in 2017 was negative and amounted to 1 373.7 Million BGN(Annex, Table 1).

<sup>1</sup> Value changes at current prices.

Annex

Table 1

Exports, imports and trade balance of Bulgaria in 2016 and 2017 by months  
Final data

(Million BGN)

Months/Periods	Exports - FOB			Imports - CIF			Imports - FOB <sup>1</sup>			Trade balance - FOB/CIF			Trade balance - FOB/FOB <sup>1</sup>		
	Total	EU	Non-EU	Total	EU	Non-EU	Total	EU	Non-EU	Total	EU	Non-EU	Total	EU	Non-EU
I.2016	3411.3	2261.2	1150.1	3501.5	2267.8	1233.7	3271.4	2121.9	1149.5	-90.2	-6.6	-83.6	139.9	139.3	0.6
II.2016	3471.9	2286.8	1185.1	3850.2	2601.3	1248.9	3613.4	2453.9	1159.5	-378.3	-314.5	-63.8	-141.5	-167.1	25.6
III.2016	3665.4	2507.8	1157.6	4237.1	3005.8	1231.3	3971.8	2825.6	1146.2	-571.7	-498.0	-73.7	-306.4	-317.8	11.4
<b>I - III.2016</b>	<b>10548.6</b>	<b>7055.8</b>	<b>3492.8</b>	<b>11588.8</b>	<b>7874.9</b>	<b>3713.9</b>	<b>10856.6</b>	<b>7401.4</b>	<b>3455.2</b>	<b>-1040.2</b>	<b>-819.1</b>	<b>-221.1</b>	<b>-308.0</b>	<b>-345.6</b>	<b>37.6</b>
IV.2016	3744.0	2537.4	1206.6	4021.8	2694.4	1327.4	3782.7	2547.3	1235.4	-277.8	-157.0	-120.8	-38.7	-9.9	-28.8
V.2016	3618.9	2397.6	1221.3	4096.9	2629.0	1467.9	3844.0	2481.4	1362.6	-478.0	-231.4	-246.6	-225.1	-83.8	-141.3
VI.2016	4068.4	2695.3	1373.1	4318.7	2902.4	1416.3	4050.8	2733.3	1317.5	-250.3	-207.1	-43.2	17.6	-38.0	55.6
<b>IV - VI.2016</b>	<b>11431.3</b>	<b>7630.3</b>	<b>3801.0</b>	<b>12437.4</b>	<b>8225.8</b>	<b>4211.6</b>	<b>11677.5</b>	<b>7762.0</b>	<b>3915.5</b>	<b>-1006.1</b>	<b>-595.5</b>	<b>-410.6</b>	<b>-246.2</b>	<b>-131.7</b>	<b>-114.5</b>
<b>I - VI.2016</b>	<b>21979.9</b>	<b>14686.1</b>	<b>7293.8</b>	<b>24026.2</b>	<b>16100.7</b>	<b>7925.5</b>	<b>22534.1</b>	<b>15163.4</b>	<b>7370.7</b>	<b>-2046.3</b>	<b>-1414.6</b>	<b>-631.7</b>	<b>-554.2</b>	<b>-477.3</b>	<b>-76.9</b>
VII.2016	4192.5	2821.3	1371.2	4344.2	2924.1	1420.1	4062.8	2746.7	1316.1	-151.7	-102.8	-48.9	129.7	74.6	55.1
VIII.2016	4024.8	2679.7	1345.1	4442.1	2787.3	1654.8	4140.6	2613.3	1527.3	-417.3	-107.6	-309.7	-115.8	66.4	-182.2
IX.2016	4170.7	2843.7	1327.0	4180.3	2742.0	1438.3	3917.9	2587.1	1330.8	-9.6	101.7	-111.3	252.8	256.6	-3.8
<b>VII - IX.2016</b>	<b>12388.0</b>	<b>8344.7</b>	<b>4043.3</b>	<b>12966.6</b>	<b>8453.4</b>	<b>4513.2</b>	<b>12121.3</b>	<b>7947.1</b>	<b>4174.2</b>	<b>-578.6</b>	<b>-108.7</b>	<b>-469.9</b>	<b>266.7</b>	<b>397.6</b>	<b>-130.9</b>
<b>I - IX.2016</b>	<b>34367.9</b>	<b>23030.8</b>	<b>11337.1</b>	<b>36992.8</b>	<b>24554.1</b>	<b>12438.7</b>	<b>34655.4</b>	<b>23110.5</b>	<b>11544.9</b>	<b>-2624.9</b>	<b>-1523.3</b>	<b>-1101.6</b>	<b>-287.5</b>	<b>-79.7</b>	<b>-207.8</b>
X.2016	4303.9	2901.8	1402.1	4831.3	3252.1	1579.2	4517.7	3042.3	1475.4	-527.4	-350.3	-177.1	-213.8	-140.5	-73.3
XI.2016	4370.5	2783.9	1586.6	4737.6	3117.7	1619.9	4439.2	2937.4	1501.8	-367.1	-333.8	-33.3	-68.7	-153.5	84.8
XII.2016	4144.0	2441.1	1702.9	4644.5	3065.4	1579.1	4356.7	2882.3	1474.4	-500.5	-624.3	123.8	-212.7	-441.2	228.5
<b>X - XII.2016</b>	<b>12818.4</b>	<b>8126.8</b>	<b>4691.6</b>	<b>14213.4</b>	<b>9435.2</b>	<b>4778.2</b>	<b>13313.6</b>	<b>8862.0</b>	<b>4451.6</b>	<b>-1395.0</b>	<b>-1308.4</b>	<b>-86.6</b>	<b>-495.2</b>	<b>-735.2</b>	<b>240.0</b>
<b>I - XII.2016</b>	<b>47186.3</b>	<b>31157.6</b>	<b>16028.7</b>	<b>51206.2</b>	<b>33989.3</b>	<b>17216.9</b>	<b>47969.0</b>	<b>31972.5</b>	<b>15996.5</b>	<b>-4019.9</b>	<b>-2831.7</b>	<b>-1188.2</b>	<b>-782.7</b>	<b>-814.9</b>	<b>32.2</b>

<sup>1</sup> By data of BNB for the transport costs.

Table 1

**Exports, imports and trade balance of Bulgaria in 2016 and 2017 by months**  
**Final data**

(Continued and end)

(Million BGN)

Months/Periods	Exports - FOB			Imports - CIF			Imports - FOB <sup>1</sup>			Trade balance - FOB/CIF			Trade balance - FOB/FOB <sup>1</sup>		
	Total	EU	Non-EU	Total	EU	Non-EU	Total	EU	Non-EU	Total	EU	Non-EU	Total	EU	Non-EU
I.2017	3884.4	2438.2	1446.2	4233.0	2651.9	1581.1	3922.8	2472.7	1450.1	-348.6	-213.7	-134.9	-38.4	-34.5	-3.9
II.2017	4179.1	2524.3	1654.8	4430.9	2820.4	1610.5	4112.3	2641.9	1470.4	-251.8	-296.1	44.3	66.8	-117.6	184.4
III.2017	4728.8	2973.3	1755.5	5309.2	3328.8	1980.4	4960.0	3131.1	1828.9	-580.4	-355.5	-224.9	-231.2	-157.8	-73.4
<b>I - III.2017</b>	<b>12792.3</b>	<b>7935.8</b>	<b>4856.5</b>	<b>13973.1</b>	<b>8801.1</b>	<b>5172.0</b>	<b>12995.1</b>	<b>8245.7</b>	<b>4749.4</b>	<b>-1180.8</b>	<b>-865.3</b>	<b>-315.5</b>	<b>-202.8</b>	<b>-309.9</b>	<b>107.1</b>
IV.2017	4029.9	2496.3	1533.6	4675.3	2977.4	1697.9	4358.0	2784.0	1574.0	-645.4	-481.1	-164.3	-328.1	-287.7	-40.4
V.2017	4587.8	2867.9	1719.9	4956.9	3162.9	1794.0	4621.6	2969.1	1652.5	-369.1	-295.0	-74.1	-33.8	-101.2	67.4
VI.2017	4785.6	3061.9	1723.7	4915.3	3131.1	1784.2	4584.8	2942.0	1642.8	-129.7	-69.2	-60.5	200.8	119.9	80.9
<b>IV - VI.2017</b>	<b>13403.3</b>	<b>8426.1</b>	<b>4977.2</b>	<b>14547.5</b>	<b>9271.4</b>	<b>5276.1</b>	<b>13564.4</b>	<b>8695.1</b>	<b>4869.3</b>	<b>-1144.2</b>	<b>-845.3</b>	<b>-298.9</b>	<b>-161.1</b>	<b>-269.0</b>	<b>107.9</b>
<b>I - VI.2017</b>	<b>26195.6</b>	<b>16361.9</b>	<b>9833.7</b>	<b>28520.6</b>	<b>18072.5</b>	<b>10448.1</b>	<b>26559.5</b>	<b>16940.8</b>	<b>9618.7</b>	<b>-2325.0</b>	<b>-1710.6</b>	<b>-614.4</b>	<b>-363.9</b>	<b>-578.9</b>	<b>215.0</b>
VII.2017	4831.1	3135.4	1695.7	4732.6	3010.1	1722.5	4419.4	2828.8	1590.6	98.5	125.3	-26.8	411.7	306.6	105.1
VIII.2017	4586.3	2925.5	1660.8	4978.2	3174.3	1803.9	4598.8	2938.7	1660.1	-391.9	-248.8	-143.1	-12.5	-13.2	0.7
IX.2017	4768.4	3151.1	1617.3	4716.9	3095.2	1621.7	4387.1	2910.4	1476.7	51.5	55.9	-4.4	381.3	240.7	140.6
<b>VII - IX.2017</b>	<b>14185.8</b>	<b>9212.0</b>	<b>4973.8</b>	<b>14427.7</b>	<b>9279.6</b>	<b>5148.1</b>	<b>13405.3</b>	<b>8677.9</b>	<b>4727.4</b>	<b>-241.9</b>	<b>-67.6</b>	<b>-174.3</b>	<b>780.5</b>	<b>534.1</b>	<b>246.4</b>
<b>I - IX.2017</b>	<b>40381.4</b>	<b>25573.9</b>	<b>14807.5</b>	<b>42948.3</b>	<b>27352.1</b>	<b>15596.2</b>	<b>39964.8</b>	<b>25618.7</b>	<b>14346.1</b>	<b>-2566.9</b>	<b>-1778.2</b>	<b>-788.7</b>	<b>416.6</b>	<b>-44.8</b>	<b>461.4</b>
X.2017	5005.2	3238.9	1766.3	5457.6	3563.8	1893.8	5064.6	3330.3	1734.3	-452.4	-324.9	-127.5	-59.4	-91.4	32.0
XI.2017	4953.1	3218.6	1734.5	5489.6	3608.5	1881.1	5114.1	3376.4	1737.7	-536.5	-389.9	-146.6	-161.0	-157.8	-3.2
XII.2017	4258.8	2515.2	1743.6	5337.9	3283.4	2054.5	4956.6	3066.2	1890.4	-1079.1	-768.2	-310.9	-697.8	-551.0	-146.8
<b>X - XII.2017</b>	<b>14217.1</b>	<b>8972.7</b>	<b>5244.4</b>	<b>16285.1</b>	<b>10455.7</b>	<b>5829.4</b>	<b>15135.3</b>	<b>9772.9</b>	<b>5362.4</b>	<b>-2068.0</b>	<b>-1483.0</b>	<b>-585.0</b>	<b>-918.2</b>	<b>-800.2</b>	<b>-118.0</b>
<b>I - XII.2017</b>	<b>54598.5</b>	<b>34546.6</b>	<b>20051.9</b>	<b>59233.4</b>	<b>37807.8</b>	<b>21425.6</b>	<b>55100.1</b>	<b>35391.6</b>	<b>19708.5</b>	<b>-4634.9</b>	<b>-3261.2</b>	<b>-1373.7</b>	<b>-501.6</b>	<b>-845.0</b>	<b>343.4</b>

<sup>1</sup> By data of BNB for the transport costs.





**Table 2**

**Value changes of exports and imports of Bulgaria in 2017 compared to the same period of the previous year**

(Per cent)

Months/Periods	Exports - FOB			Imports - CIF			Imports - FOB		
	Total	EU	Non-EU	Total	EU	Non-EU	Total	EU	Non-EU
I	13.9	7.8	25.7	20.9	16.9	28.2	19.9	16.5	26.2
II	20.4	10.4	39.6	15.1	8.4	29.0	13.8	7.7	26.8
III	29.0	18.6	51.6	25.3	10.7	60.8	24.9	10.8	59.6
<b>I - III</b>	<b>21.3</b>	<b>12.5</b>	<b>39.0</b>	<b>20.6</b>	<b>11.8</b>	<b>39.3</b>	<b>19.7</b>	<b>11.4</b>	<b>37.5</b>
IV	7.6	-1.6	27.1	16.2	10.5	27.9	15.2	9.3	27.4
V	26.8	19.6	40.8	21.0	20.3	22.2	20.2	19.7	21.3
VI	17.6	13.6	25.5	13.8	7.9	26.0	13.2	7.6	24.7
<b>IV - VI</b>	<b>17.3</b>	<b>10.4</b>	<b>30.9</b>	<b>17.0</b>	<b>12.7</b>	<b>25.3</b>	<b>16.2</b>	<b>12.0</b>	<b>24.4</b>
<b>I - VI</b>	<b>19.2</b>	<b>11.4</b>	<b>34.8</b>	<b>18.7</b>	<b>12.2</b>	<b>31.8</b>	<b>17.9</b>	<b>11.7</b>	<b>30.5</b>
VII	15.2	11.1	23.7	8.9	2.9	21.3	8.8	3.0	20.9
VIII	14.0	9.2	23.5	12.1	13.9	9.0	11.1	12.5	8.7
IX	14.3	10.8	21.9	12.8	12.9	12.8	12.0	12.5	11.0
<b>VII - IX</b>	<b>14.5</b>	<b>10.4</b>	<b>23.0</b>	<b>11.3</b>	<b>9.8</b>	<b>14.1</b>	<b>10.6</b>	<b>9.2</b>	<b>13.3</b>
<b>I - IX</b>	<b>17.5</b>	<b>11.0</b>	<b>30.6</b>	<b>16.1</b>	<b>11.4</b>	<b>25.4</b>	<b>15.3</b>	<b>10.9</b>	<b>24.3</b>
X	16.3	11.6	26.0	13.0	9.6	19.9	12.1	9.5	17.5
XI	13.3	15.6	9.3	15.9	15.7	16.1	15.2	14.9	15.7
XII	2.8	3.0	2.4	14.9	7.1	30.1	13.8	6.4	28.2
<b>X - XII</b>	<b>10.9</b>	<b>10.4</b>	<b>11.8</b>	<b>14.6</b>	<b>10.8</b>	<b>22.0</b>	<b>13.7</b>	<b>10.3</b>	<b>20.5</b>
<b>I - XII</b>	<b>15.7</b>	<b>10.9</b>	<b>25.1</b>	<b>15.7</b>	<b>11.2</b>	<b>24.4</b>	<b>14.9</b>	<b>10.7</b>	<b>23.2</b>

Table 3

**Exports, imports and trade balance by groups of countries and main partner countries<sup>1</sup> of Bulgaria in 2016 and 2017**

Countries and groups of countries	Exports - FOB			Imports - CIF			Trade balance - FOB/CIF	
	2016	2017	Change compared to the same period of the previous year - %	2016	2017	Change compared to the same period of the previous year - %	2016	2017
	Million BGN			Million BGN			Million BGN	
<b>Total</b>	<b>47186.3</b>	<b>54598.5</b>	<b>15.7</b>	<b>51206.2</b>	<b>59233.4</b>	<b>15.7</b>	<b>-4019.9</b>	<b>-4634.9</b>
<b>EU</b>	<b>31157.6</b>	<b>34546.6</b>	<b>10.9</b>	<b>33989.3</b>	<b>37807.8</b>	<b>11.2</b>	<b>-2831.7</b>	<b>-3261.2</b>
Austria	898.7	961.3	7.0	1412.3	1426.1	1.0	-513.6	-464.8
Belgium	1264.5	2195.1	73.6	1188.4	1248.1	5.0	76.1	947.0
Croatia	218.7	223.3	2.1	123.0	155.5	26.4	95.7	67.8
Cyprus	160.4	157.3	-1.9	57.9	243.4	320.4	102.5	-86.1
Czech Republic	787.2	1069.1	35.8	1086.9	1335.5	22.9	-299.7	-266.4
Denmark	283.3	315.0	11.2	233.9	271.4	16.0	49.4	43.6
Estonia	42.7	47.3	10.8	32.3	58.9	82.4	10.4	-11.6
Finland	80.8	86.8	7.4	132.1	125.1	-5.3	-51.3	-38.3
France	2079.8	2137.1	2.8	1611.8	1705.4	5.8	468.0	431.7
Germany	6291.2	7023.1	11.6	6694.1	7243.7	8.2	-402.9	-220.6
Greece	3228.4	3362.5	4.2	2462.4	2605.9	5.8	766.0	756.6
Hungary	764.6	902.6	18.0	1948.9	2085.1	7.0	-1184.3	-1182.5
Ireland	66.3	90.8	37.0	192.1	223.7	16.4	-125.8	-132.9
Italy	4245.3	4326.8	1.9	4049.5	4290.1	5.9	195.8	36.7
Latvia	53.5	58.1	8.6	69.2	70.1	1.3	-15.7	-12.0
Lithuania	111.9	139.6	24.8	99.4	89.4	-10.1	12.5	50.2
Luxembourg	12.0	18.2	51.7	170.8	180.5	5.7	-158.8	-162.3
Malta	73.2	36.6	-50.0	33.5	74.7	123.0	39.7	-38.1
Netherlands	1248.0	1293.4	3.6	1868.3	2174.0	16.4	-620.3	-880.6
Poland	1145.7	1231.7	7.5	2066.2	2136.8	3.4	-920.5	-905.1
Portugal	200.6	230.2	14.8	93.3	103.1	10.5	107.3	127.1
Romania	4048.3	4261.9	5.3	3548.7	4174.7	17.6	499.6	87.2
Slovakia	321.9	404.9	25.8	686.5	762.6	11.1	-364.6	-357.7
Slovenia	386.6	404.0	4.5	396.2	432.0	9.0	-9.6	-28.0
Spain	1295.7	1533.8	18.4	2031.1	3117.8	53.5	-735.4	-1584.0
Sweden	355.4	426.8	20.1	322.8	378.7	17.3	32.6	48.1
United Kingdom	1156.2	1272.7	10.1	1174.1	930.1	-20.8	-17.9	342.6
Not specified	336.7	336.6	0.0	203.6	165.4	-18.8	133.1	171.2

<sup>1</sup> Partner country:

- In case of exports (or dispatches) is the country (or Member State) of final destination of the goods.
- In case of imports (or arrivals) is the country (or Member State) of consignment of the goods.



Table 3

**Exports, imports and trade balance by groups of countries and main partner countries<sup>1</sup> of Bulgaria in 2016 and 2017**

(Continued)

Countries and groups of countries	Exports - FOB			Imports - CIF			Trade balance - FOB/CIF	
	2016	2017	Change compared to the same period of the previous year - %	2016	2017	Change compared to the same period of the previous year - %	2016	2017
	Million BGN			Million BGN			Million BGN	
<b>Non EU countries</b>	<b>16028.7</b>	<b>20051.9</b>	<b>25.1</b>	<b>17216.9</b>	<b>21425.6</b>	<b>24.4</b>	<b>-1188.2</b>	<b>-1373.7</b>
<b>CIS<sup>2</sup></b>	<b>1334.7</b>	<b>2119.7</b>	<b>58.8</b>	<b>5610.4</b>	<b>7205.2</b>	<b>28.4</b>	<b>-4275.7</b>	<b>-5085.5</b>
of which:								
Kazakhstan	36.9	49.2	33.3	33.6	27.3	-18.8	3.3	21.9
Russian Federation	765.3	1448.9	89.3	4570.0	6068.2	32.8	-3804.7	-4619.3
Ukraine	278.5	294.4	5.7	801.5	896.4	11.8	-523.0	-602.0
<b>OECD<sup>3</sup></b>	<b>5378.2</b>	<b>6741.4</b>	<b>25.3</b>	<b>4774.8</b>	<b>5410.0</b>	<b>13.3</b>	<b>603.4</b>	<b>1331.4</b>
of which:								
Canada	96.0	102.1	6.4	94.3	128.3	36.1	1.7	-26.2
Israel	172.7	212.9	23.3	99.0	99.6	0.6	73.7	113.3
Japan	80.0	81.8	2.3	186.0	205.9	10.7	-106.0	-124.1
Korea, Republic of	160.8	115.4	-28.2	218.1	222.2	1.9	-57.3	-106.8
Turkey	3694.9	4853.3	31.4	3179.5	3733.9	17.4	515.4	1119.4
United States	693.5	797.6	15.0	408.3	454.4	11.3	285.2	343.2
<b>EFTA<sup>4</sup></b>	<b>338.0</b>	<b>404.5</b>	<b>19.7</b>	<b>433.0</b>	<b>477.4</b>	<b>10.3</b>	<b>-95.0</b>	<b>-72.9</b>
of which:								
Norway	68.7	78.7	14.6	45.3	60.0	32.5	23.4	18.7
Switzerland	266.5	322.8	21.1	384.2	414.4	7.9	-117.7	-91.6

<sup>1</sup> Partner country:

- In case of exports (or dispatches) is the country (or Member State) of final destination of the goods.

- In case of imports (or arrivals) is the country (or Member State) of consignment of the goods.

<sup>2</sup> CIS includes: Azerbaijan; Armenia; Belarus; Kazakhstan; Kyrgyz Republic; Moldova, Republic of; Russian Federation; Tajikistan; Turkmenistan; Uzbekistan and Ukraine.

<sup>3</sup> OECD includes: Australia; Virgin Islands (US); United States; Iceland; Canada; Mexico; New Zealand; Norway; Korea, Republic of; Turkey; Switzerland; Japan; Israel and Chile.

<sup>4</sup> EFTA includes: Norway; Switzerland; Iceland and Liechtenstein.

Table 3

**Exports, imports and trade balance by groups of countries and main partner countries<sup>1</sup> of Bulgaria in 2016 and 2017**

(Continued and end)

Countries and groups of countries	Exports - FOB			Imports - CIF			Trade balance - FOB/CIF	
	2016	2017	Change compared to the same period of the previous year - %	2016	2017	Change compared to the same period of the previous year - %	2016	2017
	Million BGN			Million BGN			Million BGN	
<b>Countries not included in the upper groups</b>								
Albania	127.2	155.7	22.4	31.1	35.5	14.1	96.1	120.2
Bosnia and Herzegovina	130.4	136.0	4.3	84.9	77.5	-8.7	45.5	58.5
Brazil	50.7	55.8	10.1	50.2	38.1	-24.1	0.5	17.7
China	914.5	1329.0	45.3	2034.9	2171.2	6.7	-1120.4	-842.2
Egypt	567.2	927.6	63.5	709.7	1098.8	54.8	-142.5	-171.2
Former Yugoslav Republic of Macedonia	769.1	796.3	3.5	505.2	641.7	27.0	263.9	154.6
Georgia	323.1	351.5	8.8	280.7	585.5	108.6	42.4	-234.0
India	202.7	211.3	4.2	238.9	273.9	14.7	-36.2	-62.6
Indonesia	67.0	55.1	-17.8	71.8	92.9	29.4	-4.8	-37.8
Iran, Islamic Republic of	134.0	118.9	-11.3	49.1	105.2	114.3	84.9	13.7
Peru	15.6	30.5	95.5	47.3	47.8	1.1	-31.7	-17.3
Serbia	743.4	927.2	24.7	761.7	1183.4	55.4	-18.3	-256.2
Singapore	355.8	471.6	32.5	54.8	68.8	25.5	301.0	402.8
South Africa	134.8	126.8	-5.9	35.7	59.1	65.5	99.1	67.7
Syrian Arab Republic	35.7	39.8	11.5	1.7	0.6	-64.7	34.0	39.2
Taiwan	50.2	62.6	24.7	219.7	197.8	-10.0	-169.5	-135.2
United Arab Emirates	457.4	321.5	-29.7	41.6	53.5	28.6	415.8	268.0
Viet Nam	175.6	59.9	-65.9	80.6	85.3	5.8	95.0	-25.4

<sup>1</sup> Partner country:

- In case of exports (or dispatches) is the country (or Member State) of final destination of the goods.
- In case of imports (or arrivals) is the country (or Member State) of consignment of the goods.



**Table 4**  
**Exports, imports and trade balance of Bulgaria by sections of SITC, rev.4 in 2016 and 2017**

Sections by SITC	Exports - FOB			Imports - CIF			Trade balance - FOB/CIF	
	2016	2017	Change compared to the same period of the previous year - %	2016	2017	Change compared to the same period of the previous year - %	2016	2017
	Million BGN			Million BGN			Million BGN	
<b>Total</b>	<b>47186.3</b>	<b>54598.5</b>	<b>15.7</b>	<b>51206.2</b>	<b>59233.4</b>	<b>15.7</b>	<b>-4019.9</b>	<b>-4634.9</b>
<b>of which EU</b>	<b>31157.6</b>	<b>34546.6</b>	<b>10.9</b>	<b>33989.3</b>	<b>37807.8</b>	<b>11.2</b>	<b>-2831.7</b>	<b>-3261.2</b>
Food and live animals	5399.5	5612.7	3.9	4149.8	4616.9	11.3	1249.7	995.8
of which EU	3746.5	4132.1	10.3	3315.4	3781.6	14.1	431.1	350.5
Beverages and tobacco	810.9	720.9	-11.1	786.2	807.6	2.7	24.7	-86.7
of which EU	368.8	314.4	-14.8	640.4	643.3	0.5	-271.6	-328.9
Crude materials, inedible (except fuel)	3134.3	3347.7	6.8	3696.8	5386.3	45.7	-562.5	-2038.6
of which EU	2108.6	2160.3	2.5	2129.6	3112.2	46.1	-21.0	-951.9
Mineral fuel, lubricants and related materials	4275.4	5415.0	26.7	6377.6	8393.6	31.6	-2102.2	-2978.6
of which EU	1195.5	1373.6	14.9	1340.2	1796.4	34.0	-144.7	-422.8
Animals and vegetable oils, fats and waxes	483.4	585.7	21.2	181.7	194.3	6.9	301.7	391.4
of which EU	314.3	409.4	30.3	132.2	124.8	-5.6	182.1	284.6
Chemical and related products n.e.c.	4732.5	5420.7	14.5	7609.5	8411.1	10.5	-2877.0	-2990.4
of which EU	3140.5	3401.2	8.3	6005.4	6573.9	9.5	-2864.9	-3172.7
Manufactured goods classified chiefly by material	9595.8	12792.7	33.3	9177.5	10100.3	10.1	418.3	2692.4
of which EU	6617.5	8213.5	24.1	5826.8	5866.0	0.7	790.7	2347.5
Machinery and transport equipment	10163.4	11443.0	12.6	14319.5	15999.4	11.7	-4156.1	-4556.4
of which EU	7383.9	8291.3	12.3	11102.6	12138.8	9.3	-3718.7	-3847.5
Miscellaneous manufactured articles	8466.4	9113.2	7.6	4608.4	5007.0	8.6	3858.0	4106.2
of which EU	6195.4	6137.4	-0.9	3243.3	3488.8	7.6	2952.1	2648.6
Commodities and transactions n.e.c.	124.7	146.9	17.8	299.2	316.9	5.9	-174.5	-170.0
of which EU	86.6	113.4	30.9	253.4	282.0	11.3	-166.8	-168.6