

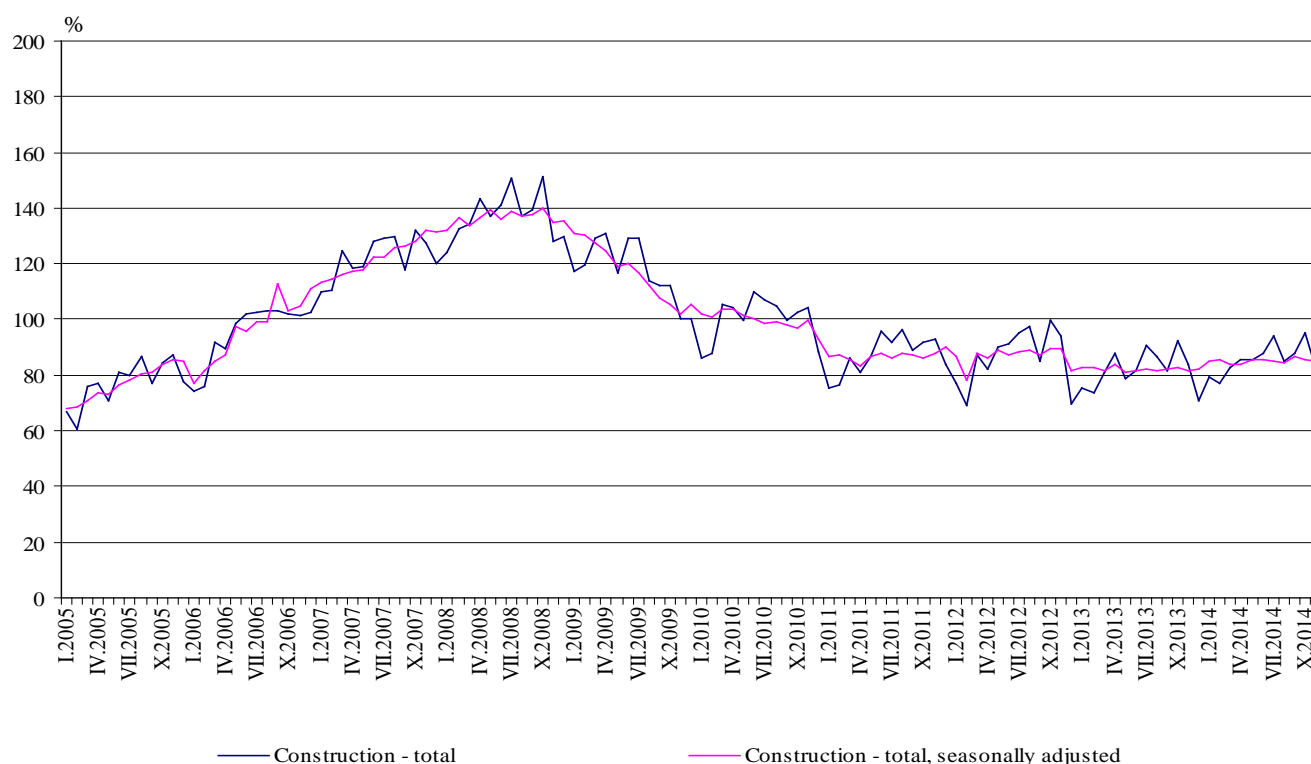


## CONSTRUCTION PRODUCTION INDICES<sup>1</sup> IN NOVEMBER 2014<sup>2</sup>

According to the preliminary data, in November 2014 the index of production in section 'Construction', calculated on the base of seasonally adjusted data<sup>3</sup>, was 0.5% below the level of the previous month (Table 2).

In November 2014 working day adjusted data<sup>4</sup> showed an increase by 1.4% in the construction production, compared to the same month of 2013 (Table 4).

**Figure 1. Construction Production Indices (2010 = 100)**



<sup>1</sup> Data for November 2014 are preliminary.

<sup>2</sup> The monthly indices show the short-term changes in the construction production between two comparable periods. This information can be used to analyze the current state of the construction activity in the country, as well as short-term forecast for its future development. The indices are calculated on the base of information on hours worked in the construction. The data are collected with monthly sample survey, which includes construction enterprises, which production exceeds 75% of the total production in construction. Construction Production Indices are calculated on the base 2010 = 100.

<sup>3</sup> Seasonal adjustment is a statistical method which eliminates the seasonal component of time series.

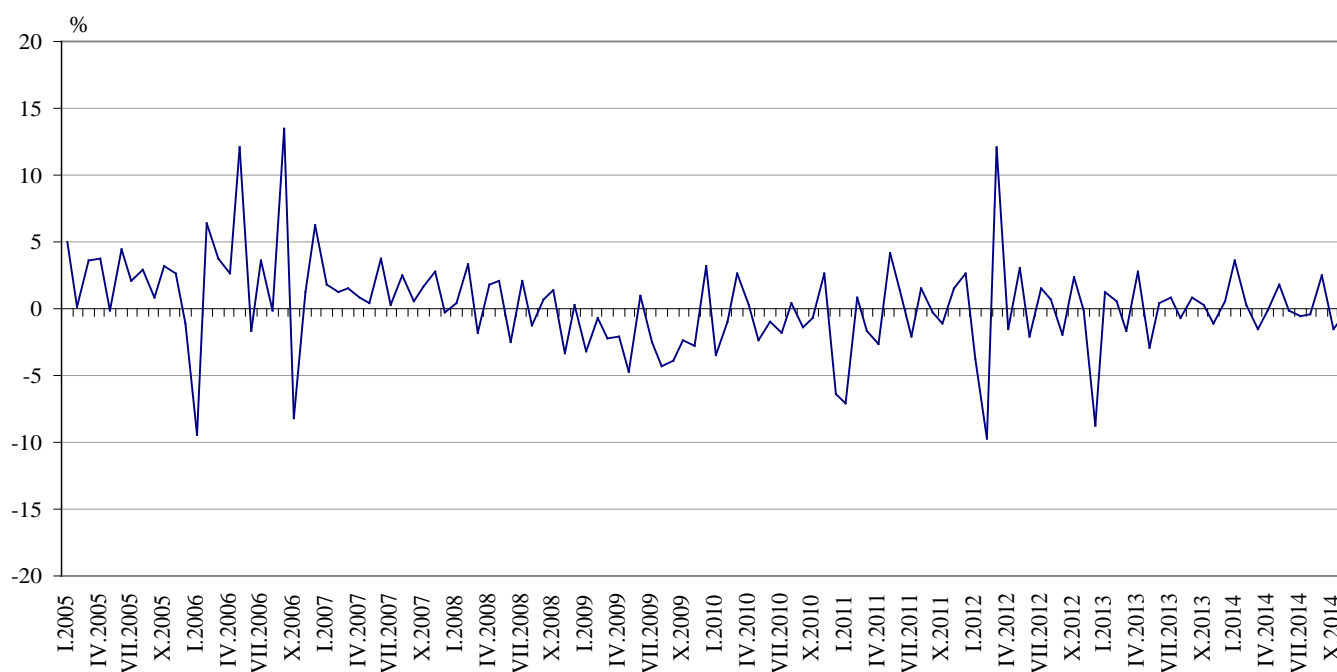
<sup>4</sup> Working day adjustment is an adjustment for variations in monthly data, caused by calendar effects, different number of calendar and working days in the months, national holidays and outliers (for example the presence of more non-working days in May could contribute to the decline in the production in some activities).



## Monthly changes

In November 2014 the construction production, calculated from the seasonally adjusted data, was below the level of the previous month. Index of production of building construction decreased by 0.6% and the production of civil engineering - by 0.4% (Table 2).

**Figure 2. Change of the indices of the construction production compared to the previous month (Seasonally adjusted, 2010 = 100)**



### 1. Construction Production Indices (Seasonally adjusted, 2010 = 100)

	2013		2014										
	XI	XII	I	II	III	IV	V	VI	VII	VIII	IX	X	XI
<b>Construction - total</b>	81.6	82.1	85.1	85.4	84.1	84.0	85.5	85.5	85.0	84.6	86.7	85.3	84.8
Building construction	84.0	84.2	84.8	83.7	82.4	82.7	84.1	83.3	81.8	81.5	82.6	81.4	80.9
Civil engineering	78.8	79.6	85.6	87.5	86.2	85.7	87.3	88.2	88.8	88.4	91.7	90.1	89.8



## 2. Changes of the Construction Production Indices compared to the previous month<sup>1</sup>

(Per cent)

	2013		2014										
	XI	XII	I	II	III	IV	V	VI	VII	VIII	IX	X	XI
<b>Construction - total</b>	-1.2	0.6	3.7	0.3	-1.5	-0.1	1.8	-0.1	-0.6	-0.5	2.5	-1.6	-0.5
Building construction	-0.7	0.2	0.7	-1.2	-1.6	0.3	1.8	-1.0	-1.7	-0.5	1.4	-1.4	-0.6
Civil engineering	-1.8	1.1	7.5	2.2	-1.4	-0.7	1.9	1.0	0.7	-0.4	3.7	-1.8	-0.4

<sup>1</sup> Seasonally adjusted.

### Annual changes

On an annual basis in November 2014, the increase of production in construction, calculated from working day adjusted data, was determined mainly from the positive rate in the civil engineering by 10.0%, while in the building construction was registered a decrease by 5.1% (Table 4).

## 3. Construction Production Indices (Working day adjusted, 2010 = 100)

	2011	2012	2013		2014										
	XI	XI	XI	XII	I	II	III	IV	V	VI	VII	VIII	IX	X	XI
<b>Construction - total</b>	92.2	93.0	84.1	72.1	78.7	77.2	84.9	84.9	84.9	88.6	92.9	86.7	86.9	93.5	85.3
Building construction	96.5	92.2	86.6	72.6	79.4	76.9	84.4	83.5	82.7	85.2	89.4	83.3	83.7	89.9	82.2
Civil engineering	86.8	93.9	81.0	71.6	77.9	77.5	85.5	86.7	87.6	92.9	97.1	91.1	90.9	97.9	89.0



#### 4. Changes of the Construction Production Indices compared to the same month of the previous year<sup>1</sup>

(Per cent)

	2011	2012	2013		2014										
	XI	XI	XI	XII	I	II	III	IV	V	VI	VII	VIII	IX	X	XI
<b>Construction - total</b>	-10.7	0.9	-9.6	-0.2	5.0	4.6	4.8	-1.5	6.1	5.7	4.2	0.0	6.4	2.5	1.4
Building construction	-3.8	-4.4	-6.1	-3.5	-2.0	-3.7	-3.6	-8.4	-0.4	-1.6	-3.0	-7.7	-1.3	-3.5	-5.1
Civil engineering	-18.8	8.2	-13.8	4.4	15.3	17.0	17.4	8.4	15.0	15.4	13.8	10.4	16.7	10.3	10.0

<sup>1</sup>Working day adjusted.