

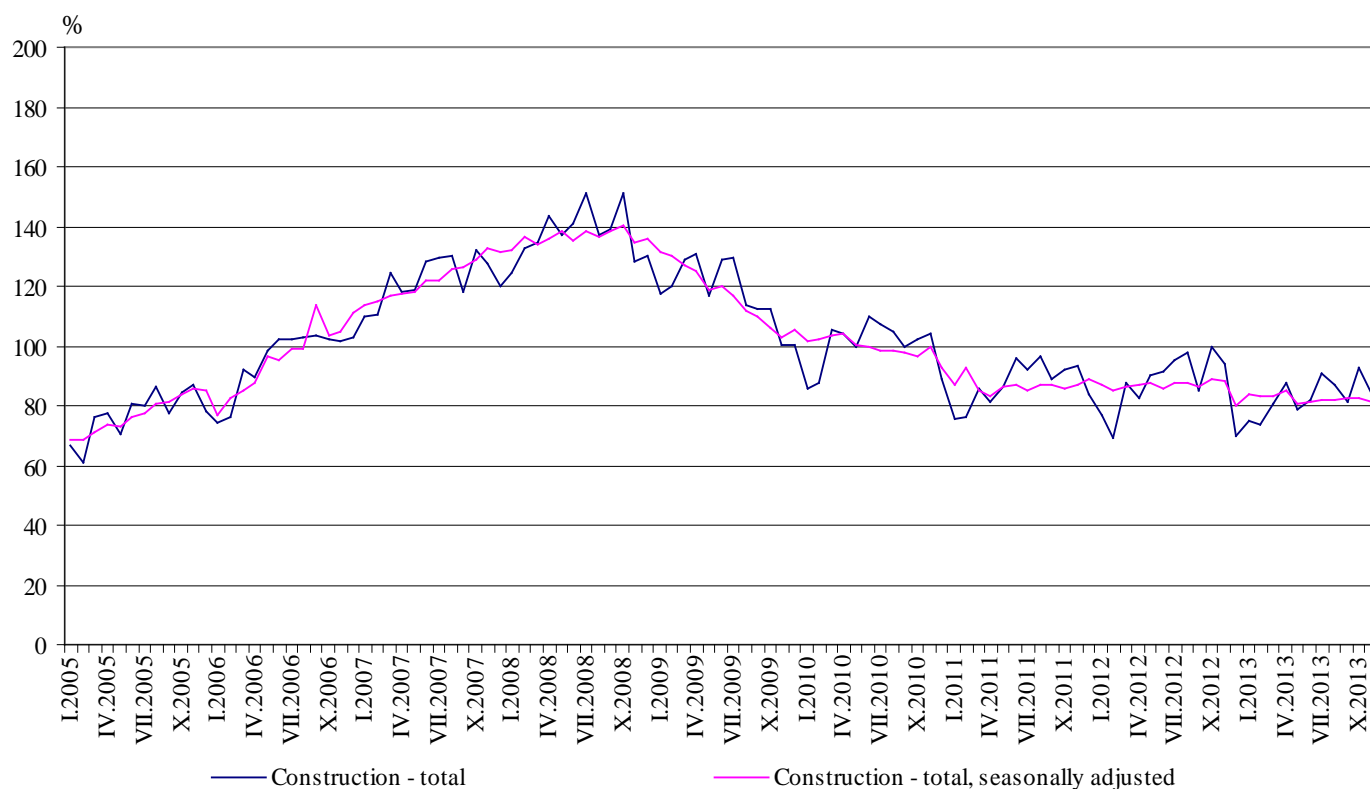


CONSTRUCTION PRODUCTION INDICES¹ IN NOVEMBER 2013²

According to the preliminary data, in November 2013, the index of production in section 'Construction', calculated on the base of seasonally adjusted data³, was 1.2% below the level of the previous month (Table 2).

In November 2013 working day adjusted data⁴ showed a decrease by 9.0% in the construction production, comparing to the same month of 2012 (Table 4).

Figure 1. Construction Production Indices (2010 = 100)



¹ Data for November 2013 are preliminary.

² The monthly indices show the short-term changes in the construction production between two comparable periods. This information can be used to analyze the current state of the construction activity in the country, as well as short-term forecast for its future development. The indices are calculated on the base of information on hours worked in the construction. The data are collected with monthly sample survey, which includes construction enterprises, which production exceeds 75% of the total production in construction. Construction Production Indices are calculated on the base 2010 = 100.

³ Seasonal adjustment is a statistical method, which eliminates the seasonal component of time series.

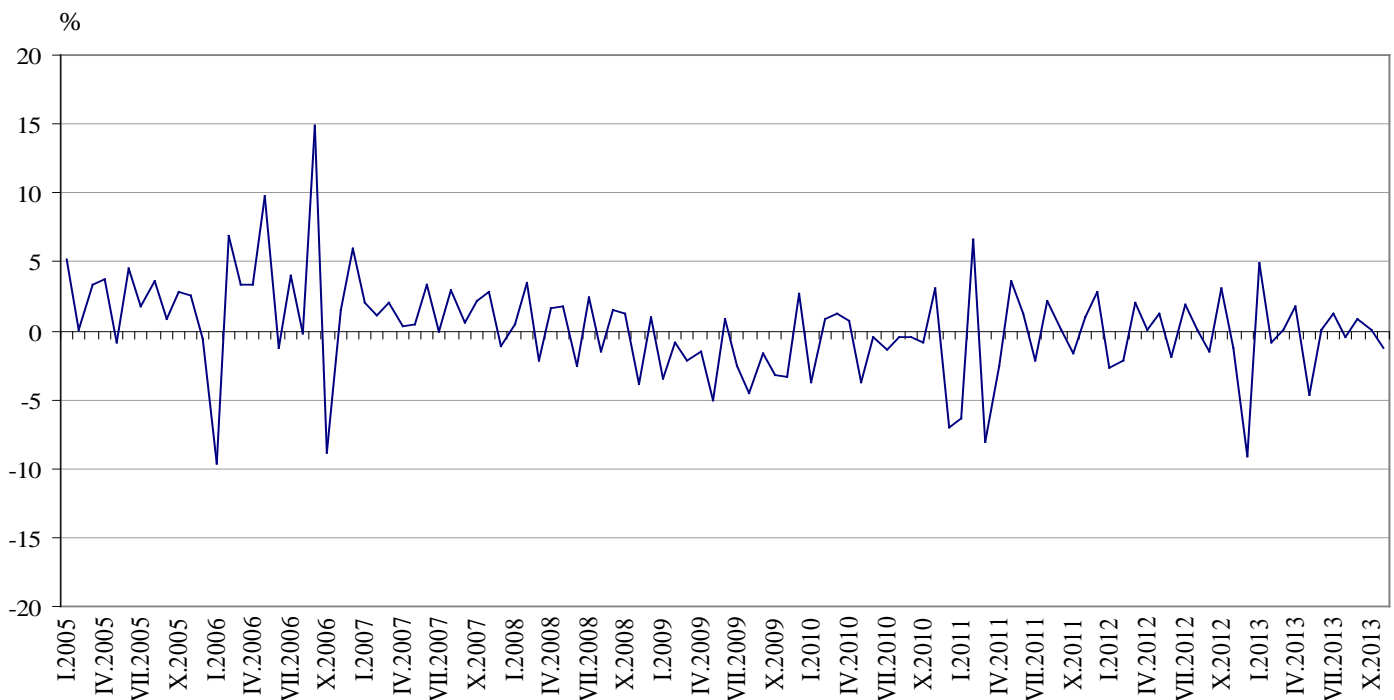
⁴ Working day adjustment is an adjustment for variations in monthly data, caused by calendar effects, different number of calendar and working days in the months, national holidays and outliers (for example the presence of more non-working days in May could contribute to the decline in the production in some activities).



Monthly changes

In November 2013 the construction production was below the level of the previous month. Index of production of civil engineering, calculated from the seasonally adjusted data, marked a decrease by 1.9% and the production of building construction - by 0.7% (Table 2).

Figure 2. Change of the indices of the construction production compared to the previous month (Seasonally adjusted, 2010 = 100)



1. Construction Production Indices (Seasonally adjusted, 2010 = 100)

	2012		2013										
	XI	XII	I	II	III	IV	V	VI	VII	VIII	IX	X	XI
Construction - total	88.0	80.0	83.9	83.2	83.3	84.8	80.9	81.0	82.0	81.7	82.4	82.5	81.5
Building construction	86.9	85.3	88.7	87.9	89.5	88.3	85.1	85.5	84.9	85.0	85.1	84.2	83.6
Civil engineering	89.4	73.4	77.9	77.3	75.6	80.4	75.6	75.5	78.4	77.6	79.1	80.4	78.9



2. Changes of the Construction Production Indices compared to the previous month¹

(Per cent)

	2012		2013										
	XI	XII	I	II	III	IV	V	VI	VII	VIII	IX	X	XI
Construction - total	-1.2	-9.1	4.9	-0.8	0.1	1.8	-4.6	0.1	1.2	-0.4	0.9	0.1	-1.2
Building construction	-0.7	-1.8	4.0	-0.9	1.8	-1.3	-3.6	0.5	-0.7	0.1	0.1	-1.1	-0.7
Civil engineering	-1.9	-17.9	6.1	-0.8	-2.2	6.3	-6.0	-0.1	3.8	-1.0	1.9	1.6	-1.9

¹ Seasonally adjusted.

Annual changes

On an annual basis in November 2013, the decrease of production in construction, calculated from working day adjusted data, was determined mainly from the negative rate in the civil engineering, as well as in the building construction, where was registered a drop by 12.9 and by 5.8% respectively (Table 4).

3. Construction Production Indices (Working day adjusted, 2010 = 100)

	2010	2011	2012		2013										
	XI	XI	XI	XII	I	II	III	IV	V	VI	VII	VIII	IX	X	XI
Construction - total	103.8	92.1	93.1	71.8	74.9	73.9	81.5	86.9	79.8	83.7	89.3	87.1	81.6	91.1	84.7
Building construction	100.9	96.3	92.4	74.9	80.9	79.9	87.8	91.3	82.8	86.3	92.2	90.4	84.6	93.1	87.0
Civil engineering	107.5	86.8	93.9	68.0	67.4	66.4	73.6	81.5	76.0	80.5	85.6	83.0	77.9	88.6	81.8



4. Changes of the Construction Production Indices compared to the same month of the previous year¹

(Per cent)

	2010	2011	2012		2013										
	XI	XI	XI	XII	I	II	III	IV	V	VI	VII	VIII	IX	X	XI
Construction - total	2.5	-11.3	1.1	-12.4	-2.2	8.0	-5.8	3.7	-11.0	-8.7	-6.8	-9.3	-5.4	-7.8	-9.0
Building construction	-11.3	-4.6	-4.0	-11.4	0.7	15.1	-1.6	6.4	-8.9	-6.4	-5.5	-7.0	-3.0	-5.3	-5.8
Civil engineering	25.4	-19.3	8.2	-13.9	-6.4	-1.2	-11.4	0.1	-13.9	-11.5	-8.5	-12.2	-8.6	-11.0	-12.9

¹ Working day adjusted.