

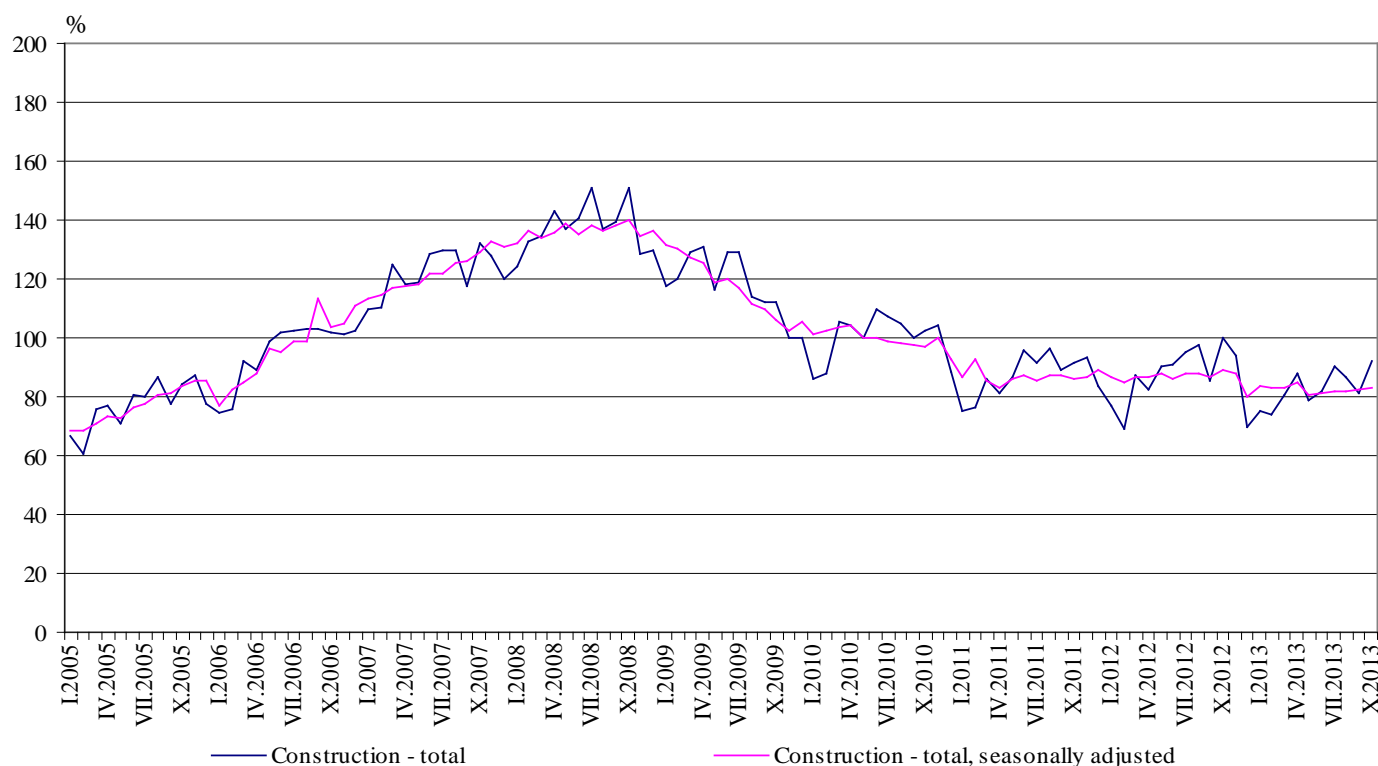


## CONSTRUCTION PRODUCTION INDICES<sup>1</sup> IN OCTOBER 2013<sup>2</sup>

According to the preliminary data, in October 2013, the index of production in section 'Construction', calculated on the base of seasonally adjusted data<sup>3</sup>, was 0.5% above the level of the previous month (Table 2).

In October 2013 working day adjusted data<sup>4</sup> showed a decrease by 7.8% in the construction production, compared to the same month of 2012 (Table 4).

**Figure 1. Construction Production Indices (2010 = 100)**



<sup>1</sup> Data for October 2013 are preliminary.

<sup>2</sup> The monthly indices show the short-term changes in the construction production between two comparable periods. This information can be used to analyze the current state of the construction activity in the country, as well as short-term forecast for its future development. The indices are calculated on the base of information on hours worked in the construction. The data are collected with monthly sample survey, which includes construction enterprises, which production exceeds 75% of the total production in construction. Construction Production Indices are calculated on the base 2010 = 100.

<sup>3</sup> Seasonal adjustment is a statistical method, which eliminates the seasonal component of time series.

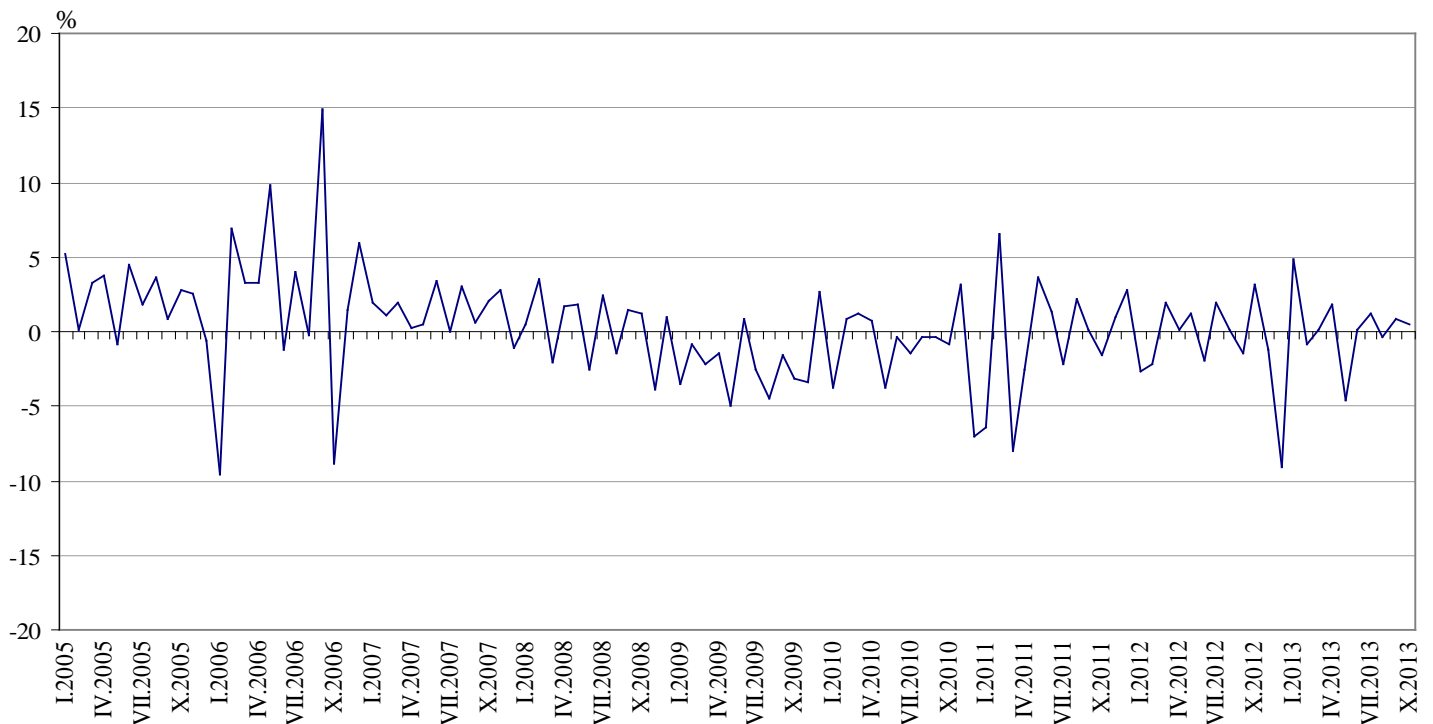
<sup>4</sup> Working day adjustment is an adjustment for variations in monthly data, caused by calendar effects, different number of calendar and working days in the months, national holidays and outliers (for example the presence of more non-working days in May could contribute to the decline in the production in some activities).



## Monthly changes

In October 2013 the construction production was above the level of the previous month. Index of production of civil engineering, calculated from the seasonally adjusted data, marked an increase by 2.1% while the production of building construction fell by 0.8% (Table 2).

**Figure 2. Change of the indices of the construction production compared to the previous month (Seasonally adjusted, 2010 = 100)**



### 1. Construction Production Indices (Seasonally adjusted, 2010 = 100)

	2012			2013									
	X	XI	XII	I	II	III	IV	V	VI	VII	VIII	IX	X
<b>Construction - total</b>	89.1	88.0	80.0	83.9	83.2	83.3	84.8	80.9	81.0	82.0	81.7	82.4	82.8
Building construction	87.5	86.9	85.3	88.7	87.9	89.5	88.3	85.1	85.5	84.9	85.0	85.1	84.4
Civil engineering	91.1	89.4	73.4	77.9	77.3	75.6	80.4	75.6	75.5	78.4	77.6	79.1	80.8



## 2. Changes of the Construction Production Indices compared to the previous month<sup>1</sup>

(Per cent)

	2012			2013									
	X	XI	XII	I	II	III	IV	V	VI	VII	VIII	IX	X
<b>Construction - total</b>	3.1	-1.2	-9.1	4.9	-0.8	0.1	1.8	-4.6	0.1	1.2	-0.4	0.9	0.5
Building construction	0.9	-0.7	-1.8	4.0	-0.9	1.8	-1.3	-3.6	0.5	-0.7	0.1	0.1	-0.8
Civil engineering	5.8	-1.9	-17.9	6.1	-0.8	-2.2	6.3	-6.0	-0.1	3.8	-1.0	1.9	2.1

<sup>1</sup> Seasonally adjusted.

### Annual changes

On an annual basis in October 2013, the decrease of production in construction, calculated from working day adjusted data, was determined mainly from the negative rate in the civil engineering, as well as in the building construction, where a decrease by 10.8 and by 5.4% was respectively registered (Table 4).

## 3. Construction Production Indices (Working day adjusted, 2010 = 100)

	2010	2011	2012			2013									
	X	X	X	XI	XII	I	II	III	IV	V	VI	VII	VIII	IX	X
<b>Construction - total</b>	103.8	93.8	98.8	93.1	71.8	74.9	73.9	81.5	86.9	79.8	83.7	89.3	87.1	81.6	91.1
Building construction	101.7	99.4	98.3	92.4	74.9	80.9	79.9	87.8	91.3	82.8	86.3	92.2	90.4	84.6	93.0
Civil engineering	106.4	86.8	99.5	93.9	68.0	67.4	66.4	73.6	81.5	76.0	80.5	85.6	83.0	77.9	88.8



#### 4. Changes of the Construction Production Indices compared to the same month of the previous year<sup>1</sup>

(Per cent)

	2010	2011	2012			2013									
	X	X	X	XI	XII	I	II	III	IV	V	VI	VII	VIII	IX	X
<b>Construction - total</b>	-7.5	-9.6	5.3	1.1	-12.4	-2.2	8.0	-5.8	3.7	-11.0	-8.7	-6.8	-9.3	-5.4	-7.8
Building construction	-21.1	-2.3	-1.1	-4.0	-11.4	0.7	15.1	-1.6	6.4	-8.9	-6.4	-5.5	-7.0	-3.0	-5.4
Civil engineering	16.2	-18.4	14.6	8.2	-13.9	-6.4	-1.2	-11.4	0.1	-13.9	-11.5	-8.5	-12.2	-8.6	-10.8

<sup>1</sup> Working day adjusted.