



## CONSTRUCTION PRODUCTION INDICES<sup>1</sup> IN JUNE 2013<sup>2</sup>

According to the preliminary data, in June 2013, the index of production in section 'Construction' calculated on the base of seasonally adjusted data<sup>3</sup> was 0.1% below the level of the previous month (Table 2).

In June 2013 working day adjusted data<sup>4</sup> showed a decrease by 8.8% in the construction production compared to the same month of 2012 (Table 4).

**Figure 1. Construction Production Indices (2010 = 100)**



<sup>1</sup> Data for June 2013 are preliminary.

<sup>2</sup> The monthly indices show the short-term changes in the construction production between two comparable periods. This information can be used to analyze the current state of the construction activity in the country, as well as short-term forecast for its future development. The indices are calculated on the base of information on hours worked in the construction. The data are collected with monthly sample survey, which includes construction enterprises, which production exceeds 75% of the total production in construction. Construction Production Indices are calculated on the base 2010 = 100.

<sup>3</sup> Seasonal adjustment is a statistical method, which eliminates the seasonal component of time series.

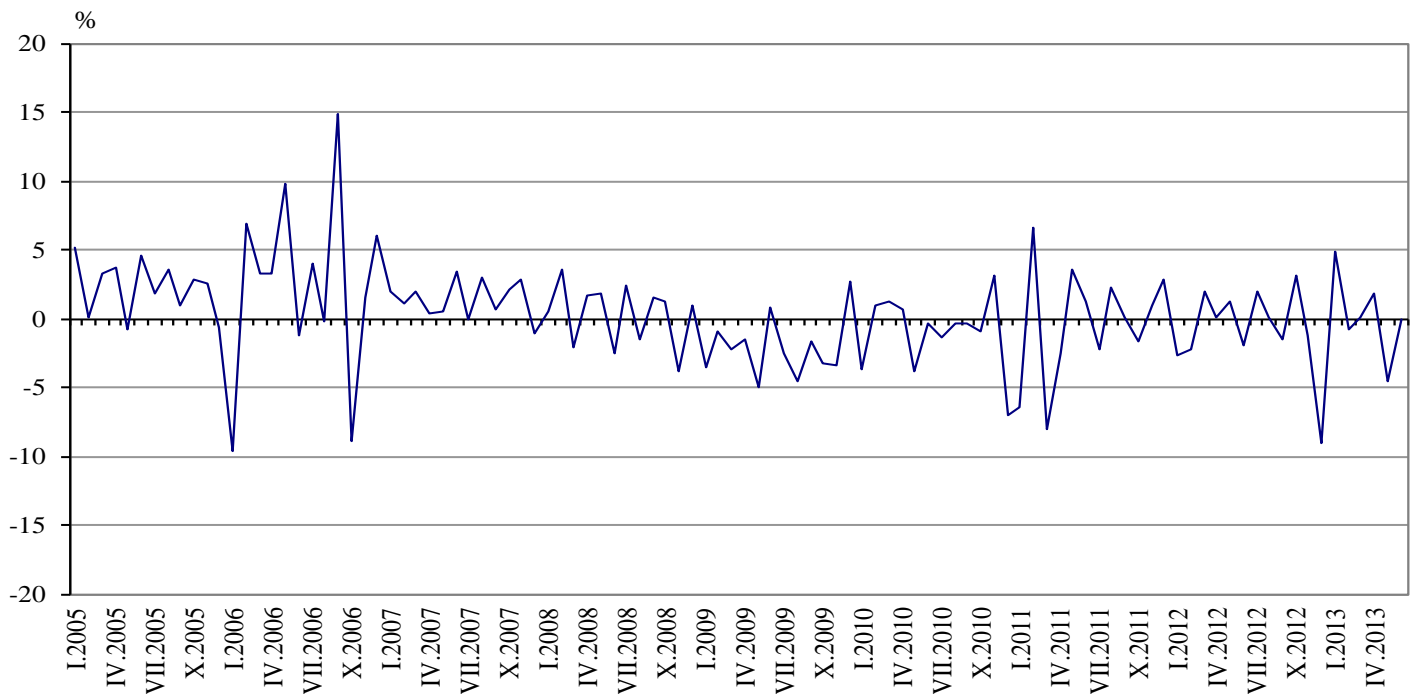
<sup>4</sup> Working day adjustment is an adjustment for variations in monthly data, caused by calendar effects, different number of calendar and working days in the months, national holidays and outliers (for example the presence of more non-working days in May could contribute to the decline in the production in some activities).



## Monthly changes

In June 2013 the construction production was below the level of the previous month. Index of production of civil engineering, calculated from the seasonally adjusted data, marked a decrease by 0.8%, while the production of building construction rose by 0.5% (Table 2).

**Figure 2. Percentage change of the indices of the construction production compared to the previous month (Seasonally adjusted, 2010 = 100)**



### 1. Construction Production Indices (Seasonally adjusted, 2010 = 100)

	2012							2013					
	VI	VII	VIII	IX	X	XI	XII	I	II	III	IV	V	VI
<b>Construction - total</b>	<b>86.0</b>	<b>87.6</b>	<b>87.7</b>	<b>86.4</b>	<b>89.1</b>	<b>88.0</b>	<b>80.0</b>	<b>83.9</b>	<b>83.2</b>	<b>83.3</b>	<b>84.8</b>	<b>80.9</b>	<b>80.8</b>
Building construction	87.4	88.4	87.7	86.7	87.5	86.9	85.3	88.7	87.9	89.5	88.3	85.1	85.5
Civil engineering	84.2	86.5	87.7	86.1	91.1	89.4	73.4	77.9	77.3	75.6	80.4	75.6	75.0



## 2. Percentage changes of the Construction Production Indices compared to the previous month<sup>1</sup>

	2012							2013					
	VI	VII	VIII	IX	X	XI	XII	I	II	III	IV	V	VI
<b>Construction - total</b>	-1.9	1.9	0.1	-1.5	3.1	-1.2	-9.1	4.9	-0.8	0.1	1.8	-4.6	-0.1
Building construction	-1.5	1.1	-0.8	-1.1	0.9	-0.7	-1.8	4.0	-0.9	1.8	-1.3	-3.6	0.5
Civil engineering	-2.5	2.7	1.4	-1.8	5.8	-1.9	-17.9	6.1	-0.8	-2.2	6.3	-6.0	-0.8

<sup>1</sup> Seasonally adjusted.

### Annual changes

On an annual basis in June 2013, the decrease of production in construction, calculated from working day adjusted data, was determined from the negative rate in the civil engineering, as well as in the building construction where was registered drop by 11.9 and by 6.3% respectively (Table 4).

## 3. Construction Production Indices (Working day adjusted, 2010 = 100)

	2010	2011	2012							2013					
	VI	VI	VI	VII	VIII	IX	X	XI	XII	I	II	III	IV	V	VI
<b>Construction - total</b>	108.6	94.9	91.7	95.8	96.0	86.3	98.8	93.1	71.8	74.9	73.9	81.5	86.9	79.8	83.6
Building construction	106.2	101.1	92.2	97.6	97.2	87.2	98.3	92.4	74.9	80.9	79.9	87.8	91.3	82.8	86.4
Civil engineering	111.5	87.1	91.0	93.6	94.5	85.2	99.5	93.9	68.0	67.4	66.4	73.6	81.5	76.0	80.2



#### 4. Percentage changes of the Construction Production Indices compared to the same month of the previous year<sup>1</sup>

	2010	2011	2012							2013					
	VI	VI	VI	VII	VIII	IX	X	XI	XII	I	II	III	IV	V	VI
<b>Construction - total</b>	-15.6	-12.6	-3.4	2.9	0.8	-2.6	5.3	1.1	-12.4	-2.2	8.0	-5.8	3.7	-11.0	-8.8
Building construction	-29.9	-4.8	-8.8	-1.9	-3.7	-7.6	-1.1	-4.0	-11.4	0.7	15.1	-1.6	6.4	-8.9	-6.3
Civil engineering	11.1	-21.9	4.5	9.9	7.1	4.5	14.6	8.2	-13.9	-6.4	-1.2	-11.4	0.1	-13.9	-11.9

<sup>1</sup>Working day adjusted.