

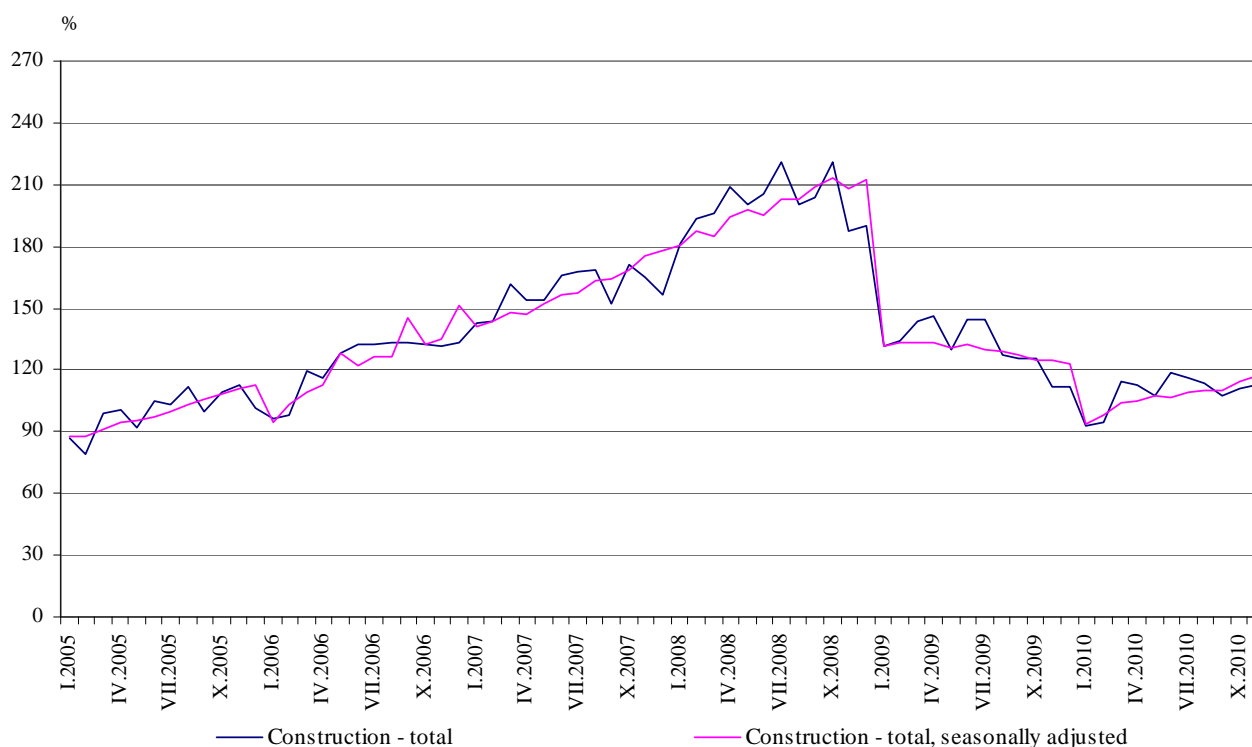


## CONSTRUCTION PRODUCTION INDICES<sup>1</sup> IN NOVEMBER 2010<sup>2</sup>

According to the preliminary data of the NSI, the production in section 'Construction', calculated on the base of seasonally adjusted data<sup>3</sup>, registered an increase by 2.6% in November 2010, compared to the previous month (Table 2).

In November 2010 working day adjusted data<sup>4</sup> showed a rise by 0.8% in the construction production, compared to the same month of 2009 (Table 4).

**Figure 1. Construction Production Indices  
(2005 = 100)**



<sup>1</sup> Data for November 2010 are preliminary.

<sup>2</sup> The monthly indices show the short-term changes in the construction production between two comparable periods. This information can be used to analyze the current state of the construction activity in the country, as well as short-term forecast for its future development. The indices are calculated on the base of information on hours worked in the construction. The data are collected with monthly sample survey, which includes construction enterprises, which production exceeds 75% of the total production in construction. Construction Production Indices are calculated on the base (2005 = 100).

<sup>3</sup> **Seasonal adjustment** is a statistical method, which eliminates the seasonal component of time series and it is particularly suitable for long-term comparisons and analysis of the data.

<sup>4</sup> **Working day adjustment** is an adjustment for variations in monthly data, caused by calendar effects, different number of calendar and working days in the months, national holidays and outliers (for example the presence of more non-working days in May could contribute to the decline in the production in some activities).

The seasonally and working day adjusted data for period 2000 - 2010 can be found in NSI internet web-site:  
(<http://www.nsi.bg/otrasalen.php?otr=32>).



**Figure 2. Percentage change of the indices of the construction production compared to the previous month**  
(Seasonally adjusted , 2005 = 100)

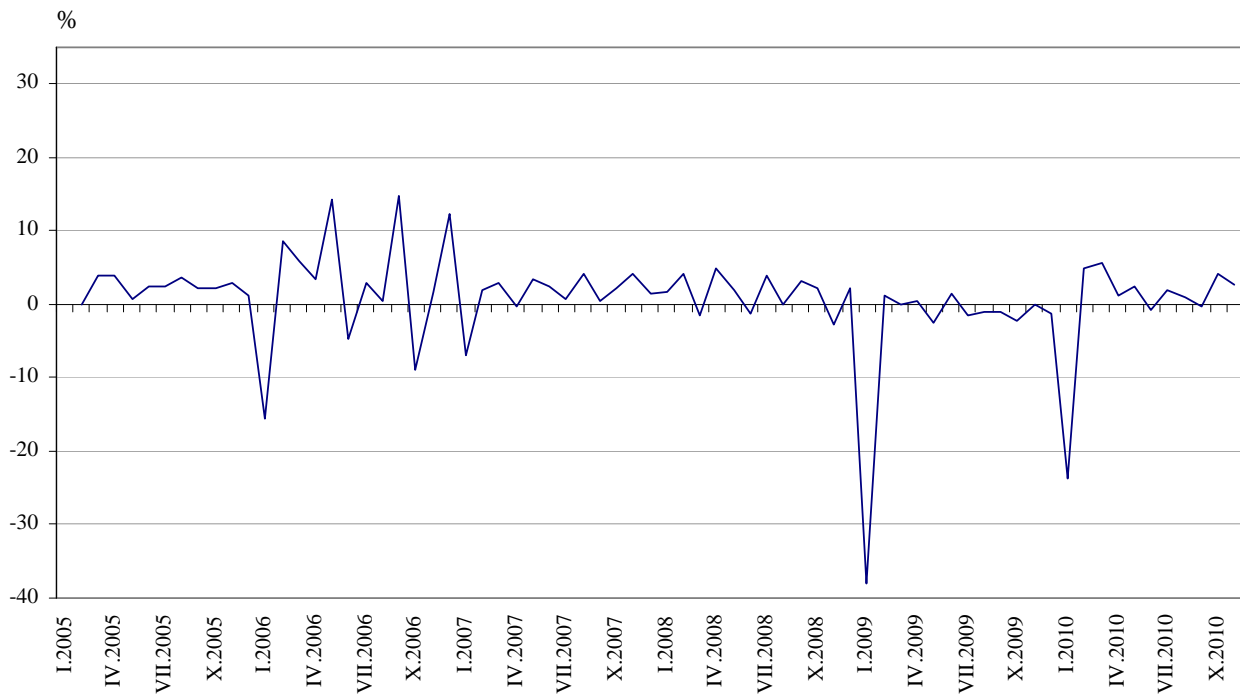


Table 1

**Monthly Construction Production Indices**  
(Seasonally adjusted, 2005 = 100)

	2009		2010										
	XI	XII	I	II	III	IV	V	VI	VII	VIII	IX	X	XI
<b>Construction - total</b>	<b>124.5</b>	<b>122.9</b>	<b>93.7</b>	<b>98.2</b>	<b>103.9</b>	<b>105.3</b>	<b>107.7</b>	<b>106.8</b>	<b>109.0</b>	<b>109.9</b>	<b>109.7</b>	<b>114.2</b>	<b>117.2</b>
Building construction	106.1	103.1	98.7	95.7	95.9	92.7	91.8	90.1	88.2	88.2	86.6	88.5	89.5
Civil engineering	143.6	144.1	142.8	142.0	144.5	145.0	146.2	147.1	146.1	148.9	147.0	150.7	153.7



### Monthly changes

In November 2010 the construction production was over the level of previous month. The increase of the production of the building construction was by 1.1% and the production of the civil engineering - by 2.0 %, calculated from seasonally adjusted data (Table 2).

Table 2

### Percentage changes of monthly Construction Production Indices compared to the previous month<sup>1</sup>

	2009		2010										
	XI	XII	I	II	III	IV	V	VI	VII	VIII	IX	X	XI
<b>Construction - total</b>	<b>-0.1</b>	<b>-1.3</b>	<b>-23.7</b>	<b>4.8</b>	<b>5.8</b>	<b>1.3</b>	<b>2.3</b>	<b>-0.9</b>	<b>2.0</b>	<b>0.9</b>	<b>-0.2</b>	<b>4.1</b>	<b>2.6</b>
Building construction	-2.0	-2.8	-4.3	-3.0	0.2	-3.3	-1.0	-1.8	-2.1	0.0	-1.8	2.1	1.1
Civil engineering	1.8	0.3	-0.9	-0.6	1.8	0.3	0.8	0.6	-0.7	1.9	-1.3	2.5	2.0

<sup>1</sup> Seasonally adjusted.

Table 3

### Monthly Construction Production Indices (working day adjusted, 2005 = 100)

	2007	2008	2009		2010										
	XI	XI	XI	XII	I	II	III	IV	V	VI	VII	VIII	IX	X	XI
<b>Construction - total</b>	<b>166.1</b>	<b>190.2</b>	<b>112.4</b>	<b>113.0</b>	<b>95.0</b>	<b>95.0</b>	<b>114.3</b>	<b>113.1</b>	<b>110.5</b>	<b>117.9</b>	<b>116.1</b>	<b>113.6</b>	<b>109.5</b>	<b>112.0</b>	<b>113.3</b>
Building construction	160.2	179.0	101.0	100.1	85.8	82.5	97.6	95.2	91.7	97.2	96.7	97.1	91.9	92.2	92.0
Civil engineering	173.5	215.3	141.8	138.3	117.7	125.3	152.1	154.5	150.8	164.5	158.3	154.8	149.3	157.6	160.5



## Annual changes

On annual bases in November 2010 the increase of production in construction, calculated from working day adjusted was determined mainly from the increase by 13.2% in the civil engineering, while the building construction showed a drop by 8.9 % (Table 4).

Table 4

### Percentage changes of monthly Construction Production Indices compared to the same month of the previous year<sup>1</sup>

	2007	2008	2009		2010										
	XI	XI	XI	XII	I	II	III	IV	V	VI	VII	VIII	IX	X	XI
<b>Construction - total</b>	<b>25.8</b>	<b>14.5</b>	<b>-40.9</b>	<b>-41.7</b>	<b>-27.9</b>	<b>-29.0</b>	<b>-21.5</b>	<b>-22.8</b>	<b>-17.8</b>	<b>-17.7</b>	<b>-18.8</b>	<b>-11.6</b>	<b>-13.0</b>	<b>-10.7</b>	<b>0.8</b>
Building construction	24.0	11.7	-43.5	-45.9	-35.2	-37.3	-30.4	-32.2	-28.0	-27.3	-26.5	-18.8	-20.3	-18.9	-8.9
Civil engineering	24.2	24.1	-34.2	-34.3	-7.2	-11.3	-4.8	-4.5	-1.9	-0.5	-5.1	2.7	1.9	5.2	13.2

<sup>1</sup> Working day adjusted.