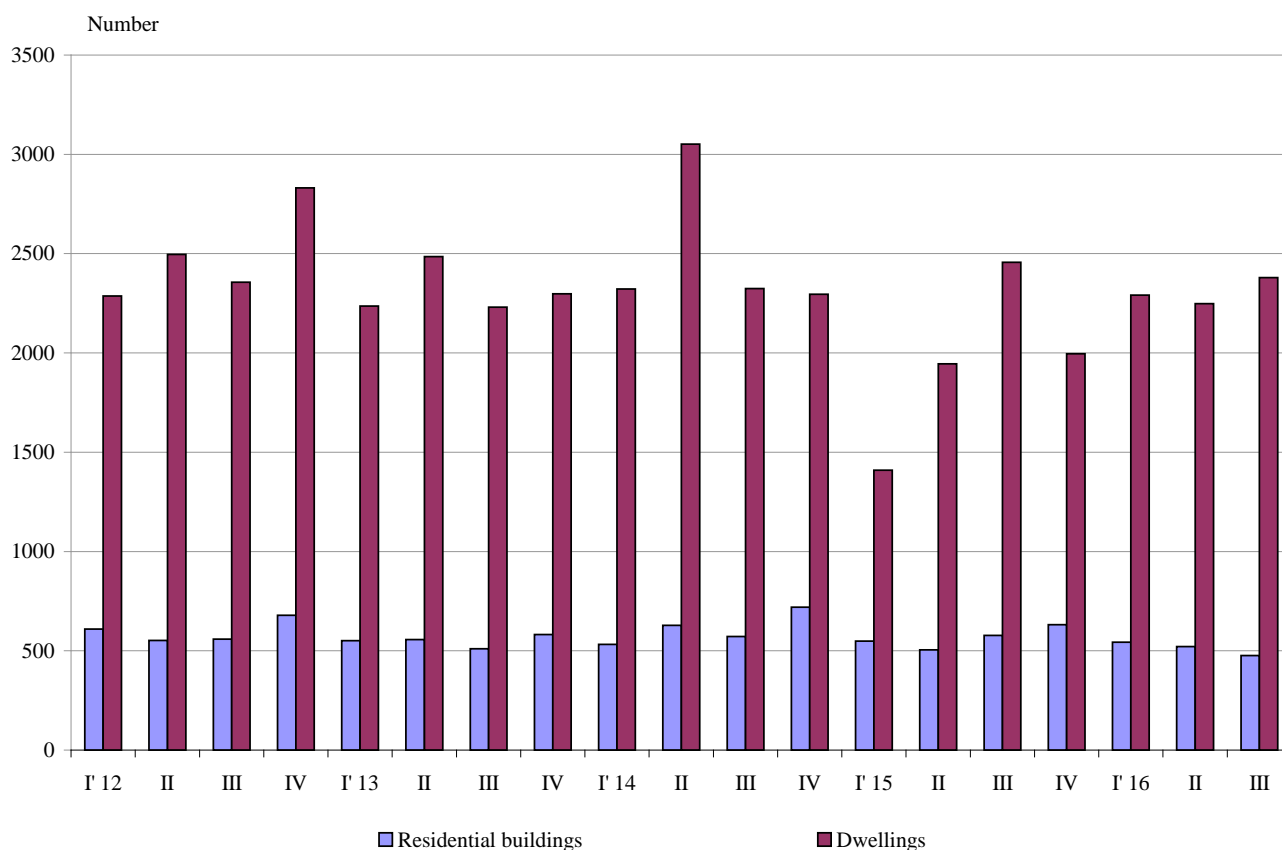




NEWLY BUILT RESIDENTIAL BUILDINGS AND DWELLINGS COMPLETED IN THE THIRD QUARTER OF 2016 (PRELIMINARY DATA)

According to preliminary data of the National Statistical Institute in the third quarter of 2016 the number of newly built residential buildings was 476 and the newly built dwellings in them were 2 379 (Annex, Table 1). Compared to the third quarter of 2015 the buildings were 101 less (or 17.5%), and the newly built dwellings in them decreased by 77 or by 3.1% (Figure 1).

Figure 1. Newly built residential buildings and dwellings completed by quarters

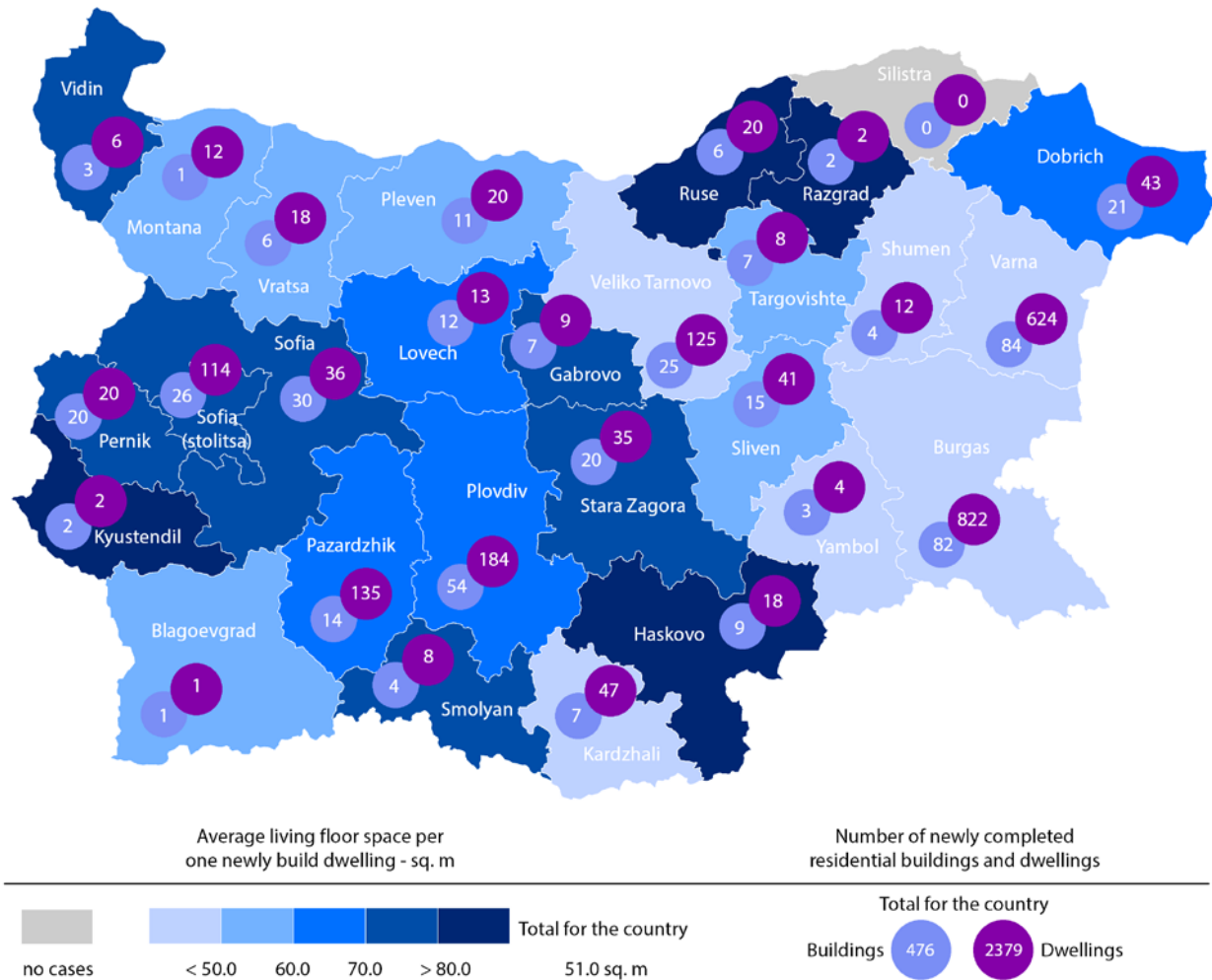


In the third quarter of 2016 78.2% of the newly built residential buildings were with steel-concrete construction, 19.5% with solid structure, 2.1% with 'other' and 0.2% with panel. Highest is the relative share of houses (67.7%) followed by blocks of flats (21.9%). As compared to the third quarter of 2015 an increase of the number of newly built blocks of flats only is observed (Annex, Table 2).

Highest is the number of residential buildings built in district Varna - 84 buildings with 624 dwellings in them, followed by Burgas - 82 residential buildings with 822 dwellings and Plovdiv - 54 residential buildings with 184 dwellings (Figure 2).



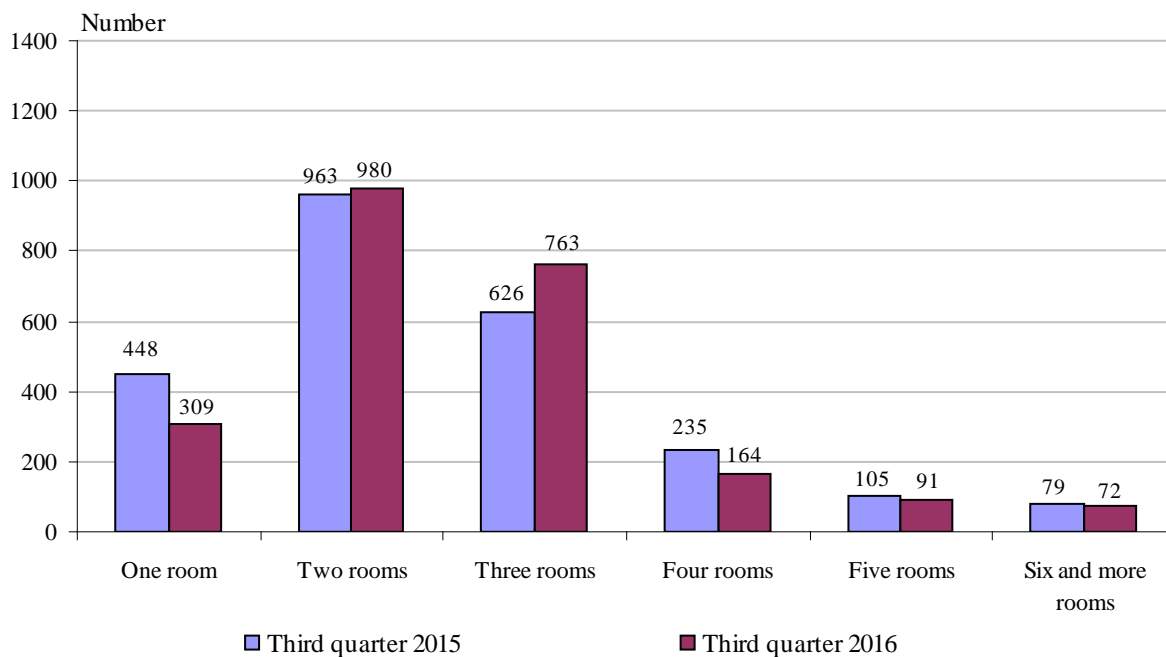
Figure 2. Newly built residential buildings and dwellings completed in third quarter of 2016 by districts



Highest is the number of newly built dwellings with two rooms (41.2%), followed by the number of those with three rooms (32.1%) and lowest is the number of dwellings with six and more rooms - 3.0% (Figure 3).



Figure 3. Newly built dwellings completed by number of rooms



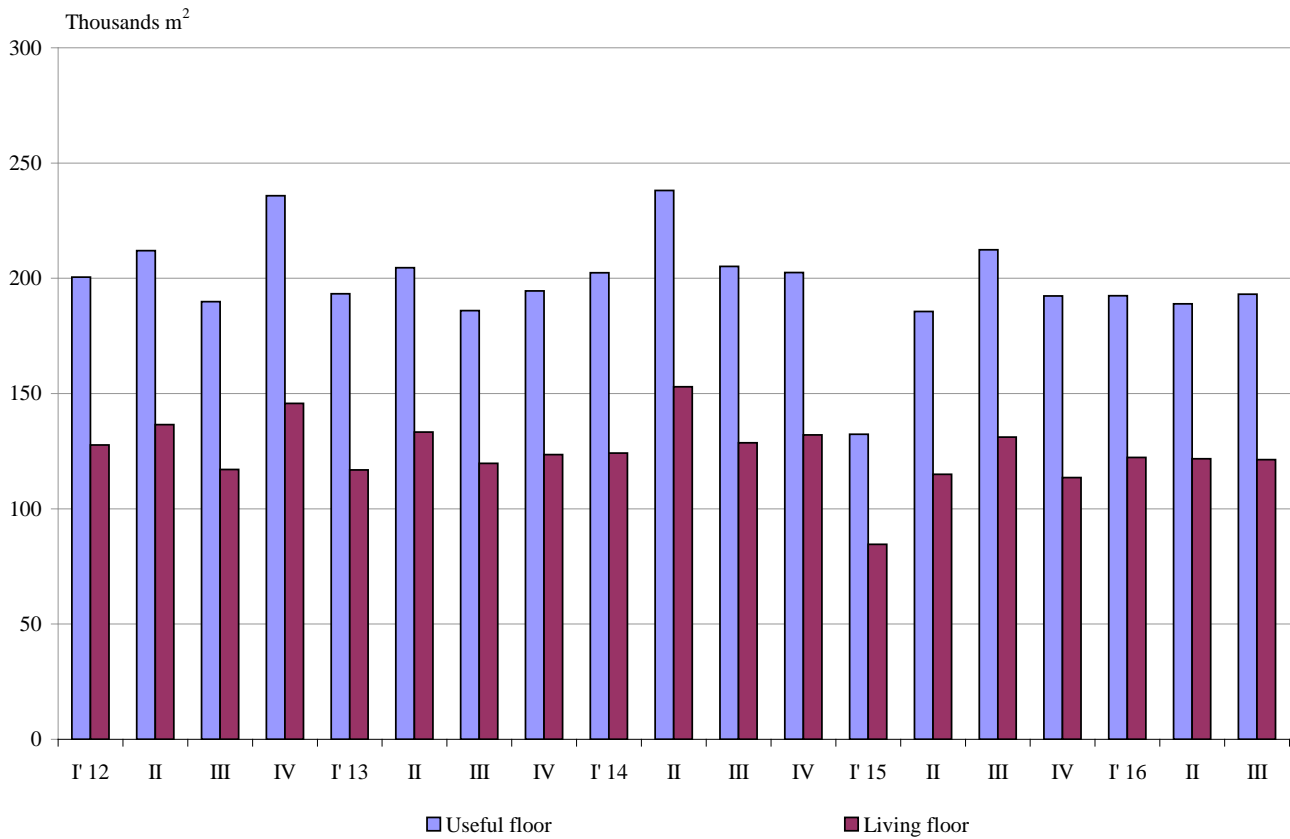
In the third quarter of 2016 **the total useful space** of newly built dwellings was 193.1 thousand sq. m or 9.1% less compared to the same quarter of 2015, **the living floor** space decreased (by 7.5%) to 121.3 thousand sq. m (Figure 4).

The average useful floor space of a newly built dwelling decreased from 86.5 sq. m in the third quarter of 2015 to 81.2 sq. m in the same quarter of 2016.

The biggest average useful floor space of a newly built dwelling was recorded in districts Ruse - 170.4 sq. m and Sofia - 144.2 sq. m, and the smallest one in Shumen - 57.6 sq. m and Burgas - 68.0 sq. meters.



Figure 4. Total useful floor space and living floor space of newly built dwellings completed by quarters





Methodological notes

The statistical data about the newly built residential buildings and dwellings are prepared on the basis of quarterly reports of the municipal administrations.

In the scope of survey are newly built residential buildings with approved or valid usage license according to Regulation No. 2/31.07.2003 of the Ministry of Regional Development and Public Works.

Living floor space is the floor space of living-rooms, bedrooms, recesses for sleeping, dining-rooms, living-rooms, cabinets and libraries of scientists and drawing-rooms but does not include the space of kitchens.

Service floor space is the floor space of rooms and kitchens with less than 4 square meters' floor space, vestibules with a portal or other screen, corridors, bathrooms, toilets, larders, hanging closets, other service rooms such as drying-rooms, laundries or balconies regardless their space. The space of kitchens with over 4 sq. m floor space is shown separately.

The useful floor space of dwelling is a sum of the living-floor-space, the service floor space and the space of the kitchens.

The average useful floor space is a ratio between the useful floor space and the number of dwellings.



Annex

Table 1

Newly build residential buildings and dwellings completed in the third quarter of 2016¹

Districts	Newly completed residential buildings and dwellings - in numbers		Useful floor area of newly built dwellings - sq. m			
	Buildings	Dwellings	Total	Living floor space	Service floor space	Area of kitchens
Total	476	2379	193116	121307	56294	15515
Blagoevgrad	1	1	79	53	12	14
Burgas	82	822	55913	35722	16771	3420
Varna	84	624	44960	28254	14123	2583
Veliko Tarnovo	25	125	8843	4655	2788	1400
Vidin	3	6	794	443	297	54
Vratsa	6	18	1660	1018	471	171
Gabrovo	7	9	1181	707	376	98
Dobrich	21	43	4319	2598	1148	573
Kardzhali	7	47	3714	2086	1080	548
Kyustendil	2	2	272	228	17	27
Lovech	12	13	1568	884	484	200
Montana	1	12	956	680	180	96
Pazardzhik	14	135	13250	8239	3316	1695
Pernik	20	20	2349	1475	576	298
Pleven	11	20	2247	1064	977	206
Plovdiv	54	184	18581	11998	5249	1334
Razgrad	2	2	265	162	81	22
Ruse	6	20	3407	1692	1496	219
Silistra	-	-	-	-	-	-
Sliven	15	41	3446	2243	974	229
Smolyan	4	8	973	590	242	141
Sofia	30	36	5192	2876	1754	562
Sofia (stolitsa)	26	114	12324	8433	2754	1137
Stara Zagora	20	35	2707	2528	92	87
Targovishte	7	8	911	463	372	76
Haskovo	9	18	2200	1632	409	159
Shumen	4	12	691	394	211	86
Yambol	3	4	314	190	44	80

¹ Preliminary data.



Table 2

Newly built residential buildings by type of building

(Number)

	2014				2015				2016 ¹		
	I quarter	II quarter	III quarter	IV quarter	I quarter	II quarter	III quarter	IV quarter	I quarter	II quarter	III quarter
Total	532	628	572	720	549	505	577	632	543	521	476
Houses	366	417	412	518	415	334	400	462	384	378	322
Blocks of flats	75	123	97	89	70	76	82	86	94	80	104
Mixed buildings	26	40	24	38	23	24	26	33	20	22	14
Hostels	8	-	1	2	1	1	13	1	1	2	-
Country houses	47	45	36	72	39	70	50	49	41	38	34
Buildings of institutional households	10	3	2	1	1	-	6	1	3	1	2

¹ Preliminary data.