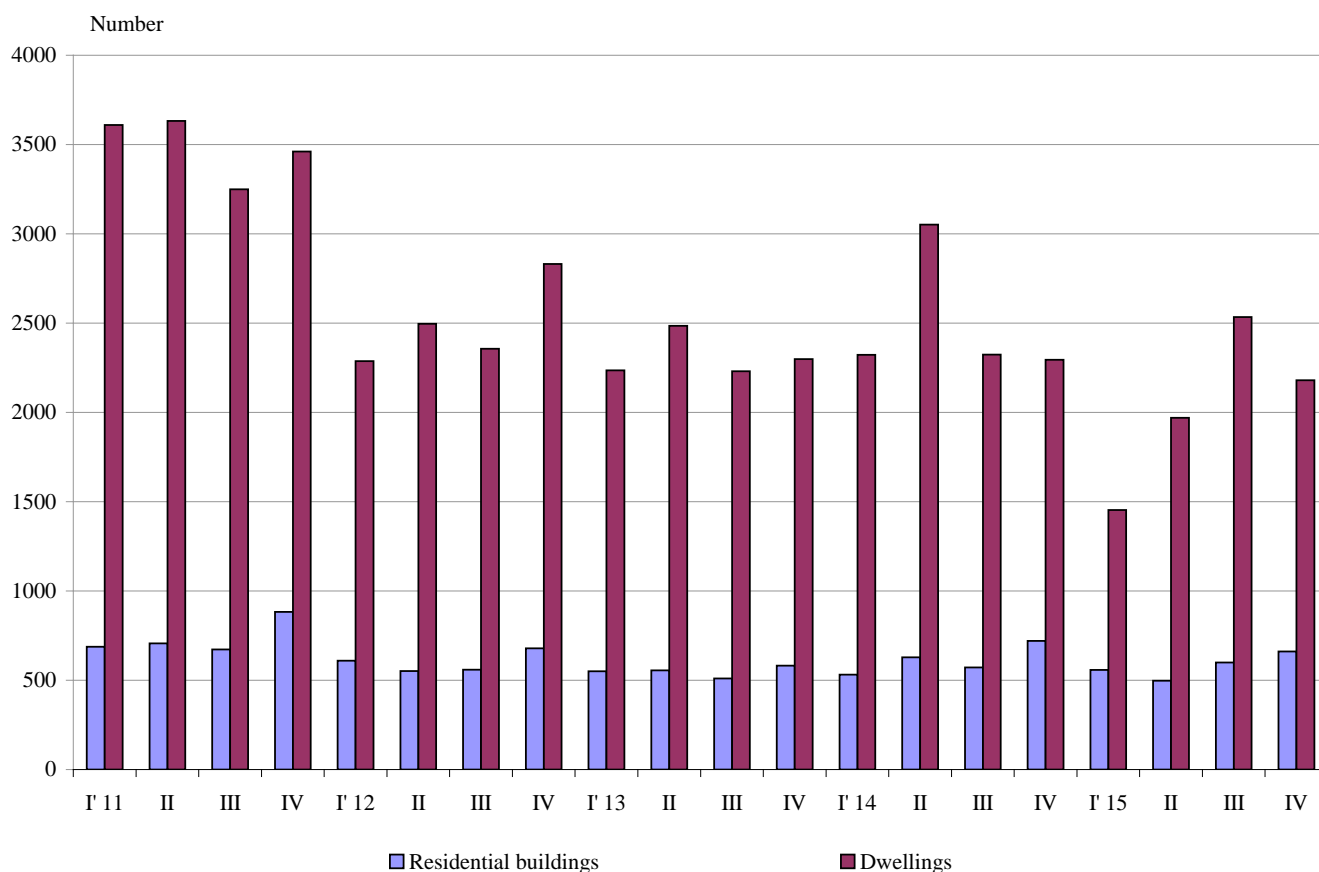




NEWLY BUILT RESIDENTIAL BUILDINGS AND DWELLINGS COMPLETED IN THE FOURTH QUARTER OF 2015 (PRELIMINARY DATA)

According to preliminary data of the National Statistical Institute in the fourth quarter of 2015 the number of newly built residential buildings was 661 and the newly built dwellings in them were 2 180 (Annex, Table 1). Compared to the fourth quarter of 2014 the buildings were 59 (or 8.2%) less and the newly built dwellings in them decreased by 115 or by 5.0% (Figure 1).

Figure 1. Newly built residential buildings and dwellings completed by quarters



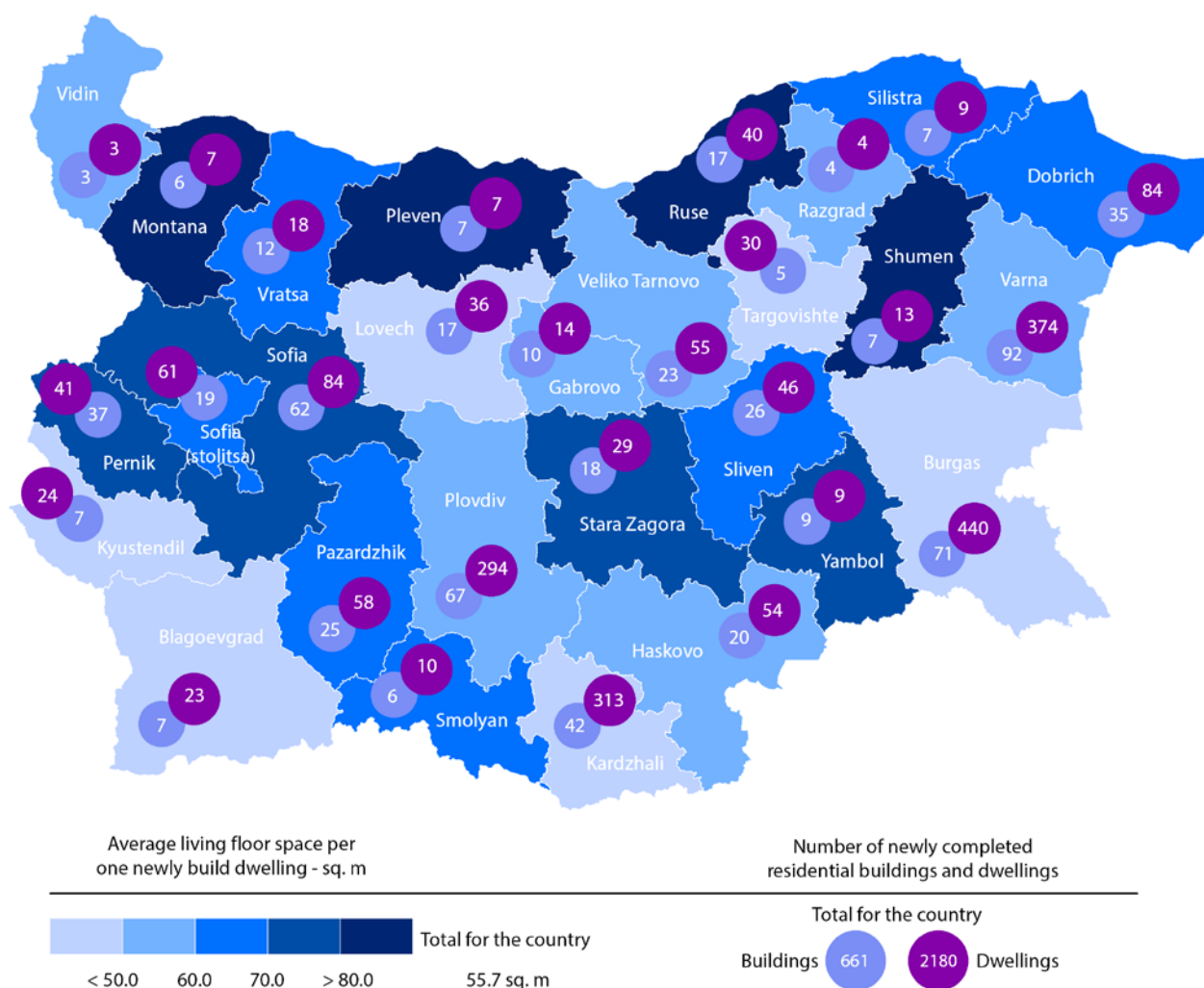
In the fourth quarter of 2015 68.2% of the newly built residential buildings were with steel-concrete construction, 28.1% with solid structure, 2.3% with 'other' and 1.4% with panel.

The newly built residential buildings distribution by type shows that highest is the relative share of houses (73.3%) followed by blocks of flats (12.7%). As compared to the fourth quarter of 2014 an increase of the number of newly built mixed buildings only is observed (Annex, Table 2).



Highest is the number of residential buildings built in district Varna - 92 buildings with 374 dwellings in them, followed by Burgas - 71 residential buildings with 440 dwellings and Plovdiv - 67 residential buildings with 294 dwellings (Figure 2).

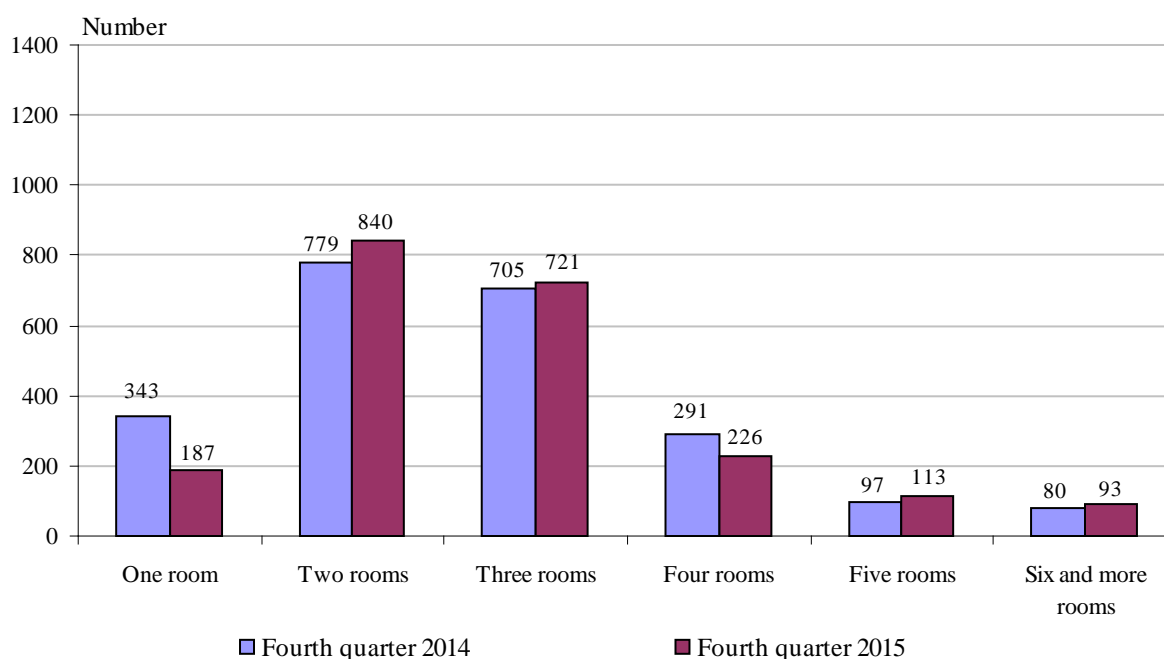
Figure 2. Newly built residential buildings and dwellings completed in fourth quarter of 2015 by districts



Highest is the number of newly built dwellings with two rooms (38.5%), followed by the number of those with three rooms (33.1%) and lowest is the number of dwellings with six and more rooms - 4.2% (Figure 3).



Figure 3. Newly built dwellings completed by number of rooms



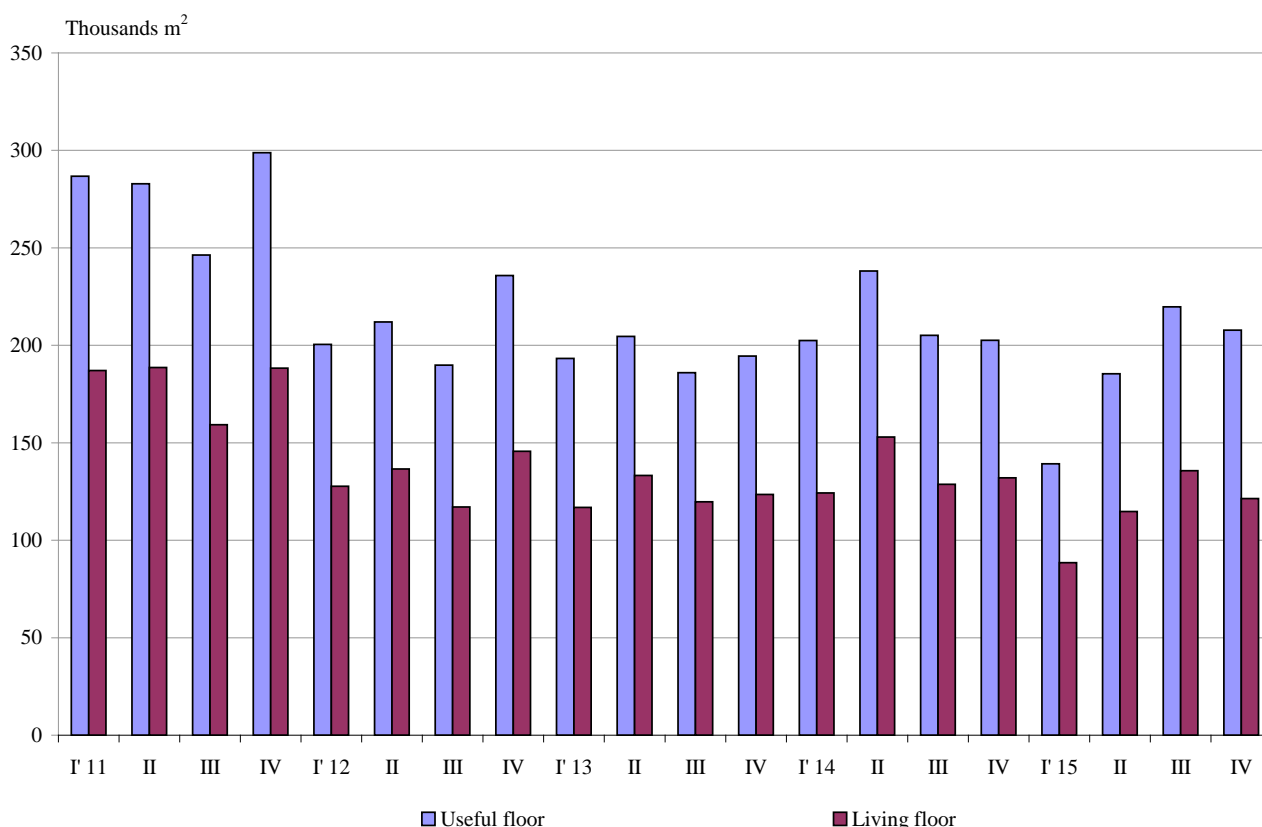
In the fourth quarter of 2015 **the total useful space** of newly built dwellings was 207.8 thousand sq. m or by 2.6% more compared to the same quarter of 2014, but **the living floor** space decreased (by 8.0%) to 121.4 thousand sq. m (Figure 4).

The average useful floor space of newly built dwelling increased from 88.2 sq. m in the fourth quarter of 2014 to 95.3 sq. m in the same quarter of 2015.

The biggest average useful floor space of a newly built dwelling was recorded in district Montana - 157.1 sq. m and Pleven - 153.1 sq. m, and the smallest one in Burgas - 71.4 sq. m and Kyustendil - 71.8 sq. m.



Figure 4. Total useful floor space and living floor space of newly built dwellings completed by quarters



Methodological notes

The statistical data about the newly built residential buildings and dwellings are prepared on the basis of quarterly reports of the municipal administrations.

In the scope of survey are newly built residential buildings with approved or valid usage license according to Regulation № 2/31.07.2003 of the Ministry of Regional Development and Public Works.

Living floor space is the floor space of living-rooms, bedrooms, recesses for sleeping, dining-rooms, living-rooms, cabinets and libraries of scientists and drawing-rooms but does not include the space of kitchens.

Service floor space is the floor space of rooms and kitchens with less than 4 square meters floor space, vestibules with a portal or other screen, corridors, bathrooms, toilets, larders, hanging closets, other service rooms such as drying-rooms, laundries or balconies regardless their space. The space of kitchens with over 4 sq. m. floor space is shown separately.



The useful floor space of dwelling is a sum of the living-floor-space, the service floor space and the space of the kitchens.

The average useful floor space is a ratio between the useful floor space and the number of dwellings.

Annex

Table 1

Newly build residential buildings and dwellings completed in the fourth quarter of 2015¹

Districts	Newly completed residential buildings and dwellings - in numbers		Useful floor area of newly built dwellings - sq. m			
	Buildings	Dwellings	Total	Living floor space	Service floor space	Area of kitchens
Total	661	2180	207829	121402	68572	17855
Blagoevgrad	7	23	1759	924	686	149
Burgas	71	440	31435	19384	9878	2173
Varna	92	374	38013	20809	15825	1379
Veliko Tarnovo	23	55	4656	2815	1446	395
Vidin	3	3	287	168	102	17
Vratsa	12	18	1955	1218	597	140
Gabrovo	10	14	1376	837	415	124
Dobrich	35	84	10209	5451	3729	1029
Kardzhali	42	313	28278	14827	9748	3703
Kyustendil	7	24	1722	821	757	144
Lovech	17	36	2845	1760	727	358
Montana	6	7	1100	561	435	104
Pazardzhik	25	58	7558	4030	2840	688
Pernik	37	41	4848	3033	1324	491
Pleven	7	7	1072	675	306	91
Plovdiv	67	294	26975	17637	6359	2979
Razgrad	4	4	490	236	184	70
Ruse	17	40	5628	3208	2087	333
Silistra	7	9	921	550	307	64
Sliven	26	46	5145	3101	1695	349
Smolyan	6	10	903	651	158	94
Sofia	62	84	10706	5983	3369	1354
Sofia (stolitsa)	19	61	6134	4177	1362	595
Stara Zagora	18	29	2578	2078	345	155
Targovishte	5	30	2631	1405	1067	159
Haskovo	20	54	5874	3141	2236	497
Shumen	7	13	1783	1267	397	119
Yambol	9	9	948	655	191	102

¹ Preliminary data.



Table 2

Newly built residential buildings by type of building

(Number)

	2013				2014				2015 ¹			
	I quarter	II quarter	III quarter	IV quarter	I quarter	II quarter	III quarter	IV quarter	I quarter	II quarter	III quarter	IV quarter
Total	551	556	510	582	532	628	572	720	558	497	600	661
Houses	388	391	342	392	366	417	412	518	420	327	411	485
Blocks of flats	97	99	92	88	75	123	97	89	74	78	88	84
Mixed buildings	26	29	21	30	26	40	24	38	23	24	27	41
Hostels	1	2	2	5	8	-	1	2	1	1	13	1
Country houses	39	35	53	62	47	45	36	72	39	67	55	49
Buildings of institutional households	-	-	-	5	10	3	2	1	1	-	6	1

¹ Preliminary data.