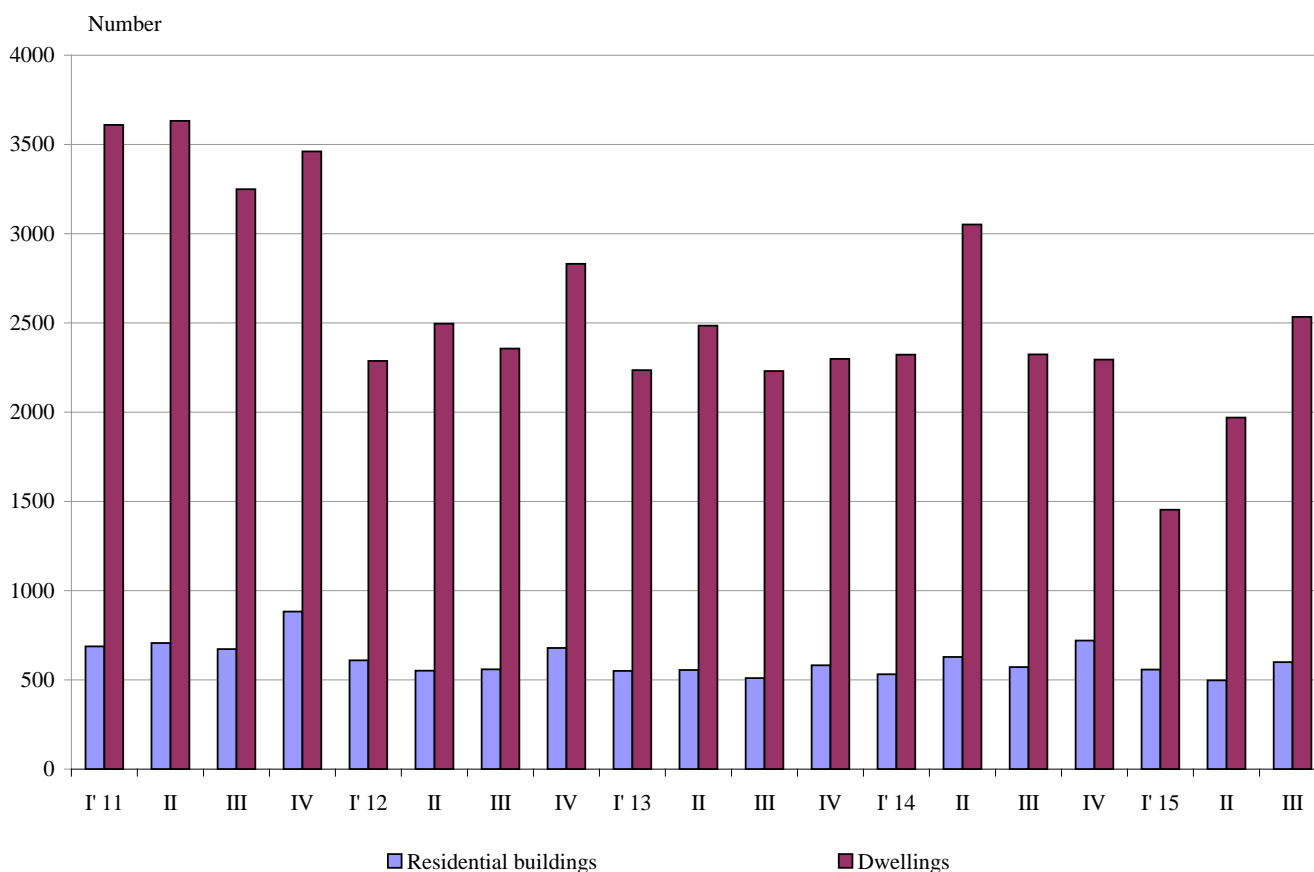




NEWLY BUILT RESIDENTIAL BUILDINGS AND DWELLINGS COMPLETED IN THE THIRD QUARTER OF 2015 (PRELIMINARY DATA)

According to preliminary data of the National Statistical Institute in the third quarter of 2015 the number of newly built residential buildings was 600 and the newly built dwellings in them was 2 534 (Annex, Table 1). Compared to the third quarter of 2014 the buildings were by 28 more (or by 4.9%) and the newly built dwellings in them increased by 67 or by 9.0% (Figure 1).

Figure 1. Newly built residential buildings and dwellings completed by quarters



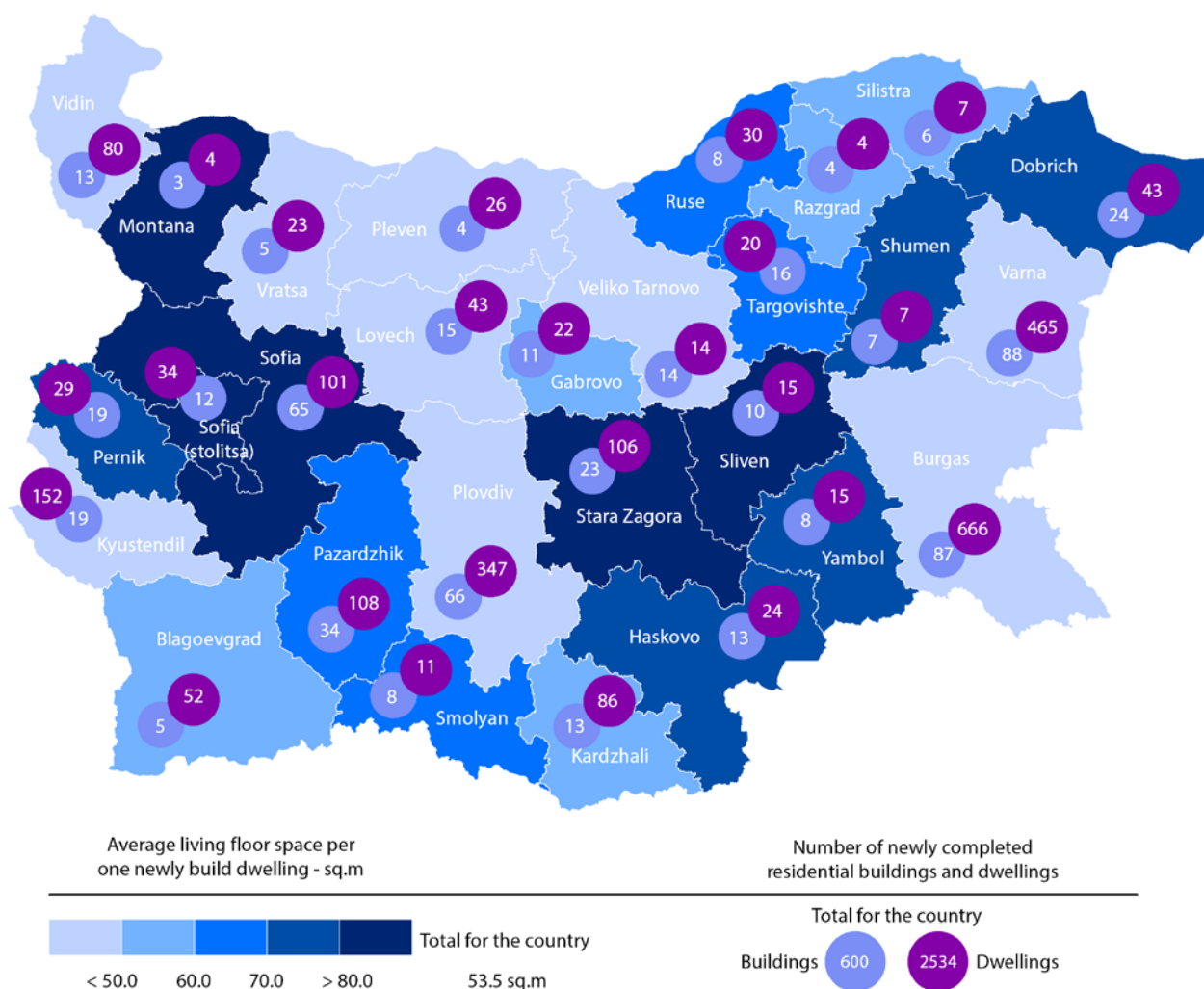
In the third quarter of 2015 73.5% of the newly built residential buildings were with steel-concrete construction, 24.5% with solid structure, 1.5% with 'other' and 0.5% with panel.

The newly built residential buildings distribution by type shows that highest is the relative share of houses (68.5%) followed by blocks of flats (14.7%). As compared to the third quarter of 2014 the number of newly built country houses, hostels, buildings of institutional households and mixed buildings rose, while the number of newly built blocks of flats and houses dropped (Annex, Table 2).



Highest is the number of residential buildings built in district Varna - 88 buildings with 465 dwellings in them, followed by Burgas - 87 residential buildings with 666 dwellings and Plovdiv - 66 residential buildings with 347 dwellings (Figure 2).

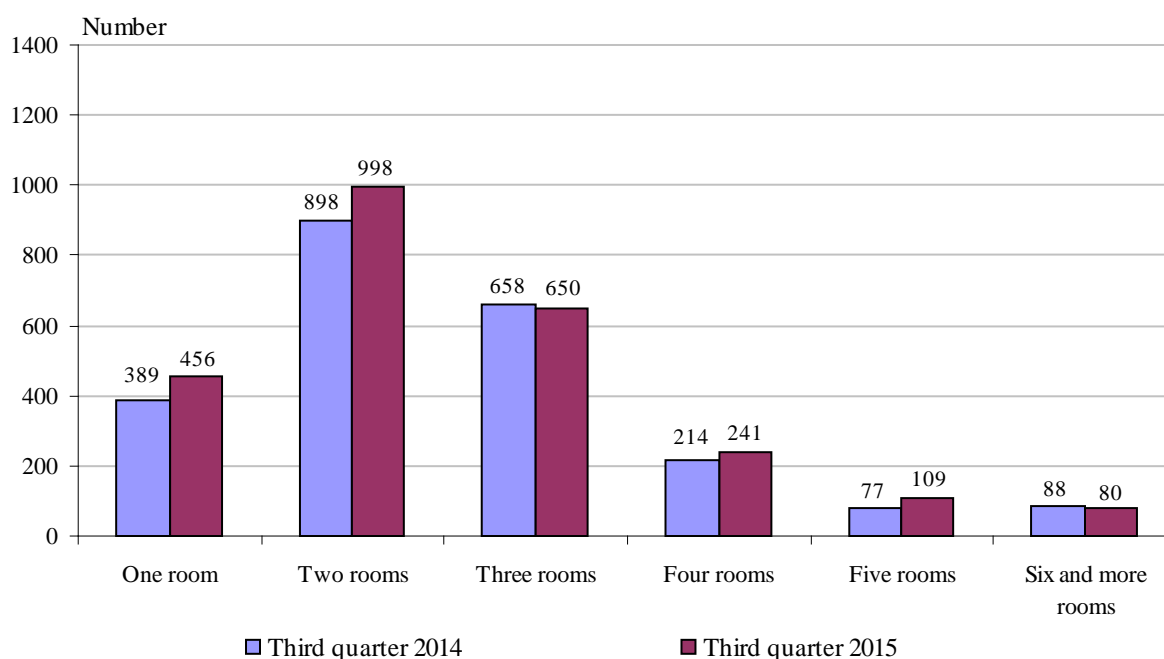
Figure 2. Newly built residential buildings and dwellings completed in third quarter of 2015 by districts



Highest was the number of newly built dwellings with two rooms (39.4%), followed by the number of those with three rooms (25.6%) and lowest is the number of dwellings with six and more rooms - 3.2% (Figure 3).



Figure 3. Newly built dwellings completed by number of rooms



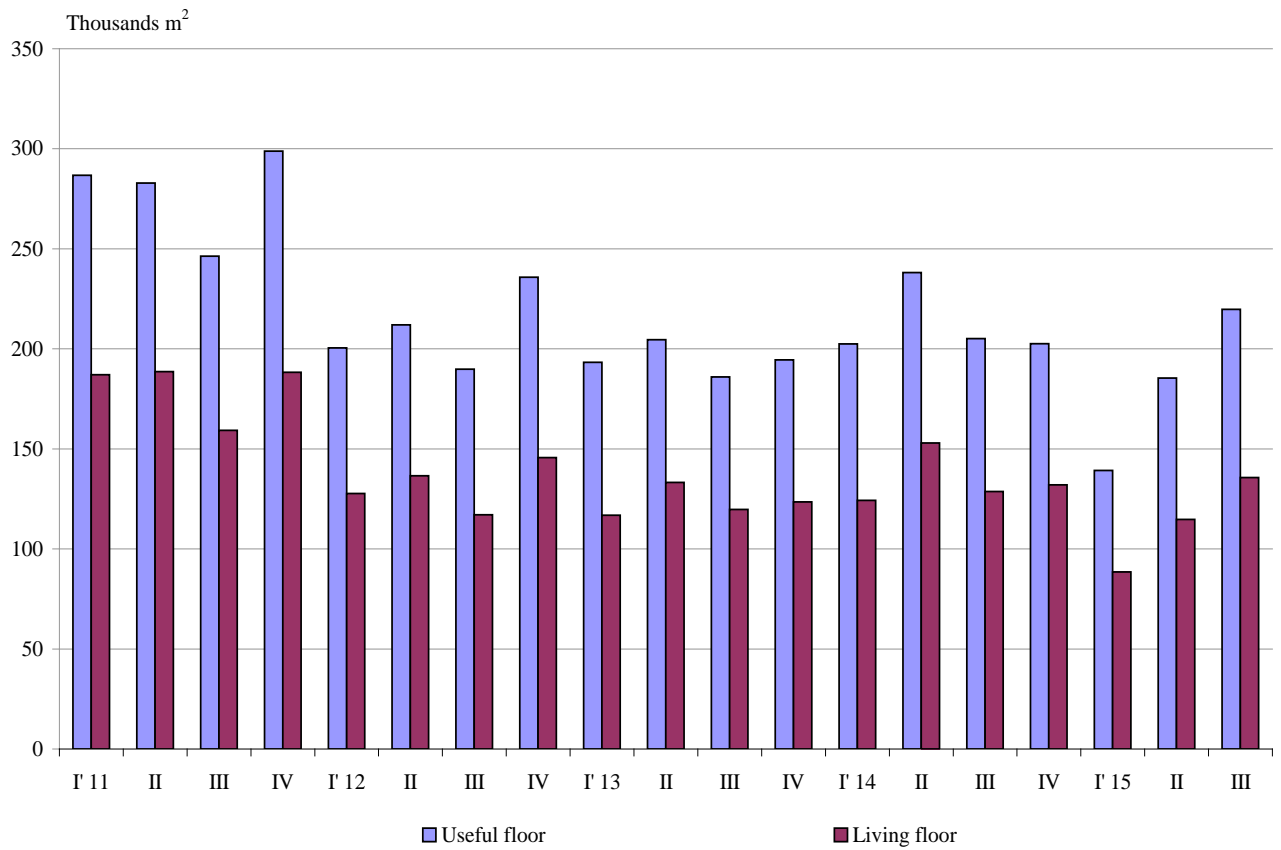
In the third quarter of 2015 **the total useful space** of newly built dwellings was 219.8 thousand sq. m or by 7.1% more with comparison to the same quarter of 2014. **The living floor** space also increased (by 5.5%) and reached 135.7 thousand sq. m (Figure 4).

At the same time **the average useful floor space** of newly built dwelling decreased from 88.3 sq. m in the third quarter of 2014 to 86.7 sq. m in the same quarter of 2015.

The biggest average useful floor space of a newly built dwelling was recorded in district Sofia (stolitsa) - 155.0 sq. m and Sliven - 142.3 sq. m, and the smallest one in Vidin and Vratsa - 57.7 sq. m.



Figure 4. Total useful floor space and living floor space of newly built dwellings completed by quarters





Methodological notes

The statistical data about the newly built residential buildings and dwellings are prepared on the basis of quarterly reports of the municipal administrations.

In the scope of survey are newly built residential buildings with approved or valid usage license according to Regulation № 2/31.07.2003 of the Ministry of Regional Development and Public Works.

Living floor space is the floor space of living-rooms, bedrooms, recesses for sleeping, dining-rooms, living-rooms, cabinets and libraries of scientists and drawing-rooms but does not include the space of kitchens.

Service floor space is the floor space of rooms and kitchens with less than 4 square meters floor space, vestibules with a portal or other screen, corridors, bathrooms, toilets, ladders, hanging closets, other service rooms such as drying-rooms, laundries or balconies regardless their space. The space of kitchens with over 4 sq. m. floor space is shown separately.

The useful floor space of dwelling is a sum of the living-floor-space, the service floor space and the space of the kitchens.

The average useful floor space is a ratio between the useful floor space and the number of dwellings.



Annex

Table 1

Newly build residential buildings and dwellings completed in the third quarter of 2015¹

Districts	Newly completed residential buildings and dwellings - in numbers		Useful floor area of newly built dwellings - sq. m			
	Buildings	Dwellings	Total	Living floor space	Service floor space	Area of kitchens
Total	600	2534	219800	135684	63201	20915
Blagoevgrad	5	52	4572	3083	1211	278
Burgas	87	666	52447	32829	14983	4635
Varna	88	465	35196	20512	11370	3314
Veliko Tarnovo	14	14	1330	689	558	83
Vidin	13	80	4616	3121	1080	415
Vratsa	5	23	1326	895	385	46
Gabrovo	11	22	2162	1198	756	208
Dobrich	24	43	4735	3383	906	446
Kardzhali	13	86	9025	4559	3404	1062
Kyustendil	19	152	9984	5867	2601	1516
Lovech	15	43	2961	1720	858	383
Montana	3	4	519	336	143	40
Pazardzhik	34	108	11588	6964	3323	1301
Pernik	19	29	3146	2143	553	450
Pleven	4	26	1565	1000	468	97
Plovdiv	66	347	30547	16985	10556	3006
Razgrad	4	4	362	213	113	36
Ruse	8	30	2876	1811	794	271
Silistra	6	7	659	404	193	62
Sliven	10	15	2135	1271	675	189
Smolyan	8	11	1011	737	140	134
Sofia	65	101	13854	8481	3892	1481
Sofia (stolitsa)	12	34	5269	3980	861	428
Stara Zagora	23	106	10004	8671	860	473
Targovishte	16	20	2212	1373	741	98
Haskovo	13	24	3216	1877	1073	266
Shumen	7	7	873	505	274	94
Yambol	8	15	1610	1077	430	103

¹ Preliminary data.



Table 2

Newly built residential buildings by type of building

(Number)

	2013				2014				2015 ¹		
	I quarter	II quarter	III quarter	IV quarter	I quarter	II quarter	III quarter	IV quarter	I quarter	II quarter	III quarter
Total	551	556	510	582	532	628	572	720	558	497	600
Houses	388	391	342	392	366	417	412	518	420	327	411
Bloks of flats	97	99	92	88	75	123	97	89	74	78	88
Mixed buildings	26	29	21	30	26	40	24	38	23	24	27
Hostels	1	2	2	5	8	-	1	2	1	1	13
Country houses	39	35	53	62	47	45	36	72	39	67	55
Buildings of institutional households	-	-	-	5	10	3	2	1	1	-	6

¹ Preliminary data.