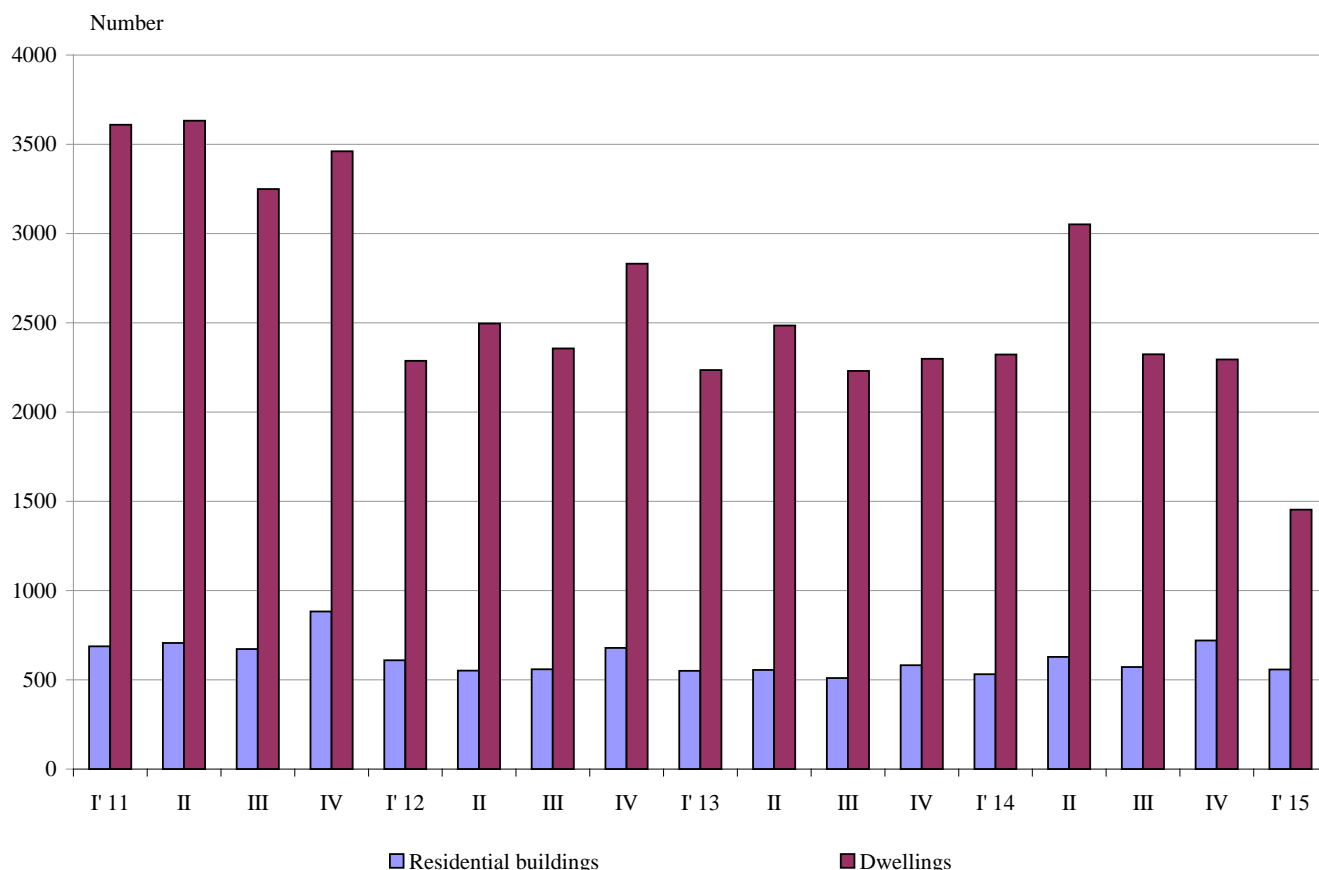




NEWLY BUILT RESIDENTIAL BUILDINGS AND DWELLINGS COMPLETED IN THE FIRST QUARTER OF 2015 (PRELIMINARY DATA)

According to preliminary data of the National Statistical Institute in the first quarter of 2015 the number of newly built residential buildings was 558 (Annex, Table 1). Compared to the first quarter of 2014 they were by 26 more (or by 4.9%) while the newly built dwellings in them were by 37.4% less (Figure 1).

Figure 1. Newly built residential buildings and dwellings completed by quarters



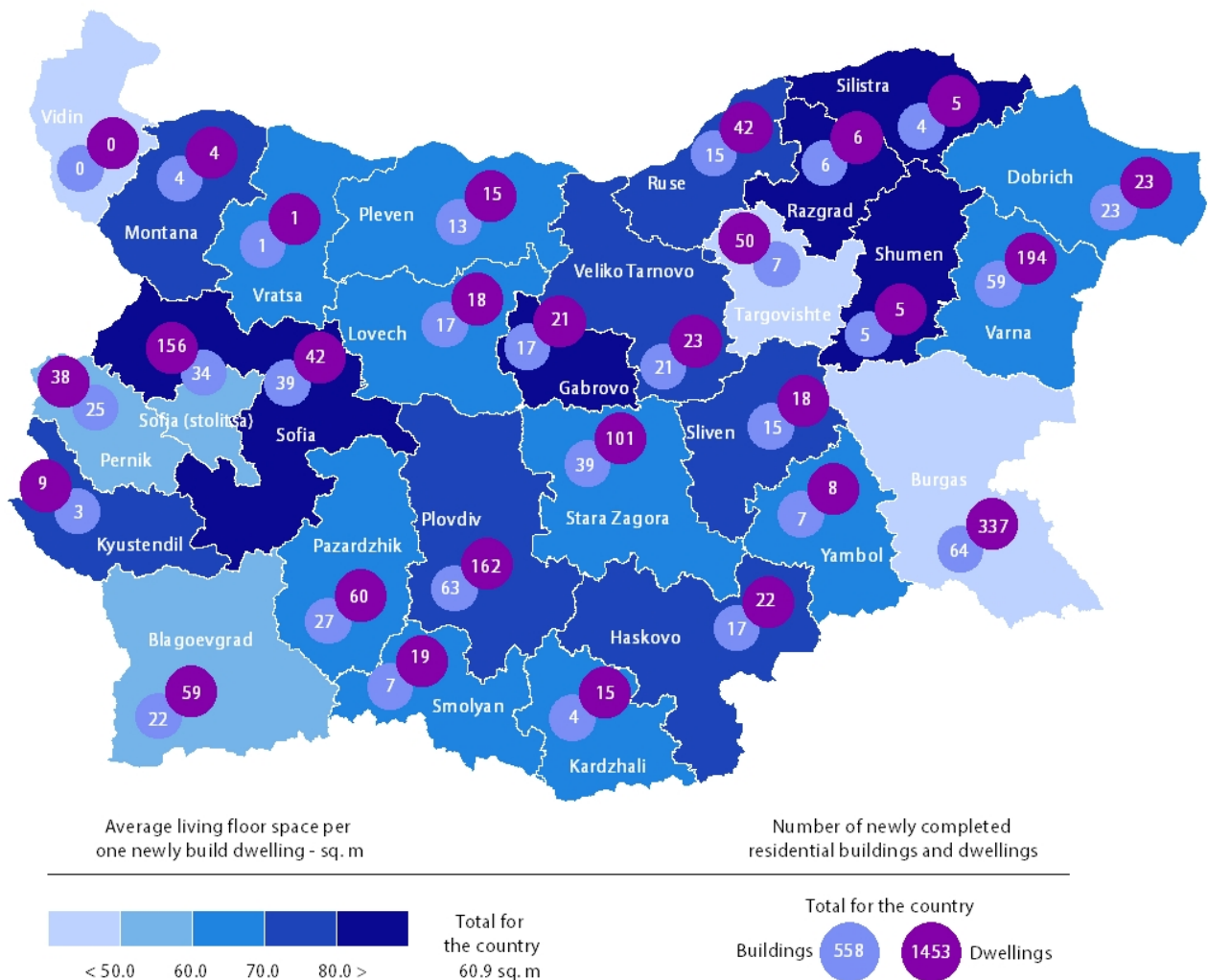
In the first quarter of 2015 67.4% of the newly built residential buildings were with steel-concrete construction, 27.6% with solid structure, 3.6% with “other” and 1.4% with panel.

The newly built residential buildings distribution by type shows that highest is the relative share of houses (75.3%) followed by blocks of flats (13.2%). As compared with the first quarter of 2014 an increase of the number of houses only was observed (Annex, Table 2).



Highest is the number of residential buildings built in district Burgas - 64 buildings with 337 dwellings in them, followed by Plovdiv - 63 residential buildings with 162 dwellings and Varna - 59 residential buildings with 194 dwellings (Figure 2).

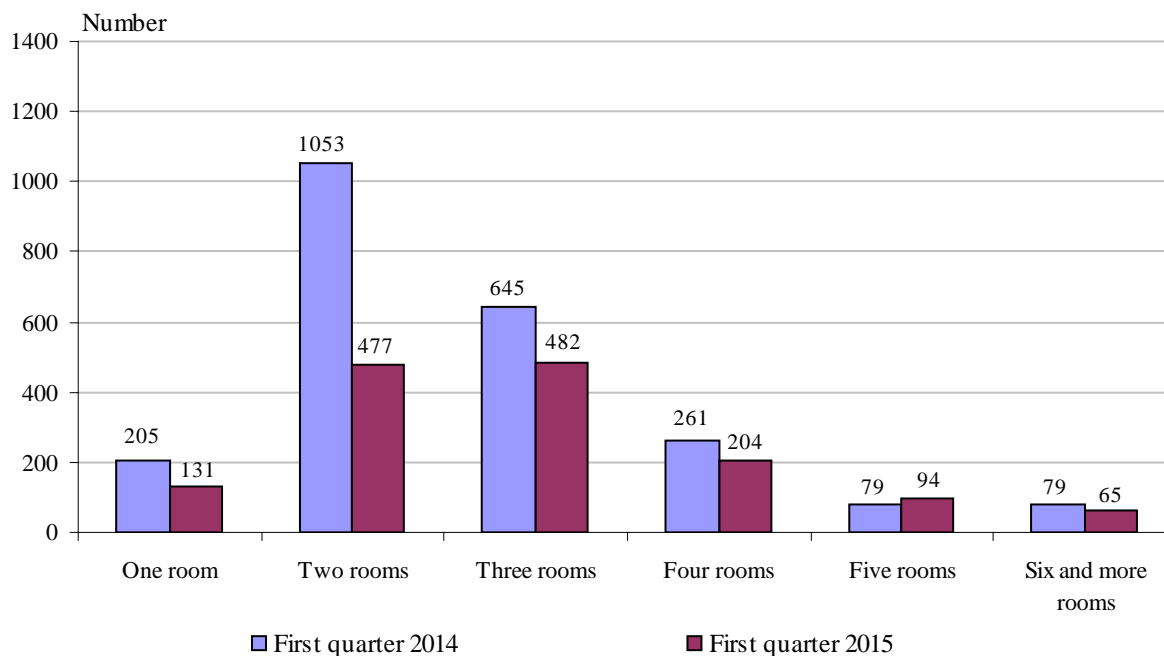
Figure 2. Newly built residential buildings and dwellings completed in first quarter of 2015 by districts





Highest was the number of newly built dwellings with three rooms (33.2%), followed by those with two rooms (32.8%) and lowest is the number of dwellings with six and more rooms (4.5%). Compared to the first quarter of 2014 an increase only of dwellings with five rooms was registered (Figure 3).

Figure 3. Newly built dwellings completed by number of rooms



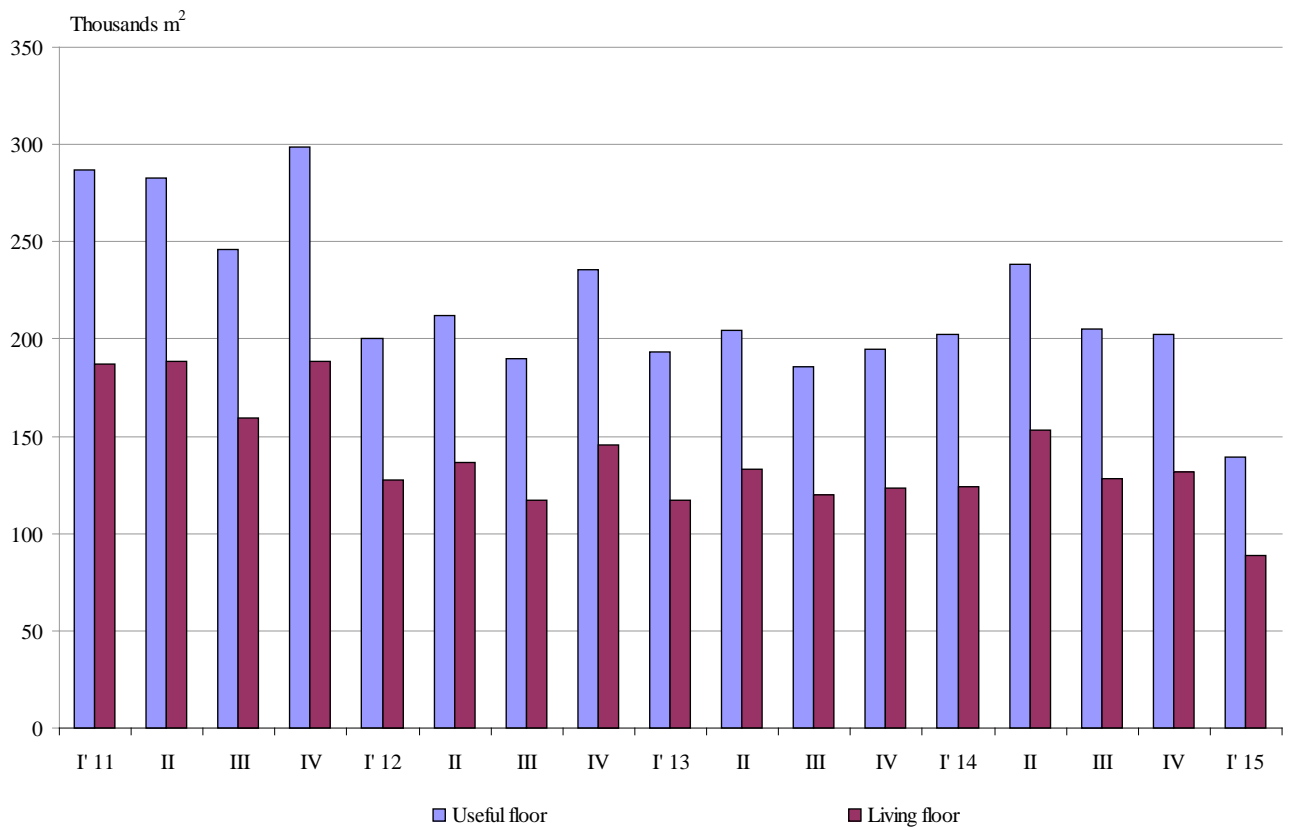
In the first quarter of 2015 **the total useful space** of newly built dwellings was 139.2 thousand sq. m or by 31.2% less than in the same quarter of 2014. **The living floor** space also decreased (by 28.7%) to 88.5 thousand sq. m (Figure 4).

At the same time **the average useful floor space** of newly built dwelling increased from 87.2 sq. m in the first quarter of 2014 to 95.8 sq. m in the same quarter of 2015.

The biggest average useful floor space of a newly built dwelling was recorded in district Shumen - 182.4 sq. m and Gabrovo - 165.3 sq. m, and the smallest one in Targovishte - 67.5 sq. m and Blagoevgrad - 74.4 sq. m.



Figure 4. Total useful floor space and living floor space of newly built dwellings completed by quarters





Methodological notes

The statistical data about the newly built residential buildings and dwellings are prepared on the basis of quarterly reports of the municipal administrations.

In the scope of survey are newly built residential buildings with approved or valid usage license according to Regulation № 2/31.07.2003 of the Ministry of Regional Development and Public Works.

Living floor space is the floor space of living-rooms, bedrooms, recesses for sleeping, dining-rooms, living-rooms, cabinets and libraries of scientists and drawing-rooms but does not include the space of kitchens.

Service floor space is the floor space of rooms and kitchens with less than 4 square meters floor space, vestibules with a portal or other screen, corridors, bathrooms, toilets, larders, hanging closets, other service rooms such as drying-rooms, laundries or balconies regardless their space. The space of kitchens with over 4 sq. m. floor space is shown separately.

The useful floor space of dwelling is a sum of the living-floor-space, the service floor space and the space of the kitchens.

The average useful floor space is a ratio between the useful floor space and the number of dwellings.

Table updated as of 11.05.2015, 15:00 pm

Annex

Table 1

Newly build residential buildings and dwellings completed in the first quarter of 2015¹

Districts	Newly completed residential buildings and dwellings - in numbers		Useful floor area of newly built dwellings - sq. m			
	Buildings	Dwellings	Total	Living floor space	Service floor space	Area of kitchens
Total	558	1453	139224	88493	38550	12181
Blagoevgrad	22	59	4389	3278	584	527
Burgas	64	337	25868	16347	7825	1696
Varna	59	194	20252	12172	7186	894
Veliko Tarnovo	21	23	2995	1753	850	392
Vidin	-	-	-	-	-	-
Vratsa	1	1	124	64	20	40
Gabrovo	17	21	3471	1819	1376	276
Dobrich	23	23	2344	1442	655	247
Kardzhali	4	15	1585	998	389	198
Kyustendil	3	9	819	651	116	52
Lovech	17	18	1879	1096	537	246
Montana	4	4	449	293	70	86
Pazardzhik	27	60	6052	3778	1611	663
Pernik	25	38	3073	1954	681	438
Pleven	13	15	1552	928	428	196
Plovdiv	63	162	17718	12747	2872	2099
Razgrad	6	6	797	499	227	71
Ruse	15	42	5312	2988	1875	449
Silistra	4	5	817	414	369	34
Sliven	15	18	2279	1317	821	141
Smolyan	7	19	2019	1246	618	155
Sofia	39	42	5659	3431	1513	715
Sofia (stolitsa)	34	156	13782	8012	4329	1441
Stara Zagora	39	101	8648	6551	1571	526
Targovishte	7	50	3377	1994	1231	152
Haskovo	17	22	2346	1672	352	322
Shumen	5	5	912	555	307	50
Yambol	7	8	706	494	137	75

¹ Preliminary data.



Table 2

Newly built residential buildings by type of building

	2013				2014				(Number)
	I quarter	II quarter	III quarter	IV quarter	I quarter	II quarter	III quarter	IV quarter	2015 ¹ I quarter
Total	551	556	510	582	532	628	572	720	558
Houses	388	391	342	392	366	417	412	518	420
Bloks of flats	97	99	92	88	75	123	97	89	74
Mixed buildings	26	29	21	30	26	40	24	38	23
Hostels	1	2	2	5	8	-	1	2	1
Country houses	39	35	53	62	47	45	36	72	39
Buildings of institutional households	-	-	-	5	10	3	2	1	1

¹ Preliminary data.