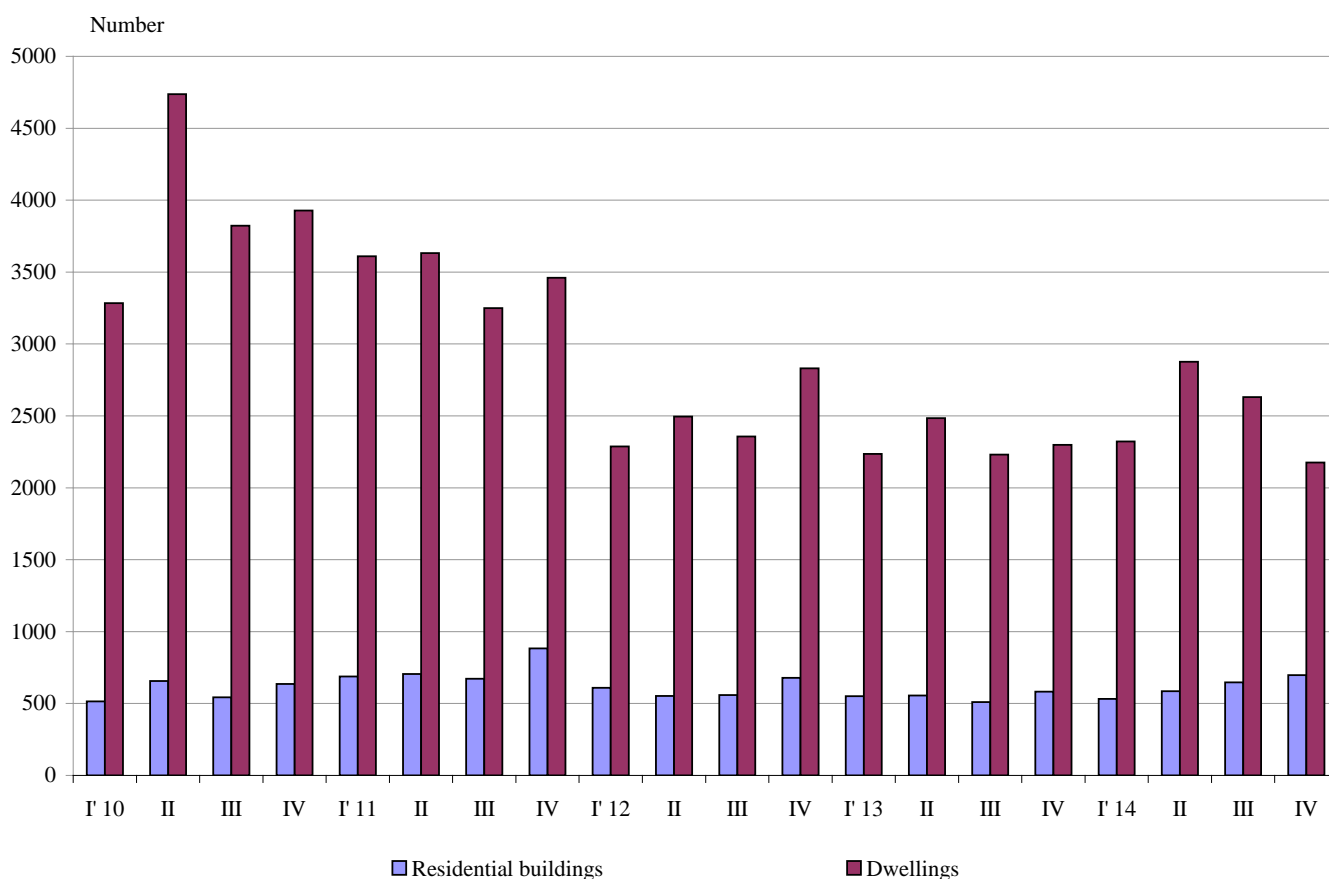




## NEWLY BUILT RESIDENTIAL BUILDINGS AND DWELLINGS COMPLETED IN THE FOURTH QUARTER OF 2014 (PRELIMINARY DATA)

According to the preliminary data of the National Statistical Institute in the fourth quarter of 2014 the number of newly built residential buildings was 698 (Annex, Table 1). Compared to the fourth quarter of 2013 they were by 116 more (or by 19.9%) while the newly built dwellings in them were by 5.4% less (Figure 1).

**Figure 1. Newly built residential buildings and dwellings completed by quarters**



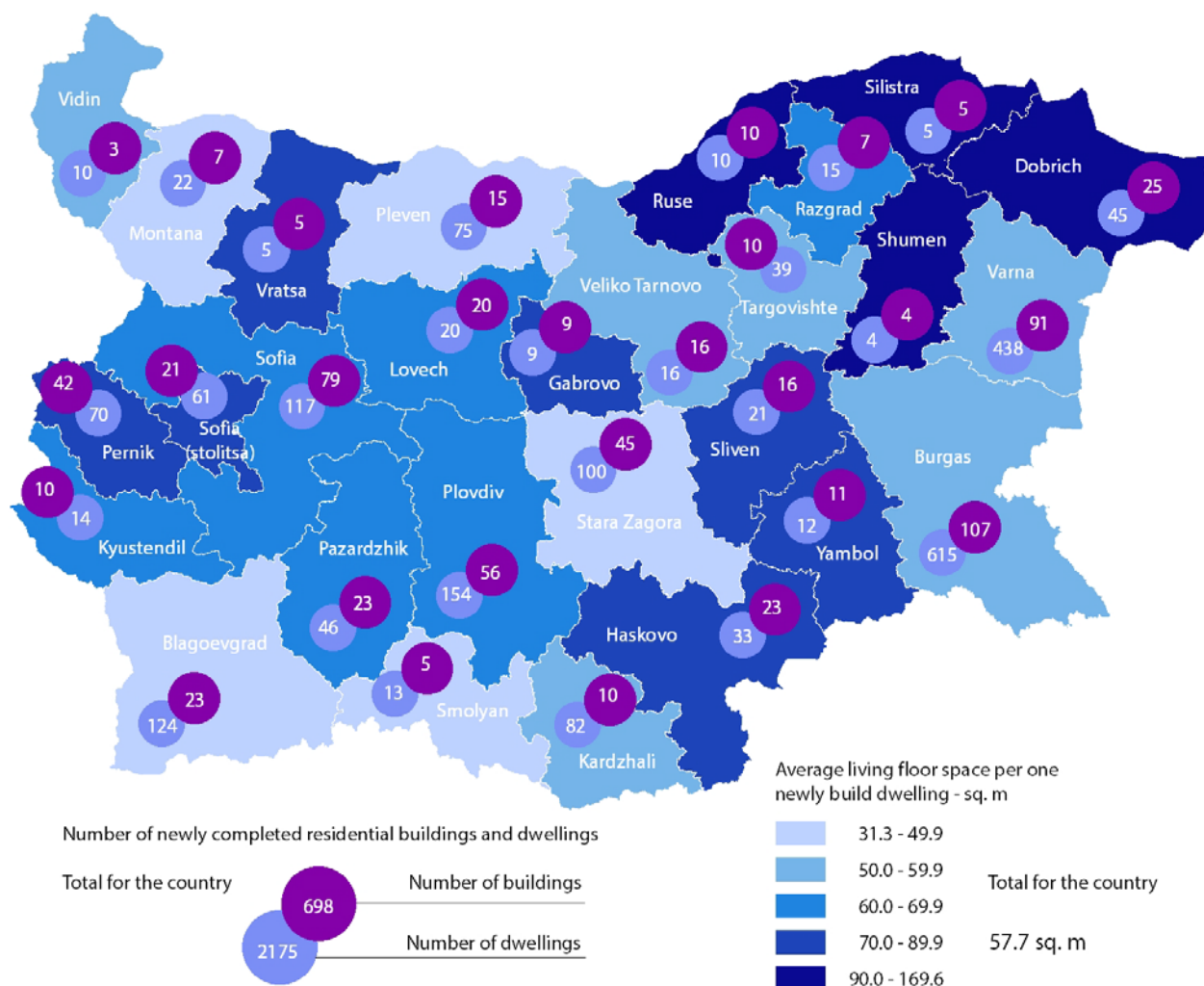
In the fourth quarter of 2014 74.3% of newly built residential buildings were with steel-concrete construction, 23.1% with solid structure, 1.3% with panel and 1.3% with 'other'. In comparison with the same quarter of 2013 a decrease of share with 'other' structure of buildings was observed only.

According to newly built residential buildings distribution by type, with the highest relative share were houses (72.4%) followed by blocks of flats (12.2%). As compared with the fourth quarter of 2013 the

number of houses, mixed buildings and country houses rose while buildings of institutional households, block of flats and hostels dropped (Annex, Table 2).

The highest number of residential buildings has been built in the Burgas district - 107 buildings with 615 dwellings in them, in the Varna district - 91 residential buildings with 438 dwellings and in the Sofia district - 79 residential buildings with 117 dwellings (Figure 2).

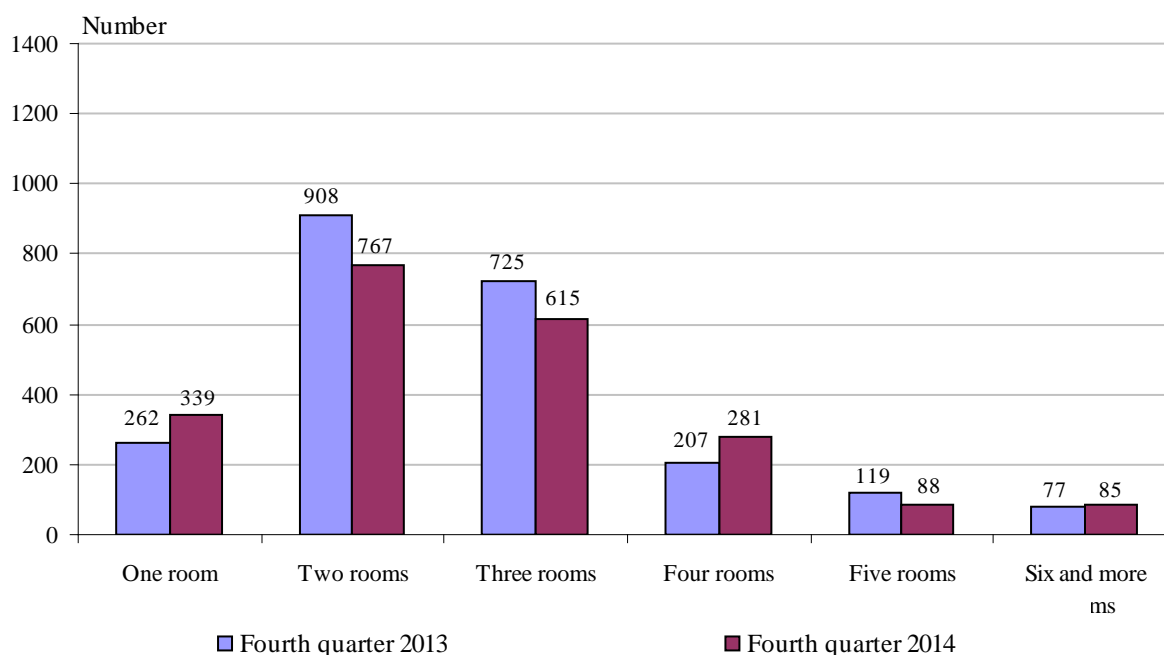
**Figure 2. Newly built residential buildings and dwellings completed in the fourth quarter of 2014 by districts**





The largest number of newly built dwellings was with two rooms (35.3%), followed by those with three rooms (28.3%). Compared to the fourth quarter of 2013 an increase of dwellings with four and six and more rooms was registered only. The structure of the housing fund with prevailing share of dwelling with two and three rooms remained unchanged (Figure 3).

**Figure 3. Newly built dwellings completed by number of rooms**



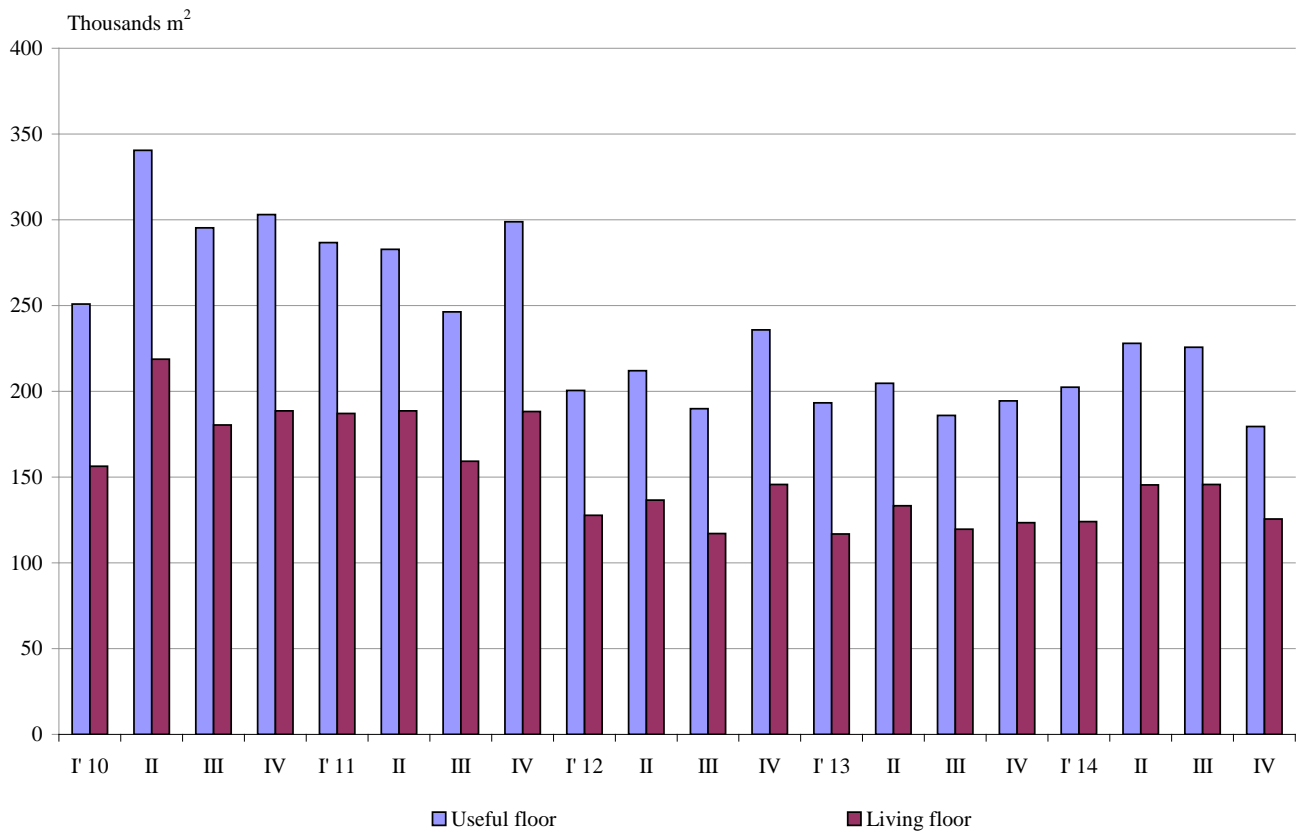
In the fourth quarter of 2014 **the total useful space** of the newly built dwellings was 196.0 thousand sq. m or by 0.8% more than in the same quarter of 2013. **The living floor** space also increased (by 1.7%) and reached 125.6 thousand sq. m (Figure 4).

**The average useful floor space** of the newly built dwelling increased from 84.6 sq. m in the fourth quarter of 2013 to 90.1 sq. m in the same quarter of 2014.

The biggest average useful floor space of a newly built dwelling was recorded in the Ruse district - 264.6 sq. m and Silistra district - 227.0 sq. m, and the smallest one in the Montana district - 52.3 sq. m and Blagoevgrad district - 59.1 sq. m.



**Figure 4. Total useful floor space and living floor space of the newly built dwellings completed by quarters**





## Methodological notes

The statistical data about the newly built residential buildings and dwellings was developed on the basis of the quarterly reports obtained from the municipal administrations.

In the scope of the survey were the newly built residential buildings with approved record of handover of Form 16 or a valid usage license according to Regulation № 2/31.07.2003 of the Ministry of Regional Development and Public Works.

**Living floor space** is the floor space of living-rooms, bedrooms, recesses for sleeping, dining-rooms, the rooms for day-stay, cabinets and libraries of scientists and drawing-rooms but does not include the space of the kitchens.

**Service floor space** is the floor space of the rooms and kitchens with less than 4 square meters floor space, vestibules with a portal or an other screen, corridors, bathrooms, toilets, larders, hanging closets, other service rooms such as drying-rooms, laundries or balconies not depending on their space. The space of kitchens with over 4 sq. m. floor space is shown separately.

**The useful floor space** of the dwelling is sum of the living-floor-space, service floor space and the space of the kitchens.



Annex

Table 1

Newly build residential buildings and dwellings completed in the fourth quarter of 2014<sup>1</sup>

Districts	Newly completed residential buildings and dwellings - in numbers		Useful floor area of newly built dwellings - sq. m			
	Buildings	Dwellings	Total	Living floor space	Service floor space	Area of kitchens
<b>Total</b>	<b>698</b>	<b>2175</b>	<b>195954</b>	<b>125565</b>	<b>53177</b>	<b>17212</b>
Blagoevgrad	23	124	7334	5951	685	698
Burgas	107	615	47072	31440	12049	3583
Varna	91	438	36033	23021	11131	1881
Veliko Tarnovo	16	16	1477	911	386	180
Vidin	3	10	903	507	322	74
Vratsa	5	5	640	426	141	73
Gabrovo	9	9	1320	670	553	97
Dobrich	25	45	6830	4504	1602	724
Kardzhali	10	82	7966	4752	2044	1170
Kyustendil	10	14	1420	843	498	79
Lovech	20	20	2024	1273	523	228
Montana	7	22	1151	689	323	139
Pazardzhik	23	46	4998	2952	1429	617
Pernik	42	70	6976	5177	1116	683
Pleven	15	75	5492	3461	1475	556
Plovdiv	56	154	16674	10108	4777	1789
Razgrad	7	15	1453	916	360	177
Ruse	10	10	2646	1696	745	205
Silistra	5	5	1135	725	337	73
Sliven	16	21	3107	1701	1150	256
Smolyan	5	13	798	514	198	86
Sofia	79	117	12524	7750	3184	1590
Sofia (stolitsa)	21	61	8197	4325	3289	583
Stara Zagora	45	100	6772	4963	1080	729
Targovishte	10	39	3567	1992	1314	261
Haskovo	23	33	5410	2943	1959	508
Shumen	4	4	622	361	207	54
Yambol	11	12	1413	994	300	119

<sup>1</sup> Preliminary data.



**Table 2**

**Newly built residential buildings by type of building**

(Number)

	2012				2013				2014 <sup>1</sup>			
	I quarter	II quarter	III quarter	IV quarter	I quarter	II quarter	III quarter	IV quarter	I quarter	II quarter	III quarter	IV quarter
<b>Total</b>	<b>609</b>	<b>552</b>	<b>559</b>	<b>679</b>	<b>551</b>	<b>556</b>	<b>510</b>	<b>582</b>	<b>532</b>	<b>585</b>	<b>647</b>	<b>698</b>
Houses	446	359	381	455	388	391	342	392	367	389	462	505
Blocks of flats	83	93	100	126	97	99	92	88	75	112	112	85
Mixed buildings	28	35	28	43	26	29	21	30	25	39	27	37
Hostels	1	-	-	2	1	2	2	5	8	-	1	2
Country houses	51	64	48	52	39	35	53	62	47	42	43	68
Buildings of institutional households	-	1	2	1	-	-	-	5	10	3	2	1

<sup>1</sup> Preliminary data.