



MAIN LABOUR FORCE SURVEY RESULTS FOR THE THIRD QUARTER OF 2017

Main labour market indicators for the third quarter of 2017

The activity rate for population aged 15 - 64 was 72.8%, by 3.7 percentage points higher compared to the third quarter of 2016.

The employment rate for population aged 15 - 64 was 68.5%, up by 4.3 percentage points from the same quarter of 2016.

The unemployment rate was 5.8%, by 1.2 percentage points lower compared to the third quarter of 2016.

There were 1 250.0 thousand **economically inactive persons aged 15 - 64**, accounting for 27.2% of population in the same age group. Of them 103.0 thousand (8.2%) were **discouraged persons**.

Employment

In the third quarter of 2017 there were 3 225.0 thousand **employed persons aged 15 years and over**, of whom 1 719.9 thousand men and 1 505.1 thousand women. The share of employed persons in the total population aged 15 years and over was 53.2%, up by 3.3 percentage points compared to the third quarter of 2016. In employment were 59.1% of men and 47.8% of women in the age group concerned.

In the third quarter of 2017, in the service sector worked 2 019.9 thousand persons, representing 62.6% of all employed persons, in the industry sector worked 962.9 thousand persons (29.9% of all employed), while in agriculture, forestry and fishing worked 242.3 thousand (7.5%).

Of all employed persons 3.7% (118.5 thousand) were employers, 7.5% (240.6 thousand) were self-employed persons without employees, 88.0% (2 839.6 thousand) were employees and 0.8% (26.4 thousand) were unpaid family workers. Of all employees 2 154.1 thousand persons (75.9%), worked in private sector while 685.5 thousand (24.1%) worked in public sector.

Of all employees, 153.6 thousand persons (5.4%) had temporary job.

In the third quarter of 2017 the employment in specific age groups was as follows:

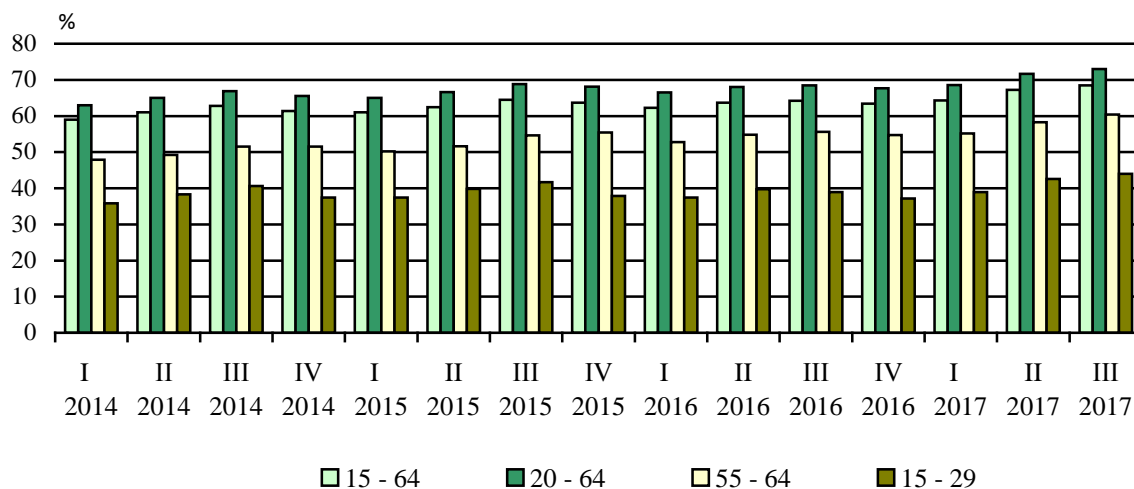
There were 3 142.0 thousand **employed persons aged from 15 to 64 years**. The employment rate for the same age group was 68.5% (72.2% for men and 64.7% for women).

The employment rate for the age group 15 - 29 years was 44.0% (49.6% for men and 38.1% for women).

The employment rate for the age group 20 - 64 years was 73.0%, 76.9% and 69.0% for men and women respectively. This rate was by 4.5 percentage points higher than in the third quarter of 2016. It increased by 4.9 percentage points for men and by 4.0 percentage points for women.

There were 590.7 thousand **employed persons aged from 55 to 64 years**, representing 60.4% of population in the same age group (64.5% of men and 56.7% of women). In comparison with a year ago, the employment rate (55 - 64 years) went up by 4.8 percentage points, as the increase for men and women was by 5.1 and 4.6 percentage points respectively.

Figure 1. Employment rate by age group and by quarter



Unemployment

In the third quarter of 2017 there were 200.2 thousand **unemployed persons** and the **unemployment rate** was 5.8%. In comparison with the third quarter of 2016 the number of unemployed persons went down by 12.6% and the unemployment rate declined by 1.2 percentage points.

Over the same period the unemployment rate decreased by 1.3 percentage points for men and by 1.0 percentage point for women achieving 6.1% and 5.5% respectively. In the third quarter of 2017 there were 112.4 thousand unemployed men (56.2% of all unemployed persons) and 87.8 thousand unemployed women (43.8%).

Among all unemployed persons 17.6% had higher level of educational attainment, 49.8% had completed upper secondary education and 32.6% had at most lower secondary education. The unemployment rate by level of educational attainment was as follows: 3.4% for higher education, 5.1% for upper secondary and 15.0% for lower than upper secondary education.

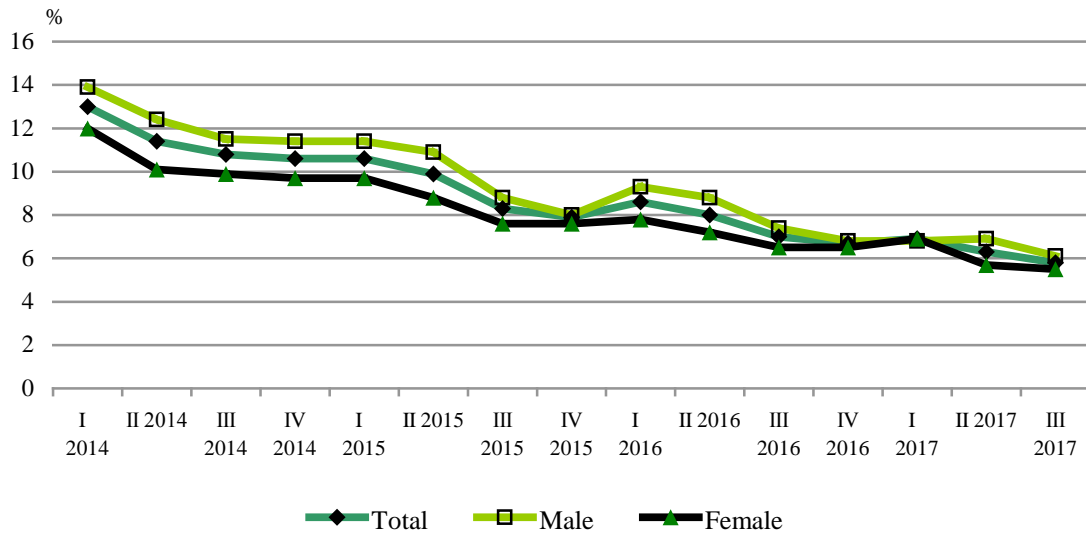
In the third quarter of 2017 there were 109.6 thousand **long-term unemployed persons (unemployed for one or more years)**, representing 54.7% of all unemployed persons. **The long-term unemployment rate** was 3.2%, down by 1.1 percentage points from the third quarter of 2016. The long-term unemployment rate was 3.3% for men and 3.1% for women.

Of all unemployed people 37.4 thousand (18.7%) were looking for a first job.

In the third quarter of 2017 the **unemployment rate for the age group 15 - 29 years** was 9.9%, by 1.9 percentage points lower than in a year earlier. The unemployment rate for men (15 - 29 years) decreased by 2.3 percentage points and that for women - by 1.3 percentage points, achieving 10.3% for men and 9.4% for women.



Figure 2. Unemployment rate by sex and by quarter





Methodological notes

The Labour Force Survey (LFS) is a continuous sample survey providing quarterly and annual data on the economic activity of the population aged 15 and over. The survey covers non-institutional households.

Reference period - the characteristics of each interviewee refer to his/her status during a defined calendar week.

Economically active population (labour force) comprises all employed and unemployed persons.

Employed are persons aged 15 and over who during the reference period:

- performed some work for at least one hour for pay in cash or in kind or other income;
- did not work but had a job or an enterprise, a business from which they were temporarily absent due to illness, annual leave, full-paid maternity leave, parental leave, strike or another labour dispute, etc.

Unemployed are persons aged 15 to 74 who:

- did not work at all during the reference period;
- were actively seeking work within the preceding four weeks, including the reference one, or have found a new job or business that is expected to start within 3 months following the reference period;
- were available to start working within two weeks following the reference period.

Long-term unemployed are persons who have been unemployed for one or more years.

Economically inactive population (persons not in the labour force) includes persons aged 15 and over who were neither employed, nor unemployed during the reference period.

Discouraged persons are persons not in the labour force who want to work but they do not actively look for a job, because they do not believe they will find one.

Activity rate - ratio between the economically active population and the total population of the same age group.

Employment rate - ratio between the employed population and the total population of the same age group.

Unemployment rate - ratio between the unemployed persons and the economically active population.

Long-term unemployment rate - ratio between the long-term unemployed persons and the economically active population.

For the weighting of the results of the survey for the third quarter of 2017 preliminary data on population as of 30 June 2017 (excluding population living in institutional households) were used.

Like all sample surveys data from the Labour Force Survey are subject of errors due to the sample (stochastic errors). The relative standard errors for the main LFS indicators for the third quarter of 2017 are as follows:

- total number of employed persons - 1.4%;
- total number of unemployed persons - 4.5%;



- unemployment rate - 4.3%.

Because of the rounding of the figures some of the totals (rows and columns) are not equal to the sum of the components.

More detailed data from the Labour Force Survey could be found on the NSI website - www.nsi.bg, section 'Labour Market', Labour Force Survey.



Annex

Table 1

Main labour market indicators, third quarter of 2016 and 2017

	Third quarter 2016	Third quarter 2017	Change (third quarter 2017 minus third quarter 2016)
Total			
Activity rate (15 - 64) - %	69.1	72.8	3.7
Employed persons aged 15 and over - in thousands	3052.7	3225.0	172.3
Employed persons aged 15 - 64 - in thousands	2988.1	3142.0	153.9
Employed persons aged 15 - 24 - in thousands	131.3	162.9	31.6
Employed persons aged 15 - 29 - in thousands	445.5	484.9	39.4
Employed persons aged 20 - 64 - in thousands	2975.2	3124.3	149.1
Employed persons aged 55 - 64 - in thousands	547.5	590.7	43.2
Employment rate (15 and over) - %	49.9	53.2	3.3
Employment rate (15 - 64) - %	64.2	68.5	4.3
Employment rate (15 - 24) - %	19.6	25.2	5.6
Employment rate (15 - 29) - %	38.9	44.0	5.1
Employment rate (20 - 64) - %	68.5	73.0	4.5
Employment rate (55 - 64) - %	55.6	60.4	4.8
Unemployed persons - total - in thousands	229.0	200.2	-28.8
Unemployed persons aged 15 - 64 - in thousands	227.3	197.5	-29.8
Unemployed persons aged 15 - 24 - in thousands	30.4	26.3	-4.1
Unemployed persons aged 15 - 29 - in thousands	59.6	53.4	-6.2
Unemployment rate - %	7.0	5.8	-1.2
Unemployment rate (15 - 64) - %	7.1	5.9	-1.2
Unemployment rate (15 - 24) - %	18.8	13.9	-4.9
Unemployment rate (15 - 29) - %	11.8	9.9	-1.9
Long-term unemployment rate - %	4.3	3.2	-1.1
Discouraged persons aged 15 and over - in thousands	159.3	107.4	-51.9
Discouraged persons aged 15 - 64 - in thousands	157.6	103.0	-54.6



Table 1

Main labour market indicators, third quarter of 2016 and 2017

(Continued)

	Third quarter 2016	Third quarter 2017	Change (third quarter 2017 minus third quarter 2016)
Male			
Activity rate (15 - 64) - %	73.0	76.9	3.9
Employed persons aged 15 and over - in thousands	1623.7	1719.9	96.2
Employed persons aged 15 - 64 - in thousands	1584.6	1672.8	88.2
Employed persons aged 15 - 24 - in thousands	77.0	94.7	17.7
Employed persons aged 15 - 29 - in thousands	258.4	280.6	22.2
Employed persons aged 20 - 64 - in thousands	1576.0	1660.5	84.5
Employed persons aged 55 - 64 - in thousands	278.5	301.0	22.5
Employment rate (15 and over) - %	55.2	59.1	3.9
Employment rate (15 - 64) - %	67.5	72.2	4.7
Employment rate (15 - 24) - %	22.3	28.5	6.2
Employment rate (15 - 29) - %	44.0	49.6	5.6
Employment rate (20 - 64) - %	72.0	76.9	4.9
Employment rate (55 - 64) - %	59.4	64.5	5.1
Unemployed persons - total - in thousands	130.1	112.4	-17.7
Unemployed persons aged 15 - 64 - in thousands	128.8	110.7	-18.1
Unemployed persons aged 15 - 24 - in thousands	18.5	17.5	-1.0
Unemployed persons aged 15 - 29 - in thousands	37.2	32.3	-4.9
Unemployment rate - %	7.4	6.1	-1.3
Unemployment rate (15 - 64) - %	7.5	6.2	-1.3
Unemployment rate (15 - 24) - %	19.4	15.6	-3.8
Unemployment rate (15 - 29) - %	12.6	10.3	-2.3
Long-term unemployment rate - %	4.7	3.3	-1.4
Discouraged persons aged 15 and over - in thousands	88.0	56.6	-31.4
Discouraged persons aged 15 - 64 - in thousands	87.0	54.5	-32.5



Table 1

Main labour market indicators, third quarter of 2016 and 2017

(Continued and end)

	Third quarter 2016	Third quarter 2017	Change (third quarter 2017 minus third quarter 2016)
Female			
Activity rate (15 - 64) - %	65.2	68.5	3.3
Employed persons aged 15 and over - in thousands	1429.1	1505.1	76.0
Employed persons aged 15 - 64 - in thousands	1403.5	1469.3	65.8
Employed persons aged 15 - 24 - in thousands	54.3	68.2	13.9
Employed persons aged 15 - 29 - in thousands	187.1	204.3	17.2
Employed persons aged 20 - 64 - in thousands	1399.1	1463.8	64.7
Employed persons aged 55 - 64 - in thousands	269.0	289.7	20.7
Employment rate (15 and over) - %	45.0	47.8	2.8
Employment rate (15 - 64) - %	60.9	64.7	3.8
Employment rate (15 - 24) - %	16.6	21.7	5.1
Employment rate (15 - 29) - %	33.6	38.1	4.5
Employment rate (20 - 64) - %	65.0	69.0	4.0
Employment rate (55 - 64) - %	52.1	56.7	4.6
Unemployed persons - total - in thousands	98.9	87.8	-11.1
Unemployed persons aged 15 - 64 - in thousands	98.4	86.8	-11.6
Unemployed persons aged 15 - 24 - in thousands	11.8	8.8	-3.0
Unemployed persons aged 15 - 29 - in thousands	22.3	21.1	-1.2
Unemployment rate - %	6.5	5.5	-1.0
Unemployment rate (15 - 64) - %	6.6	5.6	-1.0
Unemployment rate (15 - 24) - %	17.9	11.4	-6.5
Unemployment rate (15 - 29) - %	10.7	9.4	-1.3
Long-term unemployment rate - %	3.9	3.1	-0.8
Discouraged persons aged 15 and over - in thousands	71.4	50.8	-20.6
Discouraged persons aged 15 - 64 - in thousands	70.5	48.5	-22.0