



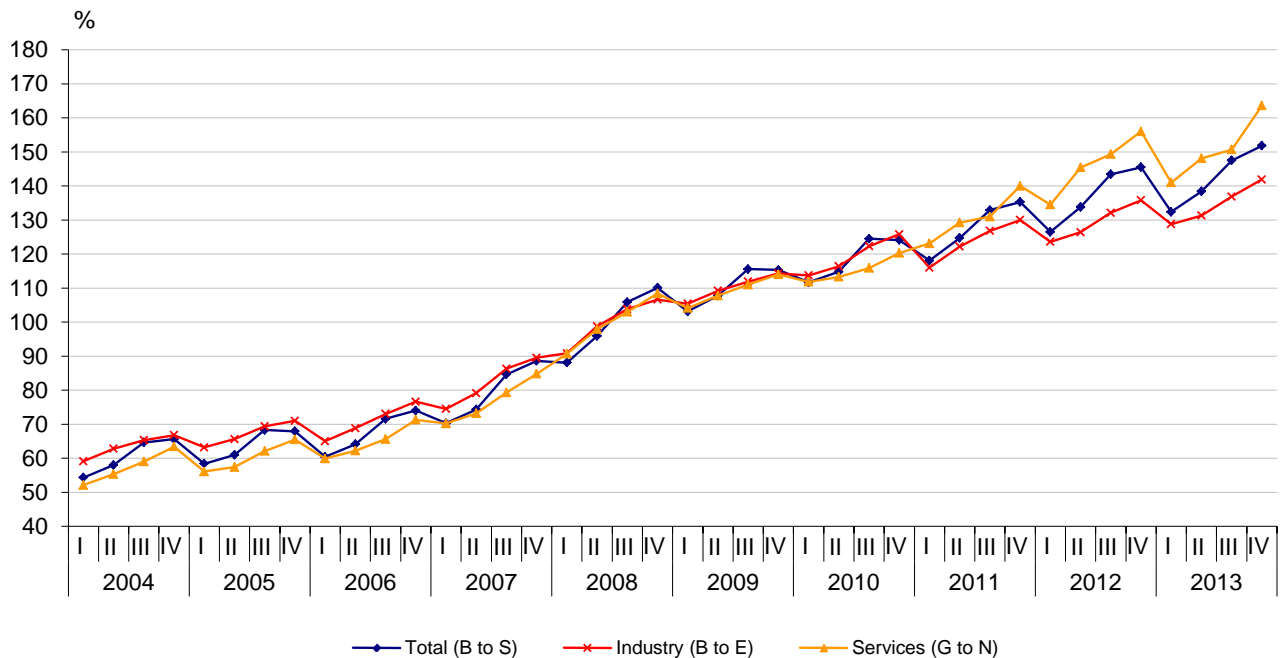
QUARTERLY LABOUR COST INDEX FOURTH QUARTER OF 2013

Preliminary data of the NSI for the fourth quarter of 2013 indicated that the total hourly labour cost has risen by 4.3% compared to the fourth quarter of 2012. The total hourly labour cost grew by 4.4% in industry and by 4.8% in services. In construction the total hourly labour costs rose by 4.2%.

The breakdown by economic activities showed that the highest annual growths in total labour costs were recorded in 'Wholesale and retail trade; repair of motor vehicles and motorcycles' - 12.3%, 'Mining and quarrying' - 8.9% and 'Education' - 8.4%. The highest decrease in total labour costs was observed in 'Arts, entertainment and recreation' by 12.8% and 'Other service activities' by 8.8%.

In the structure of the total labour costs, the wages and salaries costs per hour worked have grown by 4.0% in comparison with a year earlier, while the other (non-wage) costs rose by 6.2%. Among the economic activities in the fourth quarter of 2013 compared to the fourth quarter of 2012 the growth rate of wages and salaries component ranged from (-14.3%) in 'Arts, entertainment and recreation' to 11.7% in 'Wholesale and retail trade; repair of motor vehicles and motorcycles'.

**Figure 1. Total labour cost index
(Working day adjusted, 2008 = 100)**



Methodological notes

Labour Cost Index is a short-term indicator measuring the quarterly development of hourly labour costs incurred by the employers as a result of engaging the labour work force. The Quarterly Survey on employees, hours worked, wages and salaries and other expenditures paid by the employer is the main source used for the labour cost index data calculation.

Labour cost index (LCI) is defined as a Laspeyres index of labour costs per hour worked. Since first quarter of 2009 it is calculated broken down by economic activities at section level according to the new NACE Rev.2 classification and with a reference year 2008=100. Indices are based on Regulation (EC) 450/2003 of the European Parliament and of the Council according to which requirements Labour costs indices shall be provided separately for the following three labour costs categories:

Total labour costs (TOT), which includes wages and salaries paid by the employer in cash or in kind, employers' actual and imputed social contribution plus taxes regarded as labour costs;

Wage and salary costs (WAG) covers wages and salaries paid in cash or in kind;

Labour costs other than wages and salaries (OTH – non-wage costs) include the employers' actual and imputed social contribution plus taxes regarded as labour costs;

Economic activity coverage (NACE Rev.2):

- **Total (sections B to S)** - Mining and quarrying (B), Manufacturing (C), Electricity, gas, steam and air conditioning supply (D), Water supply, sewerage, waste management and remediation activities (E), Construction (F), Wholesale and retail trade; repair of motor vehicles and motorcycles (G), Transportation and storage (H), Accommodation and food service activities (I), Information and communication (J), Financial and insurance activities (K), Real estate activities (L), Professional, scientific and technical activities (M), Administrative and support service activities (N), Public administration and defence; compulsory social security (O), Education (P), Human health and social work activities (Q), Arts, entertainment and recreation (R), Other service activities (S);
- **Industry (section B to E)** - Mining and quarrying (B), Manufacturing (C), Electricity, gas, steam and air conditioning supply (D), Water supply, sewerage, waste management and remediation activities (E);
- **Services (sections G to N)** - Wholesale and retail trade; repair of motor vehicles and motorcycles (G), Transportation and storage (H), Accommodation and food service activities (I), Information and communication (J), Financial and insurance activities (K), Real estate activities (L), Professional, scientific and technical activities (M), Administrative and support service activities (N).

More methodological information on the labour cost index and data could be found on NSI official web page – <http://www.nsi.bg>

Annex

Table 1.

Hourly labour cost index for the period fourth quarter of 2011 - fourth quarter of 2013
(Working day adjusted)

(Percentage change compared to corresponding period of the previous year)

Code NCEA - 2008 ¹	Economic activities	q4 2011			q1 2012 ²			q2 2012 ²			q3 2012 ²			q4 2012 ²			q1 2013 ²			q2 2013 ²			q3 2013 ²			q4 2013 ²		
		TOT	WAG	OTH	TOT	WAG	OTH	TOT	WAG	OTH	TOT	WAG	OTH	TOT	WAG	OTH	TOT	WAG	OTH	TOT	WAG	OTH	TOT	WAG	OTH	TOT	WAG	OTH
B to S	All NACE branches except agriculture, fishing, private households with employed persons	9.0	8.9	9.8	7.1	8.2	1.7	7.3	8.3	2.7	7.9	8.7	3.9	7.5	8.4	3.1	4.7	4.5	5.3	3.4	3.2	4.7	2.8	2.6	3.7	4.3	4.0	6.2
B to E	Industry (except construction)	3.3	2.9	5.0	6.6	8.1	0.7	3.4	3.9	1.0	4.1	4.9	0.4	4.5	4.9	2.1	4.2	3.8	5.1	3.8	3.7	3.9	3.6	3.7	3.8	4.4	4.4	4.6
G to N	Services (excluding public administration)	16.3	16.4	16.4	9.3	10.4	3.4	12.6	13.5	7.2	14.0	14.8	9.6	11.5	12.4	6.4	4.8	4.8	5.1	1.8	1.8	2.6	0.9	0.7	1.8	4.8	4.2	8.3
B	Mining and quarrying	9.0	10.1	5.0	12.8	14.9	5.7	5.4	6.5	1.5	9.6	10.2	7.4	0.4	0.2	1.4	0.5	-0.3	3.4	1.5	0.6	5.7	-0.3	-2.5	8.0	8.9	7.3	16.4
C	Manufacturing	4.5	4.2	6.0	7.1	8.3	1.9	5.1	5.5	3.0	4.8	5.5	1.5	5.8	6.1	3.6	5.1	4.8	5.7	4.0	4.0	3.6	4.4	4.8	2.9	5.1	5.2	4.2
D	Electricity, gas, steam and air conditioning supply	-5.6	-6.7	-0.6	1.6	4.5	-8.5	-5.2	-4.4	-8.8	-2.2	0.1	-11.1	-1.2	-0.2	-5.2	2.0	1.3	3.8	4.7	4.1	5.0	1.8	1.0	5.1	-1.4	-1.6	-1.5
E	Water supply, sewerage, waste management and remediation activities	3.3	2.4	8.4	3.3	4.2	0.5	1.7	2.1	0.2	2.9	1.8	7.0	6.9	7.7	3.4	3.6	3.3	4.0	2.8	2.5	2.8	3.7	3.7	5.0	2.9	2.6	4.0
F	Construction	7.7	8.3	5.1	2.4	3.3	-1.9	2.2	3.1	-2.3	1.7	1.9	0.8	-0.5	-0.1	-2.0	-0.4	-0.6	0.8	4.9	4.5	7.6	4.3	4.2	4.6	4.2	4.1	5.0
G	Wholesale and retail trade; repair of motor vehicles and motorcycles	25.9	26.1	25.9	7.4	8.7	1.0	15.7	16.8	9.9	20.0	20.4	17.4	16.5	16.7	14.5	5.6	5.1	7.6	3.5	3.6	3.1	1.3	1.3	1.1	12.3	11.7	14.2
H	Transportation and storage	2.9	1.4	10.3	4.6	5.0	3.3	3.9	4.1	2.9	5.7	7.0	-0.1	1.7	4.2	-8.8	0.9	1.8	-4.4	1.4	2.6	-3.3	1.0	0.4	3.9	-0.3	-0.8	2.9
I	Accommodation and food service activities	8.0	7.8	8.8	13.7	14.5	9.5	15.3	16.3	10.7	17.9	18.1	17.0	18.2	18.2	18.0	11.7	12.4	7.6	9.1	9.3	7.9	2.6	2.4	3.6	4.8	4.9	4.0
J	Information and communication	28.3	29.8	21.0	7.5	7.5	4.0	11.3	12.5	3.4	8.4	9.1	3.9	9.1	10.1	4.0	10.0	10.8	7.7	-0.1	-0.8	12.4	2.5	2.2	3.6	0.5	-1.0	15.0
K	Financial and insurance activities	5.4	4.5	10.6	5.4	6.0	1.7	7.7	7.9	6.1	5.7	6.0	3.5	0.3	0.7	-1.8	4.4	3.7	8.3	-0.2	-0.5	0.8	0.7	0.7	0.9	4.5	4.5	4.2
L	Real estate activities	-6.3	-6.8	-3.6	25.5	28.2	10.6	32.2	36.7	9.3	31.4	35.0	12.8	36.1	39.0	20.1	1.0	1.0	1.1	-5.6	-5.6	-6.3	-1.6	-1.5	-2.8	-5.0	-5.3	-3.1
M	Professional, scientific and technical activities	23.2	24.5	15.4	22.2	25.3	4.3	17.7	19.2	8.9	18.1	20.1	6.4	16.0	17.7	5.2	0.5	-0.5	7.6	0.6	0.0	3.0	-2.4	-2.9	1.1	-3.6	-4.5	2.3
N	Administrative and support service activities	10.0	10.1	9.5	11.8	12.4	8.0	9.3	9.9	5.9	12.8	13.0	11.1	10.5	10.6	9.8	1.4	1.2	3.8	-0.2	-0.7	2.3	-0.5	-0.5	0.0	4.7	5.0	2.7
O	Public administration and defence; compulsory social security	4.3	2.8	9.9	1.9	2.1	0.9	-1.7	-1.1	-3.8	-2.3	-2.6	-1.3	-4.7	-4.0	-7.1	10.2	9.4	13.2	8.0	6.5	13.8	5.9	4.9	9.4	2.6	1.3	7.6
P	Education	2.6	2.0	5.3	3.6	4.2	1.3	-1.5	-0.5	-5.6	0.8	1.6	-2.5	1.7	2.5	-1.9	6.2	6.3	5.2	9.3	9.5	9.1	6.8	7.1	5.4	8.4	8.7	7.2
Q	Human health and social work activities	0.5	0.3	1.8	7.0	8.5	-0.6	9.0	10.1	3.1	9.4	10.1	6.0	14.3	15.0	10.4	7.4	7.6	6.4	4.7	4.7	5.1	5.2	5.3	5.2	4.0	4.6	0.9
R	Arts, entertainment and recreation	13.5	13.0	15.7	2.5	3.6	-3.4	3.5	5.2	-6.4	5.3	6.6	-2.1	20.1	23.1	4.3	-2.7	-3.2	0.4	-10.0	-11.6	0.0	-7.8	-8.8	-1.2	-12.8	-14.3	-3.3
S	Other service activities	-1.4	-3.0	7.3	12.8	14.2	7.0	16.9	17.6	12.5	13.1	14.3	7.7	26.5	29.1	14.9	-1.9	-1.0	-6.5	4.4	6.8	3.0	-3.4	-3.8	-4.3	-8.8	-9.2	-7.2

¹ NCEA - 2008 - National Classification of economic activities comparable with NACE Rev.2.

² Preliminary data.

TOT – Total labour costs

WAG – Wages and salaries costs

OTH – Other (non-wage) costs

Table 2.

Labour Cost Index - Total labour costs for the period 2009 - 2013

(Working day adjusted, 2008=100)

(Per cent)

Code NCEA - 2008 ¹	Economic activities	2009				2010				2011				2012 ²				2013 ²			
		Q1	Q2	Q3	Q4	Q1	Q2	Q3	Q4	Q1	Q2	Q3	Q4	Q1	Q2	Q3	Q4	Q1	Q2	Q3	Q4
B to S	All NACE branches except agriculture, fishing, private households with employed persons	103.1	107.8	115.6	115.3	111.7	114.8	124.5	124.1	118.1	124.7	132.9	135.3	126.5	133.8	143.4	145.5	132.4	138.4	147.5	151.8
B to E	Industry (except construction)	105.4	109.2	111.9	114.3	113.7	116.4	122.3	125.8	116.0	122.2	126.8	130.0	123.6	126.4	132.1	135.8	128.8	131.2	136.9	141.9
G to N	Services (excluding public administration)	104.1	107.8	111.0	114.0	111.8	113.3	115.9	120.3	123.1	129.2	131.0	140.0	134.5	145.4	149.3	156.0	141.0	148.0	150.7	163.6
B	Mining and quarrying	103.1	102.8	104.6	118.1	119.1	112.9	118.4	135.4	118.8	122.5	127.9	147.6	134.0	129.1	140.2	148.2	134.7	131.0	139.8	161.4
C	Manufacturing	105.1	106.4	111.1	111.8	113.1	113.7	120.5	120.8	114.7	118.8	124.9	126.3	122.8	124.8	130.9	133.6	129.0	129.8	136.6	140.3
D	Electricity, gas, steam and air conditioning supply	103.2	125.9	113.0	117.6	108.3	126.1	127.7	138.8	114.6	133.3	129.6	131.1	116.4	126.4	126.8	129.5	118.8	132.3	129.1	127.8
E	Water supply, sewerage, waste management and remediation activities	91.1	93.2	103.7	108.2	101.1	107.1	110.7	118.2	104.6	113.4	114.9	122.1	108.1	115.4	118.3	130.6	112.0	118.6	122.6	134.3
F	Construction	116.8	115.5	116.7	125.6	132.6	122.6	127.4	131.8	133.6	127.1	128.7	142.0	136.8	129.8	130.9	141.3	136.4	136.2	136.5	147.3
G	Wholesale and retail trade; repair of motor vehicles and motorcycles	113.8	115.3	120.2	117.4	115.1	112.8	111.3	114.4	133.2	136.7	134.2	144.0	142.9	158.2	161.0	167.8	151.0	163.7	163.2	188.4
H	Transportation and storage	101.9	102.5	104.9	108.1	110.0	110.6	118.9	121.8	111.9	115.2	118.9	125.4	117.0	119.6	125.7	127.5	118.0	121.3	126.9	127.2
I	Accommodation and food service activities	107.7	108.6	106.1	113.6	114.0	116.0	113.8	119.9	117.9	122.7	119.5	129.4	134.0	141.5	141.0	153.0	149.6	154.4	144.6	160.3
J	Information and communication	94.0	98.4	106.0	113.1	107.9	110.4	119.8	121.0	129.4	139.6	149.2	155.3	139.0	155.3	161.7	169.4	152.9	155.1	165.8	170.3
K	Financial and insurance activities	91.1	105.4	99.8	109.0	100.5	110.5	108.5	118.8	99.8	110.8	112.0	125.2	105.2	119.3	118.3	125.6	109.8	119.1	119.2	131.3
L	Real estate activities	92.6	98.8	103.5	113.2	103.7	108.6	116.2	125.5	112.7	112.2	113.6	117.5	141.4	148.3	149.2	159.9	142.8	140.0	146.7	151.9
M	Professional, scientific and technical activities	93.1	97.0	105.2	107.1	110.1	109.1	118.9	124.5	123.9	130.3	143.2	153.4	151.4	153.5	169.2	177.9	152.1	154.3	165.2	171.5
N	Administrative and support service activities	106.3	110.9	114.9	122.0	118.4	125.6	124.2	128.3	127.3	139.9	133.9	141.1	142.3	152.9	151.0	155.9	144.4	152.6	150.2	163.3
O	Public administration and defence; compulsory social security	89.9	100.5	108.5	113.2	99.0	111.6	125.2	127.9	103.7	114.7	127.5	133.4	105.6	112.8	124.5	127.2	116.4	121.8	131.9	130.5
P	Education	89.5	102.9	161.7	118.6	96.0	111.0	177.7	124.7	99.6	115.5	174.1	128.0	103.2	113.8	175.5	130.2	109.6	124.4	187.4	141.1
Q	Human health and social work activities	102.1	107.2	115.9	113.6	110.5	116.6	125.2	125.4	111.0	118.1	126.5	126.0	118.8	128.7	138.4	144.0	127.6	134.8	145.7	149.8
R	Arts, entertainment and recreation	101.3	106.5	123.9	117.9	108.3	109.2	119.3	121.3	130.5	137.6	142.3	137.7	133.8	142.4	149.8	165.4	130.2	128.2	138.2	144.3
S	Other service activities	95.5	103.1	111.8	112.8	112.4	119.9	124.3	127.3	115.8	117.6	124.0	125.6	130.6	137.5	140.3	158.9	128.2	143.5	135.6	144.9

¹ NCEA - 2008 - National Classification of economic activities comparable with NACE Rev.2.

² Preliminary data.