

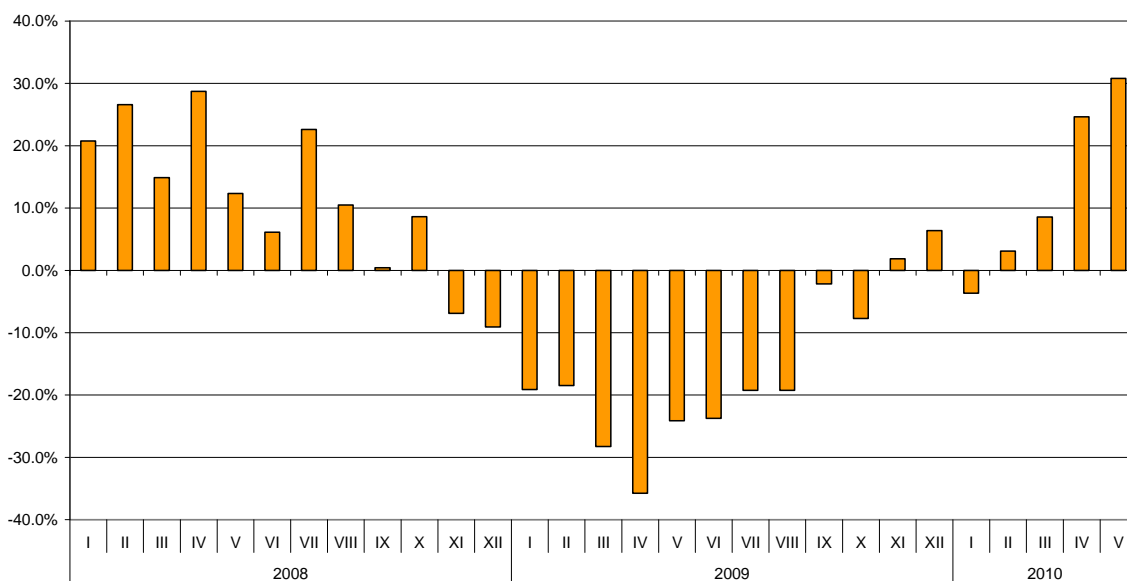


BULGARIAN TRADE WITH EU – PRELIMINARY DATA

During the period January - May 2010 the Bulgarian **exports to EU** increased by 12.3% compared to the corresponding period of the previous year and amounted to 6.3 billion leva (Table 1.1 and 1.2). The main trade partners of Bulgaria were Germany, Italy, Greece and Romania that formed over 61% of the total exports to EU Member states (Table 2). The exports to Germany increased by 20.3% and those to Italy by 18.1%. The most notable growth was observed in the exports to Luxembourg, Estonia and Slovenia. The exports to Denmark and Czech Republic reported growth by 74.2% and 54.8% respectively. The most notable fall was registered in the exports to Portugal, Belgium and Malta.

In May 2010 the exports to EU increased by 30.8% compared to the corresponding period of the previous year and reached 1.5 billion leva.

**Nominal growth of exports for EU for the period 2008 - 2010
(compared to the same month of the previous year)**

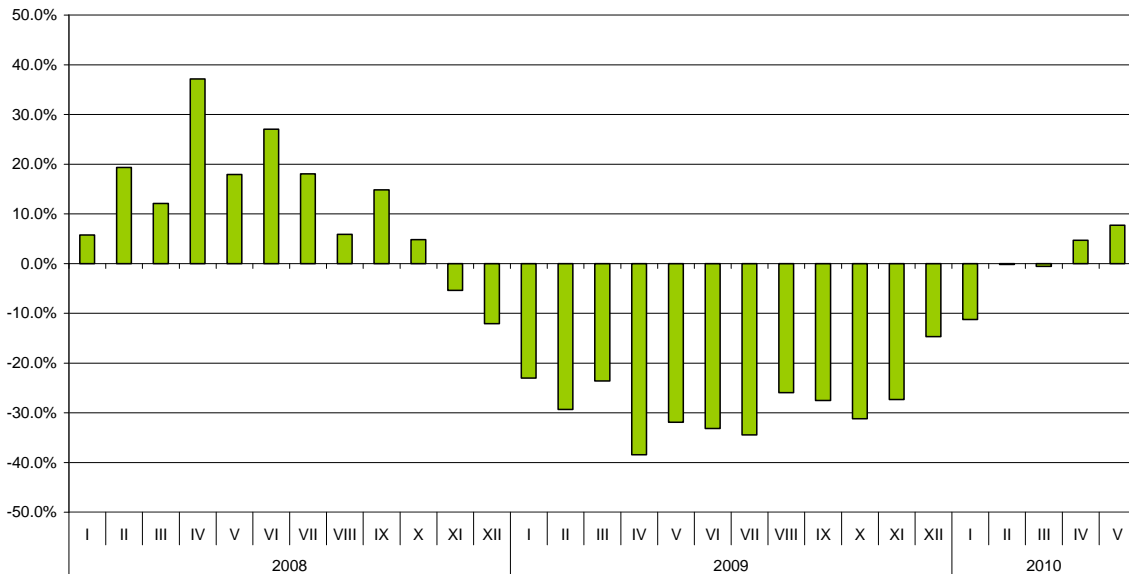


Bulgarian **imports from EU** for the period January - May 2010 increased by 0.4% compared to the corresponding period of the previous year and amounted to 8 billion leva (Table 1.1 and 1.2). The most notable growth was reported on the imports from Malta (by 67.7%) and Romania (by 46.8%) (Table 2). The imports from Portugal, Lithuania and Spain increased over 30%. The largest decrease was observed in the imports from Estonia, Sweden and Finland.



In May 2010 the Bulgarian **exports to EU Member States** increased by 7.7% compared to the corresponding month of the previous year and amounted to 1.8 billion levs.

**Nominal growth of imports from EU for the period 2008 - 2010
(compared to the same month of the previous year)**



The trade balance of Bulgaria (export FOB - import CIF) with **EU** for the period January - May 2010 was negative and amounted to 1.6 billion levs (Table 1.1).

In May 2010 the trade balance of Bulgaria was negative and amounted to 298.4 million levs.

The **exports** of Bulgaria to **EU** distributed according to the **Standard International Trade Classification** showed that in the first five months of 2010 more goods were exported from the prevailing part of the sections compared to the corresponding period of 2009 (Table 3). The largest growth was recorded in the sections “Crude materials, inedible (except fuel)”, and “Machinery and transport equipment”. A fall was observed only in exports of two sections – „Beverages and tobacco” and “Animals and vegetable oils, fats and waxes”.

On **imports** from **EU** the largest growth was reported in section “Mineral fuel, lubricants and related materials” and the lowest in section “Machinery and transport equipment”.

Table 1.1

EXPORTS, IMPORTS AND TRADE BALANCE FOR THE PERIOD JANUARY- MAY 2009 AND 2010¹ BY MONTHS

(Million Levs)

Months	Exports - FOB			Imports - CIF			Imports - FOB			Trade balance - FOB/CIF			Trade balance - FOB/FOB		
	Total	EU	Non EU	Total	EU	Non EU	Total	EU	Non EU	Total	EU	Non EU	Total	EU	Non EU
I 2009	1592.0	1113.0	479.0	2402.5	1423.7	978.8	2272.0	1353.5	918.5	-810.5	-310.7	-499.8	-680.0	-240.5	-439.5
II 2009	1761.9	1221.6	540.3	2591.2	1530.8	1060.4	2459.1	1456.4	1002.7	-829.3	-309.2	-520.1	-697.2	-234.8	-462.4
III 2009	1844.9	1172.8	672.1	2942.5	1769.0	1173.5	2796.8	1682.5	1114.3	-1097.6	-596.2	-501.4	-951.9	-509.7	-442.2
- III 2009	5198.8	3507.4	1691.4	7936.2	4723.5	3212.7	7527.9	4492.4	3035.5	-2737.4	-1216.1	-1521.3	-2329.1	-985.0	-1344.1
IV 2009	1628.8	1000.5	628.3	2709.2	1570.4	1138.8	2576.6	1499.7	1076.9	-1080.4	-569.9	-510.5	-947.8	-499.2	-448.6
V 2009	1771.5	1126.6	644.9	2797.8	1645.2	1152.6	2652.4	1566.4	1086.0	-1026.3	-518.6	-507.7	-880.9	-439.8	-441.1
I-V 2009	8599.1	5634.5	2964.6	13443.2	7939.1	5504.1	12756.9	7558.5	5198.4	-4844.1	-2304.6	-2539.5	-4157.8	-1924.0	-2233.8
I 2010	1799.3	1072.5	726.8	2256.4	1264.0	992.4	2144.6	1205.8	938.8	-457.1	-191.5	-265.6	-345.3	-133.3	-212.0
II 2010	1959.5	1259.4	700.1	2293.5	1528.0	765.5	2177.6	1451.8	725.8	-334.0	-268.6	-65.4	-218.1	-192.4	-25.7
III 2010	2192.0	1273.0	919.0	2943.4	1758.8	1184.6	2801.3	1682.4	1118.9	-751.4	-485.8	-265.6	-609.3	-409.4	-199.9
- III 2010	5950.8	3604.9	2345.9	7493.3	4550.8	2942.5	7123.5	4340.0	2783.5	-1542.5	-945.9	-596.6	-1172.7	-735.1	-437.6
IV 2010	2232.6	1247.0	985.6	3044.2	1644.2	1400.0	2893.6	1571.8	1321.8	-811.6	-397.2	-414.4	-661.0	-324.8	-336.2
V 2010	2376.9	1473.6	903.3	3139.9	1772.0	1367.9	2981.9	1692.4	1289.5	-763.0	-298.4	-464.6	-605.0	-218.8	-386.2
I-V 2010	10560.3	6325.5	4234.8	13677.4	7967.0	5710.4	12999.0	7604.2	5394.8	-3117.1	-1641.5	-1475.6	-2438.7	-1278.7	-1160.0

¹ Data are preliminary - 06.08.2010GROWTH OF EXPORTS AND IMPORTS FOR THE PERIOD JANUARY - MAY 2010¹ COMPARED TO THE SAME MONTH OF THE PREVIOUS YEAR

(Per cent)

Months	Exports - FOB			Imports - CIF			Imports - FOB		
	Total	EU	Non EU	Total	EU	Non EU	Total	EU	Non EU
I	13.0	-3.6	51.7	-6.1	-11.2	1.4	-5.6	-10.9	2.2
II	11.2	3.1	29.6	-11.5	-0.2	-27.8	-11.4	-0.3	-27.6
III	18.8	8.5	36.7	0.0	-0.6	0.9	0.2	0.0	0.4
I - III	14.5	2.8	38.7	-5.6	-3.7	-8.4	-5.4	-3.4	-8.3
IV	37.1	24.6	56.9	12.4	4.7	22.9	12.3	4.8	22.7
V	34.2	30.8	40.1	12.2	7.7	18.7	12.4	8.0	18.7
I-V	22.8	12.3	42.8	1.7	0.4	3.7	1.9	0.6	3.8

Table 2

EXPORTS, IMPORTS AND TRADE BALANCE BY GROUPS OF COUNTRIES AND MAIN TRADE PARTNERS ¹
FOR THE PERIOD JANUARY - MAY 2009 AND 2010²

(Million Levs)

	Exports - FOB			Imports - CIF			Trade balance - FOB/CIF	
	2009	2010	Growth - %	2009	2010	Growth - %	2009	2010
Total	8599.1	10560.3	22.8	13443.2	13677.4	1.7	-4844.1	-3117.1
EU	5634.5	6325.5	12.3	7939.1	7967.0	0.4	-2304.6	-1641.5
Austria	184.5	197.4	7.0	512.1	524.7	2.5	-327.6	-327.3
Belgium	506.8	392.9	-22.5	215.8	258.3	19.7	291.0	134.6
Cyprus	35.0	30.2	-13.7	20.7	19.8	-4.3	14.3	10.4
Czech Republic	63.1	97.7	54.8	324.7	277.8	-14.4	-261.6	-180.1
Denmark	22.1	38.5	74.2	78.8	65.4	-17.0	-56.7	-26.9
Estonia	2.3	5.8	152.2	7.1	2.5	-64.8	-4.8	3.3
Finland	12.0	16.7	39.2	82.7	64.6	-21.9	-70.7	-47.9
France	384.7	429.1	11.5	532.2	463.8	-12.9	-147.5	-34.7
Germany	934.1	1124.1	20.3	1704.7	1532.3	-10.1	-770.6	-408.2
Greece	810.6	895.0	10.4	763.9	746.2	-2.3	46.7	148.8
Hungary	100.9	131.4	30.2	428.9	447.4	4.3	-328.0	-316.0
Ireland	6.5	7.7	18.5	37.5	36.5	-2.7	-31.0	-28.8
Italy	869.7	1027.3	18.1	1018.8	983.6	-3.5	-149.1	43.7
Latvia	8.0	11.9	48.8	5.5	7.3	32.7	2.5	4.6
Lithuania	18.2	18.2	0.0	14.3	18.3	28.0	3.9	-0.1
Luxembourg	1.8	16.2	800.0	10.4	9.4	-9.6	-8.6	6.8
Malta	4.2	3.3	-21.4	3.1	5.2	67.7	1.1	-1.9
Netherlands	129.7	176.7	36.2	358.5	371.3	3.6	-228.8	-194.6
Poland	134.4	186.8	39.0	301.1	275.4	-8.5	-166.7	-88.6
Portugal	34.1	18.8	-44.9	31.4	42.6	35.7	2.7	-23.8
Romania	789.9	830.9	5.2	686.9	1008.1	46.8	103.0	-177.2
Slovakia	75.1	86.2	14.8	140.9	146.7	4.1	-65.8	-60.5
Slovenia	39.9	85.6	114.5	106.6	103.4	-3.0	-66.7	-17.8
Spain	237.4	233.9	-1.5	218.2	286.4	31.3	19.2	-52.5
Sweden	52.0	52.3	0.6	83.5	63.1	-24.4	-31.5	-10.8
United Kingdom	171.7	205.9	19.9	182.5	195.4	7.1	-10.8	10.5
Not specified	5.8	5.0	-13.8	68.3	11.5	-83.2	-62.5	-6.5
Non EU countries	2964.6	4234.8	42.8	5504.1	5710.4	3.7	-2539.5	-1475.6
Central and Eastern European countries	1730.7	2154.0	24.5	2207.5	2634.4	19.3	-476.8	-480.4
of which:								
Albania	44.2	45.6	3.2	1.3	8.5	553.8	42.9	37.1
Bosnia and Herzegovina	20.7	25.6	23.7	3.8	5.3	39.5	16.9	20.3
Croatia	58.4	84.2	44.2	28.5	18.1	-36.5	29.9	66.1
Serbia	255.3	386.4	51.4	86.5	147.5	70.5	168.8	238.9
The former Yugoslav Rep. of Macedonia	179.7	214.8	19.5	106.7	187.9	76.1	73.0	26.9
CIS	420.4	567.6	35.0	2763.3	2915.6	5.5	-2342.9	-2348.0
of which:								
Georgia	59.2	88.9	50.2	213.0	137.1	-35.6	-153.8	-48.2
Kazakhstan	14.6	13.4	-8.2	4.8	2.8	-41.7	9.8	10.6
Russian Fed.	213.4	301.8	41.4	1731.2	2177.7	25.8	-1517.8	-1875.9
Ukraine	62.0	82.1	32.4	783.0	565.1	-27.8	-721.0	-483.0
OECD	848.2	1257.5	48.3	1185.6	1116.0	-5.9	-337.4	141.5
of which:								
Canada	22.0	19.6	-10.9	34.6	44.2	27.7	-12.6	-24.6
Japan	12.8	12.2	-4.7	46.9	56.2	19.8	-34.1	-44.0
Korea, Rep. of	14.6	38.2	161.6	44.0	33.7	-23.4	-29.4	4.5
Turkey	564.0	959.2	70.1	758.9	736.4	-3.0	-194.9	222.8
USA	128.5	117.8	-8.3	149.8	103.4	-31.0	-21.3	14.4
EFTA	91.4	89.6	-2.0	140.4	131.3	-6.5	-49.0	-41.7
of which:								
Norway	19.4	19.7	1.5	15.1	5.0	-66.9	4.3	14.7
Switzerland	68.5	66.5	-2.9	118.9	122.5	3.0	-50.4	-56.0
Countries not included in the upper groups								
Brazil	4.3	23.0	434.9	84.0	55.2	-34.3	-79.7	-32.2
China	50.1	169.8	238.9	419.5	343.1	-18.2	-369.4	-173.3
Egypt	72.9	102.4	40.5	16.1	12.3	-23.6	56.8	90.1
India	14.7	20.1	36.7	37.8	31.3	-17.2	-23.1	-11.2
Indonesia	16.3	10.8	-33.7	14.2	10.7	-24.6	2.1	0.1
Iran	28.9	33.1	14.5	5.7	6.1	7.0	23.2	27.0
Israel	15.9	22.2	39.6	25.1	76.5	204.8	-9.2	-54.3
Peru	0.4	6.7	1575.0	84.0	237.0	182.1	-83.6	-230.3
Singapore	118.2	181.4	53.5	8.8	5.0	-43.2	109.4	176.4
South Africa	4.1	4.6	12.2	60.1	4.7	-92.2	-56.0	-0.1
Syria	33.7	68.9	104.5	16.8	27.4	63.1	16.9	41.5
Taiwan	7.6	14.9	96.1	36.5	38.1	4.4	-28.9	-23.2
United Arab Emirates	26.1	38.8	48.7	8.5	14.5	70.6	17.6	24.3
Viet Nam	8.5	6.9	-18.8	48.0	35.6	-25.8	-39.5	-28.7

¹ Partner country:

- In case of exports (or dispatches) is the country (or Member State) of final destination of the goods
- In case of imports (or arrivals) is the country (or Member State) of consignment of the goods.

² Data are preliminary - 06.08.2010

Table 3

**EXPORTS, IMPORTS AND TRADE BALANCE BY SECTIONS OF SITC, rev.4
FOR THE PERIOD JANUARY - MAY 2009 AND 2010¹**

(Million Levs)

Sections by SITC	Exports - FOB			Imports - CIF			Trade balance - FOB/CIF	
	2009	2010	Growth (%)	2009	2010	Growth (%)	2009	2010
Total	8599.1	10560.3	22.8	13443.2	13677.4	1.7	-4844.1	-3117.1
of which EU	5634.5	6325.5	12.3	7939.1	7967.0	0.4	-2304.6	-1641.5
Food and live animals	889.7	906.0	1.8	1115.4	1073.7	-3.7	-225.7	-167.7
of which EU	640.6	697.1	8.8	785.0	836.6	6.6	-144.4	-139.5
Beverages and tobacco	229.8	246.0	7.0	195.2	177.9	-8.9	34.6	68.1
of which EU	118.3	103.4	-12.6	150.6	128.3	-14.8	-32.3	-24.9
Crude materials, inedible (except fuel)	519.6	862.6	66.0	866.7	1160.4	33.9	-347.1	-297.8
of which EU	282.7	400.7	41.7	222.7	318.2	42.9	60.0	82.5
Mineral fuel, lubricants and related materials	914.9	1260.6	37.8	2643.3	2988.3	13.1	-1728.4	-1727.7
of which EU	279.7	313.5	12.1	304.2	501.0	64.7	-24.5	-187.5
Animals and vegetable oils, fats and waxes	64.4	56.5	-12.3	53.8	57.3	6.5	10.6	-0.8
of which EU	46.2	41.9	-9.3	34.4	41.8	21.5	11.8	0.1
Chemical and related products n.e.c.	705.6	878.7	24.5	1434.6	1632.9	13.8	-729.0	-754.2
of which EU	285.3	331.9	16.3	1142.7	1339.4	17.2	-857.4	-1007.5
Manufactured goods classified chiefly by material	2078.8	2538.1	22.1	2329.3	2328.6	0.0	-250.5	209.5
of which EU	1429.5	1531.7	7.1	1534.9	1509.0	-1.7	-105.4	22.7
Machinery and transport equipment	1488.0	1884.2	26.6	3676.3	3198.5	-13.0	-2188.3	-1314.3
of which EU	1095.4	1389.2	26.8	2917.0	2473.9	-15.2	-1821.6	-1084.7
Miscellaneous manufactured articles	1697.6	1914.8	12.8	1096.3	1023.1	-6.7	601.3	891.7
of which EU	1454.3	1513.0	4.0	820.3	788.3	-3.9	634.0	724.7
Commodities and transactions n.e.c.	10.7	12.8	19.6	32.3	36.7	13.6	-21.6	-23.9
of which EU	2.5	3.1	24.0	27.3	30.5	11.7	-24.8	-27.4

¹ Data are preliminary - 06.08.2010