

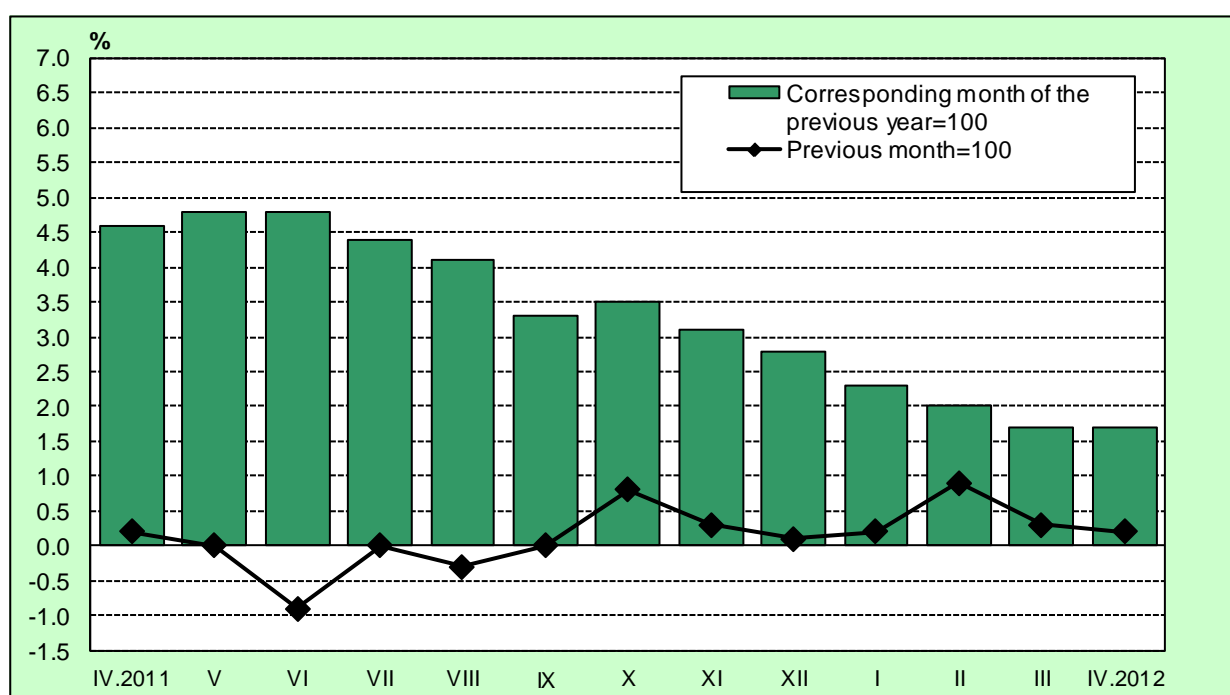


## INFLATION AND CONSUMER PRICE INDICES IN APRIL 2012

The **consumer price index** (CPI) in April 2012 compared to March 2012 was **100.2%**, i.e. the monthly inflation was **0.2%**. The inflation rate since the beginning of the year (April 2012 compared to December 2011) was **1.6%** and the annual inflation in April 2012 compared to April 2011 was **1.7%** (Table 1).

The annual average inflation, measured by CPI, in the last 12 months (May 2011 – April 2012) compared to the previous 12 months (May 2010 - April 2011) was **3.2%**.

**Figure 1. Inflation measured by CPI by months**



In April 2012 compared to the previous month the prices of goods and services in the main consumer groups have been changed as follows:

- Food and non-alcoholic beverages - a decrease of **0.1%**;
- Alcoholic beverages and tobacco - a decrease of **0.1%**;
- Clothing and footwear - an increase of **4.2%**;
- Housing (rentals, maintenance and repair), water, electricity, gas and other fuels - an increase of **0.8%**;
- Furnishings, household equipment and routine maintenance of the house - a decrease of **0.4%**;
- Health - an increase of **0.1%**;
- Transport - an increase of **0.9%**;
- Communications - the prices have remained at the level of the previous month;
- Recreation and culture - a decrease of **1.6%**;
- Education - an increase of **0.1%**;



- Restaurants and hotels - a decrease of **0.2%**;
- Miscellaneous goods and service - an increase of **0.1%**.

The **harmonized index of consumer prices (HICP)** in April 2012 compared to March 2012 was **100.2%**, i.e. the monthly inflation was **0.2%**. The inflation rate since the beginning of the year (April 2012 compared to December 2011) was **1.3%** and the annual inflation in April 2012 compared to April 2011 was **2.0%** (Table 2).

The annual average inflation, measured by HICP, in the last 12 months (May 2011 - April 2012) compared to the previous 12 months (May 2010 – April 2011) was **2.6%**.

In terms of HICP in April 2012 compared to the previous month the prices of goods and services in the main consumer groups have been changed as follows:

- Food and non-alcoholic beverages - a decrease of **0.1%**;
- Alcoholic beverages and tobacco - a decrease of **0.2%**;
- Clothing and footwear - an increase of **3.6%**;
- Housing (rentals, maintenance and repair), water, electricity, gas and other fuels - an increase of **1.1%**;
- Furnishings, household equipment and routine maintenance of the house - an increase of **0.1%**;
- Health - an increase of **0.1%**;
- Transport - an increase of **0.9%**;
- Communications - a decrease of **0.1%**;
- Recreation and culture - a decrease of **1.1%**;
- Education - an increase of **0.2%**;
- Restaurants and hotels - a decrease of **0.9%**;
- Miscellaneous goods and service - the prices have remained at the level of the previous month.

The **price index of a small basket (PISB)** in April 2012 compared to March 2012 was **99.9%** and the overall increase since the beginning of the year (April 2012 compared to December 2011) was **101.8%** (Table 3).

In April compared to the previous month the prices of goods and services in the small basket for the 20% households with the lowest income, have changed as follows:

- Food products - a decrease of **0.2%**;
- Non-food products - a decrease of **0.3%**;
- Services - an increase of **0.6%**.



## Methodological notes

The **consumer price index (CPI)** is the official measure of inflation in the Republic of Bulgaria. It measures the total relative price change of goods and services used by households for private (non-production) consumption and it is calculated by applying the structure of the final monetary consumption expenditures of the Bulgarian households. The main source of information for the expenditures is the household budget survey in the country. CPI in year  $t$  is calculated with the expenditures structure of year  $t-1$ .

The **Harmonized Index of Consumer Prices (HICP)** is the comparable measure of inflation across EU Member states. It is one of the criteria of price stability and for readiness of Bulgaria to join the euro-zone. HICP, as well as CPI, measures the total relative price change of goods and services. Both indices are calculated using the same basket of goods and services, but differ with respect to the used weights. HICP is calculated through the use of weights, which reflect the individual and the collective consumption of all households (incl. institutional and foreign households) on the economic territory of the country. The main source of information for HICP weights is the national accounts data. HICP in year  $t$  is calculated with the weights of year  $t-2$ .

The **Price Index of a Small Basket (PISB)** is a measurement of the relative average price changes of 100 socially useful and vital for the living goods and services. The weights of this index reflect the expenditures of the 20% lowest income households. The source of weights information is the Households Budget Survey in the country. This index in year  $t$  is calculated with the weights of year  $t-1$ .

-----

The **chain** consumer price indices measure the price change in current month compared to the previous month. The chain consumer price indices are used as a measure of **monthly inflation**.

The **12-month** consumer price indices measure the price changes having occurred between the current month and the same month of the previous year. The 12-month consumer price indices are used as a measure of **annual inflation**.

Consumer price indices **over December of the previous year** measure the accumulated changes in prices of the current month with respect to December of previous year. Consumer price indices over December of the previous year are used as measures of the **inflation since the beginning of the year**. In December of each year, the 12-month index is equal to the index over December of the previous year.

The **annual average** consumer price indices measure the average price change during the 12 months of the current year compared to the average price change during the 12 months of the previous year. The annual average consumer price indices are used as a measure of the **annual average inflation**.



## Annexes

Table 1

### CONSUMER PRICE INDICES: APRIL 2012

(Per cent)

Commodity groups	2011 weights - %	April 2012		
		Previous month = 100	December 2011 = 100	Corresponding month of the previous year = 100
<b>00 Total CPI</b>	<b>100.000</b>	<b>100.2</b>	<b>101.6</b>	<b>101.7</b>
01 Food and non-alcoholic beverages	37.201	99.9	102.4	100.2
02 Alcoholic beverages, tobacco	5.331	99.9	100.0	99.7
03 Clothing and footwear	3.627	104.2	98.1	100.6
04 Housing, water, electricity, gas and other fuels	17.142	100.8	102.2	105.1
05 Furnishing, household equipment and routine maintenance of the house	3.350	99.6	99.0	99.0
06 Health	6.885	100.1	100.0	102.0
07 Transport	7.493	100.9	107.6	108.5
08 Communications	5.646	100.0	99.6	99.1
09 Recreation and culture	3.677	98.4	96.8	96.7
10 Education	0.519	100.1	102.3	106.4
11 Restaurants and hotels	4.939	99.8	100.1	102.6
12 Miscellaneous goods and services	4.190	100.1	100.2	101.6
Foods	38.505	99.9	102.4	100.2
Non-foods	29.929	100.6	101.8	103.1
Catering	4.583	100.1	100.5	102.9
Services	26.983	100.4	100.6	102.2



Table 2

**HARMONISED INDICES OF CONSUMER PRICES: APRIL 2012**

(Per cent)

Commodity groups	2010 - weights - ‰	April 2012			
		2005 = 100	Previous month = 100	December 2011 = 100	Corresponding month of the previous year = 100
<b>00 Total HICP</b>	<b>1000.000</b>	<b>144.03</b>	<b>100.2</b>	<b>101.3</b>	<b>102.0</b>
01 Food and non-alcoholic beverages	225.264	150.32	99.9	101.7	100.9
02 Alcoholic beverages, tobacco	79.498	263.72	99.8	100.0	99.8
03 Clothing and footwear	32.902	130.61	103.6	98.4	100.9
04 Housing, water, electricity, gas and other fuels	83.817	139.53	101.1	102.0	104.4
05 Furnishing, household equipment and routine maintenance of the house	66.344	115.20	100.1	99.9	99.8
06 Health	61.449	140.14	100.1	100.2	106.7
07 Transport	193.023	147.62	100.9	105.7	106.2
08 Communications	66.771	91.71	99.9	99.6	98.5
09 Recreation and culture	62.115	106.83	98.9	96.7	95.2
10 Education	8.375	171.80	100.2	102.3	106.5
11 Restaurants and hotels	69.092	156.11	99.1	98.9	101.9
12 Miscellaneous goods and services	51.350	165.93	100.0	100.3	102.4

Table 3

**PRICE INDICES OF 100 SOCIALLY USEFUL AND VITAL FOR THE  
LIVING GOODS AND SERVICES IN THE SMALL BASKET FOR THE  
20% LOWEST INCOME HOUSEHOLDS: APRIL 2012**

Commodity groups	2011 weights - %	(Per cent)
		April 2012 Previous month = 100
<b>Total PISB</b>	<b>100.000</b>	<b>99.9</b>
Food and non-alcoholic beverages	59.316	99.8
Clothing and footwear	2.302	100.6
Housing, water, electricity, gas and other fuels	21.521	100.4
Furnishing, household equipment and routine maintenance of the house	2.570	97.5
Health	6.675	100.1
Transport	1.626	101.4
Communications	1.558	100.0
Recreation and culture	0.574	100.2
Miscellaneous goods and services	3.857	100.0
<b>Foods</b>	<b>59.316</b>	<b>99.8</b>
<b>Non-foods</b>	<b>19.308</b>	<b>99.7</b>
<b>Services</b>	<b>21.376</b>	<b>100.6</b>