



## Industrial Production Indices and Industrial Turnover Indices in July 2009<sup>1,2</sup>

### 1. Industrial Production Indices<sup>3</sup>

The preliminary data showed that the Industrial Production Index decreased by 18.9% in July 2009 as compared to July 2008. Decreases were registered in the mining and quarrying industry by 13.0% and in the manufacturing industry by 24.3%, while an increase by 1.3% was seen in the electricity, gas, steam and air conditioning supply. The production of investment goods fell by 30.5%, the production of intermediate goods - by 29.5%, the production of energy - by 3.5%.

In July 2009, the Industrial Production Index increased by 1.6% as compared to the previous month. Increases of 8.9% were registered in the mining and quarrying industry and 5.3% in the electricity, gas, steam and air conditioning supply. In the manufacturing industry the production decrease by 0.1%. There were decreases in the printing and reproduction of recorded media by 16.8%, the manufacture of basic pharmaceutical products and pharmaceutical preparations by 16.5%, manufacture of textiles by 2.9%. The most significant increases of production were seen in the manufacture of chemicals and chemical products - by 13.7%, in the manufacture of basic metals - by 13.6%, in the manufacture of furniture - by 8.7%.

### 2. Industrial Turnover Indices<sup>4</sup>

According to the preliminary data in July 2009 the Industrial Turnover Index decreased by 24.5% compared to July 2008. The mining and quarrying industry reported a drop of 23.3%, the manufacturing industry - 28.4% and the electricity, gas, steam and air conditioning supply - 7.4%.

In July 2009, the turnover increased by 0.4% as compared to the previous month. The increase in the manufacturing industry was 0.5%, while the turnover in the electricity, gas, steam and air conditioning supply fell by 1.9%.

---

<sup>1</sup> July 2009 data are preliminary.

<sup>2</sup> Since January 2009, Industrial Production Indices and Industrial Turnover Indices are calculated according to the new Classification of Economic Activities NACE.BG 2008. At the same time, the base year has been changed and indices are calculated at 2005 as a base year. Historical data series have been recalculated back to 2000 and they are posted in NSI web-site ([http://www.nsi.bg/Op\\_e/Op\\_e.htm](http://www.nsi.bg/Op_e/Op_e.htm)).

<sup>3</sup> Monthly Industrial Production and Industrial turnover indices measure changes in **production and turnover values** of industrial enterprises. This information can be used to access the current economic development and for short-term forecasts. Indices do not measure the actual production level, it aims to measure the average change in value of production between two points of time

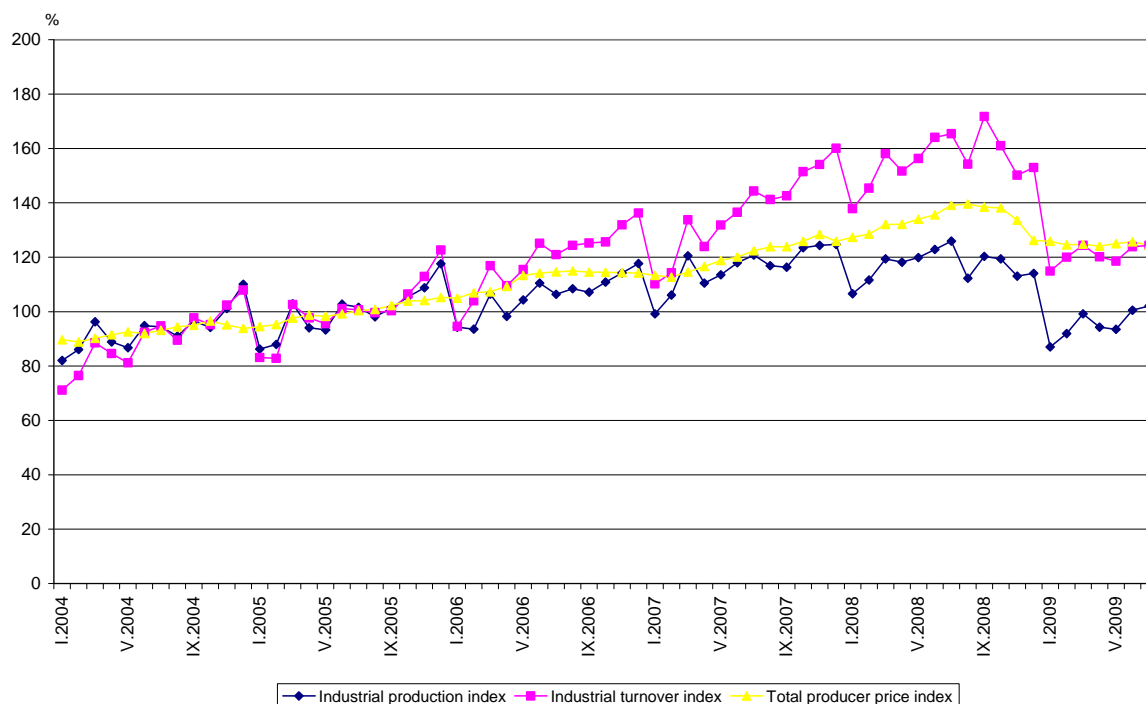
Indices are compiled on the base of information collected through representative sampling survey on industrial enterprises. The sample covers enterprises with annual turnover more than 97% of total turnover in industry.

Industrial production indices are calculated at constant base year (2005) that is to say they are weighted with the structure of the value added at factor costs in the base year

<sup>4</sup> The turnover comprises the totals invoiced by the observation units plus taxes on products (excise duty). Turnover indices are calculated at 2005 as a base year through direct comparison of the values of the turnover at current prices, turnover values are not corrected with the price changes. **The Turnover indices reflect the development of the value of sales as well as changes in prices.**

The final data on Industrial Production and Turnover Indices can be found in NSI internet web-site: ([http://www.nsi.bg/Op\\_e/Op\\_e.htm](http://www.nsi.bg/Op_e/Op_e.htm)).

### Industrial Production Indices and Industrial Turnover Indices (2005 = 100)



**Industrial Production Indices in July 2009<sup>5</sup>**  
**(Preliminary data)**

Economic activities	2005=100	Previous month=100	The same month of 2008=100
<b>Industry</b>	<b>102.1</b>	<b>101.6</b>	<b>81.1</b>
<b>Mining and quarrying</b>	<b>75.1</b>	<b>108.9</b>	<b>87.0</b>
of which:			
Mining of coal and lignite	85.4	123.4	81.7
Mining of metal ores	78.3	107.5	114.2
Other mining and quarrying	79.0	88.3	62.3
<b>Manufacturing</b>	<b>102.7</b>	<b>99.9</b>	<b>75.7</b>
of which:			
Manufacture of food products	118.8	102.0	92.5
Manufacture of beverages	119.7	101.2	76.2
Manufacture of tobacco products	118.0	105.3	76.8
Manufacture of textiles	74.8	97.1	64.3
Manufacture of wearing apparel	88.4	110.2	81.2
Manufacture of leather and related products	104.5	129.4	82.2
Manufacture of wood and of products of wood and cork, except furniture; manufacture of articles of straw and plaiting materials	85.9	111.1	67.5
Manufacture of paper and paper products	71.0	106.9	60.3
Printing and reproduction of recorded media	139.7	83.2	121.4
Manufacture of chemicals and chemical products	82.0	113.7	58.3
Manufacture of basic pharmaceutical products and pharmaceutical preparations	67.0	83.5	69.6
Manufacture of rubber and plastic products	113.9	98.3	76.2
Manufacture of other non-metallic mineral products	95.7	95.1	57.3
Manufacture of basic metals	107.6	113.6	83.2
Manufacture of fabricated metal products, except machinery and equipment	86.7	97.7	61.7
Manufacture of computer, electronic and optical products	91.3	83.4	81.8
Manufacture of electrical equipment	133.5	105.3	73.1
Manufacture of machinery and equipment n.e.c.	110.7	100.4	74.1
Manufacture of motor vehicles, trailers and semi-trailers	120.4	101.4	89.0
Manufacture of other transport equipment	131.9	132.4	71.4
Manufacture of furniture	101.3	108.7	64.2
Other manufacturing	169.0	93.8	108.2
Repair and installation of machinery and equipment	97.9	119.0	62.8
<b>Electricity, gas, steam and air conditioning supply</b>	<b>109.3</b>	<b>105.3</b>	<b>101.3</b>
Electricity, gas, steam and air conditioning supply	109.3	105.3	101.3

<sup>5</sup> In the tables are not included data that according to the Law on Statistics are confidential and in this way they are statistical secrecy.

**Industrial Turnover Indices in July 2009<sup>6</sup>**  
**(Preliminary data)**

Economic activities	2005=100	Previous month=100	The same month of 2008=100
<b>Industry</b>	<b>124.4</b>	<b>100.4</b>	<b>75.5</b>
<b>Mining and quarrying</b>	<b>115.5</b>	<b>113.1</b>	<b>76.7</b>
of which:			
Mining of coal and lignite	131.2	122.0	88.7
Mining of metal ores	125.0	118.9	81.1
Other mining and quarrying	108.2	91.7	64.0
<b>Manufacturing</b>	<b>121.6</b>	<b>100.5</b>	<b>71.6</b>
of which:			
Manufacture of food products	173.5	102.8	96.8
Manufacture of beverages	170.8	100.1	84.1
Manufacture of tobacco products	127.7	111.3	105.0
Manufacture of textiles	87.4	95.9	70.2
Manufacture of wearing apparel	115.1	110.7	88.9
Manufacture of leather and related products	111.8	132.2	85.7
Manufacture of wood and of products of wood and cork, except furniture; manufacture of articles of straw and plaiting materials	119.5	115.6	70.3
Manufacture of paper and paper products	87.2	106.6	65.2
Printing and reproduction of recorded media	130.0	83.4	107.3
Manufacture of chemicals and chemical products	115.9	109.4	59.7
Manufacture of basic pharmaceutical products and pharmaceutical preparations	81.2	80.8	72.9
Manufacture of rubber and plastic products	143.6	103.4	72.8
Manufacture of other non-metallic mineral products	130.2	95.7	62.0
Manufacture of basic metals	103.2	104.1	58.3
Manufacture of fabricated metal products, except machinery and equipment	126.4	100.1	74.6
Manufacture of computer, electronic and optical products	101.4	90.2	80.8
Manufacture of electrical equipment	165.1	102.4	78.8
Manufacture of machinery and equipment n.e.c.	123.5	96.6	67.9
Manufacture of motor vehicles, trailers and semi-trailers	87.9	89.6	50.2
Manufacture of other transport equipment	157.1	117.0	91.7
Manufacture of furniture	125.7	109.3	71.1
Other manufacturing	187.1	90.8	147.6
Repair and installation of machinery and equipment	136.0	113.5	67.7
<b>Electricity, gas, steam and air conditioning supply</b>	<b>136.1</b>	<b>98.1</b>	<b>92.6</b>
Electricity, gas, steam and air conditioning supply	136.1	98.1	92.6

<sup>6</sup> In the tables are not included data that according to the Law on Statistics are confidential and in this way they are statistical secrecy.