

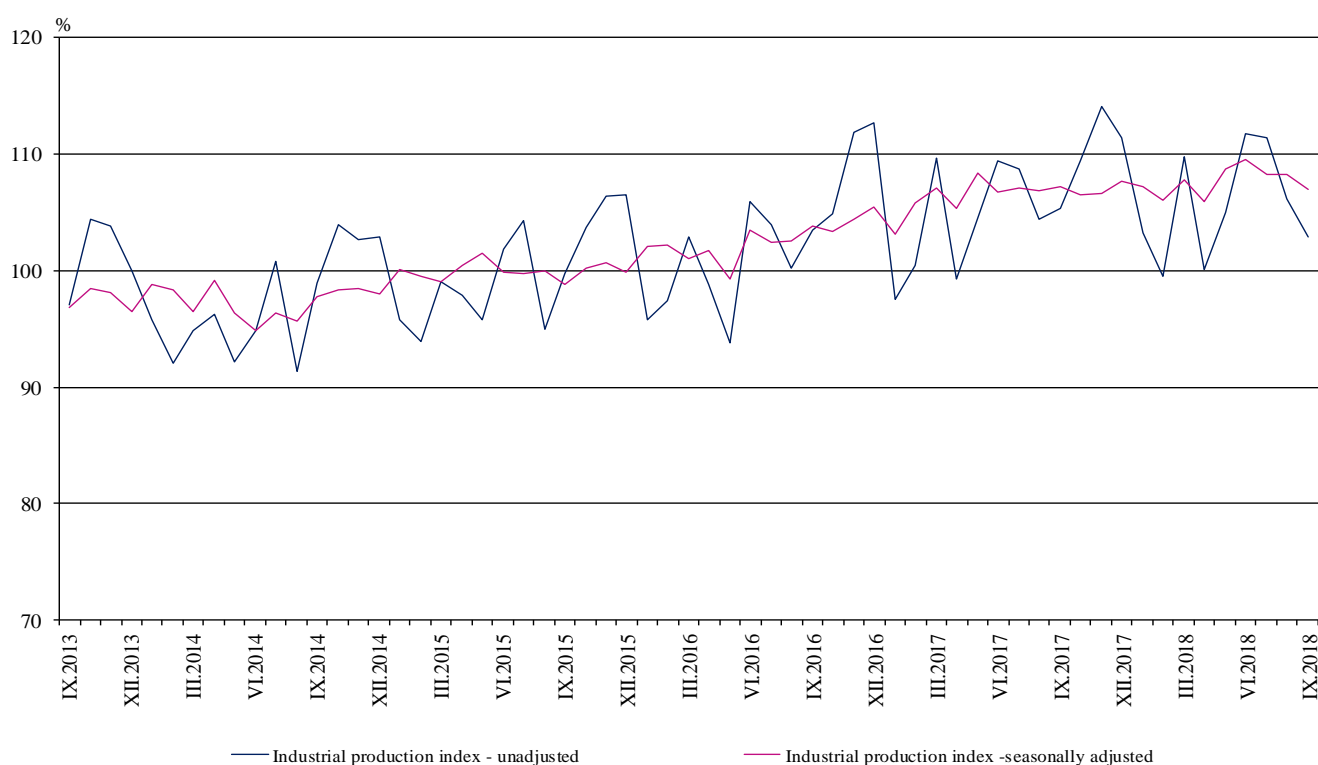


INDUSTRIAL PRODUCTION INDICES IN SEPTEMBER 2018¹

According to the preliminary data the Industrial Production Index², seasonally adjusted³, fell by 1.2% in September 2018 as compared to August 2018.

In September 2018 the working day adjusted⁴ Industrial Production Index decreased by 0.8% in comparison with the same month of 2017.

Figure 1. Industrial Production Indices (2015 = 100)



¹ September 2018 data are preliminary. The final data on Industrial Production and Turnover Indices for August 2018 can be found on the NSI website: <http://www.nsi.bg/en>.

² Monthly Industrial Production and Industrial turnover indices measure changes in production and turnover values of industrial enterprises. This information can be used to assess the current economic development and for short-term forecasts. Indices do not measure the actual production level, it aims to measure the average change in value of production between two points of time. Indices are compiled on the base of information collected through representative sampling survey on industrial enterprises. The sample covers enterprises with annual turnover more than 97% of total turnover in industry.

Industrial production indices are calculated at constant base year that is to say they are weighted with the structure of the value added at factor costs in the base year.

³ Seasonal adjustment is a statistical method, which eliminates the seasonal component of time series.

⁴ Working day adjustment is an adjustment for variations caused by calendar effects, different number of calendar and working days in the months, national holidays and outliers (for example the presence of more non-working days in May could contribute to the decline in the production in some activities).

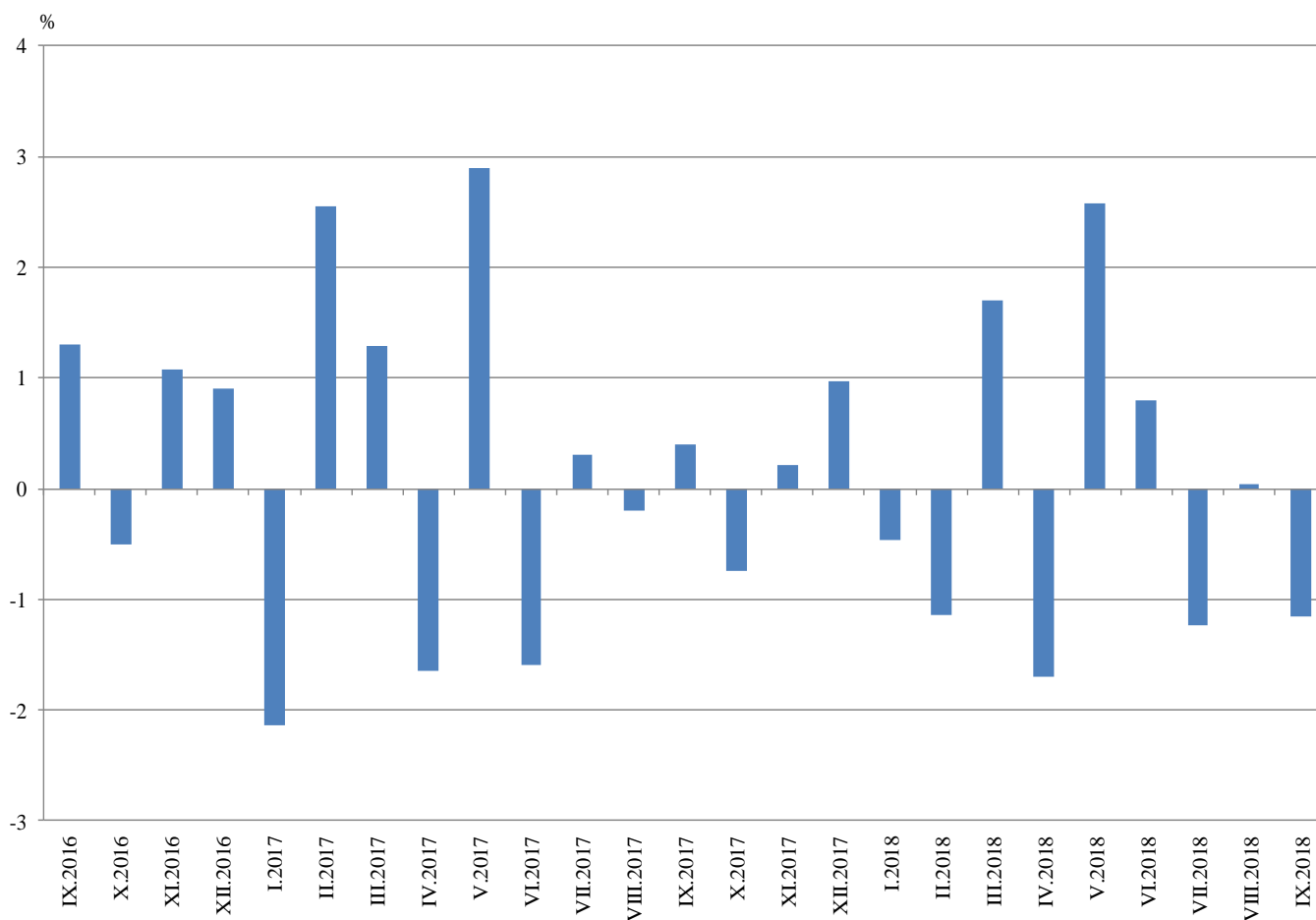


Monthly comparisons

In September 2018 as compared to August 2018, the seasonally adjusted Industrial Production Index decreased in the electricity, gas, steam and air conditioning supply by 1.9% and in the manufacturing by 1.4%, while in the mining and quarrying industry the production increased by 3.2%.

The most significant production decreases in the manufacturing were registered in the manufacture of fabricated metal products, except machinery and equipment by 17.8%, in the repair and installation of machinery and equipment by 16.7%, in the manufacture of chemicals and chemical products by 8.6%, in the manufacture of textiles by 6.8%. There were increases in the manufacture of basic pharmaceutical products and pharmaceutical preparations by 11.8%, in the manufacture of tobacco products by 8.6%, in the manufacture of other transport equipment by 7.4%, in the manufacture of wood and of products of wood and cork, except furniture; manufacture of articles of straw and plaiting materials by 6.5%.

**Figure 2. Changes of Industrial Production Indices compared to the previous month
(Seasonally adjusted)**



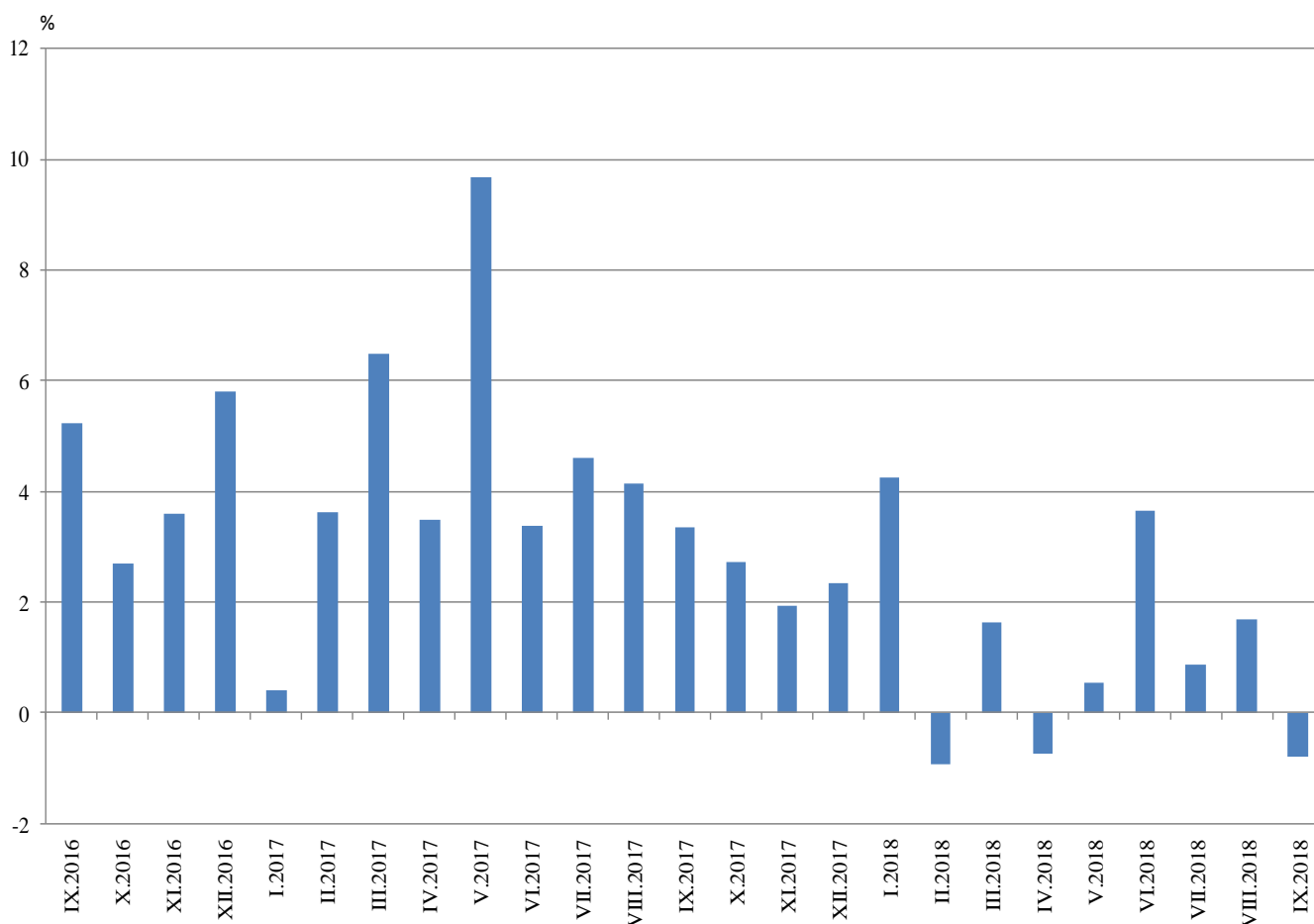


Annual comparisons

On annual basis in September 2018 Industrial Production Index calculated from working day adjusted data went down in the mining and quarrying industry by 12.2% and in the in the electricity, gas, steam and air conditioning supply by 4.7%, while the production rose in the manufacturing by 0.8%.

In the manufacturing, the more considerable increases compared to the same month of the previous year were registered in the manufacture of computer, electronic and optical products by 32.6%, in the manufacture of basic pharmaceutical products and pharmaceutical preparations by 24.7%, in the manufacture of other transport equipment by 18.0%, in the manufacture of motor vehicles, trailers and semi-trailers by 14.7%. Decreases were seen in the manufacture of tobacco products by 24.2%, in the manufacture of fabricated metal products, except machinery and equipment by 13.3%, in the manufacture of basic metals by 12.1%, in the manufacture of chemicals and chemical products by 10.1%.

Figure 3. Changes of Industrial Production Indices compared to the same month of the previous year (Working day adjusted)



Annex

Table 1
Changes of Industrial Production Indices compared to the previous month^{1,2}
(Per cent)

Economic activities	NACE.BG - 2008	2018					
		IV	V	VI	VII	VIII	IX
Industry	B_TO_E36	-1.7	2.6	0.8	-1.2	0.0	-1.2
Mining and quarrying	B	-0.6	1.5	18.8	-17.7	-2.0	3.2
Mining of coal and lignite	B05	-20.8	20.1	16.7	-20.6	-3.5	-14.2
Extraction of crude petroleum and natural gas	B06
Mining of metal ores	B07	9.5	-12.8	33.7	-18.4	-7.8	16.7
Other mining and quarrying	B08	12.1	-1.6	0.3	-13.8	8.2	10.1
Mining support service activities	B09
Manufacturing	C	-1.7	3.3	0.4	-0.4	0.7	-1.4
Manufacture of food products	C10	-7.3	3.5	-2.6	0.7	-0.8	-0.1
Manufacture of beverages	C11	-1.5	7.9	-1.3	-6.7	5.4	2.0
Manufacture of tobacco products	C12	1.1	7.4	3.7	-16.2	-10.8	8.6
Manufacture of textiles	C13	-5.2	-2.3	0.2	7.3	0.5	-6.8
Manufacture of wearing apparel	C14	-5.1	1.3	0.0	1.2	-0.2	-2.7
Manufacture of leather and related products	C15	-5.3	2.6	-1.0	-3.8	-3.0	0.7
Manufacture of wood and of products of wood and cork, except furniture; manufacture of articles of straw and plaiting materials	C16	3.7	0.2	-4.9	-1.9	-2.3	6.5
Manufacture of paper and paper products	C17	-0.9	3.0	1.4	-1.3	-2.0	-0.7
Printing and reproduction of recorded media	C18	2.0	2.3	-2.9	-2.3	4.2	-4.1
Manufacture of coke and refined petroleum products	C19
Manufacture of chemicals and chemical products	C20	1.0	3.2	3.9	-3.2	3.9	-8.6
Manufacture of basic pharmaceutical products and pharmaceutical preparations	C21	-1.3	1.2	0.3	3.4	-0.5	11.8
Manufacture of rubber and plastic products	C22	-1.1	6.9	-1.2	2.0	-5.9	4.3
Manufacture of other non-metallic mineral products	C23	2.6	0.3	0.5	-1.7	1.6	-2.9
Manufacture of basic metals	C24	-2.7	1.9	0.2	1.4	1.5	-1.9
Manufacture of fabricated metal products, except machinery and equipment	C25	-12.5	12.5	-4.8	15.9	-6.9	-17.8
Manufacture of computer, electronic and optical products	C26	-7.1	-2.0	6.5	1.4	2.4	3.9
Manufacture of electrical equipment	C27	2.4	2.6	-0.6	-2.9	11.2	-5.2
Manufacture of machinery and equipment n.e.c.	C28	4.0	-4.4	1.3	-0.4	1.1	2.7
Manufacture of motor vehicles, trailers and semi-trailers	C29	3.7	3.0	2.9	-4.6	0.4	1.7
Manufacture of other transport equipment	C30	-1.6	-3.2	7.6	-7.0	-7.4	7.4
Manufacture of furniture	C31	-4.3	7.0	-4.0	0.3	-5.7	3.2
Other manufacturing	C32	12.7	-8.6	3.3	-5.3	-3.4	0.4
Repair and installation of machinery and equipment	C33	-1.7	12.6	-4.2	-9.7	16.3	-16.7
Electricity, gas, steam and air conditioning supply	D	-6.3	0.4	-0.7	-0.5	1.3	-1.9
Electricity, gas, steam and air conditioning supply	D35	-6.3	0.4	-0.7	-0.5	1.3	-1.9

¹ Seasonally adjusted.

² ‘.’ - Confidential data.

Table 2

Changes of Industrial Production Indices compared to the same month of the previous year^{1,2}
(Per cent)

Economic activities	NACE.BG - 2008	2018					
		IV	V	VI	VII	VIII	IX
Industry	B_TO_E36	-0.7	0.5	3.6	0.9	1.7	-0.8
Mining and quarrying	B	-2.3	-8.0	9.1	-8.8	-17.3	-12.2
Mining of coal and lignite	B05	-30.9	-22.1	4.9	-12.5	-18.1	-29.1
Extraction of crude petroleum and natural gas	B06
Mining of metal ores	B07	17.4	-0.8	19.3	-2.9	-16.9	-2.7
Other mining and quarrying	B08	32.3	26.6	18.5	12.9	19.4	29.1
Mining support service activities	B09
Manufacturing	C	-1.1	1.1	3.8	2.0	4.3	0.8
Manufacture of food products	C10	2.3	0.3	-7.0	-3.3	-0.2	-1.2
Manufacture of beverages	C11	1.5	9.9	10.3	-4.9	8.9	6.1
Manufacture of tobacco products	C12	-19.4	-20.9	-5.8	-13.3	-37.1	-24.2
Manufacture of textiles	C13	-4.4	-7.7	-7.7	2.8	5.5	-7.6
Manufacture of wearing apparel	C14	-9.1	-7.4	-7.4	-3.7	-0.9	-8.2
Manufacture of leather and related products	C15	3.1	0.8	4.5	10.2	1.3	0.0
Manufacture of wood and of products of wood and cork, except furniture; manufacture of articles of straw and plaiting materials	C16	-8.5	-9.7	-11.9	-9.4	-7.9	-4.3
Manufacture of paper and paper products	C17	-1.2	-2.3	3.4	4.1	-1.8	-1.2
Printing and reproduction of recorded media	C18	5.9	3.1	3.2	-3.7	7.9	1.7
Manufacture of coke and refined petroleum products	C19
Manufacture of chemicals and chemical products	C20	-9.2	-3.8	5.3	-8.4	-8.7	-10.1
Manufacture of basic pharmaceutical products and pharmaceutical preparations	C21	14.9	4.0	-2.4	4.8	5.3	24.7
Manufacture of rubber and plastic products	C22	2.0	12.0	11.5	16.9	1.7	5.4
Manufacture of other non-metallic mineral products	C23	6.0	6.0	10.0	4.7	4.7	3.3
Manufacture of basic metals	C24	1.7	-3.6	-4.2	9.8	14.8	-12.1
Manufacture of fabricated metal products, except machinery and equipment	C25	-24.9	-7.6	-5.2	-6.7	-2.6	-13.3
Manufacture of computer, electronic and optical products	C26	6.1	11.7	11.0	14.5	12.0	32.6
Manufacture of electrical equipment	C27	13.3	12.1	11.7	7.4	26.2	8.8
Manufacture of machinery and equipment n.e.c.	C28	5.5	-9.8	1.4	-1.8	0.1	3.1
Manufacture of motor vehicles, trailers and semi-trailers	C29	23.2	20.0	31.3	16.9	23.0	14.7
Manufacture of other transport equipment	C30	55.9	27.2	33.7	33.1	15.2	18.0
Manufacture of furniture	C31	0.4	7.3	6.3	10.0	1.7	7.9
Other manufacturing	C32	15.9	8.5	7.2	15.7	-6.8	-4.8
Repair and installation of machinery and equipment	C33	15.4	15.2	24.7	-10.4	34.7	-1.0
Electricity, gas, steam and air conditioning supply	D	-3.6	-5.1	-4.9	-4.9	-2.6	-4.7
Electricity, gas, steam and air conditioning supply	D35	-3.6	-5.1	-4.9	-4.9	-2.6	-4.7

¹ Working day adjusted.

² ‘.’ - Confidential data.

Table 3

Industrial Production Indices¹
(Seasonally adjusted, 2015 = 100)

NACE.BG - 2008	2017				2018								
	IX	X	XI	XII	I	II	III	IV	V	VI	VII	VIII	IX
B_TO_E36	107.3	106.5	106.7	107.7	107.2	106.0	107.8	106.0	108.7	109.6	108.2	108.3	107.0
B	109.5	104.4	102.9	100.4	101.0	96.3	96.3	95.7	97.1	115.4	95.0	93.1	96.0
B05	95.2	93.6	79.4	86.0	81.6	74.8	92.7	73.5	88.2	102.9	81.7	78.9	67.7
B06
B07	126.9	117.5	120.0	110.0	124.4	122.1	110.0	120.4	104.9	140.3	114.6	105.6	123.2
B08	82.5	84.8	95.1	89.8	113.5	105.3	92.9	104.2	102.6	102.9	88.7	96.0	105.7
B09
C	111.1	111.1	112.0	114.2	114.2	110.5	111.4	109.5	113.1	113.5	113.1	113.9	112.3
C10	103.7	104.8	105.1	110.7	110.1	103.6	110.0	101.9	105.5	102.8	103.5	102.7	102.5
C11	99.0	100.6	93.5	97.0	102.6	96.4	98.6	97.1	104.8	103.4	96.5	101.7	103.8
C12	68.8	65.5	64.0	57.7	57.4	63.7	60.4	61.1	65.5	68.0	57.0	50.9	55.2
C13	101.6	99.7	103.0	101.1	97.5	95.9	101.1	95.8	93.6	93.8	100.6	101.2	94.3
C14	97.4	96.1	99.5	95.5	92.2	93.6	95.1	90.3	91.4	91.5	92.5	92.4	89.8
C15	87.1	92.2	91.5	99.0	90.4	99.2	104.0	98.5	101.1	100.1	96.3	93.4	94.1
C16	84.0	83.8	84.4	87.5	87.8	79.5	79.4	82.3	82.5	78.5	77.0	75.2	80.0
C17	101.2	104.3	103.9	96.5	103.2	98.7	101.0	100.1	103.1	104.5	103.1	101.0	100.4
C18	100.2	102.5	99.5	98.6	105.4	98.0	103.5	105.6	108.1	105.0	102.6	106.8	102.5
C19
C20	123.6	123.6	122.3	124.0	113.9	110.7	109.3	110.4	114.0	118.4	114.6	119.1	108.9
C21	108.1	98.6	112.4	115.2	109.5	104.5	110.1	108.7	110.0	110.4	114.2	113.6	127.0
C22	124.6	123.9	123.9	127.6	128.5	125.6	125.2	123.8	132.4	130.9	133.5	125.6	131.0
C23	101.0	104.1	104.9	103.0	116.8	108.1	103.8	106.5	106.8	107.3	105.5	107.1	104.0
C24	116.6	119.6	123.3	127.9	124.9	117.8	114.2	111.1	113.2	113.4	115.0	116.6	114.4
C25	126.3	137.2	135.3	123.0	128.7	126.7	133.7	117.0	131.5	125.2	145.1	135.2	111.1
C26	118.3	133.4	135.6	131.0	138.1	138.7	148.8	138.2	135.4	144.2	146.1	149.7	155.5
C27	110.8	109.9	107.5	113.2	111.1	106.5	112.7	115.3	118.3	117.6	114.2	127.0	120.4
C28	117.5	121.0	120.9	125.3	122.8	115.2	115.5	120.2	114.9	116.5	116.0	117.3	120.4
C29	123.0	128.4	127.2	128.1	132.0	131.7	131.6	136.5	140.6	144.7	138.0	138.5	140.9
C30	98.7	97.4	115.8	91.5	121.8	130.2	126.7	124.7	120.7	129.9	120.8	111.9	120.1
C31	100.5	99.5	101.4	112.2	114.4	112.9	113.6	108.7	116.4	111.7	112.0	105.6	109.0
C32	135.8	125.3	137.8	145.4	145.2	137.5	132.8	149.6	136.8	141.3	133.9	129.3	129.8
C33	104.9	90.2	106.4	111.1	112.1	107.4	113.6	111.7	125.8	120.4	108.7	126.5	105.3
D	94.5	90.5	92.2	92.7	93.9	95.4	98.8	92.6	93.0	92.4	92.0	93.1	91.4
D35	94.5	90.5	92.2	92.7	93.9	95.4	98.8	92.6	93.0	92.4	92.0	93.1	91.4

¹ '..' - Confidential data.

Table 4

Industrial Production Indices¹
(Working day adjusted, 2015 = 100)

NACE.BG - 2008	2015	2016	2017				2018								
	IX	IX	IX	X	XI	XII	I	II	III	IV	V	VI	VII	VIII	IX
B_TO_E36	98.3	103.5	106.9	109.6	113.1	113.6	102.4	99.5	110.5	101.3	104.4	112.5	111.6	104.8	106.1
B	106.8	106.3	113.5	118.1	111.4	109.2	97.9	90.3	92.0	89.5	90.5	111.5	93.9	91.5	99.6
B05	118.9	89.4	102.3	115.8	93.0	104.2	94.5	74.5	82.2	54.4	72.0	85.5	75.1	75.6	72.5
B06
B07	99.5	119.0	126.6	125.2	125.2	115.8	116.0	112.9	108.3	121.1	104.9	140.3	114.6	105.6	123.2
B08	107.8	95.3	89.9	98.4	107.8	93.2	70.4	78.9	82.8	104.0	107.2	114.7	96.6	104.4	116.1
B09
C	100.5	107.7	112.7	116.3	118.2	113.5	99.3	99.3	113.5	107.3	113.0	121.0	120.2	110.7	113.6
C10	104.6	108.4	111.6	115.5	112.6	115.6	92.8	89.2	108.1	97.4	103.8	105.7	104.9	105.8	110.2
C11	106.1	111.6	107.5	89.8	82.6	100.7	63.3	67.1	93.4	97.9	113.7	127.6	121.6	128.5	114.1
C12	90.8	66.9	67.3	63.1	62.6	56.3	36.0	50.2	59.9	55.6	67.7	79.4	57.5	46.5	51.0
C13	95.6	97.2	97.7	102.4	107.4	86.6	82.4	93.3	114.1	105.6	106.6	103.1	105.2	80.9	90.2
C14	96.0	101.5	95.0	96.9	99.3	95.7	95.1	91.4	93.7	82.2	83.1	99.0	106.4	89.7	87.2
C15	113.0	108.9	94.7	96.3	93.4	92.9	90.7	97.2	107.5	87.1	86.7	105.0	107.6	83.3	94.7
C16	102.4	88.2	87.9	92.5	91.5	81.5	70.1	69.1	77.7	81.1	82.6	84.8	83.3	75.5	84.1
C17	107.3	104.5	102.0	105.4	104.6	90.0	100.4	95.0	103.8	98.8	105.3	110.4	106.7	100.1	100.8
C18	97.3	101.0	99.4	109.8	112.9	107.6	94.5	89.4	104.8	101.7	105.8	107.0	101.7	100.6	101.0
C19
C20	102.4	109.2	121.1	122.6	126.0	124.2	105.7	103.2	118.9	113.4	113.5	122.6	117.0	115.6	108.9
C21	96.5	93.0	105.0	102.2	119.4	118.9	102.5	102.9	117.4	105.9	107.5	116.6	113.1	102.2	130.9
C22	103.9	111.8	129.4	137.0	128.1	107.6	113.1	113.9	128.3	124.0	135.2	140.5	144.8	121.2	136.4
C23	110.0	100.5	109.2	116.7	113.3	91.9	80.7	85.0	100.2	110.6	115.6	117.6	113.5	114.0	112.8
C24	77.9	92.8	119.5	124.7	127.1	115.4	126.5	105.2	120.5	114.4	110.6	113.1	122.6	110.7	105.1
C25	104.1	146.8	130.5	139.3	146.4	146.2	93.1	110.8	135.7	115.4	127.2	133.9	152.8	134.1	113.1
C26	94.1	108.6	113.4	139.8	144.6	138.9	129.7	128.2	160.5	136.8	132.7	152.0	149.8	131.3	150.4
C27	98.7	103.1	112.7	122.3	116.9	102.4	103.0	100.7	118.6	112.9	117.8	126.2	118.1	113.4	122.6
C28	98.3	97.4	115.7	123.7	128.9	120.6	108.2	110.0	121.8	121.4	115.1	125.3	122.7	104.5	119.4
C29	106.2	107.9	122.9	138.3	135.3	116.9	134.8	133.2	140.9	137.3	141.9	149.4	134.8	117.6	141.0
C30	102.6	82.6	90.9	90.8	115.5	89.1	115.2	128.5	149.5	133.3	140.5	143.3	115.7	89.4	107.2
C31	110.4	110.4	103.8	108.2	111.1	115.0	98.1	100.5	113.9	106.3	116.0	113.3	115.0	103.5	112.0
C32	105.3	133.2	144.4	143.2	145.5	129.3	125.1	119.0	132.9	145.3	135.9	160.2	132.0	132.0	137.5
C33	90.7	111.2	110.5	94.4	124.4	152.3	79.1	89.4	110.9	99.0	120.9	122.4	111.0	124.5	109.3
D	85.4	85.8	83.0	83.9	98.3	116.3	116.9	104.6	107.6	82.8	76.0	79.9	84.7	85.0	79.1
D35	85.4	85.8	83.0	83.9	98.3	116.3	116.9	104.6	107.6	82.8	76.0	79.9	84.7	85.0	79.1

¹ ... - Confidential data.