

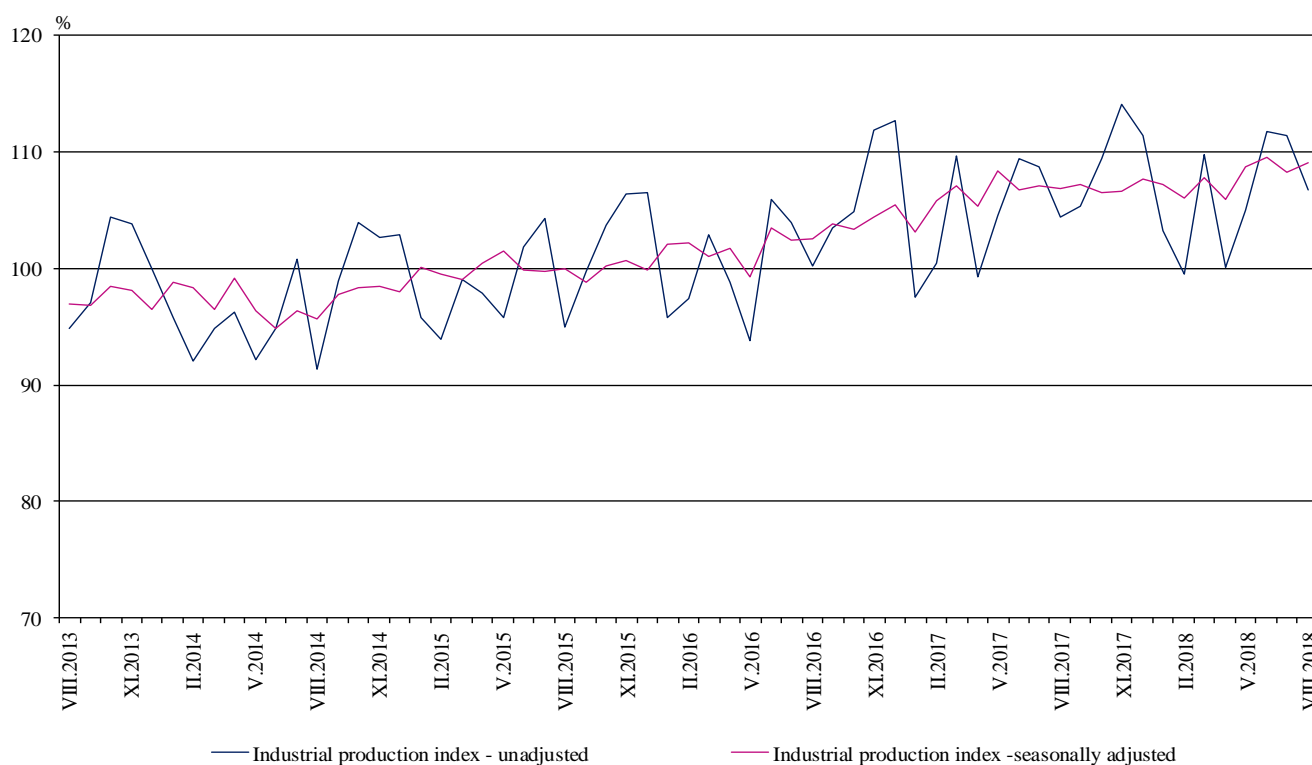


INDUSTRIAL PRODUCTION INDICES IN AUGUST 2018¹

According to the preliminary data the Industrial Production Index², seasonally adjusted³, increased by 0.8% in August 2018 as compared to July 2018.

In August 2018 the working day adjusted⁴ Industrial Production Index rose by 2.3% in comparison with the same month of 2017.

Figure 1. Industrial Production Indices (2015 = 100)



¹ August 2018 data are preliminary. The final data on Industrial Production and Turnover Indices for July 2018 can be found on the NSI website: <http://www.nsi.bg/en>.

² Monthly Industrial Production and Industrial turnover indices measure changes in production and turnover values of industrial enterprises. This information can be used to assess the current economic development and for short-term forecasts. Indices do not measure the actual production level, it aims to measure the average change in value of production between two points of time. Indices are compiled on the base of information collected through representative sampling survey on industrial enterprises. The sample covers enterprises with annual turnover more than 97% of total turnover in industry.

Industrial production indices are calculated at constant base year that is to say they are weighted with the structure of the value added at factor costs in the base year.

³ Seasonal adjustment is a statistical method, which eliminates the seasonal component of time series.

⁴ Working day adjustment is an adjustment for variations caused by calendar effects, different number of calendar and working days in the months, national holidays and outliers (for example the presence of more non-working days in May could contribute to the decline in the production in some activities).

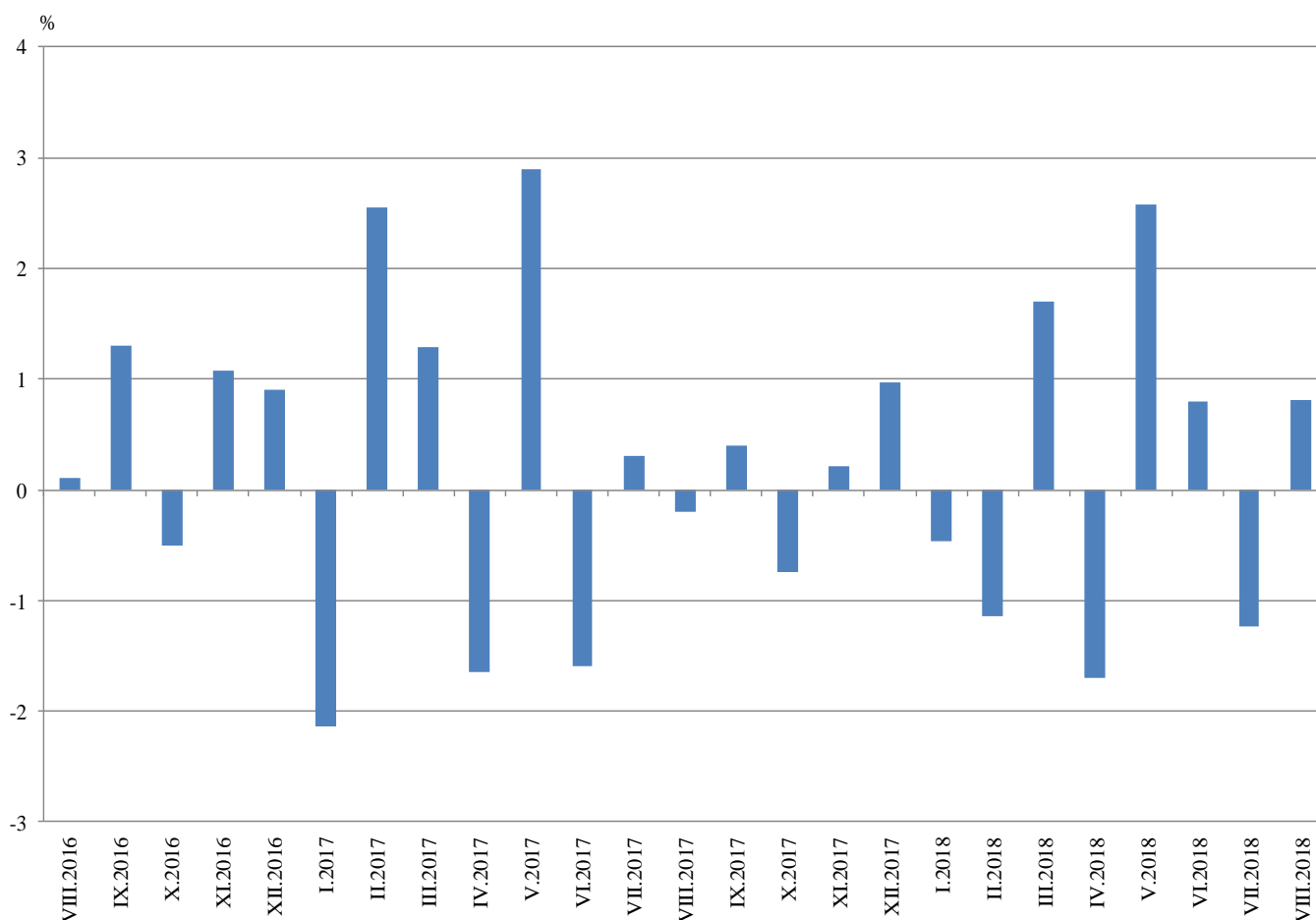


Monthly comparisons

In August 2018 as compared to July 2018, the seasonally adjusted Industrial Production Index increased in the manufacturing by 1.6% and in the electricity, gas, steam and air conditioning supply by 1.3%, while in the mining and quarrying industry the production decreased by 2.1%.

The most significant production increases in the manufacturing were registered in the repair and installation of machinery and equipment by 14.8%, in the manufacture of electrical equipment by 11.5%, in the manufacture of beverages by 4.7%, in the manufacture of chemicals and chemical products by 4.5%. There were decreases in the manufacture of tobacco products by 11.0%, in the manufacture of other transport equipment by 7.5%, in the manufacture of rubber and plastic products by 6.0%, in the manufacture of furniture by 5.5%.

**Figure 2. Changes of Industrial Production Indices compared to the previous month
(Seasonally adjusted)**



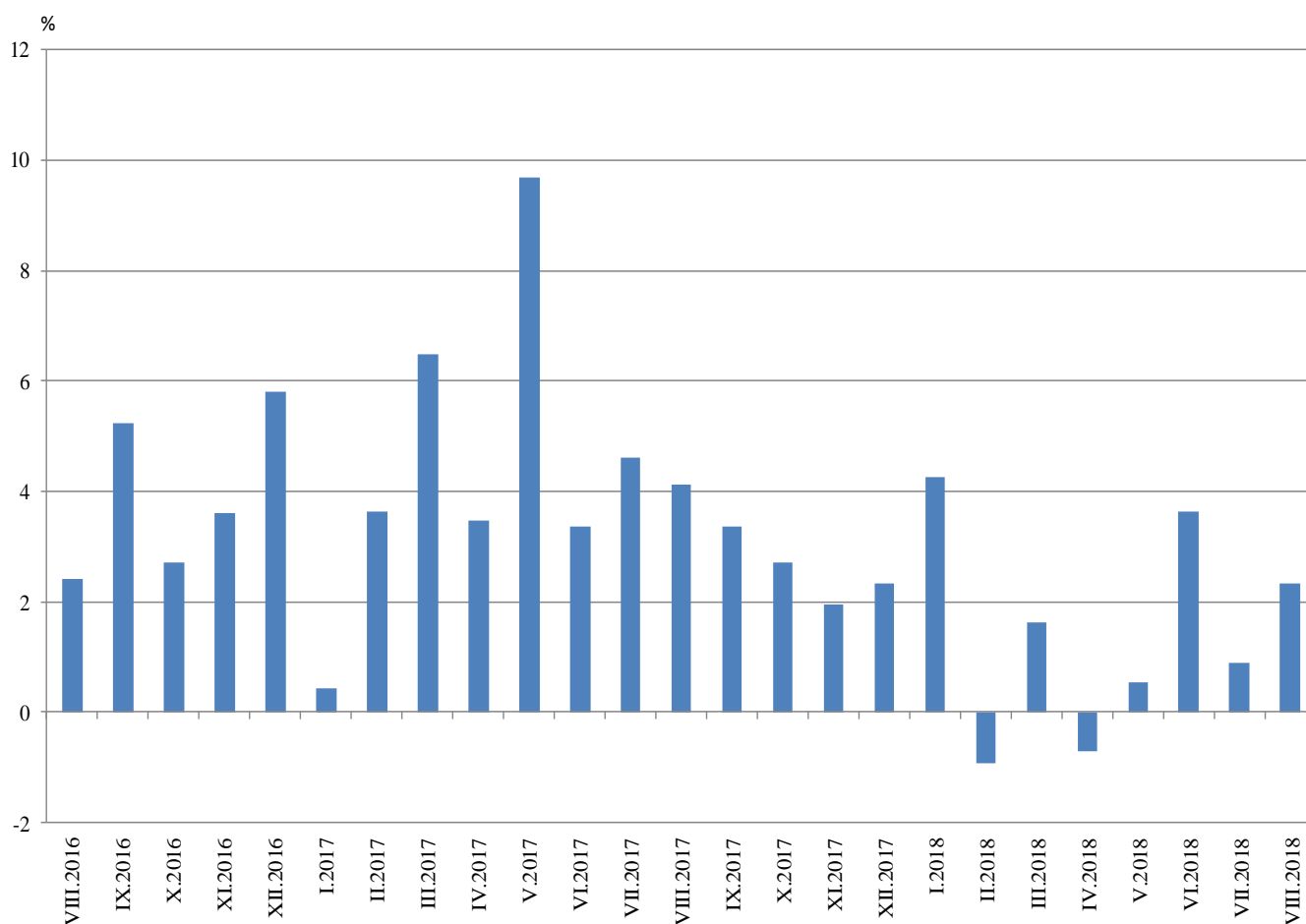


Annual comparisons

On annual basis in August 2018 Industrial Production Index calculated from working day adjusted data rose in the manufacturing by 5.0%, while the production fell in the mining and quarrying industry by 17.4% and in the electricity, gas, steam and air conditioning supply by 2.2%.

In the manufacturing, the more considerable increases compared to the same month of the previous year were registered in the repair and installation of machinery and equipment by 32.3%, in the manufacture of electrical equipment by 26.1%, in the manufacture of motor vehicles, trailers and semi-trailers by 23.1%, in the manufacture of other transport equipment by 15.2%. Decreases were seen in the manufacture of tobacco products by 37.9%, in the manufacture of chemicals and chemical products by 8.7%, in the manufacture of wood and of products of wood and cork, except furniture; manufacture of articles of straw and plaiting materials by 7.7%.

Figure 3. Changes of Industrial Production Indices compared to the same month of the previous year (Working day adjusted)



Annex

Table 1
Changes of Industrial Production Indices compared to the previous month^{1,2}
(Per cent)

Economic activities	NACE.BG - 2008	2018					
		III	IV	V	VI	VII	VIII
Industry	B_TO_E36	1.7	-1.7	2.6	0.8	-1.2	0.8
Mining and quarrying	B	0.0	-0.6	1.5	18.8	-17.7	-2.1
Mining of coal and lignite	B05	23.9	-20.8	20.1	16.7	-20.6	-3.4
Extraction of crude petroleum and natural gas	B06
Mining of metal ores	B07	-10.0	9.5	-12.8	33.7	-18.4	-8.0
Other mining and quarrying	B08	-11.8	12.1	-1.6	0.3	-13.8	7.3
Mining support service activities	B09
Manufacturing	C	0.9	-1.7	3.3	0.4	-0.4	1.6
Manufacture of food products	C10	6.1	-7.3	3.5	-2.6	0.7	0.6
Manufacture of beverages	C11	2.3	-1.5	7.9	-1.3	-6.7	4.7
Manufacture of tobacco products	C12	-5.2	1.1	7.4	3.7	-16.2	-11.0
Manufacture of textiles	C13	5.4	-5.2	-2.3	0.2	7.3	1.4
Manufacture of wearing apparel	C14	1.7	-5.1	1.3	0.0	1.2	0.0
Manufacture of leather and related products	C15	4.9	-5.3	2.6	-1.0	-3.8	-1.9
Manufacture of wood and of products of wood and cork, except furniture; manufacture of articles of straw and plaiting materials	C16	-0.1	3.7	0.2	-4.9	-1.9	-2.2
Manufacture of paper and paper products	C17	2.2	-0.9	3.0	1.4	-1.3	-2.0
Printing and reproduction of recorded media	C18	5.6	2.0	2.3	-2.9	-2.3	4.3
Manufacture of coke and refined petroleum products	C19
Manufacture of chemicals and chemical products	C20	-1.3	1.0	3.2	3.9	-3.2	4.5
Manufacture of basic pharmaceutical products and pharmaceutical preparations	C21	5.4	-1.3	1.2	0.3	3.4	-1.7
Manufacture of rubber and plastic products	C22	-0.3	-1.1	6.9	-1.2	2.0	-6.0
Manufacture of other non-metallic mineral products	C23	-4.0	2.6	0.3	0.5	-1.7	1.6
Manufacture of basic metals	C24	-3.1	-2.7	1.9	0.2	1.4	2.7
Manufacture of fabricated metal products, except machinery and equipment	C25	5.5	-12.5	12.5	-4.8	15.9	-2.6
Manufacture of computer, electronic and optical products	C26	7.3	-7.1	-2.0	6.5	1.4	2.1
Manufacture of electrical equipment	C27	5.8	2.4	2.6	-0.6	-2.9	11.5
Manufacture of machinery and equipment n.e.c.	C28	0.3	4.0	-4.4	1.3	-0.4	1.7
Manufacture of motor vehicles, trailers and semi-trailers	C29	-0.1	3.7	3.0	2.9	-4.6	0.6
Manufacture of other transport equipment	C30	-2.7	-1.6	-3.2	7.6	-7.0	-7.5
Manufacture of furniture	C31	0.7	-4.3	7.0	-4.0	0.3	-5.5
Other manufacturing	C32	-3.5	12.7	-8.6	3.3	-5.3	-3.5
Repair and installation of machinery and equipment	C33	5.8	-1.7	12.6	-4.2	-9.7	14.8
Electricity, gas, steam and air conditioning supply	D	3.6	-6.3	0.4	-0.7	-0.5	1.3
Electricity, gas, steam and air conditioning supply	D35	3.6	-6.3	0.4	-0.7	-0.5	1.3

¹ Seasonally adjusted.

² ‘.’ - Confidential data.

Table 2

Changes of Industrial Production Indices compared to the same month of the previous year^{1,2}
(Per cent)

Economic activities	NACE.BG - 2008	2018					
		III	IV	V	VI	VII	VIII
Industry	B_TO_E36	1.6	-0.7	0.5	3.6	0.9	2.3
Mining and quarrying	B	-8.9	-2.3	-8.0	9.1	-8.8	-17.4
Mining of coal and lignite	B05	-5.8	-30.9	-22.1	4.9	-12.5	-18.1
Extraction of crude petroleum and natural gas	B06
Mining of metal ores	B07	-6.2	17.4	-0.8	19.3	-2.9	-17.0
Other mining and quarrying	B08	13.0	32.3	26.6	18.5	12.9	18.9
Mining support service activities	B09
Manufacturing	C	0.6	-1.1	1.1	3.8	2.0	5.0
Manufacture of food products	C10	6.9	2.3	0.3	-7.0	-3.3	1.3
Manufacture of beverages	C11	-1.9	1.5	9.9	10.3	-4.9	7.8
Manufacture of tobacco products	C12	-27.1	-19.4	-20.9	-5.8	-13.3	-37.9
Manufacture of textiles	C13	1.7	-4.4	-7.7	-7.7	2.8	5.6
Manufacture of wearing apparel	C14	-8.4	-9.1	-7.4	-7.4	-3.7	-1.1
Manufacture of leather and related products	C15	4.3	3.1	0.8	4.5	10.2	2.4
Manufacture of wood and of products of wood and cork, except furniture; manufacture of articles of straw and plaiting materials	C16	-11.7	-8.5	-9.7	-11.9	-9.4	-7.7
Manufacture of paper and paper products	C17	-4.6	-1.2	-2.3	3.4	4.1	-1.9
Printing and reproduction of recorded media	C18	-5.2	5.9	3.1	3.2	-3.7	8.0
Manufacture of coke and refined petroleum products	C19
Manufacture of chemicals and chemical products	C20	-4.3	-9.2	-3.8	5.3	-8.4	-8.7
Manufacture of basic pharmaceutical products and pharmaceutical preparations	C21	6.1	14.9	4.0	-2.4	4.8	4.8
Manufacture of rubber and plastic products	C22	2.6	2.0	12.0	11.5	16.9	1.8
Manufacture of other non-metallic mineral products	C23	-1.0	6.0	6.0	10.0	4.7	5.1
Manufacture of basic metals	C24	-5.4	1.7	-3.6	-4.2	9.8	15.0
Manufacture of fabricated metal products, except machinery and equipment	C25	-2.0	-24.9	-7.6	-5.2	-6.7	2.0
Manufacture of computer, electronic and optical products	C26	9.2	6.1	11.7	11.0	14.5	11.8
Manufacture of electrical equipment	C27	10.4	13.3	12.1	11.7	7.4	26.1
Manufacture of machinery and equipment n.e.c.	C28	1.1	5.5	-9.8	1.4	-1.8	1.0
Manufacture of motor vehicles, trailers and semi-trailers	C29	9.5	23.2	20.0	31.3	16.9	23.1
Manufacture of other transport equipment	C30	48.2	55.9	27.2	33.7	33.1	15.2
Manufacture of furniture	C31	6.1	0.4	7.3	6.3	10.0	2.0
Other manufacturing	C32	-2.9	15.9	8.5	7.2	15.7	-7.0
Repair and installation of machinery and equipment	C33	19.7	15.4	15.2	24.7	-10.4	32.3
Electricity, gas, steam and air conditioning supply	D	7.8	-3.6	-5.1	-4.9	-4.9	-2.2
Electricity, gas, steam and air conditioning supply	D35	7.8	-3.6	-5.1	-4.9	-4.9	-2.2

¹ Working day adjusted.

² ‘.’ - Confidential data.

Table 3

Industrial Production Indices¹
(Seasonally adjusted, 2015 = 100)

NACE.BG - 2008	2017					2018							
	VIII	IX	X	XI	XII	I	II	III	IV	V	VI	VII	VIII
B_TO_E36	106.8	107.3	106.5	106.7	107.7	107.2	106.0	107.8	106.0	108.7	109.6	108.2	109.1
B	112.3	109.5	104.4	102.9	100.4	101.0	96.3	96.3	95.7	97.1	115.4	95.0	93.0
B05	94.7	95.2	93.6	79.4	86.0	81.6	74.8	92.7	73.5	88.2	102.9	81.7	79.0
B06
B07	129.5	126.9	117.5	120.0	110.0	124.4	122.1	110.0	120.4	104.9	140.3	114.6	105.5
B08	79.5	82.5	84.8	95.1	89.8	113.5	105.3	92.9	104.2	102.6	102.9	88.7	95.1
B09
C	110.1	111.1	111.1	112.0	114.2	114.2	110.5	111.4	109.5	113.1	113.5	113.1	114.9
C10	102.8	103.7	104.8	105.1	110.7	110.1	103.6	110.0	101.9	105.5	102.8	103.5	104.2
C11	93.9	99.0	100.6	93.5	97.0	102.6	96.4	98.6	97.1	104.8	103.4	96.5	101.0
C12	71.4	68.8	65.5	64.0	57.7	57.4	63.7	60.4	61.1	65.5	68.0	57.0	50.7
C13	97.6	101.6	99.7	103.0	101.1	97.5	95.9	101.1	95.8	93.6	93.8	100.6	102.1
C14	93.8	97.4	96.1	99.5	95.5	92.2	93.6	95.1	90.3	91.4	91.5	92.5	92.6
C15	84.7	87.1	92.2	91.5	99.0	90.4	99.2	104.0	98.5	101.1	100.1	96.3	94.5
C16	81.0	84.0	83.8	84.4	87.5	87.8	79.5	79.4	82.3	82.5	78.5	77.0	75.3
C17	102.6	101.2	104.3	103.9	96.5	103.2	98.7	101.0	100.1	103.1	104.5	103.1	101.1
C18	99.8	100.2	102.5	99.5	98.6	105.4	98.0	103.5	105.6	108.1	105.0	102.6	107.0
C19
C20	127.8	123.6	123.6	122.3	124.0	113.9	110.7	109.3	110.4	114.0	118.4	114.6	119.8
C21	111.0	108.1	98.6	112.4	115.2	109.5	104.5	110.1	108.7	110.0	110.4	114.2	112.2
C22	121.5	124.6	123.9	123.9	127.6	128.5	125.6	125.2	123.8	132.4	130.9	133.5	125.5
C23	102.5	101.0	104.1	104.9	103.0	116.8	108.1	103.8	106.5	106.8	107.3	105.5	107.2
C24	109.7	116.6	119.6	123.3	127.9	124.9	117.8	114.2	111.1	113.2	113.4	115.0	118.1
C25	138.7	126.3	137.2	135.3	123.0	128.7	126.7	133.7	117.0	131.5	125.2	145.1	141.3
C26	134.1	118.3	133.4	135.6	131.0	138.1	138.7	148.8	138.2	135.4	144.2	146.1	149.2
C27	103.8	110.8	109.9	107.5	113.2	111.1	106.5	112.7	115.3	118.3	117.6	114.2	127.3
C28	117.0	117.5	121.0	120.9	125.3	122.8	115.2	115.5	120.2	114.9	116.5	116.0	118.0
C29	116.1	123.0	128.4	127.2	128.1	132.0	131.7	131.6	136.5	140.6	144.7	138.0	138.8
C30	90.7	98.7	97.4	115.8	91.5	121.8	130.2	126.7	124.7	120.7	129.9	120.8	111.7
C31	102.3	100.5	99.5	101.4	112.2	114.4	112.9	113.6	108.7	116.4	111.7	112.0	105.9
C32	138.0	135.8	125.3	137.8	145.4	145.2	137.5	132.8	149.6	136.8	141.3	133.9	129.2
C33	95.2	104.9	90.2	106.4	111.1	112.1	107.4	113.6	111.7	125.8	120.4	108.7	124.9
D	95.2	94.5	90.5	92.2	92.7	93.9	95.4	98.8	92.6	93.0	92.4	92.0	93.2
D35	95.2	94.5	90.5	92.2	92.7	93.9	95.4	98.8	92.6	93.0	92.4	92.0	93.2

¹ '..' - Confidential data.

Table 4

Industrial Production Indices¹
(Working day adjusted, 2015 = 100)

NACE.BG - 2008	2015	2016	2017					2018							
	VIII	VIII	VIII	IX	X	XI	XII	I	II	III	IV	V	VI	VII	VIII
B_TO_E36	96.6	99.0	103.1	106.9	109.6	113.1	113.6	102.4	99.5	110.5	101.3	104.4	112.5	111.6	105.4
B	96.4	98.0	110.6	113.5	118.1	111.4	109.2	97.9	90.3	92.0	89.5	90.5	111.5	93.9	91.4
B05	106.1	80.6	92.3	102.3	115.8	93.0	104.2	94.5	74.5	82.2	54.4	72.0	85.5	75.1	75.6
B06
B07	90.1	108.2	127.1	126.6	125.2	125.2	115.8	116.0	112.9	108.3	121.1	104.9	140.3	114.6	105.5
B08	105.6	107.9	87.4	89.9	98.4	107.8	93.2	70.4	78.9	82.8	104.0	107.2	114.7	96.6	103.9
B09
C	97.3	100.9	106.1	112.7	116.3	118.2	113.5	99.3	99.3	113.5	107.3	113.0	121.0	120.2	111.5
C10	100.3	109.7	106.0	111.6	115.5	112.6	115.6	92.8	89.2	108.1	97.4	103.8	105.7	104.9	107.3
C11	127.7	136.1	118.0	107.5	89.8	82.6	100.7	63.3	67.1	93.4	97.9	113.7	127.6	121.6	127.3
C12	90.9	75.7	73.9	67.3	63.1	62.6	56.3	36.0	50.2	59.9	55.6	67.7	79.4	57.5	45.9
C13	79.9	77.8	76.7	97.7	102.4	107.4	86.6	82.4	93.3	114.1	105.6	106.6	103.1	105.2	81.0
C14	98.2	96.7	90.6	95.0	96.9	99.3	95.7	95.1	91.4	93.7	82.2	83.1	99.0	106.4	89.6
C15	104.4	84.1	82.3	94.7	96.3	93.4	92.9	90.7	97.2	107.5	87.1	86.7	105.0	107.6	84.2
C16	99.5	90.5	82.0	87.9	92.5	91.5	81.5	70.1	69.1	77.7	81.1	82.6	84.8	83.3	75.7
C17	96.1	105.1	102.0	102.0	105.4	104.6	90.0	100.4	95.0	103.8	98.8	105.3	110.4	106.7	100.1
C18	93.7	94.6	93.2	99.4	109.8	112.9	107.6	94.5	89.4	104.8	101.7	105.8	107.0	101.7	100.6
C19
C20	107.4	107.2	126.6	121.1	122.6	126.0	124.2	105.7	103.2	118.9	113.4	113.5	122.6	117.0	115.6
C21	87.3	79.7	97.1	105.0	102.2	119.4	118.9	102.5	102.9	117.4	105.9	107.5	116.6	113.1	101.7
C22	97.1	106.9	119.2	129.4	137.0	128.1	107.6	113.1	113.9	128.3	124.0	135.2	140.5	144.8	121.3
C23	106.5	102.3	108.8	109.2	116.7	113.3	91.9	80.7	85.0	100.2	110.6	115.6	117.6	113.5	114.4
C24	93.5	90.4	96.4	119.5	124.7	127.1	115.4	126.5	105.2	120.5	114.4	110.6	113.1	122.6	110.9
C25	94.9	119.4	137.6	130.5	139.3	146.4	146.2	93.1	110.8	135.7	115.4	127.2	133.9	152.8	140.4
C26	90.0	94.0	117.2	113.4	139.8	144.6	138.9	129.7	128.2	160.5	136.8	132.7	152.0	149.8	131.1
C27	90.6	89.3	89.8	112.7	122.3	116.9	102.4	103.0	100.7	118.6	112.9	117.8	126.2	118.1	113.3
C28	90.0	89.9	104.5	115.7	123.7	128.9	120.6	108.2	110.0	121.8	121.4	115.1	125.3	122.7	105.5
C29	77.5	93.8	95.6	122.9	138.3	135.3	116.9	134.8	133.2	140.9	137.3	141.9	149.4	134.8	117.6
C30	85.9	91.7	77.6	90.9	90.8	115.5	89.1	115.2	128.5	149.5	133.3	140.5	143.3	115.7	89.3
C31	96.2	101.0	101.7	103.8	108.2	111.1	115.0	98.1	100.5	113.9	106.3	116.0	113.3	115.0	103.7
C32	103.1	129.0	141.7	144.4	143.2	145.5	129.3	125.1	119.0	132.9	145.3	135.9	160.2	132.0	131.8
C33	94.9	89.1	92.4	110.5	94.4	124.4	152.3	79.1	89.4	110.9	99.0	120.9	122.4	111.0	122.3
D	91.4	90.2	87.3	83.0	83.9	98.3	116.3	116.9	104.6	107.6	82.8	76.0	79.9	84.7	85.3
D35	91.4	90.2	87.3	83.0	83.9	98.3	116.3	116.9	104.6	107.6	82.8	76.0	79.9	84.7	85.3

¹ ... - Confidential data.