

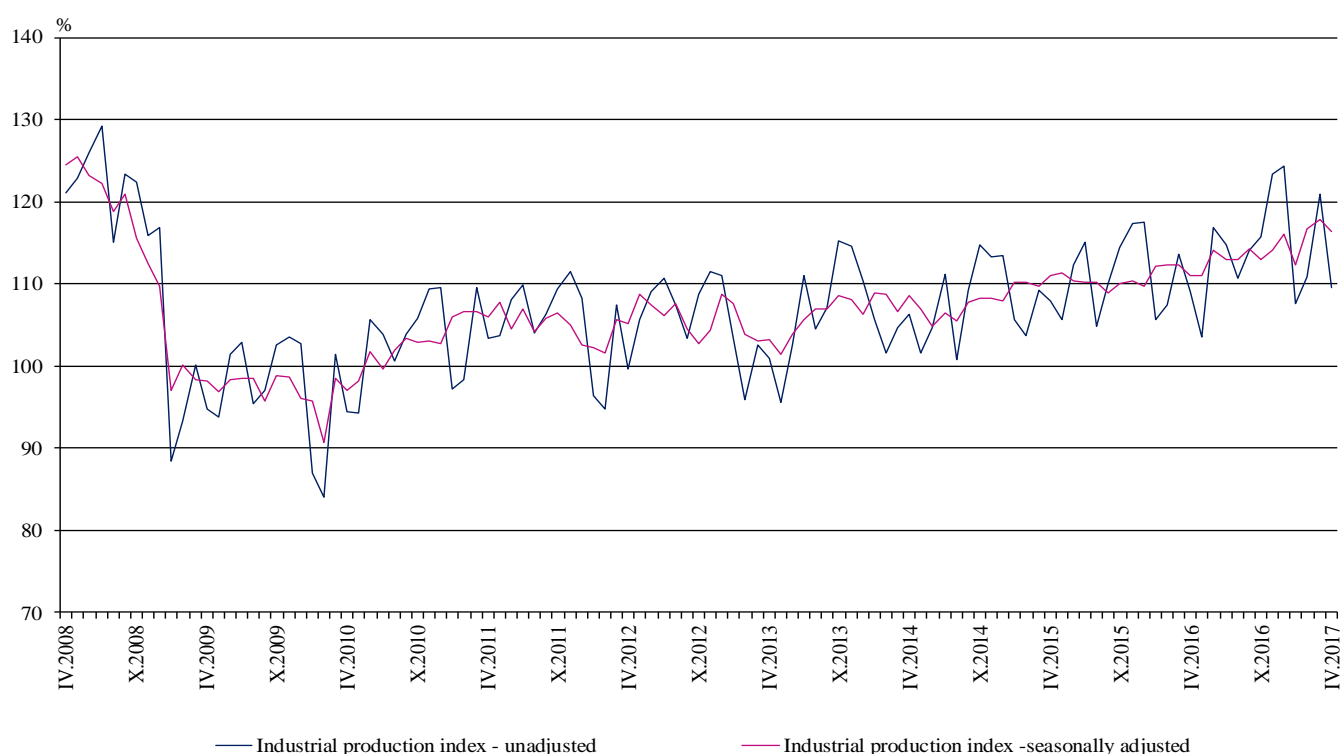


INDUSTRIAL PRODUCTION INDICES IN APRIL 2017¹

According to the preliminary data the Industrial Production Index², seasonally adjusted³, decreased by 1.2% in April 2017 as compared to March 2017.

In April 2017 working day adjusted⁴ Industrial Production Index rose by 4.8% in comparison with the same month of 2016.

Figure 1. Industrial Production Indices (2010 = 100)



¹ April 2017 data are preliminary. The final data on Industrial Production and Turnover Indices for March 2017 can be found on the NSI website: <http://www.nsi.bg/en>.

² Monthly Industrial Production and Industrial turnover indices measure changes in production and turnover values of industrial enterprises. This information can be used to access the current economic development and for short-term forecasts. Indices do not measure the actual production level, it aims to measure the average change in value of production between two points of time. Indices are compiled on the base of information collected through representative sampling survey on industrial enterprises. The sample covers enterprises with annual turnover more than 97% of total turnover in industry.

Industrial production indices are calculated at constant base year that is to say they are weighted with the structure of the value added at factor costs in the base year.

³ Seasonal adjustment is a statistical method, which eliminates the seasonal component of time series.

⁴ Working day adjustment is an adjustment for variations caused by calendar effects, different number of calendar and working days in the months, national holidays and outliers (for example the presence of more non-working days in May could contribute to the decline in the production in some activities).

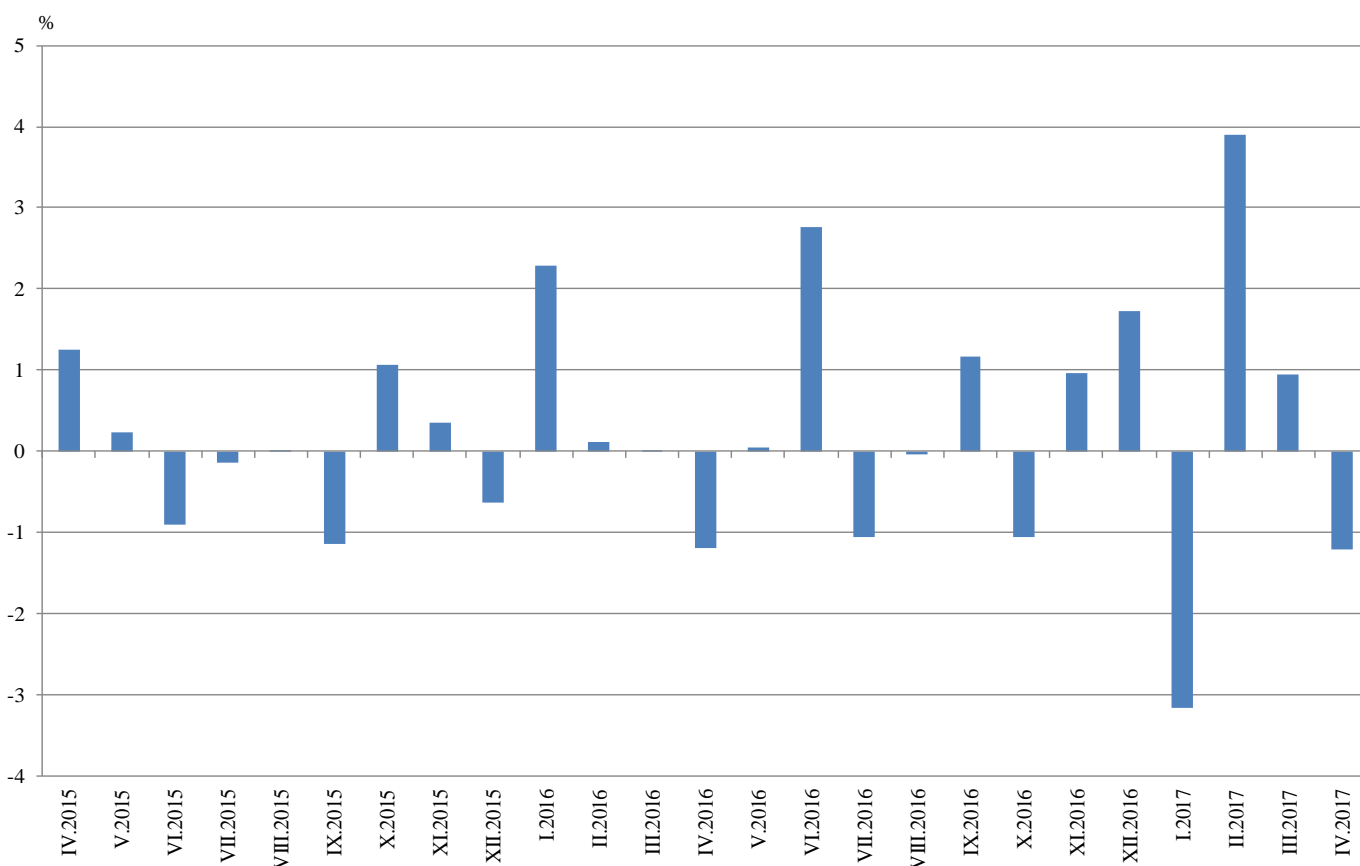


Monthly comparisons

In April 2017 as compared to March 2017, the seasonally adjusted Industrial Production Index decreased in the mining and quarrying industry by 2.9% and in the manufacturing by 1.7%, while in the electricity, gas, steam and air conditioning supply an increase by 3.6% was seen.

The most significant decreases of production in the manufacturing were registered in the manufacture of basic pharmaceutical products and pharmaceutical preparations by 10.9%, in the printing and reproduction of recorded media by 8.0%, in the manufacture of wearing apparel by 6.7%, in the manufacture of computer, electronic and optical products by 6.5%. There were increases in the manufacture of fabricated metal products, except machinery and equipment by 17.9%, in the manufacture of chemicals and chemical products by 5.3%, in the manufacture of tobacco products by 4.5%, in the manufacture of wood and of products of wood and cork, except furniture, manufacture of articles of straw and plaiting materials by 3.2%.

**Figure 2. Changes of Industrial Production Indices compared to the previous month
(Seasonally adjusted)**



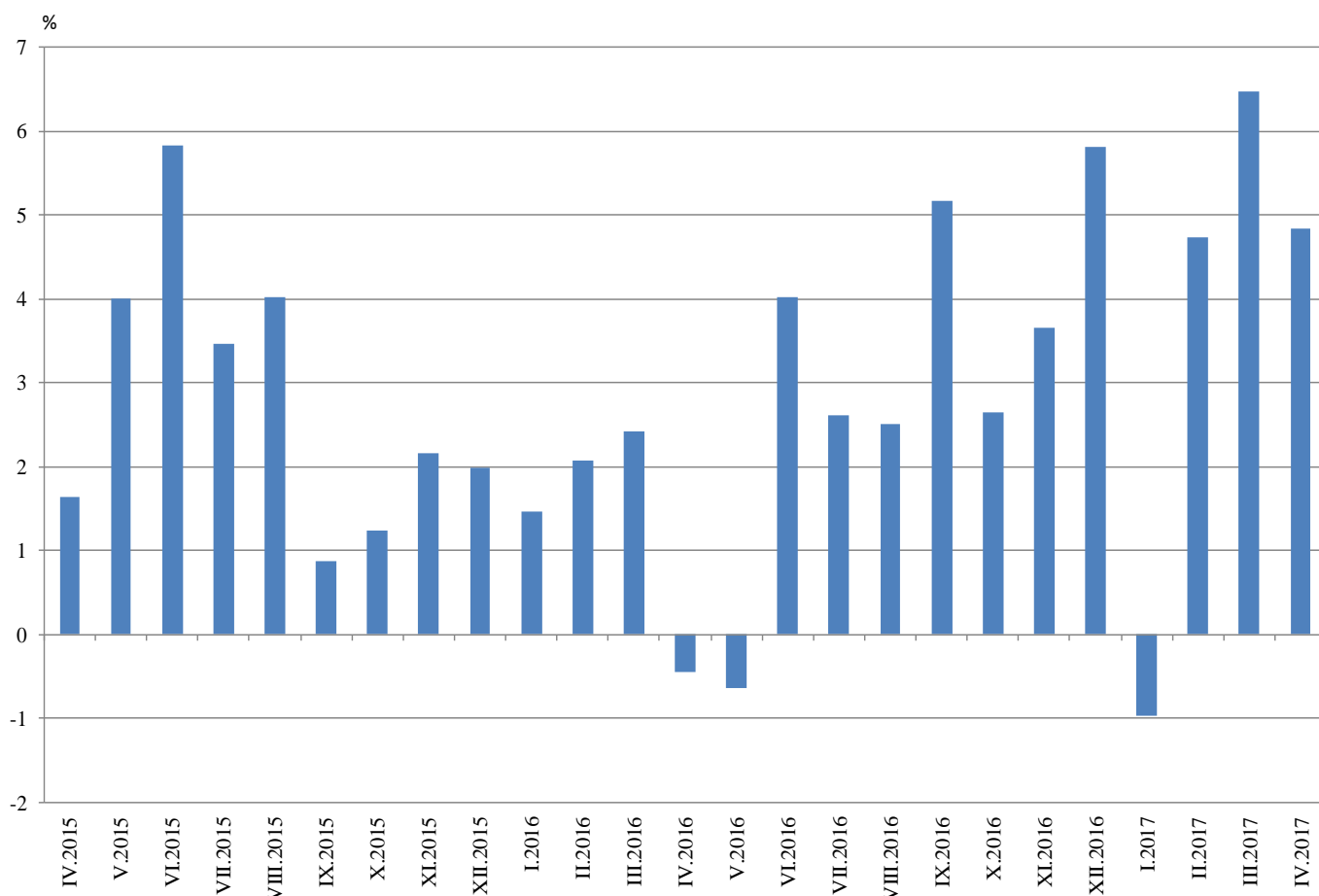


Annual comparisons

On annual basis in April 2017 Industrial Production Index calculated from working day adjusted data increased in the manufacturing by 8.4%, while decreases were registered in the electricity, gas, steam and air conditioning supply by 4.2% and in the mining and quarrying industry by 2.0%.

In the manufacturing, the more significant increases compared to the same month of the previous year were seen in the manufacture of fabricated metal products, except machinery and equipment by 43.1%, in the manufacture of tobacco products by 35.0%, in the manufacture of computer, electronic and optical products by 30.6%, in the manufacture of chemicals and chemical products by 22.0%. Decreases were registered in the manufacture of other transport equipment by 23.5%, in the manufacture of beverages by 9.1%, in the manufacture of basic pharmaceutical products and pharmaceutical preparations by 7.7%, in the manufacture of wearing apparel by 6.0%.

Figure 3. Changes of Industrial Production Indices compared to the same month of the previous year (Working day adjusted)



Annex

Table 1
Changes of Industrial Production Indices compared to the previous month^{1,2}
(Per cent)

Economic activities	NACE.BG - 2008	2016		2017			
		XI	XII	I	II	III	IV
Industry	B_TO_E36	1.0	1.7	-3.2	3.9	0.9	-1.2
Mining and quarrying	B	3.5	-0.5	-0.3	5.1	-5.9	-2.9
Mining of coal and lignite	B05	11.1	-11.5	-3.0	19.9	-8.1	-3.6
Extraction of crude petroleum and natural gas	B06
Mining of metal ores	B07	9.5	-3.2	-8.0	4.0	0.7	-6.7
Other mining and quarrying	B08	4.9	-6.1	-4.8	18.7	-11.8	0.2
Mining support service activities	B09
Manufacturing	C	1.4	2.1	-5.0	6.3	2.6	-1.7
Manufacture of food products	C10	0.3	-2.4	-1.8	6.3	-1.3	-4.5
Manufacture of beverages	C11	-1.1	-2.2	-11.4	12.6	0.0	-3.8
Manufacture of tobacco products	C12	2.3	3.3	-3.3	1.3	-0.5	4.5
Manufacture of textiles	C13	-0.1	-7.0	-2.6	16.1	-5.2	2.1
Manufacture of wearing apparel	C14	-7.1	4.7	-0.5	4.1	2.7	-6.7
Manufacture of leather and related products	C15	4.6	-7.1	2.6	-1.2	9.2	-4.8
Manufacture of wood and of products of wood and cork, except furniture; manufacture of articles of straw and plaiting materials	C16	-2.1	1.3	3.3	9.9	-8.1	3.2
Manufacture of paper and paper products	C17	7.1	-7.0	1.8	0.5	-1.7	-5.5
Printing and reproduction of recorded media	C18	1.3	-6.4	3.1	1.2	5.9	-8.0
Manufacture of coke and refined petroleum products	C19
Manufacture of chemicals and chemical products	C20	-5.6	-5.3	2.2	10.0	-3.6	5.3
Manufacture of basic pharmaceutical products and pharmaceutical preparations	C21	1.9	-4.9	7.4	-4.2	4.1	-10.9
Manufacture of rubber and plastic products	C22	4.4	-3.9	0.6	4.0	4.7	-3.4
Manufacture of other non-metallic mineral products	C23	-1.3	0.8	-3.6	10.1	0.4	-0.3
Manufacture of basic metals	C24	2.2	2.3	-2.4	7.1	2.5	-5.2
Manufacture of fabricated metal products, except machinery and equipment	C25	13.3	13.0	-34.4	35.5	4.8	17.9
Manufacture of computer, electronic and optical products	C26	-2.3	-7.6	23.6	-8.6	13.2	-6.5
Manufacture of electrical equipment	C27	1.1	-2.3	-1.2	1.5	2.8	-4.1
Manufacture of machinery and equipment n.e.c.	C28	7.3	1.1	-7.0	7.5	1.1	-0.5
Manufacture of motor vehicles, trailers and semi-trailers	C29	1.1	1.7	1.0	-0.3	2.8	-4.9
Manufacture of other transport equipment	C30	0.5	2.3	18.9	-12.6	-2.8	-4.7
Manufacture of furniture	C31	3.7	-5.9	-6.2	6.7	4.8	-0.3
Other manufacturing	C32	9.0	3.1	13.1	-8.7	-5.4	4.4
Repair and installation of machinery and equipment	C33	-1.6	5.6	-11.7	9.7	-0.9	2.6
Electricity, gas, steam and air conditioning supply	D	-1.4	1.8	8.6	-7.7	-5.8	3.6
Electricity, gas, steam and air conditioning supply	D35	-1.4	1.8	8.6	-7.7	-5.8	3.6

¹ Seasonally adjusted.

² ".." - Confidential data.

Table 2
Changes of Industrial Production Indices compared to the same month of the previous year^{1,2}
(Per cent)

Economic activities	NACE.BG - 2008	2016		2017			
		XI	XII	I	II	III	IV
Industry	B_TO_E36	3.7	5.8	-1.0	4.7	6.5	4.8
Mining and quarrying	B	7.8	5.3	-2.9	14.9	4.2	-2.0
Mining of coal and lignite	B05	15.6	-7.8	-8.3	25.0	35.8	18.6
Extraction of crude petroleum and natural gas	B06
Mining of metal ores	B07	10.9	22.9	1.0	25.3	-1.6	-7.3
Other mining and quarrying	B08	-7.9	-27.1	-11.6	-1.6	-17.3	-12.9
Mining support service activities	B09
Manufacturing	C	4.1	7.8	-3.3	5.2	10.3	8.4
Manufacture of food products	C10	2.6	1.2	-5.9	2.5	3.0	-1.7
Manufacture of beverages	C11	6.5	6.8	-17.3	-3.3	0.5	-9.1
Manufacture of tobacco products	C12	-19.3	-16.2	-29.1	-16.3	-3.1	35.0
Manufacture of textiles	C13	-0.3	-6.3	-15.2	-1.2	-5.2	0.2
Manufacture of wearing apparel	C14	-11.1	-4.9	-7.6	0.1	7.3	-6.0
Manufacture of leather and related products	C15	7.8	-5.0	-4.1	-5.8	5.7	-4.9
Manufacture of wood and of products of wood and cork, except furniture; manufacture of articles of straw and plaiting materials	C16	-16.6	-19.1	-11.4	-4.0	-10.3	1.8
Manufacture of paper and paper products	C17	2.9	3.4	11.6	4.5	1.8	-4.3
Printing and reproduction of recorded media	C18	-6.0	-2.3	-8.0	-6.8	5.0	1.2
Manufacture of coke and refined petroleum products	C19
Manufacture of chemicals and chemical products	C20	17.1	12.8	10.4	10.5	17.6	22.0
Manufacture of basic pharmaceutical products and pharmaceutical preparations	C21	0.4	-6.3	4.7	-7.1	2.5	-7.7
Manufacture of rubber and plastic products	C22	16.0	10.3	8.1	7.9	14.1	9.9
Manufacture of other non-metallic mineral products	C23	-7.4	-11.2	-13.6	5.2	4.0	2.4
Manufacture of basic metals	C24	15.3	27.2	10.3	30.2	52.5	8.7
Manufacture of fabricated metal products, except machinery and equipment	C25	11.5	34.4	-29.0	13.6	15.6	43.1
Manufacture of computer, electronic and optical products	C26	18.7	15.3	28.3	27.1	43.5	30.6
Manufacture of electrical equipment	C27	0.1	-1.3	-2.3	-5.2	-0.1	-1.5
Manufacture of machinery and equipment n.e.c.	C28	17.2	17.9	2.2	12.5	12.5	19.0
Manufacture of motor vehicles, trailers and semi-trailers	C29	8.7	17.3	13.3	6.0	8.1	2.4
Manufacture of other transport equipment	C30	-24.7	-16.5	14.1	-9.8	-16.4	-23.5
Manufacture of furniture	C31	9.7	4.1	-10.2	-0.6	1.7	3.9
Other manufacturing	C32	23.2	16.6	24.5	25.0	10.1	29.8
Repair and installation of machinery and equipment	C33	-13.3	9.6	-16.2	10.7	12.3	5.2
Electricity, gas, steam and air conditioning supply	D	0.4	-0.1	6.9	2.1	-5.0	-4.2
Electricity, gas, steam and air conditioning supply	D35	0.4	-0.1	6.9	2.1	-5.0	-4.2

¹ Working day adjusted.

² ".." - Confidential data.



Table 3

Industrial Production Indices¹
(Seasonally adjusted, 2010 = 100)

NACE.BG - 2008	2016									2017			
	IV	V	VI	VII	VIII	IX	X	XI	XII	I	II	III	IV
B_TO_E36	111.0	111.1	114.1	112.9	112.9	114.2	113.0	114.1	116.0	112.4	116.7	117.8	116.4
B	99.0	97.9	98.2	100.1	99.1	101.2	101.0	104.5	104.0	103.7	109.0	102.6	99.6
B05	93.2	100.5	95.1	99.6	93.1	93.6	106.2	118.0	104.5	101.4	121.6	111.7	107.7
B06
B07	102.1	92.6	101.9	101.2	94.6	105.5	99.3	108.7	105.2	96.8	100.7	101.4	94.6
B08	107.5	105.6	103.3	105.9	108.7	99.7	95.5	100.1	94.0	89.6	106.3	93.7	93.9
B09
C	115.5	115.4	119.7	118.5	118.5	120.3	118.7	120.3	122.8	116.7	124.1	127.3	125.2
C10	89.8	92.2	91.5	92.5	95.7	90.4	91.9	92.1	89.9	88.3	93.8	92.5	88.4
C11	108.0	96.0	103.2	108.6	105.6	104.1	106.1	105.0	102.7	91.0	102.5	102.4	98.5
C12	62.8	56.9	63.8	79.3	73.3	65.0	76.6	78.4	81.0	78.3	79.4	79.0	82.6
C13	111.8	119.5	110.7	106.6	105.4	109.2	109.1	108.9	101.3	98.7	114.6	108.6	110.9
C14	97.9	98.2	99.1	100.6	93.4	100.5	97.1	90.2	94.5	94.0	97.8	100.4	93.7
C15	77.9	72.3	72.1	73.2	64.4	74.9	71.8	75.1	69.8	71.6	70.8	77.3	73.6
C16	90.9	91.3	89.8	86.8	88.3	82.6	86.2	84.4	85.5	88.3	97.0	89.2	92.1
C17	127.1	127.6	132.1	129.4	132.4	129.0	129.5	138.8	129.0	131.3	132.0	129.8	122.7
C18	113.4	112.4	116.7	118.2	116.0	115.8	120.4	122.0	114.1	117.7	119.1	126.2	116.1
C19
C20	104.8	110.5	105.7	122.1	122.4	118.5	125.0	117.9	111.7	114.2	125.6	121.1	127.5
C21	140.5	140.6	147.0	141.7	138.1	140.7	145.9	148.7	141.4	151.8	145.5	151.5	134.9
C22	142.2	140.3	145.5	142.3	145.5	143.2	147.5	154.1	148.0	148.9	154.9	162.2	156.6
C23	125.7	120.8	123.5	119.9	122.8	119.3	122.0	120.4	121.4	117.0	128.8	129.3	128.9
C24	86.8	84.1	86.5	92.4	96.5	100.5	103.4	105.7	108.1	105.5	113.0	115.9	109.9
C25	149.6	134.0	184.0	151.2	155.8	181.7	148.7	168.4	190.3	124.8	169.2	177.4	209.1
C26	146.2	151.9	152.8	156.9	157.7	159.4	175.8	171.7	158.7	196.2	179.3	203.1	189.9
C27	142.2	145.0	151.5	148.6	146.6	148.0	146.4	148.1	144.6	142.9	145.0	149.0	142.8
C28	133.9	137.9	145.2	148.6	142.8	139.1	145.5	156.2	158.0	146.9	157.9	159.7	158.9
C29	169.3	177.4	173.3	169.2	174.4	169.4	174.6	176.5	179.5	181.4	180.9	185.9	176.8
C30	101.3	85.9	82.3	84.7	99.9	87.3	80.9	81.3	83.1	98.8	86.3	83.9	80.0
C31	132.3	131.0	125.0	132.5	126.9	131.8	133.6	138.6	130.4	122.3	130.6	136.9	136.5
C32	186.1	209.0	206.8	191.2	214.8	222.1	211.6	230.6	237.7	268.8	245.6	232.2	242.3
C33	83.5	88.9	82.7	89.6	80.8	95.1	85.6	84.3	89.0	78.5	86.1	85.4	87.5
D	103.3	106.2	106.7	103.1	104.3	102.6	102.1	100.7	102.5	111.4	102.8	96.9	100.4
D35	103.3	106.2	106.7	103.1	104.3	102.6	102.1	100.7	102.5	111.4	102.8	96.9	100.4

¹ ".." - Confidential data.



Table 4

Industrial Production Indices¹
(Working day adjusted, 2010 = 100)

NACE.BG - 2008	2014	2015	2016									2017			
	IV	IV	IV	V	VI	VII	VIII	IX	X	XI	XII	I	II	III	IV
B_TO_E36	106.2	108.0	107.5	104.4	115.9	116.6	109.2	114.1	117.7	122.4	122.5	106.8	111.1	119.9	112.7
B	93.4	92.5	93.9	90.5	92.7	98.8	95.7	104.6	111.7	117.1	114.4	99.2	105.2	98.8	92.0
B05	95.5	105.4	75.8	82.1	70.4	91.2	90.1	100.8	131.1	135.9	127.0	116.6	123.3	97.9	89.8
B06
B07	89.4	84.3	102.1	92.6	101.9	101.2	94.6	105.5	99.3	108.7	105.2	96.8	100.7	101.4	94.6
B08	114.0	109.9	106.3	110.5	113.5	121.3	122.6	109.5	112.6	112.2	97.1	52.1	79.5	83.7	92.6
B09
C	113.2	113.7	114.7	112.5	127.5	126.7	115.6	123.3	126.4	129.0	122.9	100.1	112.8	129.2	124.4
C10	90.1	88.9	86.4	90.2	93.9	93.8	98.9	97.5	101.4	99.0	94.0	74.0	81.2	90.8	84.9
C11	104.6	103.3	111.7	103.1	126.6	137.6	135.5	112.4	93.4	94.9	106.6	54.9	71.8	96.8	101.5
C12	118.3	104.3	57.0	54.5	69.1	97.9	72.3	65.6	75.2	79.3	89.8	60.6	63.3	85.5	76.9
C13	124.0	115.0	122.5	135.9	122.9	111.8	84.0	105.1	113.0	113.6	87.7	82.8	112.4	121.3	122.7
C14	94.9	85.9	90.8	89.1	107.7	117.8	91.0	98.9	99.6	87.3	95.1	98.0	95.1	96.8	85.3
C15	64.4	70.5	68.6	59.5	73.7	89.3	63.7	83.3	74.7	77.4	64.2	73.2	68.2	77.5	65.2
C16	96.7	101.5	88.8	90.2	98.3	96.3	90.3	87.9	97.7	93.9	79.6	67.7	83.5	87.8	90.5
C17	123.8	117.0	129.8	130.7	139.1	134.4	131.0	129.9	129.8	138.7	121.7	122.9	125.4	135.4	124.2
C18	106.5	107.6	109.6	107.5	118.1	116.9	109.3	116.0	129.0	140.0	126.5	103.5	109.9	127.4	110.9
C19
C20	114.6	111.3	108.1	110.5	109.7	124.3	117.0	119.1	125.1	121.5	108.9	105.5	117.9	131.5	131.9
C21	150.2	161.4	146.3	134.9	153.0	132.2	118.0	137.0	158.1	155.8	144.7	142.6	148.8	164.9	135.0
C22	130.2	134.7	144.7	140.3	157.4	154.3	143.1	148.1	161.5	159.6	127.3	131.0	143.1	166.9	159.0
C23	125.7	126.6	129.9	128.1	134.7	130.5	130.8	129.4	136.4	132.5	109.2	77.1	104.4	129.9	133.0
C24	107.7	121.8	100.8	79.9	79.8	114.6	89.6	91.5	115.8	112.8	90.9	102.3	107.4	125.9	109.5
C25	116.6	109.5	144.8	126.4	198.8	155.7	150.9	189.3	152.3	185.1	221.2	97.2	149.6	176.5	207.2
C26	127.2	147.0	143.3	152.5	160.2	160.9	137.2	158.0	183.9	182.8	171.4	181.5	165.0	214.5	187.2
C27	127.3	142.7	140.6	139.4	158.0	158.6	130.0	148.6	160.5	162.0	129.0	130.0	141.3	160.4	138.5
C28	154.0	147.3	134.5	134.6	157.8	158.1	128.4	138.5	149.4	167.9	152.2	128.9	153.3	171.7	160.0
C29	135.3	159.5	172.7	177.4	181.6	168.5	146.1	169.7	187.8	189.3	161.3	177.7	180.2	201.3	176.9
C30	113.2	87.3	110.2	100.9	85.9	84.2	85.5	78.2	75.3	73.6	85.0	81.1	78.2	94.4	84.3
C31	118.4	128.9	128.9	126.7	126.5	137.0	127.3	139.1	148.9	155.3	131.9	102.9	115.4	135.3	134.0
C32	159.7	159.5	179.1	209.3	234.6	192.5	220.0	233.1	242.5	242.4	205.0	237.5	211.0	235.4	232.4
C33	70.7	74.7	74.1	82.5	83.6	89.9	79.6	100.0	92.2	99.4	121.0	55.5	72.1	82.9	78.0
D	93.7	100.6	93.9	87.5	92.6	94.8	95.1	90.4	96.1	108.6	128.9	134.8	112.9	105.0	90.0
D35	93.7	100.6	93.9	87.5	92.6	94.8	95.1	90.4	96.1	108.6	128.9	134.8	112.9	105.0	90.0