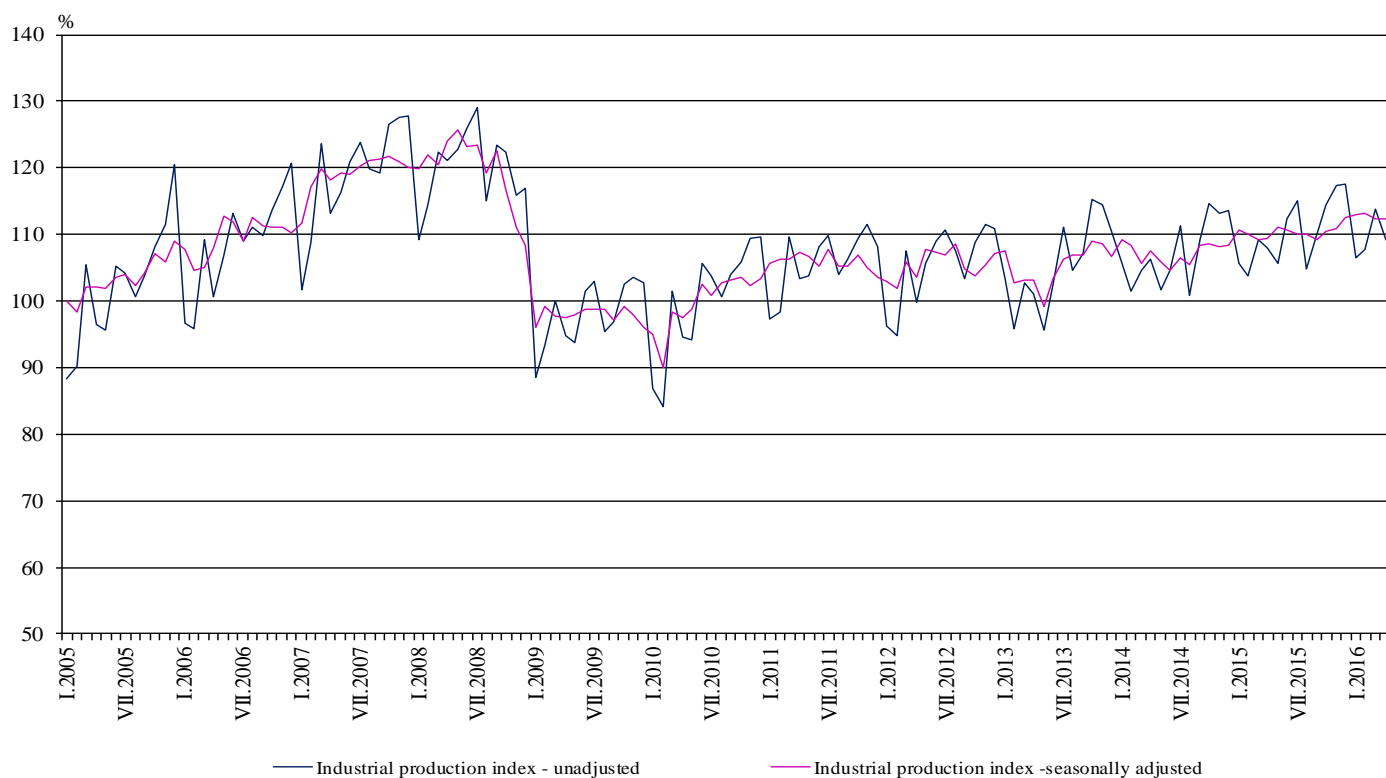


INDUSTRIAL PRODUCTION INDICES IN APRIL 2016¹

According to the preliminary data the Industrial Production Index², seasonally adjusted³, decreased by 0.1% in April 2016 as compared to March 2016.

In April 2016 working day adjusted⁴ Industrial Production Index rose by 2.5% in comparison with the same month of 2015.

Figure 1. Industrial Production Indices (2010 = 100)



¹ April 2016 data are preliminary.

² Monthly Industrial Production and Industrial turnover indices measure changes in production and turnover values of industrial enterprises. This information can be used to access the current economic development and for short-term forecasts. Indices do not measure the actual production level, it aims to measure the average change in value of production between two points of time. Indices are compiled on the base of information collected through representative sampling survey on industrial enterprises. The sample covers enterprises with annual turnover more than 97% of total turnover in industry.

Industrial production indices are calculated at constant base year that is to say they are weighted with the structure of the value added at factor costs in the base year.

³ Seasonal adjustment is a statistical method, which eliminates the seasonal component of time series.

⁴ Working day adjustment is an adjustment for variations caused by calendar effects, different number of calendar and working days in the months, national holidays and outliers (for example the presence of more non-working days in May could contribute to the decline in the production in some activities).



Monthly comparisons

In April 2016 as compared to March 2016, the seasonally adjusted Industrial Production Index decreased in the mining and quarrying industry and in the manufacturing by 0.2%, while in the electricity, gas, steam and air conditioning supply an increase by 0.6% was seen.

The most significant decreases of production in the manufacturing were registered in the manufacture of tobacco products by 18.5%, in the manufacture of electrical equipment by 7.2%, in the manufacture of wood and of products of wood and cork, except furniture; manufacture of articles of straw and plaiting materials by 4.6%, in the printing and reproduction of recorded media by 3.7%. There were increases in the repair and installation of machinery and equipment by 11.2%, in the manufacture of beverages by 7.2%, in the manufacture of chemicals and chemical products by 6.3%, in the manufacture of textiles by 3.6%.

**Figure 2. Changes of Industrial Production Indices compared to the previous month
(Seasonally adjusted)**



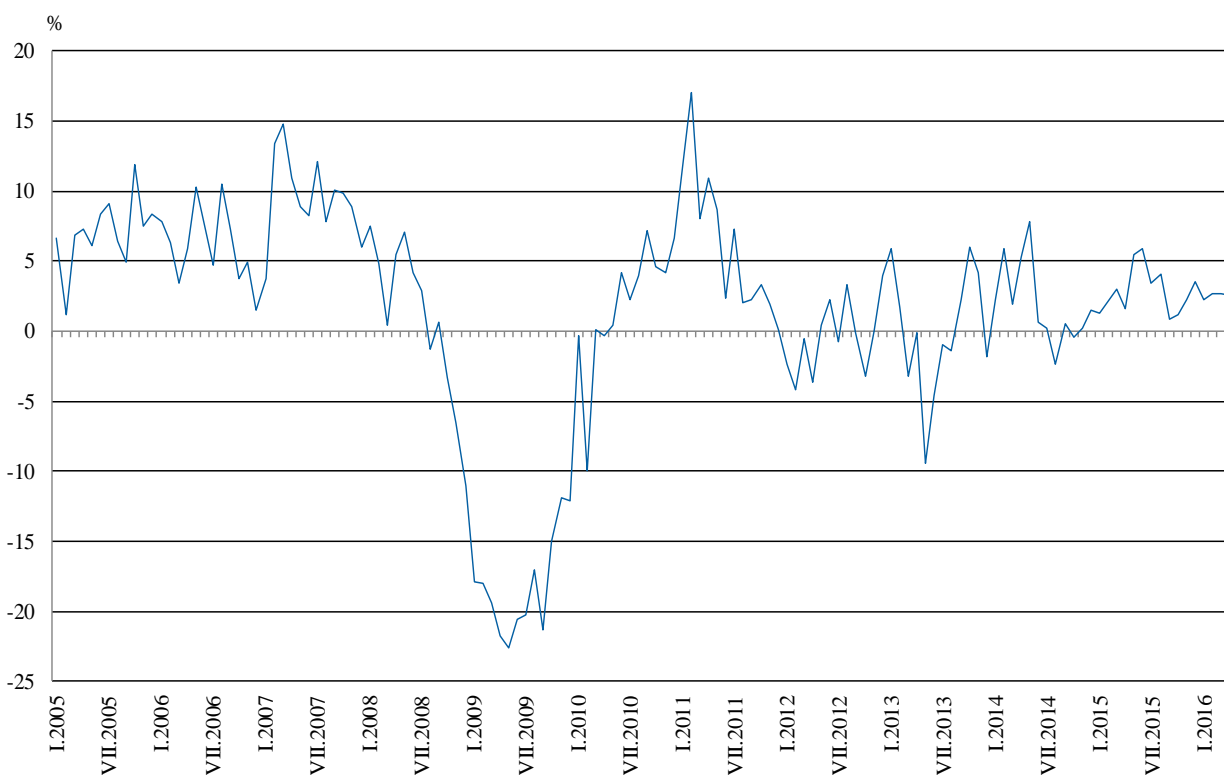


Annual comparisons

On annual basis in April 2016 Industrial Production Index calculated from working day adjusted data increased in the manufacturing by 4.9% and in the mining and quarrying industry by 2.5%, while in the electricity, gas, steam and air conditioning supply a decrease by 6.8% was registered.

In the manufacturing, the more significant increases compared to the same month of the previous year were seen in the manufacture of fabricated metal products, except machinery and equipment by 40.8%, in the manufacture of other transport equipment by 29.3%, in the manufacture of textiles by 15.9%, in the manufacture of paper and paper products by 12.5%. Decreases were registered in the manufacture of tobacco products by 39.0%, in the manufacture of basic metals by 18.0%, in the manufacture of wood and of products of wood and cork, except furniture; manufacture of articles of straw and plaiting materials by 7.5%, in the manufacture of basic pharmaceutical products and pharmaceutical preparations by 4.5%.

Figure 3. Changes of Industrial Production Indices compared to the same month of the previous year (Working day adjusted)



The final data on Industrial Production and Turnover Indices for March 2016 can be found on the NSI website: <http://www.nsi.bg/en>.

Annex

Table 1
Changes of Industrial Production Indices compared to the previous month^{1,2}
(Per cent)

Economic Activities	NACE.BG - 2008	2015		2016			
		XI	XII	I	II	III	IV
Industry	B_TO_E36	0.5	1.5	0.4	0.2	-0.7	-0.1
Mining and quarrying	B	3.1	0.2	1.9	-1.2	-0.2	-0.2
Mining of coal and lignite	B05	11.0	10.6	-3.7	-10.2	-15.0	10.0
Extraction of crude petroleum and natural gas	B06
Mining of metal ores	B07	10.2	-10.5	7.5	-4.6	16.5	-0.3
Other mining and quarrying	B08	-8.7	19.0	-23.3	22.9	-6.5	-3.7
Mining support service activities	B09
Manufacturing	C	0.7	1.4	-0.6	1.3	-1.0	-0.2
Manufacture of food products	C10	-1.3	-0.7	5.0	-3.1	-1.3	2.2
Manufacture of beverages	C11	0.8	-2.7	7.2	2.0	-3.7	7.2
Manufacture of tobacco products	C12	8.8	6.4	3.3	-4.3	-17.0	-18.5
Manufacture of textiles	C13	-5.1	-1.6	2.4	6.5	-3.7	3.6
Manufacture of wearing apparel	C14	-5.3	3.3	-0.6	-1.8	1.7	-0.6
Manufacture of leather and related products	C15	-3.8	4.2	0.1	0.8	1.4	2.6
Manufacture of wood and of products of wood and cork, except furniture; manufacture of articles of straw and plaiting materials	C16	7.0	0.1	-6.8	7.7	-4.1	-4.6
Manufacture of paper and paper products	C17	-0.9	-8.8	-4.4	8.2	1.0	0.3
Printing and reproduction of recorded media	C18	14.9	-12.2	11.8	-0.1	-5.6	-3.7
Manufacture of coke and refined petroleum products	C19
Manufacture of chemicals and chemical products	C20	-12.2	-2.5	6.3	8.7	-10.7	6.3
Manufacture of basic pharmaceutical products and pharmaceutical preparations	C21	1.3	0.7	-0.1	4.8	-3.2	-4.1
Manufacture of rubber and plastic products	C22	-1.8	2.1	5.6	2.5	-0.9	2.0
Manufacture of other non-metallic mineral products	C23	3.3	4.0	-5.3	-1.0	-0.6	-1.5
Manufacture of basic metals	C24	0.2	0.6	-2.7	-2.7	-0.4	0.3
Manufacture of fabricated metal products, except machinery and equipment	C25	9.8	-0.7	18.3	-12.7	1.8	2.5
Manufacture of computer, electronic and optical products	C26	-5.6	-6.2	14.3	-9.8	2.0	2.9
Manufacture of electrical equipment	C27	0.3	-3.1	3.2	5.1	0.3	-7.2
Manufacture of machinery and equipment n.e.c.	C28	-3.0	2.0	2.4	-0.4	0.8	-3.3
Manufacture of motor vehicles, trailers and semi-trailers	C29	-2.1	0.3	0.7	11.6	-0.6	-3.6
Manufacture of other transport equipment	C30	0.3	-5.3	-5.3	12.8	-2.0	2.9
Manufacture of furniture	C31	2.3	-1.6	4.1	-1.2	2.9	3.4
Other manufacturing	C32	2.8	10.5	7.7	-9.8	6.9	-8.7
Repair and installation of machinery and equipment	C33	4.5	-15.0	8.8	-13.7	-2.0	11.2
Electricity, gas, steam and air conditioning supply	D	-1.5	2.6	3.3	-3.0	-0.2	0.6
Electricity, gas, steam and air conditioning supply	D35	-1.5	2.6	3.3	-3.0	-0.2	0.6

¹ Seasonally adjusted.

² ".." - Confidential data.

Table 2

Changes of Industrial Production Indices compared to the same month of the previous year^{1,2}
(Per cent)

Economic Activities	NACE.BG - 2008	2015		2016			
		XI	XII	I	II	III	IV
Industry	B_TO_E36	2.2	3.5	2.2	2.7	2.6	2.5
Mining and quarrying	B	1.7	-0.9	5.9	2.2	6.9	2.5
Mining of coal and lignite	B05	0.9	11.2	-3.2	-13.5	-24.5	-25.8
Extraction of crude petroleum and natural gas	B06
Mining of metal ores	B07	-2.9	-15.4	11.4	4.7	20.5	23.0
Other mining and quarrying	B08	-6.1	16.4	-11.9	14.8	5.6	-1.2
Mining support service activities	B09
Manufacturing	C	5.7	7.2	4.5	6.3	5.2	4.9
Manufacture of food products	C10	-3.0	-1.5	-0.1	-4.9	2.7	0.6
Manufacture of beverages	C11	9.7	0.2	6.0	5.1	5.4	11.5
Manufacture of tobacco products	C12	-6.7	-8.1	9.4	-1.4	-22.0	-39.0
Manufacture of textiles	C13	4.6	-3.2	-0.8	18.9	14.7	15.9
Manufacture of wearing apparel	C14	4.6	10.1	7.6	6.1	12.0	8.2
Manufacture of leather and related products	C15	-21.9	-13.9	-8.5	-5.3	0.0	-3.8
Manufacture of wood and of products of wood and cork, except furniture; manufacture of articles of straw and plaiting materials	C16	11.0	13.9	-5.3	-1.8	-5.0	-7.5
Manufacture of paper and paper products	C17	16.2	8.0	-3.0	9.4	2.7	12.5
Printing and reproduction of recorded media	C18	23.9	9.7	18.5	15.5	8.3	7.5
Manufacture of coke and refined petroleum products	C19
Manufacture of chemicals and chemical products	C20	-7.9	-8.7	-7.1	11.2	1.4	1.6
Manufacture of basic pharmaceutical products and pharmaceutical preparations	C21	9.5	0.9	0.6	19.6	1.2	-4.5
Manufacture of rubber and plastic products	C22	6.2	12.0	6.8	11.5	14.2	12.4
Manufacture of other non-metallic mineral products	C23	14.5	23.6	8.1	11.3	6.0	4.1
Manufacture of basic metals	C24	-0.5	-10.7	-16.8	-16.1	-8.8	-18.0
Manufacture of fabricated metal products, except machinery and equipment	C25	23.9	23.3	44.5	17.7	34.3	40.8
Manufacture of computer, electronic and optical products	C26	9.7	4.4	19.6	-6.6	0.2	0.8
Manufacture of electrical equipment	C27	13.5	10.9	5.1	12.2	10.3	0.3
Manufacture of machinery and equipment n.e.c.	C28	-13.8	2.2	-6.3	-4.0	2.7	-4.3
Manufacture of motor vehicles, trailers and semi-trailers	C29	8.7	3.5	2.9	13.8	14.5	9.7
Manufacture of other transport equipment	C30	29.6	21.4	-22.8	20.6	12.1	29.3
Manufacture of furniture	C31	4.2	9.4	6.2	1.4	13.7	7.5
Other manufacturing	C32	27.2	43.8	29.8	31.8	37.2	19.9
Repair and installation of machinery and equipment	C33	-5.5	5.8	-5.4	-14.0	-23.2	1.0
Electricity, gas, steam and air conditioning supply	D	-7.2	-4.0	-5.2	-4.4	-5.6	-6.8
Electricity, gas, steam and air conditioning supply	D35	-7.2	-4.0	-5.2	-4.4	-5.6	-6.8

¹ Working day adjusted.

² ".." - Confidential data.

Table 3

Industrial Production Indices¹
(Seasonally adjusted, 2010 = 100)

NACE.BG - 2008	2015									2016			
	IV	V	VI	VII	VIII	IX	X	XI	XII	I	II	III	IV
B_TO_E36	109.5	111.0	110.6	110.1	110.1	109.2	110.4	110.9	112.5	113.0	113.2	112.4	112.3
B	98.2	99.1	99.8	99.1	98.6	100.3	97.1	100.1	100.3	102.2	101.0	100.8	100.7
B05	119.7	107.9	106.8	115.5	123.0	124.4	95.1	105.6	116.8	112.6	101.1	86.0	94.6
B06
B07	84.3	94.7	99.8	88.3	79.8	88.2	88.4	97.4	87.1	93.6	89.3	104.0	103.6
B08	110.4	112.1	119.9	119.1	109.9	111.7	119.1	108.8	129.4	99.2	122.0	114.0	109.7
B09
C	111.7	114.8	114.5	114.3	113.8	113.6	116.2	117.0	118.6	117.9	119.4	118.2	118.0
C10	90.9	92.1	89.4	86.1	87.7	88.1	90.8	89.6	89.0	93.5	90.5	89.4	91.4
C11	100.9	101.2	100.3	100.5	101.0	98.3	99.6	100.4	97.7	104.7	106.8	102.8	110.2
C12	103.3	96.4	93.3	89.2	89.2	82.1	92.7	100.9	107.4	110.9	106.2	88.2	71.9
C13	102.8	110.1	108.5	110.5	106.9	108.8	116.4	110.5	108.7	111.3	118.6	114.2	118.4
C14	91.3	93.4	98.2	96.7	92.4	96.6	103.0	97.5	100.7	100.1	98.4	100.0	99.4
C15	81.7	71.6	74.2	80.4	77.8	78.4	73.5	70.7	73.7	73.7	74.4	75.4	77.4
C16	102.0	96.6	97.6	91.8	96.7	96.7	96.6	103.4	103.6	96.5	104.0	99.7	95.1
C17	114.6	122.3	126.0	118.2	119.3	132.5	136.2	135.0	123.1	117.6	127.3	128.6	128.9
C18	108.7	110.7	116.3	112.5	111.9	111.5	115.6	132.7	116.5	130.3	130.2	122.9	118.3
C19
C20	106.1	102.3	112.9	123.5	124.2	111.9	114.9	100.8	98.3	104.5	113.5	101.3	107.7
C21	151.6	147.7	143.1	147.1	143.0	145.6	148.5	150.5	151.5	151.4	158.6	153.5	147.2
C22	132.6	136.3	132.8	131.2	127.6	131.1	134.9	132.5	135.2	142.9	146.5	145.2	148.1
C23	121.9	129.5	128.8	129.3	127.6	128.4	128.5	132.8	138.2	130.9	129.6	128.8	127.0
C24	103.0	100.4	99.2	97.2	95.3	91.1	92.3	92.5	93.1	90.5	88.0	87.6	87.9
C25	113.0	128.6	120.4	127.8	128.8	129.1	135.4	148.7	147.6	174.7	152.5	155.2	159.0
C26	146.8	148.7	151.8	150.3	148.8	139.1	154.6	145.9	136.8	156.3	141.0	143.9	148.0
C27	140.5	151.3	135.8	146.4	147.4	143.0	147.4	147.8	143.3	147.9	155.5	155.9	144.7
C28	142.2	146.3	145.0	142.4	141.5	139.0	139.8	135.6	138.2	141.5	140.9	142.0	137.3
C29	154.3	149.9	156.8	160.5	145.4	162.7	160.8	157.4	157.8	158.9	177.4	176.3	169.9
C30	83.8	95.4	82.6	85.0	101.1	106.7	104.0	104.3	98.8	93.6	105.6	103.5	106.4
C31	130.9	126.2	121.2	126.1	119.3	133.0	126.1	129.0	126.9	132.1	130.5	134.3	138.9
C32	161.8	168.6	174.3	183.4	180.1	172.6	181.6	186.8	206.5	222.3	200.4	214.3	195.6
C33	83.7	93.8	91.8	93.3	86.3	79.9	93.1	97.3	82.7	90.0	77.6	76.0	84.5
D	109.9	107.2	105.8	104.2	105.7	101.8	101.0	99.5	102.0	105.3	102.1	101.9	102.5
D35	109.9	107.2	105.8	104.2	105.7	101.8	101.0	99.5	102.0	105.3	102.1	101.9	102.5

¹ ".." - Confidential data.

Table 4

Industrial Production Indices¹
(Working day adjusted, 2010 = 100)

NACE.BG - 2008	2013	2014	2015									2016			
	IV	IV	IV	V	VI	VII	VIII	IX	X	XI	XII	I	II	III	IV
B_TO_E36	100.2	105.4	107.1	107.4	111.5	113.7	106.5	109.2	114.6	118.0	116.1	108.2	106.5	112.4	109.9
B	83.3	93.4	92.5	94.0	97.0	98.0	94.9	105.2	101.3	108.2	109.8	103.5	95.6	95.4	94.8
B05	57.3	94.4	104.3	90.3	83.4	106.6	121.9	132.9	117.6	118.0	136.8	128.0	98.7	71.1	77.4
B06
B07	91.9	89.4	84.3	94.7	99.8	88.3	79.8	88.2	88.4	97.4	87.1	93.6	89.3	104.0	103.6
B08	112.6	114.0	109.9	118.0	132.1	135.8	121.4	123.9	142.1	121.2	135.1	59.9	86.7	101.9	108.6
B09
C	107.7	112.1	112.6	116.0	120.9	122.6	110.9	116.3	123.6	123.8	114.7	103.1	107.8	117.0	118.1
C10	87.6	89.1	87.8	89.4	91.4	87.1	90.0	95.0	100.3	96.5	92.9	78.9	78.9	87.7	88.4
C11	97.2	103.6	102.3	114.2	123.4	124.3	127.6	105.9	86.0	89.1	100.3	66.6	74.4	95.6	114.0
C12	142.7	118.3	104.3	104.7	106.1	107.0	89.0	88.9	90.9	97.3	109.3	85.0	84.2	89.4	63.6
C13	111.6	121.6	112.7	124.1	120.6	117.2	86.0	105.3	119.7	113.8	94.4	95.2	113.9	126.1	130.7
C14	96.6	96.0	85.5	86.4	105.2	110.2	92.6	92.8	103.8	98.2	100.5	104.8	95.5	93.5	92.5
C15	72.1	64.4	70.5	59.3	76.2	98.4	79.9	86.5	76.8	71.5	68.4	74.9	71.9	73.3	67.8
C16	103.9	95.3	100.0	96.4	106.0	101.5	98.6	103.9	107.8	112.5	99.0	75.1	87.4	97.1	92.5
C17	126.1	123.1	116.3	124.3	131.5	123.7	118.6	134.6	137.9	134.6	118.0	109.4	120.0	132.3	130.9
C18	111.8	104.8	105.8	108.5	119.7	111.3	107.2	113.5	123.1	149.2	129.6	112.9	118.7	120.1	113.8
C19
C20	101.8	113.2	109.9	102.4	117.6	124.8	117.8	112.3	113.8	104.0	96.3	97.0	106.3	110.8	111.6
C21	136.2	148.1	159.3	146.9	148.8	139.7	127.1	145.7	160.1	155.1	155.2	136.5	160.6	160.3	152.2
C22	113.1	128.1	132.4	138.6	144.6	144.9	128.0	139.9	150.4	138.1	115.5	120.8	128.5	144.3	148.8
C23	119.8	124.7	125.6	143.5	140.5	141.1	135.2	140.5	141.7	143.0	123.3	89.7	103.3	126.0	130.8
C24	104.3	107.7	121.8	105.0	92.6	118.6	92.1	76.7	103.4	98.2	70.9	93.9	84.2	82.0	99.9
C25	99.3	115.4	108.4	124.7	125.2	133.6	125.0	132.9	144.1	165.6	165.9	135.8	133.8	152.3	152.6
C26	130.6	125.0	144.5	150.5	159.6	154.1	129.9	139.8	158.6	153.7	150.0	139.7	129.6	148.5	145.7
C27	122.3	130.2	142.3	148.6	141.7	155.5	129.9	144.5	162.7	162.6	130.2	135.7	149.3	163.3	142.7
C28	137.5	151.6	145.1	145.6	156.8	149.7	127.8	141.7	143.8	143.4	129.3	125.4	135.4	151.4	138.9
C29	105.8	135.3	159.5	149.2	166.8	162.2	119.6	167.0	174.6	173.3	139.8	153.7	173.5	187.4	175.0
C30	78.5	113.2	87.3	115.6	90.4	88.0	81.4	97.2	101.1	96.9	103.7	72.0	96.2	113.7	112.9
C31	117.2	116.1	126.3	123.6	124.8	129.9	121.3	141.2	139.5	141.6	127.3	112.9	115.5	129.9	135.7
C32	139.7	158.2	157.9	169.3	197.8	188.1	184.0	182.4	210.9	195.7	178.3	188.4	171.2	217.5	189.4
C33	74.7	70.7	74.7	86.3	92.6	92.4	85.3	81.6	99.4	114.3	111.3	64.8	65.4	74.1	75.4
D	86.8	93.7	100.6	88.2	91.1	95.5	96.3	90.0	95.5	108.2	128.7	127.5	112.5	110.4	93.8
D35	86.8	93.7	100.6	88.2	91.1	95.5	96.3	90.0	95.5	108.2	128.7	127.5	112.5	110.4	93.8