

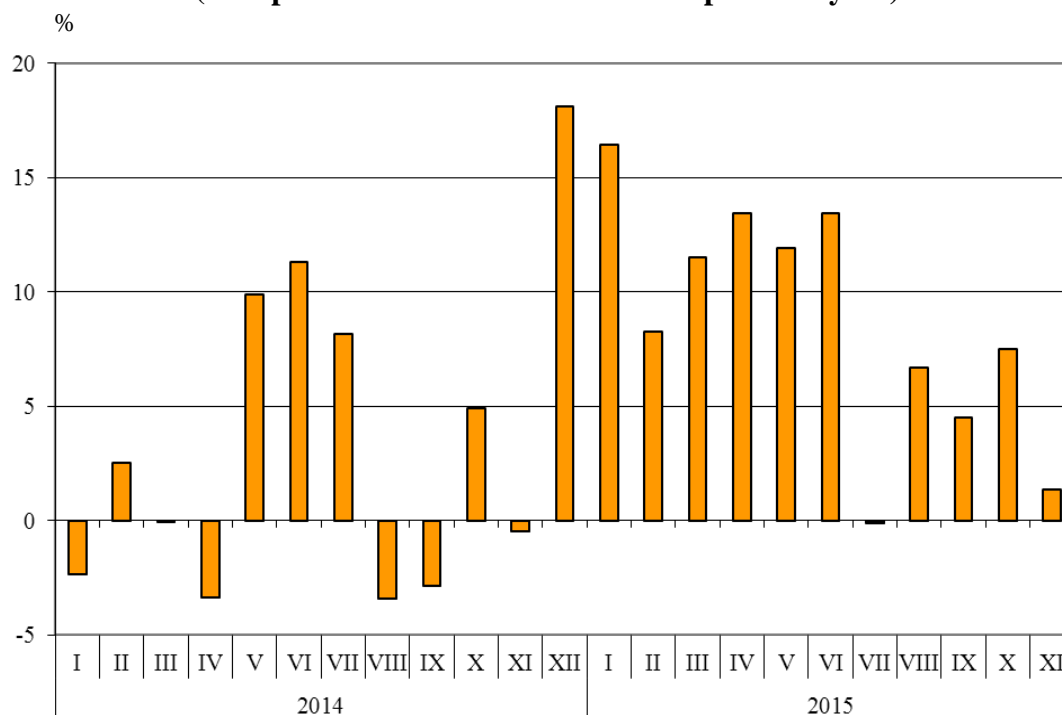


BULGARIAN TRADE WITH EU IN THE PERIOD JANUARY - NOVEMBER 2015 (PRELIMINARY DATA)

In the period **January - November 2015** Bulgarian **exports to the EU** increased by 8.3% compared to the corresponding period of 2014 and amounted to 26.9 Billion BGN (Annex, Table 1 and 2). Main trade partners of Bulgaria were Germany, Italy, Romania, Greece, France and Belgium which accounted for 69.3% of the exports to the EU Member States (Annex, Table 3).

In November 2015 the exports to the EU increased by 1.3% compared to the corresponding month of the previous year and amounted to 2.474 Billion BGN.

**Figure 1. Nominal value¹ change of exports of Bulgaria to EU in the period 2014 - 2015
(Compared to the same month of the previous year)**



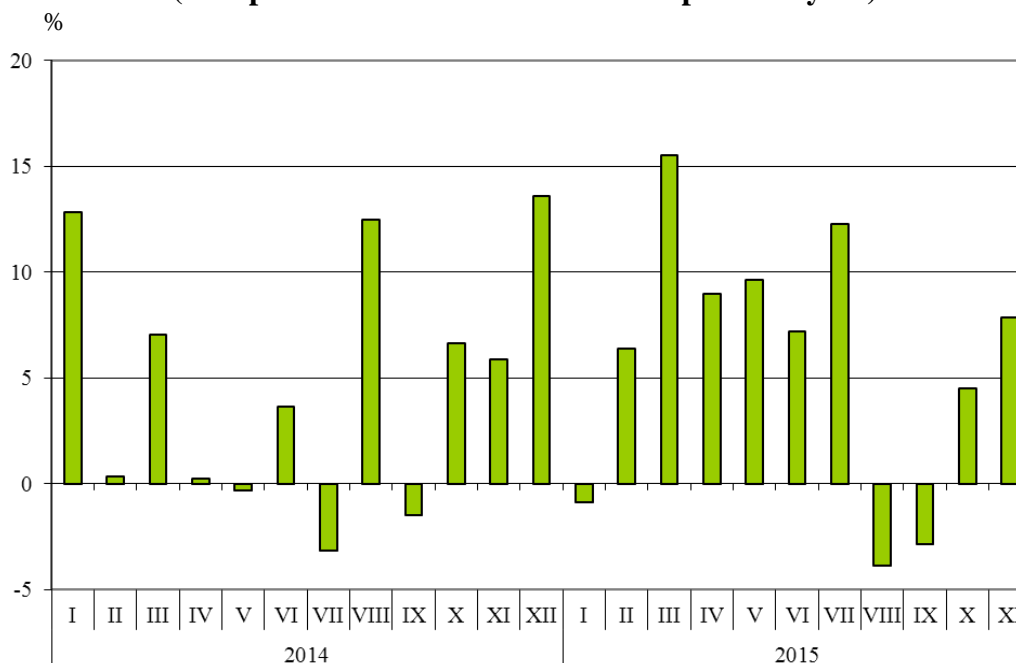
Bulgarian **imports from the EU** in the period January - November 2015 increased by 5.9% compared to the same period of 2014 and added up to 30.4 Billion BGN at CIF prices (Annex, Tables 1 and 2). The largest amounts were reported for the goods imported from Germany, Italy, Romania, Greece and Spain (Annex, Table 3).

In **November** 2015 the Bulgarian imports from the EU Member States increased by 7.8% compared to the corresponding month of the previous year and amounted to 3.048 Billion BGN at CIF prices.

¹ Value changes at current prices.



**Figure 2. Nominal value¹ change of imports of Bulgaria from EU in the period 2014 - 2015
(Compared to the same month of the previous year)**



The **foreign trade balance** of Bulgaria (export FOB - import CIF) **with the EU** in the period January - November 2015 was negative and added up to 3 467.0 Million BGN (Annex, Table 1). At FOB/FOB prices (after elimination of transport and insurance costs on imports) the trade balance was also negative and amounted to 1 432.1 Million BGN.

In the eleven months of 2015 compared to the same period of 2014 the largest growth **in the exports** of Bulgaria to the **EU** distributed according to the Standard International Trade Classification (Annex, Table 4) was recorded in the sections ‘Chemical and related products n.e.c.’ (22.1%) and ‘Mineral fuel, lubricants and related materials’ (16.9%). Fall was recorded in section ‘Crude materials, inedible (except fuel)’² (1.6%).

In **imports from the EU** the largest growth was reported in the section ‘Beverages and tobacco’ (23.3%) while the most notable fall was observed in section ‘Mineral fuel, lubricants and related materials’ (23.9%).

¹ Value changes at current prices.

²The section includes following divisions: raw hides, skins and furskins; oil-seeds and oleaginous fruits; crude rubber; cork and wood; pulp and waste paper; textile fibres and their wastes; crude fertilizers and crude minerals; metalliferous ores and metal scrap; crude animal and vegetable materials, n.e.s.

Exports, imports and trade balance of Bulgaria in in the period January - November 2014 and 2015¹ by months

(Million BGN)

Months/Periods	Exports - FOB			Imports - CIF			Imports - FOB ²			Trade balance - FOB/CIF			Trade balance - FOB/FOB ²		
	Total	EU	Non-EU	Total	EU	Non-EU	Total	EU	Non-EU	Total	EU	Non-EU	Total	EU	Non-EU
I.2014	3099.1	1970.5	1128.6	3955.8	2333.1	1622.7	3677.7	2172.5	1505.2	-856.7	-362.6	-494.1	-578.6	-202.0	-376.6
II.2014	3226.8	2001.1	1225.7	3795.4	2466.6	1328.8	3535.1	2306.6	1228.5	-568.6	-465.5	-103.1	-308.3	-305.5	-2.8
III.2014	3193.6	2171.8	1021.8	3935.8	2497.8	1438.0	3687.1	2341.3	1345.8	-742.2	-326.0	-416.2	-493.5	-169.5	-324.0
I - III.2014	9519.5	6143.4	3376.1	11687.0	7297.5	4389.5	10899.9	6820.4	4079.5	-2167.5	-1154.1	-1013.4	-1380.4	-677.0	-703.4
IV.2014	3468.6	2117.6	1351.0	4303.1	2630.3	1672.8	4017.5	2455.1	1562.4	-834.5	-512.7	-321.8	-548.9	-337.5	-211.4
V.2014	3499.0	2065.0	1434.0	4132.0	2366.2	1765.8	3856.8	2213.1	1643.7	-633.0	-301.2	-331.8	-357.8	-148.1	-209.7
VI.2014	3704.8	2271.5	1433.3	4168.0	2641.9	1526.1	3881.1	2464.1	1417.0	-463.2	-370.4	-92.8	-176.3	-192.6	16.3
IV - VI.2014	10672.4	6454.1	4218.3	12603.1	7638.4	4964.7	11755.4	7132.3	4623.1	-1930.7	-1184.3	-746.4	-1083.0	-678.2	-404.8
I - VI.2014	20191.9	12597.5	7594.4	24290.1	14935.9	9354.2	22655.3	13952.7	8702.6	-4098.2	-2338.4	-1759.8	-2463.4	-1355.2	-1108.2
VII.2014	4016.0	2636.7	1379.3	4397.0	2760.6	1636.4	4100.4	2576.8	1523.6	-381.0	-123.9	-257.1	-84.4	59.9	-144.3
VIII.2014	3801.9	2302.9	1499.0	4309.1	2465.1	1844.0	4002.5	2291.9	1710.6	-507.2	-162.2	-345.0	-200.6	11.0	-211.6
IX.2014	3919.0	2378.5	1540.5	4671.3	2752.6	1918.7	4335.2	2564.5	1770.7	-752.3	-374.1	-378.2	-416.2	-186.0	-230.2
VII - IX.2014	11736.9	7318.1	4418.8	13377.4	7978.3	5399.1	12438.1	7433.2	5004.9	-1640.5	-660.2	-980.3	-701.2	-115.1	-586.1
I - IX.2014	31928.8	19915.6	12013.2	37667.5	22914.2	14753.3	35093.4	21385.9	13707.5	-5738.7	-2998.6	-2740.1	-3164.6	-1470.3	-1694.3
X.2014	4031.0	2509.1	1521.9	4666.1	2948.9	1717.2	4339.5	2746.5	1593.0	-635.1	-439.8	-195.3	-308.5	-237.4	-71.1
XI.2014	3849.1	2441.0	1408.1	4379.3	2826.2	1553.1	4082.5	2633.6	1448.9	-530.2	-385.2	-145.0	-233.4	-192.6	-40.8
I - XI.2014	39808.9	24865.7	14943.2	46712.9	28689.3	18023.6	43515.4	26766.0	16749.4	-6904.0	-3823.6	-3080.4	-3706.5	-1900.3	-1806.2

¹ Data are preliminary as of 8-th of February 2016.

² By data of BNB for the transport costs.

Table 1

Exports, imports and trade balance of Bulgaria in in the period January - November 2014 and 2015¹ by months

(Continued and end)

(Million BGN)

Months/Periods	Exports - FOB			Imports - CIF			Imports - FOB ²			Trade balance - FOB/CIF			Trade balance - FOB/FOB ²		
	Total	EU	Non-EU	Total	EU	Non-EU	Total	EU	Non-EU	Total	EU	Non-EU	Total	EU	Non-EU
I.2015	3390.3	2294.6	1095.7	3776.2	2312.2	1464.0	3499.0	2147.6	1351.4	-385.9	-17.6	-368.3	-108.7	147.0	-255.7
II.2015	3423.2	2166.6	1256.6	4110.8	2624.6	1486.2	3825.0	2447.5	1377.5	-687.6	-458.0	-229.6	-401.8	-280.9	-120.9
III.2015	3945.4	2421.5	1523.9	4436.4	2885.4	1551.0	4145.9	2697.0	1448.9	-491.0	-463.9	-27.1	-200.5	-275.5	75.0
I - III.2015	10758.9	6882.7	3876.2	12323.4	7822.2	4501.2	11469.9	7292.1	4177.8	-1564.5	-939.5	-625.0	-711.0	-409.4	-301.6
IV.2015	3902.8	2402.3	1500.5	4524.4	2866.3	1658.1	4204.8	2664.1	1540.7	-621.6	-464.0	-157.6	-302.0	-261.8	-40.2
V.2015	3735.4	2311.5	1423.9	4201.9	2594.5	1607.4	3923.7	2425.8	1497.9	-466.5	-283.0	-183.5	-188.3	-114.3	-74.0
VI.2015	4040.5	2577.2	1463.3	4436.8	2832.6	1604.2	4146.7	2649.6	1497.1	-396.3	-255.4	-140.9	-106.2	-72.4	-33.8
IV - VI.2015	11678.7	7291.0	4387.7	13163.1	8293.4	4869.7	12275.2	7739.5	4535.7	-1484.4	-1002.4	-482.0	-596.5	-448.5	-148.0
I - VI.2015	22437.6	14173.7	8263.9	25486.5	16115.6	9370.9	23745.1	15031.6	8713.5	-3048.9	-1941.9	-1107.0	-1307.5	-857.9	-449.6
VII.2015	4091.7	2633.7	1458.0	4758.0	3099.3	1658.7	4422.7	2882.0	1540.7	-666.3	-465.6	-200.7	-331.0	-248.3	-82.7
VIII.2015	3763.3	2456.8	1306.5	3817.9	2369.0	1448.9	3559.5	2215.3	1344.2	-54.6	87.8	-142.4	203.8	241.5	-37.7
IX.2015	3762.0	2485.0	1277.0	4099.3	2673.2	1426.1	3831.3	2500.2	1331.1	-337.3	-188.2	-149.1	-69.3	-15.2	-54.1
VII - IX.2015	11617.0	7575.5	4041.5	12675.2	8141.5	4533.7	11813.5	7597.5	4216.0	-1058.2	-566.0	-492.2	-196.5	-22.0	-174.5
I - IX.2015	34054.6	21749.2	12305.4	38161.7	24257.1	13904.6	35558.6	22629.1	12929.5	-4107.1	-2507.9	-1599.2	-1504.0	-879.9	-624.1
X.2015	4040.4	2697.5	1342.9	4634.2	3082.3	1551.9	4325.3	2873.9	1451.4	-593.8	-384.8	-209.0	-284.9	-176.4	-108.5
XI.2015	3821.0	2473.6	1347.4	4576.9	3047.9	1529.0	4257.0	2849.4	1407.6	-755.9	-574.3	-181.6	-436.0	-375.8	-60.2
I - XI.2015	41916.0	26920.3	14995.7	47372.8	30387.3	16985.5	44140.9	28352.4	15788.5	-5456.8	-3467.0	-1989.8	-2224.9	-1432.1	-792.8

¹ Data are preliminary as of 8-th of February 2016.

² By data of BNB for the transport costs.



Table 2

**Value changes of exports and imports of Bulgaria in the period January - November 2015¹
compared to the same period of the previous year**

(Per cent)

Months/Periods	Exports - FOB			Imports - CIF			Imports - FOB		
	Total	EU	Non-EU	Total	EU	Non-EU	Total	EU	Non-EU
I	9.4	16.4	-2.9	-4.5	-0.9	-9.8	-4.9	-1.1	-10.2
II	6.1	8.3	2.5	8.3	6.4	11.8	8.2	6.1	12.1
III	23.5	11.5	49.1	12.7	15.5	7.9	12.4	15.2	7.7
I - III	13.0	12.0	14.8	5.4	7.2	2.5	5.2	6.9	2.4
IV	12.5	13.4	11.1	5.1	9.0	-0.9	4.7	8.5	-1.4
V	6.8	11.9	-0.7	1.7	9.6	-9.0	1.7	9.6	-8.9
VI	9.1	13.5	2.1	6.4	7.2	5.1	6.8	7.5	5.7
IV - VI	9.4	13.0	4.0	4.4	8.6	-1.9	4.4	8.5	-1.9
I - VI	11.1	12.5	8.8	4.9	7.9	0.2	4.8	7.7	0.1
VII	1.9	-0.1	5.7	8.2	12.3	1.4	7.9	11.8	1.1
VIII	-1.0	6.7	-12.8	-11.4	-3.9	-21.4	-11.1	-3.3	-21.4
IX	-4.0	4.5	-17.1	-12.2	-2.9	-25.7	-11.6	-2.5	-24.8
VII - IX	-1.0	3.5	-8.5	-5.2	2.0	-16.0	-5.0	2.2	-15.8
I - IX	6.7	9.2	2.4	1.3	5.9	-5.8	1.3	5.8	-5.7
X	0.2	7.5	-11.8	-0.7	4.5	-9.6	-0.3	4.6	-8.9
XI	-0.7	1.3	-4.3	4.5	7.8	-1.6	4.3	8.2	-2.9
I - XI	5.3	8.3	0.4	1.4	5.9	-5.8	1.4	5.9	-5.7

¹ Data are preliminary as of 8-th of February 2016.

Table 3

Exports, imports and trade balance by groups of countries and main partner countries¹ of Bulgaria in the period January - November 2014 and 2015²

Countries and groups of countries	Exports - FOB			Imports - CIF			Trade balance - FOB/CIF	
	2014	2015	Change compared to the same period of the previous year - %	2014	2015	Change compared to the same period of the previous year - %	2014	2015
	Million BGN			Million BGN			Million BGN	
Total	39808.9	41916.0	5.3	46712.9	47372.8	1.4	-6904.0	-5456.8
EU	24865.7	26920.3	8.3	28689.3	30387.3	5.9	-3823.6	-3467.0
Austria	698.5	748.7	7.2	1339.5	1282.4	-4.3	-641.0	-533.7
Belgium	1598.3	1543.5	-3.4	971.7	1067.6	9.9	626.6	475.9
Croatia	168.8	172.1	2.0	82.2	103.7	26.2	86.6	68.4
Cyprus	174.1	285.1	63.8	50.6	73.1	44.5	123.5	212.0
Czech Republic	561.7	712.2	26.8	1057.9	1006.5	-4.9	-496.2	-294.3
Denmark	191.1	225.9	18.2	192.1	217.1	13.0	-1.0	8.8
Estonia	38.7	38.5	-0.5	34.3	19.8	-42.3	4.4	18.7
Finland	143.9	112.8	-21.6	86.0	107.4	24.9	57.9	5.4
France	1727.0	1781.5	3.2	1402.4	1486.9	6.0	324.6	294.6
Germany	4846.9	5290.5	9.2	5632.8	6107.2	8.4	-785.9	-816.7
Greece	2634.6	2699.9	2.5	2375.1	2248.4	-5.3	259.5	451.5
Hungary	542.3	645.8	19.1	1564.7	1749.6	11.8	-1022.4	-1103.8
Ireland	73.0	54.7	-25.1	139.0	145.5	4.7	-66.0	-90.8
Italy	3642.6	3909.5	7.3	3289.4	3564.2	8.4	353.2	345.3
Latvia	43.9	45.4	3.4	21.2	53.6	152.8	22.7	-8.2
Lithuania	84.6	88.3	4.4	76.5	77.8	1.7	8.1	10.5
Luxembourg	5.0	10.1	102.0	134.7	145.7	8.2	-129.7	-135.6
Malta	67.1	90.6	35.0	136.9	18.8	-86.3	-69.8	71.8
Netherlands	877.0	960.5	9.5	1280.3	1579.8	23.4	-403.3	-619.3
Poland	800.2	943.1	17.9	1285.6	1472.3	14.5	-485.4	-529.2
Portugal	174.4	154.4	-11.5	97.2	107.4	10.5	77.2	47.0
Romania	3188.8	3423.5	7.4	3213.8	3218.7	0.2	-25.0	204.8
Slovakia	289.3	312.4	8.0	556.0	678.8	22.1	-266.7	-366.4
Slovenia	218.9	317.2	44.9	311.7	313.2	0.5	-92.8	4.0
Spain	846.6	961.7	13.6	2227.1	2244.1	0.8	-1380.5	-1282.4
Sweden	257.7	275.8	7.0	274.9	294.1	7.0	-17.2	-18.3
United Kingdom	889.9	1058.0	18.9	803.7	856.5	6.6	86.2	201.5
Not specified	80.8	58.6	-27.5	52.0	147.1	182.9	28.8	-88.5

¹ Partner country:

- In case of exports (or dispatches) is the country (or Member State) of final destination of the goods.
- In case of imports (or arrivals) is the country (or Member State) of consignment of the goods.

² Data are preliminary as of 8-th of February 2016.



Table 3

Exports, imports and trade balance by groups of countries and main partner countries¹ of Bulgaria in the period January - November 2014 and 2015²

(Continued)

Countries and groups of countries	Exports - FOB			Imports - CIF			Trade balance - FOB/CIF	
	2014	2015	Change compared to the same period of the previous year - %	2014	2015	Change compared to the same period of the previous year - %	2014	2015
	Million BGN			Million BGN			Million BGN	
Non- EU countries	14943.2	14995.7	0.4	18023.6	16985.5	-5.8	-3080.4	-1989.8
CIS³	1725.8	1416.2	-17.9	8422.4	6671.5	-20.8	-6696.6	-5255.3
of which:								
Kazakhstan	60.8	41.7	-31.4	65.1	44.5	-31.6	-4.3	-2.8
Russian Federation	966.5	718.8	-25.6	7202.4	5642.2	-21.7	-6235.9	-4923.4
Ukraine	323.9	349.1	7.8	981.5	855.3	-12.9	-657.6	-506.2
OECD⁴	5093.6	5193.8	2.0	4031.9	4254.9	5.5	1061.7	938.9
of which:								
Canada	70.0	89.2	27.4	57.4	49.9	-13.1	12.6	39.3
Israel	174.5	167.5	-4.0	123.4	65.5	-46.9	51.1	102.0
Japan	50.7	74.0	46.0	154.6	146.1	-5.5	-103.9	-72.1
Korea, Republic of	134.8	102.1	-24.3	147.8	153.8	4.1	-13.0	-51.7
Turkey	3708.8	3627.0	-2.2	2612.3	2702.9	3.5	1096.5	924.1
United States	553.7	671.9	21.3	521.0	441.3	-15.3	32.7	230.6
EFTA⁵	292.3	306.6	4.9	343.2	374.9	9.2	-50.9	-68.3
of which:								
Norway	64.8	62.4	-3.7	30.7	29.2	-4.9	34.1	33.2
Switzerland	224.3	241.5	7.7	310.8	342.3	10.1	-86.5	-100.8

¹ Partner country:

- In case of exports (or dispatches) is the country (or Member State) of final destination of the goods.
- In case of imports (or arrivals) is the country (or Member State) of consignment of the goods.

² Data are preliminary as of 8-th of February 2016.

³ CIS includes: Azerbaijan; Armenia; Belarus; Kazakhstan; Kyrgyz, Republic; Moldova, Republic of; Russian Federation; Tajikistan; Turkmenistan; Uzbekistan and Ukraine.

⁴ OECD includes: Australia; Virgin Islands (US); United States; Iceland; Canada; Mexico; New Zealand; Norway; Korea, Republic of; Turkey; Switzerland; Japan; Israel and Chile.

⁵ EFTA includes: Norway; Switzerland; Iceland and Liechtenstein.



Table 3

Exports, imports and trade balance by groups of countries and main partner countries¹ of Bulgaria in the period January - November 2014 and 2015²

(Continued and end)

Countries and groups of countries	Exports - FOB			Imports - CIF			Trade balance - FOB/CIF	
	2014	2015	Change compared to the same period of the previous year - %	2014	2015	Change compared to the same period of the previous year - %	2014	2015
	Million BGN			Million BGN			Million BGN	
Countries not included in the upper groups								
Albania	106.5	112.9	6.0	32.8	35.3	7.6	73.7	77.6
Bosnia and Herzegovina	73.5	108.9	48.2	78.0	54.8	-29.7	-4.5	54.1
Brazil	26.8	45.7	70.5	95.1	55.1	-42.1	-68.3	-9.4
China	962.8	995.1	3.4	1550.5	1733.5	11.8	-587.7	-738.4
Egypt	339.9	637.9	87.7	240.3	178.4	-25.8	99.6	459.5
Former Yugoslav Republic of Macedonia	640.5	689.1	7.6	478.0	478.1	0.0	162.5	211.0
Georgia	337.5	294.0	-12.9	398.0	423.2	6.3	-60.5	-129.2
India	85.8	108.0	25.9	202.5	256.9	26.9	-116.7	-148.9
Indonesia	52.2	71.7	37.4	58.8	63.8	8.5	-6.6	7.9
Iran, Islamic Republic of	152.3	232.2	52.5	44.8	12.0	-73.2	107.5	220.2
Peru	6.6	5.6	-15.2	41.4	40.7	-1.7	-34.8	-35.1
Serbia	649.7	752.5	15.8	547.6	643.3	17.5	102.1	109.2
Singapore	1048.5	652.7	-37.7	36.5	47.4	29.9	1012.0	605.3
South Africa	78.1	109.4	40.1	34.4	20.2	-41.3	43.7	89.2
Syrian Arab Republic	153.3	45.1	-70.6	34.0	14.7	-56.8	119.3	30.4
Taiwan	36.0	43.1	19.7	186.2	199.6	7.2	-150.2	-156.5
United Arab Emirates	455.5	399.1	-12.4	87.1	134.6	54.5	368.4	264.5
Viet Nam	32.4	68.5	111.4	84.9	81.6	-3.9	-52.5	-13.1

¹ Partner country:

- In case of exports (or dispatches) is the country (or Member State) of final destination of the goods.
- In case of imports (or arrivals) is the country (or Member State) of consignment of the goods.

² Data are preliminary as of 8-th of February 2016.



Table 4

Exports, imports and trade balance of Bulgaria by sections of SITC, rev.4 in the period January - November 2014 and 2015¹

Sections by SITC	Exports - FOB			Imports - CIF			Trade balance - FOB/CIF	
	2014	2015	Change compared to the same period of the previous year - %	2014	2015	Change compared to the same period of the previous year - %	2014	2015
	Million BGN			Million BGN			Million BGN	
Total	39808.9	41916.0	5.3	46712.9	47372.8	1.4	-6904.0	-5456.8
of which EU	24865.7	26920.3	8.3	28689.3	30387.3	5.9	-3823.6	-3467.0
Food and live animals	4269.1	4385.9	2.7	3345.3	3621.5	8.3	923.8	764.4
of which EU	2897.1	2974.5	2.7	2802.0	2893.4	3.3	95.1	81.1
Beverages and tobacco	787.4	756.7	-3.9	614.0	659.5	7.4	173.4	97.2
of which EU	263.3	263.9	0.2	428.1	527.7	23.3	-164.8	-263.8
Crude materials, inedible (except fuel)	2892.8	2746.3	-5.1	3836.2	4032.1	5.1	-943.4	-1285.8
of which EU	1747.6	1719.9	-1.6	2334.7	2318.0	-0.7	-587.1	-598.1
Mineral fuel, lubricants and related materials	5185.3	4521.8	-12.8	9349.1	7421.5	-20.6	-4163.8	-2899.7
of which EU	1111.5	1299.4	16.9	1727.3	1314.4	-23.9	-615.8	-15.0
Animals and vegetable oils, fats and waxes	398.7	443.0	11.1	170.3	162.4	-4.6	228.4	280.6
of which EU	299.2	299.3	0.0	130.1	110.7	-14.9	169.1	188.6
Chemical and related products n.e.c.	3634.9	4125.1	13.5	6016.7	6651.8	10.6	-2381.8	-2526.7
of which EU	1938.0	2365.5	22.1	4624.6	5110.9	10.5	-2686.6	-2745.4
Manufactured goods classified chiefly by material	8933.2	9400.3	5.2	8159.4	8038.8	-1.5	773.8	1361.5
of which EU	5974.7	6450.9	8.0	4977.9	5034.4	1.1	996.8	1416.5
Machinery and transport equipment	7724.6	8865.4	14.8	11647.3	12783.2	9.8	-3922.7	-3917.8
of which EU	5677.6	6384.2	12.4	8993.4	10150.7	12.9	-3315.8	-3766.5
Miscellaneous manufactured articles	5883.0	6560.9	11.5	3329.9	3746.4	12.5	2553.1	2814.5
of which EU	4891.3	5081.6	3.9	2459.1	2698.6	9.7	2432.2	2383.0
Commodities and transactions n.e.c.	99.9	110.6	10.7	244.7	255.6	4.5	-144.8	-145.0
of which EU	65.4	81.1	24.0	212.1	228.5	7.7	-146.7	-147.4

¹ Data are preliminary as of 8-th of February 2016.