

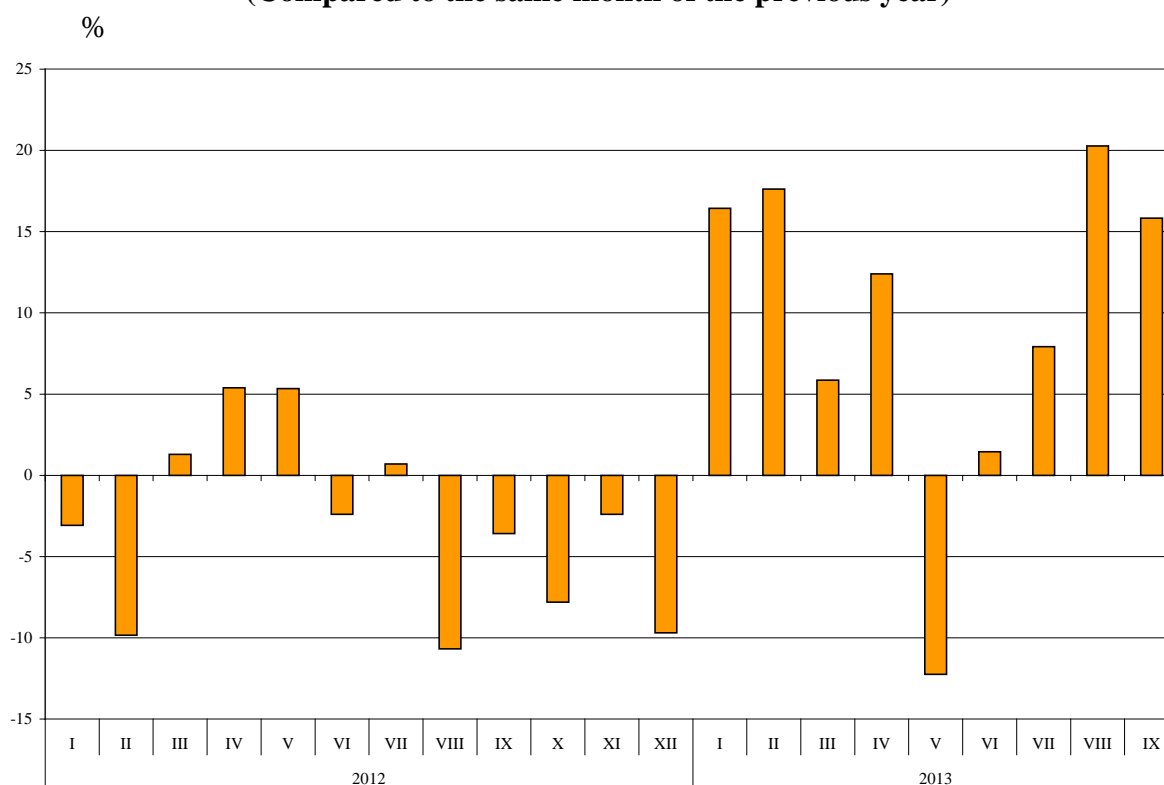


## BULGARIAN TRADE WITH EU FOR THE PERIOD JANUARY - SEPTEMBER 2013 (PRELIMINARY DATA)

In the period **January - September 2013** the Bulgarian **exports to the EU** increased by 9.0% compared to the corresponding period of the previous year and amounted to 19.5 Billion BGN (Annex, Table 1 and 2). Main trade partners of Bulgaria were Germany, Italy, Romania, Greece and France which accounted for 68.0% of the exports to the EU Member States (Annex, Table 3).

In **September 2013** the exports to the EU increased by 15.8% compared to the corresponding month of the previous year and amounted to 2.5 Billion BGN.

**Figure 1. Nominal value<sup>1</sup> change of exports of Bulgaria to EU for the period 2012 – 2013  
(Compared to the same month of the previous year)**



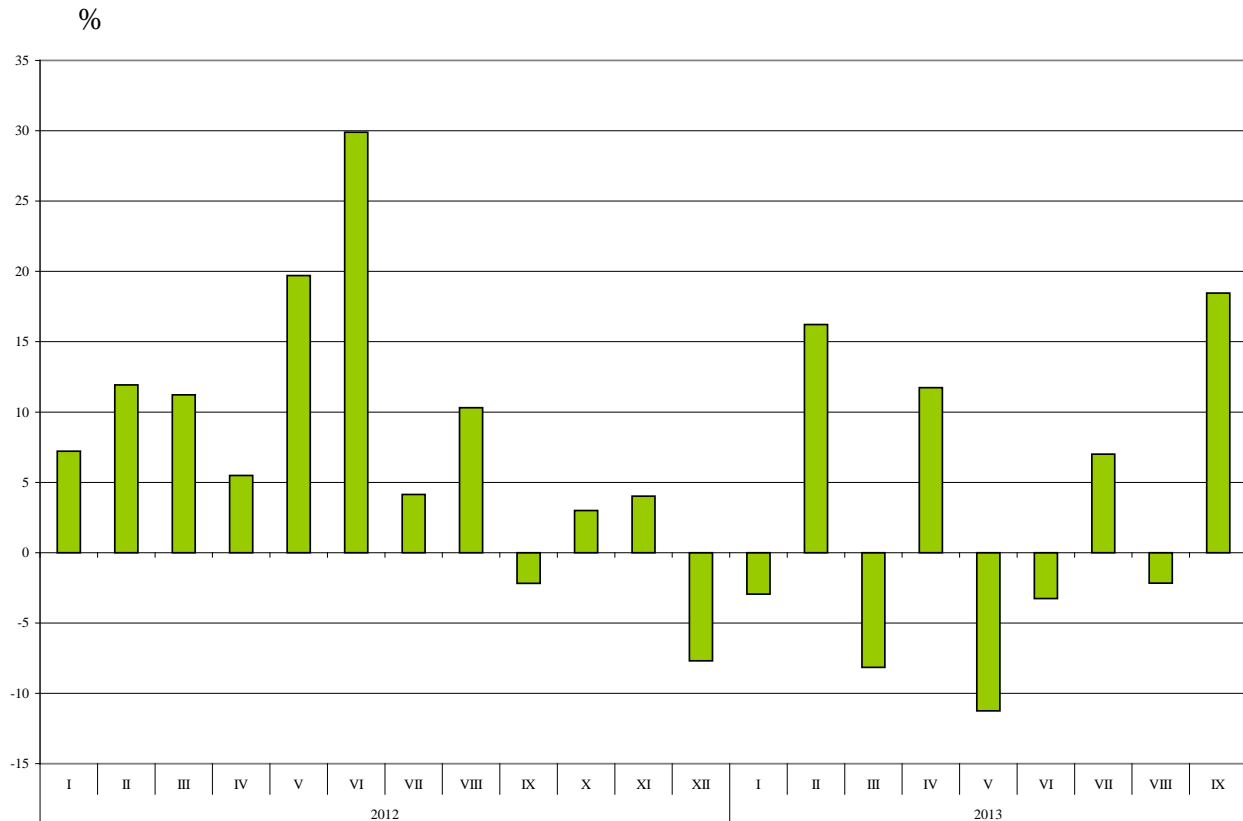
Bulgarian **imports from the EU** in the period January - September 2013 grew by 2.5% compared to the corresponding period of the previous year and added up to 22.2 Billion BGN at CIF prices (Annex, Tables 1 and 2). The largest amounts were reported for the goods imported from Germany, Italy, Romania, Greece and Spain (Annex, Table 3).

In September 2013 the Bulgarian imports from the EU Member States increased by 18.5% compared to the corresponding month of the previous year and amounted to 2.8 Billion BGN at CIF prices.

<sup>1</sup> Value changes at current prices.



**Figure 2. Nominal value<sup>1</sup> change of imports of Bulgaria from EU for the period 2012 – 2013  
(Compared to the same month of the previous year)**



The **foreign trade balance** of Bulgaria (export FOB - import CIF) **with EU** in the period January – September 2013 was negative and added up to 2 705.7 Million BGN (Annex, Table 1). At FOB/FOB prices (after elimination of transport and insurance costs on imports) the trade balance was also negative and amounted to 1 687.0 Million BGN.

In the first nine months of 2013 compared to the corresponding period of the previous year the largest growths **in the exports** of Bulgaria **to EU** distributed according to the Standard International Trade Classification were recorded in the sections “Animals and vegetable oils, fats and waxes” (24.0%) and “Beverages and tobacco” (23.9%) (Annex, Table 4). A fall (7.9%) was recorded in section “Mineral fuels, lubricants and related materials”.

**In imports** from EU the largest increase (10.7%) was reported in section “Crude materials, inedible (except fuel)” while the most notable fall (2.1%) was observed in the section “Machinery and transport equipment”.

<sup>1</sup> Value changes at current prices.

## Annex

### Exports, imports and trade balance of Bulgaria for the period January - September 2012 and 2013<sup>1</sup> by months

Table 1

(Million BGN)

Months/Periods	Exports - FOB			Imports - CIF			Imports - FOB <sup>2</sup>			Trade balance - FOB/CIF			Trade balance - FOB/FOB <sup>2</sup>		
	Total	EU <sup>3</sup>	Non EU <sup>4</sup>	Total	EU <sup>3</sup>	Non EU <sup>4</sup>	Total	EU <sup>3</sup>	Non EU <sup>4</sup>	Total	EU <sup>3</sup>	Non EU <sup>4</sup>	Total	EU <sup>3</sup>	Non EU <sup>4</sup>
I.2012	2810.3	1733.9	1076.4	3501.3	2130.3	1371.0	3330.7	2029.9	1300.8	-691.0	-396.4	-294.6	-520.4	-296.0	-224.4
II.2012	2862.9	1659.7	1203.2	3603.3	2125.2	1478.1	3433.5	2032.3	1401.2	-740.4	-465.5	-274.9	-570.6	-372.6	-198.0
III.2012	3363.6	2053.3	1310.3	4207.2	2540.7	1666.5	4008.0	2426.2	1581.8	-843.6	-487.4	-356.2	-644.4	-372.9	-271.5
<b>I - III.2012</b>	<b>9036.8</b>	<b>5446.9</b>	<b>3589.9</b>	<b>11311.8</b>	<b>6796.2</b>	<b>4515.6</b>	<b>10772.2</b>	<b>6488.4</b>	<b>4283.8</b>	<b>-2275.0</b>	<b>-1349.3</b>	<b>-925.7</b>	<b>-1735.4</b>	<b>-1041.5</b>	<b>-693.9</b>
IV.2012	3171.8	1950.5	1221.3	4277.3	2348.4	1928.9	4068.0	2245.9	1822.1	-1105.5	-397.9	-707.6	-896.2	-295.4	-600.8
V.2012	3647.7	2149.9	1497.8	4646.8	2679.1	1967.7	4420.4	2556.6	1863.8	-999.1	-529.2	-469.9	-772.7	-406.7	-366.0
VI.2012	3462.2	2017.5	1444.7	4372.3	2643.4	1728.9	4158.3	2517.6	1640.7	-910.1	-625.9	-284.2	-696.1	-500.1	-196.0
<b>IV - VI.2012</b>	<b>10281.7</b>	<b>6117.9</b>	<b>4163.8</b>	<b>13296.4</b>	<b>7670.9</b>	<b>5625.5</b>	<b>12646.7</b>	<b>7320.1</b>	<b>5326.6</b>	<b>-3014.7</b>	<b>-1553.0</b>	<b>-1461.7</b>	<b>-2365.0</b>	<b>-1202.2</b>	<b>-1162.8</b>
<b>I - VI.2012</b>	<b>19318.5</b>	<b>11564.8</b>	<b>7753.7</b>	<b>24608.2</b>	<b>14467.1</b>	<b>10141.1</b>	<b>23418.9</b>	<b>13808.5</b>	<b>9610.4</b>	<b>-5289.7</b>	<b>-2902.3</b>	<b>-2387.4</b>	<b>-4100.4</b>	<b>-2243.7</b>	<b>-1856.7</b>
VII.2012	3645.9	2251.4	1394.5	4341.6	2657.5	1684.1	4134.1	2536.4	1597.7	-695.7	-406.1	-289.6	-488.2	-285.0	-203.2
VIII.2012	3658.4	1979.5	1678.9	4115.4	2232.0	1883.4	3913.7	2134.6	1779.1	-457.0	-252.5	-204.5	-255.3	-155.1	-100.2
IX.2012	3549.9	2120.9	1429.0	4033.4	2351.8	1681.6	3836.8	2248.9	1587.9	-483.5	-230.9	-252.6	-286.9	-128.0	-158.9
<b>VII - IX.2012</b>	<b>10854.2</b>	<b>6351.8</b>	<b>4502.4</b>	<b>12490.4</b>	<b>7241.3</b>	<b>5249.1</b>	<b>11884.6</b>	<b>6919.9</b>	<b>4964.7</b>	<b>-1636.2</b>	<b>-889.5</b>	<b>-746.7</b>	<b>-1030.4</b>	<b>-568.1</b>	<b>-462.3</b>
<b>I - IX.2012</b>	<b>30172.7</b>	<b>17916.6</b>	<b>12256.1</b>	<b>37098.6</b>	<b>21708.4</b>	<b>15390.2</b>	<b>35303.5</b>	<b>20728.4</b>	<b>14575.1</b>	<b>-6925.9</b>	<b>-3791.8</b>	<b>-3134.1</b>	<b>-5130.8</b>	<b>-2811.8</b>	<b>-2319.0</b>
I.2013	3474.0	2018.8	1455.2	3726.2	2067.6	1658.6	3540.1	1974.3	1565.8	-252.2	-48.8	-203.4	-66.1	44.5	-110.6
II.2013	3241.1	1952.2	1288.9	4058.6	2470.1	1588.5	3852.3	2350.6	1501.7	-817.5	-517.9	-299.6	-611.2	-398.4	-212.8
III.2013	3478.4	2173.7	1304.7	3860.3	2333.6	1526.7	3681.2	2232.5	1448.7	-381.9	-159.9	-222.0	-202.8	-58.8	-144.0
<b>I - III.2013</b>	<b>10193.5</b>	<b>6144.7</b>	<b>4048.8</b>	<b>11645.1</b>	<b>6871.3</b>	<b>4773.8</b>	<b>11073.6</b>	<b>6557.4</b>	<b>4516.2</b>	<b>-1451.6</b>	<b>-726.6</b>	<b>-725.0</b>	<b>-880.1</b>	<b>-412.7</b>	<b>-467.4</b>
IV.2013	3847.7	2192.4	1655.3	4365.0	2623.9	1741.1	4159.1	2502.3	1656.8	-517.3	-431.5	-85.8	-311.4	-309.9	-1.5
V.2013	3315.6	1886.7	1428.9	4141.1	2377.9	1763.2	3942.0	2272.0	1670.0	-825.5	-491.2	-334.3	-626.4	-385.3	-241.1
VI.2013	3444.6	2046.7	1397.9	4249.7	2557.1	1692.6	4043.8	2440.8	1603.0	-805.1	-510.4	-294.7	-599.2	-394.1	-205.1
<b>IV - VI.2013</b>	<b>10607.9</b>	<b>6125.8</b>	<b>4482.1</b>	<b>12755.8</b>	<b>7558.9</b>	<b>5196.9</b>	<b>12144.9</b>	<b>7215.1</b>	<b>4929.8</b>	<b>-2147.9</b>	<b>-1433.1</b>	<b>-714.8</b>	<b>-1537.0</b>	<b>-1089.3</b>	<b>-447.7</b>
<b>I - VI.2013</b>	<b>20801.4</b>	<b>12270.5</b>	<b>8530.9</b>	<b>24400.9</b>	<b>14430.2</b>	<b>9970.7</b>	<b>23218.5</b>	<b>13772.5</b>	<b>9446.0</b>	<b>-3599.5</b>	<b>-2159.7</b>	<b>-1439.8</b>	<b>-2417.1</b>	<b>-1502.0</b>	<b>-915.1</b>
VII.2013	3979.6	2429.7	1549.9	4666.4	2843.7	1822.7	4435.2	2711.5	1723.7	-686.8	-414.0	-272.8	-455.6	-281.8	-173.8
VIII.2013	3913.9	2380.7	1533.2	3869.6	2183.5	1686.1	3678.1	2085.2	1592.9	44.3	197.2	-152.9	235.8	295.5	-59.7
IX.2013	3787.3	2456.7	1330.6	4560.4	2785.9	1774.5	4332.6	2655.4	1677.2	-773.1	-329.2	-443.9	-545.3	-198.7	-346.6
<b>VII - IX.2013</b>	<b>11680.8</b>	<b>7267.1</b>	<b>4413.7</b>	<b>13096.4</b>	<b>7813.1</b>	<b>5283.3</b>	<b>12445.9</b>	<b>7452.1</b>	<b>4993.8</b>	<b>-1415.6</b>	<b>-546.0</b>	<b>-869.6</b>	<b>-765.1</b>	<b>-185.0</b>	<b>-580.1</b>
<b>I - IX.2013</b>	<b>32482.2</b>	<b>19537.6</b>	<b>12944.6</b>	<b>37497.3</b>	<b>22243.3</b>	<b>15254.0</b>	<b>35664.4</b>	<b>21224.6</b>	<b>14439.8</b>	<b>-5015.1</b>	<b>-2705.7</b>	<b>-2309.4</b>	<b>-3182.2</b>	<b>-1687.0</b>	<b>-1495.2</b>

<sup>1</sup> Data are preliminary as of 09.12.2013

<sup>2</sup> By data of BNB for the transport costs.

<sup>3</sup> EU including Croatia also for the periods prior 1-st of July 2013.

<sup>4</sup> Non EU excluding Croatia also for the periods prior 1-st of July 2013.



**Table 2**

**Value changes of exports and imports of Bulgaria for the period January -September 2013<sup>1</sup>  
compared to the same period of the previous year**

(Per cent)

Months/Periods	Exports - FOB			Imports - CIF			Imports - FOB		
	Total	EU <sup>2</sup>	Non EU <sup>3</sup>	Total	EU <sup>2</sup>	Non EU <sup>3</sup>	Total	EU <sup>2</sup>	Non EU <sup>3</sup>
I	23.6	16.4	35.2	6.4	-2.9	21.0	6.3	-2.7	20.4
II	13.2	17.6	7.1	12.6	16.2	7.5	12.2	15.7	7.2
III	3.4	5.9	-0.4	-8.2	-8.2	-8.4	-8.2	-8.0	-8.4
<b>I - III</b>	<b>12.8</b>	<b>12.8</b>	<b>12.8</b>	<b>2.9</b>	<b>1.1</b>	<b>5.7</b>	<b>2.8</b>	<b>1.1</b>	<b>5.4</b>
IV	21.3	12.4	35.5	2.1	11.7	-9.7	2.2	11.4	-9.1
V	-9.1	-12.2	-4.6	-10.9	-11.2	-10.4	-10.8	-11.1	-10.4
VI	-0.5	1.4	-3.2	-2.8	-3.3	-2.1	-2.8	-3.1	-2.3
<b>IV - VI</b>	<b>3.2</b>	<b>0.1</b>	<b>7.6</b>	<b>-4.1</b>	<b>-1.5</b>	<b>-7.6</b>	<b>-4.0</b>	<b>-1.4</b>	<b>-7.4</b>
<b>I - VI</b>	<b>7.7</b>	<b>6.1</b>	<b>10.0</b>	<b>-0.8</b>	<b>-0.3</b>	<b>-1.7</b>	<b>-0.9</b>	<b>-0.3</b>	<b>-1.7</b>
VII	9.2	7.9	11.1	7.5	7.0	8.2	7.3	6.9	7.9
VIII	7.0	20.3	-8.7	-6.0	-2.2	-10.5	-6.0	-2.3	-10.5
IX	6.7	15.8	-6.9	13.1	18.5	5.5	12.9	18.1	5.6
<b>VII - IX</b>	<b>7.6</b>	<b>14.4</b>	<b>-2.0</b>	<b>4.9</b>	<b>7.9</b>	<b>0.7</b>	<b>4.7</b>	<b>7.7</b>	<b>0.6</b>
<b>I - IX</b>	<b>7.7</b>	<b>9.0</b>	<b>5.6</b>	<b>1.1</b>	<b>2.5</b>	<b>-0.9</b>	<b>1.0</b>	<b>2.4</b>	<b>-0.9</b>

<sup>1</sup> Data are preliminary as of 09.12.2013.

<sup>2</sup> EU including Croatia also for the periods prior 1<sup>st</sup> of July 2013.

<sup>3</sup> Non EU excluding Croatia also for the periods prior 1<sup>st</sup> of July 2013.



Table 3

Exports, imports and trade balance by groups of countries and main partner countries<sup>1</sup> of Bulgaria for the period January - September 2012 and 2013<sup>2</sup>

Countries and groups of countries	Exports - FOB			Imports - CIF			Trade balance - FOB/CIF	
	2012	2013	Change compared to the same period of the previous year - %	2012	2013	Change compared to the same period of the previous year - %	2012	2013
	Million BGN			Million BGN			Million BGN	
<b>Total</b>	<b>557.8</b>	<b>580.8</b>	<b>4.1</b>	<b>1134.2</b>	<b>1035.1</b>	<b>-8.7</b>	<b>-576.4</b>	<b>-454.3</b>
EU <sup>3</sup>	1049.1	846.6	-19.3	639.3	698.3	9.2	409.8	148.3
Austria	109.7	71.1	-35.2	41.6	54.8	31.7	68.1	16.3
Belgium	122.6	104.7	-14.6	134.4	66.4	-50.6	-11.8	38.3
Croatia	358.7	397.6	10.8	685.3	759.0	10.8	-326.6	-361.4
Cyprus	134.6	156.2	16.0	133.7	131.7	-1.5	0.9	24.5
Czech Republic	16.7	27.6	65.3	8.4	16.5	96.4	8.3	11.1
Denmark	52.0	52.7	1.3	95.3	64.3	-32.5	-43.3	-11.6
Estonia	1228.1	1389.1	13.1	1055.9	1084.9	2.7	172.2	304.2
Finland	3074.8	4110.1	33.7	4171.1	3998.3	-4.1	-1096.3	111.8
France	2206.8	2311.9	4.8	2162.5	2111.3	-2.4	44.3	200.6
Germany	352.4	394.9	12.1	1069.3	1116.2	4.4	-716.9	-721.3
Greece	51.0	31.2	-38.8	122.3	125.5	2.6	-71.3	-94.3
Hungary	2579.7	2931.0	13.6	2464.1	2771.8	12.5	115.6	159.2
Ireland	37.4	35.2	-5.9	25.4	16.6	-34.6	12.0	18.6
Italy	48.5	60.7	25.2	66.5	59.9	-9.9	-18.0	0.8
Latvia	5.2	5.3	1.9	30.3	68.0	124.4	-25.1	-62.7
Lithuania	14.4	33.4	131.9	86.6	9.1	-89.5	-72.2	24.3
Luxembourg	529.8	715.6	35.1	1136.8	957.5	-15.8	-607.0	-241.9
Malta	526.8	587.4	11.5	765.0	1018.7	33.2	-238.2	-431.3
Netherlands	256.4	204.8	-20.1	121.1	71.2	-41.2	135.3	133.6
Poland	2474.1	2534.6	2.4	2459.2	2474.1	0.6	14.9	60.5
Portugal	180.4	234.9	30.2	468.3	461.4	-1.5	-287.9	-226.5
Romania	289.8	136.8	-52.8	226.2	242.1	7.0	63.6	-105.3
Slovakia	900.9	724.1	-19.6	1651.7	2029.6	22.9	-750.8	-1305.5
Slovenia	134.9	158.4	17.4	199.3	213.1	6.9	-64.4	-54.7
Spain	588.6	651.3	10.7	525.2	560.2	6.7	63.4	91.1
Sweden	35.4	49.6	40.1	29.4	27.7	-5.8	6.0	21.9
United Kingdom	557.8	580.8	4.1	1134.2	1035.1	-8.7	-576.4	-454.3
Not specified	1049.1	846.6	-19.3	639.3	698.3	9.2	409.8	148.3

<sup>1</sup> Partner country:

- In case of exports (or dispatches) is the country (or Member State) of final destination of the goods
- In case of imports (or arrivals) is the country (or Member State) of consignment of the goods.

<sup>2</sup> Data are preliminary as of 09.12.2013.

<sup>3</sup> EU including Croatia.

Table 3

Exports, imports and trade balance by groups of countries and main partner countries<sup>1</sup> of Bulgaria for the period January - September 2012 and 2013<sup>2</sup>

(Continued)

Countries and groups of countries	Exports - FOB			Imports - CIF			Trade balance - FOB/CIF	
	2012	2013	Change compared to the same period of the previous year - %	2012	2013	Change compared to the same period of the previous year - %	2012	2013
	Million BGN			Million BGN			Million BGN	
<b>Non EU countries<sup>3</sup></b>	<b>12256.1</b>	<b>12944.6</b>	<b>5.6</b>	<b>15390.2</b>	<b>15254.0</b>	<b>-0.9</b>	<b>-3134.1</b>	<b>-2309.4</b>
<b>CIS<sup>4</sup></b>	<b>1488.8</b>	<b>1748.3</b>	<b>17.4</b>	<b>8833.1</b>	<b>8148.4</b>	<b>-7.8</b>	<b>-7344.3</b>	<b>-6400.1</b>
of which:								
Kazakhstan	47.3	39.0	-17.5	56.2	61.2	8.9	-8.9	-22.2
Russian Federation	817.8	840.4	2.8	7691.8	7111.3	-7.5	-6874.0	-6270.9
Ukraine	361.0	611.8	69.5	965.5	824.6	-14.6	-604.5	-212.8
<b>OECD<sup>5</sup></b>	<b>4300.7</b>	<b>4314.4</b>	<b>0.3</b>	<b>2711.6</b>	<b>3333.0</b>	<b>22.9</b>	<b>1589.1</b>	<b>981.4</b>
of which:								
Canada	166.6	124.4	-25.3	63.1	23.6	-62.6	103.5	100.8
Israel	141.0	139.6	-1.0	88.5	71.6	-19.1	52.5	68.0
Japan	36.3	42.0	15.7	95.7	95.3	-0.4	-59.4	-53.3
Korea, Republic of	187.0	139.2	-25.6	142.7	131.9	-7.6	44.3	7.3
Turkey	2876.9	3064.5	6.5	1707.7	2172.4	27.2	1169.2	892.1
United States	536.5	435.5	-18.8	258.3	269.7	4.4	278.2	165.8
<b>EFTA<sup>6</sup></b>	<b>280.2</b>	<b>287.1</b>	<b>2.5</b>	<b>302.4</b>	<b>324.7</b>	<b>7.4</b>	<b>-22.2</b>	<b>-37.6</b>
of which:								
Norway	44.7	51.6	15.4	9.8	23.0	134.7	34.9	28.6
Switzerland	227.7	225.0	-1.2	292.0	301.3	3.2	-64.3	-76.3

<sup>1</sup> Partner country:

- In case of exports (or dispatches) is the country (or Member State) of final destination of the goods

- In case of imports (or arrivals) is the country (or Member State) of consignment of the goods.

<sup>2</sup> Data are preliminary as of 9.12.2013.

<sup>3</sup> Non EU excluding Croatia

<sup>4</sup> CIS includes: Azerbaijan; Armenia; Belarus; Kazakhstan; Kyrgyz, Republic; Moldova, Republic of; Russian Federation; Tajikistan; Turkmenistan; Uzbekistan and Ukraine.

<sup>5</sup> OECD includes: Australia; Virgin Islands (US); United States; Iceland; Canada; Mexico; New Zealand; Norway; Korea, Republic of; Turkey; Switzerland; Japan; Israel and Chile.

<sup>6</sup> EFTA includes: Norway; Switzerland; Iceland and Liechtenstein.



Table 3

Exports, imports and trade balance by groups of countries and main partner countries<sup>1</sup> of Bulgaria for the period January - September 2012 and 2013<sup>2</sup>

(Continued and end)

Countries and groups of countries	Exports - FOB			Imports - CIF			Trade balance - FOB/CIF	
	2012	2013	Change compared to the same period of the previous year - %	2012	2013	Change compared to the same period of the previous year - %	2012	2013
	Million BGN			Million BGN			Million BGN	
<b>Countries not included in the upper groups</b>								
Albania	72.6	95.1	31.0	27.4	23.6	-13.9	45.2	71.5
Bosnia and Herzegovina	52.3	59.3	13.4	25.3	41.5	64.0	27.0	17.8
Brazil	63.6	18.3	-71.2	201.7	72.1	-64.3	-138.1	-53.8
China	913.3	862.0	-5.6	1176.1	1111.3	-5.5	-262.8	-249.3
Egypt	175.9	262.0	48.9	72.3	78.4	8.4	103.6	183.6
Former Yugoslav Republic of Macedonia	588.0	502.8	-14.5	362.0	407.0	12.4	226.0	95.8
Georgia	371.8	272.7	-26.7	234.1	330.3	41.1	137.7	-57.6
India	51.2	42.8	-16.4	109.4	171.6	56.9	-58.2	-128.8
Indonesia	22.4	38.4	71.4	36.3	42.0	15.7	-13.9	-3.6
Iran, Islamic Republic of	30.0	19.4	-35.3	7.3	2.3	-68.5	22.7	17.1
Peru	3.7	11.2	202.7	159.0	11.8	-92.6	-155.3	-0.6
Serbia	683.9	547.5	-19.9	366.0	366.1	0.0	317.9	181.4
Singapore	87.9	301.7	243.2	21.6	18.8	-13.0	66.3	282.9
South Africa	88.9	279.5	214.4	52.5	42.5	-19.0	36.4	237.0
Syrian Arab Republic	33.8	94.3	179.0	61.1	25.3	-58.6	-27.3	69.0
Taiwan	37.3	36.0	-3.5	99.2	96.1	-3.1	-61.9	-60.1
United Arab Emirates	182.5	243.5	33.4	94.6	64.9	-31.4	87.9	178.6
Viet Nam	17.4	22.8	31.0	44.5	45.2	1.6	-27.1	-22.4

<sup>1</sup> Partner country:

- In case of exports (or dispatches) is the country (or Member State) of final destination of the goods
- In case of imports (or arrivals) is the country (or Member State) of consignment of the goods.

<sup>2</sup> Data are preliminary as of 09.12.2013.



Exports, imports and trade balance of Bulgaria by sections of SITC, rev.4 for the period January - September 2012 and 2013<sup>1</sup>

Sections by SITC	Exports - FOB			Imports - CIF			Trade balance - FOB/CIF	
	2012	2013	Change compared to the same period of the previous year - %	2012	2013	Change compared to the same period of the previous year - %	2012	2013
	Million BGN			Million BGN			Million BGN	
<b>Total</b>	<b>30172.7</b>	<b>32482.2</b>	<b>7.7</b>	<b>37098.6</b>	<b>37497.3</b>	<b>1.1</b>	<b>-6925.9</b>	<b>-5015.1</b>
<b>of which EU<sup>2</sup></b>	<b>17916.6</b>	<b>19537.6</b>	<b>9.0</b>	<b>21708.4</b>	<b>22243.3</b>	<b>2.5</b>	<b>-3791.8</b>	<b>-2705.7</b>
Food and live animals	3070.1	3559.6	15.9	2580.0	2669.1	3.5	490.1	890.5
of which EU	2385.9	2392.1	0.3	2242.4	2218.3	-1.1	143.5	173.8
Beverages and tobacco	636.0	735.2	15.6	477.6	489.3	2.4	158.4	245.9
of which EU	224.7	278.5	23.9	356.1	364.9	2.5	-131.4	-86.4
Crude materials, inedible (except fuel)	2705.7	2774.7	2.6	3332.3	3571.2	7.2	-626.6	-796.5
of which EU	1243.0	1446.8	16.4	1999.4	2213.3	10.7	-756.4	-766.5
Mineral fuel, lubricants and related materials	4857.2	5005.2	3.0	9205.3	8852.4	-3.8	-4348.1	-3847.2
of which EU	1237.5	1139.2	-7.9	1362.9	1373.3	0.8	-125.4	-234.1
Animals and vegetable oils, fats and waxes	217.2	252.2	16.1	171.7	164.2	-4.4	45.5	88.0
of which EU	162.6	201.7	24.0	124.2	131.8	6.1	38.4	69.9
Chemical and related products n.e.c.	2539.4	2663.9	4.9	4243.0	4604.3	8.5	-1703.6	-1940.4
of which EU	1203.5	1422.1	18.2	3261.0	3474.5	6.5	-2057.5	-2052.4
Manufactured goods classified chiefly by material	6948.4	7325.2	5.4	5795.9	6007.5	3.7	1152.5	1317.7
of which EU	4322.4	4893.7	13.2	3689.1	3744.1	1.5	633.3	1149.6
Machinery and transport equipment	4931.1	5789.5	17.4	8984.0	8566.7	-4.6	-4052.9	-2777.2
of which EU	3595.3	4128.7	14.8	6917.6	6773.9	-2.1	-3322.3	-2645.2
Miscellaneous manufactured articles	4202.3	4297.9	2.3	2222.6	2397.4	7.9	1979.7	1900.5
of which EU	3523.5	3603.0	2.3	1680.6	1793.6	6.7	1842.9	1809.4
Commodities and transactions n.e.c.	65.3	78.8	20.7	86.2	175.2	103.2	-20.9	-96.4
of which EU	18.2	31.8	74.7	75.1	155.6	107.2	-56.9	-123.8

1 Data are preliminary as of 09.12.2013.

2 EU including Croatia.