

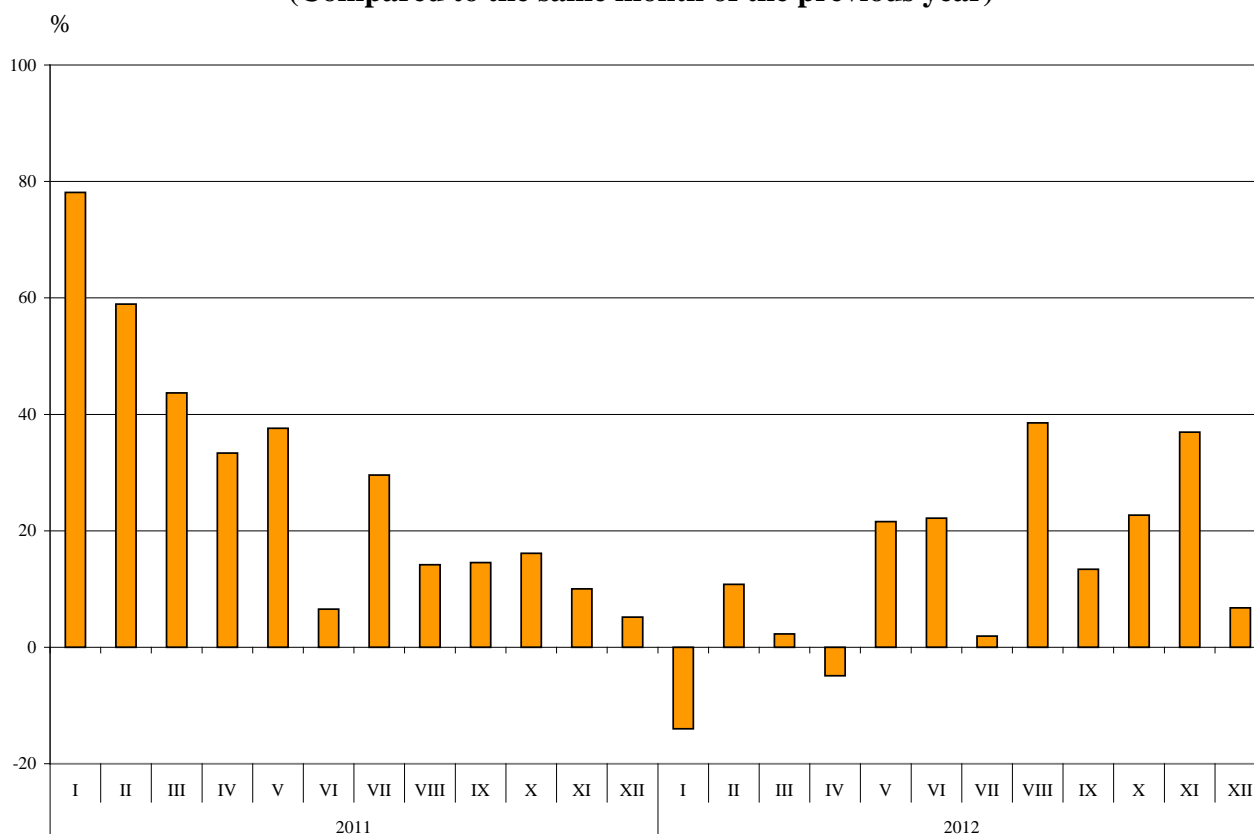


BULGARIAN TRADE WITH THIRD COUNTRIES IN 2012 (PRELIMINARY DATA)

In **2012** the Bulgarian **exports to third countries** increased by 12.8% compared to 2011 and amounted to 16.9 Billion Levs (Annex, Table 1 and 2). Main trade partners of Bulgaria were Turkey, China, Russia, Serbia, The FYR of Macedonia and USA which accounted for 50.0% of the exports to non EU countries (Annex, Table 3).

In December 2012 the exports to third countries rose by 6.8% compared to the corresponding month of the previous year and exceeded 1.3 Billion Levs.

**Figure 1. Nominal value¹ change of exports to non EU countries
for the period 2011 – 2012
(Compared to the same month of the previous year)**



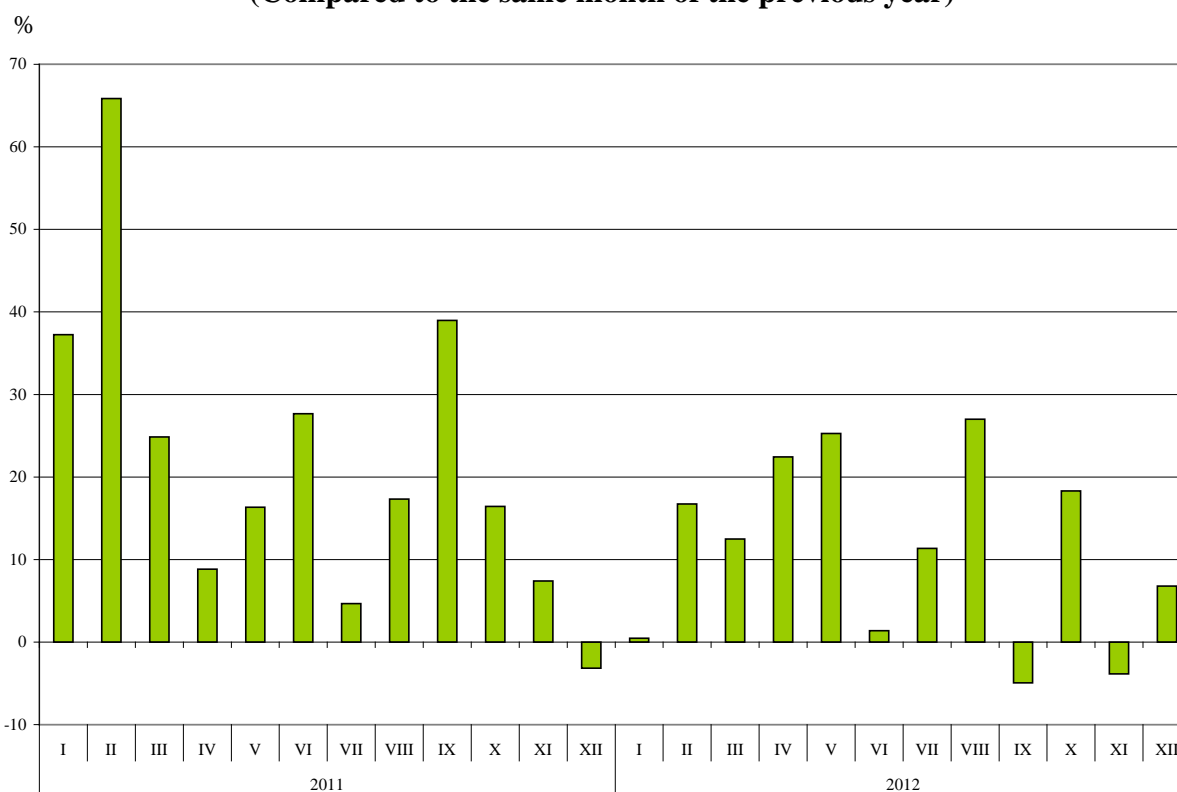
Bulgarian imports from third countries in 2012 grew by 10.8% compared to 2011 and added up to 20.6 Billion Levs (at CIF prices) (Annex, Tables 1 and 2). The largest amounts were reported for the goods imported from Russia, Turkey, China and Ukraine (Annex, Table 3).

In December 2012 the Bulgarian imports from third countries increased by 6.8% compared to the corresponding month of the previous year and amounted to 1.6 Billion Levs.

¹ Value changes at current prices.



**Figure 2. Nominal value¹ change of imports to non EU countries
for the period 2011 – 2012
(Compared to the same month of the previous year)**



The foreign trade balance of Bulgaria (export FOB - import CIF) **with third countries** in 2012 was negative and added up to 3 690.7 Million Levs (Annex, Table 1). The trade balance at FOB /FOB prices (after elimination of transport and insurance costs on imports) was also negative and amounted to 2 744.0 Million Levs.

In December 2012 the foreign trade balance of Bulgaria (export FOB - import CIF) with third countries was negative and amounted to 284.7 Million Levs.

In 2012 compared to 2011 largest growths in the exports of Bulgaria to third countries distributed according to the **Standard International Trade Classification** (Annex, Table 4) was recorded in the section “Mineral fuels, lubricants and related materials” (24.2%).

In imports from third countries the largest growth (57.6%) was reported in sections “Animal and vegetable oils, fats and waxes” while the largest decrease (23.5%) was observed in section “Food and live animals”.

¹ Value changes at current prices.

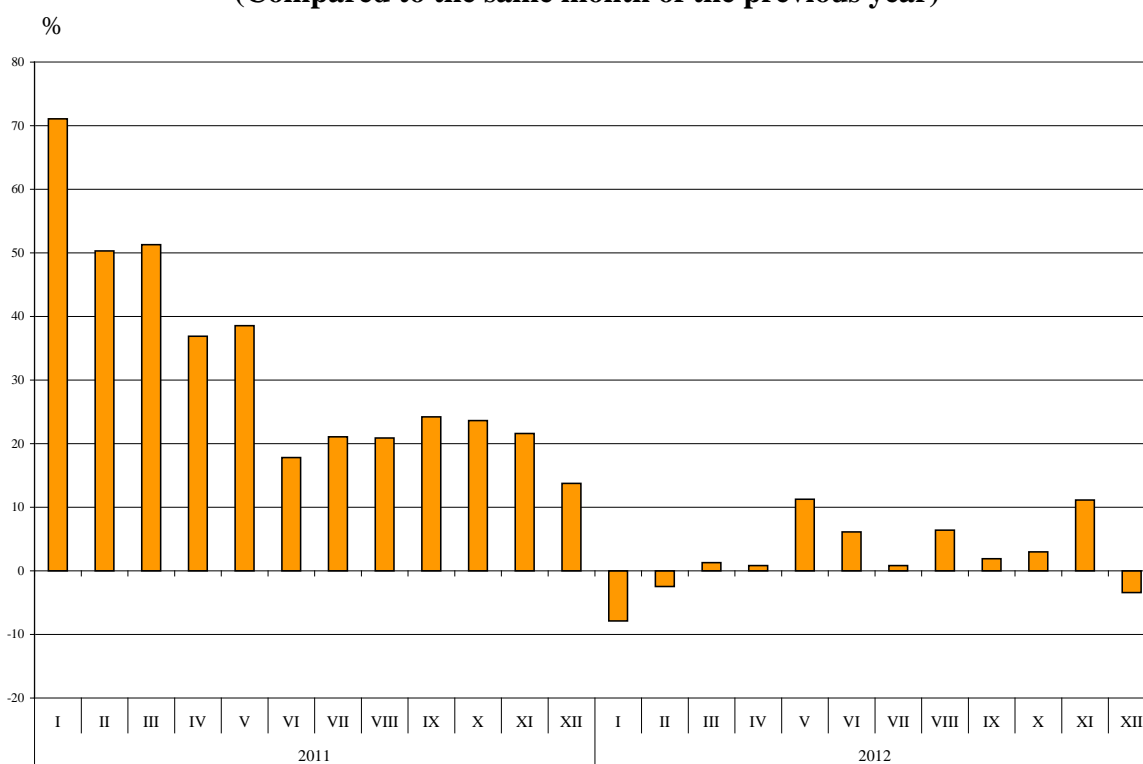


Bulgarian trade with third countries and EU – total

In 2012 the value of **all exported goods** from Bulgaria amounted to 40.7 Billion Levs and compared to 2011 the exports increased by 2.6% (Annex, Table 1 and 2).

In December 2012 the total exports added up to 3.0 Billion Levs and decreased by 3.4% compared to the corresponding month of the previous year.

**Figure 3. Nominal value¹ change of exports for the period 2011 – 2012
(Compared to the same month of the previous year)**



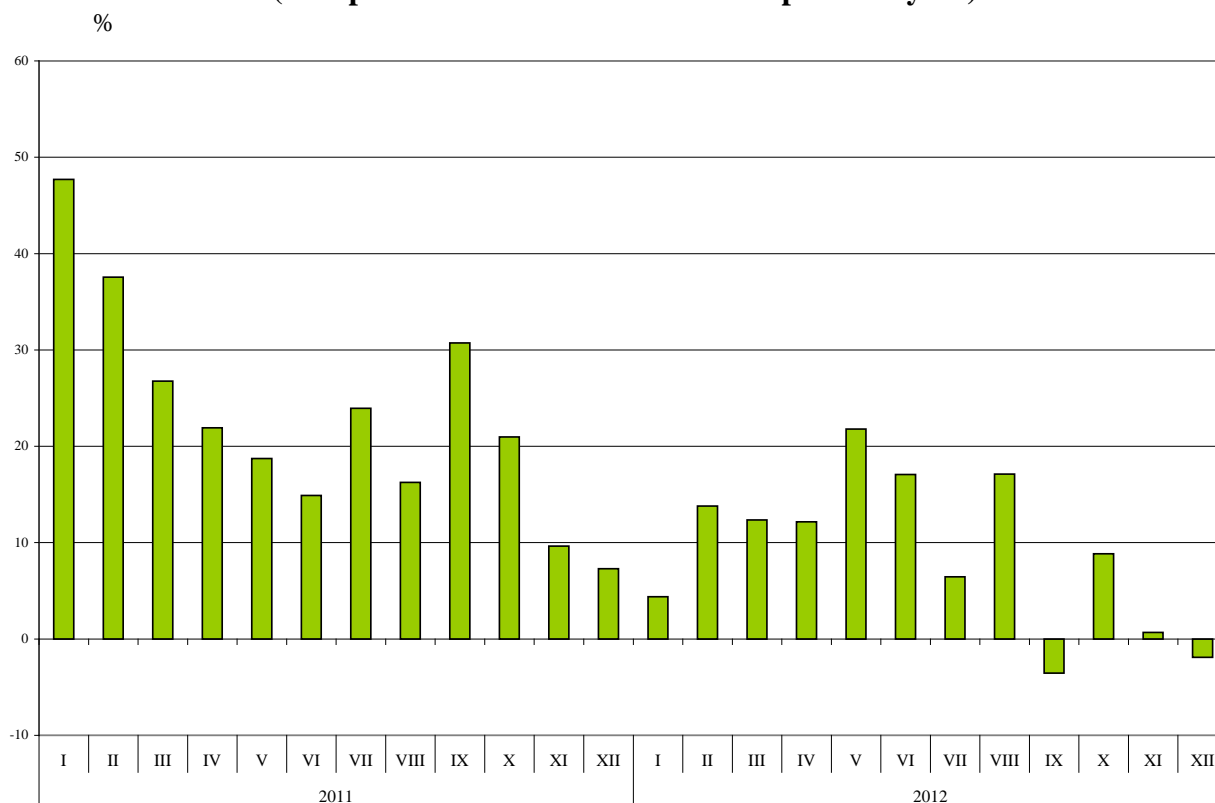
The total value of **all the goods imported in the country in 2012** amounted to 49.8 Billion Levs (at CIF prices), or by 8.8% more than 2011 (Annex, Table 1 and 2).

In December 2012 the total imports decreased by 1.9% compared to December 2011 and added up to 3.8 Billion Levs.

¹ Value changes at current prices.



**Figure 4. Nominal value¹ change of imports for the period 2011 – 2012
(Compared to the same month of the previous year)**



The **total foreign trade balance** (exports FOB - import CIF) was negative in 2012 and amounted to 9 145.1 Million Levs which was 3 000.2 Million Levs more than the balance in 2011 (Annex, Table 1 and 2). At FOB/FOB prices (after elimination of transport and insurance costs on imports) the total foreign trade balance was also negative and amounted to 7 029.4 Million Levs.

In December 2012 the total foreign trade balance (exports FOB - import CIF) was negative and added up to 825.7 Million Levs. The trade balance at FOB/FOB prices was also negative and amounted to 644.0 Million Levs.

¹ Value changes at current prices.

Exports, imports and trade balance of Bulgaria in 2011 and 2012¹ by months

(Million Levs)

Months/Periods	Exports - FOB			Imports - CIF			Imports - FOB ²			Trade balance - FOB/CIF			Trade balance - FOB/FOB ²		
	Total	EU	Non EU	Total	EU	Non EU	Total	EU	Non EU	Total	EU	Non EU	Total	EU	Non EU
I.2011	3054.5	1789.0	1265.5	3353.1	1987.0	1366.1	3211.1	1907.9	1303.2	-298.6	-198.0	-100.6	-156.6	-118.9	-37.7
II.2011	2935.1	1840.9	1094.2	3168.3	1898.6	1269.7	3041.6	1827.9	1213.7	-233.2	-57.7	-175.5	-106.5	13.0	-119.5
III.2011	3320.2	2027.1	1293.1	3772.8	2284.2	1488.6	3613.6	2193.5	1420.1	-452.6	-257.1	-195.5	-293.4	-166.4	-127.0
I - III.2011	9309.8	5657.0	3652.8	10294.2	6169.8	4124.4	9866.3	5929.3	3937.0	-984.4	-512.8	-471.6	-556.5	-272.3	-284.2
IV.2011	3144.3	1850.8	1293.5	3815.2	2226.2	1589.0	3652.4	2137.7	1514.7	-670.9	-375.4	-295.5	-508.1	-286.9	-221.2
V.2011	3283.6	2041.0	1242.6	3817.6	2238.1	1579.5	3659.2	2153.0	1506.2	-534.0	-197.1	-336.9	-375.6	-112.0	-263.6
VI.2011	3256.6	2067.1	1189.5	3749.3	2035.1	1714.2	3591.2	1958.4	1632.8	-492.7	32.0	-524.7	-334.6	108.7	-443.3
IV - VI.2011	9684.5	5958.9	3725.6	11382.1	6499.4	4882.7	10902.8	6249.1	4653.7	-1697.6	-540.5	-1157.1	-1218.3	-290.2	-928.1
I - VI.2011	18994.3	11615.9	7378.4	21676.3	12669.2	9007.1	20769.1	12178.4	8590.7	-2682.0	-1053.3	-1628.7	-1774.8	-562.5	-1212.3
VII.2011	3618.8	2235.9	1382.9	4067.4	2551.8	1515.6	3893.6	2449.2	1444.4	-448.6	-315.9	-132.7	-274.8	-213.3	-61.5
VIII.2011	3435.1	2216.1	1219.0	3500.4	2023.3	1477.1	3357.6	1945.3	1412.3	-65.3	192.8	-258.1	77.5	270.8	-193.3
IX.2011	3485.3	2199.8	1285.5	4172.6	2404.3	1768.3	3988.7	2307.3	1681.4	-687.3	-204.5	-482.8	-503.4	-107.5	-395.9
VII - IX.2011	10539.2	6651.8	3887.4	11740.4	6979.4	4761.0	11239.9	6701.8	4538.1	-1201.2	-327.6	-873.6	-700.7	-50.0	-650.7
I - IX.2011	29533.5	18267.7	11265.8	33416.7	19648.6	13768.1	32009.0	18880.2	13128.8	-3883.2	-1380.9	-2502.3	-2475.5	-612.5	-1863.0
X.2011	3531.7	2277.9	1253.8	4162.9	2548.3	1614.6	3989.8	2449.4	1540.4	-631.2	-270.4	-360.8	-458.1	-171.5	-286.6
XI.2011	3464.0	2254.5	1209.5	4301.1	2607.5	1693.6	4116.4	2501.4	1615.0	-837.1	-353.0	-484.1	-652.4	-246.9	-405.5
XII.2011	3104.4	1852.0	1252.4	3897.8	2379.3	1518.5	3735.4	2285.2	1450.2	-793.4	-527.3	-266.1	-631.0	-433.2	-197.8
X - XII.2011	10100.1	6384.4	3715.7	12361.8	7535.1	4826.7	11841.6	7236.0	4605.6	-2261.7	-1150.7	-1111.0	-1741.5	-851.6	-889.9
I - XII.2011	39633.6	24652.1	14981.5	45778.5	27183.7	18594.8	43850.6	26116.2	17734.4	-6144.9	-2531.6	-3613.3	-4217.0	-1464.1	-2752.9
I.2012	2813.9	1725.6	1088.3	3500.4	2128.1	1372.3	3355.5	2042.3	1313.2	-686.5	-402.5	-284.0	-541.6	-316.7	-224.9
II.2012	2863.1	1650.5	1212.6	3605.6	2123.5	1482.1	3456.8	2041.8	1415.0	-742.5	-473.0	-269.5	-593.7	-391.3	-202.4
III.2012	3363.2	2040.7	1322.5	4239.1	2564.8	1674.3	4065.2	2464.4	1600.8	-875.9	-524.1	-351.8	-702.0	-423.7	-278.3
I - III.2012	9040.2	5416.8	3623.4	11345.1	6816.4	4528.7	10877.5	6548.5	4329.0	-2304.9	-1399.6	-905.3	-1837.3	-1131.7	-705.6
IV.2012	3170.2	1940.1	1230.1	4279.6	2334.3	1945.3	4098.5	2245.3	1853.2	-1109.4	-394.2	-715.2	-928.3	-305.2	-623.1
V.2012	3653.2	2142.5	1510.7	4649.5	2670.9	1978.6	4452.8	2565.0	1887.8	-996.3	-528.4	-467.9	-799.6	-422.5	-377.1
VI.2012	3455.7	2002.3	1453.4	4389.8	2651.8	1738.0	4204.3	2543.3	1661.0	-934.1	-649.5	-284.6	-748.6	-541.0	-207.6
IV - VI.2012	10279.1	6084.9	4194.2	13318.9	7657.0	5661.9	12755.6	7353.6	5402.0	-3039.8	-1572.1	-1467.7	-2476.5	-1268.7	-1207.8
I - VI.2012	19319.3	11501.7	7817.6	24664.0	14473.4	10190.6	23633.1	13902.1	9731.0	-5344.7	-2971.7	-2373.0	-4313.8	-2400.4	-1913.4
VII.2012	3648.7	2239.3	1409.4	4330.0	2642.3	1687.7	4149.7	2536.3	1613.4	-681.3	-403.0	-278.3	-501.0	-297.0	-204.0
VIII.2012	3655.4	1966.8	1688.6	4099.8	2223.7	1876.1	3924.1	2139.1	1785.0	-444.4	-256.9	-187.5	-268.7	-172.3	-96.4
IX.2012	3551.4	2093.5	1457.9	4024.8	2343.9	1680.9	3852.4	2254.8	1597.6	-473.4	-250.4	-223.0	-301.0	-161.3	-139.7
VII - IX.2012	10855.5	6299.6	4555.9	12454.6	7209.9	5244.7	11926.2	6930.2	4996.0	-1599.1	-910.3	-688.8	-1070.7	-630.6	-440.1
I - IX.2012	30174.8	17801.3	12373.5	37118.6	21683.3	15435.3	35559.3	20832.3	14727.0	-6943.8	-3882.0	-3061.8	-5384.5	-3031.0	-2353.5
X.2012	3636.6	2098.5	1538.1	4531.6	2621.2	1910.4	4338.4	2519.6	1818.8	-895.0	-522.7	-372.3	-701.8	-421.1	-280.7
XI.2012	3849.6	2193.1	1656.5	4330.2	2701.8	1628.4	4148.7	2595.5	1553.2	-480.6	-508.7	28.1	-299.1	-402.4	103.3
XII.2012	2998.3	1661.3	1337.0	3824.0	2202.3	1621.7	3642.3	2092.2	1550.1	-825.7	-541.0	-284.7	-644.0	-430.9	-213.1
X - XII.2012	10484.5	5952.9	4531.6	12685.8	7525.3	5160.5	12129.4	7207.3	4922.1	-2201.3	-1572.4	-628.9	-1644.9	-1254.4	-390.5
I - XII.2012	40659.3	23754.2	16905.1	49804.4	29208.6	20595.8	47688.7	28039.6	19649.1	-9145.1	-5454.4	-3690.7	-7029.4	-4285.4	-2744.0

¹ Data are preliminary as of 11.02.2013.

² By data of BNB for the transport costs.



Table 2

Value changes of exports and imports of Bulgaria in 2012¹ compared to the same period of the previous year

(Per cent)

Months/Periods	Exports - FOB			Imports - CIF			Imports - FOB		
	Total	EU	Non EU	Total	EU	Non EU	Total	EU	Non EU
I	-7.9	-3.5	-14.0	4.4	7.1	0.5	4.5	7.0	0.8
II	-2.5	-10.3	10.8	13.8	11.8	16.7	13.7	11.7	16.6
III	1.3	0.7	2.3	12.4	12.3	12.5	12.5	12.4	12.7
I-III	-2.9	-4.2	-0.8	10.2	10.5	9.8	10.2	10.4	10.0
IV	0.8	4.8	-4.9	12.2	4.9	22.4	12.2	5.0	22.3
V	11.3	5.0	21.6	21.8	19.3	25.3	21.7	19.1	25.3
VI	6.1	-3.1	22.2	17.1	30.3	1.4	17.1	29.9	1.7
IV - VI	6.1	2.1	12.6	17.0	17.8	16.0	17.0	17.7	16.1
I - VI	1.7	-1.0	6.0	13.8	14.2	13.1	13.8	14.2	13.3
VII	0.8	0.2	1.9	6.5	3.5	11.4	6.6	3.6	11.7
VIII	6.4	-11.2	38.5	17.1	9.9	27.0	16.9	10.0	26.4
IX	1.9	-4.8	13.4	-3.5	-2.5	-4.9	-3.4	-2.3	-5.0
VII - IX	3.0	-5.3	17.2	6.1	3.3	10.2	6.1	3.4	10.1
I - IX	2.2	-2.6	9.8	11.1	10.4	12.1	11.1	10.3	12.2
X	3.0	-7.9	22.7	8.9	2.9	18.3	8.7	2.9	18.1
XI	11.1	-2.7	37.0	0.7	3.6	-3.8	0.8	3.8	-3.8
XII	-3.4	-10.3	6.8	-1.9	-7.4	6.8	-2.5	-8.4	6.9
X - XII	3.8	-6.8	22.0	2.6	-0.1	6.9	2.4	-0.4	6.9
I - XII	2.6	-3.6	12.8	8.8	7.4	10.8	8.8	7.4	10.8

¹Data are preliminary as of 11.02.2013



**Exports, imports and trade balance of Bulgaria with main non EU partner countries¹
in 2011 and 2012²**

Countries	Exports - FOB			Imports - CIF			Trade balance - FOB/CIF	
	2011	2012	Change compared to the same period of the previous year - %	2011	2012	Change compared to the same period of the previous year - %	2011	2012
	Million Levs			Million Levs			Million Levs	
Third countries -total	14981.5	16905.1	12.8	18594.8	20595.8	10.8	-3613.3	-3690.7
of which:								
Albania	101.1	97.9	-3.2	33.9	37.1	9.4	67.2	60.8
Bosnia and Herzegovina	80.5	68.7	-14.7	15.2	31.1	104.6	65.3	37.6
Brazil	57.8	68.3	18.2	188.6	281.1	49.0	-130.8	-212.8
Canada	169.9	207.3	22.0	61.0	67.8	11.1	108.9	139.5
China	574.4	1163.8	102.6	1327.6	1483.1	11.7	-753.2	-319.3
Croatia	164.3	154.0	-6.3	53.3	59.4	11.4	111.0	94.6
Egypt	333.9	335.8	0.6	149.7	112.1	-25.1	184.2	223.7
FYR of Macedonia	902.2	767.9	-14.9	490.2	500.9	2.2	412.0	267.0
Georgia	450.0	557.8	24.0	384.0	337.5	-12.1	66.0	220.3
India	125.0	66.8	-46.6	119.6	146.9	22.8	5.4	-80.1
Indonesia	24.7	36.1	46.2	36.8	50.4	37.0	-12.1	-14.3
Iran	109.4	35.0	-68.0	5.5	8.7	58.2	103.9	26.3
Israel	108.0	163.4	51.3	342.7	112.6	-67.1	-234.7	50.8
Japan	45.1	47.4	5.1	134.0	124.3	-7.2	-88.9	-76.9
Kazakhstan	43.9	59.9	36.4	137.2	76.1	-44.5	-93.3	-16.2
Korea, Rep. of	188.7	228.9	21.3	234.2	183.5	-21.6	-45.5	45.4
Norway	61.9	62.8	1.5	22.2	16.5	-25.7	39.7	46.3
Peru	4.4	6.4	45.5	119.0	161.2	35.5	-114.6	-154.8
Russian Fed.	1060.3	1099.8	3.7	8071.8	10365.9	28.4	-7011.5	-9266.1
Serbia	935.7	865.2	-7.5	496.5	488.0	-1.7	439.2	377.2
Singapore	76.0	93.8	23.4	29.4	29.0	-1.4	46.6	64.8
South Africa	131.9	229.5	74.0	39.7	65.4	64.7	92.2	164.1
Switzerland	245.9	307.0	24.8	354.8	407.8	14.9	-108.9	-100.8
Syria	58.5	37.9	-35.2	72.5	68.9	-5.0	-14.0	-31.0
Taiwan	42.1	47.7	13.3	113.5	126.6	11.5	-71.4	-78.9
Turkey	3389.6	3824.5	12.8	2164.5	2322.1	7.3	1225.1	1502.4
Ukraine	565.0	480.3	-15.0	1837.9	1252.8	-31.8	-1272.9	-772.5
United Arab Emirates	111.5	307.4	175.7	69.4	106.4	53.3	42.1	201.0
USA	518.2	727.6	40.4	384.9	338.5	-12.1	133.3	389.1
Viet-Nam	22.7	35.6	56.8	37.5	61.6	64.3	-14.8	-26.0

¹ Partner country:

- In case of exports (or dispatches) is the country (or Member State) of final destination of the goods
- In case of imports (or arrivals) is the country (or Member State) of consignment of the goods.

² Data are preliminary as of 11.02.2013.

**Exports, imports and trade balance of Bulgaria with non EU countries by sections of SITC, rev.4
in 2011 and 2012¹**

Sections by SITC	Exports - FOB			Imports - CIF			Trade balance - FOB/CIF	
	2011	2012	Change compared to the same period of the previous year - %	2011	2012	Change compared to the same period of the previous year - %	2011	2012
	Million Levs			Million Levs			Million Levs	
Third countries -total	14981.5	16905.1	12.8	18594.8	20595.8	10.8	-3613.3	-3690.7
Food and live animals	872.1	952.1	9.2	612.5	468.4	-23.5	259.6	483.7
Beverages and tobacco	474.8	562.1	18.4	154.3	168.2	9.0	320.5	393.9
Crude materials, inedible (except fuel)	1660.8	1874.2	12.8	1603.1	1714.5	6.9	57.7	159.7
Mineral fuel, lubricants and related materials	4198.1	5215.5	24.2	9231.3	10563.6	14.4	-5033.2	-5348.1
Animals and vegetable oils, fats and waxes	69.4	72.2	4.0	42.9	67.6	57.6	26.5	4.6
Chemical and related products n.e.c.	1698.9	1769.7	4.2	1151.6	1338.5	16.2	547.3	431.2
Manufactured goods classified chiefly by material	3281.8	3469.7	5.7	2834.5	2813.9	-0.7	447.3	655.8
Machinery and transport equipment	1776.9	1982.4	11.6	2256.4	2714.5	20.3	-479.5	-732.1
Miscellaneous manufactured articles	917.1	941.1	2.6	673.1	730.8	8.6	244.0	210.3
Commodities and transactions n.e.c.	31.6	66.1	109.2	35.1	15.8	-55.0	-3.5	50.3

¹ Data are preliminary as of 11.02.2013.