

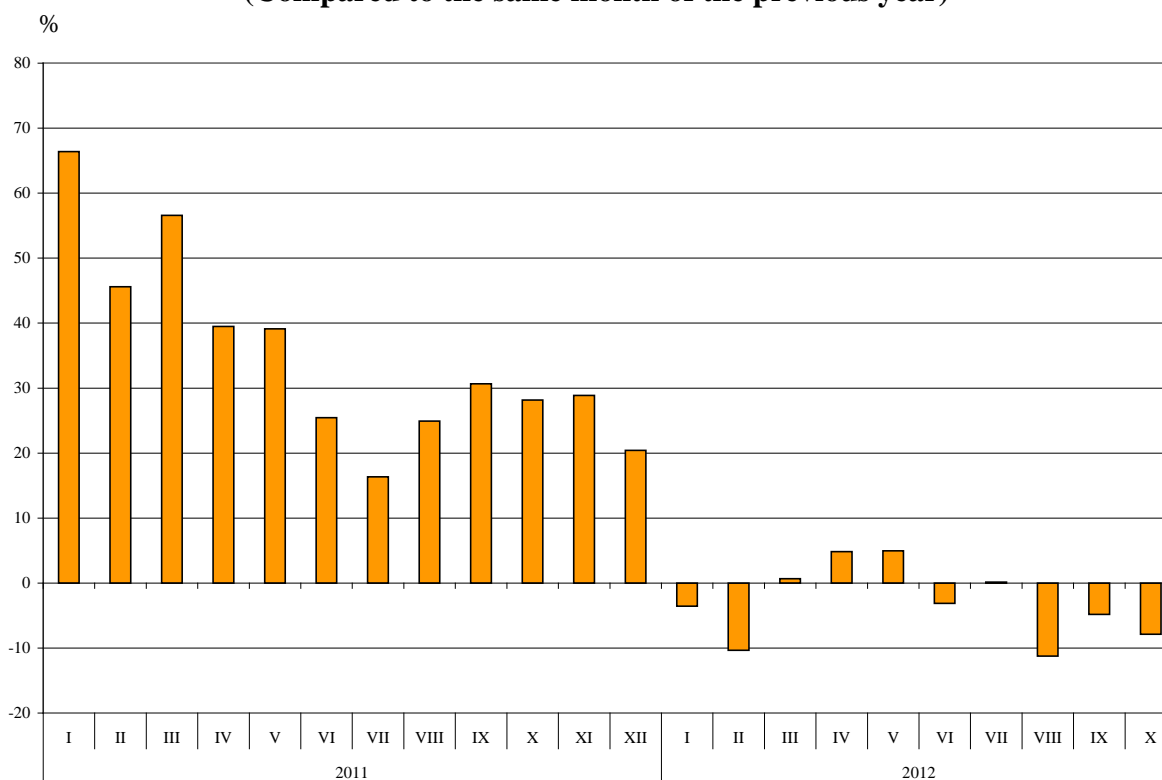


BULGARIAN TRADE WITH EU FOR THE PERIOD JANUARY - OCTOBER 2012 (PRELIMINARY DATA)

In the period **January - October 2012** the Bulgarian **exports to the EU** decreased by 3.1% compared to the corresponding period of the previous year and amounted to 19.9 Billion Levs (Annex, Table 1 and 2). The main trade partners of Bulgaria were Germany, Italy, Romania, Greece, France and Belgium that formed 70.8% of the exports to the EU Member States (Annex, Table 3).

In October 2012 the exports to the EU decreased by 7.9% compared to the corresponding month of the previous year and amounted to 2.1 Billion Levs.

**Figure 1. Nominal value¹ change of exports to EU for the period 2011 – 2012
(Compared to the same month of the previous year)**



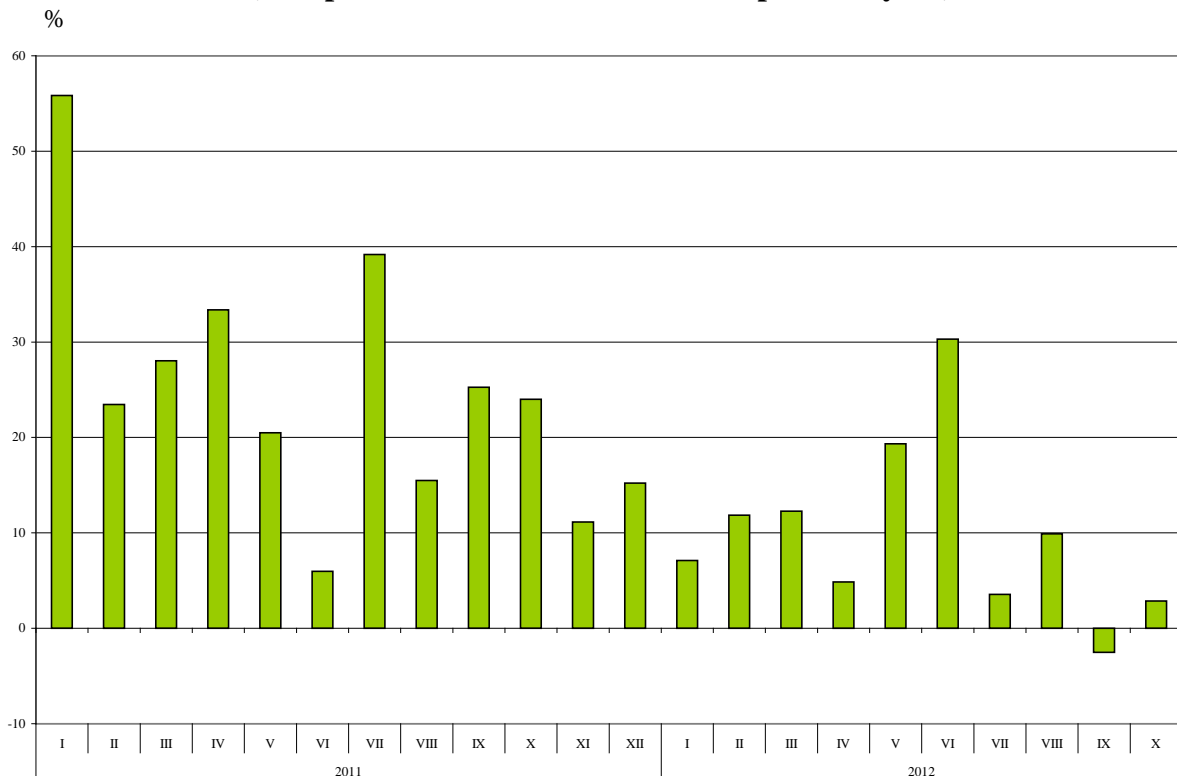
Bulgarian **imports from the EU** in the period January - October 2012 increased by 9.5% compared to the corresponding period of the previous year and added up to 24.3 Billion Levs at CIF prices (Annex, Tables 1 and 2). The largest amounts were reported for the goods imported from Germany, Italy, Romania, Greece and Spain (Annex, Table 3).

¹ Value changes at current prices.



In October 2012 the Bulgarian imports from the EU Member States increased by 2.9% compared to the corresponding month of the previous year and added up to 2.6 Billion Levs at CIF prices.

**Figure 2. Nominal value¹ change of imports from EU for the period 2011 – 2012
(Compared to the same month of the previous year)**



The **foreign trade balance** of Bulgaria (export FOB - import CIF) **with EU** in the period January – October 2012 was negative and added up to 4 404.7 Million Levs (Annex, Table 1). At FOB/FOB prices (after elimination of transport and insurance costs on imports) the trade balance was also negative and amounted to 3 452.1 Million Levs.

In the **first ten months of 2012** compared to the corresponding period of the previous year the largest growth (31.3%) **in the exports** of Bulgaria **to EU** distributed according to the Standard International Trade Classification (Annex, Table 4) was recorded in the section “Mineral fuels, lubricants and related materials” and the most notable fall (29.6%) - in section “Crude materials, inedible (except fuels)”².

In **imports from EU** the largest increase (46.3%) was reported in section “Mineral fuels, lubricants and related materials” while a decrease (9.7%) was observed in section “Crude materials, inedible (except fuels)”.

¹ Value changes at current prices.

² The section includes following divisions: raw hides, skins and furskins; oil-seeds and oleaginous fruits; crude rubber; cork and wood; pulp and waste paper; textile fibres and their wastes; crude fertilizers and crude minerals; metalliferous ores and metal scrap; crude animal and vegetable materials, n.e.s.

Annex

Exports, imports and trade balance of Bulgaria for the period January - October 2011 and 2012¹ by months

Table 1

(Million Levs)

Months/Periods	Exports - FOB			Imports - CIF			Imports - FOB ²			Trade balance - FOB/CIF			Trade balance - FOB/FOB ²		
	Total	EU	Non EU	Total	EU	Non EU	Total	EU	Non EU	Total	EU	Non EU	Total	EU	Non EU
I.2011	3054.5	1789.0	1265.5	3353.1	1987.0	1366.1	3211.1	1907.9	1303.2	-298.6	-198.0	-100.6	-156.6	-118.9	-37.7
II.2011	2935.1	1840.9	1094.2	3168.3	1898.6	1269.7	3041.6	1827.9	1213.7	-233.2	-57.7	-175.5	-106.5	13.0	-119.5
III.2011	3320.2	2027.1	1293.1	3772.8	2284.2	1488.6	3613.6	2193.5	1420.1	-452.6	-257.1	-195.5	-293.4	-166.4	-127.0
I - III.2011	9309.8	5657.0	3652.8	10294.2	6169.8	4124.4	9866.3	5929.3	3937.0	-984.4	-512.8	-471.6	-556.5	-272.3	-284.2
IV.2011	3144.3	1850.8	1293.5	3815.2	2226.2	1589.0	3652.4	2137.7	1514.7	-670.9	-375.4	-295.5	-508.1	-286.9	-221.2
V.2011	3283.6	2041.0	1242.6	3817.6	2238.1	1579.5	3659.2	2153.0	1506.2	-534.0	-197.1	-336.9	-375.6	-112.0	-263.6
VI.2011	3256.6	2067.1	1189.5	3749.3	2035.1	1714.2	3591.2	1958.4	1632.8	-492.7	32.0	-524.7	-334.6	108.7	-443.3
IV - VI.2011	9684.5	5958.9	3725.6	11382.1	6499.4	4882.7	10902.8	6249.1	4653.7	-1697.6	-540.5	-1157.1	-1218.3	-290.2	-928.1
I - VI.2011	18994.3	11615.9	7378.4	21676.3	12669.2	9007.1	20769.1	12178.4	8590.7	-2682.0	-1053.3	-1628.7	-1774.8	-562.5	-1212.3
VII.2011	3618.8	2235.9	1382.9	4067.4	2551.8	1515.6	3893.6	2449.2	1444.4	-448.6	-315.9	-132.7	-274.8	-213.3	-61.5
VIII.2011	3435.1	2216.1	1219.0	3500.4	2023.3	1477.1	3357.6	1945.3	1412.3	-65.3	192.8	-258.1	77.5	270.8	-193.3
IX.2011	3485.3	2199.8	1285.5	4172.6	2404.3	1768.3	3988.7	2307.3	1681.4	-687.3	-204.5	-482.8	-503.4	-107.5	-395.9
VII - IX.2011	10539.2	6651.8	3887.4	11740.4	6979.4	4761.0	11239.9	6701.8	4538.1	-1201.2	-327.6	-873.6	-700.7	-50.0	-650.7
I - IX.2011	29533.5	18267.7	11265.8	33416.7	19648.6	13768.1	32009.0	18880.2	13128.8	-3883.2	-1380.9	-2502.3	-2475.5	-612.5	-1863.0
X.2011	3531.7	2277.9	1253.8	4162.9	2548.3	1614.6	3989.8	2449.4	1540.4	-631.2	-270.4	-360.8	-458.1	-171.5	-286.6
I - X.2011	33065.2	20545.6	12519.6	37579.6	22196.9	15382.7	35998.8	21329.6	14669.2	-4514.4	-1651.3	-2863.1	-2933.6	-784.0	-2149.6
I.2012	2813.9	1725.6	1088.3	3500.4	2128.1	1372.3	3355.5	2042.3	1313.2	-686.5	-402.5	-284.0	-541.6	-316.7	-224.9
II.2012	2863.1	1650.5	1212.6	3605.6	2123.5	1482.1	3456.8	2041.8	1415.0	-742.5	-473.0	-269.5	-593.7	-391.3	-202.4
III.2012	3363.2	2040.7	1322.5	4239.1	2564.8	1674.3	4065.2	2464.4	1600.8	-875.9	-524.1	-351.8	-702.0	-423.7	-278.3
I - III.2012	9040.2	5416.8	3623.4	11345.1	6816.4	4528.7	10877.5	6548.5	4329.0	-2304.9	-1399.6	-905.3	-1837.3	-1131.7	-705.6
IV.2012	3170.2	1940.1	1230.1	4279.6	2334.3	1945.3	4098.5	2245.3	1853.2	-1109.4	-394.2	-715.2	-928.3	-305.2	-623.1
V.2012	3653.2	2142.5	1510.7	4649.5	2670.9	1978.6	4452.8	2565.0	1887.8	-996.3	-528.4	-467.9	-799.6	-422.5	-377.1
VI.2012	3455.7	2002.3	1453.4	4389.8	2651.8	1738.0	4204.3	2543.3	1661.0	-934.1	-649.5	-284.6	-748.6	-541.0	-207.6
IV - VI.2012	10279.1	6084.9	4194.2	13318.9	7657.0	5661.9	12755.6	7353.6	5402.0	-3039.8	-1572.1	-1467.7	-2476.5	-1268.7	-1207.8
I - VI.2012	19319.3	11501.7	7817.6	24664.0	14473.4	10190.6	23633.1	13902.1	9731.0	-5344.7	-2971.7	-2373.0	-4313.8	-2400.4	-1913.4
VII.2012	3648.7	2239.3	1409.4	4330.0	2642.3	1687.7	4149.7	2536.3	1613.4	-681.3	-403.0	-278.3	-501.0	-297.0	-204.0
VIII.2012	3655.4	1966.8	1688.6	4099.8	2223.7	1876.1	3924.1	2139.1	1785.0	-444.4	-256.9	-187.5	-268.7	-172.3	-96.4
IX.2012	3551.4	2093.5	1457.9	4024.8	2343.9	1680.9	3852.4	2254.8	1597.6	-473.4	-250.4	-223.0	-301.0	-161.3	-139.7
VII - IX.2012	10855.5	6299.6	4555.9	12454.6	7209.9	5244.7	11926.2	6930.2	4996.0	-1599.1	-910.3	-688.8	-1070.7	-630.6	-440.1
I - IX.2012	30174.8	17801.3	12373.5	37118.6	21683.3	15435.3	35559.3	20832.3	14727.0	-6943.8	-3882.0	-3061.8	-5384.5	-3031.0	-2353.5
X.2012	3636.6	2098.5	1538.1	4531.6	2621.2	1910.4	4338.4	2519.6	1818.8	-895.0	-522.7	-372.3	-701.8	-421.1	-280.7
I - X.2012	33811.4	19899.8	13911.6	41650.2	24304.5	17345.7	39897.7	23351.9	16545.8	-7838.8	-4404.7	-3434.1	-6086.3	-3452.1	-2634.2

¹ Data are preliminary as of 09.01.2013.

² By data of BNB for the transport costs.



Table 2

Value changes of exports and imports of Bulgaria for the period January - October 2012¹ compared to the same period of the previous year

(Per cent)

Months/Periods	Exports - FOB			Imports - CIF			Imports - FOB		
	Total	EU	Non EU	Total	EU	Non EU	Total	EU	Non EU
I	-7.9	-3.5	-14.0	4.4	7.1	0.5	4.5	7.0	0.8
II	-2.5	-10.3	10.8	13.8	11.8	16.7	13.7	11.7	16.6
III	1.3	0.7	2.3	12.4	12.3	12.5	12.5	12.4	12.7
I - III	-2.9	-4.2	-0.8	10.2	10.5	9.8	10.2	10.4	10.0
IV	0.8	4.8	-4.9	12.2	4.9	22.4	12.2	5.0	22.3
V	11.3	5.0	21.6	21.8	19.3	25.3	21.7	19.1	25.3
VI	6.1	-3.1	22.2	17.1	30.3	1.4	17.1	29.9	1.7
IV - VI	6.1	2.1	12.6	17.0	17.8	16.0	17.0	17.7	16.1
I - VI	1.7	-1.0	6.0	13.8	14.2	13.1	13.8	14.2	13.3
VII	0.8	0.2	1.9	6.5	3.5	11.4	6.6	3.6	11.7
VIII	6.4	-11.2	38.5	17.1	9.9	27.0	16.9	10.0	26.4
IX	1.9	-4.8	13.4	-3.5	-2.5	-4.9	-3.4	-2.3	-5.0
VII - IX	3.0	-5.3	17.2	6.1	3.3	10.2	6.1	3.4	10.1
I - IX	2.2	-2.6	9.8	11.1	10.4	12.1	11.1	10.3	12.2
X	3.0	-7.9	22.7	8.9	2.9	18.3	8.7	2.9	18.1
I - X	2.3	-3.1	11.1	10.8	9.5	12.8	10.8	9.5	12.8

¹Data are preliminary as of 09.01.2013.



Table 3

Exports, imports and trade balance of Bulgaria by groups of countries and main trade partners¹ for the period January - October 2011 and 2012²

Countries and groups of countries	Exports - FOB			Imports - CIF			Trade balance - FOB/CIF	
	2011	2012	Change compared to the same period of the previous year - %	2011	2012	Change compared to the same period of the previous year - %	2011	2012
	Million Levs			Million Levs			Million Levs	
Total	33065.2	33811.4	2.3	37579.6	41650.2	10.8	-4514.4	-7838.8
EU	20545.6	19899.8	-3.1	22196.9	24304.5	9.5	-1651.3	-4404.7
Austria	640.6	636.0	-0.7	1240.2	1279.1	3.1	-599.6	-643.1
Belgium	1699.1	1184.2	-30.3	647.3	723.5	11.8	1051.8	460.7
Cyprus	97.7	134.2	37.4	106.8	141.7	32.7	-9.1	-7.5
Czech Republic	351.7	417.0	18.6	623.0	778.4	24.9	-271.3	-361.4
Denmark	238.7	155.5	-34.9	142.1	147.9	4.1	96.6	7.6
Estonia	19.7	18.7	-5.1	8.7	9.3	6.9	11.0	9.4
Finland	57.5	60.4	5.0	91.8	103.6	12.9	-34.3	-43.2
France	1403.5	1359.2	-3.2	1209.9	1196.4	-1.1	193.6	162.8
Germany	3882.1	3466.0	-10.7	4036.9	4628.3	14.6	-154.8	-1162.3
Greece	2246.6	2443.6	8.8	2146.7	2465.4	14.8	99.9	-21.8
Hungary	431.1	393.2	-8.8	1138.5	1229.4	8.0	-707.4	-836.2
Ireland	22.6	52.8	133.6	123.3	134.6	9.2	-100.7	-81.8
Italy	2883.8	2856.6	-0.9	2668.2	2762.7	3.5	215.6	93.9
Latvia	35.2	42.9	21.9	22.4	29.3	30.8	12.8	13.6
Lithuania	41.3	55.4	34.1	64.5	75.6	17.2	-23.2	-20.2
Luxembourg	34.4	5.9	-82.8	23.4	33.1	41.5	11.0	-27.2
Malta	58.9	16.5	-72.0	23.9	88.2	269.0	35.0	-71.7
Netherlands	576.0	606.5	5.3	906.3	1259.6	39.0	-330.3	-653.1
Poland	599.9	592.5	-1.2	703.8	884.7	25.7	-103.9	-292.2
Portugal	132.8	302.6	127.9	89.0	127.9	43.7	43.8	174.7
Romania	3034.3	2783.0	-8.3	2610.5	2740.1	5.0	423.8	42.9
Slovakia	182.5	204.0	11.8	445.1	529.9	19.1	-262.6	-325.9
Slovenia	160.6	301.5	87.7	281.4	259.2	-7.9	-120.8	42.3
Spain	873.0	954.3	9.3	2006.5	1827.8	-8.9	-1133.5	-873.5
Sweden	175.5	153.7	-12.4	230.9	224.5	-2.8	-55.4	-70.8
United Kingdom	611.2	654.9	7.1	576.0	592.5	2.9	35.2	62.4
Not specified	55.3	48.7	-11.9	29.8	31.8	6.7	25.5	16.9

¹ Partner country:

- In case of exports (or dispatches) is the country (or Member State) of final destination of the goods
- In case of imports (or arrivals) is the country (or Member State) of consignment of the goods.

² Data are preliminary as of 09.01.2013.



Table 3

Exports, imports and trade balance of Bulgaria by groups of countries and main trade partners¹ for the period January - October 2011² and 2012²

(Continued)

Countries and groups of countries	Exports - FOB			Imports - CIF			Trade balance - FOB/CIF	
	2011	2012	Change compared to the same period of the previous year - %	2011	2012	Change compared to the same period of the previous year - %	2011	2012
	Million Levs			Million Levs			Million Levs	
Non EU countries	12519.6	13911.6	11.1	15382.7	17345.7	12.8	-2863.1	-3434.1
CIS	1958.8	2158.4	10.2	8698.3	10219.5	17.5	-6739.5	-8061.1
of which:								
Georgia	364.7	460.3	26.2	325.1	273.7	-15.8	39.6	186.6
Kazakhstan	34.3	52.1	51.9	121.9	63.4	-48.0	-87.6	-11.3
Russian Fed.	871.7	936.3	7.4	6647.2	8673.3	30.5	-5775.5	-7737.0
Ukraine	465.9	415.3	-10.9	1479.9	1066.1	-28.0	-1014.0	-650.8
OECD³	4000.3	4634.3	15.8	2811.9	2949.4	4.9	1188.4	1684.9
of which:								
Canada	114.9	184.6	60.7	56.4	64.3	14.0	58.5	120.3
Japan	38.9	41.2	5.9	108.4	107.6	-0.7	-69.5	-66.4
Korea, Rep. of	163.5	203.1	24.2	181.0	154.2	-14.8	-17.5	48.9
Turkey	2916.1	3223.2	10.5	1813.0	1924.0	6.1	1103.1	1299.2
USA	432.1	582.1	34.7	320.3	287.5	-10.2	111.8	294.6
EFTA	259.9	319.5	22.9	313.0	352.1	12.5	-53.1	-32.6
of which:								
Norway	50.3	53.5	6.4	16.8	12.9	-23.2	33.5	40.6
Switzerland	200.9	257.9	28.4	293.5	338.6	15.4	-92.6	-80.7

¹ Partner country:

- In case of exports (or dispatches) is the country (or Member State) of final destination of the goods
- In case of imports (or arrivals) is the country (or Member State) of consignment of the goods.

² Data are preliminary as of 09.01.2013.

³ Excluding EU countries.



Table 3

Exports, imports and trade balance of Bulgaria by groups of countries and main trade partners¹ for the period January - October 2011² and 2012²

(Continued and end)

Countries and groups of countries	Exports - FOB			Imports - CIF			Trade balance - FOB/CIF	
	2011	2012	Change compared to the same period of the previous year - %	2011	2012	Change compared to the same period of the previous year - %	2011	2012
	Million Levs			Million Levs			Million Levs	
Countries not included in the upper groups								
Albania	81.2	81.2	0.0	28.2	31.2	10.6	53.0	50.0
Bosnia and Herzegovina	66.6	58.0	-12.9	11.9	27.4	130.3	54.7	30.6
Brazil	51.2	65.5	27.9	168.8	208.9	23.8	-117.6	-143.4
China	439.2	985.4	124.4	1036.5	1290.1	24.5	-597.3	-304.7
Croatia	151.8	116.2	-23.5	48.5	47.2	-2.7	103.3	69.0
Egypt	280.8	227.3	-19.1	129.0	83.2	-35.5	151.8	144.1
FYR of Macedonia	752.7	657.5	-12.6	414.7	422.8	2.0	338.0	234.7
India	116.7	56.4	-51.7	99.4	122.8	23.5	17.3	-66.4
Indonesia	20.3	25.4	25.1	31.6	41.4	31.0	-11.3	-16.0
Iran	103.5	31.4	-69.7	4.7	7.6	61.7	98.8	23.8
Israel	72.2	148.8	106.1	297.3	94.9	-68.1	-225.1	53.9
Peru	3.6	4.3	19.4	106.1	159.5	50.3	-102.5	-155.2
Serbia	801.4	763.9	-4.7	406.2	410.0	0.9	395.2	353.9
Singapore	71.9	90.2	25.5	22.9	23.8	3.9	49.0	66.4
South Africa	126.3	91.2	-27.8	31.5	55.9	77.5	94.8	35.3
Syria	41.1	34.8	-15.3	65.8	63.9	-2.9	-24.7	-29.1
Taiwan	36.8	41.0	11.4	94.1	107.9	14.7	-57.3	-66.9
United Arab Emirates	55.1	187.9	241.0	66.0	97.6	47.9	-10.9	90.3
Viet Nam	18.2	20.0	9.9	27.9	55.2	97.8	-9.7	-35.2

¹ Partner country:

- In case of exports (or dispatches) is the country (or Member State) of final destination of the goods

- In case of imports (or arrivals) is the country (or Member State) of consignment of the goods.

² Data are preliminary as of 09.01.2013.



Table 4

Exports, imports and trade balance of Bulgaria by sections of SITC, rev.4
for the period January - October 2011 and 2012¹

Sections by SITC	Exports - FOB			Imports - CIF			Trade balance - FOB/CIF	
	2011	2012	Change compared to the same period of the previous year - %	2011	2012	Change compared to the same period of the previous year - %	2011	2012
	Million Levs			Million Levs			Million Levs	
Total	33065.2	33811.4	2.3	37579.6	41650.2	10.8	-4514.4	-7838.8
of which EU	20545.6	19899.8	-3.1	22196.9	24304.5	9.5	-1651.3	-4404.7
Food and live animals	3127.7	3450.6	10.3	2835.5	2892.3	2.0	292.2	558.3
of which EU	2420.9	2690.9	11.2	2306.4	2510.5	8.8	114.5	180.4
Beverages and tobacco	628.8	706.2	12.3	450.2	525.9	16.8	178.6	180.3
of which EU	265.9	243.8	-8.3	324.8	385.9	18.8	-58.9	-142.1
Crude materials, inedible (except fuel)	3351.3	3047.0	-9.1	3834.7	3685.5	-3.9	-483.4	-638.5
of which EU	2030.8	1429.6	-29.6	2459.3	2221.6	-9.7	-428.5	-792.0
Mineral fuel, lubricants and related materials	4585.5	5533.3	20.7	8646.0	10344.7	19.6	-4060.5	-4811.4
of which EU	996.2	1308.0	31.3	1047.0	1531.3	46.3	-50.8	-223.3
Animals and vegetable oils, fats and waxes	233.4	251.8	7.9	179.8	200.6	11.6	53.6	51.2
of which EU	177.9	189.9	6.7	142.7	147.5	3.4	35.2	42.4
Chemical and related products n.e.c.	2642.3	2832.0	7.2	4345.0	4817.4	10.9	-1702.7	-1985.4
of which EU	1220.5	1334.5	9.3	3384.7	3691.9	9.1	-2164.2	-2357.4
Manufactured goods classified chiefly by material	8309.5	7704.2	-7.3	6376.0	6524.7	2.3	1933.5	1179.5
of which EU	5509.3	4773.2	-13.4	3999.1	4140.0	3.5	1510.2	633.2
Machinery and transport equipment	5463.0	5571.1	2.0	8382.4	10056.5	20.0	-2919.4	-4485.4
of which EU	3993.0	4038.0	1.1	6583.5	7697.1	16.9	-2590.5	-3659.1
Miscellaneous manufactured articles	4682.4	4640.1	-0.9	2426.7	2505.4	3.2	2255.7	2134.7
of which EU	3915.0	3872.0	-1.1	1873.0	1894.7	1.2	2042.0	1977.3
Commodities and transactions n.e.c.	41.3	75.1	81.8	103.3	97.2	-5.9	-62.0	-22.1
of which EU	16.1	19.9	23.6	76.4	84.0	9.9	-60.3	-64.1

¹ Data are preliminary as of 09.01.2013.