

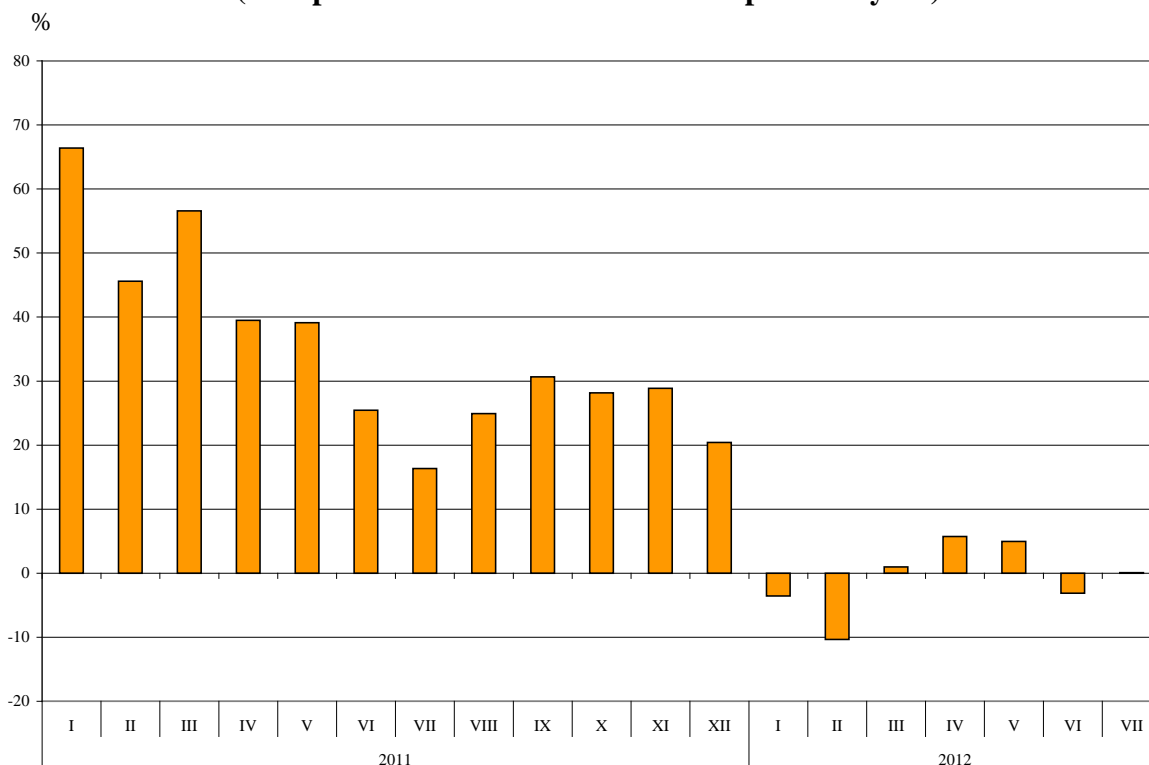


BULGARIAN TRADE WITH EU FOR THE PERIOD JANUARY - JULY 2012 (PRELIMINARY DATA)

In the period **January - July 2012** the Bulgarian **exports to the EU** decreased by 0.6% compared to the corresponding period of the previous year and amounted to 13.8 Billion Levs (Annex, Table 1 and 2). The main trade partners of Bulgaria were Germany, Italy, Romania, Greece, France and Belgium that formed 71.4% of the exports to the EU Member States (Annex, Table 3).

In July 2012 the exports to the EU increased by 0.1% compared to the corresponding month of the previous year and amounted to 2.2 Billion Levs.

**Figure 1. Nominal value¹ change of exports to EU for the period 2011 – 2012
(Compared to the same month of the previous year)**

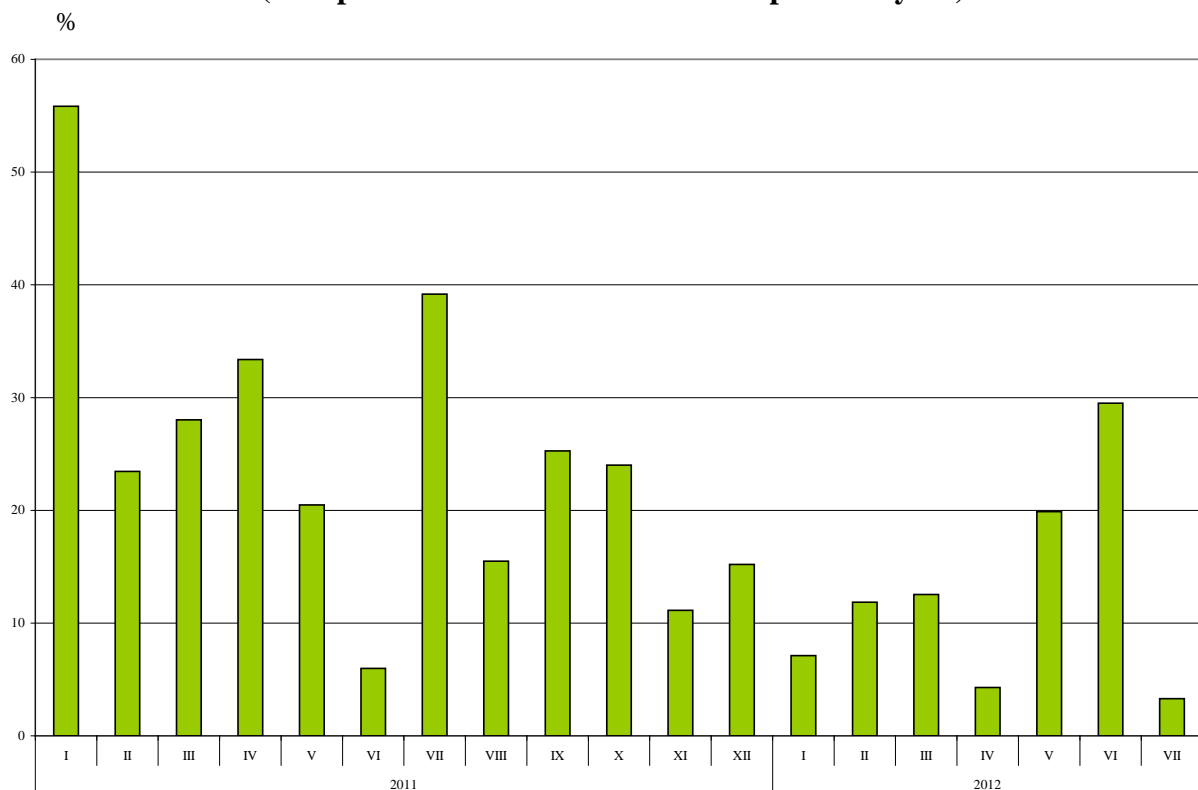


Bulgarian **imports from the EU** in the period January - July 2012 increased by 12.3% compared to the corresponding period of the previous year and added up to 17.1 Billion Levs at CIF prices (Annex, Tables 1 and 2). The largest amounts were reported for the goods imported from Germany, Italy, Romania, Greece and Spain (Annex, Table 3).

¹ Value changes at current prices.

In July 2012 the Bulgarian imports from the EU Member States grew by 3.3% compared to the corresponding month of the previous year and added up to 2.6 Billion Levs at CIF prices.

**Figure 2. Nominal value¹ change of imports from EU for the period 2011 – 2012
(Compared to the same month of the previous year)**



The **foreign trade balance** of Bulgaria (export FOB - import CIF) **with EU** in the period January – July 2012 was negative and added up to 3 336.1 Million Levs (Annex, Table 1). At FOB/FOB prices (after elimination of transport and insurance costs on imports) the trade balance was also negative and amounted to 2 659.1 Million Levs.

In the **first seven months of 2012** compared to the corresponding period of the previous year the largest growth (40.6%) **in the exports of Bulgaria to EU** distributed according to the Standard International Trade Classification (Annex, Table 4) was recorded in the section “Mineral fuels, lubricants and related materials” and the most notable fall (30.8%) - in section “Crude materials, inedible (except fuels)”².

In **imports from EU** the largest increase (52.9%) was reported in section “Mineral fuels, lubricants and related materials” while a decrease was observed only in section “Animal and vegetable oils, fats and waxes” – (4.1%).

¹ Value changes at current prices.

² The section includes following divisions: raw hides, skins and furskins; oil-seeds and oleaginous fruits; crude rubber; cork and wood; pulp and waste paper; textile fibres and their wastes; crude fertilizers and crude minerals; metalliferous ores and metal scrap; crude animal and vegetable materials, n.e.s.

Annex

Exports, imports and trade balance for the period January - July 2011 and 2012¹ by months

Table 1

(Million Levs)

Months/Periods	Exports - FOB			Imports - CIF			Imports - FOB ²			Trade balance - FOB/CIF			Trade balance - FOB/FOB ²		
	Total	EU	Non EU	Total	EU	Non EU	Total	EU	Non EU	Total	EU	Non EU	Total	EU	Non EU
I.2011	3054.5	1789.0	1265.5	3353.1	1987.0	1366.1	3211.1	1907.9	1303.2	-298.6	-198.0	-100.6	-156.6	-118.9	-37.7
II.2011	2935.1	1840.9	1094.2	3168.3	1898.6	1269.7	3041.6	1827.9	1213.7	-233.2	-57.7	-175.5	-106.5	13.0	-119.5
III.2011	3320.2	2027.1	1293.1	3772.8	2284.2	1488.6	3613.6	2193.5	1420.1	-452.6	-257.1	-195.5	-293.4	-166.4	-127.0
I - III.2011	9309.8	5657.0	3652.8	10294.2	6169.8	4124.4	9866.3	5929.3	3937.0	-984.4	-512.8	-471.6	-556.5	-272.3	-284.2
IV.2011	3144.3	1850.8	1293.5	3815.2	2226.2	1589.0	3652.4	2137.7	1514.7	-670.9	-375.4	-295.5	-508.1	-286.9	-221.2
V.2011	3283.6	2041.0	1242.6	3817.6	2238.1	1579.5	3659.2	2153.0	1506.2	-534.0	-197.1	-336.9	-375.6	-112.0	-263.6
VI.2011	3256.6	2067.1	1189.5	3749.3	2035.1	1714.2	3591.2	1958.4	1632.8	-492.7	32.0	-524.7	-334.6	108.7	-443.3
IV - VI.2011	9684.5	5958.9	3725.6	11382.1	6499.4	4882.7	10902.8	6249.1	4653.7	-1697.6	-540.5	-1157.1	-1218.3	-290.2	-928.1
I - VI.2011	18994.3	11615.9	7378.4	21676.3	12669.2	9007.1	20769.1	12178.4	8590.7	-2682.0	-1053.3	-1628.7	-1774.8	-562.5	-1212.3
VII.2011	3618.8	2235.9	1382.9	4067.4	2551.8	1515.6	3893.6	2449.2	1444.4	-448.6	-315.9	-132.7	-274.8	-213.3	-61.5
I - VII.2011	22613.1	13851.8	8761.3	25743.7	15221.0	10522.7	24662.7	14627.6	10035.1	-3130.6	-1369.2	-1761.4	-2049.6	-775.8	-1273.8
I.2012	2813.5	1725.2	1088.3	3500.8	2128.5	1372.3	3355.9	2042.7	1313.2	-687.3	-403.3	-284.0	-542.4	-317.5	-224.9
II.2012	2863.2	1650.6	1212.6	3605.8	2123.7	1482.1	3457.0	2042.0	1415.0	-742.6	-473.1	-269.5	-593.8	-391.4	-202.4
III.2012	3369.4	2046.9	1322.5	4244.7	2570.4	1674.3	4070.5	2469.7	1600.8	-875.3	-523.5	-351.8	-701.1	-422.8	-278.3
I - III.2012	9046.1	5422.7	3623.4	11351.3	6822.6	4528.7	10883.4	6554.4	4329.0	-2305.2	-1399.9	-905.3	-1837.3	-1131.7	-705.6
IV.2012	3187.2	1957.1	1230.1	4267.1	2321.8	1945.3	4086.5	2233.3	1853.2	-1079.9	-364.7	-715.2	-899.3	-276.2	-623.1
V.2012	3653.2	2142.5	1510.7	4661.7	2683.1	1978.6	4464.2	2576.4	1887.8	-1008.5	-540.6	-467.9	-811.0	-433.9	-377.1
VI.2012	3456.0	2002.6	1453.4	4373.5	2635.5	1738.0	4188.7	2527.7	1661.0	-917.5	-632.9	-284.6	-732.7	-525.1	-207.6
IV - VI.2012	10296.4	6102.2	4194.2	13302.3	7640.4	5661.9	12739.4	7337.4	5402.0	-3005.9	-1538.2	-1467.7	-2443.0	-1235.2	-1207.8
I - VI.2012	19342.5	11524.9	7817.6	24653.6	14463.0	10190.6	23622.8	13891.8	9731.0	-5311.1	-2938.1	-2373.0	-4280.3	-2366.9	-1913.4
VII.2012	3647.5	2238.1	1409.4	4323.8	2636.1	1687.7	4143.7	2530.3	1613.4	-676.3	-398.0	-278.3	-496.2	-292.2	-204.0
I - VII.2012	22990.0	13763.0	9227.0	28977.4	17099.1	11878.3	27766.5	16422.1	11344.4	-5987.4	-3336.1	-2651.3	-4776.5	-2659.1	-2117.4

¹ Data are preliminary as of 09.10.2012.

² By data of BNB for the transport costs.



Table 2

Value changes of exports and imports for the period January - July 2012¹ compared to the same period of the previous year

(Per cent)

Months/Periods	Exports - FOB			Imports - CIF			Imports - FOB		
	Total	EU	Non EU	Total	EU	Non EU	Total	EU	Non EU
I	-7.9	-3.6	-14.0	4.4	7.1	0.5	4.5	7.1	0.8
II	-2.4	-10.3	10.8	13.8	11.9	16.7	13.7	11.7	16.6
III	1.5	1.0	2.3	12.5	12.5	12.5	12.6	12.6	12.7
I - III	-2.8	-4.1	-0.8	10.3	10.6	9.8	10.3	10.5	10.0
IV	1.4	5.7	-4.9	11.8	4.3	22.4	11.9	4.5	22.3
V	11.3	5.0	21.6	22.1	19.9	25.3	22.0	19.7	25.3
VI	6.1	-3.1	22.2	16.6	29.5	1.4	16.6	29.1	1.7
IV - VI	6.3	2.4	12.6	16.9	17.6	16.0	16.8	17.4	16.1
I - VI	1.8	-0.8	6.0	13.7	14.2	13.1	13.7	14.1	13.3
VII	0.8	0.1	1.9	6.3	3.3	11.4	6.4	3.3	11.7
I - VII	1.7	-0.6	5.3	12.6	12.3	12.9	12.6	12.3	13.0

¹ Data are preliminary as of 09.10.2012.



Table 3

Exports, imports and trade balance by groups of countries and main trade partners¹ for the period January - July 2011 and 2012²

Countries and groups of countries	Exports - FOB			Imports - CIF			Trade balance - FOB/CIF	
	2011	2012	Change compared to the same period of the previous year - %	2011	2012	Change compared to the same period of the previous year - %	2011	2012
	Million Levs			Million Levs			Million Levs	
Total	22613.1	22990.0	1.7	25743.7	28977.4	12.6	-3130.6	-5987.4
EU	13851.8	13763.0	-0.6	15221.0	17099.1	12.3	-1369.2	-3336.1
Austria	445.6	418.4	-6.1	816.2	883.7	8.3	-370.6	-465.3
Belgium	1306.0	887.9	-32.0	455.7	501.5	10.1	850.3	386.4
Cyprus	59.7	102.4	71.5	53.1	122.3	130.3	6.6	-19.9
Czech Republic	231.4	266.3	15.1	406.8	528.0	29.8	-175.4	-261.7
Denmark	115.5	102.1	-11.6	98.6	105.7	7.2	16.9	-3.6
Estonia	14.9	12.4	-16.8	4.5	6.4	42.2	10.4	6.0
Finland	35.1	35.3	0.6	63.1	76.1	20.6	-28.0	-40.8
France	957.9	961.5	0.4	804.6	845.9	5.1	153.3	115.6
Germany	2531.4	2407.2	-4.9	2793.9	3277.8	17.3	-262.5	-870.6
Greece	1512.7	1721.5	13.8	1520.7	1630.7	7.2	-8.0	90.8
Hungary	309.6	277.6	-10.3	778.6	820.2	5.3	-469.0	-542.6
Ireland	16.1	22.6	40.4	85.0	94.3	10.9	-68.9	-71.7
Italy	2025.4	2042.0	0.8	1847.5	1906.8	3.2	177.9	135.2
Latvia	22.9	29.5	28.8	19.3	22.7	17.6	3.6	6.8
Lithuania	28.7	32.7	13.9	38.7	48.6	25.6	-10.0	-15.9
Luxembourg	25.1	3.9	-84.5	16.1	22.0	36.6	9.0	-18.1
Malta	54.8	9.4	-82.8	18.1	84.2	365.2	36.7	-74.8
Netherlands	377.2	402.7	6.8	629.6	940.4	49.4	-252.4	-537.7
Poland	435.3	391.0	-10.2	455.4	568.0	24.7	-20.1	-177.0
Portugal	78.1	182.0	133.0	60.4	94.1	55.8	17.7	87.9
Romania	1995.3	1801.0	-9.7	1794.9	1906.3	6.2	200.4	-105.3
Slovakia	120.3	140.1	16.5	311.7	366.9	17.7	-191.4	-226.8
Slovenia	130.5	260.5	99.6	203.1	177.5	-12.6	-72.6	83.0
Spain	440.7	645.1	46.4	1408.2	1489.7	5.8	-967.5	-844.6
Sweden	121.3	104.8	-13.6	157.0	151.0	-3.8	-35.7	-46.2
United Kingdom	425.1	463.5	9.0	360.0	403.5	12.1	65.1	60.0
Not specified	35.2	39.6	12.5	20.2	24.8	22.8	15.0	14.8

¹ Partner country:

- In case of exports (or dispatches) is the country (or Member State) of final destination of the goods
- In case of imports (or arrivals) is the country (or Member State) of consignment of the goods.

² Data are preliminary as of 09.10.2012.



Table 3

**Exports, imports and trade balance by groups of countries and main trade partners¹
for the period January - July 2011² and 2012²**

(Continued)

Countries and groups of countries	Exports - FOB			Imports - CIF			Trade balance - FOB/CIF	
	2011	2012	Change compared to the same period of the previous year - %	2011	2012	Change compared to the same period of the previous year - %	2011	2012
	Million Levs			Million Levs			Million Levs	
Non EU countries	8761.3	9227.0	5.3	10522.7	11878.3	12.9	-1761.4	-2651.3
CIS	1215.5	1288.9	6.0	6040.0	6828.6	13.1	-4824.5	-5539.7
of which:								
Georgia	198.7	258.2	29.9	218.9	193.9	-11.4	-20.2	64.3
Kazakhstan	22.7	34.8	53.3	109.3	41.2	-62.3	-86.6	-6.4
Russian Fed.	584.5	597.5	2.2	4583.8	5799.2	26.5	-3999.3	-5201.7
Ukraine	262.8	208.3	-20.7	1056.8	719.1	-32.0	-794.0	-510.8
OECD³	2884.4	3013.9	4.5	1973.1	2082.6	5.5	911.3	931.3
of which:								
Canada	67.1	126.3	88.2	49.7	56.3	13.3	17.4	70.0
Japan	28.0	26.5	-5.4	74.6	78.4	5.1	-46.6	-51.9
Korea, Rep. of	107.9	144.6	34.0	130.3	119.2	-8.5	-22.4	25.4
Turkey	2154.6	2097.2	-2.7	1257.2	1349.3	7.3	897.4	747.9
USA	303.4	356.3	17.4	230.8	207.2	-10.2	72.6	149.1
EFTA	175.1	212.1	21.1	217.6	232.2	6.7	-42.5	-20.1
of which:								
Norway	31.0	37.2	20.0	9.5	8.2	-13.7	21.5	29.0
Switzerland	137.3	167.8	22.2	205.8	223.6	8.6	-68.5	-55.8

¹ Partner country:

- In case of exports (or dispatches) is the country (or Member State) of final destination of the goods
- In case of imports (or arrivals) is the country (or Member State) of consignment of the goods.

² Data are preliminary as of 09.10.2012.

³ Excluding EU countries.



Table 3

**Exports, imports and trade balance by groups of countries and main trade partners¹
for the period January - July 2011² and 2012²**

(Continued and end)

Countries and groups of countries	Exports - FOB			Imports - CIF			Trade balance - FOB/CIF	
	2011	2012	Change compared to the same period of the previous year - %	2011	2012	Change compared to the same period of the previous year - %	2011	2012
	Million Levs			Million Levs			Million Levs	
Countries not included in the upper groups								
Albania	51.7	54.8	6.0	20.6	22.6	9.7	31.1	32.2
Bosnia and Herzegovina	46.6	38.3	-17.8	6.3	16.3	158.7	40.3	22.0
Brazil	42.8	61.0	42.5	85.4	193.6	126.7	-42.6	-132.6
China	326.9	649.5	98.7	699.7	967.4	38.3	-372.8	-317.9
Croatia	130.8	73.7	-43.7	32.1	34.1	6.2	98.7	39.6
Egypt	171.5	144.0	-16.0	29.6	54.2	83.1	141.9	89.8
FYR of Macedonia	516.9	452.6	-12.4	295.0	289.9	-1.7	221.9	162.7
India	100.5	38.6	-61.6	69.6	83.7	20.3	30.9	-45.1
Indonesia	11.4	16.9	48.2	22.8	24.7	8.3	-11.4	-7.8
Iran	66.8	19.0	-71.6	4.1	7.2	75.6	62.7	11.8
Israel	48.8	129.2	164.8	197.2	66.1	-66.5	-148.4	63.1
Peru	2.7	2.7	0.0	37.9	93.6	147.0	-35.2	-90.9
Serbia	562.0	523.7	-6.8	276.3	268.5	-2.8	285.7	255.2
Singapore	69.2	8.2	-88.2	16.7	16.7	0.0	52.5	-8.5
South Africa	120.5	83.3	-30.9	21.4	41.6	94.4	99.1	41.7
Syria	12.0	29.8	148.3	44.0	42.6	-3.2	-32.0	-12.8
Taiwan	27.0	30.1	11.5	63.6	80.0	25.8	-36.6	-49.9
United Arab Emirates	36.0	171.6	376.7	58.9	90.5	53.7	-22.9	81.1
Viet Nam	13.2	14.3	8.3	19.8	36.2	82.8	-6.6	-21.9

¹ Partner country:

- In case of exports (or dispatches) is the country (or Member State) of final destination of the goods
- In case of imports (or arrivals) is the country (or Member State) of consignment of the goods.

² Data are preliminary as of 09.10.2012.



Table 4

Exports, imports and trade balance by sections of SITC, rev.4
for the period January - July 2011 and 2012¹

Sections by SITC	Exports - FOB			Imports - CIF			Trade balance - FOB/CIF	
	2011	2012	Change compared to the same period of the previous year - %	2011	2012	Change compared to the same period of the previous year - %	2011	2012
	Million Levs			Million Levs			Million Levs	
Total	22613.1	22990.0	1.7	25743.7	28977.4	12.6	-3130.6	-5987.4
of which EU	13851.8	13763.0	-0.6	15221.0	17099.1	12.3	-1369.2	-3336.1
Food and live animals	1862.6	2238.5	20.2	1855.3	1993.7	7.5	7.3	244.8
of which EU	1415.9	1695.7	19.8	1515.4	1716.2	13.3	-99.5	-20.5
Beverages and tobacco	409.4	495.3	21.0	291.3	371.1	27.4	118.1	124.2
of which EU	171.5	176.4	2.9	215.8	271.3	25.7	-44.3	-94.9
Crude materials, inedible (except fuel)	2200.4	1981.4	-10.0	2693.0	2839.7	5.4	-492.6	-858.3
of which EU	1260.8	873.1	-30.8	1736.8	1779.5	2.5	-476.0	-906.4
Mineral fuel, lubricants and related materials	3151.7	3475.4	10.3	5883.1	6926.2	17.7	-2731.4	-3450.8
of which EU	627.4	882.0	40.6	673.7	1029.9	52.9	-46.3	-147.9
Animals and vegetable oils, fats and waxes	129.4	169.6	31.1	120.8	125.3	3.7	8.6	44.3
of which EU	94.8	127.8	34.8	93.7	89.9	-4.1	1.1	37.9
Chemical and related products n.e.c.	1812.6	1922.5	6.1	3004.2	3244.3	8.0	-1191.6	-1321.8
of which EU	853.5	882.4	3.4	2350.2	2506.9	6.7	-1496.7	-1624.5
Manufactured goods classified chiefly by material	5944.8	5522.1	-7.1	4435.6	4515.9	1.8	1509.2	1006.2
of which EU	3906.0	3526.0	-9.7	2781.9	2848.3	2.4	1124.1	677.7
Machinery and transport equipment	3795.4	3828.0	0.9	5739.3	7173.4	25.0	-1943.9	-3345.4
of which EU	2768.4	2812.0	1.6	4519.9	5497.8	21.6	-1751.5	-2685.8
Miscellaneous manufactured articles	3282.6	3308.5	0.8	1658.0	1719.9	3.7	1624.6	1588.6
of which EU	2741.1	2772.6	1.1	1282.1	1300.8	1.5	1459.0	1471.8
Commodities and transactions n.e.c.	24.2	48.7	101.2	63.1	67.9	7.6	-38.9	-19.2
of which EU	12.4	15.0	21.0	51.5	58.5	13.6	-39.1	-43.5

¹ Data are preliminary as of 09.10.2012.