

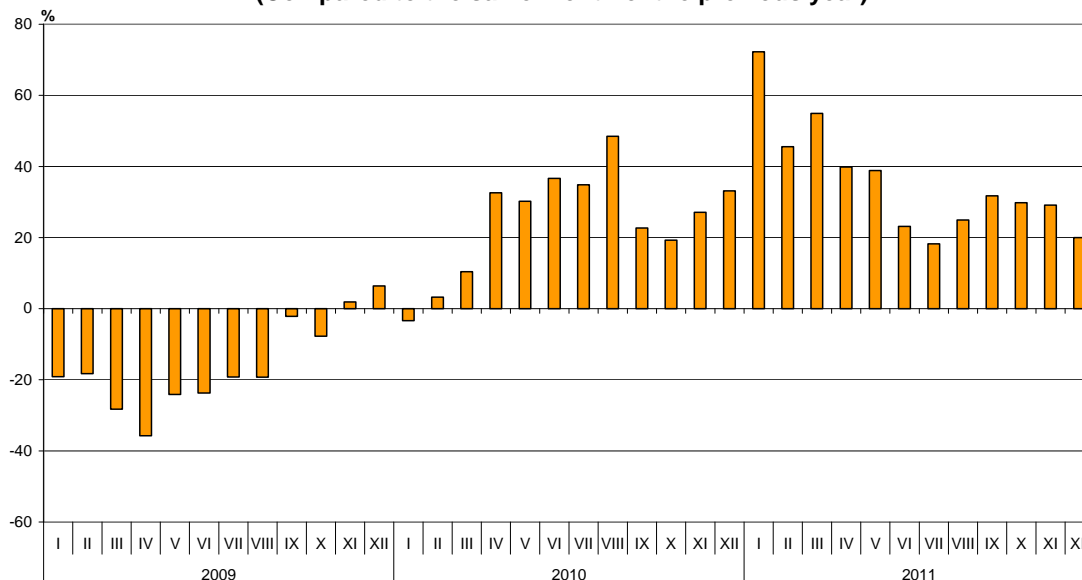


BULGARIAN TRADE WITH EU IN 2011 (PRELIMINARY DATA)

In **2011** the Bulgarian **exports** to the **EU** increased by 33.6% compared to 2010 and amounted to 24.7 billion leva (Table 1.1 and 1.2). The main trade partners of Bulgaria were Germany, Romania, Italy, Greece and Belgium, that formed 67.4 % of the total exports to the EU Member states (Table 2). The most significant growths were observed in the exports to Malta, Denmark and Portugal. Falls were registered in the exports to Slovenia and Luxembourg.

In **December 2011** the exports to the EU increased by 20.0% compared to the corresponding month of the previous year and exceeded 1.8 billion leva.

**Figure 1. Nominal growth of exports to EU for the period
2009 - 2011
(Compared to the same month of the previous year)**

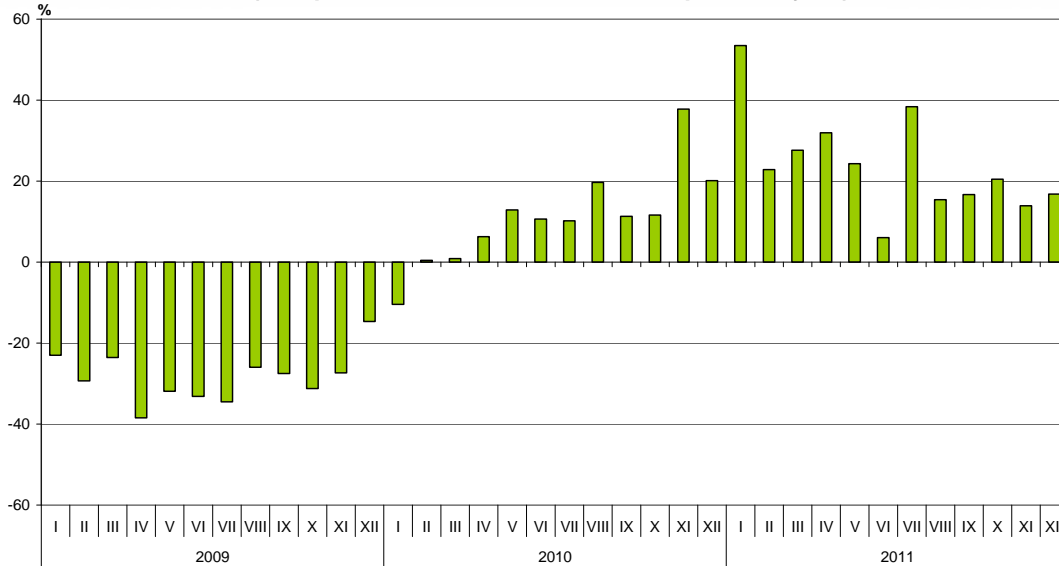


Bulgarian **imports** from the **EU** in **2011** increased by 22.8% compared to 2010 and amounted to 27.0 billion leva at CIF prices (Tables 1.1 and 1.2). The most significant growths were reported on the imports from Spain and Cyprus (Table 2). Decreases were observed in the imports from Malta, Finland, Portugal and Denmark.

In **December 2011** the Bulgarian imports from the EU Member States increased by 16.8% compared to the corresponding month of the previous year and exceeded 2.4 billion leva at CIF prices.



Figure 2. Nominal growth of imports from EU for the period
2009 - 2011
(Compared to the same month of the previous year)



The **foreign trade balance** of Bulgaria (export FOB - import CIF) with **EU** in 2011 was negative and amounted to 2298.0 million leva (Table 1.1). At FOB/FOB prices (after elimination of transport and insurance costs on imports) the trade balance was also negative and reached 1035.4 million leva.

The **exports** of Bulgaria to the **EU** distributed according to the **Standard International Trade Classification**, increased in all sections in 2011 compared to 2010 (Table 3). The largest growths were recorded in the sections “Crude materials, inedible (except fuels)”¹, “Chemical and related products” and “Manufactured goods classified chiefly by material”².

The largest growths **on imports** from EU were reported in sections “Crude materials, inedible (except fuels)”. Falls were reported in section “Mineral fuels, lubricant and related materials”.

¹ The section includes following divisions: raw hides, skins and furskins; oil-seeds and oleaginous fruits; crude rubber; cork and wood; pulp and waste paper; textile fibres and their wastes; crude fertilizers and crude minerals; metalliferous ores and metal scrap; crude animal and vegetable materials, n.e.s.

² The section includes the following divisions: leather, leather manufactures, n.e.s. and dressed furskins; rubber manufactures, n.e.s; cork and wood manufactures (excluding furniture); paper, paperboard and articles of paper pulp, of paper or of paperboard; textile yarn, fabrics, made-up articles, n.e.s., and related products; non-metallic mineral manufactures, n.e.s.; iron and steel; non-ferrous metals; manufactures of metals, n.e.s.



Table 1.2

Growth of exports and imports in 2011¹ compared to the same month of the previous year

(Per cent)

Months	Exports - FOB			Imports - CIF			Imports - FOB		
	Total	EU	Non EU	Total	EU	Non EU	Total	EU	Non EU
I	74.6	72.2	78.1	46.1	53.5	36.6	45.9	53.4	36.1
II	50.4	45.6	59.3	37.1	22.9	65.7	37.2	23.4	64.7
III	50.4	54.9	44.0	26.6	27.7	25.1	26.4	27.3	25.0
I - III	57.7	56.8	59.1	35.7	33.2	39.5	35.5	33.2	39.1
IV	37.1	39.8	33.5	21.3	31.9	9.0	21.0	31.4	8.9
V	37.0	38.9	33.8	21.1	24.3	16.7	21.0	24.2	16.5
VI	12.9	23.1	-2.1	15.0	6.1	27.9	15.0	6.2	27.8
IV - VI	28.1	33.3	20.3	19.1	20.2	17.6	18.9	20.1	17.5
I - VI	41.2	43.9	37.2	26.4	26.2	26.7	26.2	26.1	26.5
VII	22.3	18.2	29.6	23.8	38.4	5.2	23.7	38.1	5.3
VIII	20.9	25.0	14.2	16.3	15.5	17.5	16.3	15.5	17.4
IX	24.8	31.7	14.4	26.2	16.7	40.6	25.8	16.4	40.0
VII - IX	22.6	24.7	19.3	22.2	23.5	20.4	22.0	23.3	20.3
I - IX	33.9	36.2	30.4	24.9	25.2	24.5	24.7	25.1	24.2
X	24.7	29.8	16.3	18.8	20.5	16.4	18.9	20.7	16.2
XI	20.5	29.1	6.7	11.3	13.9	7.4	11.0	13.5	7.4
XII	13.6	20.0	5.4	8.0	16.8	-3.6	7.8	16.4	-3.5
X - XII	19.7	26.6	9.3	12.6	16.9	6.3	12.4	16.7	6.3
I - XII	30.0	33.6	24.4	21.3	22.8	19.2	21.2	22.6	19.0

¹ Data are preliminary as of 12.03.2012.

Exports, imports and trade balance by groups of countries and main trade partners¹
in 2010 and 2011²

Countries and groups of countries	Exports - FOB			Imports - CIF			Trade balance - FOB/CIF	
	2010	2011	Growth - %	2010	2011	Growth - %	2010	2011
	Million Levs			Million Levs			Million Levs	
Total	30435.0	39560.0	30.0	37639.5	45660.9	21.3	-7204.5	-6100.9
EU	18520.1	24737.2	33.6	22015.2	27035.2	22.8	-3495.1	-2298.0
Austria	574.6	762.3	32.7	1307.2	1532.1	17.2	-732.6	-769.8
Belgium	1148.7	2022.3	76.1	712.1	776.5	9.0	436.6	1245.8
Cyprus	89.7	122.7	36.8	54.2	155.8	187.5	35.5	-33.1
Czech Republic	286.4	425.7	48.6	711.5	790.0	11.0	-425.1	-364.3
Denmark	112.5	273.3	142.9	187.3	172.1	-8.1	-74.8	101.2
Estonia	21.4	24.1	12.6	7.3	10.8	47.9	14.1	13.3
Finland	53.5	72.2	35.0	186.0	121.1	-34.9	-132.5	-48.9
France	1229.0	1676.8	36.4	1231.7	1483.3	20.4	-2.7	193.5
Germany	3244.1	4719.4	45.5	4374.5	5016.2	14.7	-1130.4	-296.8
Greece	2419.0	2787.8	15.2	2232.7	2555.3	14.4	186.3	232.5
Hungary	387.4	499.5	28.9	1168.6	1383.6	18.4	-781.2	-884.1
Ireland	16.9	29.0	71.6	105.3	150.6	43.0	-88.4	-121.6
Italy	2955.6	3365.5	13.9	2773.7	3260.6	17.6	181.9	104.9
Latvia	33.1	45.3	36.9	22.7	24.7	8.8	10.4	20.6
Lithuania	45.7	51.7	13.1	56.3	80.4	42.8	-10.6	-28.7
Luxembourg	40.0	35.9	-10.3	25.8	28.2	9.3	14.2	7.7
Malta	12.2	61.1	400.8	50.7	26.5	-47.7	-38.5	34.6
Netherlands	458.6	703.3	53.4	1052.2	1159.4	10.2	-593.6	-456.1
Poland	523.2	706.2	35.0	788.0	873.9	10.9	-264.8	-167.7
Portugal	88.6	162.8	83.7	109.5	95.7	-12.6	-20.9	67.1
Romania	2772.2	3780.1	36.4	2622.4	3152.8	20.2	149.8	627.3
Slovakia	204.6	216.9	6.0	407.5	549.6	34.9	-202.9	-332.7
Slovenia	230.7	174.7	-24.3	296.4	313.2	5.7	-65.7	-138.5
Spain	813.5	1063.6	30.7	709.2	2290.4	223.0	104.3	-1226.8
Sweden	152.7	191.3	25.3	196.8	286.8	45.7	-44.1	-95.5
United Kingdom	592.6	739.6	24.8	593.2	710.6	19.8	-0.6	29.0
Not specified	13.6	24.1	77.2	32.4	35.0	8.0	-18.8	-10.9
Non EU countries	11914.9	14822.8	24.4	15624.3	18625.7	19.2	-3709.4	-3802.9
CIS	1819.7	2347.0	29.0	8125.9	10573.8	30.1	-6306.2	-8226.8
of which:								
Georgia	281.7	448.5	59.2	321.9	381.3	18.5	-40.2	67.2
Kazakhstan	40.6	43.6	7.4	14.1	137.2	873.0	26.5	-93.6
Russian Fed.	863.2	1028.4	19.1	6115.0	8067.2	31.9	-5251.8	-7038.8
Ukraine	387.3	554.3	43.1	1571.6	1833.4	16.7	-1184.3	-1279.1
OECD³	3560.2	4702.9	32.1	3035.1	3401.6	12.1	525.1	1301.3
of which:								
Canada	53.9	168.6	212.8	57.5	61.5	7.0	-3.6	107.1
Japan	31.6	44.8	41.8	136.5	133.9	-1.9	-104.9	-89.1
Korea, Rep. of	183.7	188.5	2.6	146.1	234.2	60.3	37.6	-45.7
Turkey	2576.2	3371.3	30.9	2047.0	2170.3	6.0	529.2	1201.0
USA	414.7	514.2	24.0	260.9	388.6	48.9	153.8	125.6



www.nsi.bg EFTA	246.1	324.3	31.8	365.4	384.8	5.3	-119.3	-60.5
of which:								
Norway	45.5	69.6	53.0	16.4	26.4	61.0	29.1	43.2
Switzerland	193.8	244.4	26.1	340.8	355.0	4.2	-147.0	-110.6
Countries not included								
in the upper groups:								
Albania	114.6	101.0	-11.9	23.5	34.0	44.7	91.1	67.0
Bosnia and Herzegovina	65.1	80.1	23.0	12.5	15.2	21.6	52.6	64.9
Brazil	48.9	56.6	15.7	149.9	188.6	25.8	-101.0	-132.0
China	366.5	571.5	55.9	965.1	1328.1	37.6	-598.6	-756.6
Croatia	160.3	161.7	0.9	69.8	53.3	-23.6	90.5	108.4
Egypt	201.9	330.9	63.9	153.8	149.8	-2.6	48.1	181.1
India	86.2	124.5	44.4	95.4	119.7	25.5	-9.2	4.8
Indonesia	28.1	24.5	-12.8	34.4	36.8	7.0	-6.3	-12.3
Iran	101.7	107.4	5.6	10.4	5.4	-48.1	91.3	102.0
Israel	145.3	108.6	-25.3	184.6	346.0	87.4	-39.3	-237.4
Peru	8.7	4.4	-49.4	450.3	128.5	-71.5	-441.6	-124.1
Serbia	1075.4	928.7	-13.6	394.6	495.7	25.6	680.8	433.0
Singapore	366.1	76.1	-79.2	16.0	29.4	83.8	350.1	46.7
South Africa	15.2	131.6	765.8	22.1	39.7	79.6	-6.9	91.9
Syria	155.0	58.4	-62.3	58.7	72.4	23.3	96.3	-14.0
Taiwan	45.0	41.6	-7.6	113.8	113.5	-0.3	-68.8	-71.9
The former Yugoslav Rep. of Macedonia	650.1	876.6	34.8	501.9	499.0	-0.6	148.2	377.6
United Arab Emirates	64.1	86.4	34.8	43.8	69.4	58.4	20.3	17.0
Viet-Nam	40.5	22.6	-44.2	55.4	37.5	-32.3	-14.9	-14.9

¹ **Partner country:**

- In case of exports (or dispatches) is the country (or Member State) of final destination of the goods
- In case of imports (or arrivals) is the country (or Member State) of consignment of the goods.

² **Data are preliminary as of 12.03.2012.**

³ **Excluding EU countries.**



Table 3

Exports, imports and trade balance by sections of SITC, rev. 4
in 2010 and 2011¹

Sections by SITC	Exports - FOB			Imports - CIF			Trade balance - FOB/CIF	
	2010	2011	Growth - %	2010	2011	Growth - %	2010	2011
	Million Levs			Million Levs			Million Levs	
Total	30435.0	39560.0	30.0	37639.5	45660.9	21.3	-7204.5	-6100.9
of which EU	18520.1	24737.2	33.6	22015.2	27035.2	22.8	-3495.1	-2298.0
Food and live animals	3261.2	3787.1	16.1	2857.4	3446.9	20.6	403.8	340.2
of which EU	2472.7	2924.4	18.3	2310.5	2833.9	22.7	162.2	90.5
Beverages and tobacco	679.1	795.8	17.2	495.3	553.1	11.7	183.8	242.7
of which EU	278.2	323.0	16.1	349.1	399.0	14.3	-70.9	-76.0
Crude materials, inedible (except fuel)	2647.9	3959.1	49.5	3220.0	4485.1	39.3	-572.1	-526.0
of which EU	1553.4	2335.7	50.4	1100.1	2858.7	159.9	453.3	-523.0
Mineral fuel, lubricants and related materials	4111.5	5421.2	31.9	8487.3	10519.5	23.9	-4375.8	-5098.3
of which EU	995.5	1250.1	25.6	1306.2	1289.0	-1.3	-310.7	-38.9
Animals and vegetable oils, fats and waxes	203.0	294.3	45.0	171.0	211.8	23.9	32.0	82.5
of which EU	152.5	225.5	47.9	126.0	168.9	34.0	26.5	56.6
Chemical and related products n.e.c.	2424.1	3122.1	28.8	4407.6	5190.0	17.8	-1983.5	-2067.9
of which EU	971.9	1460.9	50.3	3541.4	4038.4	14.0	-2569.5	-2577.5
Manufactured goods classified chiefly by material	7062.4	9850.5	39.5	6356.0	7720.6	21.5	706.4	2129.9
of which EU	4404.9	6596.4	49.8	4175.4	4885.7	17.0	229.5	1710.7
Machinery and transport equipment	5094.5	6683.7	31.2	8750.4	10470.1	19.7	-3655.9	-3786.4
of which EU	3647.5	4917.8	34.8	6891.2	8205.4	19.1	-3243.7	-3287.6
Miscellaneous manufactured articles	4921.6	5595.4	13.7	2776.0	2932.6	5.6	2145.6	2662.8
of which EU	4031.6	4684.0	16.2	2133.7	2260.3	5.9	1897.9	2423.7
Commodities and transactions n.e.c.	29.7	50.8	71.0	118.5	131.2	10.7	-88.8	-80.4
of which EU	11.9	19.4	63.0	81.6	95.9	17.5	-69.7	-76.5

¹ Data are preliminary as of 12.03.2012.