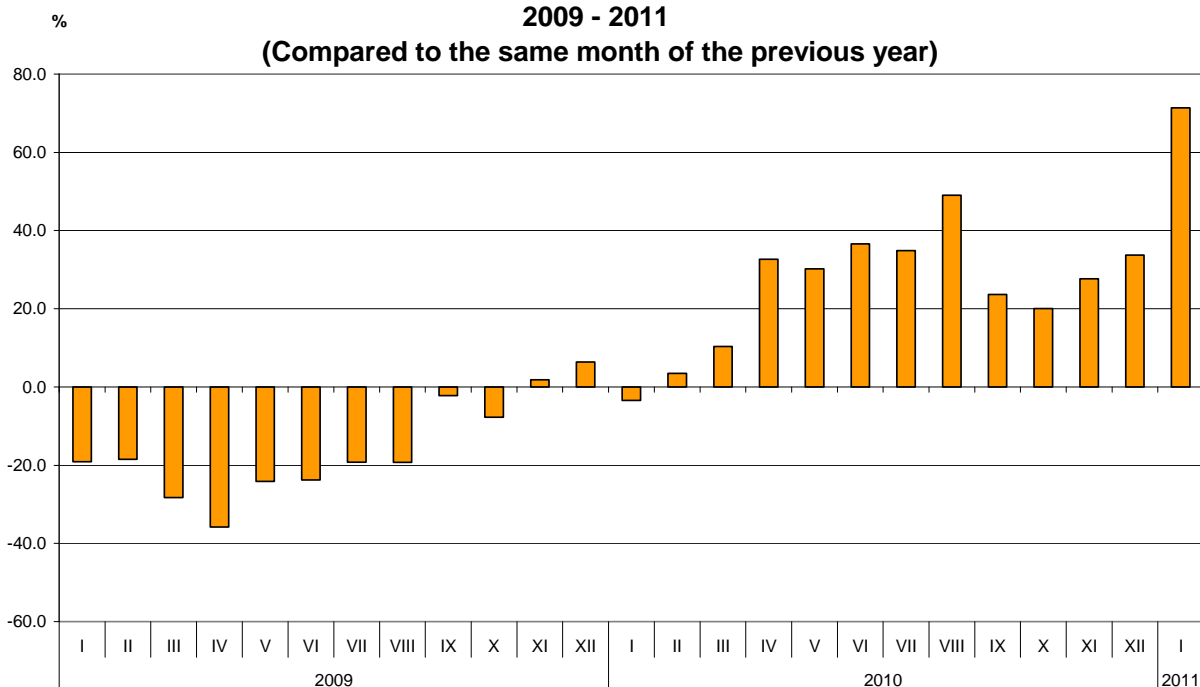




**BULGARIAN TRADE WITH EU IN JANUARY 2011  
(PRELIMINARY DATA)**

In **January 2011** the Bulgarian **exports** to the **EU** increased by 71.4% compared to the corresponding month of the previous year and amounted to 1.8 billion leva (Table 1.1 and 1.2). The main trade partners of Bulgaria were Germany, Italy, Greece, Romania and France that formed 68.0% of the total exports to the EU Member states (Table.2). The most significant growths were observed in the exports to Portugal, Luxembourg and Estonia. The most notable falls were registered in the exports to Latvia and Slovakia.

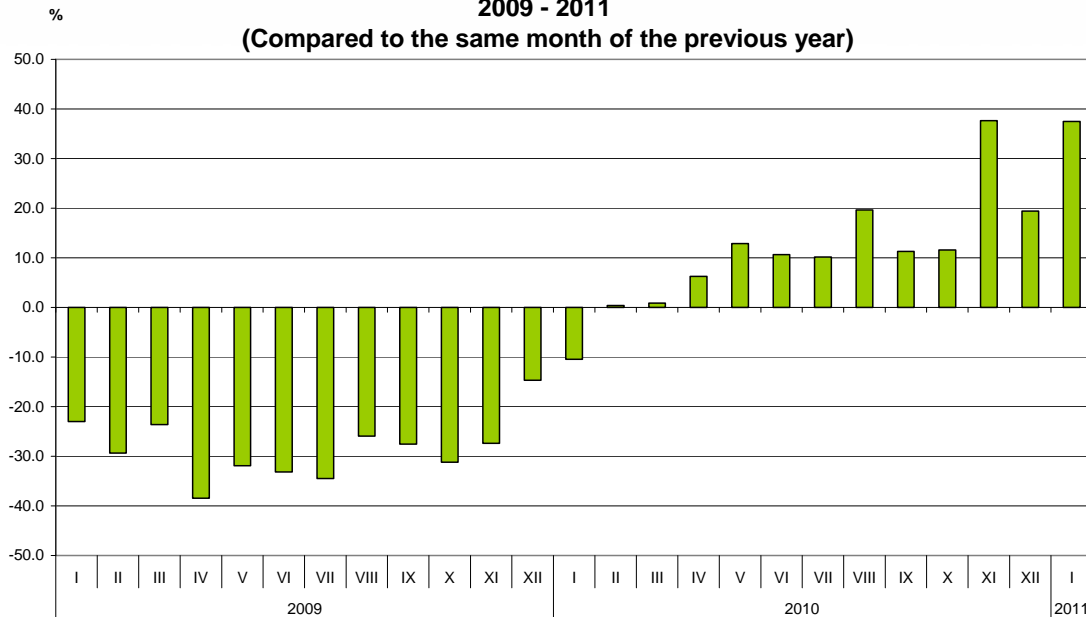
**Figure 1. Nominal growth of exports to EU for the period  
2009 - 2011  
(Compared to the same month of the previous year)**



Bulgarian **imports from the EU** in January 2011 increased by 37.5% compared to the corresponding month of the previous year and amounted to 1.7 billion leva at CIF prices (Tables 1.1 and 1.2). The most significant growths were reported on the imports from Portugal, Slovakia and Ireland (Table 2). The largest decreases were observed in the imports from Czech Republic, Lithuania and Cyprus.



Figure 2. Nominal growth of imports from EU for the period  
2009 - 2011  
(Compared to the same month of the previous year)



The **foreign trade balance** of Bulgaria (export FOB - import CIF) with **EU** in January 2011 was positive and amounted to 89.6 million leva (Table 1.1) On FOB/FOB prices (after elimination of transport and insurance costs on imports) the trade balance was also positive and amounted 177.0 million leva.

The **exports** of Bulgaria to the **EU** distributed according to the **Standard International Trade Classification**, increased in most of the sections in January 2011 compared to the corresponding month of the previous year (Table 3). The largest growths were recorded in the sections “Crude materials, inedible (except fuel)”<sup>1</sup> and “Mineral fuels, lubricant and related materials”. A fall was observed only in exports of one section – „Beverages and tobacco”.

The largest growths on **imports** from the **EU** were reported in sections “Crude materials, inedible (except fuel)” and „Beverages and tobacco” and the lowest in section “Miscellaneous manufactured articles”<sup>2</sup>

<sup>1</sup> The section includes the following divisions: raw hides, skins and furskins; oil-seeds and oleaginous fruits; crude rubber; cork and wood; pulp and waste paper; textile fibres and their wastes; crude fertilizers and crude minerals; metalliferous ores and metal scrap; crude animal and vegetable materials, n.e.s.

<sup>2</sup> The section includes the following divisions: Prefabricated buildings; sanitary, plumbing, heating and lightning fixtures and fittings, Furniture and parts thereof; bedding, mattresses, mattress supports, cushions and similar stuffed furnishings, Travel goods, handbags and similar containers, Articles of apparel and clothing accessories, Footwear, Professional, scientific and controlling instruments and apparatus, Photographic apparatus, equipment and supplies and optical goods, n.e.s.; watches and clocks, Miscellaneous manufactured articles, n.e.s.

## ANNEX

Exports, imports and trade balance in January 2010<sup>1</sup> and 2011<sup>1</sup> by months

Table 1.1  
(Million  
Levs)

Months	Exports - FOB			Imports - CIF			Imports - FOB <sup>2</sup>			Trade balance - FOB/CIF			Trade balance - FOB/FOB <sup>2</sup>		
	Total	EU	Non EU	Total	EU	Non EU	Total	EU	Non EU	Total	EU	Non EU	Total	EU	Non EU
I.2010	1802,0	1075,2	726,8	2267,4	1275,0	992,4	2133,2	1208,9	924,3	-465,4	-199,8	-265,6	-331,2	-133,7	-197,5
I.2011	3108,4	1842,7	1265,7	3113,0	1753,1	1359,9	2922,3	1665,7	1256,6	-4,6	89,6	-94,2	186,1	177,0	9,1

<sup>1</sup> Data are preliminary as of 11.04.2011.

<sup>2</sup> By data of BNB for the transport costs.

Table 1.2

Growth of exports and imports in January 2011<sup>1</sup> compared to the same month of the previous year

(Per cent)

Months	Exports - FOB			Imports - CIF			Imports - FOB		
	Total	EU	Non EU	Total	EU	Non EU	Total	EU	Non EU
I	72,5	71,4	74,1	37,3	37,5	37,0	37,0	37,8	36,0

<sup>1</sup> Data are preliminary as of 11.04.2011.


**Table2**
**Exports, imports and trade balance by groups of countries and main trade partners<sup>1</sup>**  
**in January 2010<sup>2</sup> and 2011<sup>2</sup>**

Countries and groups of countries	Exports - FOB			Imports - CIF			Trade balance - FOB/CIF	
	2010	2011	Growth - %	2010	2011	Growth - %	2010	2011
	Million Levs			Million Levs			Million Levs	
<b>Total</b>	<b>1802,0</b>	<b>3108,4</b>	<b>72,5</b>	<b>2267,4</b>	<b>3113,0</b>	<b>37,3</b>	<b>-465,4</b>	<b>-4,6</b>
<b>EU</b>	<b>1075,2</b>	<b>1842,7</b>	<b>71,4</b>	<b>1275,0</b>	<b>1753,1</b>	<b>37,5</b>	<b>-199,8</b>	<b>89,6</b>
Austria	35,8	55,7	55,6	79,8	118,8	48,9	-44,0	-63,1
Belgium	50,8	140,7	177,0	40,1	47,2	17,7	10,7	93,5
Cyprus	5,9	9,9	67,8	3,3	2,7	-18,2	2,6	7,2
Czech Republic	14,4	31,0	115,3	74,5	51,6	-30,7	-60,1	-20,6
Denmark	7,8	15,7	101,3	17,4	15,1	-13,2	-9,6	0,6
Estonia	0,7	2,1	200,0	0,6	0,5	-16,7	0,1	1,6
Finland	2,4	5,5	129,2	9,1	9,8	7,7	-6,7	-4,3
France	84,9	115,6	36,2	79,7	105,2	32,0	5,2	10,4
Germany	196,3	437,1	122,7	267,5	322,8	20,7	-71,2	114,3
Greece	140,6	223,4	58,9	105,1	186,7	77,6	35,5	36,7
Hungary	25,7	42,8	66,5	85,0	95,7	12,6	-59,3	-52,9
Ireland	1,1	1,3	18,2	5,6	12,6	125,0	-4,5	-11,3
Italy	214,9	255,4	18,8	135,0	201,3	49,1	79,9	54,1
Latvia	1,7	1,6	-5,9	0,8	1,1	37,5	0,9	0,5
Lithuania	2,3	2,6	13,0	4,4	3,4	-22,7	-2,1	-0,8
Luxembourg	0,7	3,2	357,1	1,1	1,6	45,5	-0,4	1,6
Malta	0,8	1,4	75,0	1,5	1,3	-13,3	-0,7	0,1
Netherlands	41,7	66,6	59,7	70,9	79,9	12,7	-29,2	-13,3
Poland	32,0	49,4	54,4	40,5	56,1	38,5	-8,5	-6,7
Portugal	3,1	20,4	558,1	1,8	16,0	788,9	1,3	4,4
Romania	104,9	222,3	111,9	143,6	237,8	65,6	-38,7	-15,5
Slovakia	13,8	13,0	-5,8	25,1	57,4	128,7	-11,3	-44,4
Slovenia	7,3	8,0	9,6	17,9	23,6	31,8	-10,6	-15,6
Spain	42,6	51,6	21,1	25,9	41,8	61,4	16,7	9,8
Sweden	9,8	15,3	56,1	9,4	17,9	90,4	0,4	-2,6
United Kingdom	32,3	50,7	57,0	28,2	44,7	58,5	4,1	6,0
Not specified	0,9	0,4	-55,6	1,2	0,5	-58,3	-0,3	-0,1
<b>Non EU countries</b>	<b>726,8</b>	<b>1265,7</b>	<b>74,1</b>	<b>992,4</b>	<b>1359,9</b>	<b>37,0</b>	<b>-265,6</b>	<b>-94,2</b>
<b>CIS</b>	<b>71,4</b>	<b>128,9</b>	<b>80,5</b>	<b>527,4</b>	<b>850,5</b>	<b>61,3</b>	<b>-456,0</b>	<b>-721,6</b>
of which:								
Georgia	12,5	22,4	79,2	13,3	35,0	163,2	-0,8	-12,6
Kazakhstan	0,6	3,4	466,7	0,1	3,1	3000,0	0,5	0,3
Russian Fed.	35,7	72,7	103,6	437,8	613,3	40,1	-402,1	-540,6
Ukraine	12,4	17,4	40,3	71,8	189,0	163,2	-59,4	-171,6
<b>OECD<sup>3</sup></b>	<b>209,4</b>	<b>421,5</b>	<b>101,3</b>	<b>190,8</b>	<b>211,9</b>	<b>11,1</b>	<b>18,6</b>	<b>209,6</b>
of which:								
Canada	2,6	4,3	65,4	1,9	2,3	21,1	0,7	2,0
Japan	2,7	2,1	-22,2	6,3	12,5	98,4	-3,6	-10,4
Korea, Rep. of	8,3	3,1	-62,7	6,5	13,9	113,8	1,8	-10,8
Turkey	151,9	342,7	125,6	133,1	133,6	0,4	18,8	209,1
USA	26,2	36,1	37,8	16,4	18,1	10,4	9,8	18,0
<b>EFTA</b>	<b>15,4</b>	<b>26,2</b>	<b>70,1</b>	<b>24,3</b>	<b>30,3</b>	<b>24,7</b>	<b>-8,9</b>	<b>-4,1</b>



www.nsi.bg								
of which:								
Norway	3,5	5,0	42,9	1,3	1,1	-15,4	2,2	3,9
Switzerland	11,5	20,0	73,9	22,5	29,2	29,8	-11,0	-9,2
<b>Countries not included in the upper groups</b>								
Albania	8,2	9,4	14,6	1,4	2,7	92,9	6,8	6,7
Bosnia and Herzegovina	2,4	6,4	166,7	0,2	1,1	450,0	2,2	5,3
Brazil	1,5	0,6	-60,0	7,1	8,4	18,3	-5,6	-7,8
China	17,3	98,7	470,5	62,8	92,3	47,0	-45,5	6,4
Croatia	8,6	20,8	141,9	3,7	3,3	-10,8	4,9	17,5
Egypt	13,1	12,4	-5,3	2,2	12,0	445,5	10,9	0,4
India	3,1	3,6	16,1	4,4	7,8	77,3	-1,3	-4,2
Indonesia	1,7	3,3	94,1	2,1	3,1	47,6	-0,4	0,2
Iran	10,9	2,3	-78,9	0,3	1,4	366,7	10,6	0,9
Israel	4,2	6,3	50,0	7,6	19,3	153,9	-3,4	-13,0
Peru	5,5	0,2	-96,4	48,8	3,8	-92,2	-43,3	-3,6
Serbia	66,0	72,6	10,0	21,0	32,7	55,7	45,0	39,9
Singapore	41,1	61,7	50,1	1,0	4,4	340,0	40,1	57,3
South Africa	1,2	36,5	2941,7	0,4	2,3	475,0	0,8	34,2
Syria	20,5	1,6	-92,2	9,0	4,8	-46,7	11,5	-3,2
Taiwan	2,3	2,8	21,7	7,0	8,9	27,1	-4,7	-6,1
The former Yugoslav Rep. of Macedonia	31,0	65,4	111,0	31,9	34,8	9,1	-0,9	30,6
United Arab Emirates	2,4	3,4	41,7	2,2	13,3	504,5	0,2	-9,9
Viet Nam	1,7	1,2	-29,4	3,8	3,0	-21,1	-2,1	-1,8

<sup>1</sup> **Partner country:**

- In case of exports (or dispatches) is the country (or Member State) of final destination of the goods
- In case of imports (or arrivals) is the country (or Member State) of consignment of the goods.

<sup>2</sup> **Data are preliminary as of 11.04.2011.**

<sup>3</sup> **Excluding EU countries.**

